

Biological, Physiological, Pathophysiological, and Pharmacological Aspects of Ghrelin

AART J. VAN DER LELY, MATTHIAS TSCHÖP, MARK L. HEIMAN, AND EZIO GHIGO

Division of Endocrinology and Metabolism (A.J.v.d.L.), Department of Internal Medicine, Erasmus Medical Center, 3015 GD Rotterdam, The Netherlands; Department of Psychiatry (M.T.), University of Cincinnati, Cincinnati, Ohio 45237; Endocrine Research Department (M.L.H.), Eli Lilly and Co., Indianapolis, Indiana 46285; and Division of Endocrinology (E.G.), Department of Internal Medicine, University of Turin, Turin, Italy 10095

Ghrelin is a peptide predominantly produced by the stomach. Ghrelin displays strong GH-releasing activity. This activity is mediated by the activation of the so-called GH secretagogue receptor type 1a. This receptor had been shown to be specific for a family of synthetic, peptidyl and nonpeptidyl GH secretagogues. Apart from a potent GH-releasing action, ghrelin has other activities including stimulation of lactotroph and corticotroph function, influence on the pituitary gonadal axis, stimulation of appetite, control of energy balance, influence on sleep and behavior, control of gastric motility and acid

secretion, and influence on pancreatic exocrine and endocrine function as well as on glucose metabolism. Cardiovascular actions and modulation of proliferation of neoplastic cells, as well as of the immune system, are other actions of ghrelin. Therefore, we consider ghrelin a gastrointestinal peptide contributing to the regulation of diverse functions of the gut-brain axis. So, there is indeed a possibility that ghrelin analogs, acting as either agonists or antagonists, might have clinical impact. (Endocrine Reviews 25: 426–457, 2004)

- I. Introduction
- II. Historical Background
- III. The Biology of a Ubiquitously Expressed Hormone and Its Receptor Family
 - A. Known and unknown GH secretagogue receptors
 - B. Known and unknown ligands of the GH secretagogue receptors
- IV. Control of Ghrelin Secretion: Indications for Its Importance in Biology
- V. Physiological and Pathophysiological Actions of Ghrelin
 - A. Hypothalamic-pituitary actions
 - B. Central actions of ghrelin and GHS
 - C. Peripheral activities of synthetic and natural GHS
- VI. Ghrelin as an Important Member of the Survival Kit of Nature
- VII. Pharmacological and Clinical Perspectives

I. Introduction

GHRELIN IS A 28-amino residue peptide predominantly produced by the stomach (Fig. 1). Substantially lower amounts were detected in bowel, pancreas, kidneys, the immune system, placenta, testes, pituitary, lung, and hypothalamus (1–12). Ghrelin displays strong GH-releasing activity, which is mediated by the activation of the so-called GH

Abbreviations: AGRP, Agouti-related protein; CNS, central nervous system; CST, cortistatin; GABA, γ -aminobutyric acid; GHD, GH deficiency or GH-deficient; GHRP, GH-releasing peptide; GHS, GH secretagogue(s); GHS-R 1a, GHS receptor type 1a; GLP, glucagon-like peptide; HDL, high-density lipoprotein; NPY, neuropeptide Y; POMC, proopiomelanocortin; PRL, prolactin; PWS, Prader-Willi syndrome; SS, somatostatin.

Endocrine Reviews is published bimonthly by The Endocrine Society (<http://www.endo-society.org>), the foremost professional society serving the endocrine community.

secretagogue (GHS) receptor type 1a (GHS-R 1a) (13). Before the discovery of ghrelin, this orphan receptor had been shown to be specific for a family of synthetic, peptidyl and nonpeptidyl GHS (1, 14–23). GHS-Rs are concentrated in the hypothalamus-pituitary unit but are also distributed in other central and peripheral tissues (8, 13, 14, 20, 22–30). Indeed, apart from stimulating GH secretion, ghrelin and many synthetic GHS (Fig. 2): 1) exhibit hypothalamic activities that result in stimulation of prolactin (PRL) and ACTH secretion; 2) negatively influence the pituitary-gonadal axis at both the central and peripheral level; 3) stimulate appetite and a positive energy balance; 4) influence sleep and behavior; 5) control gastric motility and acid secretion; and 6) modulate pancreatic exocrine and endocrine function and affect glucose levels.

Cardiovascular actions and modulation of the proliferation of neoplastic cells, as well as of the immune system, are also actions of ghrelin and/or other GHS (2, 8, 9, 14, 16, 20, 25, 27, 31–58). Given this wide spectrum of biological activities, it is evident that the discovery of ghrelin opened many new perspectives within neuroendocrine and metabolic research and even has an influence on fields of internal medicine such as gastroenterology, immunology, oncology, and cardiology. It is therefore increasingly likely that ghrelin and its GHS analogs, acting as either agonists or antagonists on different physiological and pathophysiological processes, might have clinical impact and therapeutic potential.

II. Historical Background

The gastric hormone ghrelin was identified as an endogenous ligand for the former orphan receptor GHS-R 1a (1, 13, 14); the discovery of this receptor followed by 20 yr that of synthetic GHS, which specifically binds it (1, 14, 17, 19–21,

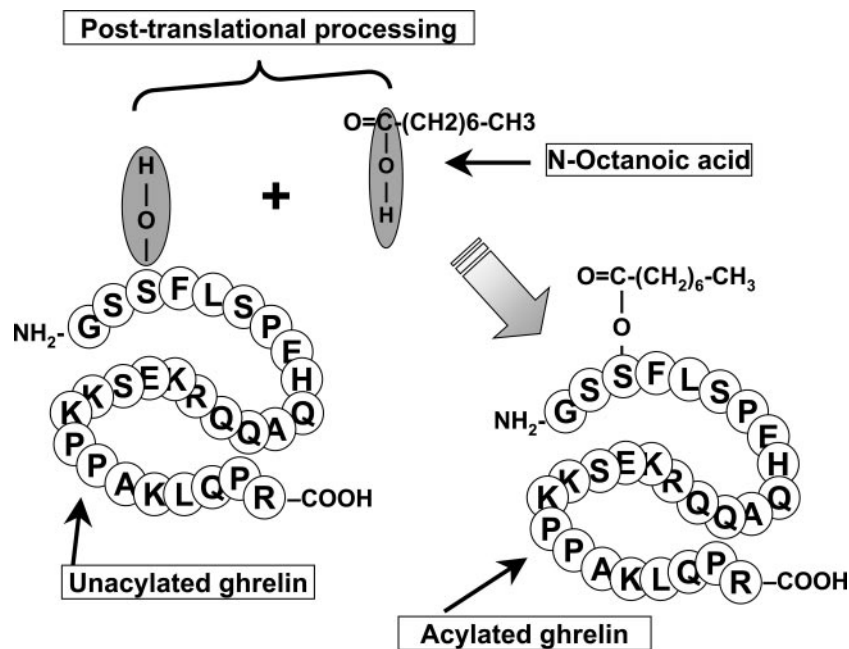


FIG. 1. Ghrelin is the only known natural peptide in mammalian biology in which acylation of one amino residue is required for at least the majority of its biological activities. Under the influence of a still unknown acyl-transferase, a hydroxyl group of serine at position 3 of the ghrelin molecule is octanoylated. This posttranslational modification of ghrelin is essential for binding and activation of the GHS-R 1a, for the GH-releasing capacity of ghrelin, and most likely also for its action on endocrine axis, energy balance, and glucose homeostasis. Several naturally occurring variants of ghrelin have been reported based on the acylation at the serine-3 position, including nonacylated, octanoylated (C8:0), decanoylated (C10:0), and possibly decenoylated (C10:1) ghrelin. Any other synthetic variant of ghrelin with a chemical modification of either the acyl group or the N-terminal amino residue sequence did not activate or bind the receptor GHS-R 1a. However, ghrelin did still bind and activate the GHS-R 1a *in vitro* after modification or even significant deletion of C-terminal amino residues. It however remains unclear whether the same modalities are relevant *in vivo*. Although the major active form of human ghrelin is a 28-amino acid peptide with an octanoylation at the serine-3 position, the vast majority (~80–90%) of circulating ghrelin has been found to be nonacylated. This predominant form of serum ghrelin seems to be devoid of any effects on endocrine axes or energy balance, as previously expected based on its inability to bind and activate GHS-R 1a, which is still the only identified ghrelin receptor. However, nonacylated ghrelin does have cardiovascular and antiproliferative effects, and it seems tempting to speculate that these activities are mediated by yet to be identified receptor families or subtypes (1). In the absence of further information on the tissue specificity, reversibility, balance, and enzyme kinetics of the (des-) octanoylation process, the information one can possibly gain from plasma ghrelin quantification is very limited but should include the analysis of both total and acylated ghrelin (17, 131–133).

28, 59–72). This makes the discovery of ghrelin an example of reverse pharmacology, which in this case means that it started with the synthesis of analogs and it ended with the discovery of a natural ligand via the discovery of a natural receptor.

Synthetic GHS are a family of ligands, including peptidyl and nonpeptidyl molecules (Table 1) (8, 14, 20, 68, 69, 73–82). The first synthesized molecules were nonnatural peptides [GH-releasing peptides GHRPs] that were designed by Bowers and Momany (59, 60, 68, 73) in the late 1970s. They were metenkephalin derivatives devoid of any opioid activity (Table 2).

GHRP-6 (His-D-Trp-Ala-Trp-D-Phe-Lys-NH₂) was the first hexapeptide to actively release GH *in vivo*, in humans even more than in animals. One of its most remarkable properties was that GHRP-6 showed strong GH-releasing activity even after oral administration, although with low bioavailability and short-lasting effects (14, 68, 73, 74, 83). Further research that aimed to select orally active molecules with better bioavailability and longer half-lives led to the synthesis of other GHRPs as well as the discovery of orally active nonpeptidyl molecules. The most representative of these nonpeptidyl GHS that was studied in humans was the spi-

roindoline L-163,191 (MK-0677) (14, 84–105). MK-0677 has been shown to possess a high bioavailability and is able to enhance 24-h GH secretion after a single oral administration (14, 84–105). All these data explain why MK-0677 became the most likely candidate compound for drug treatment of GH deficiency (GHD) in childhood. Also, it was suggested that, as an orally active anabolic drug, it might play a therapeutic role for antiaging purposes in frail elderly subjects (14, 85, 86, 88–90, 92, 96, 97, 99, 102–105).

Very recently, another new peptidomimetic GHS with potent and selective GH-releasing activity was synthesized and called EP1572 UMV1843 [Aib-D-Trp-DgTrp-CHO]. EP1572 shows binding potency to the GHS-R in animal and human tissues similar to that of ghrelin and peptidyl GHS and induces marked GH increase after sc administration in neonatal rats. Preliminary human data show that acute iv EP1572 administration (1.0 μg/kg) induces strong and selective increases in GH levels. Moreover, a single oral EP1572 administration strongly and reproducibly increases GH levels even after a dose as low as 0.06 mg/kg (106).

MK-0677 resulted in the discovery and cloning of the GHS-R. The existence of this GHS-R, as shown by mRNA expression, had been indicated already by binding studies

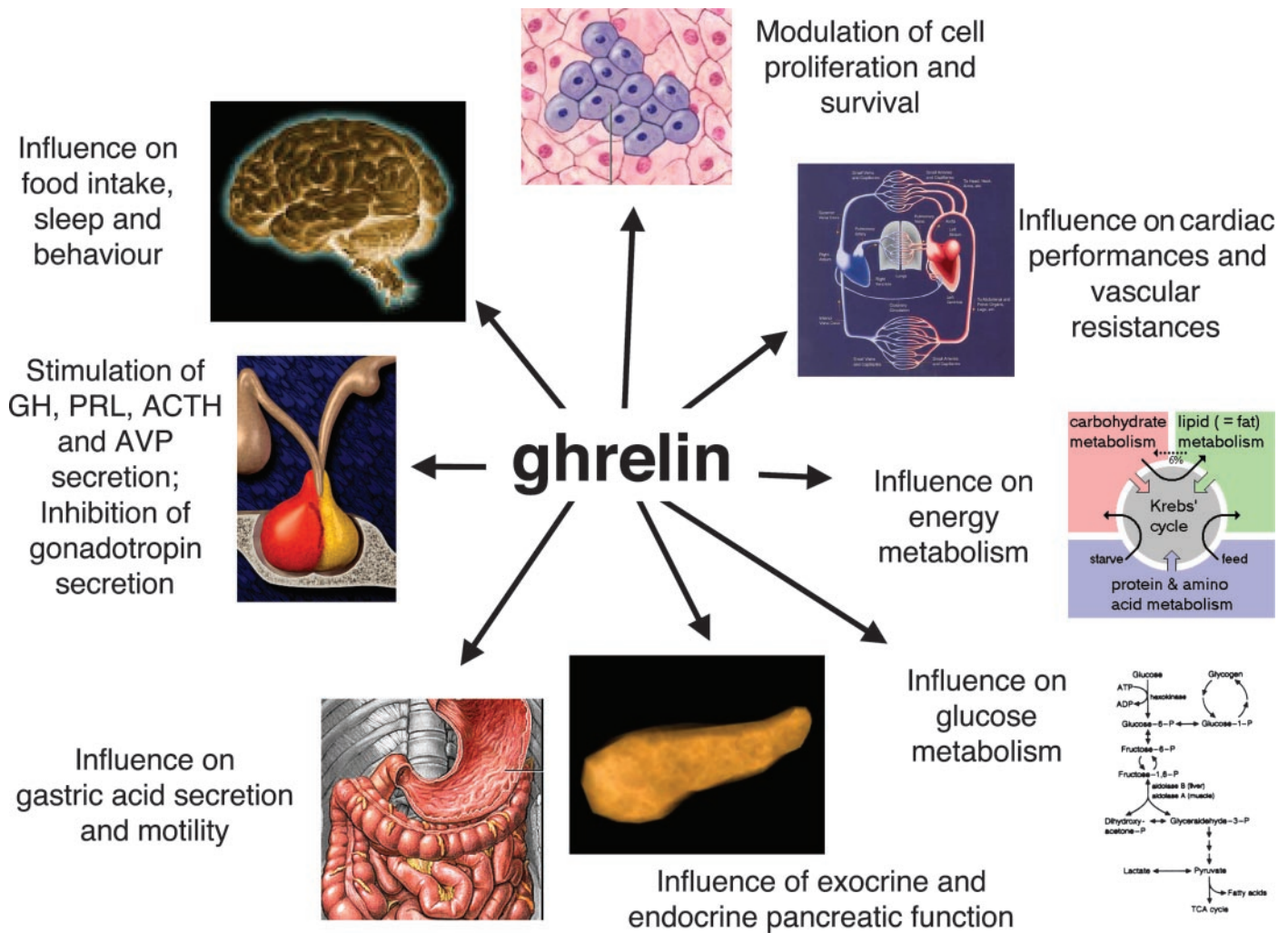


FIG. 2. Known biological activities of ghrelin. Some of the effects of ghrelin shown here are believed to be indirectly mediated via pituitary hormones or hypothalamic neurocircuits and their efferent pathways; others, such as the effect on the cardiovascular system, appear to be direct. Depending on the origin of the hormone, which is mainly derived from the stomach but also expressed in the pancreas, the hypothalamus, the pituitary, the duodenum, and other organs, these effects may have endocrine, paracrine, or autocrine character. AVP, Arginine vasopressin.

TABLE 1. Primary structure of ghrelin from domesticated species aligned to human ghrelin

1	2	3	4	5	6	7	8	9	10	11	12	13	14	15	16	17	18	19	20	21	22	23	24	25	26	27	28	Species
G	S	S	F	L	S	P	E	H	Q	R	V	Q	Q	R	K	E	S	K	K	P	P	A	K	L	Q	P	R	Human
G	S	S	F	L	S	P	E	H	Q	K	T	Q	Q	R	K	E	S	K	K	P	P	A	K	L	Q	P	R	Gerbil
G	S	S	F	L	S	P	E	H	Q	K	A	Q	Q	R	K	E	S	K	K	P	P	A	K	L	Q	P	R	Mouse
G	S	S	F	L	S	P	E	H	Q	K	A	Q	Q	R	K	E	S	K	K	P	P	A	K	L	Q	P	R	Rat
G	S	S	F	L	S	P	E	H	Q	K	L	Q	Q	R	K	E	S	K	K	P	P	A	K	L	Q	P	R	Dog
G	S	S	F	L	S	P	E	H	Q	K	V	Q	Q	R	K	E	S	K	K	P	A	A	K	L	K	P	R	Pig
G	S	S	F	L	S	P	E	H	Q	K	L	□	Q	R	K	E	A	K	K	P	S	G	R	L	K	P	R	Cattle
G	S	S	F	L	S	P	E	H	Q	K	L	□	Q	R	K	E	P	K	K	P	S	G	R	L	K	P	R	Sheep
G	S	S	F	L	S	P	T	Y	K	N	I	Q	Q	Q	K	D	T	R	K	P	T	A	R	L	H	R	R	Chicken
G	S	S	F	L	S	P	S	□	Q	R	□	P	Q	G	K	D	□	K	K	P	P	□	R	V	G	R	R	Eel
G	S	S	F	L	S	P	S	□	□	□	□	□	Q	K	P	Q	N	K	V	K	S	S	R	I	G	R	Q	Tilapia

Bold and italic indicates that residue is different from that in human; □ indicates space added for alignment to the human ghrelin primary structure.

(14, 24, 26, 29, 30, 47, 73, 107–119). Studies focusing on the distribution of the identified GHS-Rs showed a particular concentration of these receptors in the hypothalamus-pituitary area. However, GHS-R expression and/or the presence of specific binding sites has been found in other brain areas

and peripheral, endocrine, and nonendocrine animal and human tissues (1–9, 22, 24–26, 30, 120, 121). Actually, both the concentration of binding sites and the displacement of peptide-radioligand by ghrelin suggest that the majority of binding in peripheral tissues is not specific for ghrelin or MK-

TABLE 2. Studies of peptidyl and nonpeptidyl GHS

Year	Peptidyl GHS (GHRPs)	Refs.	Nonpeptidyl GHS	Refs.
1977	(D-Trp ²)-metenkephalin	59, 60, 68, 73		
1984	GHRP-6	14, 68, 73, 74, 83		
1991	GHRP-1	270, 305		
1992			L-692,429	103–105, 256, 257, 261, 468, 469
1993	GHRP-2	263, 470–474		
1994	Hexarelin	303, 475–478	L-692,585	272, 285, 479
1995			MK-0677	14, 84–105
1996	EP-51389	167, 480, 481		
1998	Ipamorelin	76, 482		
1999			NN-703	483–485
2000			CP-424,391	75
2001			SM-130686	486
2002			EP-01572	106

0677. The studies using labeled GHRPs overestimate the concentration of specific ghrelin binding because they exhibit high capacity and low affinity binding in addition to limited capacity ghrelin-specific binding. Anyway, hypothalamopituitary and peripheral distribution of GHS-Rs probably explains both the GH-releasing effect of GHS and their other endocrine and nonendocrine biological activities (2, 8, 9, 14, 16, 20, 25, 27, 31–56, 122).

As discovered by Kojima *et al.* (1) in 1999, ghrelin appeared to be a 28-residue peptide that is predominantly produced by the stomach but is also expressed in many other tissues (1–9, 12, 123). Ghrelin is produced in the stomach by the enteroendocrine X/A-like cells that represent a major endocrine population in the oxyntic mucosa. The hormonal product of these cells had not been previously clarified (1, 3, 124–127). Ghrelin production has also been reported in neoplastic tissues as gastric and intestinal carcinoids (126, 128) and in medullary thyroid carcinomas (129).

Ghrelin is the first natural hormone to be identified in which the hydroxyl group of one of its serine residues is acylated by n-octanoic acid (1). This acylation is essential for binding to the GHS-R 1a, for the GH-releasing capacity of ghrelin, and most likely for its other endocrine actions also (1, 17, 21, 130) (Fig. 1). Nonacylated ghrelin, which is present in human serum in far greater quantities than acylated ghrelin, seems to be devoid of any endocrine action. However, it is able to exert some nonendocrine actions including cardiovascular and antiproliferative effects, probably by binding different GHS-R subtypes or receptor families (3, 27).

There is another endogenous ligand for the GHS-R 1a that can be isolated from the endocrine mucosa of the stomach. Des-Gln14-ghrelin has undergone the same process of acylation at its Ser3 residue and is homologous to ghrelin except that it lacks one glutamine. Des-Gln14-ghrelin is the result of alternative splicing of the ghrelin gene, and it seems to possess the same hormonal activities as ghrelin (1, 131). Studies with several analogs of ghrelin with various aliphatic or aromatic groups in the side chain of residue 3 and several short peptides derived from ghrelin as well showed that bulky hydrophobic groups in the side chain of residue 3 are essential for maximum agonist activity. In addition, short peptides encompassing the first four or five residues of ghrelin were found to functionally activate GHS-R 1a about as efficiently as the full-length ghrelin. Thus, the entire sequence of ghrelin is not necessary for activity; the Gly-Ser-

Ser(n-octanoyl)-Phe segment appears to constitute the active core required for agonist potency at GHS-R 1a (17, 132). Hosoda *et al.* (133) isolated, in the course of purification of ghrelin from the stomach, human ghrelin of the expected size, as well as several other ghrelin-derived molecules that could be classified into four groups by the type of acylation observed at the serine-3 position. These peptides were found to be nonacylated, octanoylated (C8:0), decanoylated (C10:0), and possibly decenoylated (C10:1). The major active form of human ghrelin is a 28-amino acid peptide octanoylated at the serine-3 position, as was found for rat ghrelin. Both ghrelin and the ghrelin-derived molecules were found to be present in plasma as well as stomach tissue. Del Rincon *et al.* (134) pointed out that identification and characterization of the novel gastric peptide hormone, named motilin-related peptide by Tomasetto *et al.* (127, 135), were strictly connected to ghrelin. Motilin-related peptide shows the same amino acid sequence as ghrelin, reflecting that the same gene encoding for this peptide was discovered by two different groups and was given two different names.

That the scientific work on the GHS also led to the discovery of the motilin receptor is not by chance; the motilin receptor is a member of the GHS-R family having a 52% identity (112, 117, 118, 127, 134–139). This former orphan G protein-coupled receptor was isolated based on its high homology with the GHS-R, and through ligand screening assays motilin was identified as its endogenous ligand. However, unlike ghrelin, acylation of motilin is not needed for activation of its receptor (112). Prepromotilin, which is also produced by the enteroendocrine cells of the stomach, is almost identical with human preproghrelin, except for the serine-26 residue that is not octanoylated in the prepromotilin-related peptide; however, human ghrelin and motilin show only 36% homology (1, 112, 117, 127, 134–140). Motilin and motilin receptors have been well characterized in humans and dogs, whereas rodents do not have a motilin receptor. The ability of motilin to exert some stimulatory effect on GH secretion and some orexigenic effect after central administration cannot be mediated by the GHS-R 1a, because motilin does not activate GHS-R 1a (112, 137, 140, 141). On the other hand, ghrelin does not activate motilin receptors (142). Therefore, we consider both ghrelin and motilin as representatives of a novel family of gastrointestinal peptides contributing to the regulation of diverse functions of the gut-brain axis. This in itself is a remarkable turn of a story

that started as a field of research focused on GH secretion alone.

III. The Biology of a Ubiquitously Expressed Hormone and Its Receptor Family

A. Known and unknown GH secretagogue receptors

In addition to the physiological stimulation by hypothalamic GHRH, the release of GH from the pituitary is stimulated by small synthetic peptidyl and nonpeptidyl molecules called “GH secretagogues” (for reviews, see Refs. 48 and 74). They act through a specific G protein-coupled receptor (13), the GHS-R, for which the ligand was unknown until a Japanese group of scientists led by M. Kojima (1) isolated an endogenous ligand specific for the GHS-R, ghrelin, from the stomach. The discovery of this novel gastric hormone, ghrelin, which consists of 28 residues containing an n-octanoyl modification at serine 3, has been recently reviewed by Bowers (70), Kojima *et al.* (143), Inui (52), and Muccioli *et al.* (8).

The GHS-R is expressed by a single gene found at human chromosomal location 3q26.2 (113, 114). Two types of GHS-R cDNAs, which are presumably the result of alternate processing of a pre-mRNA, have been identified and designated receptors 1a and 1b (13, 14, 114) (for reviews, see Refs. 112, 144, 145; also see Ref. 146). Their sequences do not show significant homology with other known receptors; the closest receptor relatives are the neurotensin with 34.9% identity and motilin 1a with 51.6% identity (113). cDNA 1a encodes a receptor, named GHS-R 1a, of 366 amino acids with seven-transmembrane regions and a molecular mass of approximately 41 kDa. The 1b cDNA encodes a shorter form, named the GHS-R 1b, which consists of 289 amino acids with only five-transmembrane regions (13). GHS-R 1b is derived by readthrough of the intron, which produces an in-frame stop codon so that the potential translation product has an identical N terminus with transmembrane domains 1–5 but lacks transmembranes 6 and 7. Although this process does not seem to end in the transcription of a protein, GHS-R 1b expression, however, is widespread in many endocrine and nonendocrine tissues, but its significance remains to be determined (13, 22, 112).

The human GHS-R 1a shares 96 and 93% identity with the rat and pig GHS-R 1a, respectively, and the existence of this receptor can apparently be extended to pre-Cambrian times because amino acid sequences strongly related to human GHS-R 1a have been identified in teleost fish (117). These observations strongly suggest that the GHS-R 1a is highly conserved across the species and probably does have an essential biological function.

The binding of ghrelin and synthetic GHS (such as the peptidyl GHRP-6 and the nonpeptidyl derivative MK-0677) to the GHS-R 1a activates the phospholipase C signaling pathway, leading to increased inositol phosphate turnover and protein kinase C activation, followed by the release of Ca^{2+} from intracellular stores (14, 147). GHS-R activation also leads to an inhibition of K^+ channels, allowing the entry of Ca^{2+} through voltage-gated L-type, but not T-type channels (148, 149). Unlike the GHS-R 1a, the GHS-R 1b failed to

bind GHS and to respond to GHS (13), and its functional role remains to be defined. Synthetic GHS and ghrelin, as well as des-Gln14-ghrelin, a natural isoform that has the same GH-releasing activity as ghrelin (131), bind with high affinity to the GHS-R 1a; their efficacy in displacing [^{35}S]MK-0677 or [^{125}I][Tyr 4]ghrelin binding to pituitary membranes correlates well with concentrations required to stimulate GH release (14, 21, 150). The n-octanoyl group at serine 3 of the ghrelin molecule seems to be essential for the binding and bioactivity of the hormone, at least in terms of GH release. In fact, the nonacylated ghrelin, which circulates in amounts far greater than the acylated form (131), does not displace radiolabeled ghrelin from its hypothalamic or pituitary binding sites (21) and has no GH-releasing or other endocrine activities in rat (1, 70). In man also, the administration of nonacylated ghrelin does not induce any change in the hormonal parameters or in glucose levels, indicating that at least in humans nonacylated ghrelin does not possess endocrine activities of human acylated ghrelin (151).

Interestingly, it has been reported that ghrelin binds a species of high-density lipoprotein (HDL) associated with the plasma esterase, paraoxonase, and clusterin. Both free ghrelin and paraoxon, a substrate for paraoxonase, can inhibit this interaction. Some endogenous ghrelin is found to copurify with HDL during density gradient centrifugation. This interaction links the orexigenic peptide hormone ghrelin to lipid transport and a plasma enzyme that breaks down oxidized lipids in low-density lipoprotein (see Fig. 4). Furthermore, the interaction of the esterified ghrelin with a species containing an esterase suggests a possible mechanism for the conversion of ghrelin to des-acyl ghrelin (152).

Recent studies, dealing with the minimal sequence of ghrelin needed to activate the GHS-R 1a, have shown in HEK-293 cells transfected with the human GHS-R 1a that short octanoylated peptides encompassing the first four to five residues of ghrelin were capable of increasing intracellular Ca^{2+} almost as efficiently as the full-length ghrelin (17, 130). Based on these *in vitro* results, it has been postulated that the active core required for the activation of the receptor is the Gly-Ser-Ser(n-octanoyl)-Phe sequence. Indeed, the amino-terminal 7 residues of ghrelin are conserved between species (Table 1). However, the ability of the above ghrelin derivatives to activate the GHS-R 1a in transfected cells does not seem indicative of their capability to stimulate GH secretion from somatotroph cells. In fact, we have recently demonstrated that octanoylated ghrelin-(1–4) or octanoylated ghrelin-(1–8) is unable to stimulate GH release in rats, and neither of these two truncated molecular forms of ghrelin is effective in displacing [^{125}I][Tyr 4]ghrelin from its binding sites in membrane preparations from human hypothalamus or pituitary gland (153). Possibly, overexpression of the GHS-R 1a or lack of the other receptor populations physiologically present in pituitary cells may be responsible for the reported activity of ghrelin analogs in HEK-293 cells (17, 130). Other study groups working on the same cells expressing human or pig GHS-R 1a have found that adenosine also activates the transfected receptor but, similar to short ghrelin analogs, does not possess a biological counterpart able to stimulate GH secretion and amplify the GHRH effects on normal pituitary cell cultures (154). It has been suggested that

adenosine is a partial agonist of the GHS-R 1a and binds to a receptor site distinct from the binding pocket recognized by MK-0677 and GHRP-6 (155). More recently, we have reported (19) that the GHS-R is also bound by another endogenous molecule such as cortistatin (CST), a neuropeptide homologous to somatostatin (SS), which itself is unable to recognize the GHS-R 1a. This finding supports the hypothesis that natural ligands other than ghrelin or adenosine might modulate the activity of the GHS-R.

Expression of the GHS-R 1a was shown in the hypothalamus and anterior pituitary gland (13, 30, 156, 157), consistent with its role in regulating GH release. The GHS-R 1a is largely confined to somatotroph pituitary cells and to the arcuate nucleus (13, 14, 158), a hypothalamic area that is crucial for the neuroendocrine and appetite-stimulating activities of ghrelin and synthetic GHS (120, 159). This is supported by the demonstration that ghrelin, as well as synthetic GHS, effectively stimulates the expression of some markers of neural activity (*c-fos* and early growth response factor-1) in arcuate nucleus neurons (160, 161). The activated hypothalamic cells include GHRH-containing neurons, but also cells expressing the appetite-stimulating neuropeptide Y (NPY) (71, 158) and the endogenous melanocortin receptor inverse agonist, agouti-related protein (AGRP) (31). Detectable levels of GHS-R 1a mRNA were also demonstrated in various extrahypothalamic areas such as the dentate gyrus of the hippocampal formation, CA2 and CA3 regions of the hippocampus, the pars compacta of the substantia nigra, the ventral tegmental area and dorsal and medial raphe nuclei and Edinger-Westphal nucleus, pons and medulla oblongata (24, 30, 162), possibly indicating its involvement in as yet undefined extrahypothalamic actions. More recent localization studies have demonstrated GHS-R expression in multiple peripheral organs, although the RT-PCR primers were generally not selected to differentiate GHS-R 1a from 1b (1–5, 7–9, 22, 24–26, 30, 120, 121, 163). mRNA was shown in the stomach and intestine (3), pancreas (30), kidney (4), heart and aorta (38, 164, 165), as well as in different human pituitary adenomas (6, 163) and various endocrine neoplasms of lung (166), stomach (126), and pancreas (7, 121, 163). These data are in accord with the reported observations indicating, for ghrelin and synthetic GHS, broader functions beyond the control of GH release and food intake (see *Section V.C*).

Ghrelin and GHS compounds exhibit a high binding affinity to the cloned GHS-R 1a. However, there is evidence, indicating that there are additional binding sites for GHS. Specific binding sites for Tyr-Ala-hexarelin [Tyr-Ala-His-D-2Methyl-Trp-Ala-Trp-D-Phe-Lys-NH₂], other peptidyl GHS (GHRP-2 [D-Ala-D-βNal-Ala-Trp-D-Phe-Lys-NH₂], GHRP-6, and hexarelin [His-D-2Methyl-Trp-Ala-Trp-D-Phe-Lys-NH₂]) with a receptor density that at least equals the density that was found in the pituitary, have been found in rat and human heart (24, 25, 107, 167, 168), as well as in a wide range of other nonendocrine peripheral human tissues such as lung, arteries, skeletal muscle, kidney, and liver (20, 26). These binding sites are presumably not ghrelin receptors, because they show a very low binding affinity for ghrelin (26). As reported by Bodart *et al.* (167), the cardiac GHS-R has a molecular mass larger (84 kDa) than that of GHS-R 1a and shows no homology with this receptor. The

predicted amino acid sequence of the GHS-R expressed in heart muscle is similar to that of CD36, a multifunctional receptor also known as glycoprotein IV (49).

The functional significance of receptors for peptidyl GHS in peripheral nonendocrine tissues is still unknown. Some findings in the cardiovascular system suggest that these binding sites could mediate GH-independent cardioprotective activities exerted by peptidyl GHS, but not by ghrelin (see *Section V.C*).

Recently, we have found ghrelin receptors with a binding profile different from the GHS-R 1a ghrelin receptor in human thyroid and breast tumors, as well as in related cancer cell lines (27, 169). In fact, binding of acylated ghrelin to these receptors is surprisingly inhibited by nonacylated ghrelin, as well as by some synthetic GHS (27, 169); a receptor with the same binding profile has been demonstrated at the cardiovascular level (8, 170). It has to be emphasized that nonacylated ghrelin, although unable to bind to the classical GHS-R 1a and to show any endocrine activity, exerts antiproliferative (27) and cardioprotective effects (171). This is illustrated in the experiment of Fig. 1 that compares the ability of unlabeled ghrelin and nonacylated ghrelin to displace [¹²⁵I][Tyr⁴]ghrelin binding to membranes from cultured pituitary explants, H9C2 cardiomyocytes, and MCF-7 mammary carcinoma cells.

B. Known and unknown ligands of the GH secretagogue receptors

Taking into account the GHS-R 1a as receptor of reference, acylated ghrelin and Des-Gln¹⁴-ghrelin are its natural ligands; in fact, both molecules possess the same endocrine activities (150).

There are also other natural ligands of the GHS-R 1a. Besides adenosine that binds and activates the receptor (112, 154, 155), it has been demonstrated that CST, a neuropeptide, binds with high affinity the GHS-R 1a in human hypothalamus and pituitary tissues (19, 112, 154, 172). CST is a recently described neuropeptide showing high structural homology with SS (173–188) that binds to all SS receptor subtypes with an affinity (1–2 nM) close to that of SS (103, 189, 190). In fact, in humans as well as in animals, CST and SS exhibit the same endocrine activities (191, 192). The existence of specific receptors that selectively bind SS or CST has been hypothesized (189, 190), based on evidence that CST possesses an action profile different from SS (189, 193, 194) and on the fact that CST and SS are often coexpressed in the same neurons but are regulated by different stimuli (189, 195, 196). Given these findings, the ability of CST to bind the GHS-R 1a is of particular relevance because SS and its fragments do not bind the same receptor (19, 112, 154, 172). Interestingly, the classical synthetic SS analogs, *i.e.*, octreotide, lanreotide, and vapreotide, bind the GHS-R 1a with an affinity lower than that of CST (19, 112, 154, 172). These findings have generated the hypothesis that CST could play a potential role in the control of somatotroph secretion via both SS and GHS-Rs. Where this is the case, CST would represent the link between ghrelin and the SS/CST system that had not previously been demonstrated.

On the other hand, the GHS-R 1a is unlikely to be the only

GHS-R (see *Section III. A*). It has already been demonstrated that a GHS-R subtype able to bind nonacylated as well as acylated ghrelin exists and likely mediates biological activities (27). This report might provide another explanation besides the existence of different pockets within the GHS-R 1a to explain the observation that different molecules are able to bind, but not activate it (112).

Another GHS-R subtype likely mediates the influence of ghrelin on insulin secretion and glucose metabolism, because this effect is not shared by synthetic peptidyl GHS that generally mimic ghrelin actions (35). The cardiovascular receptor that only binds peptidyl GHS is unlikely to be a GHS-R, because it does not bind ghrelin (25, 26, 49, 49, 167, 197).

Given this complexity, it is clear that further studies are required to clarify whether ghrelin is the sole ligand or one of a number of ligands activating the GHS-R 1a and whether that receptor used for ghrelin isolation is the sole receptor or one of a group of receptors for such ligands.

IV. Control of Ghrelin Secretion: Indications for Its Importance in Biology

Although the majority of circulating ghrelin originates from the stomach and the small bowel (3, 124), ghrelin is expressed in a variety of tissues that include the stomach, the intestine, the pituitary, the placenta, lymphocytes, the testes, the lungs, the kidney, the pancreas, and the hypothalamus (1–12).

The activation level of the ghrelin receptor(s) is the parameter that is decisive for ghrelin action. Regulation of the extent and magnitude of ghrelin action therefore involves several mechanisms that are, at least in part, independent. These mechanisms include: 1) the regulation of transcription and translation of the ghrelin gene; 2) the level of enzymatic activity of the putative acyl transferase that is responsible for the posttranslational octanoylation of the ghrelin molecule; 3) secretion rates of the bioactive ghrelin molecule; 4) putative enzymatic processes deactivating circulating ghrelin; 5) possible influence of ghrelin binding proteins on the hormone's bioactivity; 6) variable accessibility of target tissue (*i.e.*, blood-brain barrier transport); 7) clearance or degradation of ghrelin by kidney or liver passage; 8) circulating concentration of additional endogenous ligands or other possibly cross-reacting hormones; 9) the amount of expression of ghrelin receptor(s) in target tissue; and 10) their sensitivity to the level of intracellular signaling mechanisms. Most studies to date have focused on changes in gastric ghrelin mRNA expression or variation of circulating ghrelin concentration as quantified by immunoassay measurements from plasma samples. The search for a ghrelin activating acyltransferase, for possible additional endogenous ligands to ghrelin receptor(s), and for specific ghrelin binding proteins is still ongoing. However, a few studies have started to shed light on important issues such as blood-brain barrier transport of ghrelin (198) and the regulation of ghrelin receptor expression, *i.e.*, in the hypothalamus (199). Analysis of the regulation of ghrelin expression levels in tissues other than stomach is hardly possible due to the small amounts of peptide present in these organs.

The measurement of ghrelin immunoreactivity involves technical difficulties, which imply that all results based on the concentration of circulating ghrelin as quantified by immunoassays should still be interpreted with much caution. Although commercially available ghrelin immunoassays are very likely to reflect total ghrelin peptide concentration, reliable methods to routinely quantify individual ghrelin species are still not available. An ideal tool would be a sensitive and specific sandwich immunoassay based on two monoclonal antibodies recognizing an epitope associated with the octanoyl side chain and another one at the C-terminal end of the 28-amino residue peptide. Existing assays targeting the C-terminal end of the molecule miss potential crucial changes in the percentage of circulating octanoylated ghrelin. Immunoassays targeting the octanoyl side chain of the molecule might suffer from interference from other octanoylated molecules, which are likely to exist. Therefore, plasma ghrelin levels as described by several research groups vary according to the antiserum used and are influenced by varying techniques, such as the use of an additional extraction step. Furthermore, there are controversial data on the stability of ghrelin in plasma samples, the influence of storing time and thaw/freeze cycles, pH changes, or the necessity for enzyme-blocking additives to plasma samples before measuring ghrelin. Although absolute plasma ghrelin levels and ghrelin reference standards still have to be determined, it appears reasonable to investigate ghrelin regulation and physiology by measurement of relative differences of circulating total ghrelin levels using available immunoassays. In the following section, existing knowledge regarding the regulation of ghrelin expression and secretion is summarized, although this current model might have to be revised substantially when details of the unknown mechanisms and open questions mentioned above become available.

Ghrelin mRNA expression as well as ghrelin peptide have been localized most impressively in the oxyntic glands, specifically the X/A-like cells of the gastrointestinal tract. These cells represent about one fourth of all endocrine cells in the oxyntic mucosa, whereas other cells within these glands, such as histamine-rich enterochromaffin-like cells (~70%) and D-(SS) cells (10%), are not ghrelin positive (3, 124). Ghrelin is found from the stomach to the colon with caudally decreasing density of expression, which is in agreement with the fact that X/A-like cells are not strictly confined to oxyntic mucosa (3, 124). Ghrelin-containing enteroendocrine cells mostly have no continuity with the lumen, probably respond to physical and/or chemical stimuli from the basolateral side, and are closely associated with the capillary network running through the lamina propria (3, 124). A recent study shows that ghrelin-secreting cells occur as open- and closed-type cells (open or closed toward the lumen) with the number of open-type cells gradually increasing in the direction from the stomach to the lower gastrointestinal tract (200).

Although a classical endocrine role for ghrelin as a peptide hormone that is secreted into this capillary network is evident, local paracrine activities of ghrelin might play an additional role (3, 124). Removal of the stomach or the acid-producing part of the stomach in rats reduces serum ghrelin concentration by approximately 80%, further supporting the view that the stomach is the main source of this endogenous

GHS-R ligand (3, 124). However, in a recent study, plasma levels of ghrelin after total gastrectomy gradually increased again (133), suggesting that the stomach is the major source of circulating ghrelin but that other tissues can compensate for the loss of ghrelin production after gastrectomy (201). Cummings and co-workers (202–204) showed that total plasma ghrelin is hardly detectable after gastric bypass surgery, a phenomenon that is interpreted as a shutdown of gastric ghrelin-secreting cells due to a lack of contact with ingested nutrients. On the other hand, no evidence for Roux-en-Y gastric bypass surgery *per se* having an effect on ghrelin levels, independent of weight loss, was obtained (205).

Small concentrations of ghrelin are found in the pancreas (206), where ghrelin immunoreactivity was localized in a subgroup of endocrine cells that are also immunopositive for pancreostatin. Neither colocalization of ghrelin and enterochromaffin-like cells nor colocalization of ghrelin and D cells was found in the pancreas. Therefore, it was concluded that the ghrelin-positive cells must belong to the third subpopulation, the A cells (124). We have recently shown that ghrelin is produced by a fraction of endocrine pancreatic cells, namely the insulin-producing H cells, as confirmed by double immunofluorescence studies (169). Ghrelin mRNA and ghrelin peptide have also been detected in rat and human placenta in which they are expressed predominantly in cytotrophoblast cells and very sporadically in syncytiotrophoblast cells. A pregnancy-related time course, represented by an early rise of ghrelin expression in the third week and decreasing in the latest stages of gestation, but still detectable at term, was found in rats. In human placenta, ghrelin is mainly expressed in the first half of pregnancy and is not detectable at term (5). Involvement of ghrelin in fetal-maternal interaction via autocrine, paracrine, or endocrine mechanisms is discussed (5). In addition to the presence of GHS-R in pituitary cells, ghrelin mRNA expression and ghrelin immunopositive cells were detected in normal pituitary cells as well as in pituitary tumors (6, 22, 163). This suggests a possible autocrine or paracrine role for hypophyseal ghrelin, although only about 5% of the detected ghrelin peptide derived from the pituitary has been found to be octanoylated (6, 163); Ghrelin synthesis has been shown by the use of real-time PCR and direct sequencing of the PCR product in corticotroph, thyrotroph, lactotroph, and somatotroph cells of the pituitary (6, 163), whereas the highest levels of ghrelin expression were found in nonfunctioning adenomas, moderate ghrelin levels were found in GH-producing adenomas and gonadotropin-producing adenomas, and the lowest level was found in prolactinomas (6, 163). The same group detected small amounts of ghrelin in the adrenal glands, esophagus, adipocytes, gall bladder, muscle, myocardium, ovary, prostate, skin, spleen, thyroid blood vessels, and liver using real-time PCR (22). By combinatory use of reverse-phase HPLC and RIA of purified aliquots, production of ghrelin in mouse kidney was shown in greater abundance than in mouse plasma. In addition, preproghrelin production was shown in rat mesangial cells and mouse podocytes, indicating the production of ghrelin in kidney, glomerulus, and renal cells and suggesting possible paracrine roles for ghrelin in the kidney (4). In several regions of the brain, ghrelin was detected by means of immunohisto-

chemistry. However, the location of the few ghrelin-positive neurons that were identified depends on the recognized epitope of the ghrelin antiserum used (51, 207). Very recently, ghrelin expression has been demonstrated in a previously uncharacterized group of neurons adjacent to the third ventricle. These neurons send efferents onto NPY, AGRP, pro-opiomelanocortin (POMC), and CRH neurons, suggesting that local ghrelin would represent a novel regulatory circuit controlling energy homeostasis (Fig. 3) (123). However, ghrelin found in the hypothalamus still has to be considered as possibly derived from the periphery, and the participation of hypothalamic ghrelin in neuropeptidergic energy balance control mechanisms remains questionable (51). Human ghrelin as well as GHS-R mRNA expression was shown by real time-PCR and confirmed by DNA-sequencing in human T-lymphocytes, B-lymphocytes, and neutrophils from venous blood of healthy volunteers. Large interindividual differences in ghrelin mRNA expression levels were described; however, cell type and maturity of the cells did not seem to have an influence on ghrelin production in immune cells (9, 208). Interestingly, it has recently been shown that small-molecule GHS have a considerable immune-enhancing effect (9, 208).

In summary, ghrelin is expressed primarily by the stomach and secondarily by lower parts of the gastrointestinal tract. Ghrelin expression levels in other organs are relatively low in comparison, and although its physiological significance as a paracrine factor in these tissues is the subject of ongoing studies, an endocrine role for extragastrintestinal ghrelin appears to be unlikely. Published studies on the regulation of ghrelin expression have therefore primarily focused on gastric ghrelin. Additional caution, however, has to be used by extrapolating from studies on ghrelin expression or secretion in rodents to the physiological regulation of ghrelin in humans.

Only a few determinants of circulating ghrelin concentration have been identified to date. Spontaneous ghrelin secretion is pulsatile in rats (44), and 24-h ghrelin variation is reported in humans by some (202, 209), but not by others (210). It is unclear whether aging is a determinant of serum ghrelin concentrations. Ghrelin secretion is reported to be sexually dimorphic in humans, with women in the late follicular stage having higher levels than men (210). Among determinants of ghrelin secretion, the most important appear to be insulin (211–217), glucose (33, 218–222), and SS (210, 223–227). Possibly, GH (224, 228–232), leptin (204, 233–237), melatonin (238), thyroid hormones (239), glucagon (240), and the parasympathetic nervous system (32, 241) also play a role in ghrelin metabolism. In mice, rats, cows, and humans, ghrelin mRNA expression levels or circulating ghrelin levels are increased by food deprivation and appear to be decreased postprandially (33, 137, 202, 209, 242–246). This phenomenon, which has been confirmed by several study groups in the recent past, further supports the emerging concept of ghrelin as an endogenous regulator of energy homeostasis. In addition to fasting, ghrelin expression can be stimulated in rats by insulin-induced hypoglycemia, leptin administration, and central leptin gene therapy (233, 243). Ingestion of sugar suppresses ghrelin secretion in rats (33). These observations indicate a direct inhibitory effect of glucose/caloric

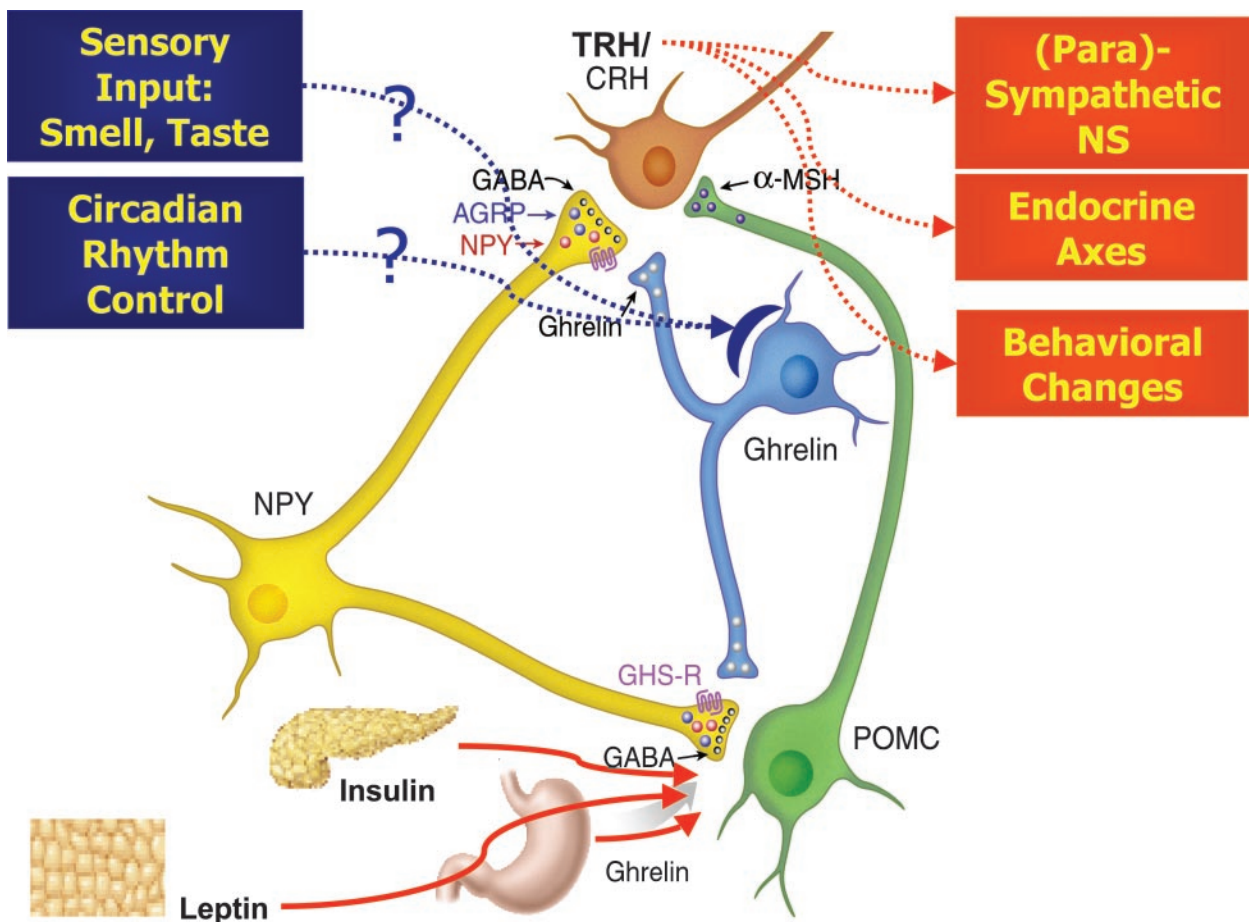


FIG. 3. Within a complex neuroendocrine network, afferent signals from the periphery are continuously indicating acute and chronic changes of energy balance, whereas integrative regulatory circuits in the CNS are modulating efferent pathways to adjust orexigenic drive, energy expenditure, and nutrient metabolism accordingly. Ghrelin is thought to be significantly involved in this neuroendocrine network regulating energy balance in at least two ways: 1) as a peripheral hormone from the stomach that, along with other signals such as insulin or leptin, informs the central energy balance control when energy stores diminish, to increase orexigenic drive and decrease energy expenditure; and 2) as a hypothalamic neuropeptide expressed in previously unidentified population of neurons adjacent to the third ventricle between the ventromedial hypothalamus, the dorsal hypothalamus, the paraventricular nucleus, and the arcuate nucleus. Efferents of ghrelin-expressing neurons project to key circuits of central energy balance regulation and may balance the activity of orexigenic NPY/AGRP with anorectic POMC neurons to modulate a resulting efferent message, which is believed to be mediated in part by TRH and CRH. Dotted lines indicate indirect effects or actions, whereas *question marks* indicate unproven actions (51, 233, 351, 352, 353).

intake on ghrelin-containing X/A-like cells in the oxyntic mucosa of the rat stomach rather than an exclusively insulin-mediated effect. That insulin is an independent determinant of the circulating ghrelin concentration has recently been shown by several study groups using hyperinsulinemic euglycemic clamps in humans (211, 212). These findings add further evidence connecting ghrelin to mechanisms governing energy balance and the regulation of glucose homeostasis.

Further insight into the apparently complex mechanisms regulating ghrelin secretion is based on studies showing an increase of circulating ghrelin levels in rats after surgical interventions such as vagotomy and hypophysectomy (32, 228). Human GHD, however, is not associated with increased plasma ghrelin levels (247). On the other hand, administration of synthetic GH to rats decreases circulating ghrelin levels, and therapeutic interventions causing normalization of GH levels in patients with acromegaly increase ghrelin levels (228–230). These partial, somewhat contradictory, ob-

servations could be due to species-specific differences between rodents and humans, or they could indicate that an acute, but not chronic, change of GH levels modulates ghrelin concentration. An increase in circulating ghrelin levels in rats with age, up to 90 d (248), has not been confirmed as yet for human populations. Early studies seem to indicate, however, that human ghrelin secretion decreases with age during childhood (249). A pathophysiological factor that might increase circulating ghrelin levels is the production of ghrelin by certain endocrine tumors of the stomach and the intestine such as carcinoids (126). A recent, very intriguing series of clinical studies by Cummings *et al.* (202, 209) indicates that each daily meal is followed by decreases of circulating ghrelin levels, most likely reflecting acutely reduced ghrelin secretion from the gastrointestinal tract. The authors speculate in addition that an observed premeal rise of circulating human ghrelin levels might reveal a role for ghrelin in meal initiation. This theory fits well with the observation that ghrelin administration in healthy volunteers causes hun-

ger (15, 16, 35). Ghrelin might also reflect the acute state of energy balance, signaling to the central nervous system (CNS) in times of food deprivation that increased energy intake and an energy-preserving metabolic state are desirable (33, 51). In addition, one biological purpose of these multiple roles of ghrelin might be to ensure the provision of calories that GH requires for growth and repair.

In summary, ghrelin expression and ghrelin secretion are mainly influenced by changes in energy balance and glucose homeostasis, followed by alterations of endocrine axes such as increasing GH concentrations. Based on the currently available data, ghrelin therefore seems to be part of a molecular regulatory interface between the energy homeostasis, glucose metabolism, and physiological processes regulated by the classical endocrine axes such as growth and reproduction.

V. Physiological and Pathophysiological Actions of Ghrelin

A. Hypothalamic-pituitary actions

1. *GH-releasing activity.* Ghrelin and synthetic GHS possess strong and dose-related GH-releasing activity that is more marked in humans than in animals (1, 14–16, 18, 20, 250–252). Natural and synthetic GHS stimulate GH release from somatotroph cells *in vitro* (1, 62, 65, 253–265), probably by depolarizing the somatotroph membrane and by increasing the amount of GH secreted per cell (258). A stimulatory effect of GHS on GH synthesis has also been reported by some authors (260). *In vitro*, the GH-releasing activity of GHS is lower than that of GHRH (62, 65, 254, 266). Under this condition, an additive or a true synergistic effect of GHS on GHRH-stimulated GH has been reported (65, 254–256, 262, 263). At the pituitary level, the stimulatory effect of GHS on GH secretion from somatotroph cells is abolished by specific GHS antagonists but not by GHRH antagonists (65, 255, 258). SS inhibits the stimulatory effect of GHS on GH secretion from pituitary (253, 254, 266, 267). However, there is evidence suggesting that GHS could act by antagonizing the inhibitory activity of SS on GH release by counteracting its hyperpolarizing effect on somatotroph cell membranes (258).

The GH-releasing activity of GHS is clearly greater in hypothalamic-pituitary preparations than in pituitary preparations (268), in agreement with evidence that their stimulatory effect on GH secretion is greater *in vivo* than *in vitro* (65, 269). Indeed, *in vivo*, GHS show synergistic effects on GHRH-stimulated GH release (65, 270) and prevent the normal cyclic refractoriness to GHRH (269). To confirm that the most important action of ghrelin and synthetic GHS to release GH takes place at the hypothalamic level, the GH-releasing effect of GHS is markedly reduced, although not abolished, in animals with lesions of the pituitary stalk (271–273).

At the hypothalamic level, ghrelin and GHS act via mediation of GHRH-secreting neurons as indicated by evidence that passive immunization against GHRH, as well as pretreatment with GHRH antagonists, reduces their stimulatory effect on GH secretion (65, 269, 274–276). An increased release of GHRH in portal blood of the pituitary after GHS administration has also been shown in sheep (277). In terms

of GH release, GHS are active in dwarf mice (278) but not in the lit/lit mouse, which has no pituitary GHRH receptors (279). However, in both GHD rats and lit/lit mice, systemic administration of GHS activates a subpopulation of hypothalamic arcuate neurons where the highest density of GHRH-secreting neurons is present. Furthermore, because the lit/lit mouse pituitary does not release GH after GHS administration, the finding that the central actions of GHS remain intact in these animals suggests the possible existence of two subpopulations of putative GHS-Rs (280, 281).

At the hypothalamic level, ghrelin and GHS do not inhibit SS secretion *in vitro* in rats; however, some inhibition of hypothalamic SS secretion after exposure to GHS was observed *in vivo* in pigs (137, 227, 282–284). Interestingly, GHS likely act as functional SS antagonists at either the hypothalamic or the pituitary level (71, 258). *In vitro* and *in vivo*, GHS and GHRH induce homologous but not heterologous desensitization (61, 65, 78, 254, 255, 262, 263, 266, 269). Prolonged administration of GHS in animals increases IGF-I levels (61, 87, 93, 267, 285, 286), indicating that they are able to enhance the activity of the GH/IGF-I axis.

As anticipated, ghrelin and synthetic GHS show their most potent GH-releasing activity in humans (1, 14–16, 18, 20, 250–252) and in animals *in vivo* because GHS and GHRH are synergistic, indicating that they act, at least partially, via different mechanisms (14, 20, 71, 120). Nevertheless, GHS require GHRH activity to fully express their GH-releasing effect (14, 20, 71, 120). In humans, the GH response to GHS is strongly inhibited, although not abolished, by GHRH receptor antagonists as well as by hypothalamopituitary disconnection (272, 287–289). This is in agreement with the assumption that the most important action of GHS takes place at the hypothalamic level (14, 20, 61, 63, 65, 120). Moreover, patients with a GHRH receptor deficiency show no increase in GH secretion in response to GHS stimulation (290–292) but maintain their ability to increase PRL as well as ACTH and cortisol secretion after GHS stimulation (290–292).

There is evidence, both in humans and in animals, that ghrelin and synthetic GHS can also act as functional SS antagonists at both the pituitary and hypothalamic levels (20, 71, 191, 218, 227, 258, 293). In fact, in humans the GH response to ghrelin and GHS is not enhanced by inhibition of SS release (induced by indirect cholinergic agonists or arginine), whereas it is partially refractory to the inhibitory effect of substances acting via stimulation of hypothalamic SS secretion (such as acetylcholine receptor antagonists, β -adrenoceptor agonists, glucose) (20, 191). Indeed, ghrelin and GHS are even partially refractory to the inhibition of substances that act on the pituitary somatotroph cells, such as free fatty acids and even to exogenous SS (20, 191, 293, 294). GHS are also partially refractory to the negative feedback of GH itself and to the negative feedback of IGF-I action (193, 295, 296).

In humans, as in animals, there is evidence that GHS and GHRH induce homologous, but not heterologous, desensitization (64, 218, 261, 297–302). Homologous desensitization to the activity of GHS has been shown during GHRP infusion (297, 299, 300), but not after intermittent oral or intranasal daily administration of the peptide for up to 15 d (303, 304).

On the other hand, prolonged administration of GHS by the parenteral, intranasal, or oral route enhances spontaneous GH pulsatility over 24 h and increases IGF-I levels in normal young adults, as well as in short children and elderly subjects (11, 85, 86, 299, 300, 304–306).

The GH-releasing effect of GHS undergoes marked age-related variations, increasing at puberty. It plateaus in adulthood and decreases during further aging (20). The mechanisms underlying these variations differ by age. The enhanced GH-releasing effect of GHS at puberty, for instance, is caused by the positive influence of increased serum estrogen levels, which increase GHS-R expression (110, 196, 307–311). However, estrogen insufficiency does not fully explain the reduced GH response to GHS in postmenopausal women (20, 196, 312–314). In agreement with the reduction in hypothalamic GHS-Rs in human aging, the GH response to hexarelin in elderly subjects is further increased, but not restored, by supramaximal doses (20, 24, 307). The most important mechanism accounting for reduced GH-releasing activity of GHS in aging is probably represented by age-related variations in neural control of somatotroph function, including GHRH hypoactivity and somatostatinergic hyperactivity (20, 314). On the other hand, it has also been hypothesized, but not proven, that the age-related decline in GH secretion might reflect a decrease in activity of the endogenous GHS system (*i.e.*, ghrelin release and/or receptor expression) (24, 70, 314, 315). As with GHS, the GH-releasing effect of ghrelin is independent of gender but undergoes age-related decrease. Again, the effect of ghrelin on lactotroph and corticotroph secretion is age and gender independent (316).

Despite the strong GH-releasing effects of ghrelin and GHS, whether GH release is the most important physiological action of ghrelin has been recently questioned. In fact, GHRH antagonist strongly inhibits 24-h GH secretion, whereas it does not affect circulating ghrelin levels (210). Moreover, ghrelin does not mediate the GH response to provocative stimuli such as insulin-induced hypoglycemia (213, 214), as well as GH rebound after withdrawal of SS infusion (223). These observations are in agreement with evidence from animal studies showing that ghrelin secretion is pulsatile and is associated much more with food intake than with GH pulses (44).

Theoretically, ghrelin or GHS could have diagnostic and therapeutic implications based on the strong and reproducible GH-releasing effects of orally active GHS.

Particularly when combined with GHRH, ghrelin and GHS can be used for one of the most potent and reliable stimulation tests to evaluate the capacity of the pituitary to release GH for the diagnosis of GHD (252, 317–320). Provided that appropriate cut-off limits are established, these tests using GHS for the diagnosis of GHD are as sensitive and specific as an insulin tolerance test, the gold standard test for the diagnosis of GHD (252, 318, 319). Long-acting and orally active ghrelin analogs might represent an anabolic treatment in frail elderly subjects. This potential treatment modality is based on the rationale that age-related reduction in the activity of the GH/IGF-I axis probably accounts for changes in body composition, structure functions, and metabolism in normal elderly subjects that are remarkably similar to those

in GHD adults (321, 322). Also, the potential pituitary GH release in aged subjects is still remarkably intact, given the fact that the appropriate stimuli are used (322). Finally, GH-releasing substances would represent a more physiological approach to increase endogenous GH pulsatility than a single daily dose of recombinant human GH (321, 322).

At present, there is no definite evidence that shows the therapeutic efficacy of ghrelin analogs as anabolic agents acting via rejuvenation of the GH/IGF-I axis in elderly subjects, although some benefits in osteoporosis have been reported (99, 102).

2. PRL- and ACTH-releasing activities. Activity of both ghrelin and synthetic GHS is not fully specific for GH, because it also includes stimulatory effects on both the lactotroph and corticotroph system (16, 18, 20, 63, 250, 323, 324). However, some synthetic GHS that exclusively stimulate GH secretion have been reported (106). The stimulatory effect of ghrelin and its analogs on PRL secretion in humans is far less age and gender dependent than the effect on GH secretion (316).

The stimulatory effect of GHS on the activity of the hypothalamus-pituitary-adrenal axis in humans is remarkable and similar to that of the administration of naloxon, vasopressin, and even CRH. Interestingly, the effect of ghrelin on ACTH secretion is even more pronounced than that elicited by synthetic GHS (16, 18, 69, 325–330). However, this ACTH release after GHS administration appears to be an acute neuroendocrine effect that attenuates during prolonged treatment (14, 20, 70, 85, 86, 285, 331).

The GHS-induced ACTH release is independent of gender but shows peculiar age-related variations (331). It increases at puberty, then shows a reduction in adulthood and, again, a trend toward an increase in aging when the GH response to these molecules is clearly reduced (191, 316, 325, 331).

Under physiological conditions, the ACTH-releasing activity of GHS is entirely mediated via the CNS (20, 272, 331, 332). These mechanisms via the CNS not only include CRH- and/or vasopressin-mediated actions (20, 137, 325, 327, 328, 330, 331, 333) but also via NPY and/or γ -aminobutyric acid (GABA) (160, 283, 334). The ACTH response to natural and synthetic GHS is generally sensitive to the negative cortisol feedback mechanism (20, 105, 331, 334). However, the stimulatory effect of ghrelin and GHS on corticotroph secretion is exaggerated and higher than that of human CRH in patients with pituitary ACTH-dependent Cushing's disease, probably reflecting a direct action of ghrelin and GHS on the pituitary ACTH-secreting tumor cells (20, 121, 331, 335–337). Interestingly, the administration of CRH to humans does not induce any significant increase in ghrelin secretion (230). In agreement with the presence of ghrelin and GHS-R expression in ectopic ACTH-secreting tumors, exaggerated ACTH and cortisol response to GHS has also been observed in patients with ectopic ACTH-dependent Cushing's syndrome (121, 163, 166, 331). These observations, however, reduce the potential use of GHS in testing ACTH secretion to distinguish patients with pituitary from ectopic ACTH-dependent hypercortisolism.

B. Central actions of ghrelin and GHS

1. *Effects on food intake.* Years before ghrelin was discovered, sporadic and greatly neglected reports on observations in rodents indicated that some GHS might possess orexigenic activity (338–341). Rumors about GHS-induced ravenous hunger attacks in children with idiopathic short stature occurring within the framework of clinical studies on GHS have never been officially confirmed. A research group led by S. Dickson had, however, gathered a substantial amount of very intriguing data during the last decade showing GHS-induced neuronal activity in hypothalamic areas that are currently considered the central processing unit controlling energy balance (160, 199, 279, 280, 342–345). A dense expression of the G protein-coupled receptor GHS-R 1a has been shown on those neurons, and it is bound and activated by ghrelin as well as by other GHS and GHRP (13, 113, 114, 158). Still, it was a surprise to many when ghrelin, the endogenous ligand of the GHS-R (1, 143), emerged as one of the most powerful orexigenic and adipogenic agents known in mammalian physiology (33, 34, 52, 70). At first, it was puzzling to link adipogenic effects to a hormone that had originally been discovered as a potent secretagogue of a lipolytic hormone, GH (346, 347). However, a rapidly growing body of data reflecting a previously unidentified interface between energy balance regulation, glucose homeostasis, and hypothalamic neuropeptides started to make sense as an evolving mosaic drawn together by ghrelin. Similar to the discovery of the satiety effects of leptin that indicated adipocytes as endocrine organs, the observation of ghrelin's involvement in energy balance regulation is pointing to an additional endocrine role for the stomach as well (1, 124). Very recently, ghrelin expression was found in a previously uncharacterized group of neurons adjacent to the third ventricle between the dorsal, ventral, paraventricular, and arcuate hypothalamic nuclei. These neurons send efferents onto key hypothalamic circuits, including those producing NPY, AGRP, POMC, and CRH. Within the hypothalamus, ghrelin mostly stimulated the activity of arcuate NPY neurons in the paraventricular nucleus, so the release of ghrelin may stimulate the release of orexigenic peptides and neurotransmitters, thus representing a novel regulatory circuit controlling energy homeostasis (Fig. 3) (123, 348–352).

Ghrelin administration in rodents causes weight gain (33, 39, 40, 353). This effect would not be as astonishing if it was merely reflected by longitudinal growth or at least by an increase in lean mass, effects that one would expect to occur after stimulation of GH secretion (354). However, a still growing amount of data generated in rodents clearly showed that ghrelin-induced weight gain is based on accretion of fat mass without changes in longitudinal skeletal growth and with a decrease, rather than an increase in lean (muscle) mass (33). These findings have not only been confirmed by several groups but have also been repeated using synthetic ghrelin receptor (GHS-R) agonists NNC 26-0161 (ipamorelin), GHRP-2, and GHRP-6 (353, 355). Changes in body weight induced by ghrelin administration become significant in rodents after no more than 48 h and are self-evident at the end of 2 wk (33, 353). Changes in fat mass induced by GHS have been quantified using dual energy x-ray absorptiometry

measurements specifically adapted for analysis of rodent body composition and have also been confirmed using chemical carcass analysis (33, 353, 355), or by measuring the weight of omental and retroperitoneal fat pads (355). Currently, it seems likely that the effects that are causing a positive energy balance are mediated via leptin-responsive neurons in specific regions of the hypothalamus (31, 39, 51, 159, 199, 353, 356, 357). However, the possibility of direct effects of ghrelin on adipose tissue [where GHS-R mRNA expression has been shown by PCR (1)], as well as effects on the hypothalamus-pituitary-adrenal axis (20, 34), *i.e.*, a ghrelin-induced Cushing's syndrome, still have to be ruled out as possible phenomena contributing to ghrelin-induced adiposity.

To find the physiological mechanism behind all these observations on ghrelin and energy homeostasis, the rapidly evolving field of research focusing on body weight and appetite regulation (233, 356, 358–360) has to be integrated with existing knowledge regarding GHS and their actions (70, 73, 314). Energy balance is achieved when energy intake is equal to energy expenditure (356). A positive energy balance, leading to weight gain, occurs when calories ingested, digested, and reabsorbed exceed calories expended (356). Like leptin, but in an opposite manner, ghrelin administered to rodents influences both energy intake and metabolism (51).

The earliest published data on the orexigenic effects of GHS are from Locke *et al.* (338), showing an increase in food intake after intracerebroventricular administration in rats without affecting plasma GH response. Similar effects have been shown by several other groups (339–341, 355). These effects were described as most likely being independent of GH and could not be prevented by blockade of the GHRH pathway (340).

Once ghrelin was found, we observed that it stimulated food intake in rodents (33). This effect is dose-dependent and occurs more powerfully after central than after peripheral administration (33), suggesting a central mechanism of action.

The increase in food intake after ghrelin injection in rodents occurs rapidly [less than 60 min (34)], which causes this effect to be easily missed by traditional methods of daily food intake measurements (measurement of food weight every 24 h). The orexigenic action of ghrelin (when administered centrally) is comparable to that of the brain-derived NPY and is more potent than that of any other orexant (34). Although peripherally injected GHS or ghrelin does have less impressive (353), predominantly acute, and maybe solely temporary orexigenic effects, ghrelin continuously administered into the third ventricle causes potent and constant stimulation of appetite in rats (33). However, further studies (*i.e.*, involving mice with tissue-specific disruption of the ghrelin gene) will have to prove the existence of an endogenous ghrelin tone that supports the putative relevance of ghrelin for physiological appetite regulation and metabolic control. Some experiments involving central administration of ghrelin antiserum or GHS-R antagonists (39) already provide some framework for this concept.

In a series of elaborate studies, Shuto *et al.* (361) recently showed that expression of antisense GHS-R mRNA under the control of the promoter for tyrosine hydroxylase in transgenic rats selectively attenuates GHS-R protein expression in

the arcuate nucleus and consecutively decreases GH secretion, food intake, and body fat mass, because these antisense GHS-R mRNA-expressing rats had lower body weight and less adipose tissue than the control rats. Moreover, daily food intake was reduced, and the stimulatory effect of GHS treatment on feeding was abolished. These results, however, should be interpreted with caution because of the potential for limited specificity when an antisense approach is used to generate transgenic animals. Anyway, GHS that have been shown to have orexigenic activity so far include GHRP-2, ipamorelin, GHRP-6, hexarelin, and several of its analogs (34, 340, 341, 353, 355).

Unlike other comparably potent orexigenic agents (NPY, AGRP, melanin-concentrating hormone) that are solely active when injected into the brain (233, 362, 363), peripherally administered synthetic ghrelin and ghrelin receptor analogs still exhibit orexigenic and adipogenic effects (70). This does not necessarily mean that an acylated peptide such as ghrelin is capable of being transported across the blood-brain barrier. Even if early studies indicate that minuscule amounts of ghrelin are transported across the blood-brain barrier in the blood-to-brain direction, (198, 364, 365), ghrelin might still have some of the hypothalamic actions because those hypothalamic areas that are crucial for the regulation of energy homeostasis, such as the ventromedial part of the arcuate nucleus, may not be completely protected by the blood-brain barrier (Fig. 4) (366). Some of these areas (*i.e.*, the ventromedial arcuate nucleus) may therefore be accessible by molecules in the circulation (51). These hypothalamic nuclei intriguingly contain neurons that express the GHS-R (158) and might therefore be essential for the mediation of effects triggered by gastric or peripherally injected synthetic ghrelin (51, 70). The validity of this concept has been confirmed by Dickson and colleagues (161), who demonstrated that peripherally injected ghrelin induces increased expression of the early gene products c-Fos and EGR-1 in NPY-, AGRP-, and GHS-R-coexpressing neurons in the arcuate nucleus.

The network of neurons, neuropeptides, and receptors controlling energy balance is an extremely complex, multi-centered system (233). Based on early surgical and chemical deletion studies in rodents, the hypothalamus has long been recognized as a crucial interface between afferent peripheral signals, CNS wiring, and efferent neuroendocrine axes regulating energy balance in concert (356). Several recent reviews give excellent overviews on the principles in this fascinating and rapidly advancing field (233, 356, 358, 359).

According to current knowledge, it seems that two major hypothalamic pathways are the predominant mediators of ghrelin's influence on energy balance (39, 159, 353). One involves the NPY neurons (37, 362), and the other involves the melanocortin receptors and their agonistic and antagonistic ligands, the anorexigenic POMC-derived α MSH and the orexigenic AGRP, which is expressed in NPY neurons (367). Ghrelin increases AGRP and NPY after acute and chronic administration, and hypothalamic AGRP-mRNA expression levels are found to be up-regulated after chronic activation of the GHS-R for several weeks (31, 37, 39, 353). Complete absence of NPY in NPY-gene-disrupted mice does not influence ghrelin action. This virtual contradiction could also be explained by adaptive processes during the early

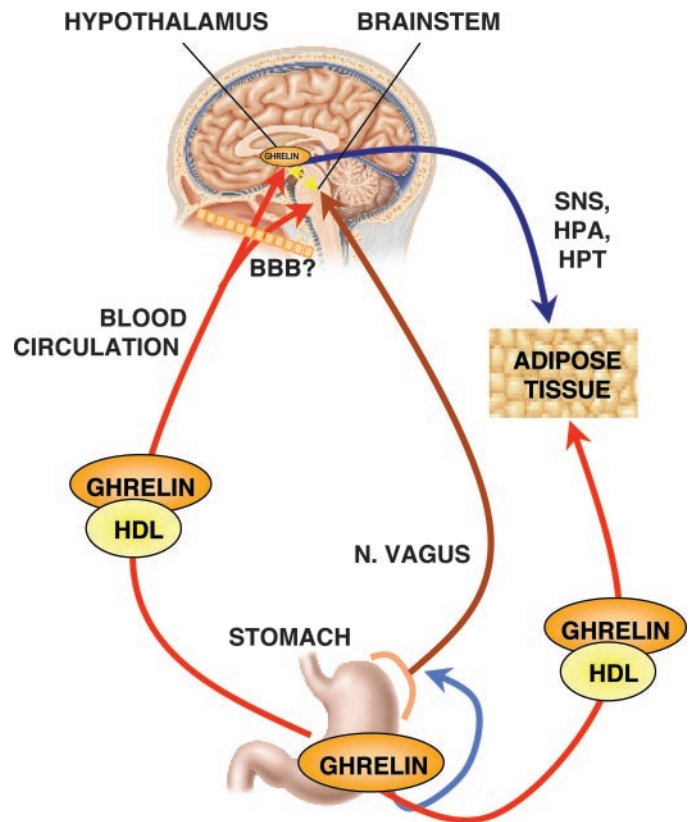


FIG. 4. Pathways by which ghrelin may influence chronic energy balance. Ghrelin produced by the stomach or the gut can be transported by the bloodstream to specific neuronal circuits situated in hypothalamus or the brainstem that are regulating food intake as well as energy expenditure. It still remains uncertain whether or not ghrelin has to cross the blood-brain barrier (BBB) to influence these central structures. During transport via circulating blood, serum HDLs and presumably other proteins such as albumin bind ghrelin. Ghrelin however may also signal the brain by activating the afferent vagal nervous system as either an endocrine or a paracrine signal directly at the stomach level. Ghrelin-responsive GHS-Rs are expressed at gastric vagal nerves, and vagotomy prevents some of ghrelin's effects on energy balance. Incoming information represented or triggered by ghrelin is, however, believed to be constantly sensed and analyzed in hypothalamus and the brainstem, independent from its origin or afferent pathway used. Based on constant integration of this and other afferent information about the status of acute and chronic changes in energy balance, an efferent response seems to involve several pathways to balance energy stores and adipose tissue mass. These mainly include the sympathetic nervous system (SNS), the hypothalamic-pituitary-adrenal (HPA) axis, and the hypothalamic-pituitary-thyroid (HPT) axis. In addition, ghrelin is thought to be produced in brain centers of energy balance control, and, although present there in very small amounts, brain-derived ghrelin might play an additional role in the regulation of energy homeostasis (51, 123, 152, 198, 372).

development of the NPY-gene-disrupted mice (368). Some studies show a prevention of the orexigenic effects when coadministering a NPY receptor antagonist with ghrelin (353); however, it has to be considered that NPY antagonist might also be acting through a more dominant pathway than the one controlled by ghrelin. We assume that the two pathways described above comediate the effects of ghrelin on energy balance, and furthermore speculate that NPY might be more important for acute effects, whereas AGRP might be

involved in both chronic and acute ghrelin action in the hypothalamus (51).

Other agents possibly mediating ghrelin signals in the hypothalamus are POMC, cocaine and amphetamine-regulated transcript, melanin-concentrating hormone, orexin (hypocretin) a/b, ciliary neurotrophic growth factor, GABA, and galanin (51, 356, 358).

Apart from an increase of food intake, other mechanisms can contribute to an increase in fat mass, such as a decrease in energy expenditure or reduced cellular fat oxidation (356). No significant changes of 24-h energy expenditure have been observed in rodents after ghrelin administration. Another effect that was detected by indirect calorimetry is an impressive increase of the respiratory quotient after ghrelin administration in rodents, independent of an increase in food intake (33). This phenomenon is interpreted as a shift from fat utilization to carbohydrate oxidation and has been referred to as nutrition partitioning (369).

Furthermore, there is some published evidence that ghrelin action might be mediated in part not only by efferent but also by afferent activity of the vagal nerve (137, 370). These data were generated by electrophysiological studies, in which iv administered ghrelin has been shown to decrease the afferent activity of the gastric vagal nerve at low doses (137). The described effects are in opposition to those of gastrointestinal satiety peptides such as cholecystokinin (371) and may add additional pathways to the growing number of signaling routes with which ghrelin is connected (Fig. 1, A and B) (52). More recently, it has been reported that blockade of the gastric vagal afferent abolished ghrelin-induced feeding, GH secretion, and activation of NPY-producing and GHRH-producing neurons in rats. This study suggested that the gastric vagal afferent is the major pathway conveying ghrelin's signals for starvation and GH secretion to the brain (372). However, it has to be emphasized that muscarinic receptor blockade by pirenzepine does not affect at all the endocrine activities of ghrelin in humans (373).

In summary, administration of ghrelin and of at least some of its receptor agonists generates a positive energy balance and increases adiposity in rodents via multiple mechanisms, including increased food intake and reduced fat oxidation, possibly along with decreased locomotor activity and adipocyte-specific effects. In addition, expression of GHS-R in rat adipocytes increases with age and during adipogenesis. Ghrelin *in vitro* stimulates the differentiation of preadipocytes and antagonizes lipolysis. Ghrelin may therefore play an important role in the process of adipogenesis in rats (374).

Possibly the most pressing question concerns the transferability and validity of the above-described findings in rodents to humans. Several recent clinical studies on the effects of ghrelin on GH secretion in humans have reported hunger sensations as the only noticeable side effect in up to 80% of the treated individuals (15, 35). Prospective clinical studies focusing on all aspects of energy balance using contemporary methods for the analysis of body composition, energy expenditure, metabolic and endocrine changes can help to clarify these issues. A first clinical study investigating these open questions was conducted by Wren *et al.* (40) who showed that iv administration of physiologically occurring

concentrations of ghrelin effectively triggers appetite and increases food intake in humans.

2. *Effects on sleep.* Alterations in the sleep pattern are a hallmark of functional correlates reflecting age-related changes in neurotransmitters and neuropeptides (375). A potential influence of GH and IGF-I on sleep pattern has also been suggested based on studies in GHD subjects, and it had been hypothesized that sleep pattern in aged subjects could reflect an age-related decrease in the activity of the GH/IGF-I axis (375). On the other hand, some studies reported that the acute administration of synthetic, peptidyl GHS can modify sleep pattern in normal subjects (92, 376, 377). Moreover, it has also been reported that prolonged treatment with oral MK-0677 (25 mg once daily) in elderly subjects increases the length of rapid eye movement sleep phases, meanwhile decreasing rapid eye movement latency (378). These findings from early studies with synthetic GHS agree with ongoing studies addressing the influence of ghrelin on sleep behavior (44, 379). In rats, there is evidence as well that ghrelin also affects sleep-wake patterns (44). Furthermore, ghrelin itself has been reported recently to be a sleep-promoting factor in humans (379).

3. *Effects on behavior.* Besides regulating eating behavior, it has recently been shown that ghrelin affects anxiety-like behavior in mice, via mechanisms involving the hypothalamic-pituitary-adrenal axis. Both intracerebroventricular and ip administration of ghrelin potently induce anxiogenic activities. In addition, administration of a CRH receptor antagonist significantly inhibits ghrelin-induced anxiogenic effects. Peripherally administered ghrelin significantly increases CRH mRNA expression in the hypothalamus. These findings suggest that ghrelin may have a role in mediating neuroendocrine and behavioral responses to stressors and that the stomach could play an endocrine role, not only in the stimulation of appetite, but also in the induction of anxiety (45).

C. Peripheral activities of synthetic and natural GHS

In agreement with the existence of specific ghrelin receptors in peripheral tissues (see Section III. A), peripheral endocrine and nonendocrine activities of these substances have been recently demonstrated. Apart from a potent GH-releasing effect, ghrelin and synthetic GHS control gastric motility and acid secretion, influence endocrine pancreatic function, alter glucose metabolism and cardiovascular functions, regulate adipocyte modulation of adipokines, and have anti-proliferative effects in neoplastic thyroid, mammary, and lung cell lines (Fig. 2).

1. *Gastroenteropancreatic actions.* Gastrectomy in rats reduces circulating ghrelin concentration by approximately 80%, in agreement with the assumption that the stomach is the main source of the endogenous GHS-R ligand (3, 124, 230). As discussed elsewhere in this review, small quantities of ghrelin are also expressed in other enteric tracts, as well as in the pancreas (1, 22, 124–126, 128, 135, 150, 169, 200, 206, 243, 245, 380–386).

It is not surprising that ghrelin also acts at the gastroenteropancreatic level, where GHS-R 1a and 1b expression has

been demonstrated (3, 7, 22, 30, 126, 150, 157, 200, 243). Interestingly, there is also a close structural relationship between the precursors of motilin and ghrelin, but only a 36% homology exists between the mature peptides (137). Also, the gastrointestinal motilin receptor 1a and the GHS-R 1a show a high degree of structural homology (112, 118). The similarity between ghrelin and motilin actions has recently been emphasized (112, 127, 134–140, 382, 387) and has been discussed elsewhere in this review. Also, circulating levels of ghrelin and glucagon-like peptide (GLP)-1 seem to be inversely related during glucose ingestion (388, 389). The clinical implication of this has not been determined.

Ghrelin stimulates gastric acid secretion and motility in rats (32, 136, 390), and circulating ghrelin levels are correlated with gastric emptying time in humans (242). However, Sibilia *et al.* (391) reported a centrally mediated inhibitory role of ghrelin and synthetic GHS on acid secretion in rats. The stimulatory actions of ghrelin are mediated by the cholinergic system because they are abolished by muscarinic blockade (32). Interestingly, the acetylcholine-mediated stimulatory effect of ghrelin on gastric acid secretion takes place, at least partially, at the central level (36). More recently, it has been clarified that stomach-derived ghrelin's signals for starvation and GH secretion are relayed to the brain by means of the vagal nerve (372). However, in humans, cholinergic blockade by pirenzepine has been shown unable to modify the endocrine activities of ghrelin (373). Interestingly, the potent prokinetic activity of ghrelin/motilin-related peptide has been recently confirmed and extended to allow for reversal of a gastric postoperative ileus in rats (136, 392).

Ghrelin and GHS-R 1a mRNA are present in normal and neoplastic endocrine pancreas (22, 30, 126, 163, 206, 393, 394).

Regarding the exocrine pancreas, it has been shown that ghrelin is a potent inhibitor of pancreatic cholecystokinin-induced exocrine secretion in anesthetized rats *in vivo* and in pancreatic lobes *in vitro*. These actions of ghrelin are indirect and may be exerted at the level of intrapancreatic neurons (42).

Regarding the endocrine pancreatic function, in addition to inconstant data on the expression of the classical GHS 1a (22, 30, 128, 169, 206), ghrelin has been demonstrated to be expressed by pancreatic endocrine α -cells in rat and human tissue by some authors (206) and by pancreatic β -cells by one group (169). It was reported that ghrelin is expressed in a quite prominent endocrine cell population in human fetal pancreas, and ghrelin expression in the pancreas precedes by far that in the stomach. Pancreatic ghrelin cells remain at lower numbers in adult islets. According to Wierup *et al.* (395), ghrelin is not coexpressed with any known islet hormone, and the ghrelin cells may therefore constitute a new islet cell type. Studies in animals reported conflicting results regarding the influence of ghrelin on insulin secretion (41, 206, 381). In fact, ghrelin was able to stimulate insulin secretion from isolated rat pancreatic islets (206) and *in vivo* (381, 393). On the other hand, insulin secretion from isolated rat pancreas, perfused *in situ* after stimulation with glucose, arginine, and carbachol, was found to be blunted by exposure to ghrelin that also reduced the SS response to arginine (41). These findings suggest that ghrelin exerts a tonic inhibitory regulation on insulin secretion from pancreatic

β -cells, contributing at least in rats to a restrained release during food deprivation. In agreement with this hypothesis, a clear negative association between ghrelin and insulin secretion has been found in humans as well as in animals by the majority of authors (44, 209, 211, 243, 245, 396), although not by all (397). Again in agreement with the assumption that ghrelin negatively modulates pancreatic β -cell secretion, at least transiently, it has been demonstrated recently that in humans, ghrelin induces a significant increase in human plasma glucose levels that is followed, surprisingly, by a reduction in insulin secretion (35, 316, 398). Coupled with the observation that acute as well as chronic treatment with GHS, particularly nonpeptidyl derivatives, induced hyperglycemia and insulin resistance in a considerable number of elderly subjects and obese patients (90, 97, 399), these observations suggest that ghrelin is a gastroenteropancreatic hormone, exerting a significant role in the regulation of insulin secretion and glucose metabolism. Ghrelin might integrate the hormonal and metabolic response to fasting that, at least in humans, is connoted by a clear-cut increase in GH secretion coupled with inhibition of insulin secretion and activation of mechanisms devoted to maintaining glucose levels (231, 399, 400). The negative association between ghrelin and GLP secretion adds further credibility to this hypothesis (395), whereas future studies will need to show whether GLP influences ghrelin secretion and vice versa. Regarding glucose levels, it has already been shown that ghrelin likely blocks the inhibitory effects of insulin on gluconeogenesis (401). Also, ghrelin secretion may be suppressed, at least in part, by an increased plasma glucose level as well as by insulin *per se*, as shown by hyperinsulinemic euglycemic clamp studies in healthy subjects (211, 214, 218). However, this observation also suggested that ghrelin could have direct stimulatory effects on glycogenolysis, and this action is likely mediated by a non-GHS-R 1a process, because it is not exerted by synthetic GHS (35). All data show that ghrelin secretion seems to be negatively associated with body mass while its levels are increased in anorexia nervosa and cachexia. Also, early morning, overnight fasting ghrelin concentrations seem to be decreased in obese subjects. This indicates the potential major impact of ghrelin on insulin secretion and glucose metabolism suggested by studies summarized above (211, 214, 218, 231, 399–401). Ghrelin may play an important role in the process of adipogenesis, at least in rats. In fact, ghrelin administration significantly increases the levels of peroxisome proliferator-activated receptor- γ 2 mRNA in primary cultured rat differentiated adipocytes. In addition, isoproterenol-stimulated lipolysis is significantly reduced by simultaneous ghrelin treatment in a dose-dependent manner *in vitro*. Moreover, ghrelin stimulates the differentiation of preadipocytes and antagonizes lipolysis (374).

In the context of the relationship between ghrelin and obesity, it is noteworthy that the only exception to the negative association between ghrelin and body mass is represented by obese patients with Prader-Willi syndrome (PWS) that show peculiarly elevated circulating ghrelin levels (402, 403). In a study by Haqq *et al.* (404) in children with PWS, fasting ghrelin concentrations were not significantly differ-

ent compared with normal weight controls but were higher than in obese children.

2. Cardiovascular and hemodynamic effects. The presence of GHS-R 1a mRNA has been demonstrated in heart and aorta (22, 38), and specific binding sites for ghrelin have been recently identified in rat heart and human arteries, where the density of ghrelin receptors is up-regulated with atherosclerosis (405). Considerable specific binding of radiolabeled peptidyl GHS (such as [¹²⁵I]Tyr-Ala-hexarelin and [¹²⁵I]Tyr-benzoylphenylalanine-hexarelin) is easily detectable in rat myocardium (107, 167) and in different human cardiovascular tissues (ventricles, atria, aorta, coronaries, carotid, endocardium, and vena cava), in quantities often higher than those found in the pituitary gland (24, 26). This binding is inhibited by unlabeled Tyr-Ala-hexarelin, hexarelin, and other peptidyl GHS, but not by the nonpeptidyl GHS MK-0677 or even by ghrelin, as well as by classical cardioactive substances (26). Therefore, these binding sites are unlikely to be classical GHS-Rs because they do not bind ghrelin (see Section III. A).

In agreement with the presence of GHS-Rs (both ghrelin and nonghrelin receptors) in the cardiovascular system, there is already evidence that ghrelin and (or) GHS mediate GH-independent cardiovascular activities, both in animals and in humans.

Although administration of high pharmacological doses of peptidyl GHS is reported to induce clear but transient coronary vasoconstriction in the perfused rat heart (49, 167), in young rats with selective GHD induced by passive immunization against GHRH, hexarelin pretreatment is able to protect against myocardial ischemic damage induced by low-flow ischemia and reperfusion (406, 407). Such a protective activity was associated with a recovery of prostacyclin release and a normalization of the vasopressor activity of angiotensin II (406, 407). GHD induces a clear exacerbation of ischemic tissue damage during low-flow ischemia and reperfusion in rats. This worsening could be, at least partially, due to the reduced release of prostacyclin during the preischemic phase (particularly during reperfusion) and to the enhanced responsivity of coronary smooth muscles to angiotensin II, which increases the coronary artery resistance during reperfusion (406, 407).

Similar results were observed in aged rats in which hexarelin pretreatment achieved a strong protection against myocardial stunning (408). Complete recovery of the cardiac function was present on reperfusion, and the simultaneous reduction of creatine-kinase levels testifies to the integrity of myocardial cell membranes and the preservation from the contractile impairment that follows oxygen readmission (408).

Evidence that GHS activities are GH-independent and mediated by direct activation of specific myocardial receptors (24, 167, 408) came from a study showing cardioprotective effects in hypophysectomized rats (409). Moreover, in an isolated blood-perfused rabbit heart model of stunning, in which brief ischemia- and reperfusion-induced functional impairment without detectable necrosis or apoptosis, 14-d pretreatment with GHRP-2, but not with recombinant human GH, has been reported to selectively protect against the

diastolic component of the postischemia-reperfusion myocardial dysfunction (410). Such an improvement in diastolic stiffness was independent of coronary blood flow and of serum GH and IGF-I levels.

Hexarelin increases stroke volume and cardiac output and decreases total peripheral resistance in a rat model 4 wk after experimental myocardial infarction induced by ligation of the left coronary artery (411). A positive effect of GHS on cardiac contractility was also seen in an isoproterenol-induced rapid-pacing porcine model of heart failure in which 3-wk treatment with CP-424,391, an orally active GHS, improved left ventricular fractional shortening (412). Although the mechanisms underlying the inotropic activity of synthetic GHS are still unclear, there is evidence that they increase papillary muscle contractility via actions on endothelial cells and/or nerve endings (413).

It has to be noticed that ghrelin does not share all the cardiovascular actions of synthetic GHS. Ghrelin negligibly protects the heart from ischemia in rats (414), suggesting that the effects of synthetic GHS occur via binding and activation of binding sites specific for peptidyl GHS (25, 26). The inactivity of ghrelin agrees with the existence of a receptor specific for peptidyl GHS only (25, 26, 49, 167, 415). This receptor has a molecular mass that is higher (84 kDa) than that of GHS-R 1a and shows no homology with this receptor; its predicted amino acid sequence is similar to CD36, a multifunctional receptor also known as glycoprotein IV, which would therefore mediate the coronaric actions of peptidyl GHS (49).

Although probably inactive at the coronary level, ghrelin possesses other cardiovascular activities. Chronic administration of ghrelin is able to improve cardiac contractility in GHD rats and even in rats with chronic heart failure (416) in which it also attenuates the development of left ventricular remodeling and cardiac cachexia. Moreover, both in chronic heart failure and in hypophysectomized rats, prolonged administration of ghrelin is associated with a reduction of systemic vascular resistance, probably reflecting a decrease of the afterload, more than a direct myocardial effect (416).

Interestingly, hexarelin, acylated ghrelin, and even nonacylated ghrelin are able to prevent cell death of cultured H9c2 cardiomyocytes and endothelial cells, induced by doxorubicin, serum withdrawal, or activation by FAS-ligand (170, 171). These molecules probably stimulate intracellular signaling pathways involved in the process of survival in cultured cardiomyocytes, including tyrosine phosphorylation of intracellular proteins and activation of extracellular-signal-regulated kinase-1 and -2 and protein kinase B/AKT (170). Because nonacylated ghrelin is unable to activate the GHS-R 1a (17), these data further indicate existence of another cardiac GHS-R subtype. These data also indicate that nonacylated ghrelin has at least some biological activities (8).

Studies in healthy volunteers indicated that synthetic GHS administration induces a prompt increase in left ventricular ejection fraction (417). The same effects have been demonstrated in hypopituitary adult patients with severe GHD (417, 418). As in normal subjects and in GHD patients, the synthetic GHS-induced increase in left ventricular ejection fraction occurred without variations in left ventricular end diastolic volume, mean blood pressure, or heart rate, even in

patients with postischemic dilated cardiomyopathy (417–421). More recently, in patients with coronary artery disease undergoing bypass surgery, acute administration of hexarelin increased left ventricular ejection fraction, cardiac index, and cardiac output (422). Like in animals, the mechanisms responsible for these inotropic activities of synthetic GHS are unclear.

In humans, ghrelin and GHS possess cardiovascular activities. In fact, its administration in normal subjects and even in patients with chronic heart failure significantly decreases systemic vascular resistance and increases cardiac index and stroke volume index (38, 423). This is accompanied by a concomitant reduction in mean arterial pressure, but not by any change in heart rate, mean pulmonary arterial pressure, or pulmonary capillary wedge pressure. Despite its hypotensive effect, which is independent of the GH-IGF-I and nitric oxide system (50), ghrelin slightly increased epinephrine but not norepinephrine levels (38, 164). The pathophysiological significance of these phenomena is presently unknown.

3. Modulation of proliferation of neoplastic cells. Specific binding sites for peptidyl and nonpeptidyl GHS are present in normal and neoplastic human thyroid tissue. Binding sites for GHS have been demonstrated in all follicular and most parafollicular thyroid carcinomas, as well as in different human thyroid tumor cell lines (follicular, papillary, and anaplastic carcinoma cell lines). Moreover, medullary, but not follicular, thyroid carcinomas and carcinoma cell lines remarkably express ghrelin. Ghrelin and peptidyl and nonpeptidyl GHS inhibit [³H]thymidine incorporation and cell proliferation in all thyroid tumor cell lines, already within 24 h (129, 424, 425). Interestingly, the same actions are shared by nonacylated ghrelin that are also particularly accumulated in human medullary thyroid carcinomas (129).

GHS-Rs are found in tumoral tissues from organs that do not express these receptors in physiological conditions, such as mammary gland tissue (27). The presence of specific GHS-Rs was shown in breast cancer, but not in fibroadenomas or normal mammary parenchyma. In breast tumors, the highest binding activity is present in well-differentiated invasive breast carcinomas and is progressively reduced in moderately to poorly differentiated tumors. GHS-Rs are also present in both estrogen-dependent (MCF7, T47D) and estrogen-independent (MDA-MB231) breast cancer cell lines, in which ghrelin and synthetic GHS cause inhibition of cell proliferation. Like in the cardiovascular system and in thyroid carcinomas, the same effect of acylated ghrelin is shared by the nonacylated molecules, again indicating that nonacylated ghrelin is a biologically active peptide possessing at least antiproliferative actions (27). Because nonacylated ghrelin is generally unable to bind the GHS-R 1a, these data indicate the possibility that the antiproliferative effects of acylated and nonacylated ghrelin on breast and thyroid cancer cells are mediated via a GHS-R subtype that is different from the GHS-R 1a (21).

Other data indicate that neuroendocrine carcinoid tumors (26, 121, 128, 163, 166, 169, 426) and even adenocarcinomas of the lung express specific GHS binding sites (426). These sites are also present in the human lung cancer cell line

CALU-1, of which the proliferation is inhibited by synthetic peptidyl GHS and analogs such as the EP-80317, but not by ghrelin (426).

The GHS-R 1a and 1b, as well as ghrelin, are also expressed in all prostate cancer cell lines. The PC-3 prostate cancer cell line, however, showed increased cell proliferation *in vitro* after exposure to ghrelin, suggesting that autocrine-paracrine pathways involving ghrelin might be capable of stimulating cell proliferation (46). Indeed, ghrelin-induced cell proliferation was also found in a hepatoma cell line, the H9c2 cardiomyocyte cell line, and rat adrenal cortex (401, 427, 428). Despite the potential proliferative effect on some neoplastic cell types, ghrelin is currently investigated as an anticachectic agent in tumor-bearing animal models, where it seems to exert anabolic actions (429, 430).

VI. Ghrelin as an Important Member of the Survival Kit of Nature

Ghrelin biology is very well preserved, possibly indicating an important role for this peptide hormone, which was discovered no more than 4 yr ago. Apart from humans, rats, and mice, ghrelin expression and/or its biological actions have been demonstrated in many species (43, 54, 135, 244, 324, 431–438).

If ghrelin plays an important biological role in each of these species, what is this role? Although new aspects of this fascinating hormone are discovered nearly on a daily basis, it seems to be reasonable that ghrelin represents a crucial endocrine link connecting physiological processes regulating nutrition, body composition, and growth (51). Based on current knowledge, we speculate that ghrelin ensures that sufficient amounts of energy are available for GH to stimulate growth and repair (439). Assuming the induction of a positive energy balance to be one of ghrelin's most powerful physiological functions, from a teleological point of view, it appears that ghrelin signals the brain when energy must be consumed or stored (51). The observed physiological actions of ghrelin appear to be in accordance with this hypothesis: ghrelin increases food intake (33), decreases fat oxidation (33), and suppresses body core temperature (440).

This function, which may have been developed by evolutionary selection processes for survival in times of reduced caloric supply, now still promotes a positive energy balance, although obesity, and not starvation-induced cachexia, is today's predominant nutrition-related disorder in industrialized countries (441). Recent linkage studies have shown that rare polymorphisms of the preproghrelin gene might protect against obesity-related symptoms (442), possibly indicating that a signaling mechanism once developed to prolong life now may have turned into a health hazard in the presence of changed environmental conditions such as a palatable high-caloric food supply and an increasingly sedentary lifestyle (443).

Several recent studies show that circulating ghrelin peptide levels are decreased in obese individuals (202, 219, 444, 445) as well as postprandially (242), whereas ghrelin levels are increased under cachectic and anorectic conditions (245, 416, 446, 447), as well as during food deprivation (33, 243,

245) or preprandially (209). This negative association between ghrelin concentrations and acute feeding on one hand and chronic positive energy balance on the other is interpreted by many as an adaptive physiological response (51), which, at least in the case of obesity, fails to reestablish an appropriate energy balance (242). That further reduction of the already low plasma ghrelin concentrations in obese individuals could possibly still trigger the reduction of body fat mass, or at least prevent recidivism to obesity after diet-induced weight loss, has recently been shown by Cummings *et al.* (202). After gastric bypass surgery, obese patients exhibited a more impressive weight loss than can generally be achieved by voluntary caloric restriction. Cummings *et al.* (202) found that gastric bypass surgery is associated with low circulating ghrelin concentrations close to the detection limit, whereas weight loss induced by voluntary caloric restriction is coupled to elevated circulating ghrelin concentrations, most likely triggering increased hunger and decreased fat oxidation. Although the hypothesis that these adaptive ghrelin responses to caloric restriction may contribute to the obesity epidemic via increased recidivism is intriguing, only the availability of a potent ghrelin antagonist will make it possible to test whether a pharmacological simulation of gastric bypass surgery could represent an effective treatment option for obesity.

A single exception to the general observation of adaptive changes in ghrelin secretion in response to acute or chronic changes in energy stores is adding further evidence to solidify the theory that ghrelin is a clinically relevant stimulator of hunger and adiposity. Patients with PWS not only suffer from uncontrollable hunger, increased fat mass, and physical hypoactivity, but also have severalfold increased plasma ghrelin levels, when compared with body mass index of matched healthy controls (402, 448, 449). All other known obese states are associated with low plasma ghrelin levels, including monogenic causes of obesity (360). Although the genetic etiology of PWS does not offer a pathogenetic role for ghrelin, indirect mechanisms such as chronic hypoinsulinemia or GHD could be responsible for hyperghrelinemia and its respective consequences (449). Again, only an effective ghrelin antagonist will allow for testing this hypothesis and will possibly represent a much-needed therapeutic option for these patients.

The mechanisms behind adaptive adjustment of ghrelin secretion to stored fat mass clearly require adipocyte-derived signals to communicate the level of stored fat to ghrelin-secreting A cells in the gastrointestinal tract. Recent studies in leptin receptor mutant Zucker rats, leptin receptor-deficient db/db mice, and leptin-deficient ob/ob mice suggest that leptin might not be that signal, because ghrelin levels in these obese rats are low compared with lean matched controls, indicating that the activation of the leptin receptor at the levels of the ghrelin-secreting cell is not the crucial signal and that other adipokines could be responsible for decreased ghrelin levels in obesity (246). Although it has been established quite well that circulating ghrelin concentrations under several conditions presenting with low body fat mass, as for example in cancer cachexia (447), anorexia nervosa (446), or cardiac cachexia (416), are significantly elevated, the existence of a putative ghrelin resistance syndrome under these

conditions has not yet been established. It seems possible, however, that a decreased ghrelin responsiveness to constant exposure of ghrelin may be realized similar to leptin resistance syndrome postulated in hyperleptinemic obese patients (450). If this scenario can be proven, it might be difficult to establish ghrelin or one of its receptor agonists as a treatment for anorexia or cachexia, although high doses might still show a favorable effect. A comparable situation occurs in type 2 diabetes, in which insulin treatment can still be useful although insulin levels are already increased in response to insulin resistance (451).

In summary, ghrelin as part of the survival kit of nature might be responsible for synchronizing growth regulation with energy balance to make certain that energy is available for GH actions during growth and repair. Under today's highly palatable and abundant diet environmental conditions, however, the orexigenic and adipogenic drive of ghrelin may be turning this hormone into a health hazard (452).

VII. Pharmacological and Clinical Perspectives

Because GH is a large protein that must be administered by injection or inhalation, ghrelin agonists (and/or GHS) have offered promise for a more convenient and socially acceptable oral delivery of an agent that stimulates endogenous GH. Indeed, it was that potential that drove Merck & Co. to lead a search for an orally available GHS (453). Others realized enormous potential for the much more potent GHRPs, such as GHRP-2 (454) and hexarelin (20), despite their relatively poor bioavailability (455). General clinical utility for these ghrelin mimics as GH therapeutics was reviewed by many (20, 453, 456–458). These discussions focused on uses in pediatrics (459) and geriatrics (72, 318, 460, 461) and on uses to combat the catabolism accompanying critical illness (462). Clinical investigators have also exploited the ability of ghrelin agonists to release GH by mechanisms distinct from GHRH as a diagnostic tool (463–466). Interestingly, the GHRPs (49, 420, 422, 467) and perhaps ghrelin (50) may be used to treat heart failure and hypertension. Such indications have not been made for the nonpeptide agonists of ghrelin, which may be a result of their lower affinity for the GHS-R 1a or because the peptides bind to a yet unidentified receptor. Ghrelin receptors were recently identified in human cancer (27, 424), ghrelin agonists may have antiproliferative actions (426), and in some cancers ghrelin antagonists may be indicated.

Until ghrelin was exposed as a hormone that stimulates appetite in rodents and humans, there was no demanding but unmet clinical need for a ghrelin antagonist. Although such a molecule may be expected to reduce GH levels and thus could be indicated for the treatment of acromegaly, other effective agents are available. The new possibility of using a ghrelin antagonist for the treatment of obesity initiated a scramble by many groups to hunt for such a valuable agent. All groups that had efforts to discover and study GHS have the tools and likely lead molecules to begin this pursuit. Thus, it will not be long before antagonists are disclosed and tested for the treatment of obesity. It is conceivable that initial trials may include obese PWS patients (402).

Acknowledgments

Address all correspondence and requests for reprints to: Aart Jan van der Lely, M.D., Department of Internal Medicine, Erasmus Medical Center, 40 Dr. Molewaterplein, 3015 GD Rotterdam, The Netherlands. E-mail: a.vanderlelij@erasmusmc.nl

References

- Kojima M, Hosoda H, Date Y, Nakazato M, Matsuo H, Kangawa K 1999 Ghrelin is a growth-hormone-releasing acylated peptide from stomach. *Nature* 402:656–660
- Tena-Sempere M, Barreiro ML, Gonzalez LC, Gaytan F, Zhang FP, Caminos JE, Pinilla L, Casanueva FF, Dieguez C, Aguilar E 2002 Novel expression and functional role of ghrelin in rat testis. *Endocrinology* 143:717–725
- Date Y, Kojima M, Hosoda H, Sawaguchi A, Mondal MS, Suganuma T, Matsukura S, Kangawa K, Nakazato M 2000 Ghrelin, a novel growth hormone-releasing acylated peptide, is synthesized in a distinct endocrine cell type in the gastrointestinal tracts of rats and humans. *Endocrinology* 141:4255–4261
- Mori K, Yoshimoto A, Takaya K, Hosoda K, Ariyasu H, Yahata K, Mukoyama M, Sugawara A, Hosoda H, Kojima M, Kangawa K, Nakao K 2000 Kidney produces a novel acylated peptide, ghrelin. *FEBS Lett* 486:213–216
- Gualillo O, Caminos J, Blanco M, Garcia-Caballero T, Kojima M, Kangawa K, Dieguez C, Casanueva F 2001 Ghrelin, a novel placental-derived hormone. *Endocrinology* 142:788–794
- Korbonits M, Kojima M, Kangawa K, Grossman AB 2001 Presence of ghrelin in normal and adenomatous human pituitary. *Endocrine* 14:101–104
- Volante M, Papotti M, Gugliotta P, Migheli A, Bussolati G 2001 Extensive DNA fragmentation in oxyphilic cell lesions of the thyroid. *J Histochem Cytochem* 49:1003–1011
- Muccioli G, Tschop M, Papotti M, Deghenghi R, Heiman M, Ghigo E 2002 Neuroendocrine and peripheral activities of ghrelin: implications in metabolism and obesity. *Eur J Pharmacol* 440:235–254
- Hattori N, Saito T, Yagyu T, Jiang BH, Kitagawa K, Inagaki C 2001 GH, GH receptor, GH secretagogue receptor, and ghrelin expression in human T cells, B cells, and neutrophils. *J Clin Endocrinol Metab* 86:4284–4291
- Tanaka M, Hayashida Y, Nakao N, Nakai N, Nakashima K 2001 Testis-specific and developmentally induced expression of a ghrelin gene-derived transcript that encodes a novel polypeptide in the mouse. *Biochim Biophys Acta* 1522:62–65
- Chapman IM, Hartman ML, Pezzoli SS, Thorner MO 1996 Enhancement of pulsatile growth hormone secretion by continuous infusion of a growth hormone-releasing peptide mimetic, L-692,429, in older adults—a clinical research center study. *J Clin Endocrinol Metab* 81:2874–2880
- Volante M, Fulcheri E, Allia E, Cerrato M, Pucci A, Papotti M 2002 Ghrelin expression in fetal, infant, and adult human lung. *J Histochem Cytochem* 50:1013–1021
- Howard AD, Feighner SD, Cully DF, Arena JP, Liberatore PA, Rosenblum CI, Hamelin M, Hreniuk DL, Palyha OC, Anderson J, Paress PS, Diaz C, Chou M, Liu KK, McKee KK, Pong SS, Chung LY, Elbrecht A, Dashkevich M, Heavens R, Rigby M, Sirinathsingji DJ, Dean DC, Melillo DG, Van der Ploeg LH 1996 A receptor in pituitary and hypothalamus that functions in growth hormone release. *Science* 273:974–977
- Smith RG, Van der Ploeg LH, Howard AD, Feighner SD, Cheng K, Hickey GJ, Wyratt Jr MJ, Fisher MH, Nargund RP, Patchett AA 1997 Peptidomimetic regulation of growth hormone secretion. *Endocr Rev* 18:621–645
- Arvat E, Di Vito L, Broglio F, Papotti M, Muccioli G, Dieguez C, Casanueva FF, Deghenghi R, Camanni F, Ghigo E 2000 Preliminary evidence that ghrelin, the natural GH secretagogue (GHS)-receptor ligand, strongly stimulates GH secretion in humans. *J Endocrinol Invest* 23:493–495
- Arvat E, Maccario M, Di Vito L, Broglio F, Benso A, Gottero C, Papotti M, Muccioli G, Dieguez C, Casanueva FF, Deghenghi R, Camanni F, Ghigo E 2001 Endocrine activities of ghrelin, a natural growth hormone secretagogue (GHS), in humans: comparison and interactions with hexarelin, a nonnatural peptidyl GHS, and GH-releasing hormone. *J Clin Endocrinol Metab* 86:1169–1174
- Bednarek MA, Feighner SD, Pong SS, McKee KK, Hreniuk DL, Silva MV, Warren VA, Howard AD, Van der Ploeg LH, Heck JV 2000 Structure-function studies on the new growth hormone-releasing peptide, ghrelin: minimal sequence of ghrelin necessary for activation of growth hormone secretagogue receptor 1a. *J Med Chem* 43:4370–4376
- Takaya K, Ariyasu H, Kanamoto N, Iwakura H, Yoshimoto A, Harada M, Mori K, Komatsu Y, Usui T, Shimatsu A, Ogawa Y, Hosoda K, Akamizu T, Kojima M, Kangawa K, Nakao K 2000 Ghrelin strongly stimulates growth hormone release in humans. *J Clin Endocrinol Metab* 85:4908–4911
- Deghenghi R, Papotti M, Ghigo E, Muccioli G 2001 Cortistatin, but not somatostatin, binds to growth hormone secretagogue (GHS) receptors of human pituitary gland. *J Endocrinol Invest* 24:RC1–RC3
- Ghigo E, Arvat E, Giordano R, Broglio F, Gianotti L, Maccario M, Bisi G, Graziani A, Papotti M, Muccioli G, Deghenghi R, Camanni F 2001 Biologic activities of growth hormone secretagogues in humans. *Endocrine* 14:87–93
- Muccioli G, Papotti M, Locatelli V, Ghigo E, Deghenghi R 2001 Binding of 125I-labeled ghrelin to membranes from human hypothalamus and pituitary gland. *J Endocrinol Invest* 24:RC7–RC9
- Gnanapavan S, Kola B, Bustin SA, Morris DG, McGee P, Fairclough P, Bhattacharya S, Carpenter R, Grossman AB, Korbonits M 2002 The tissue distribution of the mRNA of ghrelin and subtypes of its receptor, GHS-R, in humans. *J Clin Endocrinol Metab* 87:2988
- Katagampola SD, Maguire JJ, Kuc RE, Wiley KE, Davenport AP 2002 Discovery of recently adopted orphan receptors for apelin, urotensin II, and ghrelin identified using novel radioligands and functional role in the human cardiovascular system. *Can J Physiol Pharmacol* 80:369–374
- Muccioli G, Ghe C, Ghigo MC, Papotti M, Arvat E, Boghen MF, Nilsson MH, Deghenghi R, Ong H, Ghigo E 1998 Specific receptors for synthetic GH secretagogues in the human brain and pituitary gland. *J Endocrinol* 157:99–106
- Muccioli G, Broglio F, Valetto MR, Ghe C, Catapano F, Graziani A, Papotti M, Bisi G, Deghenghi R, Ghigo E 2000 Growth hormone-releasing peptides and the cardiovascular system. *Ann Endocrinol (Paris)* 61:27–31
- Papotti M, Ghe C, Cassoni P, Catapano F, Deghenghi R, Ghigo E, Muccioli G 2000 Growth hormone secretagogue binding sites in peripheral human tissues. *J Clin Endocrinol Metab* 85:3803–3807
- Cassoni P, Papotti M, Ghe C, Catapano F, Sapino A, Graziani A, Deghenghi R, Reissmann T, Ghigo E, Muccioli G 2001 Identification, characterization, and biological activity of specific receptors for natural (ghrelin) and synthetic growth hormone secretagogues and analogs in human breast carcinomas and cell lines. *J Clin Endocrinol Metab* 86:1738–1745
- Veeraragavan K, Sethumadhavan K, Bowers CY 1992 Growth hormone-releasing peptide (GHRP) binding to porcine anterior pituitary and hypothalamic membranes. *Life Sci* 50:1149–1155
- Pong SS, Chung LY, Dean DC, Nargund RP, Patchett AA, Smith RG 1996 Identification of a new G-protein-linked receptor for growth hormone secretagogues. *Mol Endocrinol* 10:57–61
- Guan XM, Yu H, Palyha OC, McKee KK, Feighner SD, Sirinathsingji DJ, Smith RG, Van der Ploeg LH, Howard AD 1997 Distribution of mRNA encoding the growth hormone secretagogue receptor in brain and peripheral tissues. *Brain Res Mol Brain Res* 48:23–29
- Kamegai J, Tamura H, Shimizu T, Ishii S, Sugihara H, Wakabayashi I 2000 Central effect of ghrelin, an endogenous growth hormone secretagogue, on hypothalamic peptide gene expression. *Endocrinology* 141:4797–4800
- Masuda Y, Tanaka T, Inomata N, Ohnuma N, Tanaka S, Itoh Z, Hosoda H, Kojima M, Kangawa K 2000 Ghrelin stimulates gastric acid secretion and motility in rats. *Biochem Biophys Res Commun* 276:905–908

33. **Tschop M, Smiley DL, Heiman ML** 2000 Ghrelin induces adiposity in rodents. *Nature* 407:908–913
34. **Wren AM, Small CJ, Ward HL, Murphy KG, Dakin CL, Taheri S, Kennedy AR, Roberts GH, Morgan DG, Ghatei MA, Bloom SR** 2000 The novel hypothalamic peptide ghrelin stimulates food intake and growth hormone secretion. *Endocrinology* 141:4325–4328
35. **Broglio F, Arvat E, Benso A, Gottero C, Muccioli G, Papotti M, Van Der Lely AJ, Deghenghi R, Ghigo E** 2001 Ghrelin, a natural GH secretagogue produced by the stomach, induces hyperglycemia and reduces insulin secretion in humans. *J Clin Endocrinol Metab* 86:5083–5086
36. **Date Y, Nakazato M, Murakami N, Kojima M, Kangawa K, Matsukura S** 2001 Ghrelin acts in the central nervous system to stimulate gastric acid secretion. *Biochem Biophys Res Commun* 280:904–907
37. **Kamegai J, Tamura H, Shimizu T, Ishii S, Sugihara H, Wakabayashi I** 2001 Chronic central infusion of ghrelin increases hypothalamic neuropeptide Y and Agouti-related protein mRNA levels and body weight in rats. *Diabetes* 50:2438–2443
38. **Nagaya N, Kojima M, Uematsu M, Yamagishi M, Hosoda H, Oya H, Hayashi Y, Kangawa K** 2001 Hemodynamic and hormonal effects of human ghrelin in healthy volunteers. *Am J Physiol Regul Integr Comp Physiol* 280:R1483–R1487
39. **Nakazato M, Murakami N, Date Y, Kojima M, Matsuo H, Kangawa K, Matsukura S** 2001 A role for ghrelin in the central regulation of feeding. *Nature* 409:194–198
40. **Wren AM, Seal LJ, Cohen MA, Brynes AE, Frost GS, Murphy KG, Dhillon WS, Ghatei MA, Bloom SR** 2001 Ghrelin enhances appetite and increases food intake in humans. *J Clin Endocrinol Metab* 86:5992
41. **Egido EM, Rodriguez-Gallardo J, Silvestre RA, Marco J** 2002 Inhibitory effect of ghrelin on insulin and pancreatic somatostatin secretion. *Eur J Endocrinol* 146:241–244
42. **Zhang W, Chen M, Chen X, Segura BJ, Mulholland MW** 2001 Inhibition of pancreatic protein secretion by ghrelin in the rat. *J Physiol* 537:231–236
43. **Nieminen P, Mustonen AM, Asikainen J, Hyvarinen H** 2002 Seasonal weight regulation of the raccoon dog (*Nyctereutes procyonoides*): interactions between melatonin, leptin, ghrelin, and growth hormone. *J Biol Rhythms* 17:155–163
44. **Tolle V, Bassant MH, Zizzari P, Poindessous-Jazat F, Tomasetto C, Epelbaum J, Bluet-Pajot MT** 2002 Ultradian rhythmicity of ghrelin secretion in relation with GH, feeding behavior, and sleep-wake patterns in rats. *Endocrinology* 143:1353–1361
45. **Asakawa A, Inui A, Kaga T, Yuzuriha H, Nagata T, Fujimiya M, Katsuura G, Makino S, Fujino MA, Kasuga M** 2001 A role of ghrelin in neuroendocrine and behavioral responses to stress in mice. *Neuroendocrinology* 74:143–147
46. **Jeffery PL, Herington AC, Chopin LK** 2002 Expression and action of the growth hormone releasing peptide ghrelin and its receptor in prostate cancer cell lines. *J Endocrinol* 172:R7–R11
47. **Bennett PA, Thomas GB, Howard AD, Feighner SD, Van der Ploeg LH, Smith RG, Robinson IC** 1997 Hypothalamic growth hormone secretagogue-receptor (GHS-R) expression is regulated by growth hormone in the rat. *Endocrinology* 138:4552–4557
48. **Casanueva FF, Dieguez C** 1999 Growth hormone secretagogues: physiological role and clinical utility. *Trends Endocrinol Metab* 10:30–38
49. **Bodart V, Febbraio M, Demers A, McNicoll N, Pohankova P, Perreault A, Sejlitz T, Escher E, Silverstein RL, Lamontagne D, Ong H** 2002 CD36 mediates the cardiovascular action of growth hormone-releasing peptides in the heart. *Circ Res* 90:844–849
50. **Okumura H, Nagaya N, Enomoto M, Nakagawa E, Oya H, Kangawa K** 2002 Vasodilatory effect of ghrelin, an endogenous peptide from the stomach. *J Cardiovasc Pharmacol* 39:779–783
51. **Horvath TL, Diano S, Sotonyi P, Heiman M, Tschop M** 2001 Minireview: ghrelin and the regulation of energy balance—a hypothalamic perspective. *Endocrinology* 142:4163–4169
52. **Inui A** 2001 Ghrelin: an orexigenic and somatotrophic signal from the stomach. *Nat Rev Neurosci* 2:551–560
53. **Furuta M, Funabashi T, Kimura F** 2001 Intracerebroventricular administration of ghrelin rapidly suppresses pulsatile luteinizing hormone secretion in ovariectomized rats. *Biochem Biophys Res Commun* 288:780–785
54. **Furuse M, Tachibana T, Ohgushi A, Ando R, Yoshimatsu T, Denbow DM** 2001 Intracerebroventricular injection of ghrelin and growth hormone releasing factor inhibits food intake in neonatal chicks. *Neurosci Lett* 301:123–126
55. **Frohman LA, Kineman RD, Kamegai J, Park S, Teixeira LT, Coschigano KT, Kopchik JJ** 2000 Secretagogues and the somatotrope: signaling and proliferation. *Recent Prog Horm Res* 55:269–290; discussion 290–291
56. **Yoshihara F, Kojima M, Hosoda H, Nakazato M, Kangawa K** 2002 Ghrelin: a novel peptide for growth hormone release and feeding regulation. *Curr Opin Clin Nutr Metab Care* 5:391–395
57. **Caminos JE, Tena-Sempere M, Gaytan F, Sanchez-Criado JE, Barreiro ML, Nogueiras R, Casanueva FF, Aguilar E, Dieguez C** 2003 Expression of ghrelin in the cyclic and pregnant rat ovary. *Endocrinology* 144:1594–1602
58. **Gaytan F, Barreiro ML, Chopin LK, Herington AC, Morales C, Pinilla L, Casanueva FF, Aguilar E, Dieguez C, Tena-Sempere M** 2003 Immunolocalization of ghrelin and its functional receptor, the type 1a growth hormone secretagogue receptor, in the cyclic human ovary. *J Clin Endocrinol Metab* 88:879–887
59. **Momany FA, Bowers CY, Reynolds GA, Chang D, Hong A, Newlander K** 1981 Design, synthesis, and biological activity of peptides which release growth hormone *in vitro*. *Endocrinology* 108:31–39
60. **Momany FA, Bowers CY, Reynolds GA, Hong A, Newlander K** 1984 Conformational energy studies and *in vitro* and *in vivo* activity data on growth hormone-releasing peptides. *Endocrinology* 114:1531–1536
61. **Sartor O, Bowers CY, Reynolds GA, Momany FA** 1985 Variables determining the growth hormone response of His-D-Trp-Ala-Trp-D-Phe-Lys-NH₂ in the rat. *Endocrinology* 117:1441–1447
62. **Sartor O, Bowers CY, Chang D** 1985 Parallel studies of His-D-Trp-Ala-Trp-D-Phe-Lys-NH₂ and human pancreatic growth hormone-releasing factor-44-NH₂ in rat primary pituitary cell monolayer culture. *Endocrinology* 116:952–957
63. **Bowers CY, Reynolds GA, Durham D, Barrera CM, Pezzoli SS, Thorner MO** 1990 Growth hormone (GH)-releasing peptide stimulates GH release in normal men and acts synergistically with GH-releasing hormone. *J Clin Endocrinol Metab* 70:975–982
64. **Thorner MO, Vance ML, Rogol AD, Blizzard RM, Veldhuis JD, Cauter EV, Copinschi G, Bowers CY** 1990 Growth hormone-releasing hormone and growth hormone-releasing peptide as potential therapeutic modalities. *Acta Paediatr Scand Suppl* 367:29–32
65. **Bowers CY, Sartor AO, Reynolds GA, Badger TM** 1991 On the actions of the growth hormone-releasing hexapeptide, GHRP. *Endocrinology* 128:2027–2035
66. **Sethumadhavan K, Veeraragavan K, Bowers CY** 1991 Demonstration and characterization of the specific binding of growth hormone-releasing peptide to rat anterior pituitary and hypothalamic membranes. *Biochem Biophys Res Commun* 178:31–37
67. **Robinson BM, Friberg RD, Bowers CY, Barkan AL** 1992 Acute growth hormone (GH) response to GH-releasing hexapeptide in humans is independent of endogenous GH-releasing hormone. *J Clin Endocrinol Metab* 75:1121–1124
68. **Bowers CY** 1993 GH releasing peptides—structure and kinetics. *J Pediatr Endocrinol* 6:21–31
69. **Bowers CY** 1994 On a peptidomimetic growth hormone-releasing peptide. *J Clin Endocrinol Metab* 79:940–942
70. **Bowers CY** 2001 Unnatural growth hormone-releasing peptide begets natural ghrelin. *J Clin Endocrinol Metab* 86:1464–1469
71. **Tannenbaum GS, Bowers CY** 2001 Interactions of growth hormone secretagogues and growth hormone-releasing hormone/somatostatin. *Endocrine* 14:21–27
72. **Veldhuis JD, Evans WS, Bowers CY, Anderson S** 2001 Interactive regulation of postmenopausal growth hormone insulin-like growth factor axis by estrogen and growth hormone-releasing peptide-2. *Endocrine* 14:45–62
73. **Bowers CY** 1998 Growth hormone-releasing peptide (GHRP). *Cell Mol Life Sci* 54:1316–1329
74. **Camanni F, Ghigo E, Arvat E** 1998 Growth hormone-releasing peptides and their analogs. *Front Neuroendocrinol* 19:47–72
75. **Pan LC, Carpino PA, Lefker BA, Ragan JA, Toler SM, Pettersen**

- JC, Nettleton DO, Ng O, Pirie CM, Chidsey-Frink K, Lu B, Nickerson DF, Tess DA, Mullins MA, MacLean DB, DaSilva-Jardine PA, Thompson DD 2001 Preclinical pharmacology of CP-424,391, an orally active pyrazolinone-piperidine growth hormone secretagogue. *Endocrine* 14:121–132
76. Raun K, Hansen BS, Johansen NL, Thogersen H, Madsen K, Ankersen M, Andersen PH 1998 Ipamorelin, the first selective growth hormone secretagogue. *Eur J Endocrinol* 139:552–561
 77. DeVita RJ, Bochis R, Frontier AJ, Kotliar A, Fisher MH, Schoen WR, Wyvratt MJ, Cheng K, Chan WW, Butler B, Jacks TM, Hickey GJ, Schleim KD, Leung K, Chen Z, Chiu SL, Feeney WP, Cunningham PK, Smith RG 1998 A potent, orally bioavailable benzazepinone growth hormone secretagogue. *J Med Chem* 41:1716–1728
 78. Chang CH, Rickes EL, Marsilio F, McGuire L, Cosgrove S, Taylor J, Chen H, Feighner S, Clark JN, De Vita R 1995 Activity of a novel nonpeptidyl growth hormone secretagogue, L-700,653, in swine. *Endocrinology* 136:1065–1071
 79. Elias KA, Ingle GS, Burnier JP, Hammonds RG, McDowell RS, Rawson TE, Somers TC, Stanley MS, Cronin MJ 1995 *In vitro* characterization of four novel classes of growth hormone-releasing peptide. *Endocrinology* 136:5694–5699
 80. McDowell RS, Elias KA, Stanley MS, Burdick DJ, Burnier JP, Chan KS, Fairbrother WJ, Hammonds RG, Ingle GS, Jacobsen NE 1995 Growth hormone secretagogues: characterization, efficacy, and minimal bioactive conformation. *Proc Natl Acad Sci USA* 92:11165–11169
 81. Deghenghi R, Boutignon F, Luoni M, Grilli R, Guidi M, Locatelli V 1995 Small peptides as potent releasers of growth hormone. *J Pediatr Endocrinol Metab* 8:311–313
 82. Hansen TK, Ankersen M, Raun K, Hansen BS 2001 Highly potent growth hormone secretagogues: hybrids of NN703 and ipamorelin. *Bioorg Med Chem Lett* 11:1915–1918
 83. Bowers CY, Alster DK, Frentz JM 1992 The growth hormone-releasing activity of a synthetic hexapeptide in normal men and short statured children after oral administration. *J Clin Endocrinol Metab* 74:292–298
 84. Patchett AA, Nargund RP, Tata JR, Chen MH, Barakat KJ, Johnston DB, Cheng K, Chan WW, Butler B, Hickey G 1995 Design and biological activities of L-163,191 (MK-0677): a potent, orally active growth hormone secretagogue. *Proc Natl Acad Sci USA* 92:7001–7005
 85. Chapman IM, Bach MA, Van Cauter E, Farmer M, Krupa D, Taylor AM, Schilling LM, Cole KY, Skiles EH, Pezzoli SS, Hartman ML, Veldhuis JD, Gormley GJ, Thorner MO 1996 Stimulation of the growth hormone (GH)-insulin-like growth factor I axis by daily oral administration of a GH secretagogue (MK-677) in healthy elderly subjects. *J Clin Endocrinol Metab* 81:4249–4257
 86. Copinschi G, Van Onderbergen A, L'Hermite-Baleriaux M, Mendel CM, Caufriez A, Leproult R, Bolognese JA, De Smet M, Thorner MO, Van Cauter E 1996 Effects of a 7-day treatment with a novel, orally active, growth hormone (GH) secretagogue, MK-677, on 24-hour GH profiles, insulin-like growth factor I, and adrenocortical function in normal young men. *J Clin Endocrinol Metab* 81:2776–2782
 87. Jacks T, Smith R, Judith F, Schleim K, Frazier E, Chen H, Krupa D, Hora Jr D, Nargund R, Patchett A, Hickey G 1996 MK-0677, a potent, novel, orally active growth hormone (GH) secretagogue: GH, insulin-like growth factor I, and other hormonal responses in beagles. *Endocrinology* 137:5284–5289
 88. Smith RG, Pong SS, Hickey G, Jacks T, Cheng K, Leonard R, Cohen CJ, Arena JP, Chang CH, Drisko J, Wyvratt M, Fisher M, Nargund R, Patchett A 1996 Modulation of pulsatile GH release through a novel receptor in hypothalamus and pituitary gland. *Recent Prog Horm Res* 51:261–285; discussion 285–286
 89. Thorner MO 1996 Theodore R. Woodward Award. Age-related decline in growth hormone secretion: clinical significance and potential reversibility. *Trans Am Clin Climatol Assoc* 108:99–105; discussion 105–108
 90. Chapman IM, Pescovitz OH, Murphy G, Treep T, Cerchio KA, Krupa D, Gertz B, Polvino WJ, Skiles EH, Pezzoli SS, Thorner MO 1997 Oral administration of growth hormone (GH) releasing peptide-mimetic MK-677 stimulates the GH/insulin-like growth factor-I axis in selected GH-deficient adults. *J Clin Endocrinol Metab* 82:3455–3463
 91. Constanzer ML, Chavez-Eng CM, Matuszewski BK 1997 Determination of a novel growth hormone secretagogue (MK-677) in human plasma at picogram levels by liquid chromatography with atmospheric pressure chemical ionization tandem mass spectrometry. *J Chromatogr B Biomed Sci Appl* 693:131–137
 92. Copinschi G, Leproult R, Van Onderbergen A, Caufriez A, Cole KY, Schilling LM, Mendel CM, De Lepelierre I, Bolognese JA, Van Cauter E 1997 Prolonged oral treatment with MK-677, a novel growth hormone secretagogue, improves sleep quality in man. *Neuroendocrinology* 66:278–286
 93. Hickey GJ, Jacks TM, Schleim KD, Frazier E, Chen HY, Krupa D, Feeney W, Nargund RP, Patchett AA, Smith RG 1997 Repeat administration of the GH secretagogue MK-0677 increases and maintains elevated IGF-I levels in beagles. *J Endocrinol* 152:183–192
 94. Lieber RL, Jacks TM, Mohler RL, Schleim K, Haven M, Cuizon D, Gershuni DH, Lopez MA, Hora Jr D, Nargund R, Feeney W, Hickey GJ 1997 Growth hormone secretagogue increases muscle strength during remobilization after canine hindlimb immobilization. *J Orthop Res* 15:519–527
 95. Bailey AR, Smith RG, Leng G 1998 The nonpeptide growth hormone secretagogue, MK-0677, activates hypothalamic arcuate nucleus neurons *in vivo*. *J Neuroendocrinol* 10:111–118
 96. Murphy MG, Plunkett LM, Gertz BJ, He W, Wittreich J, Polvino WM, Clemmons DR 1998 MK-677, an orally active growth hormone secretagogue, reverses diet-induced catabolism. *J Clin Endocrinol Metab* 83:320–325
 97. Svensson J, Lonn L, Jansson JO, Murphy G, Wyss D, Krupa D, Cerchio K, Polvino W, Gertz B, Boseaus I, Sjostrom L, Bengtsson BA 1998 Two-month treatment of obese subjects with the oral growth hormone (GH) secretagogue MK-677 increases GH secretion, fat-free mass, and energy expenditure. *J Clin Endocrinol Metab* 83:362–369
 98. Svensson J, Ohlsson C, Jansson JO, Murphy G, Wyss D, Krupa D, Cerchio K, Polvino W, Gertz B, Baylink D, Mohan S, Bengtsson BA 1998 Treatment with the oral growth hormone secretagogue MK-677 increases markers of bone formation and bone resorption in obese young males. *J Bone Miner Res* 13:1158–1166
 99. Murphy MG, Bach MA, Plotkin D, Bolognese J, Ng J, Krupa D, Cerchio K, Gertz BJ 1999 Oral administration of the growth hormone secretagogue MK-677 increases markers of bone turnover in healthy and functionally impaired elderly adults. The MK-677 Study Group. *J Bone Miner Res* 14:1182–1188
 100. Schleim KD, Jacks T, Cunningham P, Feeney W, Frazier EG, Niebauer GW, Zhang D, Chen H, Smith RG, Hickey G 1999 Increases in circulating insulin-like growth factor I levels by the oral growth hormone secretagogue MK-0677 in the beagle are dependent upon pituitary mediation. *Endocrinology* 140:1552–1558
 101. Svensson J, Jansson JO, Ottosson M, Johannsson G, Taskinen MR, Wiklund O, Bengtsson BA 1999 Treatment of obese subjects with the oral growth hormone secretagogue MK-677 affects serum concentrations of several lipoproteins, but not lipoprotein(a). *J Clin Endocrinol Metab* 84:2028–2033
 102. Murphy MG, Weiss S, McClung M, Schnitzer T, Cerchio K, Connor J, Krupa D, Gertz BJ 2001 Effect of alendronate and MK-677 (a growth hormone secretagogue), individually and in combination, on markers of bone turnover and bone mineral density in postmenopausal osteoporotic women. *J Clin Endocrinol Metab* 86:1116–1125
 103. Aloï JA, Gertz BJ, Hartman ML, Huhn WC, Pezzoli SS, Wittreich JM, Krupa DA, Thorner MO 1994 Neuroendocrine responses to a novel growth hormone secretagogue, L-692,429, in healthy older subjects. *J Clin Endocrinol Metab* 79:943–949
 104. Gertz BJ, Barrett JS, Eisenhandler R, Krupa DA, Wittreich JM, Seibold JR, Schneider SH 1993 Growth hormone response in man to L-692,429, a novel nonpeptide mimic of growth hormone-releasing peptide-6. *J Clin Endocrinol Metab* 77:1393–1397
 105. Gertz BJ, Sciberras DG, Yogendran L, Christie K, Bador K, Krupa D, Wittreich JM, James I 1994 L-692,429, a nonpeptide growth hormone (GH) secretagogue, reverses glucocorticoid suppression of GH secretion. *J Clin Endocrinol Metab* 79:745–749
 106. Broglio F, Boutignon F, Benso A, Gottero C, Prodam F, Arvat E,

- Ghe C, Catapano F, Torsello A, Locatelli V, Muccioli G, Boeglin D, Guerlavais V, Fehrentz JA, Martinez J, Ghigo E, Deghenghi R 2002 EP1572: a novel peptido-mimetic GH secretagogue with potent and selective GH-releasing activity in man. *J Endocrinol Invest* 25:RC26–RC28
107. Ong H, McNicoll N, Escher E, Collu R, Deghenghi R, Locatelli V, Ghigo E, Muccioli G, Boghen M, Nilsson M 1998 Identification of a pituitary growth hormone-releasing peptide (GHRP) receptor subtype by photoaffinity labeling. *Endocrinology* 139:432–435
 108. Codd EE, Shu AY, Walker RF 1989 Binding of a growth hormone releasing hexapeptide to specific hypothalamic and pituitary binding sites. *Neuropharmacology* 28:1139–1144
 109. Kamegai J, Wakabayashi I, Miyamoto K, Unterman TG, Kineman RD, Frohman LA 1998 Growth hormone-dependent regulation of pituitary GH secretagogue receptor (GHS-R) mRNA levels in the spontaneous dwarf rat. *Neuroendocrinology* 68:312–318
 110. Kamegai J, Wakabayashi I, Kineman RD, Frohman LA 1999 Growth hormone-releasing hormone receptor (GHRH-R) and growth hormone secretagogue receptor (GHS-R) mRNA levels during postnatal development in male and female rats. *J Neuroendocrinol* 11:299–306
 111. Kineman RD, Kamegai J, Frohman LA 1999 Growth hormone (GH)-releasing hormone (GHRH) and the GH secretagogue (GHS), L692,585, differentially modulate rat pituitary GHS-R and GHRH receptor messenger ribonucleic acid levels. *Endocrinology* 140:3581–3586
 112. Smith RG, Leonard R, Bailey AR, Palyha O, Feighner S, Tan C, McKee KK, Pong SS, Griffin P, Howard A 2001 Growth hormone secretagogue receptor family members and ligands. *Endocrine* 14:9–14
 113. McKee KK, Tan CP, Palyha OC, Liu J, Feighner SD, Hreniuk DL, Smith RG, Howard AD, Van der Ploeg LH 1997 Cloning and characterization of two human G protein-coupled receptor genes (GPR38 and GPR39) related to the growth hormone secretagogue and neurotensin receptors. *Genomics* 46:426–434
 114. McKee KK, Palyha OC, Feighner SD, Hreniuk DL, Tan CP, Phillips MS, Smith RG, Van der Ploeg LH, Howard AD 1997 Molecular analysis of rat pituitary and hypothalamic growth hormone secretagogue receptors. *Mol Endocrinol* 11:415–423
 115. Tan CP, McKee KK, Liu Q, Palyha OC, Feighner SD, Hreniuk DL, Smith RG, Howard AD 1998 Cloning and characterization of a human and murine T-cell orphan G protein-coupled receptor similar to the growth hormone secretagogue and neurotensin receptors. *Genomics* 52:223–229
 116. Feighner SD, Howard AD, Prendergast K, Palyha OC, Hreniuk DL, Nargund R, Underwood D, Tata JR, Dean DC, Tan CP, McKee KK, Woods JW, Patchett AA, Smith RG, Van der Ploeg LH 1998 Structural requirements for the activation of the human growth hormone secretagogue receptor by peptide and nonpeptide secretagogues. *Mol Endocrinol* 12:137–145
 117. Palyha OC, Feighner SD, Tan CP, McKee KK, Hreniuk DL, Gao YD, Schleim KD, Yang L, Morriello GJ, Nargund R, Patchett AA, Howard AD, Smith RG 2000 Ligand activation domain of human orphan growth hormone (GH) secretagogue receptor (GHS-R) conserved from pufferfish to humans. *Mol Endocrinol* 14:160–169
 118. Feighner SD, Tan CP, McKee KK, Palyha OC, Hreniuk DL, Pong SS, Austin CP, Figueroa DJ, MacNeil DJ, Cascieri MA, Nargund R, Bakshi RK, Abramovitz M, Stocco R, Kargman S, O'Neill G, Van der Ploeg LH, Evans J, Patchett AA, Smith RG, Howard AD 1999 Receptor for motilin identified in the human gastrointestinal system. *Science* 284:2184–2188
 119. Cheng K, Wei L, Chung LY, Chan WW, Butler B, Smith RG 1997 Inhibition of L-692,429-stimulated rat growth hormone release by a weak substance P antagonist: L-756,867. *J Endocrinol* 152:155–158
 120. Bluet-Pajot MT, Tolle V, Zizzari P, Robert C, Hammond C, Mitchell V, Beauvillain JC, Viollet C, Epelbaum J, Kordon C 2001 Growth hormone secretagogues and hypothalamic networks. *Endocrine* 14:1–8
 121. Korbonits M, Jacobs RA, Aylwin SJ, Burrin JM, Dahia PL, Monson JP, Honegger J, Fahlbush R, Trainer PJ, Chew SL, Besser GM, Grossman AB 1998 Expression of the growth hormone secretagogue receptor in pituitary adenomas and other neuroendocrine tumors. *J Clin Endocrinol Metab* 83:3624–3630
 122. Ghigo E, Arvat E, Broglio F, Giordano R, Gianotti L, Muccioli G, Papotti M, Graziani A, Bisi G, Deghenghi R, Camanni F 1999 Endocrine and non-endocrine activities of growth hormone secretagogues in humans. *Horm Res* 51(Suppl 3):9–15
 123. Cowley MA, Smith RG, Diano S, Tschop M, Pronchuk N, Grove KL, Strasburger CJ, Bidlingmaier M, Esterman M, Heiman ML, Garcia-Segura LM, Nillni EA, Mendez P, Low MJ, Sotonyi P, Friedman JM, Liu H, Pinto S, Colmers WF, Cone RD, Horvath TL 2003 The distribution and mechanism of action of ghrelin in the CNS demonstrates a novel hypothalamic circuit regulating energy homeostasis. *Neuron* 37:649–661
 124. Dornonville de la Cour C, Bjorkqvist M, Sandvik AK, Bakke I, Zhao CM, Chen D, Hakanson R 2001 A-like cells in the rat stomach contain ghrelin and do not operate under gastrin control. *Regul Pept* 99:141–150
 125. Rindi G, Necchi V, Savio A, Torsello A, Zoli M, Locatelli V, Raimondo F, Cocchi D, Solcia E 2002 Characterisation of gastric ghrelin cells in man and other mammals: studies in adult and fetal tissues. *Histochem Cell Biol* 117:511–519
 126. Papotti M, Cassoni P, Volante M, Deghenghi R, Muccioli G, Ghigo E 2001 Ghrelin-producing endocrine tumors of the stomach and intestine. *J Clin Endocrinol Metab* 86:5052–5059
 127. Tomasetto C, Karam SM, Ribieras S, Masson R, Lefebvre O, Staub A, Alexander G, Chenard MP, Rio MC 2000 Identification and characterization of a novel gastric peptide hormone: the motilin-related peptide. *Gastroenterology* 119:395–405
 128. Rindi G, Savio A, Torsello A, Zoli M, Locatelli V, Cocchi D, Paolotti D, Solcia E 2002 Ghrelin expression in gut endocrine growths. *Histochem Cell Biol* 117:521–525
 129. Kanamoto N, Akamizu T, Hosoda H, Hataya Y, Ariyasu H, Takaya K, Hosoda K, Saijo M, Moriyama K, Shimatsu A, Kojima M, Kangawa K, Nakao K 2001 Substantial production of ghrelin by a human medullary thyroid carcinoma cell line. *J Clin Endocrinol Metab* 86:4984–4990
 130. Matsumoto M, Hosoda H, Kitajima Y, Morozumi N, Minamitake Y, Tanaka S, Matsuo H, Kojima M, Hayashi Y, Kangawa K 2001 Structure-activity relationship of ghrelin: pharmacological study of ghrelin peptides. *Biochem Biophys Res Commun* 287:142–146
 131. Hosoda H, Kojima M, Matsuo H, Kangawa K 2000 Ghrelin and des-acyl ghrelin: two major forms of rat ghrelin peptide in gastrointestinal tissue. *Biochem Biophys Res Commun* 279:909–913
 132. Silva Elipse MV, Bednarek MA, Gao YD 2001 1H NMR structural analysis of human ghrelin and its six truncated analogs. *Biopolymers* 59:489–501
 133. Hosoda H, Kojima M, Mizushima T, Shimizu S, Kangawa K 2003 Structural divergence of human ghrelin. Identification of multiple ghrelin-derived molecules produced by post-translational processing. *J Biol Chem* 278:64–70
 134. Del Rincon JP, Thorner MO, Gaylann BG 2001 Motilin-related peptide and ghrelin: lessons from molecular techniques, peptide chemistry, and receptor biology. *Gastroenterology* 120:587–588
 135. Tomasetto C, Wendling C, Rio MC, Poitras P 2001 Identification of cDNA encoding motilin related peptide/ghrelin precursor from dog fundus. *Peptides* 22:2055–2059
 136. Trudel L, Tomasetto C, Rio MC, Bouin M, Plourde V, Eberling P, Poitras P 2002 Ghrelin/motilin-related peptide is a potent prokinetic to reverse gastric postoperative ileus in rat. *Am J Physiol Gastrointest Liver Physiol* 282:G948–G952
 137. Asakawa A, Inui A, Kaga T, Yuzuriha H, Nagata T, Ueno N, Makino S, Fujimiyama M, Nijijima A, Fujino MA, Kasuga M 2001 Ghrelin is an appetite-stimulatory signal from stomach with structural resemblance to motilin. *Gastroenterology* 120:337–345
 138. Coulibe B, Matsuura B, Dong M, Hadac EM, Pinon DI, Feighner SD, Howard AD, Miller LJ 2001 Identification of peptide ligand-binding domains within the human motilin receptor using photoaffinity labeling. *J Biol Chem* 276:35518–35522
 139. Tolle V, Zizzari P, Tomasetto C, Rio MC, Epelbaum J, Bluet-Pajot MT 2001 In vivo and in vitro effects of ghrelin/motilin-related peptide on growth hormone secretion in the rat. *Neuroendocrinology* 73:54–61
 140. Folwaczny C, Chang JK, Tschop M 2001 Ghrelin and motilin: two sides of one coin? *Eur J Endocrinol* 144:R1–R3

141. Samson WK, Lumpkin MD, Nilaver G, McCann SM 1984 Motilin: a novel growth hormone releasing agent. *Brain Res Bull* 12:57–62
142. Depoortere I, Thijs T, Thielemans L, Robberecht P, Peeters TL 2003 Interaction of the growth hormone-releasing peptides ghrelin and growth hormone-releasing peptide-6 with the motilin receptor in the rabbit gastric antrum. *J Pharmacol Exp Ther* 305:660–667
143. Kojima M, Hosoda H, Matsuo H, Kangawa K 2001 Ghrelin: discovery of the natural endogenous ligand for the growth hormone secretagogue receptor. *Trends Endocrinol Metab* 12:118–122
144. Smith RG, Feighner S, Prendergast K, Guan X, Howard A 1999 A new orphan receptor involved in pulsatile growth hormone release. *Trends Endocrinol Metab* 10:128–135
145. Smith RG, Palyha OC, Feighner SD, Tan CP, McKee KK, Hreniuk DL, Yang L, Morriello G, Nargund R, Patchett AA, Howard AD 1999 Growth hormone releasing substances: types and their receptors. *Horm Res* 51(Suppl 3):1–8
146. Petersenn S, Rasch AC, Penschorn M, Beil FU, Schulte HM 2001 Genomic structure and transcriptional regulation of the human growth hormone secretagogue receptor. *Endocrinology* 142:2649–2659
147. Kojima M, Hosoda H, Kangawa K 2001 Purification and distribution of ghrelin: the natural endogenous ligand for the growth hormone secretagogue receptor. *Horm Res* 56(Suppl 1):93–97
148. Chen C, Wu D, Clarke IJ 1996 Signal transduction systems employed by synthetic GH-releasing peptides in somatotrophs. *J Endocrinol* 148:381–386
149. Casanueva FF, Dieguez C 1999 Neuroendocrine regulation and actions of leptin. *Front Neuroendocrinol* 20:317–363
150. Hosoda H, Kojima M, Matsuo H, Kangawa K 2000 Purification and characterization of rat des-Gln14-ghrelin, a second endogenous ligand for the growth hormone secretagogue receptor. *J Biol Chem* 275:21995–22000
151. Broglio F, Benso A, Gottero C, Prodam F, Gauna C, Filtri L, Arvat E, Van Der Lely AJ, Deghenghi R, Ghigo E 2003 Non-acylated ghrelin does not possess the pituitary and pancreatic endocrine activity of acylated ghrelin in humans. *J Endocrinol Invest* 26:192–196
152. Beaumont NJ, Skinner VO, Tan TM, Ramesh BS, Byrne DJ, MacColl GS, Keen JN, Bouloux PM, Mikhailidis DP, Bruckdorfer KR, Vanderpump MP, Srai KS 2003 Ghrelin can bind to a species of high-density lipoprotein associated with paraoxonase. *J Biol Chem* 278:8877–8880
153. Torsello A, Ghe' C, Bresciani E, Catapano F, Ghigo E, Deghenghi R, Locatelli V, Muccioli G 2002 Short ghrelin peptides neither displace ghrelin binding *in vitro* nor stimulate GH release *in vivo*. *Endocrinology* 143:1968–1971
154. Tullin S, Hansen BS, Ankersen M, Moller J, Von Cappelen KA, Thim L 2000 Adenosine is an agonist of the growth hormone secretagogue receptor. *Endocrinology* 141:3397–3402
155. Smith RG, Griffin PR, Xu Y, Smith AG, Liu K, Calacay J, Feighner SD, Pong C, Leong D, Pomes A, Cheng K, Van der Ploeg LH, Howard AD, Schaeffer J, Leonard RJ 2000 Adenosine: a partial agonist of the growth hormone secretagogue receptor. *Biochem Biophys Res Commun* 276:1306–1313
156. Yokote R, Sato M, Matsubara S, Ohye H, Niimi M, Muraio K, Takahara J 1998 Molecular cloning and gene expression of growth hormone-releasing peptide receptor in rat tissues. *Peptides* 19:15–20
157. Shuto Y, Shibasaki T, Wada K, Parhar I, Kamegai J, Sugihara H, Oikawa S, Wakabayashi I 2001 Generation of polyclonal antiserum against the growth hormone secretagogue receptor (GHS-R): evidence that the GHS-R exists in the hypothalamus, pituitary and stomach of rats. *Life Sci* 68:991–996
158. Willesen MG, Kristensen P, Romer J 1999 Co-localization of growth hormone secretagogue receptor and NPY mRNA in the arcuate nucleus of the rat. *Neuroendocrinology* 70:306–316
159. Shintani M, Ogawa Y, Ebihara K, Aizawa-Abe M, Miyanaga F, Takaya K, Hayashi T, Inoue G, Hosoda K, Kojima M, Kangawa K, Nakao K 2001 Ghrelin, an endogenous growth hormone secretagogue, is a novel orexigenic peptide that antagonizes leptin action through the activation of hypothalamic neuropeptide Y/Y1 receptor pathway. *Diabetes* 50:227–232
160. Dickson SL, Luckman SM 1997 Induction of c-fos messenger ribonucleic acid in neuropeptide Y and growth hormone (GH)-releasing factor neurons in the rat arcuate nucleus following systemic injection of the GH secretagogue, GH-releasing peptide-6. *Endocrinology* 138:771–777
161. Hewson AK, Dickson SL 2000 Systemic administration of ghrelin induces Fos and Egr-1 proteins in the hypothalamic arcuate nucleus of fasted and fed rats. *J Neuroendocrinol* 12:1047–1049
162. Katayama M, Nogami H, Nishiyama J, Kawase T, Kawamura K 2000 Developmentally and regionally regulated expression of growth hormone secretagogue receptor mRNA in rat brain and pituitary gland. *Neuroendocrinology* 72:333–340
163. Korbonits M, Bustin SA, Kojima M, Jordan S, Adams EF, Lowe DG, Kangawa K, Grossman AB 2001 The expression of the growth hormone secretagogue receptor ligand ghrelin in normal and abnormal human pituitary and other neuroendocrine tumors. *J Clin Endocrinol Metab* 86:881–887
164. Nagaya N, Miyatake K, Uematsu M, Oya H, Shimizu W, Hosoda H, Kojima M, Nakanishi N, Mori H, Kangawa K 2001 Hemodynamic, renal, and hormonal effects of ghrelin infusion in patients with chronic heart failure. *J Clin Endocrinol Metab* 86:5854–5859
165. Nagaya N, Uematsu M, Kojima M, Ikeda Y, Yoshihara F, Shimizu W, Hosoda H, Hirota Y, Ishida H, Mori H, Kangawa K 2001 Chronic administration of ghrelin improves left ventricular dysfunction and attenuates development of cardiac cachexia in rats with heart failure. *Circulation* 104:1430–1435
166. de Keyser Y, Lenne F, Bertagna X 1997 Widespread transcription of the growth hormone-releasing peptide receptor gene in neuroendocrine human tumors. *Eur J Endocrinol* 137:715–718
167. Bodart V, Bouchard JF, McNicoll N, Escher E, Carriere P, Ghigo E, Sejlitz T, Sirois MG, Lamontagne D, Ong H 1999 Identification and characterization of a new growth hormone-releasing peptide receptor in the heart. *Circ Res* 85:796–802
168. Katugampola S, Davenport A 2003 Emerging roles for orphan G protein-coupled receptors in the cardiovascular system. *Trends Pharmacol Sci* 24:30–35
169. Volante M, Allia E, Gugliotta P, Funaro A, Broglio F, Deghenghi R, Muccioli G, Ghigo E, Papotti M 2002 Expression of ghrelin and of the GH secretagogue receptor by pancreatic islet cells and related endocrine tumors. *J Clin Endocrinol Metab* 87:1300–1308
170. Baldanzi G, Filigheddu N, Cutrupi S, Catapano F, Bonisconi S, Fubini A, Malan D, Baj G, Granata R, Broglio F, Papotti M, Surico N, Bussolino F, Isgaard J, Deghenghi R, Sinigaglia F, Prat M, Muccioli G, Ghigo E, Graziani A 2002 Ghrelin and des-acyl ghrelin inhibit cell death in cardiomyocytes and endothelial cells through ERK1/2 and PI 3-kinase/AKT. *J Cell Biol* 159:1029–1037
171. Filigheddu N, Fubini A, Baldanzi G, Cutrupi S, Ghe C, Catapano F, Broglio F, Bosia A, Papotti M, Muccioli G, Ghigo E, Deghenghi R, Graziani A 2001 Hexarelin protects H9c2 cardiomyocytes from doxorubicin-induced cell death. *Endocrine* 14:113–119
172. Deghenghi R, Papotti M, Ghigo E, Muccioli G, Locatelli V 2001 Somatostatin octapeptides (lanreotide, octreotide, vapreotide, and their analogs) share the growth hormone-releasing peptide receptor in the human pituitary gland. *Endocrine* 14:29–33
173. de Lecea L, Criado JR, Prospero-Garcia O, Gautvik KM, Schweitzer P, Danielson PE, Dunlop CL, Siggins GR, Henriksen SJ, Sutcliffe JG 1996 A cortical neuropeptide with neuronal depressant and sleep-modulating properties. *Nature* 381:242–245
174. de Lecea L, Sutcliffe JG 1996 Peptides, sleep and cortistatin. *Mol Psychiatry* 1:349–351
175. Connor M, Ingram SL, Christie MJ 1997 Cortistatin increase of a potassium conductance in rat locus coeruleus *in vitro*. *Br J Pharmacol* 122:1567–1572
176. de Lecea L, Ruiz-Lozano P, Danielson PE, Pelle-Kirley J, Foye PE, Frankel WN, Sutcliffe JG 1997 Cloning, mRNA expression, and chromosomal mapping of mouse and human preprocortistatin. *Genomics* 42:499–506
177. de Lecea L, del Rio JA, Criado JR, Alcantara S, Morales M, Danielson PE, Henriksen SJ, Soriano E, Sutcliffe JG 1997 Cortistatin is expressed in a distinct subset of cortical interneurons. *J Neurosci* 17:5868–5880
178. Flood JF, Uezu K, Morley JE 1997 The cortical neuropeptide, cortistatin-14, impairs post-training memory processing. *Brain Res* 775:250–252

179. Fukusumi S, Kitada C, Takekawa S, Kizawa H, Sakamoto J, Miyamoto M, Hinuma S, Kitano K, Fujino M 1997 Identification and characterization of a novel human cortistatin-like peptide. *Biochem Biophys Res Commun* 232:157–163
180. Braun H, Schulz S, Becker A, Schroder H, Hollt V 1998 Protective effects of cortistatin (CST-14) against kainate-induced neurotoxicity in rat brain. *Brain Res* 803:54–60
181. Siehler S, Seuwen K, Hoyer D 1998 [125I]Tyr¹⁰-cortistatin¹⁴ labels all five somatostatin receptors. *Naunyn Schmiedebergs Arch Pharmacol* 357:483–489
182. Calbet M, Guadano-Ferraz A, Spier AD, Maj M, Sutcliffe JG, Przewlocki R, de Lecea L 1999 Cortistatin and somatostatin mRNAs are differentially regulated in response to kainate. *Brain Res Mol Brain Res* 72:55–64
183. Criado JR, Li H, Jiang X, Spina M, Huitron-Resendiz S, Liapakis G, Calbet M, Siehler S, Henriksen SJ, Koob G, Hoyer D, Sutcliffe JG, Goodman M, de Lecea L 1999 Structural and compositional determinants of cortistatin activity. *J Neurosci Res* 56:611–619
184. Kreienkamp HJ 1999 Molecular biology of the receptors for somatostatin and cortistatin. *Results Probl Cell Differ* 26:215–237
185. Vasilaki A, Lanneau C, Dournaud P, de Lecea L, Gardette R, Epelbaum J 1999 Cortistatin affects glutamate sensitivity in mouse hypothalamic neurons through activation of sst2 somatostatin receptor subtype. *Neuroscience* 88:359–364
186. Ejeskar K, Abel F, Sjoberg R, Backstrom J, Kogner P, Martinsson T 2000 Fine mapping of the human precortistatin gene (CORT) to neuroblastoma consensus deletion region 1p36.3→p36.2, but absence of mutations in primary tumors. *Cytogenet Cell Genet* 89:62–66
187. Sanchez-Alavez M, Gomez-Chavarin M, Navarro L, Jimenez-Anguiano A, Murillo-Rodriguez E, Prado-Alcala RA, Drucker-Colin R, Prospero-Garcia O 2000 Cortistatin modulates memory processes in rats. *Brain Res* 858:78–83
188. Spier AD, de Lecea L 2000 Cortistatin: a member of the somatostatin neuropeptide family with distinct physiological functions. *Brain Res Brain Res Rev* 33:228–241
189. Adams EF, Petersen B, Lei T, Buchfelder M, Fahlbusch R 1995 The growth hormone secretagogue, L-692,429, induces phosphatidylinositol hydrolysis and hormone secretion by human pituitary tumors. *Biochem Biophys Res Commun* 208:555–561
190. Arvat E, Gianotti L, Di Vito L, Imbimbo BP, Lenaerts V, Deghenghi R, Camanni F, Ghigo E 1995 Modulation of growth hormone-releasing activity of hexarelin in man. *Neuroendocrinology* 61:51–56
191. Broglio F, Arvat E, Benso A, Gottero C, Prodam F, Grottoli S, Papotti M, Muccioli G, Van Der Lely AJ, Deghenghi R, Ghigo E 2002 Endocrine activities of cortistatin-14 and its interaction with GHRH and ghrelin in humans. *J Clin Endocrinol Metab* 87:3783–3790
192. Deghenghi R, Avallone R, Torsello A, Muccioli G, Ghigo E, Locatelli V 2001 Growth hormone-inhibiting activity of cortistatin in the rat. *J Endocrinol Invest* 24:RC31–RC33
193. Arvat E, Di Vito L, Gianotti L, Ramunni J, Boghen MF, Deghenghi R, Camanni F, Ghigo E 1997 Mechanisms underlying the negative growth hormone (GH) autocrine feedback on the GH-releasing effect of hexarelin in man. *Metabolism* 46:83–88
194. Arvat E, Ceda GP, Ramunni J, Di Vito L, Gianotti L, Boghen MF, Deghenghi R, Camanni F, Ghigo E 1996 Supramaximal doses of GHRH or hexarelin, a synthetic hexapeptide, enhance the low somatotrope responsiveness in aging. *J Endocrinol Invest* 19(Suppl 5):3
195. Arvat E, Gianotti L, Ramunni J, Di Vito L, Deghenghi R, Camanni F, Ghigo E 1996 Influence of β -adrenergic agonists and antagonists on the GH-releasing effect of hexarelin in man. *J Endocrinol Invest* 19:25–29
196. Arvat E, Gianotti L, Broglio F, Maccagno B, Bertagna A, Deghenghi R, Camanni F, Ghigo E 1997 Oestrogen replacement does not restore the reduced GH-releasing activity of hexarelin, a synthetic hexapeptide, in post-menopausal women. *Eur J Endocrinol* 136:483–487
197. Wiley KE, Davenport AP 2002 Comparison of vasodilators in human internal mammary artery: ghrelin is a potent physiological antagonist of endothelin-1. *Br J Pharmacol* 136:1146–1152
198. Banks WA, Tschop M, Robinson SM, Heiman ML 2002 Extent and direction of ghrelin transport across the blood-brain barrier is determined by its unique primary structure. *J Pharmacol Exp Ther* 302:822–827
199. Luckman SM, Rosenzweig I, Dickson SL 1999 Activation of arcuate nucleus neurons by systemic administration of leptin and growth hormone-releasing peptide-6 in normal and fasted rats. *Neuroendocrinology* 70:93–100
200. Sakata I, Nakamura K, Yamazaki M, Matsubara M, Hayashi Y, Kangawa K, Sakai T 2002 Ghrelin-producing cells exist as two types of cells, closed- and opened-type cells, in the rat gastrointestinal tract. *Peptides* 23:531–536
201. Moller N, Nygren J, Hansen TK, Orskov H, Frystyk J, Nair KS 2003 Splanchnic release of ghrelin in humans. *J Clin Endocrinol Metab* 88:850–852
202. Cummings DE, Weigle DS, Frayo RS, Breen PA, Ma MK, Dellinger EP, Purnell JQ 2002 Plasma ghrelin levels after diet-induced weight loss or gastric bypass surgery. *N Engl J Med* 346:1623–1630
203. Faraj M, Havel PJ, Phelis S, Blank D, Sniderman AD, Cianflone K 2003 Plasma acylation-stimulating protein, adiponectin, leptin, and ghrelin before and after weight loss induced by gastric bypass surgery in morbidly obese subjects. *J Clin Endocrinol Metab* 88:1594–1602
204. Geloneze B, Tambascia MA, Pilla VF, Geloneze SR, Repetto EM, Pareja JC 2003 Ghrelin: a gut-brain hormone: effect of gastric bypass surgery. *Obes Surg* 13:17–22
205. Holdstock C, Engstrom BE, Ohrvall M, Lind L, Sundbom M, Karlsson FA 2003 Ghrelin and adipose tissue regulatory peptides: effect of gastric bypass surgery in obese humans. *J Clin Endocrinol Metab* 88:3177–3183
206. Date Y, Nakazato M, Hashiguchi S, Dezaki K, Mondal MS, Hosoda H, Kojima M, Kangawa K, Arima T, Matsuo H, Yada T, Matsukura S 2002 Ghrelin is present in pancreatic α -cells of humans and rats and stimulates insulin secretion. *Diabetes* 51:124–129
207. Lu S, Guan JL, Wang QP, Uehara K, Yamada S, Goto N, Date Y, Nakazato M, Kojima M, Kangawa K, Shioda S 2002 Immunocytochemical observation of ghrelin-containing neurons in the rat arcuate nucleus. *Neurosci Lett* 321:157–160
208. Koo GC, Huang C, Camacho R, Trainor C, Blake JT, Sirotnina-Meisher A, Schleim KD, Wu TJ, Cheng K, Nargund R, McKissick G 2001 Immune enhancing effect of a growth hormone secretagogue. *J Immunol* 166:4195–4201
209. Cummings DE, Purnell JQ, Frayo RS, Schmidova K, Wisse BE, Weigle DS 2001 A preprandial rise in plasma ghrelin levels suggests a role in meal initiation in humans. *Diabetes* 50:1714–1719
210. Barkan AL, Dimaraki EV, Jessup SK, Symons KV, Ermolenko M, Jaffe CA 2003 Ghrelin secretion in humans is sexually dimorphic, suppressed by somatostatin, and not affected by the ambient growth hormone levels. *J Clin Endocrinol Metab* 88:2180–2184
211. Saad MF, Bernaba B, Hwu CM, Jinagouda S, Fahmi S, Kogosov E, Boyadjian R 2002 Insulin regulates plasma ghrelin concentration. *J Clin Endocrinol Metab* 87:3997–4000
212. Mohlig M, Spranger J, Otto B, Ristow M, Tschop M, Pfeiffer AF 2002 Euglycemic hyperinsulinemia, but not lipid infusion, decreases circulating ghrelin levels in humans. *J Endocrinol Invest* 25:RC36–RC38
213. Flanagan DE, Evans ML, Monsod TP, Rife F, Heptulla RA, Tamborlane WV, Sherwin RS 2003 The influence of insulin on circulating ghrelin. *Am J Physiol Endocrinol Metab* 284:E313–E316
214. Lucidi P, Murdolo G, Di Loreto C, De Cicco A, Parlanti N, Fanelli C, Santeusiano F, Bolli GB, De Feo P 2002 Ghrelin is not necessary for adequate hormonal counterregulation of insulin-induced hypoglycemia. *Diabetes* 51:2911–2914
215. Masaoka T, Suzuki H, Hosoda H, Ota T, Minegishi Y, Nagata H, Kangawa K, Ishii H 2003 Enhanced plasma ghrelin levels in rats with streptozotocin-induced diabetes. *FEBS Lett* 541:64–68
216. Ostergard T, Hansen TK, Nyholm B, Gravholt CH, Djurhuus CB, Hosoda H, Kangawa K, Schmitz O 2003 Circulating ghrelin concentrations are reduced in healthy offspring of type 2 diabetic subjects, and are increased in women independent of a family history of type 2 diabetes. *Diabetologia* 46:134–136
217. Reimer MK, Pacini G, Ahren B 2003 Dose-dependent inhibition by

- ghrelin of insulin secretion in the mouse. *Endocrinology* 144:916–921
218. Nakagawa E, Nagaya N, Okumura H, Enomoto M, Oya H, Ono F, Hosoda H, Kojima M, Kangawa K 2002 Hyperglycaemia suppresses the secretion of ghrelin, a novel growth-hormone-releasing peptide: responses to the intravenous and oral administration of glucose. *Clin Sci (Lond)* 103:325–328
 219. Shiiya T, Nakazato M, Mizuta M, Date Y, Mondal MS, Tanaka M, Nozoe S, Hosoda H, Kangawa K, Matsukura S 2002 Plasma ghrelin levels in lean and obese humans and the effect of glucose on ghrelin secretion. *J Clin Endocrinol Metab* 87:240–244
 220. Nakai Y, Hosoda H, Nin K, Ooya C, Hayashi H, Akamizu T, Kangawa K 2003 Plasma levels of active form of ghrelin during oral glucose tolerance test in patients with anorexia nervosa. *Eur J Endocrinol* 149:R001–R003
 221. Schaller G, Schmidt A, Pleiner J, Woloszczuk W, Wolzt M, Luger A 2003 Plasma ghrelin concentrations are not regulated by glucose or insulin: a double-blind, placebo-controlled crossover clamp study. *Diabetes* 52:16–20
 222. Williams DL, Cummings DE, Grill HJ, Kaplan JM 2003 Meal-related ghrelin suppression requires postgastric feedback. *Endocrinology* 144:2765–2767
 223. Broglio F, Koetsveld PP, Benso A, Gottero C, Prodam F, Papotti M, Muccioli G, Gauna C, Hofland L, Deghenghi R, Arvat E, Van Der Lely AJ, Ghigo E 2002 Ghrelin secretion is inhibited by either somatostatin or cortistatin in humans. *J Clin Endocrinol Metab* 87:4829–4832
 224. Freda PU, Reyes CM, Conwell IM, Sundeen RE, Wardlaw SL 2003 Serum ghrelin levels in acromegaly: effects of surgical and long-acting octreotide therapy. *J Clin Endocrinol Metab* 88:2037–2044
 225. Norrelund H, Hansen TK, Orskov H, Hosoda H, Kojima M, Kangawa K, Weeke J, Moller N, Christiansen JS, Jorgensen JO 2002 Ghrelin immunoreactivity in human plasma is suppressed by somatostatin. *Clin Endocrinol (Oxf)* 57:539–546
 226. Shimada M, Date Y, Mondal MS, Toshinai K, Shimbara T, Fukunaga K, Murakami N, Miyazato M, Kangawa K, Yoshimatsu H, Matsuo H, Nakazato M 2003 Somatostatin suppresses ghrelin secretion from the rat stomach. *Biochem Biophys Res Commun* 302:520–525
 227. Tannenbaum GS, Epelbaum J, Bowers CY 2003 Interrelationship between the novel peptide ghrelin and somatostatin/growth hormone-releasing hormone in regulation of pulsatile growth hormone secretion. *Endocrinology* 144:967–974
 228. Tschop M, Flora DB, Mayer JP, Heiman ML 2002 Hypophysectomy prevents ghrelin-induced adiposity and increases gastric ghrelin secretion in rats. *Obes Res* 10:991–999
 229. Cappiello V, Ronchi C, Morpurgo PS, Epaminonda P, Arosio M, Beck-Peccoz P, Spada A 2002 Circulating ghrelin levels in basal conditions and during glucose tolerance test in acromegalic patients. *Eur J Endocrinol* 147:189–194
 230. van der Toorn FM, Janssen JA, De Herder WW, Broglio F, Ghigo E, Van Der Lely AJ 2002 Central ghrelin production does not substantially contribute to systemic ghrelin concentrations; a study in two subjects with active acromegaly. *Eur J Endocrinol* 147:195–199
 231. Muller AF, Lamberts SW, Janssen JA, Hofland LJ, Koetsveld PV, Bidlingmaier M, Strasburger CJ, Ghigo E, Van Der Lely AJ 2002 Ghrelin drives GH secretion during fasting in man. *Eur J Endocrinol* 146:203–207
 232. Murdolo G, Lucidi P, Di Loreto C, Parlanti N, De Cicco A, Fanelli C, Perriello G, Mughetti D, Pippi R, Brozzetti A, Santeusano F, De Feo P 2003 Circulating ghrelin levels of visceral obese men are not modified by a short-term treatment with very low doses of GH replacement. *J Endocrinol Invest* 26:244–249
 233. Kalra SP, Dube MG, Pu S, Xu B, Horvath TL, Kalra PS 1999 Interacting appetite-regulating pathways in the hypothalamic regulation of body weight. *Endocr Rev* 20:68–100
 234. Rosicka M, Krsek M, Matoulek M, Jarkovska Z, Marek J, Justova V, Lacinova Z 2003 Serum ghrelin levels in obese patients: the relationship to serum leptin levels and soluble leptin receptors levels. *Physiol Res* 52:61–66
 235. Tolle V, Kadem M, Bluet-Pajot MT, Frere D, Foulon C, Bossu C, Dardennes R, Mounier C, Zizzari P, Lang F, Epelbaum J, Estour B 2003 Balance in ghrelin and leptin plasma levels in anorexia nervosa patients and constitutionally thin women. *J Clin Endocrinol Metab* 88:109–116
 236. Tritos NA, Kokkinos A, Lampadiariou E, Alexiou E, Katsilambros N, Maratos-Flier E 2003 Cerebrospinal fluid ghrelin is negatively associated with body mass index. *J Clin Endocrinol Metab* 88:2943–2946
 237. Weigle DS, Cummings DE, Newby PD, Breen PA, Frayo RS, Matthys CC, Callahan HS, Purnell JQ 2003 Roles of leptin and ghrelin in the loss of body weight caused by a low fat, high carbohydrate diet. *J Clin Endocrinol Metab* 88:1577–1586
 238. Mustonen AM, Nieminen P, Hyvarinen H 2001 Preliminary evidence that pharmacologic melatonin treatment decreases rat ghrelin levels. *Endocrine* 16:43–46
 239. Riis AL, Hansen TK, Moller N, Weeke J, Jorgensen JO 2003 Hyperthyroidism is associated with suppressed circulating ghrelin levels. *J Clin Endocrinol Metab* 88:853–857
 240. Kishimoto M, Okimura Y, Nakata H, Kudo T, Iguchi G, Takahashi Y, Kaji H, Chihara K 2003 Cloning and characterization of the 5'(-)-flanking region of the human ghrelin gene. *Biochem Biophys Res Commun* 305:186–192
 241. Sugino T, Yamaura J, Yamagishi M, Kurose Y, Kojima M, Kangawa K, Hasegawa Y, Terashima Y 2003 Involvement of cholinergic neurons in the regulation of the ghrelin secretory response to feeding in sheep. *Biochem Biophys Res Commun* 304:308–312
 242. Tschop M, Wawarta R, Riepl RL, Friedrich S, Bidlingmaier M, Landgraf R, Folwaczny C 2001 Post-prandial decrease of circulating human ghrelin levels. *J Endocrinol Invest* 24:RC19–RC21
 243. Toshinai K, Mondal MS, Nakazato M, Date Y, Murakami N, Kojima M, Kangawa K, Matsukura S 2001 Upregulation of ghrelin expression in the stomach upon fasting, insulin-induced hypoglycemia, and leptin administration. *Biochem Biophys Res Commun* 281:1220–1225
 244. Hayashida T, Murakami K, Mogi K, Nishihara M, Nakazato M, Mondal MS, Horii Y, Kojima M, Kangawa K, Murakami N 2001 Ghrelin in domestic animals: distribution in stomach and its possible role. *Domest Anim Endocrinol* 21:17–24
 245. Ariyasu H, Takaya K, Tagami T, Ogawa Y, Hosoda K, Akamizu T, Suda M, Koh T, Natsui K, Toyooka S, Shirakami G, Usui T, Shimatsu A, Doi K, Hosoda H, Kojima M, Kangawa K, Nakao K 2001 Stomach is a major source of circulating ghrelin, and feeding state determines plasma ghrelin-like immunoreactivity levels in humans. *J Clin Endocrinol Metab* 86:4753–4758
 246. Ariyasu H, Takaya K, Hosoda H, Iwakura H, Ebihara K, Mori K, Ogawa Y, Hosoda K, Akamizu T, Kojima M, Kangawa K, Nakao K 2002 Delayed short-term secretory regulation of ghrelin in obese animals: evidenced by a specific RIA for the active form of ghrelin. *Endocrinology* 143:3341–3350
 247. Janssen JA, van der Toorn FM, Hofland LJ, van Koetsveld P, Broglio F, Ghigo E, Lamberts SW, Van Der Lely AJ 2001 Systemic ghrelin levels in subjects with growth hormone deficiency are not modified by one year of growth hormone replacement therapy. *Eur J Endocrinol* 145:711–716
 248. Gualillo O, Caminos JE, Kojima M, Kangawa K, Arvat E, Ghigo E, Casanueva FF, Dieguez C 2001 Gender and gonadal influences on ghrelin mRNA levels in rat stomach. *Eur J Endocrinol* 144:687–690
 249. Bellone S, Rapa A, Vivenza D, Castellino N, Petri A, Bellone J, Me E, Broglio F, Prodam F, Ghigo E, Bona G 2002 Circulating ghrelin levels as function of gender, pubertal status and adiposity in childhood. *J Endocrinol Invest* 25:RC13–RC15
 250. Peino R, Baldelli R, Rodriguez-Garcia J, Rodriguez-Segade S, Kojima M, Kangawa K, Arvat E, Ghigo E, Dieguez C, Casanueva FF 2000 Ghrelin-induced growth hormone secretion in humans. *Eur J Endocrinol* 143:R11–R14
 251. Seoane LM, Tovar S, Baldelli R, Arvat E, Ghigo E, Casanueva FF, Dieguez C 2000 Ghrelin elicits a marked stimulatory effect on GH secretion in freely-moving rats. *Eur J Endocrinol* 143:R7–R9
 252. Hataya Y, Akamizu T, Takaya K, Kanamoto N, Ariyasu H, Saijo M, Moriyama K, Shimatsu A, Kojima M, Kangawa K, Nakao K 2001 A low dose of ghrelin stimulates growth hormone (GH) release synergistically with GH-releasing hormone in humans. *J Clin Endocrinol Metab* 86:4552

253. Akman MS, Girard M, O'Brien LF, Ho AK, Chik CL 1993 Mechanisms of action of a second generation growth hormone-releasing peptide (Ala-His-D- β Nal-Ala-Trp-D-Phe-Lys-NH₂) in rat anterior pituitary cells. *Endocrinology* 132:1286–1291
254. Badger TM, Millard WJ, McCormick GF, Bowers CY, Martin JB 1984 The effects of growth hormone (GH)-releasing peptides on GH secretion in perfused pituitary cells of adult male rats. *Endocrinology* 115:1432–1438
255. Cheng K, Chan WW, Barreto Jr A, Convey EM, Smith RG 1989 The synergistic effects of His-D-Trp-Ala-Trp-D-Phe-Lys-NH₂ on growth hormone (GH)-releasing factor-stimulated GH release and intracellular adenosine 3',5'-monophosphate accumulation in rat primary pituitary cell culture. *Endocrinology* 124:2791–2798
256. Cheng K, Chan WW, Butler B, Wei L, Schoen WR, Wyvrat Jr MJ, Fisher MH, Smith RG 1993 Stimulation of growth hormone release from rat primary pituitary cells by L-692,429, a novel non-peptidyl GH secretagogue. *Endocrinology* 132:2729–2731
257. Cheng K, Chan WW, Butler B, Wei L, Smith RG 1993 A novel non-peptidyl growth hormone secretagogue. *Horm Res* 40:109–115
258. Goth MI, Lyons CE, Canny BJ, Thorne MO 1992 Pituitary adenylate cyclase activating polypeptide, growth hormone (GH)-releasing peptide and GH-releasing hormone stimulate GH release through distinct pituitary receptors. *Endocrinology* 130:939–944
259. Herrington J, Hille B 1994 Growth hormone-releasing hexapeptide elevates intracellular calcium in rat somatotropes by two mechanisms. *Endocrinology* 135:1100–1108
260. Locatelli V, Grilli R, Torsello A, Cella SG, Wehrenberg WB, Muller EE 1994 Growth hormone-releasing hexapeptide is a potent stimulator of growth hormone gene expression and release in the growth hormone-releasing hormone-deprived infant rat. *Pediatr Res* 36:169–174
261. Smith RG, Cheng K, Schoen WR, Pong SS, Hickey G, Jacks T, Butler B, Chan WW, Chaung LY, Judith F 1993 A nonpeptidyl growth hormone secretagogue. *Science* 260:1640–1643
262. Wu D, Chen C, Zhang J, Katoh K, Clarke I 1994 Effects in vitro of new growth hormone releasing peptide (GHRP-1) on growth hormone secretion from ovine pituitary cells in primary culture. *J Neuroendocrinol* 6:185–190
263. Wu D, Chen C, Katoh K, Zhang J, Clarke IJ 1994 The effect of GH-releasing peptide-2 (GHRP-2 or KP 102) on GH secretion from primary cultured ovine pituitary cells can be abolished by a specific GH-releasing factor (GRF) receptor antagonist. *J Endocrinol* 140:R9–R13
264. Glavaski-Joksimovic A, Jeftinija K, Scanes CG, Anderson LL, Jeftinija S 2003 Stimulatory effect of ghrelin on isolated porcine somatotropes. *Neuroendocrinology* 77:367–379
265. Hashizume T, Horiuchi M, Tate N, Nonaka S, Mikami U, Kojima M 2003 Effects of ghrelin on growth hormone secretion from cultured adenohypophysial cells in pigs. *Domest Anim Endocrinol* 24:209–218
266. Blake AD, Smith RG 1991 Desensitization studies using perfused rat pituitary cells show that growth hormone-releasing hormone and His-D-Trp-Ala-Trp-D-Phe-Lys-NH₂ stimulate growth hormone release through distinct receptor sites. *J Endocrinol* 129:11–19
267. Bowers CY, Momany FA, Reynolds GA, Hong A 1984 On the *in vitro* and *in vivo* activity of a new synthetic hexapeptide that acts on the pituitary to specifically release growth hormone. *Endocrinology* 114:1537–1545
268. Mazza E, Ghigo E, Goffi S, Procopio M, Imperiale E, Arvat E, Bellone J, Bogen MF, Muller EE, Camanni F 1989 Effect of the potentiation of cholinergic activity on the variability in individual GH response to GH-releasing hormone. *J Endocrinol Invest* 12:795–798
269. Clark RG, Carlsson MS, Trojnar J, Robinson IC 1989 The effects of a growth hormone-releasing peptide and growth hormone-releasing factor in conscious and anaesthetized rats. *J Neuroendocrinol* 1:249–255
270. Malozowski S, Hao EH, Ren SG, Marin G, Liu L, Southers JL, Merriam GR 1991 Growth hormone (GH) responses to the hexapeptide GH-releasing peptide and GH-releasing hormone (GHRH) in the cynomolgus macaque: evidence for non-GHRH-mediated responses. *J Clin Endocrinol Metab* 73:314–317
271. Fletcher TP, Thomas GB, Willoughby JO, Clarke IJ 1994 Constitutive growth hormone secretion in sheep after hypothalamopituitary disconnection and the direct *in vivo* pituitary effect of growth hormone releasing peptide 6. *Neuroendocrinology* 60:76–86
272. Hickey GJ, Drisko J, Faidley T, Chang C, Anderson LL, Nicolich S, McGuire L, Rickes E, Krupa D, Feeney W, Friscino B, Cunningham P, Frazier E, Chen H, Laroque P, Smith RG 1996 Mediation by the central nervous system is critical to the *in vivo* activity of the GH secretagogue L-692,585. *J Endocrinol* 148:371–380
273. Mallo F, Alvarez CV, Benitez L, Burguera B, Coya R, Casanueva FF, Dieguez C 1993 Regulation of His-dTrp-Ala-Trp-dPhe-Lys-NH₂ (GHRP-6)-induced GH secretion in the rat. *Neuroendocrinology* 57:247–256
274. Bercu BB, Yang SW, Masuda R, Walker RF 1992 Role of selected endogenous peptides in growth hormone-releasing hexapeptide activity: analysis of growth hormone-releasing hormone, thyroid hormone-releasing hormone, and gonadotropin-releasing hormone. *Endocrinology* 130:2579–2586
275. Conley LK, Teik JA, Deghenghi R, Imbimbo BP, Giustina A, Locatelli V, Wehrenberg WB 1995 Mechanism of action of hexarelin and GHRP-6: analysis of the involvement of GHRH and somatostatin in the rat. *Neuroendocrinology* 61:44–50
276. Yagi H, Kaji H, Sato M, Okimura Y, Chihara K 1996 Effect of intravenous or intracerebroventricular injections of His-D-Trp-Ala-Trp-D-Phe-Lys-NH₂ on GH release in conscious, freely moving male rats. *Neuroendocrinology* 63:198–206
277. Guillaume V, Magnan E, Cataldi M, Dutour A, Sauze N, Renard M, Razafindraibe H, Conte-Devolx B, Deghenghi R, Lenaerts V 1994 Growth hormone (GH)-releasing hormone secretion is stimulated by a new GH-releasing hexapeptide in sheep. *Endocrinology* 135:1073–1076
278. Korbonits M, Grossman AB 1995 Growth hormone-releasing peptide and its analogues. *Trends Endocrinol Metab* 6:43–49
279. Dickson SL, Doutrelant-Viltart O, Leng G 1995 GH-deficient dw/dw rats and lit/lit mice show increased Fos expression in the hypothalamic arcuate nucleus following systemic injection of GH-releasing peptide-6. *J Endocrinol* 146:519–526
280. Dickson SL, Leng G, Dyball RE, Smith RG 1995 Central actions of peptide and non-peptide growth hormone secretagogues in the rat. *Neuroendocrinology* 61:36–43
281. Sirinathsinghji DJ, Chen HY, Hopkins R, Trumbauer M, Heavens R, Rigby M, Smith RG, Van der Ploeg LH 1995 Induction of c-fos mRNA in the arcuate nucleus of normal and mutant growth hormone-deficient mice by a synthetic non-peptidyl growth hormone secretagogue. *Neuroreport* 6:1989–1992
282. Drisko JE, Faidley TD, Zhang D, McDonald TJ, Nicolich S, Hora DF, Cunningham P, Li C, Rickes E, McNamara L, Chang C, Smith RG, Hickey GJ 1999 Administration of a nonpeptidyl growth hormone secretagogue, L-163, 255, changes somatostatin pattern, but has no effect on patterns of growth hormone-releasing factor in the hypophyseal-portal circulation of the conscious pig. *Proc Soc Exp Biol Med* 222:70–77
283. Korbonits M, Little JA, Forsling ML, Tringali G, Costa A, Navarra P, Trainer PJ, Grossman AB 1999 The effect of growth hormone secretagogues and neuropeptide Y on hypothalamic hormone release from acute rat hypothalamic explants. *J Neuroendocrinol* 11:521–528
284. Korbonits M, Little JA, Trainer PJ, Besser GM, Grossman AB 1996 Analogues of growth hormone-releasing peptide (GRHP) do not affect the release of growth hormone-releasing hormone (GHRH) or somatostatin from the rat hypothalamus. *J Endocrinol* 148 (Suppl):123
285. Jacks T, Hickey G, Judith F, Taylor J, Chen H, Krupa D, Feeney W, Schoen W, Ok D, Fisher M 1994 Effects of acute and repeated intravenous administration of L-692,585, a novel non-peptidyl growth hormone secretagogue, on plasma growth hormone, IGF-1, ACTH, cortisol, prolactin, insulin, and thyroxine levels in beagles. *J Endocrinol* 143:399–406
286. Walker RF, Yang SW, Masuda R, Hu CS, Bercu BB 1993 Effects of growth hormone-releasing peptides on stimulated growth hormone secretion in old rats. In: Bercu BB, Walker RF, eds. *Growth hormone II, basic and clinical aspects*. New York: Springer-Verlag; 167–192
287. Popovic V, Damjanovic S, Micic D, Djurovic M, Dieguez C,

- Casanueva FF 1995 Blocked growth hormone-releasing peptide (GHRP-6)-induced GH secretion and absence of the synergic action of GHRP-6 plus GH-releasing hormone in patients with hypothalamic-pituitary disconnection: evidence that GHRP-6 main action is exerted at the hypothalamic level. *J Clin Endocrinol Metab* 80:942–947
288. Pandya N, DeMott-Friberg R, Bowers CY, Barkan AL, Jaffe CA 1998 Growth hormone (GH)-releasing peptide-6 requires endogenous hypothalamic GH-releasing hormone for maximal GH stimulation. *J Clin Endocrinol Metab* 83:1186–1189
289. Popovic V, Miljic D, Micic D, Damjanovic S, Arvat E, Ghigo E, Dieguez C, Casanueva FF 2003 Ghrelin main action on the regulation of growth hormone release is exerted at hypothalamic level. *J Clin Endocrinol Metab* 88:3450–3453
290. Maheshwari HG, Pezzoli SS, Rahim A, Shalet SM, Thorner MO, Baumann G 2002 Pulsatile growth hormone secretion persists in genetic growth hormone-releasing hormone resistance. *Am J Physiol Endocrinol Metab* 282:E943–E951
291. Maheshwari HG, Rahim A, Shalet SM, Baumann G 1999 Selective lack of growth hormone (GH) response to the GH-releasing peptide hexarelin in patients with GH-releasing hormone receptor deficiency. *J Clin Endocrinol Metab* 84:956–959
292. Gondo RG, Aguiar-Oliveira MH, Hayashida CY, Toledo SP, Abelin N, Levine MA, Bowers CY, Souza AH, Pereira RM, Santos NL, Salvatori R 2001 Growth hormone-releasing peptide-2 stimulates GH secretion in GH-deficient patients with mutated GH-releasing hormone receptor. *J Clin Endocrinol Metab* 86:3279–3283
293. Di Vito L, Broglio F, Benso A, Gottero C, Prodam F, Papotti M, Muccioli G, Dieguez C, Casanueva FF, Deghenghi R, Ghigo E, Arvat E 2002 The GH-releasing effect of ghrelin, a natural GH secretagogue, is only blunted by the infusion of exogenous somatostatin in humans. *Clin Endocrinol (Oxf)* 56:643–648
294. Broglio F, Benso A, Gottero C, Prodam F, Grotoli S, Tassone F, Maccario M, Casanueva FF, Dieguez C, Deghenghi R, Ghigo E, Arvat E 2002 Effects of glucose, free fatty acids or arginine load on the GH-releasing activity of ghrelin in humans. *Clin Endocrinol (Oxf)* 57:265–271
295. Ghigo E, Gianotti L, Arvat E, Ramunni J, Valetto MR, Broglio F, Rolla M, Cavagnini F, Muller EE 1999 Effects of recombinant human insulin-like growth factor I administration on growth hormone (GH) secretion, both spontaneous and stimulated by GH-releasing hormone or hexarelin, a peptidyl GH secretagogue, in humans. *J Clin Endocrinol Metab* 84:285–290
296. Massoud AF, Hindmarsh PC, Brook CG 1995 Hexarelin induced growth hormone release is influenced by exogenous growth hormone. *Clin Endocrinol (Oxf)* 43:617–621
297. DeBell WK, Pezzoli SS, Thorner MO 1991 Growth hormone (GH) secretion during continuous infusion of GH-releasing peptide: partial response attenuation. *J Clin Endocrinol Metab* 72:1312–1316
298. Van den Berghe G, de Zegher F, Bowers CY, Wouters P, Muller P, Soetens F, Vlasselaers D, Schetz M, Verwaest C, Lauwers P, Bouillon R 1996 Pituitary responsiveness to GH-releasing hormone, GH-releasing peptide-2 and thyrotrophin-releasing hormone in critical illness. *Clin Endocrinol (Oxf)* 45:341–351
299. Huhn WC, Hartman ML, Pezzoli SS, Thorner MO 1993 Twenty-four-hour growth hormone (GH)-releasing peptide (GHRP) infusion enhances pulsatile GH secretion and specifically attenuates the response to a subsequent GHRP bolus. *J Clin Endocrinol Metab* 76:1202–1208
300. Jaffe CA, Ho PJ, DeMott-Friberg R, Bowers CY, Barkan AL 1993 Effects of a prolonged growth hormone (GH)-releasing peptide infusion on pulsatile GH secretion in normal men. *J Clin Endocrinol Metab* 77:1641–1647
301. Massoud AF, Hindmarsh PC, Matthews DR, Brook CG 1996 The effect of repeated administration of hexarelin, a growth hormone releasing peptide, and growth hormone releasing hormone on growth hormone responsiveness. *Clin Endocrinol (Oxf)* 44:555–562
302. Sartorio A, Conti A, Ferrero S, Spada A, Faglia G 1995 GH responsiveness to repeated GHRH or hexarelin administration in normal adults. *J Endocrinol Invest* 18:718–722
303. Ghigo E, Arvat E, Gianotti L, Imbimbo BP, Lenaerts V, Deghenghi R, Camanni F 1994 Growth hormone-releasing activity of hexarelin, a new synthetic hexapeptide, after intravenous, subcutaneous, intranasal, and oral administration in man. *J Clin Endocrinol Metab* 78:693–698
304. Ghigo E, Arvat E, Gianotti L, Grotoli S, Rizzi G, Ceda GP, Boghen MF, Deghenghi R, Camanni F 1996 Short-term administration of intranasal or oral hexarelin, a synthetic hexapeptide, does not desensitize the growth hormone responsiveness in human aging. *Eur J Endocrinol* 135:407–412
305. Hayashi S, Okimura Y, Yagi H, Uchiyama T, Takeshima Y, Shakutsui S, Oohashi S, Bowers CY, Chihara K 1991 Intranasal administration of His-D-Trp-Ala-Trp-D-Phe-LysNH₂ (growth hormone releasing peptide) increased plasma growth hormone and insulin-like growth factor-I levels in normal men. *Endocrinol Jpn* 38:15–21
306. Laron Z, Frenkel J, Deghenghi R, Anin S, Klinger B, Silbergeld A 1995 Intranasal administration of the GHRP hexarelin accelerates growth in short children. *Clin Endocrinol (Oxf)* 43:631–635
307. Arvat E, Ceda GP, Di Vito L, Ramunni J, Gianotti L, Broglio F, Deghenghi R, Ghigo E 1998 Age-related variations in the neuroendocrine control, more than impaired receptor sensitivity, cause the reduction in the GH-releasing activity of GHRPs in human aging. *Pituitary* 1:51–58
308. Arvat E, Camanni F, Ghigo E 1997 Age-related growth hormone-releasing activity of growth hormone secretagogues in humans. *Acta Paediatr Suppl* 423:92–96
309. Carmignac DF, Bennett PA, Robinson IC 1998 Effects of growth hormone secretagogues on prolactin release in anesthetized dwarf (dw/dw) rats. *Endocrinology* 139:3590–3596
310. Loche S, Colao A, Cappa M, Bellone J, Aimaretti G, Farello G, Faedda A, Lombardi G, Deghenghi R, Ghigo E 1997 The growth hormone response to hexarelin in children: reproducibility and effect of sex steroids. *J Clin Endocrinol Metab* 82:861–864
311. Bellone J, Aimaretti G, Bartolotta E, Benso L, Imbimbo BP, Lenaerts V, Deghenghi R, Camanni F, Ghigo E 1995 Growth hormone-releasing activity of hexarelin, a new synthetic hexapeptide, before and during puberty. *J Clin Endocrinol Metab* 80:1090–1094
312. Anderson SM, Wideman L, Patrie JT, Wiltman A, Bowers CY, Veldhuis JD 2001 E2 supplementation selectively relieves GH's autonegative feedback on GH-releasing peptide-2-stimulated GH secretion. *J Clin Endocrinol Metab* 86:5904–5911
313. Anderson SM, Shah N, Evans WS, Patrie JT, Bowers CY, Veldhuis JD 2001 Short-term estradiol supplementation augments growth hormone (GH) secretory responsiveness to dose-varying GH-releasing peptide infusions in healthy postmenopausal women. *J Clin Endocrinol Metab* 86:551–560
314. Giustina A, Veldhuis JD 1998 Pathophysiology of the neuroregulation of growth hormone secretion in experimental animals and the human. *Endocr Rev* 19:717–797
315. Thorner MO, Chapman IM, Gaylinn BD, Pezzoli SS, Hartman ML 1997 Growth hormone-releasing hormone and growth hormone-releasing peptide as therapeutic agents to enhance growth hormone secretion in disease and aging. *Recent Prog Horm Res* 52:215–244; discussion 244–246
316. Broglio F, Benso A, Castiglioni C, Gottero C, Prodam F, Destefanis S, Gauna C, Van Der Lely AJ, Deghenghi R, Bo M, Arvat E, Ghigo E 2003 The endocrine response to ghrelin as a function of gender in humans in young and elderly subjects. *J Clin Endocrinol Metab* 88:1537–1542
317. Leal-Cerro A, Garcia E, Astorga R, Casanueva FF, Dieguez C 1995 Growth hormone (GH) responses to the combined administration of GH-releasing hormone plus GH-releasing peptide 6 in adults with GH deficiency. *Eur J Endocrinol* 132:712–715
318. Ghigo E, Arvat E, Aimaretti G, Broglio F, Giordano R, Camanni F 1998 Diagnostic and therapeutic uses of growth hormone-releasing substances in adult and elderly subjects. *Baillieres Clin Endocrinol Metab* 12:341–358
319. Popovic V, Leal A, Micic D, Koppeschaar HP, Torres E, Paramo C, Obradovic S, Dieguez C, Casanueva FF 2000 GH-releasing hormone and GH-releasing peptide-6 for diagnostic testing in GH-deficient adults. *Lancet* 356:1137–1142
320. Aimaretti G, Baffoni C, Broglio F, Janssen JA, Corneli G, Deghenghi R, Van Der Lely AJ, Ghigo E, Arvat E 2002 Endocrine responses to ghrelin in adult patients with isolated childhood-onset growth hormone deficiency. *Clin Endocrinol (Oxf)* 56:765–771

321. **Corpas E, Harman SM, Blackman MR** 1993 Human growth hormone and human aging. *Endocr Rev* 14:20–39
322. **Ghigo E, Bellone J, Aimaretti G, Bellone S, Loche S, Cappa M, Bartolotta E, Dammacco F, Camanni F** 1996 Reliability of provocative tests to assess growth hormone secretory status. Study in 472 normally growing children. *J Clin Endocrinol Metab* 81:3323–3327
323. **Arvat E, Di Vito L, Maccagno B, Broglio F, Boghen MF, Deghenghi R, Camanni F, Ghigo E** 1997 Effects of GHRP-2 and hexarelin, two synthetic GH-releasing peptides, on GH, prolactin, ACTH and cortisol levels in man. Comparison with the effects of GHRH, TRH and hCRH. *Peptides* 18:885–891
324. **Riley LG, Hirano T, Grau EG** 2002 Rat ghrelin stimulates growth hormone and prolactin release in the tilapia, *Oreochromis mossambicus*. *Zoolog Sci* 19:797–800
325. **Arvat E, Ramunni J, Bellone J, Di Vito L, Baffoni C, Broglio F, Deghenghi R, Bartolotta E, Ghigo E** 1997 The GH, prolactin, ACTH and cortisol responses to hexarelin, a synthetic hexapeptide, undergo different age-related variations. *Eur J Endocrinol* 137:635–642
326. **Bowers CY, Granda-Ayala R** 1996 GHRP-2, GHRH and SRIF interrelationships during chronic administration of GHRP-2 to humans. *J Pediatr Endocrinol Metab* 9(Suppl 3):261–270
327. **Korbonits M, Kaltsas G, Perry LA, Putignano P, Grossman AB, Besser GM, Trainer PJ** 1999 The growth hormone secretagogue hexarelin stimulates the hypothalamo-pituitary-adrenal axis via arginine vasopressin. *J Clin Endocrinol Metab* 84:2489–2495
328. **Korbonits M, Trainer PJ, Besser GM** 1995 The effect of an opiate antagonist on the hormonal changes induced by hexarelin. *Clin Endocrinol (Oxf)* 43:365–371
329. **Clark RG, Thomas GB, Mortensen DL, Won WB, Ma YH, Tomlinson EE, Fairhall KM, Robinson IC** 1997 Growth hormone secretagogues stimulate the hypothalamic-pituitary-adrenal axis and are diabetogenic in the Zucker diabetic fatty rat. *Endocrinology* 138:4316–4323
330. **Thomas GB, Fairhall KM, Robinson IC** 1997 Activation of the hypothalamo-pituitary-adrenal axis by the growth hormone (GH) secretagogue, GH-releasing peptide-6, in rats. *Endocrinology* 138:1585–1591
331. **Ghigo E, Arvat E, Camanni F** 1998 Growth hormone secretagogues as corticotrophin-releasing factors. *Growth Horm IGF Res* 8(Suppl B):145–148
332. **Shimon I, Yan X, Melmed S** 1998 Human fetal pituitary expresses functional growth hormone-releasing peptide receptors. *J Clin Endocrinol Metab* 83:174–178
333. **Ishizaki S, Murase T, Sugimura Y, Kakiya S, Yokoi H, Tachikawa K, Arima H, Miura Y, Oiso Y** 2002 Role of ghrelin in the regulation of vasopressin release in conscious rats. *Endocrinology* 143:1589–1593
334. **Arvat E, Maccagno B, Ramunni J, Di Vito L, Gianotti L, Broglio F, Benso A, Deghenghi R, Camanni F, Ghigo E** 1998 Effects of dexamethasone and alprazolam, a benzodiazepine, on the stimulatory effect of hexarelin, a synthetic GHRP, on ACTH, cortisol and GH secretion in humans. *Neuroendocrinology* 67:310–316
335. **Arvat E, Giordano R, Ramunni J, Arnaldi G, Colao A, Deghenghi R, Lombardi G, Mantero F, Camanni F, Ghigo E** 1998 Adrenocorticotropin and cortisol hyperresponsiveness to hexarelin in patients with Cushing's disease bearing a pituitary microadenoma, but not in those with macroadenoma. *J Clin Endocrinol Metab* 83:4207–4211
336. **Ghigo E, Arvat E, Ramunni J, Colao A, Gianotti L, Deghenghi R, Lombardi G, Camanni F** 1997 Adrenocorticotropin- and cortisol-releasing effect of hexarelin, a synthetic growth hormone-releasing peptide, in normal subjects and patients with Cushing's syndrome. *J Clin Endocrinol Metab* 82:2439–2444
337. **Barlier A, Zamora AJ, Grino M, Gunz G, Pellegrini-Bouiller I, Morange-Ramos I, Figarella-Branger D, Dufour H, Jaquet P, Enjalbert A** 1999 Expression of functional growth hormone secretagogue receptors in human pituitary adenomas: polymerase chain reaction, triple in-situ hybridization and cell culture studies. *J Neuroendocrinol* 11:491–502
338. **Locke W, Kirgis HD, Bowers CY, Abdoh AA** 1995 Intracerebroventricular growth-hormone-releasing peptide-6 stimulates eating without affecting plasma growth hormone responses in rats. *Life Sci* 56:1347–1352
339. **Okada K, Ishii S, Minami S, Sugihara H, Shibasaki T, Wakabayashi I** 1996 Intracerebroventricular administration of the growth hormone-releasing peptide KP-102 increases food intake in free-feeding rats. *Endocrinology* 137:5155–5158
340. **Torsello A, Luoni M, Schweiger F, Grilli R, Guidi M, Bresciani E, Deghenghi R, Muller EE, Locatelli V** 1998 Novel hexarelin analogs stimulate feeding in the rat through a mechanism not involving growth hormone release. *Eur J Pharmacol* 360:123–129
341. **Torsello A, Locatelli V, Melis MR, Succu S, Spano MS, Deghenghi R, Muller EE, Argiolas A** 2000 Differential orexigenic effects of hexarelin and its analogs in the rat hypothalamus: indication for multiple growth hormone secretagogue receptor subtypes. *Neuroendocrinology* 72:327–332
342. **Dickson SL, Leng G, Robinson IC** 1993 Systemic administration of growth hormone-releasing peptide activates hypothalamic arcuate neurons. *Neuroscience* 53:303–306
343. **Dickson SL, Leng G, Robinson IC** 1994 Electrical stimulation of the rat periventricular nucleus influences the activity of hypothalamic arcuate neurones. *J Neuroendocrinol* 6:359–367
344. **Dickson SL, Doutrelant-Viltart O, Dyball RE, Leng G** 1996 Retrogradely labelled neurosecretory neurones of the rat hypothalamic arcuate nucleus express Fos protein following systemic injection of GH-releasing peptide-6. *J Endocrinol* 151:323–331
345. **Dickson SL, Viltart O, Bailey AR, Leng G** 1997 Attenuation of the growth hormone secretagogue induction of Fos protein in the rat arcuate nucleus by central somatostatin action. *Neuroendocrinology* 66:188–194
346. **Salomon F, Cuneo RC, Hesp R, Sonksen PH** 1989 The effects of treatment with recombinant human growth hormone on body composition and metabolism in adults with growth hormone deficiency. *N Engl J Med* 321:1797–1803
347. **Vernon RG** 1996 GH inhibition of lipogenesis and stimulation of lipolysis in sheep adipose tissue: involvement of protein serine phosphorylation and dephosphorylation and phospholipase C. *J Endocrinol* 150:129–140
348. **Cowley MA, Cone RD, Enriori P, Louiselle I, Williams SM, Evans AE** 2003 Electrophysiological actions of peripheral hormones on melanocortin neurons. *Ann NY Acad Sci* 994:175–186
349. **Kohno D, Gao HZ, Muroya S, Kikuyama S, Yada T** 2003 Ghrelin directly interacts with neuropeptide-Y-containing neurons in the rat arcuate nucleus: Ca(2+) signaling via protein kinase A and N-type channel-dependent mechanisms and cross-talk with leptin and orexin. *Diabetes* 52:948–956
350. **Olszewski PK, Li D, Grace MK, Billington CJ, Kotz CM, Levine AS** 2003 Neural basis of orexigenic effects of ghrelin acting within lateral hypothalamus. *Peptides* 24:597–602
351. **Riediger T, Traebert M, Schmid HA, Scheel C, Lutz TA, Scharrer E** 2003 Site-specific effects of ghrelin on the neuronal activity in the hypothalamic arcuate nucleus. *Neurosci Lett* 341:151–155
352. **Seoane LM, Lopez M, Tovar S, Casanueva FF, Senaris R, Dieguez C** 2003 Agouti-related peptide, neuropeptide Y, and somatostatin-producing neurons are targets for ghrelin actions in the rat hypothalamus. *Endocrinology* 144:544–551
353. **Tschop M, Statnick MA, Suter TM, Heiman ML** 2002 GH-releasing peptide-2 increases fat mass in mice lacking NPY: indication for a crucial mediating role of hypothalamic agouti-related protein. *Endocrinology* 143:558–568
354. **Lissett CA, Shalet SM** 2000 Effects of growth hormone on bone and muscle. *Growth Horm IGF Res* 10(Suppl B):S95–S101
355. **Lall S, Tung LY, Ohlsson C, Jansson JO, Dickson SL** 2001 Growth hormone (GH)-independent stimulation of adiposity by GH secretagogues. *Biochem Biophys Res Commun* 280:132–138
356. **Spiegelman BM, Flier JS** 2001 Obesity and the regulation of energy balance. *Cell* 104:531–543
357. **Tung YC, Hewson AK, Dickson SL** 2001 Actions of leptin on growth hormone secretagogue-responsive neurones in the rat hypothalamic arcuate nucleus recorded in vitro. *J Neuroendocrinol* 13:209–215
358. **Ahima RS, Osei SY** 2001 Molecular regulation of eating behavior: new insights and prospects for therapeutic strategies. *Trends Mol Med* 7:205–213

359. Schwartz MW, Woods SC, Porte Jr D, Seeley RJ, Baskin DG 2000 Central nervous system control of food intake. *Nature* 404:661–671
360. Elmquist JK 2000 Anatomic basis of leptin action in the hypothalamus. *Front Horm Res* 26:21–24
361. Shuto Y, Shibasaki T, Otagiri A, Kuriyama H, Ohata H, Tamura H, Kamegai J, Sugihara H, Oikawa S, Wakabayashi I 2002 Hypothalamic growth hormone secretagogue receptor regulates growth hormone secretion, feeding, and adiposity. *J Clin Invest* 109:1429–1436
362. Gehlert DR 1999 Role of hypothalamic neuropeptide Y in feeding and obesity. *Neuropeptides* 33:329–338
363. Tritos NA, Maratos-Flier E 1999 Two important systems in energy homeostasis: melanocortins and melanin-concentrating hormone. *Neuropeptides* 33:339–349
364. Banks WA 2001 Enhanced leptin transport across the blood-brain barrier by α 1-adrenergic agents. *Brain Res* 899:209–217
365. Banks WA 2001 Leptin transport across the blood-brain barrier: implications for the cause and treatment of obesity. *Curr Pharm Des* 7:125–133
366. Merchenthaler I 1991 Neurons with access to the general circulation in the central nervous system of the rat: a retrograde tracing study with fluoro-gold. *Neuroscience* 44:655–662
367. Marks DL, Cone RD 2001 Central melanocortins and the regulation of weight during acute and chronic disease. *Recent Prog Horm Res* 56:359–375
368. Palmiter RD, Erickson JC, Hollopeter G, Baraban SC, Schwartz MW 1998 Life without neuropeptide Y. *Recent Prog Horm Res* 53:163–199
369. Friedman MI 1998 Fuel partitioning and food intake. *Am J Clin Nutr* 67:513S–518S
370. Sakata I, Yamazaki M, Inoue K, Hayashi Y, Kangawa K, Sakai T 2003 Growth hormone secretagogue receptor expression in the cells of the stomach-projected afferent nerve in the rat nodose ganglion. *Neurosci Lett* 342:183–186
371. Wei JY, Wang YH 2000 Effect of CCK pretreatment on the CCK sensitivity of rat polymodal gastric vagal afferent in vitro. *Am J Physiol Endocrinol Metab* 279:E695–E706
372. Date Y, Murakami N, Toshinai K, Matsukura S, Nijijima A, Matsuo H, Kangawa K, Nakazato M 2002 The role of the gastric afferent vagal nerve in ghrelin-induced feeding and growth hormone secretion in rats. *Gastroenterology* 123:1120–1128
373. Broglio F, Gottero C, Benso A, Prodam F, Casanueva FF, Dieguez C, Van Der Lely AJ, Deghenghi R, Arvat E, Ghigo E 2003 Acetylcholine does not play a major role in mediating the endocrine responses to ghrelin, a natural ligand of the GH secretagogue receptor, in humans. *Clin Endocrinol (Oxf)* 58:92–98
374. Choi K, Roh SG, Hong YH, Shrestha YB, Hishikawa D, Chen C, Kojima M, Kangawa K, Sasaki S 2003 The role of ghrelin and growth hormone secretagogues receptor on rat adipogenesis. *Endocrinology* 144:754–759
375. Van Cauter E, Plat L, Leproult R, Copinschi G 1998 Alterations of circadian rhythmicity and sleep in aging: endocrine consequences. *Horm Res* 49:147–152
376. Frieboes RM, Murck H, Antonijevec IA, Steiger A 1999 Effects of growth hormone-releasing peptide-6 on the nocturnal secretion of GH, ACTH and cortisol and on the sleep EEG in man: role of routes of administration. *J Neuroendocrinol* 11:473–478
377. Frieboes RM, Murck H, Maier P, Schier T, Holsboer F, Steiger A 1995 Growth hormone-releasing peptide-6 stimulates sleep, growth hormone, ACTH and cortisol release in normal man. *Neuroendocrinology* 61:584–589
378. Moreno-Reyes R, Kerkhofs M, L'Hermite-Baleriaux M, Thorner MO, Van Cauter E, Copinschi G 1998 Evidence against a role for the growth hormone-releasing peptide axis in human slow-wave sleep regulation. *Am J Physiol* 274:E779–E784
379. Weikel JC, Wichniak A, Ising M, Brunner H, Friess E, Held K, Mathias S, Schmid DA, Uhr M, Steiger A 2003 Ghrelin promotes slow-wave sleep in humans. *Am J Physiol Endocrinol Metab* 284:E407–E415
380. Hayashida T, Nakahara K, Mondal MS, Date Y, Nakazato M, Kojima M, Kangawa K, Murakami N 2002 Ghrelin in neonatal rats: distribution in stomach and its possible role. *J Endocrinol* 173:239–245
381. Lee HM, Wang G, Englander EW, Kojima M, Greeley Jr GH 2002 Ghrelin, a new gastrointestinal endocrine peptide that stimulates insulin secretion: enteric distribution, ontogeny, influence of endocrine, and dietary manipulations. *Endocrinology* 143:185–190
382. Coulie BJ, Miller LJ 2001 Identification of motilin-related peptide. *Gastroenterology* 120:588–589
383. Bjorkqvist M, Dornonville de la Cour C, Zhao C, Gagnemo-Persson R, Hakanson R, Norlen P 2002 Role of gastrin in the development of gastric mucosa, ECL cells and A-like cells in newborn and young rats. *Regul Pept* 108:73–82
384. Kaiya H, Van der Geyten S, Kojima M, Hosoda H, Kitajima Y, Matsumoto M, Geelissen S, Darras VM, Kangawa K 2002 Chicken ghrelin: purification, cDNA cloning, and biological activity. *Endocrinology* 143:3454–3463
385. Sakata I, Tanaka T, Matsubara M, Yamazaki M, Tani S, Hayashi Y, Kangawa K, Sakai T 2002 Postnatal changes in ghrelin mRNA expression and in ghrelin-producing cells in the rat stomach. *J Endocrinol* 174:463–471
386. Unniappan S, Lin X, Cervini L, Rivier J, Kaiya H, Kangawa K, Peter RE 2002 Goldfish ghrelin: molecular characterization of the complementary deoxyribonucleic acid, partial gene structure and evidence for its stimulatory role in food intake. *Endocrinology* 143:4143–4146
387. Depoortere I 2001 Motilin and motilin receptors: characterization and functional significance. *Verh K Acad Geneesk Belg* 63:511–529
388. Djurhuus CB, Hansen TK, Holst JJ, Schmitz O 2002 Feast or famine: are GLP-1 and ghrelin secretion intertwined? *Horm Metab Res* 34:353–354
389. Djurhuus CB, Hansen TK, Gravholt C, Orskov L, Hosoda H, Kangawa K, Jorgensen JO, Holst JJ, Schmitz O 2002 Circulating levels of ghrelin and GLP-1 are inversely related during glucose ingestion. *Horm Metab Res* 34:411–413
390. Murakami N, Hayashida T, Kuroiwa T, Nakahara K, Ida T, Mondal MS, Nakazato M, Kojima M, Kangawa K 2002 Role for central ghrelin in food intake and secretion profile of stomach ghrelin in rats. *J Endocrinol* 174:283–288
391. Sibilia V, Pagani F, Guidobono F, Locatelli V, Torsello A, Deghenghi R, Netti C 2002 Evidence for a central inhibitory role of growth hormone secretagogues and ghrelin on gastric acid secretion in conscious rats. *Neuroendocrinology* 75:92–97
392. Fujino K, Inui A, Asakawa A, Kihara N, Fujimura M, Fujimiya M 2003 Ghrelin induces fasted motor activity of the gastrointestinal tract in conscious fed rats. *J Physiol* 550:227–240
393. Adeghate E, Ponery AS 2002 Ghrelin stimulates insulin secretion from the pancreas of normal and diabetic rats. *J Neuroendocrinol* 14:555–560
394. Corbetta S, Peracchi M, Cappiello V, Lania A, Lauri E, Vago L, Beck-Peccoz P, Spada A 2003 Circulating ghrelin levels in patients with pancreatic and gastrointestinal neuroendocrine tumors: identification of one pancreatic ghrelinoma. *J Clin Endocrinol Metab* 88:3117–3120
395. Wierup N, Svensson H, Mulder H, Sundler F 2002 The ghrelin cell: a novel developmentally regulated islet cell in the human pancreas. *Regul Pept* 107:63–69
396. Pagotto U, Gambineri A, Vicennati V, Heiman ML, Tschop M, Pasquali R 2002 Plasma ghrelin, obesity and the polycystic ovary syndrome: correlation with insulin resistance and androgen levels. *J Clin Endocrinol Metab* 87:5625–5629
397. Caixas A, Bashore C, Nash W, Pi-Sunyer F, Laferrere B 2002 Insulin, unlike food intake, does not suppress ghrelin in human subjects. *J Clin Endocrinol Metab* 87:1902
398. Arosio M, Ronchi CL, Gebbia C, Cappiello V, Beck-Peccoz P, Peracchi M 2003 Stimulatory effects of ghrelin on circulating somatostatin and pancreatic polypeptide levels. *J Clin Endocrinol Metab* 88:701–704
399. Muller AF, Janssen JA, Hofland LJ, Lamberts SW, Bidlingmaier M, Strasburger CJ, van der Lely AJ 2001 Blockade of the growth hormone (GH) receptor unmasks rapid GH-releasing peptide-6-mediated tissue-specific insulin resistance. *J Clin Endocrinol Metab* 86:590–593
400. Cryer PE, Polonsky K 1998 Glucose homeostasis and hypoglycemia

- mia. In: Wilson JD, ed. Williams textbook of endocrinology. Philadelphia: W. B. Saunders Company; 939–972
401. Murata M, Okimura Y, Iida K, Matsumoto M, Sowa H, Kaji H, Kojima M, Kangawa K, Chihara K 2002 Ghrelin modulates the downstream molecules of insulin signaling in hepatoma cells. *J Biol Chem* 277:5667–5674
 402. Cummings DE, Clement K, Purnell JQ, Vaisse C, Foster KE, Frayo RS, Schwartz MW, Basdevant A, Weigle DS 2002 Elevated plasma ghrelin levels in Prader Willi syndrome. *Nat Med* 8:643–644
 403. Del Parigi A, Tschop M, Heiman ML, Salbe AD, Vozarova B, Sell SM, Bunt JC, Tataranni PA 2002 High circulating ghrelin: a potential cause for hyperphagia and obesity in Prader-Willi syndrome. *J Clin Endocrinol Metab* 87:5461–5464
 404. Haqq AM, Farooqi IS, O'Rahilly S, Stadler DD, Rosenfeld RG, Pratt KL, LaFranchi SH, Purnell JQ 2003 Serum ghrelin levels are inversely correlated with body mass index, age, and insulin concentrations in normal children and are markedly increased in Prader-Willi syndrome. *J Clin Endocrinol Metab* 88:174–178
 405. Katugampola SD, Pallikaros Z, Davenport AP 2001 [125I-His(9)]-ghrelin, a novel radioligand for localizing GHS orphan receptors in human and rat tissue: up-regulation of receptors with atherosclerosis. *Br J Pharmacol* 134:143–149
 406. de Gennaro Colonna V, Rossoni G, Bernareggi M, Muller EE, Berti F 1997 Hexarelin, a growth hormone-releasing peptide, discloses protectant activity against cardiovascular damage in rats with isolated growth hormone deficiency. *Cardiologia* 42:1165–1172
 407. de Gennaro Colonna V, Rossoni G, Bernareggi M, Muller EE, Berti F 1997 Cardiac ischemia and impairment of vascular endothelium function in hearts from growth hormone-deficient rats: protection by hexarelin. *Eur J Pharmacol* 334:201–207
 408. Rossoni G, de Gennaro Colonna V, Bernareggi M, Polvani GL, Muller EE, Berti F 1998 Protectant activity of hexarelin or growth hormone against posts ischemic ventricular dysfunction in hearts from aged rats. *J Cardiovasc Pharmacol* 32:260–265
 409. Locatelli V, Rossoni G, Schweiger F, Torsello A, De Gennaro Colonna V, Bernareggi M, Deghenghi R, Muller EE, Berti F 1999 Growth hormone-independent cardioprotective effects of hexarelin in the rat. *Endocrinology* 140:4024–4031
 410. Weekers F, Van Herck E, Isgaard J, Van den Berghe G 2000 Pretreatment with growth hormone-releasing peptide-2 directly protects against the diastolic dysfunction of myocardial stunning in an isolated, blood-perfused rabbit heart model. *Endocrinology* 141:3993–3999
 411. Tivesten A, Bollano E, Caidahl K, Kujacic V, Sun XY, Hedner T, Hjalmarson A, Bengtsson BA, Isgaard J 2000 The growth hormone secretagogue hexarelin improves cardiac function in rats after experimental myocardial infarction. *Endocrinology* 141:60–66
 412. King MK, Gay DM, Pan LC, McElmurray III JH, Hendrick JW, Pirie C, Morrison A, Ding C, Mukherjee R, Spinale FG 2001 Treatment with a growth hormone secretagogue in a model of developing heart failure: effects on ventricular and myocyte function. *Circulation* 103:308–313
 413. Bedendi I, Gallo MP, Malan D, Levi RC, Alloati G 2001 Role of endothelial cells in modulation of contractility induced by hexarelin in rat ventricle. *Life Sci* 69:2189–2201
 414. Torsello A, Bresciani E, Rossoni G, Avallone R, Tulipano G, Cocchi D, Bulgarelli I, Deghenghi R, Berti F, Locatelli V 2003 Ghrelin plays a minor role in the physiological control of cardiac function in the rat. *Endocrinology* 144:1787–1792
 415. Ong H, Bodart V, McNicoll N, Lamontagne D, Bouchard JF 1998 Binding sites for growth hormone-releasing peptide. *Growth Horm IGF Res* 8(Suppl B):137–140
 416. Nagaya N, Uematsu M, Kojima M, Date Y, Nakazato M, Okumura H, Hosoda H, Shimizu W, Yamagishi M, Oya H, Koh H, Yutani C, Kangawa K 2001 Elevated circulating level of ghrelin in cachexia associated with chronic heart failure: relationships between ghrelin and anabolic/catabolic factors. *Circulation* 104:2034–2038
 417. Bisi G, Podio V, Valetto MR, Broglio F, Bertuccio G, Aimaretti G, Pelosi E, Del Rio G, Muccioli G, Ong H, Bughen MF, Deghenghi R, Ghigo E 1999 Cardiac effects of hexarelin in hypopituitary adults. *Eur J Pharmacol* 381:31–38
 418. Bisi G, Podio V, Valetto MR, Broglio F, Bertuccio G, Del Rio G, Arvat E, Bughen MF, Deghenghi R, Muccioli G, Ong H, Ghigo E 1999 Acute cardiovascular and hormonal effects of GH and hexarelin, a synthetic GH-releasing peptide, in humans. *J Endocrinol Invest* 22:266–272
 419. Broglio F, Benso A, Valetto MR, Gottero C, Quaranta L, Podio V, Arvat E, Bobbio M, Bisi G, Ghigo E 2001 Growth hormone-independent cardiotropic activities of growth hormone-releasing peptides in normal subjects, in patients with growth hormone deficiency, and in patients with idiopathic or ischemic dilated cardiomyopathy. *Endocrine* 14:105–108
 420. Imazio M, Bobbio M, Broglio F, Benso A, Podio V, Valetto MR, Bisi G, Ghigo E, Trevisan GP 2002 GH-independent cardiotropic activities of hexarelin in patients with severe left ventricular dysfunction due to dilated and ischemic cardiomyopathy. *Eur J Heart Fail* 4:185–191
 421. Makino Y, Hosoda H, Shibata K, Makino I, Kojima M, Kangawa K, Kawarabayashi T 2002 Alteration of plasma ghrelin levels associated with the blood pressure in pregnancy. *Hypertension* 39:781–784
 422. Broglio F, Guarracino F, Benso A, Gottero C, Prodam F, Granata R, Avogadri E, Muccioli G, Deghenghi R, Ghigo E 2002 Effects of acute hexarelin administration on cardiac performance in patients with coronary artery disease during by-pass surgery. *Eur J Pharmacol* 448:193–200
 423. Enomoto M, Nagaya N, Uematsu M, Okumura H, Nakagawa E, Ono F, Hosoda H, Oya H, Kojima M, Kanmatsuse K, Kangawa K 2003 Cardiovascular and hormonal effects of subcutaneous administration of ghrelin, a novel growth hormone-releasing peptide, in healthy humans. *Clin Sci (Lond)* 105:431–435
 424. Cassoni P, Papotti M, Catapano F, Ghe C, Deghenghi R, Ghigo E, Muccioli G 2000 Specific binding sites for synthetic growth hormone secretagogues in non-tumoral and neoplastic human thyroid tissue. *J Endocrinol* 165:139–146
 425. Cassoni P, Muccioli G, Marrocco T, Volante M, Allia E, Ghigo E, Deghenghi R, Papotti M 2002 Cortistatin-14 inhibits cell proliferation of human thyroid carcinoma cell lines of both follicular and parafollicular origin. *J Endocrinol Invest* 25:362–368
 426. Ghe C, Cassoni P, Catapano F, Marrocco T, Deghenghi R, Ghigo E, Muccioli G, Papotti M 2002 The antiproliferative effect of synthetic peptidyl GH secretagogues in human CALU-1 lung carcinoma cells. *Endocrinology* 143:484–491
 427. Andreis PG, Malendowicz LK, Trejter M, Neri G, Spinazzi R, Rossi GP, Nussdorfer GG 2003 Ghrelin and growth hormone secretagogue receptor are expressed in the rat adrenal cortex: evidence that ghrelin stimulates the growth, but not the secretory activity of adrenal cells. *FEBS Lett* 536:173–179
 428. Pettersson I, Muccioli G, Granata R, Deghenghi R, Ghigo E, Ohlsson C, Isgaard J 2002 Natural (ghrelin) and synthetic (hexarelin) GH secretagogues stimulate H9c2 cardiomyocyte cell proliferation. *J Endocrinol* 175:201–209
 429. Hanada T, Toshinai K, Kajimura N, Nara-Ashizawa N, Tsukada T, Hayashi Y, Osuye K, Kangawa K, Matsukura S, Nakazato M 2003 Anti-cachectic effect of ghrelin in nude mice bearing human melanoma cells. *Biochem Biophys Res Commun* 301:275–279
 430. Shimizu Y, Nagaya N, Isobe T, Imazu M, Okumura H, Hosoda H, Kojima M, Kangawa K, Kohno N 2003 Increased plasma ghrelin level in lung cancer cachexia. *Clin Cancer Res* 9:774–778
 431. Shepherd BS, Eckert SM, Parhar IS, Vijayan MM, Wakabayashi I, Hirano T, Grau EG, Chen TT 2000 The hexapeptide KP-102 (D-ala-D-beta-Nal-ala-trp-D-phe-lys-NH(2)) stimulates growth hormone release in a cichlid fish (*Oreochromis mossambicus*). *J Endocrinol* 167:R7–R10
 432. Kaiya H, Kojima M, Hosoda H, Koda A, Yamamoto K, Kitajima Y, Matsumoto M, Minamitake Y, Kikuyama S, Kangawa K 2001 Bullfrog ghrelin is modified by n-octanoic acid at its third threonine residue. *J Biol Chem* 276:40441–40448
 433. Nieminen P, Mustonen AM, Lindstrom-Seppa P, Asikainen J, Mussalo-Rauhamaa H, Kukkonen JV 2002 Phytosterols act as endocrine and metabolic disruptors in the European polecat (*Mustela putorius*). *Toxicol Appl Pharmacol* 178:22–28
 434. Ahmed S, Harvey S 2002 Ghrelin: a hypothalamic GH-releasing factor in domestic fowl (*Gallus domesticus*). *J Endocrinol* 172:117–125

435. **Mustonen AM, Nieminen P, Hyvarinen H** 2002 Leptin, ghrelin, and energy metabolism of the spawning burbot (*Lota lota*, L.). *J Exp Zool* 293:119–126
436. **Galas L, Chartrel N, Kojima M, Kangawa K, Vaudry H** 2002 Immunohistochemical localization and biochemical characterization of ghrelin in the brain and stomach of the frog *Rana esculenta*. *J Comp Neurol* 450:34–44
437. **Mustonen AM, Nieminen P, Hyvarinen H** 2002 Melatonin and the wintering strategy of the tundra vole, *Microtus oeconomus*. *Zoolog Sci* 19:683–687
438. **Sugino T, Hasegawa Y, Kikkawa Y, Yamaura J, Yamagishi M, Kurose Y, Kojima M, Kangawa K, Terashima Y** 2002 A transient ghrelin surge occurs just before feeding in a scheduled meal-fed sheep. *Biochem Biophys Res Commun* 295:255–260
439. **Heiman ML, Tschop M** 2001 Ghrelin provides the calories that growth hormone requires for growth and repair. *Topic Endocrinol Suppl* 2:39–40
440. **Lawrence CB, Snape AC, Baudoin FM, Luckman SM** 2002 Acute central ghrelin and GH secretagogues induce feeding and activate brain appetite centers. *Endocrinology* 143:155–162
441. **James PT, Leach R, Kalamara E, Shayeghi M** 2001 The worldwide obesity epidemic. *Obes Res* 9(Suppl 4):228S–233S
442. **Ukkola O, Ravussin E, Jacobson P, Perusse L, Rankinen T, Tschop M, Heiman ML, Leon AS, Rao DC, Skinner JS, Wilmore JH, Sjostrom L, Bouchard C** 2002 Role of ghrelin polymorphisms in obesity based on three different studies. *Obes Res* 10:782–791
443. **Sorensen TI** 2000 The changing lifestyle in the world. Body weight and what else? *Diabetes Care* 23(Suppl 2):B1–B4
444. **Tschop M, Weyer C, Tataranni PA, Devanarayan V, Ravussin E, Heiman ML** 2001 Circulating ghrelin levels are decreased in human obesity. *Diabetes* 50:707–709
445. **Hansen TK, Dall R, Hosoda H, Kojima M, Kangawa K, Christiansen JS, Jorgensen JO** 2002 Weight loss increases circulating levels of ghrelin in human obesity. *Clin Endocrinol (Oxf)* 56:203–206
446. **Otto B, Cuntz U, Fruehauf E, Wawarta R, Folwaczny C, Riepl RL, Heiman ML, Lehnert P, Fichter M, Tschop M** 2001 Weight gain decreases elevated plasma ghrelin concentrations of patients with anorexia nervosa. *Eur J Endocrinol* 145:669–673
447. **Wisse BE, Frayo RS, Schwartz MW, Cummings DE** 2001 Reversal of cancer anorexia by blockade of central melanocortin receptors in rats. *Endocrinology* 142:3292–3301
448. **Bizzarri C, Rigamonti AE, Giannone G, Berardinelli R, Cella SG, Cappa M, Muller EE** 2004 Maintenance of a normal meal-induced decrease in plasma ghrelin levels in children with Prader-Willi syndrome. *Horm Metab Res* 36:164–169
449. **Burman P, Ritzen EM, Lindgren AC** 2001 Endocrine dysfunction in Prader-Willi syndrome: a review with special reference to GH. *Endocr Rev* 22:787–799
450. **Considine RV, Sinha MK, Heiman ML, Kriauciunas A, Stephens TW, Nyce MR, Ohannesian JP, Marco CC, McKee LJ, Bauer TL** 1996 Serum immunoreactive-leptin concentrations in normal-weight and obese humans. *N Engl J Med* 334:292–295
451. **Campbell RK, White Jr JR** 2002 Insulin therapy in type 2 diabetes. *J Am Pharm Assoc (Wash)* 42:602–611
452. **Jequier E** 2002 Pathways to obesity. *Int J Obes Relat Metab Disord* 26(Suppl 2):S12–S17
453. **Nargund RP, Patchett AA, Bach MA, Murphy MG, Smith RG** 1998 Peptidomimetic growth hormone secretagogues. Design considerations and therapeutic potential. *J Med Chem* 41:3103–3127
454. **Bowers CY, Granda-Ayala R** 2001 Growth hormone/insulin-like growth factor-1 response to acute and chronic growth hormone-releasing peptide-2, growth hormone-releasing hormone 1–44NH₂ and in combination in older men and women with decreased growth hormone secretion. *Endocrine* 14:79–86
455. **Roumi M, Kwong E, Deghenghi R, Locatelli V, Marleau S, Du Souich P, Beliveau R, Ong H** 2001 Permeability of the peptidic GH secretagogues hexarelin and EP 51389, across rat jejunum. *Peptides* 22:1129–1138
456. **Ankersen M, Hansen TK, Ahnfelt-Ronne I, Kappelgaard AM** 1999 Growth hormone secretagogues: recent advances and applications. *Drug Discov Today* 4:497–506
457. **Svensson J** 1999 Growth hormone secretagogues as therapeutic agents. *Growth Horm IGF Res* 9(Suppl A):107–109
458. **Penalva A, Baldelli R, Camina JP, Cerro AL, Micic D, Tamburrano G, Dieguez C, Casanueva FF** 2001 Physiology and possible pathology of growth hormone secretagogues. *J Pediatr Endocrinol Metab* 14(Suppl 5):1207–1212
459. **Bercu BB, Walker RF** 1997 Growth hormone secretagogues in children with altered growth. *Acta Paediatr Suppl* 423:102–106
460. **Fuh VL, Bach MA** 1998 Growth hormone secretagogues: mechanism of action and use in aging. *Growth Horm IGF Res* 8:13–20
461. **Khorrani O** 2001 Use of growth hormone and growth hormone secretagogues in aging: help or harm. *Clin Obstet Gynecol* 44:893–901
462. **Van den Berghe G** 1999 Growth hormone secretagogues in critical illness. *Horm Res* 51(Suppl 3):21–28
463. **Ghigo E, Aimaretti G, Arvat E, Camanni F** 2001 Growth hormone-releasing hormone combined with arginine or growth hormone secretagogues for the diagnosis of growth hormone deficiency in adults. *Endocrine* 15:29–38
464. **Baldelli R, Otero XL, Camina JP, Gualillo O, Popovic V, Dieguez C, Casanueva FF** 2001 Growth hormone secretagogues as diagnostic tools in disease states. *Endocrine* 14:95–99
465. **Shalet SM, Toogood A, Rahim A, Brennan BM** 1998 The diagnosis of growth hormone deficiency in children and adults. *Endocr Rev* 19:203–223
466. **Root AW, Diamond Jr FB** 2000 Regulation and clinical assessment of growth hormone secretion. *Endocrine* 12:137–145
467. **Torsello A, Rossoni G, Locatelli V, de Gennaro Colonna V, Bernareggi M, Francolini M, Muller EE, Berti F** 2001 Hexarelin, but not growth hormone, protects heart from damage induced in vitro by calcium deprivation replenishment. *Endocrine* 14:109–112
468. **Hickey G, Jacks T, Judith F, Taylor J, Schoen WR, Krupa D, Cunningham P, Clark J, Smith RG** 1994 Efficacy and specificity of L-692,429, a novel nonpeptidyl growth hormone secretagogue, in beagles. *Endocrinology* 134:695–701
469. **Schoen WR, Pisano JM, Prendergast K, Wyvratt Jr MJ, Fisher MH, Cheng K, Chan WW, Butler B, Smith RG, Ball RG** 1994 A novel 3-substituted benzazepinone growth hormone secretagogue (L-692,429). *J Med Chem* 37:897–906
470. **Pihoker C, Middleton R, Reynolds GA, Bowers CY, Badger TM** 1995 Diagnostic studies with intravenous and intranasal growth hormone-releasing peptide-2 in children of short stature. *J Clin Endocrinol Metab* 80:2987–2992
471. **Tuipakov AN, Brook CG, Pringle PJ, Peterkova VA, Volevodz NN, Bowers CY** 1995 GH responses to intravenous bolus infusions of GH releasing hormone and GH releasing peptide 2 separately and in combination in adult volunteers. *Clin Endocrinol (Oxf)* 43:347–350
472. **Tuipakov AN, Bulatov AA, Peterkova VA, Elizarova GP, Volevodz NN, Bowers CY** 1995 Growth hormone (GH)-releasing effects of synthetic peptide GH-releasing peptide-2 and GH-releasing hormone (1–29NH₂) in children with GH insufficiency and idiopathic short stature. *Metabolism* 44:1199–1204
473. **Chen C, Clarke IJ** 1995 Effects of growth hormone-releasing peptide-2 (GHRP-2) on membrane Ca²⁺ permeability in cultured ovine somatotrophs. *J Neuroendocrinol* 7:179–186
474. **Sawada H, Sugihara H, Onose H, Minami S, Shibasaki T, Wakabayashi I** 1994 Effect of D-Ala-D-β Nal-Ala-Trp-D-Phe-Lys-NH₂ (KP-102) on GH secretion in urethan-anesthetized rats. *Regul Pept* 53:195–201
475. **Arvat E, Gianotti L, Grottoli S, Imbimbo BP, Lenaerts V, Deghenghi R, Camanni F, Ghigo E** 1994 Arginine and growth hormone-releasing hormone restore the blunted growth hormone-releasing activity of hexarelin in elderly subjects. *J Clin Endocrinol Metab* 79:1440–1443
476. **Deghenghi R, Cananzi MM, Torsello A, Battisti C, Muller EE, Locatelli V** 1994 GH-releasing activity of hexarelin, a new growth hormone releasing peptide, in infant and adult rats. *Life Sci* 54:1321–1328
477. **Imbimbo BP, Mant T, Edwards M, Amin D, Dalton N, Boutignon F, Lenaerts V, Wuthrich P, Deghenghi R** 1994 Growth hormone-releasing activity of hexarelin in humans. A dose-response study. *Eur J Clin Pharmacol* 46:421–425

478. **Laron Z, Frenkel J, Gil-Ad I, Klinger B, Lubin E, Wuthrich P, Boutignon F, Lengerts V, Deghenghi R** 1994 Growth hormone releasing activity by intranasal administration of a synthetic hexapeptide (hexarelin). *Clin Endocrinol (Oxf)* 41:539–541
479. **Fairhall KM, Mynett A, Smith RG, Robinson IC** 1995 Consistent GH responses to repeated injection of GH-releasing hexapeptide (GHRP-6) and the non-peptide GH secretagogue, L-692,585. *J Endocrinol* 145:417–426
480. **Gentry LR, Thompson Jr DL, Stelzer AM** 2002 Responses of seasonally anovulatory mares to daily administration of thyrotropin-releasing hormone and(or) gonadotropin-releasing hormone analog. *J Anim Sci* 80:208–213
481. **Kennedy SR, Thompson Jr DL, Pruett HE, Burns PJ, Deghenghi R** 2002 Growth hormone response to a novel growth hormone-releasing tripeptide in horses: interaction with gonadotropin-releasing hormone, thyrotropin-releasing hormone, and sulpiride. *J Anim Sci* 80:744–750
482. **Svensson J, Lall S, Dickson SL, Bengtsson BA, Romer J, Ahnfelt-Ronne I, Ohlsson C, Jansson JO** 2000 The GH secretagogues ipamorelin and GH-releasing peptide-6 increase bone mineral content in adult female rats. *J Endocrinol* 165:569–577
483. **Hansen BS, Raun K, Nielsen KK, Johansen PB, Hansen TK, Peschke B, Lau J, Andersen PH, Ankersen M** 1999 Pharmacological characterisation of a new oral GH secretagogue, NN703. *Eur J Endocrinol* 141:180–189
484. **Peschke B, Hansen BS** 1999 New growth hormone secretagogues: C-terminal modified sulfonamide-analogues of NN703. *Bioorg Med Chem Lett* 9:1295–1298
485. **Ankersen M, Kramer NK, Kruse HT, Raun K, Sehested HB** 2000 Growth hormone secretagogues derived from NN703 with hydrazides c-terminal. *Eur J Med Chem* 35:487–497
486. **Nagamine J, Nagata R, Seki H, Nomura-Akimaru N, Ueki Y, Kumagai K, Taiji M, Noguchi H** 2001 Pharmacological profile of a new orally active growth hormone secretagogue, SM-130686. *J Endocrinol* 171:481–489

Endocrine Reviews is published bimonthly by The Endocrine Society (<http://www.endo-society.org>), the foremost professional society serving the endocrine community.