

# Fungal Signature in the Gut Microbiota of Pediatric Patients With Inflammatory Bowel Disease

Christel Chehoud, AB,<sup>\*,†</sup> Lindsey G. Albenberg, DO,<sup>‡</sup> Colleen Judge, AB,<sup>‡</sup> Christian Hoffmann, PhD,<sup>†</sup> Stephanie Grunberg, BA,<sup>†</sup> Kyle Bittinger, PhD,<sup>†</sup> Robert N. Baldassano, MD,<sup>‡</sup> James D. Lewis, MD,<sup>\*</sup> Frederic D. Bushman, PhD,<sup>†</sup> and Gary D. Wu, MD<sup>\*</sup>

**Background:** Inflammatory bowel disease (IBD) involves dysregulation of mucosal immunity in response to environmental factors such as the gut microbiota. The bacterial microbiota is often altered in IBD, but the connection to disease is not fully clarified and gut fungi have recently been suggested to play a role as well. In this study, we compared microbes from all 3 domains of life—bacteria, archaea, and eukaryota—in pediatric patients with IBD and healthy controls.

**Methods:** A stool sample was collected from patients with IBD (n = 32) or healthy control subjects (n = 90), and bacterial, archaeal, and fungal communities were characterized by deep sequencing of rRNA gene segments specific to each domain.

**Results:** Patients with IBD (Crohn's disease or ulcerative colitis) had lower bacterial diversity and distinctive fungal communities. Two lineages annotating as *Candida* were significantly more abundant in patients with IBD ( $P = 0.0034$  and  $P = 0.00038$ , respectively), whereas a lineage annotating as *Cladosporium* was more abundant in healthy subjects ( $P = 0.0025$ ). There were no statistically significant differences in archaea, which were rare in pediatric samples compared with those from adults.

**Conclusions:** Pediatric IBD is associated with reduced diversity in both fungal and bacterial gut microbiota. Specific *Candida* taxa were found to be increased in abundance in the IBD samples. These data emphasize the potential importance of fungal microbiota signatures as biomarkers of pediatric IBD, supporting their possible role in disease pathogenesis.

(*Inflamm Bowel Dis* 2015;21:1948–1956)

**Key Words:** microbiota, IBD, fungus, bacteria, DNA

The 3 domains of life—bacteria, archaea, and eukaryota—are all represented in human gut communities.<sup>1–5</sup> Numerous disorders, both intestinal and systemic, have been associated with alterations in the microbial community structure, termed

“dysbiosis.”<sup>6–8</sup> The dysbiotic bacterial microbiota has been extensively characterized for the inflammatory bowel diseases (IBD) and *Clostridium difficile* infection, although the composition of the archaea and eukaryota domains and their interaction with bacteria have not been studied in detail. The pathogenesis of IBD is associated with an inappropriate and persistent inflammatory response to the commensal gut microbiota in genetically susceptible individuals. In animal studies, dysbiosis has been associated with the development of intestinal inflammation.<sup>6,8,9</sup> Many of the genetic risk alleles for IBD involve regulation of innate immune responses that protect the host from bacterial invasion or that regulate the adaptive immune system (reviewed in<sup>10,11</sup>). In Crohn's disease (CD), the phylum Firmicutes is commonly reduced in proportional abundance,<sup>12–17</sup> notably *Faecalibacterium prausnitzii*<sup>18–20</sup> and members of the Proteobacteria phylum, such as *Enterobacteriaceae*,<sup>21,22</sup> including *Escherichia coli*,<sup>7,17,23</sup> are commonly increased.

The importance of fungi in the human gut to health or disease is not fully understood.<sup>2,24</sup> Fungi, such as *Aspergillus*, *Histoplasma*, and *Cryptococcus* are known to cause pathogenic intestinal infections. Fungi are also part of the commensal gut microbiota. Increases in gut *Candida* species are hypothesized to cause systemic yeast infections in immunocompromised patients by translocation through the intestinal barrier.<sup>25</sup>

Supplemental digital content is available for this article. Direct URL citations appear in the printed text and are provided in the HTML and PDF versions of this article on the journal's Web site (www.ibdjournal.org).

Received for publication February 18, 2015; Accepted March 24, 2015.

From the <sup>\*</sup>Division of Gastroenterology, Perelman School of Medicine, The University of Pennsylvania, Philadelphia, Pennsylvania; <sup>†</sup>Department of Microbiology, Perelman School of Medicine, The University of Pennsylvania, Philadelphia, Pennsylvania; and <sup>‡</sup>Division of Gastroenterology, Hepatology, and Nutrition, The Children's Hospital of Philadelphia, Philadelphia, Pennsylvania.

Supported by Project UH2DK083981; R01 GM103591; the Penn Center for Molecular Studies in Digestive and Liver Disease including the Molecular Biology/Gene Expression Core (P30 DK050306); The Joint Penn-CHOP Center for Digestive, Liver, and Pancreatic Medicine; S10RR024525; UL1RR024134, and K24-DK078228; and the University of Pennsylvania Center for AIDS Research (CFAR) P30 AI 045008.

The authors have no conflicts of interest to disclose.

C. Chehoud and L. G. Albenberg contributed equally to this manuscript.

Reprints: Gary D. Wu, MD, 915 BRB II/III, 421 Curie Boulevard, Perelman School of Medicine, University of Pennsylvania, Philadelphia, PA 19104 (e-mail: gdwu@mail.med.upenn.edu).

Copyright © 2015 Crohn's & Colitis Foundation of America, Inc.

DOI 10.1097/MIB.0000000000000454

Published online 16 June 2015.

Fungal–bacterial interactions are just beginning to be described,<sup>1,5,6,26–28</sup> and this may be important in IBD.<sup>2</sup>

Several lines of evidence link fungi and IBD. Innate immune receptor activation by fungi may augment the development of colitis. The main pattern recognition receptors for fungi include dectin-1, dectin-2, DC-SIGN, mannose receptor, and mannose-binding lectin.<sup>29</sup> Dectin-1 is a C-type lectin receptor, which recognizes  $\beta$ -glucans in the fungal cell wall. A recent study<sup>30</sup> demonstrated that mice lacking dectin-1 had increased susceptibility to chemically induced colitis because of their altered responses to indigenous fungi. A polymorphism in the gene encoding dectin-1 (*CLEC7A*) was subsequently associated with a severe form of ulcerative colitis (UC) in humans.<sup>30</sup> There may also be a relationship between high dietary concentrations of yeast and increased disease activity in patients with CD.<sup>31</sup> Treatment with fluconazole, an antifungal, may reduce inflammation in animal models of colitis and in patients with IBD,<sup>32</sup> and elevated levels of *Saccharomyces cerevisiae* antibodies are a biomarker for CD.<sup>33</sup> Finally, preliminary studies using denaturing gradient gel electrophoresis suggest that there may be alterations in gut fungal populations associated with IBD.<sup>25,34</sup>

Alterations in the archaeal microbiota may also be relevant to IBD. Methane production from archaea has been shown to be altered in patients with IBD.<sup>35</sup> Additionally, the syntrophic interaction between archaea and fermentative bacteria leading to the increase in short-chain fatty acids production<sup>36</sup> may have an impact on mucosal immunity through the impact of short-chain fatty acids on T regulatory cells and immune tolerance.<sup>37</sup> Studies of a modest number of subjects begin to suggest that fungi may be dysbiotic in IBD,<sup>34</sup> as well as bacteria. In this study, we use deep sequencing of rRNA gene tags to characterize the composition of the bacterial, fungal, and archaeal microbiota in pediatric patients with IBD (n = 32) and healthy controls (n = 90), revealing a distinctive signature in the mycobiome.

## METHODS

### Subjects

All subjects studied were from the Philadelphia area and <21 years of age (see Table, Supplemental Digital Content 1, <http://links.lww.com/IBD/A909>). Subjects provided written consent or, when appropriate, assent. Subjects were excluded if they had been treated with antibiotics or probiotics within the 2 weeks before sample collection, if there was presence of an ostomy, or if they had been treated with supplemental nutrition (total parenteral nutrition, enteral nutritional therapy, or other nutritional supplements) accounting for more than 50% of the total caloric intake for the 1 week before sample collection. Pediatric Crohn's Disease Activity Index<sup>38</sup> or Pediatric Ulcerative Colitis Activity Index<sup>39</sup> was calculated as described. Stool samples were collected between February and September 2012 and kept frozen at  $-80^{\circ}\text{C}$  until they were processed for DNA extraction. The sequence samples obtained from the healthy

pediatric and adult subjects and used as controls are described elsewhere.<sup>5,40</sup> Briefly, healthy volunteers were screened to be free from any chronic disease, to have a normal bowel movement frequency, and to have a body mass index between 18.5 and 35 kg/m<sup>2</sup>. One stool sample was provided per subject and kept frozen at  $-80^{\circ}\text{C}$  until processed for DNA extraction.

### DNA Isolation

DNA was isolated from approximately 200 mg of stool using the PSP Spin Stool DNA Plus Kit (Cat #10381102; Invitex, Berlin, Germany) as per the manufacturer's instructions.

### 16S rDNA Gene and ITS1 Region Gene Sequencing

Isolated DNA was quantified using the PicoGreen system, and 50 ng of DNA was amplified in each polymerase chain reaction (PCR). Primers were barcoded to label each sample as described previously.<sup>41,42</sup> PCRs were performed in triplicate using AccuPrime (Invitrogen, Carlsbad, CA). Each reaction contained 50 ng of DNA and 10 pM of each primer. Primers annealing to the V1V2 region of the 16S bacterial gene were used for amplification. The PCR protocol for 16S amplicons was described previously.<sup>43</sup> The development of the archaeal-specific 16S rDNA primers and ITS1 fungal primers and PCR cycling conditions are described in Ref. 42. Amplified 16S rDNA and ITS1 fragments were purified using a 1:1 volume of Agencourt AmPure XP beads (Beckman-Coulter Brea, CA). The purified products from the stool samples were pooled in equal amounts and analyzed by pyrosequencing using the Roche/454 Genome Sequencer Junior. DNA pools were separated by the amplicon type. DNA-free water was subjected to the same amplification and purification procedure, and no DNA product was observed in agarose gels. Sequences of oligonucleotides used in this study are in Table, Supplemental Digital Content 2, <http://links.lww.com/IBD/A910>.

### Sequence Analysis

Sequence data were processed using QIIME,<sup>44</sup> augmented by the R package QIIMER (<http://cran.r-project.org/web/packages/qiimer>). Taxonomy was assigned to the sequences using Ribosomal Database Project for 16S<sup>45</sup> and the UNITE database for ITS. Further information on methods can be found in the Methods, Supplemental Digital Content 3, <http://links.lww.com/IBD/A911>.

We fit a random forest model to predict health versus disease (IBD) using 16S bacterial operational taxonomic units (OTUs), ITS fungal OTUs, or a combination both. A total of 1000 bootstrapped iterations were performed to obtain an estimate of the misclassification rate. The classification error rate was compared with guessing, e.g., if the data set consisted of 32 subjects with IBD and 68 healthy subjects, a sample would be randomly classified as a sample from a subject with IBD 32% of the time and as a sample from a healthy subject 68% of the time.

Bacterial OTUs with greater than 100 sequences across all IBD samples (128 OTUs) were correlated with ITS fungal OTUs

with greater than 100 sequences across all IBD samples (27 OTUs). *P* values were calculated using a 2-sided Pearson correlation test. Bacterial OTUs with at least 1 correlation to a fungal OTU producing a Bonferroni-corrected *P* value less than 0.05 were displayed on the final heatmap.

## RESULTS

### Patient Cohort Studied

The bacterial component of the microbiome has been studied extensively in IBD and is known to be dysbiotic.<sup>6,8,9,46</sup> Thus, in this study, we sought to assess effects on the fungal and archaeal components of the microbiome. A cross-sectional analysis was performed whereby a single stool sample was obtained from pediatric patients (3–21 years of age) with CD, UC, or indeterminate colitis (IC) (*n* = 32). The diagnosis of IBD was based on endoscopic, radiologic, laboratory, and clinical findings. Clinical phenotypes of all patients and their therapies are described in Table, Supplemental Digital Content 1, <http://links.lww.com/IBD/A909>. Microbiome sequencing results for patients with IBD were compared with results for healthy pediatric and adult subjects studied previously (*n* = 90).<sup>40</sup>

### Reduced Richness in the Intestinal Bacterial Microbiota of Patients With IBD

We first characterized the bacterial composition of the microbiota by purifying and amplifying DNA using PCR primers recognizing the V1V2 region of the 16S rRNA gene and pyrosequencing an average of 2864 reads per sample. We analyzed fecal samples from 2 patients with IC, 4 with UC, and 26 with CD (see Table, Supplemental Digital Content 1, <http://links.lww.com/IBD/A909>). Reads were clustered into OTUs at 97% sequence identity, and representative sequences were aligned to databases for taxonomic attribution. Comparison of data among the disease classes revealed few differences among groups (see Fig., Supplemental Digital Content 4, <http://links.lww.com/IBD/A912>). Most samples were dominated with *Bacteroides*. A few had Clostridia as the dominant taxon.

We compared a data set from healthy adults and children with the IBD samples.<sup>40</sup> OTU composition was compared in a pairwise fashion between samples using UniFrac, and healthy and IBD sample sets were compared with each other using PERMANOVA. We observed a clear separation between the IBD and healthy sample sets (*P* < 0.0001) (see Fig., Supplemental Digital Content 5, <http://links.lww.com/IBD/A913>).

We also investigated the diversity of the IBD samples and healthy controls because, previously, lower diversity in IBD has been reported in several studies.<sup>15</sup> We assessed diversity by calculating the Shannon Index for each sample and found that the IBD samples had significantly lower diversity compared with either healthy adult or pediatric control subjects (*P* < 0.05) (see Fig., Supplemental Digital Content 6, <http://links.lww.com/IBD/A914>).

### Comparison of Archaea in Patients With IBD and Healthy Controls

We compared the archaeal microbiota composition in the 32 IBD samples with 90 healthy controls by amplification with PCR primers selective for archaea followed by pyrosequencing and alignment to databases. Only 3 IBD samples contained detectable *Methanobrevibacter* (see Fig., Supplemental Digital Content 7, <http://links.lww.com/IBD/A915>), the major archaeal lineage in healthy adults.<sup>5</sup> Six samples had a few reads (<5 reads each) mostly matching “Unclassified Archaea.” Querying those reads against the NCBI’s nucleotide database did not provide clearer taxonomic resolution. We validated these findings by quantitative PCR targeting Archaea, which confirmed that only 3 IBD samples, Subject004\_CD, Subject006\_CD, and Subject037\_CD, had detectable archaea. There was a lower recovery of archaeal sequences from pediatric IBD samples compared with healthy adults (*P* <  $1 \times 10^{-6}$ ), but pediatric IBD patients were not significantly different from healthy children (*P* = 0.128) (see Fig., Supplemental Digital Content 8, <http://links.lww.com/IBD/A916>). This indicates that children have lower archaeal colonization than do adults and that alterations in the archaeal colonization of the gut are not related to IBD.

### Distinctive Fungal Signature in the Microbiota of Pediatric Patients With IBD

The fungal representation in the fecal samples was characterized by amplification of stool DNA with PCR primers targeting the fungal rRNA ITS region, followed by pyrosequencing using the 454/Roche platform, formation into OTUs at 95% sequence identity, and alignment to databases. The ITS amplicon has been reported to have biases in recovery of certain lineages,<sup>47</sup> but it does successfully capture a broad range of taxa.<sup>5,26,28</sup> Thirty-two subjects with IBD were compared with 90 healthy adults and children.<sup>40</sup> IBD samples had significantly lower fungal diversity than did healthy children (*P* < 0.05) (Fig. 1).

Ordination analysis based on the presence or absence of fungal species revealed a separation between healthy and IBD pediatric subjects (*P* = 0.004) (Fig. 2). Samples from healthy adults overlapped with both pediatric groups (data not shown). Ordination based on the abundance (rather than presence/absence) of each fungal species also showed separation between healthy and IBD pediatric subjects (*P* = 0.044) (see Fig., Supplemental Digital Content 9, <http://links.lww.com/IBD/A917>). A focused analysis of CD only, in which the IC and UC patients were excluded, also revealed significant separation between healthy and IBD pediatric subjects (see Fig., Supplemental Digital Content 10, <http://links.lww.com/IBD/A918>; *P* < 0.0001). Next, we investigated whether fungal representation differed in IBD and healthy control samples (Fig. 3). The most commonly observed order was Saccharomycetales, which contains the genus *Candida*. IBD samples averaged 2675 *Candida* sequences (proportionally 72.9%), whereas healthy controls averaged 1320 reads (proportionally 32.9%) (*P* = 0.0107 based on read counts). Healthy

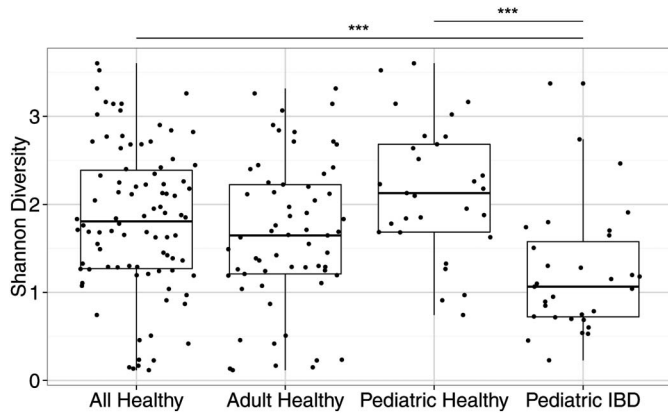


FIGURE 1. Diversity of fungal communities is decreased in patients with IBD compared with healthy subjects. The Shannon diversity index was calculated based on the OTU-level classification tables. The box plots show the distribution of diversity values for: (1) all healthy subjects, (2) only the adult healthy subjects, (3) only the pediatric healthy subjects, and (4) the pediatric IBD subjects. Each black dot represents a different subject. \*\*\* $P < 0.0005$  on the Wilcoxon test.

adults had slightly higher nonsignificant average proportions of *Candida* than did pediatric healthy subjects (1428 reads [37%] versus 1055 reads [23%];  $P = 0.535$  based on read counts).

The *Candida* reads were categorized in 97 different OTUs with the majority belonging to one OTU (GenBank ID: KP132001) (Fig. 4A). This OTU annotates as single species, which has previously been given multiple different names, including *Pichia jadinii*, *Candida utilis*, *Cyberlindnera jadinii*, *Torula yeast*, and *Candida guilliermondii* var. *nitratophila*. This OTU was significantly enriched in pediatric patients with IBD

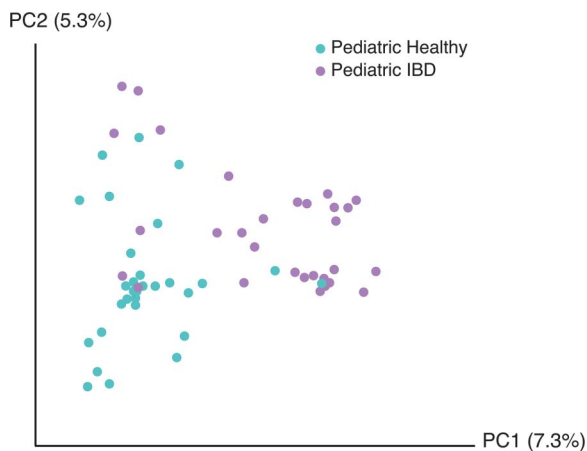


FIGURE 2. Comparison of pediatric healthy and pediatric IBD subjects' fungal community composition using principal coordinate ordination. Principal coordinate analysis was used to depict the relatedness of fungal communities based on presence or absence. The axes represent the 2 most discriminating axes using the binary Jaccard index distance metric. Pediatric healthy subjects are depicted in cyan and pediatric IBD subjects are depicted in lavender. The 2 groups clustered separately ( $P = 0.004$ ).

( $P < 0.01$  using raw reads or proportion for both pediatric IBD versus all healthy [adult and pediatric] and pediatric IBD versus pediatric healthy). A second *Candida* OTU (GenBank ID: EF197997), annotating as *Candida parapsilosis*, was also more common in the pediatric IBD samples (Fig. 4B,  $P < 0.01$  based on the number of reads). A third OTU (GenBank ID: KJ596320), annotating as *Cladosporium cladosporioides*, was more common in healthy subjects (pediatric or adult healthy versus pediatric IBD,  $P < 0.01$  based on number of reads; Fig. 4C).

### Microbial Signature for Pediatric IBD

Random forest, a supervised machine-learning algorithm, was used to generate a classifier capable of sorting IBD and healthy controls based on microbial community composition. Classifiers were developed comparing pediatric IBD with pediatric healthy (Fig. 5A), and pediatric IBD versus pooled adult, and pediatric healthy controls (Fig. 5B). Classifiers were compared that used bacterial 16S rRNA gene data only, fungal ITS sequence data only, or both.

The models successfully partitioned the pediatric samples by disease status (Fig. 5A) and partitioned all healthy controls (children and adults) from IBD children (Fig. 5B). For pediatric samples, the 16S or ITS OTUs used alone showed a median accuracy of 90% and 83%, respectively, whereas the combination of OTUs showed greater than 93% accuracy. The bacterial OTUs that could best distinguish patients with IBD from healthy controls annotated as *Bacteroides*, *Parabacteroides*, and *Faecalibacterium prausnitzii*. For fungi, the classifier was dominated by OTUs annotating as *Pichia jadinii*/*Candida utilis*. The full list of distinguishing taxa is presented in Tables, Supplemental Digital Content 11–14, <http://links.lww.com/IBD/A919>, <http://links.lww.com/IBD/A920>, <http://links.lww.com/IBD/A921>, and <http://links.lww.com/IBD/A922>.

### Bacterial and Fungal Correlations in IBD

Two-sided, Pearson tests were used to measure the correlation between bacterial and fungal OTUs across IBD samples. Of the 128 bacterial OTUs tested, 33 showed Bonferroni-corrected, significant ( $P < 0.05$ ), correlation with at least 1 fungal OTU (Fig. 6). The most commonly found fungal species in IBD subjects, *Candida* OTU KP132001, did not correlate strongly with any bacterial species. Many more significant correlations between fungal and bacterial OTUs were detected in healthy subjects (see Fig., Supplemental Digital Content 15, <http://links.lww.com/IBD/A923>). Evidently, fungal and bacterial species covary, but this was not prominently associated with the lineages implicated as important in IBD in these subjects.

## DISCUSSION

We analyzed the composition and diversity of the fungal, bacterial, and archaeal microbiota in pediatric patients with IBD compared with healthy controls. In contrast to the many studies of the bacterial component of the gut microbiota, relatively little is



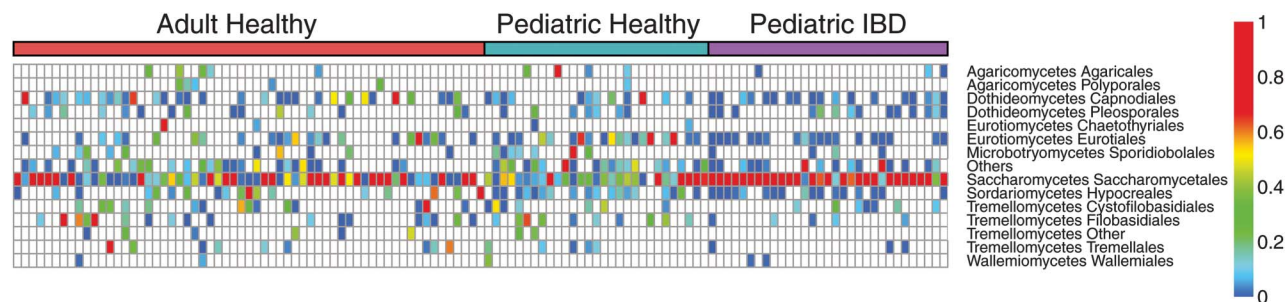


FIGURE 3. Taxonomic heatmap of fungal community members in healthy and IBD subjects. Proportions of fungal OTUs in adult healthy, pediatric healthy, and IBD subjects. The color bar on the top indicates the health status of each subject. Each column indicates a different subject. The color bar on the right side indicates the average relative abundances of these genera in each subject.

known about the fungal and archaeal microbiota and their roles in IBD. Fungi and archaea are known to be normal components of the gut microbiota.<sup>1,4,5,48</sup> In this study, we recovered abundant fungal reads from both patients with IBD and healthy controls. In contrast, archaea were rare in the pediatric samples. The potential importance of fungi in IBD is well recognized. Antibodies to baker's yeast (*S. cerevisiae*), termed ASCA, are detected more frequently in patients with CD than in healthy controls or in patients with UC (29%–69% of patients with CD<sup>33,49–51</sup>). The

fungal antigen recognized is thought to be phosphopeptidomannan of the *S. cerevisiae* cell wall.<sup>52</sup> ASCA positivity may precede the development of IBD,<sup>53</sup> and ASCA are found more commonly in healthy relatives of patients with CD.<sup>54</sup> The difference in ASCA prevalence raises the possibility of a differential fungal microbiota in patients with CD versus healthy individuals, and our data document such a difference.

Although the ASCA epitope is associated with *S. cerevisiae*, it is also associated with *Candida albicans*<sup>55</sup> and potentially

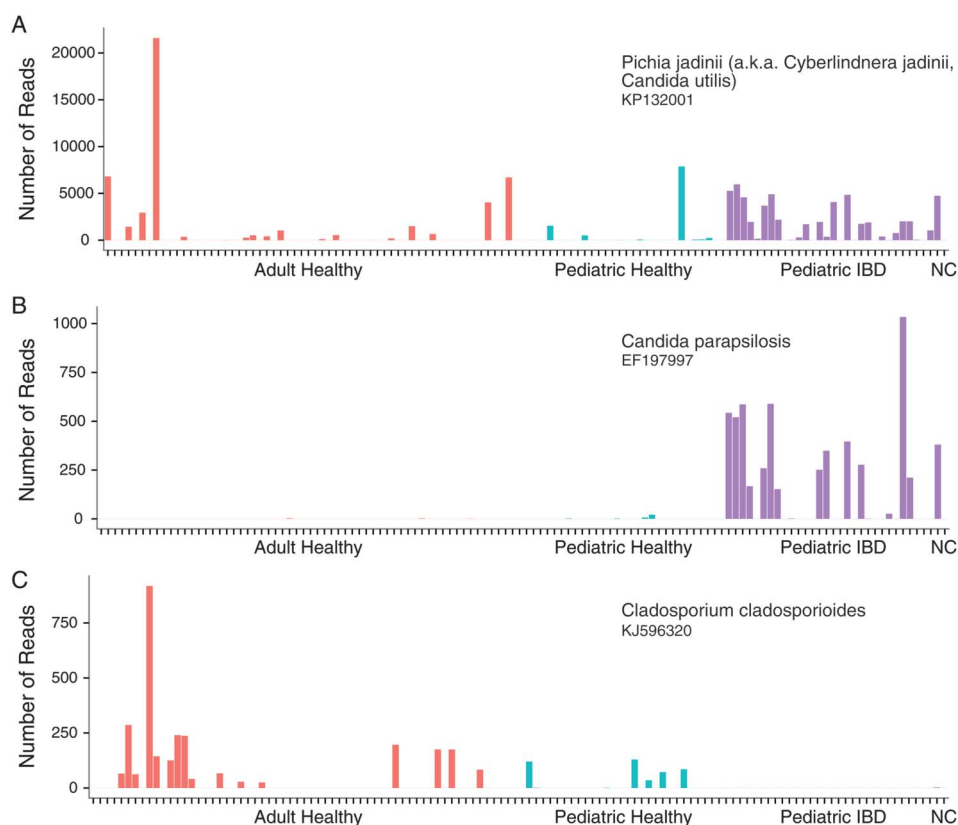


FIGURE 4. Abundance of selected fungal OTUs. Bar charts showing the number of reads from 3 selected fungal OTUs: (A) *Candida* (accession KP132001), (B) *Candida* (accession EF197997), and (C) *Cladosporium* (accession KJ596320). Adult healthy subjects, pediatric healthy subjects, and pediatric IBD subjects are shown in red, blue, and purple, respectively. A negative control sample (NC) that was processed alongside the samples is shown at the right in green. No reads matching any of the 3 lineages mentioned above were found in the negative control sample.

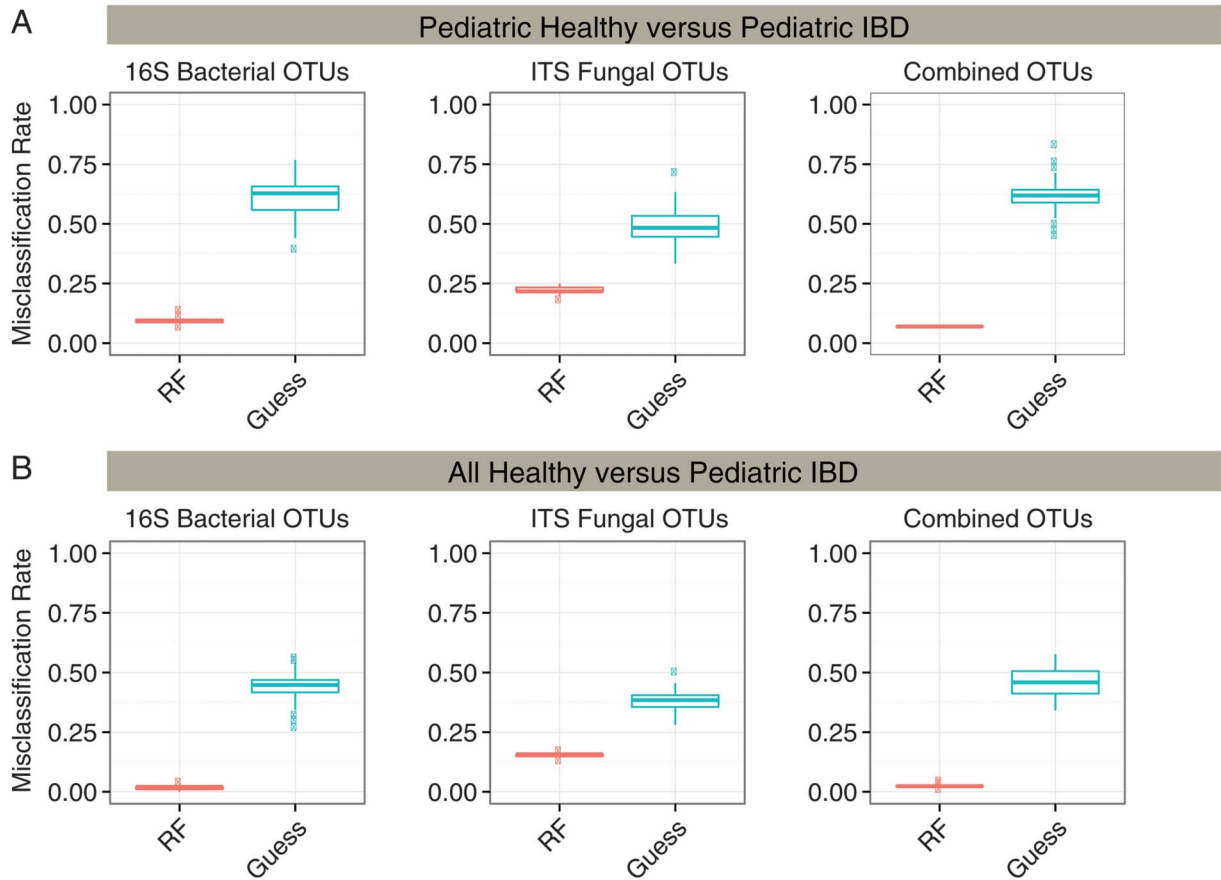


FIGURE 5. Random forest classification accuracy for healthy and IBD subjects. A random forest classifier was used to group samples into either healthy or IBD categories. Random forest accuracy (red) was compared with random guessing (blue) with the misclassification rate indicated on the y-axis. The classifier was run using 16S bacterial OTUs, ITS fungal OTUs, and the combination of both bacterial and fungal OTUs. Results were also compared using (A) pediatric healthy and pediatric IBD subjects or (B) both adult and pediatric healthy subjects and IBD subjects.

other related yeasts. *Candida* colonization has been associated with multiple diseases of the gastrointestinal tract including CD, UC, esophagitis, oral mucositis, and even gastric ulcers.<sup>56</sup> *Candida* strains colonize gastric ulcers, particularly when the ulcers are large or perforated<sup>56</sup> and *Candida* esophagitis responds to antifungal therapy demonstrating the role of *Candida* colonization in the pathogenesis of inflammatory processes. Increased colonization with *Candida* in IBD might be a consequence of mucosal or immune system alterations and the use of antibiotics.<sup>28</sup> The health consequences are unknown but may be adverse.

We found 3 fungi with differential abundance in patients with IBD versus healthy controls. Fungal phylogeny is in a state of transition, so species level attributions are not fully secure. For example, until recently, sexual forms (teleomorphs) were commonly placed in separate genera from asexual forms (anamorphs) of the same fungal organisms.<sup>57</sup> We found one *Candida* OTU (GenBank ID: KP132001) that was more abundant in patients with IBD, which has been associated with 5 named species, including *Pichia jadinii*, *Candida utilis*, *Cyberlindnera jadinii*, *Torulopsis utilis*, and *Torula utilis*,<sup>58</sup> illustrating the challenges of current fungal taxonomy. A common name for this group is

*Torula* yeast. In its inactive form, *Torula* yeast is widely used as a flavoring that imparts a savory taste to soups, sauces, and snack products.<sup>59</sup> Possibly, the pediatric subjects with IBD were eating diets more enriched in *Torula* yeasts, although there is no universal diet for patients with IBD, so this seems unlikely. Patients with IBD frequently identify dietary components that cause increased symptoms and so follow restricted diets when the disease is active, but most subjects studied here had relatively low disease activity scores and were therefore not expected to be on specialized diets. Also, a review of dietary records kept by the patients in our study did not reveal an obvious bias toward the consumption of foods rich in *Torula* yeast (data not shown). The second explanation is that there is truly increased *Torula* yeast colonization in patients with IBD, which at present seems more likely. Members of the fungal genus *Pichia* can be pathogenic to humans, especially in immunocompromised hosts.<sup>60</sup> *Pichia* species may also lead to enteritis in animals,<sup>61,62</sup> and pathogenesis by *Candida* species is well described. Further studies are needed to clarify whether colonization is related to disease pathogenesis or whether it is a consequence of gut inflammation or immune suppressive therapy.

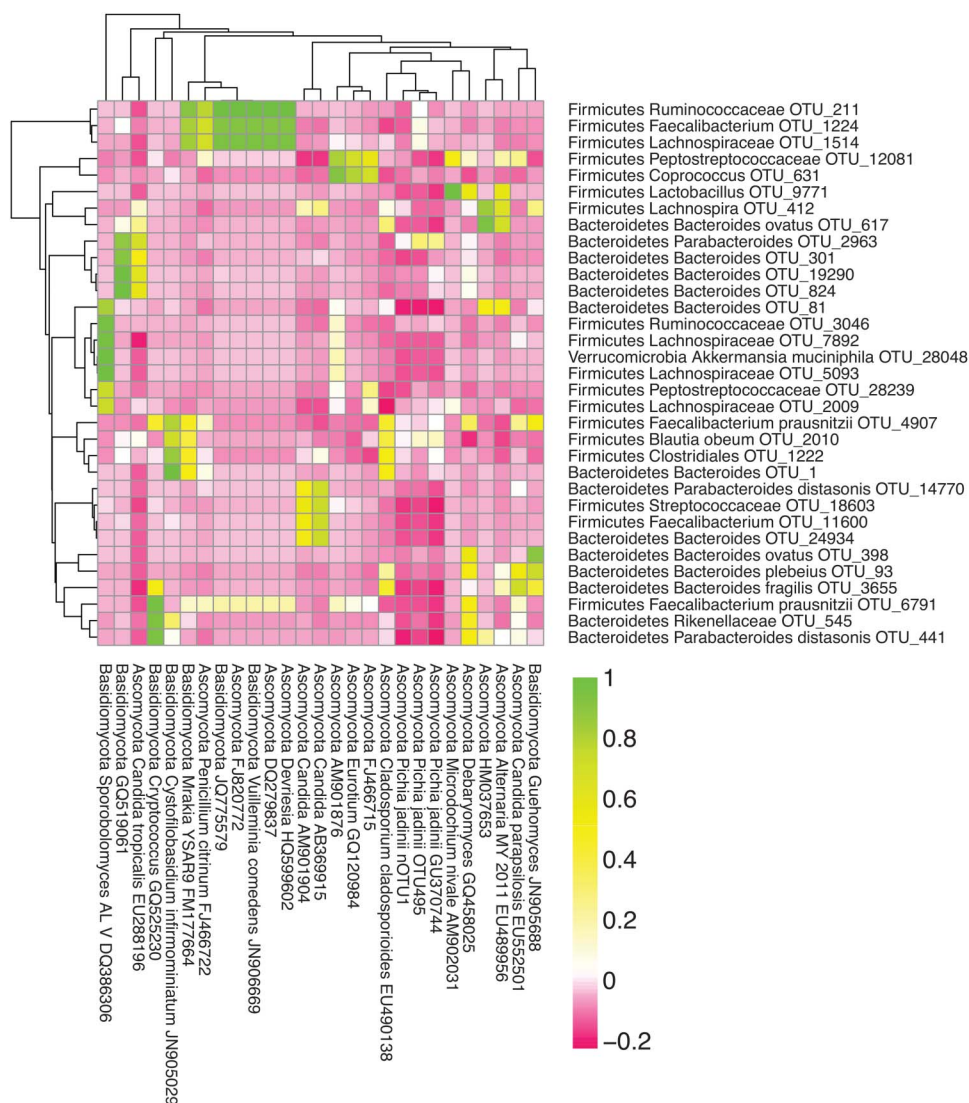


FIGURE 6. Correlations between bacterial and fungal OTUs in pediatric IBD. The Pearson correlation coefficient between fungal and bacterial OTUs in pediatric patients with IBD was calculated. OTUs were included in this heatmap if they had greater than 100 sequences in pediatric patients with IBD. OTUs were included if they significantly correlated with at least 1 other OTU (2-sided correlation, in which the *P* value exceeded 0.05 after Bonferroni correction).

We found a second *Candida* OTU (GenBank ID: EF197997) that was more abundant in patients with IBD, and a *Cladosporium cladosporioides* OTU (GenBank ID: KJ596320) that was more abundant in healthy controls. All of the patients with IBD in our cohort were undergoing various therapies, so it is not clear whether these taxonomic changes were associated with IBD itself or were a consequence of treatment, for example immunosuppression.<sup>63</sup> Other *Candida* yeasts, in contrast, are used as probiotics,<sup>64</sup> raising the possibility that the yeast lineages present contribute a mixture of positive and negative influences.

Studies in animal models suggest a functional role for fungi in intestinal inflammation. Mice lacking the dectin-1 receptor, a pattern recognition receptor known to identify fungi, were more susceptible to colonic inflammation in a dextran sodium sulfate

colitis model.<sup>30</sup> Administration of *Candida tropicalis* resulted in a more severe dextran sodium sulfate–induced colitis in this model, and treatment with fluconazole, an antifungal agent, reduced disease.<sup>30</sup> Another PRR, SIGNR3, was recently found to be involved in recognizing fungal commensals. Mice lacking SIGNR3 also exhibit increased intestinal inflammation on exposure to dextran sodium sulfate.<sup>65</sup> Additional investigation is needed in humans to determine the mechanisms responsible for the observed alterations in the fungal microbiota in patients with IBD and the role they may play in disease pathogenesis through pattern recognition receptors.

To probe distinctive lineages in health and disease and to develop noninvasive biomarkers, we developed a random forest classifier to sort patients with IBD versus healthy controls. Using



a combination of bacterial and fungal OTUs allowed greater than 93% accuracy in distinguishing samples. The currently available biomarkers focus on the evaluation of patients already diagnosed with IBD such as differentiating CD from UC, differentiating quiescent from active disease, and predicting disease course.<sup>66</sup> Drug levels and antidrug antibodies are also used as biomarkers.<sup>66</sup> Unfortunately, the biomarkers currently used to evaluate patients with symptoms of IBD, such as C-reactive protein, erythrocyte sedimentation rate, and fecal calprotectin, are not specific to IBD. Additionally, methods are needed to establish early diagnosis of at-risk individuals, such as asymptomatic family members of patients with IBD. It will be useful to evaluate the performance of the assay targeting both bacteria and fungi described here in these settings.

In a recently described analysis of the archaeal microbiome of healthy human subjects, approximately 45% of subjects were found to have archaea present in the stool.<sup>5</sup> The majority of sequences annotated as *Methanobrevibacter*.<sup>5</sup> In our study, we found only 3 pediatric patients with IBD with detectable *Methanobrevibacter*. The previous literature has been inconsistent, with some studies reporting increased prevalence of methanogens or decreased methane production in patients with IBD<sup>67–70</sup> and other studies demonstrating increased methane production in patients with IBD.<sup>71</sup> The low number of pediatric IBD subjects found to have archaeal species from the stool in our study is consistent with a report of increase in methane production with aging.<sup>72</sup> Thus, our data suggest that archaeal colonization may be more characteristic of the adult gut microbiota.

In conclusion, we report that pediatric IBD was associated with decreased fungal diversity and also altered taxonomic composition. We found an increased proportion of 2 *Candida* OTUs in patients with IBD. The fungal microbiota may be important in IBD given the increased prevalence of ASCA and the more recent work suggesting a relationship between fungal pattern recognition receptors and IBD in mice. We also report a compositional signature elucidated in the random forest analysis that may be useful in diagnosing patients with IBD. Thus, these findings (1) clarify the existence and nature of fungal dysbiosis in pediatric IBD, (2) pose the question of whether specific yeast lineages may be more proinflammatory or colonize associated with inflammation, (3) motivate the investigation of fungal blooms in response to treatment of IBD, and (4) provide a signature of dysbiosis in pediatric patients potentially useful in individualized molecular diagnosis.

## ACKNOWLEDGMENTS

The content is solely the responsibility of the authors and does not necessarily represent the official views of the National Center for Research Resources, National Institutes of Health, or Pennsylvania Department of Health. Sequences were submitted to the Sequence Read Archive with accession number SRP050217.

## REFERENCES

1. Arumugam M, Raes J, Pelletier E, et al. Enterotypes of the human gut microbiome. *Nature*. 2011;473:174–180.

2. Richard ML, Lamas B, Liguori G, et al. Gut fungal microbiota: the Yin and Yang of inflammatory bowel disease. *Inflamm Bowel Dis*. 2015;21:656–665.
3. Hansen EE, Lozupone CA, Rey FE, et al. Pan-genome of the dominant human gut-associated archaeon, *Methanobrevibacter smithii*, studied in twins. *Proc Natl Acad Sci U S A*. 2011;108(suppl 1):4599–4606.
4. Samuel BS, Hansen EE, Manchester JK, et al. Genomic and metabolic adaptations of *Methanobrevibacter smithii* to the human gut. *Proc Natl Acad Sci U S A*. 2007;104:10643–10648.
5. Hoffmann C, Dollive S, Grunberg S, et al. Archaea and fungi of the human gut microbiome: correlations with diet and bacterial residents. *PLoS One*. 2013;8:e66019.
6. Huttenhower C, Kostic AD, Xavier RJ. Inflammatory bowel disease as a model for translating the microbiome. *Immunity*. 2014;40:843–854.
7. Sartor RB. Therapeutic correction of bacterial dysbiosis discovered by molecular techniques. *Proc Natl Acad Sci U S A*. 2008;105:16413–16414.
8. Walters WA, Xu Z, Knight R. Meta-analyses of human gut microbes associated with obesity and IBD. *FEBS Lett*. 2014;588:4223–4233.
9. Sartor RB. Mechanisms of disease: pathogenesis of Crohn's disease and ulcerative colitis. *Nat Clin Pract Gastroenterol Hepatol*. 2006;3:390–407.
10. Khor B, Gardet A, Xavier RJ. Genetics and pathogenesis of inflammatory bowel disease. *Nature*. 2011;474:307–317.
11. Ek WE, D'Amato M, Halfvarson J. The history of genetics in inflammatory bowel disease. *Ann Gastroenterol*. 2014;27:294–303.
12. Vanderploeg R, Panaccione R, Ghosh S, et al. Influences of intestinal bacteria in human inflammatory bowel disease. *Infect Dis Clin North Am*. 2010;24:977–993.ix.
13. Van de Merwe JP, Schroder AM, Wensinck F, et al. The obligate anaerobic faecal flora of patients with Crohn's disease and their first-degree relatives. *Scand J Gastroenterol*. 1988;23:1125–1131.
14. Walker AW, Sanderson JD, Churcher C, et al. High-throughput clone library analysis of the mucosa-associated microbiota reveals dysbiosis and differences between inflamed and non-inflamed regions of the intestine in inflammatory bowel disease. *BMC Microbiol*. 2011;11:7.
15. Manichanh C, Rigottier-Gois L, Bonnaud E, et al. Reduced diversity of faecal microbiota in Crohn's disease revealed by a metagenomic approach. *Gut*. 2006;55:205–211.
16. Gophna U, Sommerfeld K, Gophna S, et al. Differences between tissue-associated intestinal microfloras of patients with Crohn's disease and ulcerative colitis. *J Clin Microbiol*. 2006;44:4136–4141.
17. Frank DN, St Amand AL, Feldman RA, et al. Molecular-phylogenetic characterization of microbial community imbalances in human inflammatory bowel diseases. *Proc Natl Acad Sci U S A*. 2007;104:13780–13785.
18. Martinez-Medina M, Aldeguer X, Gonzalez-Huix F, et al. Abnormal microbiota composition in the ileocolonic mucosa of Crohn's disease patients as revealed by polymerase chain reaction-denaturing gradient gel electrophoresis. *Inflamm Bowel Dis*. 2006;12:1136–1145.
19. Prescott NJ, Fisher SA, Franke A, et al. A nonsynonymous SNP in ATG16L1 predisposes to ileal Crohn's disease and is independent of CARD15 and IBD5. *Gastroenterology*. 2007;132:1665–1671.
20. Swidsinski A, Loening-Baucke V, Vaneechoutte M, et al. Active Crohn's disease and ulcerative colitis can be specifically diagnosed and monitored based on the biostructure of the fecal flora. *Inflamm Bowel Dis*. 2008;14:147–161.
21. Seksik P, Rigottier-Gois L, Gramet G, et al. Alterations of the dominant faecal bacterial groups in patients with Crohn's disease of the colon. *Gut*. 2003;52:237–242.
22. Baumgart M, Dogan B, Rishniw M, et al. Culture independent analysis of ileal mucosa reveals a selective increase in invasive *Escherichia coli* of novel phylogeny relative to depletion of Clostridiales in Crohn's disease involving the ileum. *ISME J*. 2007;1:403–418.
23. Mangin I, Bonnet R, Seksik P, et al. Molecular inventory of faecal microflora in patients with Crohn's disease. *FEMS Microbiol Ecol*. 2004;50:25–36.
24. Kohler JR, Casadevall A, Perfect J. The Spectrum of fungi that infects humans. *Cold Spring Harb Perspect Med*. 2014;5:a019273.
25. Ott SJ, Kuhbacher T, Musfeldt M, et al. Fungi and inflammatory bowel diseases: alterations of composition and diversity. *Scand J Gastroenterol*. 2008;43:831–841.
26. Dollive S, Peterfreund GL, Sherrill-Mix S, et al. A tool kit for quantifying eukaryotic rRNA gene sequences from human microbiome samples. *Genome Biol*. 2012;13:R60.



27. Bittinger K, Charlson ES, Loy E, et al. Improved characterization of medically relevant fungi in the human respiratory tract using next-generation sequencing. *Genome Biol.* 2014;15:487.
28. Dollive S, Chen YY, Grunberg S, et al. Fungi of the murine gut: episodic variation and proliferation during antibiotic treatment. *PLoS One.* 2013;8:e71806.
29. Wang ZK, Yang YS, Stefka AT, et al. Review article: fungal microbiota and digestive diseases. *Aliment Pharmacol Ther.* 2014;39:751–766.
30. Iliiev ID, Funari VA, Taylor KD, et al. Interactions between commensal fungi and the C-type lectin receptor Dectin-1 influence colitis. *Science.* 2012;336:1314–1317.
31. Barclay GR, McKenzie H, Pennington J, et al. The effect of dietary yeast on the activity of stable chronic Crohn's disease. *Scand J Gastroenterol.* 1992;27:196–200.
32. Zwolinska-Wcislo M, Brzozowski T, Budak A, et al. Effect of *Candida* colonization on human ulcerative colitis and the healing of inflammatory changes of the colon in the experimental model of colitis ulcerosa. *J Physiol Pharmacol.* 2009;60:107–118.
33. Prideaux L, De Cruz P, Ng SC, et al. Serological antibodies in inflammatory bowel disease: a systematic review. *Inflamm Bowel Dis.* 2012;18:1340–1355.
34. Li Q, Wang C, Tang C, et al. Dysbiosis of gut fungal microbiota is associated with mucosal inflammation in Crohn's disease. *J Clin Gastroenterol.* 2014;48:513–523.
35. Carbonero F, Benefiel AC, Gaskins HR. Contributions of the microbial hydrogen economy to colonic homeostasis. *Nat Rev Gastroenterol Hepatol.* 2012;9:504–518.
36. Samuel BS, Gordon JI. A humanized gnotobiotic mouse model of host-archaeal-bacterial mutualism. *Proc Natl Acad Sci U S A.* 2006;103:10011–10016.
37. Furusawa Y, Obata Y, Fukuda S, et al. Commensal microbe-derived butyrate induces the differentiation of colonic regulatory T cells. *Nature.* 2013;504:446–450.
38. Hyams JS, Ferry GD, Mandel FS, et al. Development and validation of a pediatric Crohn's disease activity index. *J Pediatr Gastroenterol Nutr.* 1991;12:439–447.
39. Turner D, Otley AR, Mack D, et al. Development, validation, and evaluation of a pediatric ulcerative colitis activity index: a prospective multicenter study. *Gastroenterology.* 2007;133:423–432.
40. Wu GD, Chen J, Hoffmann C, et al. Linking long-term dietary patterns with gut microbial enterotypes. *Science.* 2011;334:105–108.
41. McKenna P, Hoffmann C, Minkah N, et al. The macaque gut microbiome in health, lentiviral infection, and chronic enterocolitis. *PLoS Pathogens.* 2008;4:e20.
42. Hoffmann C, Minkah N, Leipzig J, et al. DNA bar coding and pyrosequencing to identify rare HIV drug resistance mutations. *Nucleic Acids Res.* 2007;35:e91.
43. Wu GD, Lewis JD, Hoffmann C, et al. Sampling and pyrosequencing methods for characterizing bacterial communities in the human gut using 16S sequence tags. *BMC Microbiol.* 2010;10:206.
44. Caporaso JG, Kuczynski J, Stombaugh J, et al. QIIME allows analysis of high-throughput community sequencing data. *Nat Methods.* 2010;7:335–336.
45. Cole JR, Wang Q, Cardenas E, et al. The Ribosomal Database Project: improved alignments and new tools for rRNA analysis. *Nucleic Acids Res.* 2009;37:D141–D145.
46. Peterson DA, Frank DN, Pace NR, et al. Metagenomic approaches for defining the pathogenesis of inflammatory bowel diseases. *Cell Host Microbe.* 2008;3:417–427.
47. Bellemain E, Carlsen T, Brochmann C, et al. ITS as an environmental DNA barcode for fungi: an in silico approach reveals potential PCR biases. *BMC Microbiol.* 2010;10:189.
48. Li J, Jia H, Cai X, et al. An integrated catalog of reference genes in the human gut microbiome. *Nat Biotechnol.* 2014;32:834–841.
49. Ruemmele FM, Seidman EG. Cytokine-intestinal epithelial cell interactions: implications for immune mediated bowel disorders. *Zhonghua Min Guo Xiao Er Ke Yi Xue Hui Za Zhi.* 1998;39:1–8.
50. Quinton JF, Sendid B, Reumaux D, et al. Anti-Saccharomyces cerevisiae mannan antibodies combined with antineutrophil cytoplasmic autoantibodies in inflammatory bowel disease: prevalence and diagnostic role. *Gut.* 1998;42:788–791.
51. Peeters M, Joossens S, Vermeire S, et al. Diagnostic value of anti-Saccharomyces cerevisiae and antineutrophil cytoplasmic autoantibodies in inflammatory bowel disease. *Am J Gastroenterol.* 2001;96:730–734.
52. Peyrin-Biroulet L, Standaert-Vitse A, Branche J, et al. IBD serological panels: facts and perspectives. *Inflamm Bowel Dis.* 2007;13:1561–1566.
53. Israeli E, Grotto I, Gilburd B, et al. Anti-Saccharomyces cerevisiae and antineutrophil cytoplasmic antibodies as predictors of inflammatory bowel disease. *Gut.* 2005;54:1232–1236.
54. Standaert-Vitse A, Sendid B, Joossens M, et al. *Candida albicans* colonization and ASCA in familial Crohn's disease. *Am J Gastroenterol.* 2009;104:1745–1753.
55. Standaert-Vitse A, Jouault T, Vandewalle P, et al. *Candida albicans* is an immunogen for anti-Saccharomyces cerevisiae antibody markers of Crohn's disease. *Gastroenterology.* 2006;130:1764–1775.
56. Kumamoto CA. Inflammation and gastrointestinal *Candida* colonization. *Curr Opin Microbiol.* 2011;14:386–391.
57. Hawksworth DL. A new dawn for the naming of fungi: impacts of decisions made in Melbourne in July 2011 on the future publication and regulation of fungal names. *IMA Fungus.* 2011;2:155–162. Available at: <http://www.ncbi.nlm.nih.gov/Taxonomy/Browser/wwwtax.cgi?mode=Info&id=4903>. Accessed March 11, 2014.
58. National Center for Biotechnology Information. Taxonomy Browser. Available at: <http://www.ncbi.nlm.nih.gov/Taxonomy/Browser/wwwtax.cgi?lvl=0&id=4903/>. Accessed April 21, 2015.
59. Festring D, Hofmann T. Discovery of N(2)-(1-carboxylethyl)guanosine 5'-monophosphate as an umami-enhancing maillard-modified nucleotide in yeast extracts. *J Agric Food Chem.* 2010;58:10614–10622.
60. Moses A, Maayan S, Shvil Y, et al. *Hansenula anomala* infections in children: from asymptomatic colonization to tissue invasion. *Pediatr Infect Dis J.* 1991;10:400–402.
61. Suchodolski JS, Morris EK, Allenspach K, et al. Prevalence and identification of fungal DNA in the small intestine of healthy dogs and dogs with chronic enteropathies. *Vet Microbiol.* 2008;132:379–388.
62. Pettoello-Mantovani M, Nocerino A, Polonelli L, et al. *Hansenula anomala* killer toxin induces secretion and severe acute injury in the rat intestine. *Gastroenterology.* 1995;109:1900–1906.
63. Dave M, Purohit T, Razonable R, et al. Opportunistic infections due to inflammatory bowel disease therapy. *Inflamm Bowel Dis.* 2014;20:196–212.
64. Sanders ME, Guarner F, Guerrant R, et al. An update on the use and investigation of probiotics in health and disease. *Gut.* 2013;62:787–796.
65. Eriksson M, Johannsen T, von Smolinski D, et al. The C-type lectin receptor SIGIRR binds to fungi present in commensal microbiota and influences immune regulation in experimental colitis. *Front Immunol.* 2013;4:196.
66. Lewis JD. The utility of biomarkers in the diagnosis and therapy of inflammatory bowel disease. *Gastroenterology.* 2011;140:1817–1826. e1812.
67. Levine J, Ellis CJ, Furne JK, et al. Fecal hydrogen sulfide production in ulcerative colitis. *Am J Gastroenterol.* 1998;93:83–87.
68. Pimentel M, Mayer AG, Park S, et al. Methane production during lactulose breath test is associated with gastrointestinal disease presentation. *Dig Dis Sci.* 2003;48:86–92.
69. Rana SV, Sharma S, Malik A, et al. Small intestinal bacterial overgrowth and orocecal transit time in patients of inflammatory bowel disease. *Dig Dis Sci.* 2013;58:2594–2598.
70. Scanlan PD, Shanahan F, Marchesi JR. Human methanogen diversity and incidence in healthy and diseased colonic groups using *mcrA* gene analysis. *BMC Microbiol.* 2008;8:79.
71. Eadala P, Matthews SB, Waud JP, et al. Association of lactose sensitivity with inflammatory bowel disease—demonstrated by analysis of genetic polymorphism, breath gases and symptoms. *Aliment Pharmacol Ther.* 2011;34:735–746.
72. Peled Y, Gilat T, Liberman E, et al. The development of methane production in childhood and adolescence. *J Pediatr Gastroenterol Nutr.* 1985;4:575–579.