

ARTICLE

Female Breast Cancer Incidence Among Asian and Western Populations: More Similar Than Expected

Hyuna Sung, Philip S. Rosenberg, Wan-Qing Chen, Mikael Hartman, Wei-yen Lim, Kee Seng Chia, Oscar Wai-Kong Mang, Chun-Ju Chiang, Daehee Kang, Roger Kai-Cheong Ngan, Lap Ah Tse, William F. Anderson*, Xiaohong R. Yang*

Affiliations of authors: Division of Cancer Epidemiology and Genetics, National Cancer Institute, National Institutes of Health, Bethesda, MD (HS, PSR, WFA, XRY); National Office for Cancer Prevention and Control & National Central Cancer Registry, National Cancer Center, Beijing, China (WQC); Department of Medical Epidemiology and Biostatistics, Karolinska Institute, Stockholm, Sweden (MH); Saw Swee Hock School of Public Health, National University of Singapore, Singapore (MH, WYL, KSC); Department of Surgery, Yong Loo Lin School of Medicine, National University of Singapore, Singapore (MH); Hong Kong Cancer Registry, Hospital Authority, Hong Kong, China (OWKM, RKC); Taiwan Cancer Registry and Graduate Institute of Epidemiology and Preventive Medicine, College of Public Health, National Taiwan University, Taipei, Taiwan (CJC); Department of Preventive Medicine, Seoul National University College of Medicine, Seoul, Korea (DK); Department of Clinical Oncology, Queen Elizabeth Hospital, Kowloon, Hong Kong, China (RKC); Division of Occupational and Environmental Health, JC School of Public Health and Primary Care, the Chinese University of Hong Kong, Hong Kong, China (LAT).

*These authors share last authorship.

Correspondence to: Hyuna Sung, Ph.D., National Institutes of Health, National Cancer Institute/DCEG/GEB, 9609 Medical Center Drive, 6E512, Bethesda, MD 20892 (e-mail: hyuna.sung@nih.gov).

Abstract

Background: Previous reports suggested that female breast cancer is associated with earlier ages at onset among Asian than Western populations. However, most studies utilized cross-sectional analyses that may be confounded by calendar-period and/or birth cohort effects. We, therefore, considered a longitudinal (forward-looking) approach adjusted for calendar-period changes and conditioned upon birth cohort.

Methods: Invasive female breast cancer data (1988–2009) were obtained from cancer registries in China, Hong Kong, South Korea, Taiwan, Singapore, and the United States. Age-period-cohort models were used to extrapolate longitudinal age-specific incidence rates for the 1920, 1944, and 1970 birth cohorts.

Results: Cross-sectional age-specific incidence rates rose continuously until age 80 years among US white women, but plateaued or decreased after age 50 years among Asian women. In contrast, longitudinal age-specific rates were proportional (similar) among all Asian countries and the United States with incidence rates rising continuously until age 80 years. The extrapolated estimates for the most recent cohorts in some Asian countries actually showed later ages at onset than in the United States. Additionally, over successive birth cohorts, the incidence rate ratios (IRRs) for the longitudinal curves converged (narrowed) between Asian and US white women.

Conclusions: Similar longitudinal age-specific incidence rates along with converging IRRs indicate that the age effects for invasive breast cancer are more similar among Asian and Western populations than might be expected from a solely cross-sectional analysis. Indeed, the Asian breast cancer rates in recent generations are even surpassing the historically high rates in the United States, highlighting an urgent need for efficient prevention and treatment strategies among Asian populations.

Based upon GLOBOCAN 2012, the estimated age-standardized incidence rate (ASR) for invasive female breast cancer in Asia is 29.1 per 100 000 women-years, which is 30% of Northern America and Europe (ASR: 91.6 and 71.1 per 100 000 women-years, respectively) (1). However, incidence rates have been increasing rapidly in Asian countries and breast cancer is now the most frequently diagnosed cancer and the second leading cause of cancer death among Asian women (2,3).

Previous studies have also shown that the age-specific incidence rates of breast cancer have a different pattern among Asian from Western populations and is characterized by an earlier ages at onset (2,4–6). That is, in contrast to the continuous rise in the age-specific rates with advancing age among Western women (7), rates plateau or decrease after age 50 years among Asian women (2,3,5,8). Explanations for this early-onset incidence rate pattern range from calendar-period effects (changes in case ascertainment and/or screening for all age groups at a given point in time) and/or birth cohort effects (changes in risk factors over successive generations) (9–12) to distinct age-specific etiology (6,13) or biology (4,8,14,15).

However, nearly all previous descriptive studies relied on the cross-sectional assessment of the age-specific biology (2,4,5,16), which can be misleading at best or incorrect at worst because of biases related to calendar-period and/or birth cohort effects (9,17). For example, calendar-period or screening effects might not be applied to all birth cohorts equally, and a progressive increase in risk from one cohort or generation to the next could blunt the age-specific incidence rate curve among older women (12,18). To gain insight into the age-specific effects for breast cancer, a more accurate assessment of age incidence is derived from a longitudinal (forward-looking or prospective) analysis (17).

Therefore, in this study, we examined longitudinal age-specific incidence rates in five Asian countries/regions obtained from age-period-cohort framework (19) and compared the patterns with longitudinal incidence in the United States in order to assess similarities and differences in the age effects while accounting for the influences of secular changes (calendar-period and birth cohort effects) (17). This unique study was possible because we now have two decades of high-quality population-based cancer registry data from five Asian countries/regions that can be compared with data from the United States.

Methods

Study Population

We obtained invasive female breast cancer case (ICD-10 Code C50) and population data from the Cancer and/or National Statistic Registries in five Asian countries/regions (mainland China, Hong Kong, South Korea, Singapore, and Taiwan). Study subjects included cases diagnosed from 1988 through 2009 (2000 through 2009 for South Korea) and restricted to women age 30 to 79 years. Registry specifics are shown in Table 1 and have been described elsewhere (11,12,20–25). Data from mainland China do not cover Hong Kong or Taiwan, where cancer registries were established and have been maintained independently from China. For comparison, we obtained invasive breast cancer incidence data among US white women from the National Cancer Institute's Surveillance, Epidemiology, and End Results (SEER) 9 Registries Database (SEER 9 Regs Research Data, Nov 2012 Sub [1973–2010]) (20). This study was exempted from the review by the National Institutes of Health (NIH) Office of Human Subject Research because it did not involve interaction with human

subjects and/or use personal identifying information (OHSRP No.12079).

Statistical Analysis

We analyzed the observed age-standardized incidence rates (ASRs) per 100 000 women-years and the cross-sectional age-specific incidence rates. Rates were age-standardized to the 2000 US population by the direct method (26). Temporal trends in the ASR were quantified with the estimated annual percentage change (EAPC) of the ASR, using weighted log-linear regression (27).

We used age-period-cohort models to adjust the observed data for the interrelated effects between age at diagnosis, year of diagnosis (period), and year of birth (cohort). To facilitate age-period-cohort analysis, we used equally spaced two-year age groups and two-year time periods among women age 30 to 79 years. We had 25 two-year age groups (30–31,32–34,78–79) and 11 two-year time periods (1988–1989, 1990–1991, ..., and 2008–2009), spanning 35 partially overlapping four-year birth cohorts referred to by midyear of birth (1910, 1912, ..., and 1978) for all countries except for South Korea. South Korea had the same number of age groups but only five two-year time periods (2000–2001, 2002–2003, ..., and 2008–2009) (Supplementary Figure 1 and Supplementary Table 1, available online).

Age-period-cohort parameters and functions included the net drift and longitudinal age-specific incidence rates (17,19). Net drift is the sum of linear trends in the period and cohort effects, and is the age-period-cohort model analog of the EAPC. The longitudinal age-specific incidence rate curve represents an extrapolation of age-specific experience of all of the cohorts in the study. By construction, it is conditioned on a reference cohort and adjusted for period changes. To compare longitudinal age incidence curves over successive cohorts, we used three reference birth-cohorts: 1920 (early cohort), 1944 (midcohort), and 1970 (recent cohort). Given the short time period for data of South Korea, the 1922 birth cohorts was used as reference instead of the 1920 birth cohort for the early cohort (Supplementary Figure 1 and Supplementary Table 1, available online). Age groups at which the reference cohorts were directly observed in the registries were indicated as shaded areas (dark gray area: 68–79 years, 44–65 years, and 30–39 years for 1920, 1944, and 1970 birth cohort, respectively) in the plots, as were the forward and backwards extrapolations (Figure 3).

To quantify the differences in longitudinal age incidence, relative incidence rates for each Asian country compared with the United States were expressed as incidence rate ratios (IRRs) with 95% confidence intervals (CIs) for the central age group (74–75 years, 54–55 years, and 34–35 years for 1920, 1944, and 1970 birth cohort, respectively) for each reference cohort.

Age-adjusted secular trends were plotted by age group on a log-rate by linear time scale. Age-specific incidence rates were plotted on a log-rate by log-age scale. All statistical tests were two-sided and considered significant when *P* values were under .05. Statistical analyses were conducted using MATLAB R2012b (MathWorks Inc., Natick, MA).

Results

Our study included 388 242 Asian cases and 266 482 US white cases age 30 to 79 years diagnosed from 1988 through 2009 (Table 1). Figure 1 shows the standard cross-sectional age incidence curves for breast cancer in Asian countries and among US whites from 1988 to 2009. Among US white women, the incidence rates for the

Table 1. Descriptive statistics for invasive female breast cancer (1998–2009) in five Asian countries/regions and the United States

Cancer registries and screening practices	China (23)	Hong Kong (21)	South Korea (21,23)	Singapore (22,24)	Taiwan (12,25)	US (SEER 9) (20)
Study participants						
Study period	1988–2009	1988–2009	2000–2009	1988–2009	1988–2009	1988–2009
Number of case patients (age 30–79 y)	138 279	35 733	99 984	20 728	93 518	266 482
ASR per 100 000 women-years (95% CI)	59.3 (59.0 to 59.6)	91.3 (90.4 to 92.3)	66.0 (65.6 to 66.4)	116.2 (114.6 to 117.8)	80.6 (80.0 to 81.0)	206.3 (205.5 to 207.1)
EAPC, %/y (95% CI)	2.18 (2.02 to 2.29)	2.02 (1.82 to 2.23)	6.38 (5.98 to 6.79)	2.65 (2.37 to 2.93)	5.64 (5.50 to 5.77)	-0.24 (-0.31 to -0.17)
Net drift, %/y (95% CI)	2.04 (1.92 to 2.16)	1.99 (1.81 to 2.18)	6.99 (6.71 to 7.28)	2.87 (2.61 to 3.13)	5.97 (5.82 to 6.11)	-0.11 (-0.17 to -0.04)
Cancer registries						
Year registration began	1960s for regional; 1998 for 30 regions; 2008 for 56 regions from 10 provinces*	1963	1980 for regional; 1999 for entire population	1968	1979	1943 for Connecticut; 1973 for SEER
Registry coverage of whole population, % (y)	6.21 (2008)	100 (2003)	100 (1999)	97.8 (1968–1977)	80 (2002); 97 (2008)	9.4 (SEER 9)
Death certificate only, % (y)	0.44 (2008)	1.4 (1998–2002)	1.5 (1999–2001)	0 (1998–2002)	0†	0.68 (2009)†
Screening practices						
Year screening program began	N/A	1991 (37)	1999 (38)	2002 (39,40)	2002 (36,41,42)	1980s (43,44)
Screening program type	No population-based screening	Government-subsidized screening program‡	National screening policy with national program implementation	Government-subsidized screening program	Fully government-subsidized screening program	Other
Age groups covered, y	N/A	N/A	40–75+	40–75+	40–69§	40–75+
Participation rate, %	N/A	Not reported	33.2 (2004); 55.2 (2009)	Not reported	3 (2003); 32.5 (2012)	66.5

* National Central Center started collecting data from 56 regional registries since 2006, which did not include the Hong Kong registry.

† All types of cancer.

‡ Either self-financed private breast screening programs or partially subsidized by the government.

§ Women age 40 to 44 years are covered only when having family history of breast cancer within second degree.

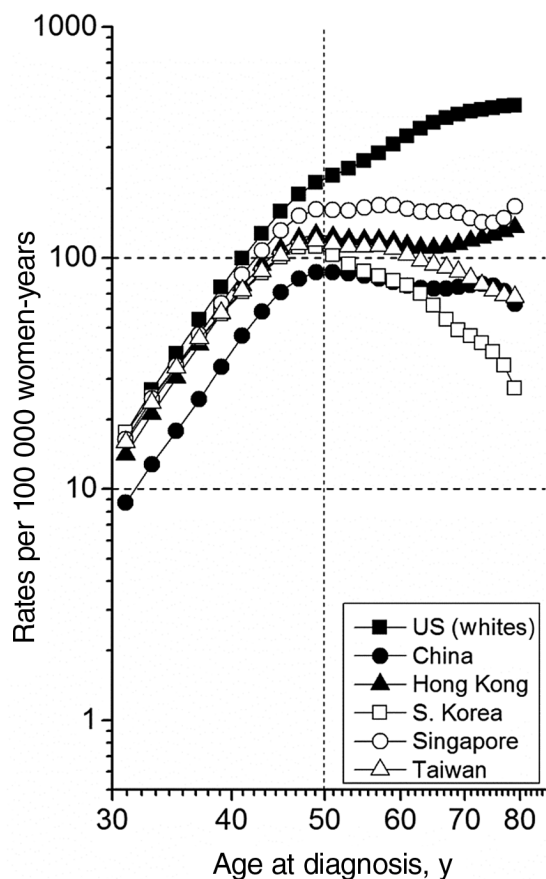


Figure 1. Cross-sectional age-specific breast cancer incidence rates. The age-specific incidence rates are plotted as log rates by log age over the entire study period.

cross-sectional age incidence curve rose rapidly with advancing age until age 50 years, then continued to rise at a slower pace, peaking around 460 per 100 000 women-years near age 80 years. In contrast, cross-sectional rates in Asian countries either plateaued after age 50 years such as in Singapore and Hong Kong with a slight increase near age 80 years, or declined continuously in Taiwan, China, and South Korea with peak incidence rates of 90 to 170 per 100 000 women-years. APC models were successfully fitted to the observed country-level data, and the goodness of fit was confirmed by examining the consistency of the observed to the fitted age-specific incidence rates, as previously described (28).

From 1988 to 2009, overall ASRs ranged from 59.3 to 206.3 per 100 000 women-years from China to the United States (Table 1). Among US white women, the overall ASR declined slightly with an EAPC of -0.24% per year (95% CI = -0.31 to -0.17) with qualitatively similar annual percentage changes across age groups (Figure 2). In contrast, the overall ASRs rose among all Asian countries with significant EAPCs (Table 1) and also increased across age groups with steeper rates of change among women age 50 years or older than younger than age 50 years (Figure 2). South Korea had the highest EAPC of 6.38% per year (95% CI = 5.98 to 6.79), followed by Taiwan, Singapore, China, and Hong Kong. Corresponding net drifts showed the same ranking and ranges as the EAPCs, with the highest net drift observed in South Korea at 6.99% per year (95% CI = 6.71 to 7.28) and the lowest in Hong Kong at 1.99% per year (95% CI = 1.81 to 2.18) (Table 1). Across all age groups, the ASRs rose rapidly in South Korea and Taiwan, consistent with their high overall net drifts. Notably, the rates among women age 30 to 49 years in all Asian countries attained

values similar to rates among US white women in recent years, except for China.

Figure 3 shows longitudinal age incidence curves for successive birth cohorts (Figure 3, A-C) and relative incidence rates in Asian countries/regions compared with the United States expressed as IRRs (Figure 3, D-F). Longitudinal age-specific rates were proportional (similar) among all Asian countries and the United States, with incidence rates rising continuously until age 80 years. Among US white women, the shape of the longitudinal age-specific incidence curve was similar to the cross-sectional curve (Figure 1) across all reference birth cohorts (Figure 3, A-C). However, among Asian women, in contrast to the cross-sectional rates, (Figure 1), the extrapolated longitudinal rates rose continuously with advancing age across all birth cohorts (Figure 3, A-C). Notably, estimates for the youngest birth cohorts in Taiwan, South Korea, and Singapore showed even later ages at onset than in the United States (Figure 3C). Furthermore, IRRs between Asian countries vs the United States approached 1.0 (ie, narrowed and/or converged) over the successive birth cohorts (Figure 3, D-F). For the 1920 cohort (Figure 3D), IRRs ranged from as low as 0.05 in South Korea (95% CI = 0.04 to 0.07) to 0.28 in Singapore (95% CI = 0.23 to 0.34). However, for the 1970 birth cohort (Figure 3F), IRRs ranged from 0.43 in China (95% CI = 0.39 to 0.47) to as high as 1.02 in Taiwan (95% CI = 0.93 to 1.12).

Discussion

The age-specific incidence of invasive female breast cancers among Asian countries/regions and the United States appears more proportional (or similar) when analyzed with longitudinal (forward-looking or prospective) than cross-sectional methods. These results suggest that the age effects of breast cancer may be more similar between Asian and Western women than previously recognized. In fact, the cross-sectional age incidence curves can be heavily biased by substantial EAPCs and therefore do not represent what is observed in the longitudinal follow-up. Importantly, our analysis also indicates that the difference between age incidence curves is narrowing with IRRs approaching 1.0 between all five Asian countries/regions and the United States over successive birth cohorts. Specifically, the most recent birth cohorts in Taiwan, South Korea, and Singapore showed even later ages at onset than in the United States.

Net drift is conceptually similar to the EAPC of the ASR, quantifying the sum of the linear trend in calendar-period and birth cohort effects. All Asian populations/regions examined here had substantially high net drifts, ranging from 2.0% to 7.0% per year from Hong Kong to South Korea. Steep rates of increase have also been reported in Japan with EAPC values of 4.2% and 2.2% per year during the time periods 1968–1985 and 1985–2003 (29). Furthermore, in Japan, cross-sectional age-incidence curves were also similar to other Asian countries (2,6).

Unfortunately, because of the so-called nonidentifiability issue of the age-period-cohort model (19), the net drift cannot separate the linear component of birth cohort effects (ie, changing exposures) from the linear component of calendar-period effects (screening, case ascertainment, etc.). Previous studies in Japan (24), Hong Kong (11,25), Singapore (10,30), and Taiwan (12) suggested that rising breast cancer incidence was largely attributable to substantial birth cohort changes because of the adoption of a westernized lifestyle. Indeed, changes in reproductive risk factors such as earlier age at menarche (31), delayed age at first birth, low parity, reduced breastfeeding, and declining fertility rates (10,30,31) could contribute to generational (or birth cohort) effects. Notably, family planning campaigns in Singapore and South Korea (1960s through 1980s) and the

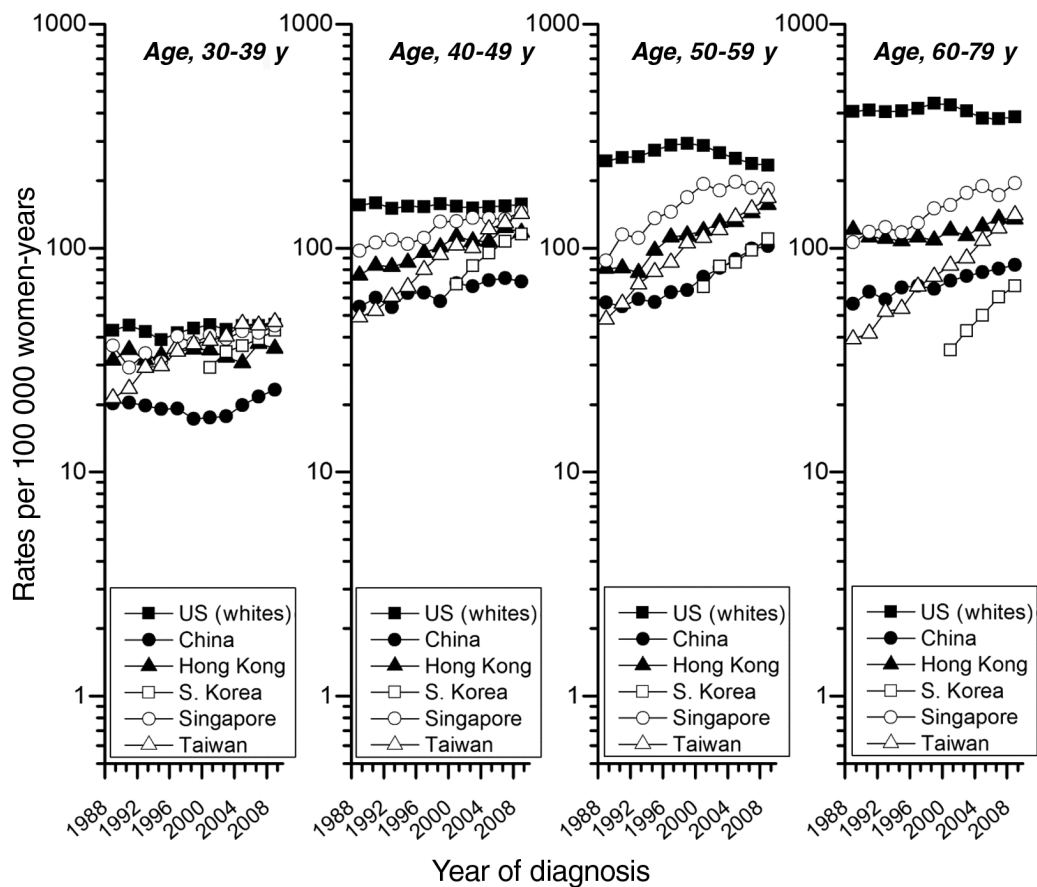


Figure 2. Trends in age-standardized incidence rates of breast cancer by age group from 1988 through 2009.

one-child policy in China (from the 1980s to the present) to curb increasing population growth might have substantial impact on the decline in fertility rates (10,16). Indeed, the total fertility rate decreased from five to six children per woman in the 1960s to 1.2 children per woman in Hong Kong, South Korea, and Singapore and 1.6 in China by the early 2010s (32). Dietary shifts towards fats and animal-source foods (33) as well as the trend toward increasing body mass index also could raise breast cancer risk among Asian women.

Moreover, we cannot exclude a calendar-period or screening effect, particularly in South Korea (34), Singapore (35), and Taiwan (36) where population-based screening programs were implemented between the late 1990s and early 2000s and have been effectively executed in more recent years (Table 1). In particular, women born between the 1960s and 1970s, who were in their 40s between 2000 and 2010, would be the first generation influenced by population-based screening programs. Accordingly, this would be reflected in the 1970 birth cohort-specific rates which were comparable or even higher in South Korea, Singapore, and Taiwan than in the United States (Figure 3, C and F). Considering that initial screening may detect an undiagnosed reservoir of preclinical breast cancers, high net drifts could be at least partly because of the screening effect, even though many of the younger women and populations included in this study were not eligible for organized screening programs. Moreover, rapid case ascertainment in a new and expanding cancer registry might also partially account for some of the high drift in Asian countries, especially in China where the nationwide cancer registry began relatively

later than other countries and coverage varied over the study period. Changes towards early stages over time might reveal the relative impacts of screening, case ascertainment, and/or catchment artifacts, but unfortunately was beyond the scope of this manuscript and not feasible because stage data were not available.

Besides the usual concerns that are associated with registry-based retrospective and descriptive studies, the major limitation of our study is that the longitudinal age-specific rates were extrapolated from the age-period-cohort model. However, all of the data were fitted successfully (28). Additionally, low coverages of cancer registries in large territories such as China and the United States may limit the representativeness of the results. Nonetheless, all countries included in our analysis have high-quality nationwide cancer registries and the analyzed data met IARC standards for quality and comparability (Table 1). Hence, the results reported here are unlikely to be simply caused by artifacts of an increasing catchment over time.

In summary, the shape of the longitudinal age incidence curves studied for breast cancer in Asian countries appears proportional or similar to that of the United States. Furthermore, our analysis suggests that breast cancer incidence rates in recent cohorts (generations) in Asian countries are converging and even surpassing the historically high rates in the United States, highlighting an urgent need for efficient prevention and treatment strategies among Asian populations. Finally, our results highlight the importance of using longitudinal rather than cross-sectional curves when comparing age incidence patterns in different populations in

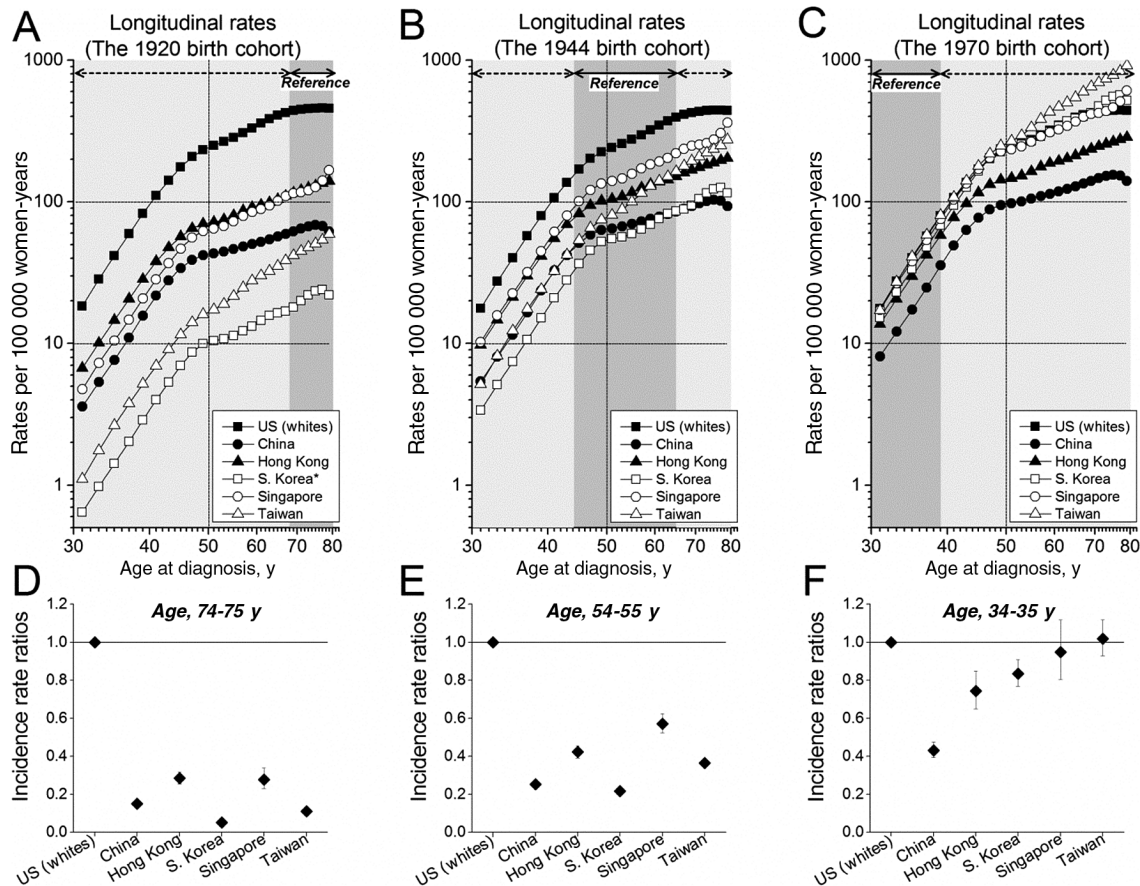


Figure 3. Longitudinal age-specific breast cancer incidence rates and corresponding incidence rate ratios. **A)** 1920 birth cohort. **B)** 1944 birth cohort. **C)** 1970 birth cohort. The longitudinal rates are plotted as log rates by log age, adjusted for calendar-period effects and conditioned upon the reference birth cohort. **Shaded areas** represent the age groups for which each reference cohort was directly observed in the corresponding cancer registries; see text for further details. **D)** 1920 birth cohort. **E)** 1944 birth cohort. **F)** 1970 birth cohort. The IRR calculation was based upon the central age group in each shaded area with the US whites arbitrarily assigned an IRR of 1.0. *1922 birth cohort. IRR = incidence rate ratio.

the presence of high net drift values. Future analytic studies are needed to quantify the proportion of incidence rate increases in Asian countries that are attributable to calendar-period and/or screening vs birth cohort effects, and to investigate the impact of these changes upon the distribution of the breast cancer molecular subtypes.

Funding

This research was supported by the Intramural Research Program of the National Institutes of Health, National Cancer Institute, Division of Cancer Epidemiology and Genetics.

Notes

The study sponsor had no role in the study design, the data collection, analysis, and interpretation, the writing of the report, or the decision to submit the manuscript for publication.

All authors have no conflicts of interest to declare.

References

- Ferlay J, Soerjomataram I, Ervik M, et al. GLOBOCAN 2012 v1.0, Cancer Incidence and Mortality Worldwide: IARC CancerBase No. 11 (Internet). Lyon, France: International Agency for Research on Cancer; 2013. Available from: <http://globocan.iarc.fr>. Accessed June 6, 2014.
- Shin HR, Joubert C, Boniol M, et al. Recent trends and patterns in breast cancer incidence among Eastern and Southeastern Asian women. *Cancer Causes Control*. 2010;21(11):1777–1785.
- Bray F, McCarron P, Parkin DM. The changing global patterns of female breast cancer incidence and mortality. *Breast Cancer Res*. 2004;6(6):229–239.
- Lin CH, Chen YC, Chiang CJ, et al. The emerging epidemic of estrogen-related cancers in young women in a developing Asian country. *Int J Cancer*. 2012;130(11):2629–2637.
- Liu L, Zhang J, Wu AH, et al. Invasive breast cancer incidence trends by detailed race/ethnicity and age. *Int J Cancer*. 2012;130(2):395–404.
- Althuis MD, Dozier JM, Anderson WF, et al. Global trends in breast cancer incidence and mortality 1973–1997. *Int J Epidemiol*. 2005;34(2):405–412.
- Anderson WF, Chatterjee N, Ersler WB, et al. Estrogen receptor breast cancer phenotypes in the surveillance, epidemiology, and end results database. *Breast Cancer Res Treat*. 2002;76(1):27–36.
- Leong SPL, Shen ZZ, Liu TJ, et al. Is Breast Cancer the Same Disease in Asian and Western Countries? *World J Surg*. 2010;34(10):2308–2324.
- Moolgavkar SH, Stevens RG, Lee JA. Effect of age on incidence of breast cancer in females. *J Natl Cancer Inst*. 1979;62(3):493–501.
- Chia KS, Reilly M, Tan CS, et al. Profound changes in breast cancer incidence may reflect changes into a Westernized lifestyle: a comparative population-based study in Singapore and Sweden. *Int J Cancer*. 2005;113(2):302–306.
- Wong IO, Cowling BJ, Schooling CM, et al. Age-period-cohort projections of breast cancer incidence in a rapidly transitioning Chinese population. *Int J Cancer*. 2007;121(7):1556–1563.
- Shen YC, Chang CJ, Hsu C, et al. Significant difference in the trends of female breast cancer incidence between Taiwanese and Caucasian Americans: implications from age-period-cohort analysis. *Cancer Epidemiol Biomarkers Prev*. 2005;14(8):1986–1990.
- Matsuno RK, Anderson WF, Yamamoto S, et al. Early- and late-onset breast cancer types among women in the United States and Japan. *Cancer Epidemiol Biomarkers Prev*. 2007;16(7):1437–1442.
- Lin CH, Liau JY, Lu YS, et al. Molecular Subtypes of Breast Cancer Emerging in Young Women in Taiwan: Evidence for More Than Just Westernization as a Reason for the Disease in Asia. *Cancer Epidemiol Biomarkers Prev*. 2009;18(6):1807–1814.
- Hemminki K, Mousavi SM, Sundquist J, et al. Does the Breast Cancer Age at Diagnosis Differ by Ethnicity? A Study on Immigrants to Sweden. *Oncologist*. 2011;16(2):146–154.

16. Fan L, Strasser-Weippl K, Li JJ, et al. Breast cancer in China. *Lancet Oncol*. 2014;15(7):e279–e289.
17. Rosenberg PS, Anderson WF. Age-period-cohort models in cancer surveillance research: ready for prime time? *Cancer Epidemiol Biomarkers Prev*. 2011;20(7):1263–1268.
18. Parkin DM, Bray FI, Devesa SS. Cancer burden in the year 2000. The global picture. *Eur J Cancer*. 2001;37(Suppl 8):S4–S66.
19. Holford TR. The estimation of age, period and cohort effects for vital rates. *Biometrics*. 1983;39(2):311–324.
20. Surveillance, Epidemiology, and End Results (SEER) Program SEER*Stat Database: Incidence - SEER 9 Regs Research Data, Nov 2012 Sub (1973–2010) <Katrina/Rita Population Adjustment> - Linked To County Attributes - Total U.S., 1969–2011 Counties, National Cancer Institute, DCCPS, Surveillance Research Program, Surveillance Systems Branch, released April 2013, based on the November 2012 submission. www.seer.cancer.gov. Accessed June 6, 2014.
21. Jung KW, Won YJ, Kong HJ, et al. Cancer Statistics in Korea: Incidence, Mortality, Survival and Prevalence in 2010. *Cancer Res Treat*. 2013;45(1):1–14.
22. Trends in Cancer Incidence in Singapore 1968–2007. Singapore. Cancer Registry, Report No. 7; https://www.nrdo.gov.sg/uploadedFiles/NRDO/Publications/inc_report_v8.pdf. 2010. Accessed June 6, 2014.
23. Wei KR, Chen WQ, Zhang SW, et al. Cancer registration in the Peoples Republic of China. *Asian Pac J Cancer Prev*. 2012;13(8):4209–4214.
24. Minami Y, Tsubono Y, Nishino Y, et al. The increase of female breast cancer incidence in Japan: emergence of birth cohort effect. *Int J Cancer*. 2004;108(6):901–906.
25. Leung GM, Thach TQ, Lam TH, et al. Trends in breast cancer incidence in Hong Kong between 1973 and 1999: an age-period-cohort analysis (vol 88, pg 2006, 2003). *Br J Cancer*. 2003;88(12).
26. Siegel JS, David A, Swanson DA. In Mortality. In: *The Methods and Materials of Demography*, 2nd ed. Emerald Group Publishing; 2004:291:215.
27. Kim HJ, Fay MP, Feuer EJ, et al. Permutation tests for jointpoint regression with applications to cancer rates. *Stat Med*. 2000;19(3):335–351.
28. Jemal A, Ma JM, Rosenberg PS, et al. Increasing Lung Cancer Death Rates Among Young Women in Southern and Midwestern States. *J Clin Oncol*. 2012;30(22):2739–2744.
29. Ito Y, Ioka A, Nakayama T, et al. Comparison of trends in cancer incidence and mortality in Osaka, Japan, using an age-period-cohort model. *Asian Pac J Cancer Prev*. 2011;12(4):879–888.
30. Sim XL, Ali RA, Wedren S, et al. Ethnic differences in the time trend of female breast cancer incidence: Singapore, 1968–2002. *BMC Cancer*. 2006;6.
31. Ko BS, Noh WC, Kang SS, et al. Changing patterns in the clinical characteristics of Korean breast cancer from 1996–2010 using an online nationwide breast cancer database. *J Breast Cancer*. 2012;15(4):393–400.
32. Total fertility rate (births per woman) WDI, The World Bank <http://data.worldbank.org/indicator/SP.DYN.TFRT.IN>. Accessed June 6, 2014.
33. Zhai FY, Du SF, Wang ZH, et al. Dynamics of the Chinese diet and the role of urbanicity, 1991–2011. *Obes Rev*. 2014;15(Suppl 1):16–26.
34. Suh M, Choi KS, Lee YY, et al. Trends in Cancer Screening Rates among Korean Men and Women: Results from the Korean National Cancer Screening Survey, 2004–2012. *Cancer Res Treat*. 2013;45(2):86–94.
35. Tan SM, Evans AJ, Lam TP, et al. How relevant is breast cancer screening in the Asia/Pacific region? *Breast*. 2007;16(2):113–119.
36. Wu TY, Chung S, Yeh MC, et al. Understanding Breast Cancer Screening Practices in Taiwan: a Country with Universal Health Care. *Asian Pac J Cancer Prev*. 2012;13(9):4289–4294.
37. Kwong A, Cheung PS, Wong AY, et al. The acceptance and feasibility of breast cancer screening in the East. *Breast*. 2008;17(1):42–50.
38. Suh M, Choi KS, Lee YY, et al. Cancer screening in Korea, 2012: results from the Korean National Cancer Screening Survey. *Asian Pac J Cancer Prev*. 2013;14(11):6459–6463.
39. Wang SC. The Singapore National Breast Screening Programme: principles and implementation. *Ann Acad Med Singapore*. 2003;32(4):466–476.
40. BreastScreen Singapore. <http://www.hpb.gov.sg/HOPPortal/programmes/article/3324>. Accessed June 6, 2014.
41. Wu GH, Chen LS, Chang KJ, et al. Evolution of breast cancer screening in countries with intermediate and increasing incidence of breast cancer. *J Med Screen*. 2006;13(Suppl 1):S23–S27.
42. Lin SJ. Factors influencing the uptake of screening services for breast and cervical cancer in Taiwan. *J R Soc Promot Health*. 2008;128(6):327–334.
43. Breast Cancer Surveillance Consortium. <http://breastcancer.gov/>. Accessed June 6, 2014.
44. International Cancer Screening Network. <http://appliedresearch.cancer.gov/icsn/breast/screening.html>. Accessed June 6, 2014.