

VLA imaging of the XMM-LSS/VIDEO deep field at 1–2 GHz

I. Heywood¹,^{2,3}★ C. L. Hale^{1,4} M. J. Jarvis^{1,5} S. Makhathini,^{2,3} J. A. Peters,¹
M. L. L. Sebokolodi^{2,6} and O. M. Smirnov^{2,3}

¹*Astrophysics, Department of Physics, University of Oxford, Keble Road, Oxford OX1 3RH, UK*

²*Department of Physics and Electronics, Rhodes University, PO Box 94, Makhanda 6140, South Africa*

³*South African Radio Astronomy Observatory, 2 Fir Street, Black River Park, Observatory, Cape Town 7925, South Africa*

⁴*CSIRO Astronomy and Space Science, PO Box 1130, Bentley, WA 6102, Australia*

⁵*Physics Department, University of the Western Cape, Private Bag X17, Bellville 7535, South Africa*

⁶*National Radio Astronomy Observatory, PO Box 0, Socorro, NM 87801, USA*

Accepted 2020 June 10. Received 2020 June 9; in original form 2019 June 25

ABSTRACT

Modern radio telescopes are routinely reaching depths where normal star-forming galaxies are the dominant observed population. Realizing the potential of radio as a tracer of star formation and black hole activity over cosmic time involves achieving such depths over representative volumes, with radio forming part of a larger multiwavelength campaign. In pursuit of this, we used the Karl G. Jansky Very Large Array (VLA) to image $\sim 5 \text{ deg}^2$ of the VIDEO/XMM-LSS extragalactic deep field at 1–2 GHz. We achieve a median depth of $16 \mu\text{Jy beam}^{-1}$ with an angular resolution of 4.5 arcsec. Comparisons with existing radio observations of XMM-LSS showcase the improved survey speed of the upgraded VLA: we cover 2.5 times the area and increase the depth by ~ 20 per cent in 40 per cent of the time. Direction-dependent calibration and wide-field imaging were required to suppress the error patterns from off-axis sources of even modest brightness. We derive a catalogue containing 5762 sources from the final mosaic. Sub-band imaging provides in-band spectral indices for 3458 (60 per cent) sources, with the average spectrum becoming flatter than the canonical synchrotron slope below 1 mJy. Positional and flux density accuracy of the observations, and the differential source counts are in excellent agreement with those of existing measurements. A public release of the images and catalogue accompanies this article.

Key words: techniques: interferometric – radio continuum: galaxies.

1 INTRODUCTION

Traditionally, the focus of radio continuum surveys has been on finding and studying the radio-loud active galactic nucleus (AGN) populations over the history of the Universe, and more recently the impact that such radio-powerful objects have on their host galaxy and immediate environment. However, this focus is beginning to change as we move towards ever-deeper radio continuum surveys. This is due to the fact that at $S_{1.4\text{GHz}} \lesssim 100 \mu\text{Jy}$ the composition of the radio source population begins to change from being AGN-dominated to being composed predominantly of star-forming galaxies (SFGs) and radio-quiet AGNs (e.g. Jarvis & Rawlings 2004; White et al. 2015).

Deep radio continuum surveys are therefore opening up a new window on what is usually considered the ‘normal’ galaxy population. Radio observations of such SFGs are important, as they have the potential to provide a relatively unbiased view of the time-

averaged star formation rate (SFR). This is due to the fact that supernovae are co-located with regions of massive star formation, and when electrons traverse their ageing shock fronts they decelerate rapidly, producing synchrotron radiation (Condon 1992).

Thus, over the past decade there have been many efforts to obtain deep radio continuum data over representative volumes of the Universe. Leading the way was the original VLA-COSMOS survey (Schinnerer et al. 2007) that used the Karl G. Jansky Very Large Array (VLA) at L band (~ 1.4 GHz). This has been succeeded by similar surveys spanning an order of magnitude in radio frequency, using the Giant Metrewave Radio Telescope (GMRT; e.g. Bondi et al. 2007; Ibar et al. 2009), the Australia Telescope Compact Array (ATCA; e.g. Middelberg et al. 2008; Franzen et al. 2015), and the upgraded VLA that has recently been used to revisit the COSMOS field at 3 GHz (Smolčić et al. 2017).

The key aims of surveys such as those listed above, as well as future approved and proposed surveys with the SKA and its precursors (e.g. Norris et al. 2011; Jarvis et al. 2015; Prandoni & Seymour 2015; Jarvis et al. 2016), are to understand the link between AGN activity and the host galaxy properties, to trace the

* E-mail: ian.heywood@physics.ox.ac.uk

star formation history of the Universe and the evolution in the star formation main sequence (e.g. Daddi et al. 2007; Noeske et al. 2007; Whitaker et al. 2012; Johnston et al. 2015). Radio observations are free from obscuration by dust (cf. ultraviolet tracers), and are generally not confused and/or suffer from low angular resolution (cf. *Herschel* and SCUBA-2 surveys).

In order to achieve these goals, the radio observations must target fields in the sky with excellent multiwavelength coverage. This is because the radio data alone do not provide any information on the stellar mass of the galaxies or their redshifts, although this may soon change at least at $z < 0.6$ where HI will become a viable line for measuring redshifts from the same data as the continuum data (e.g. Fernández et al. 2013; Blyth et al. 2016; Jarvis et al. 2016; Maddox, Jarvis & Oosterloo 2016).

In this paper, we present a new survey with the VLA of the XMM-LSS-VIDEO field (Jarvis et al. 2013) at 1–2 GHz using the B-configuration. This survey represents one of the deepest ~ 5 deg² surveys of the radio sky (see also Prandoni et al. 2018). The target field has an exceptional range of multiwavelength imaging at optical (Gwyn 2012; Dark Energy Survey Collaboration 2016; Aihara et al. 2018), near-infrared (Jarvis et al. 2013), mid-infrared (Lonsdale et al. 2003; Mauduit et al. 2012), far-infrared (Oliver et al. 2012), and X-ray (Chen et al. 2018) wavelengths, as well as spectroscopy (Le Fèvre et al. 2013, 2015; Davies et al. 2018; Scodreggio et al. 2018), in addition to lower frequency radio observations (Smolčić et al. 2018; Hale et al. 2019b). Our survey also significantly extends the areal coverage over this field, which also incorporates the VVDS region (Bondi et al. 2003) and the UKIDSS-UDS field (Simpson et al. 2006).

The paper is organized as follows. In Section 2, we describe the observations and the data processing. In Section 3, we present the data products, including a spectral index (α)¹ image and a source catalogue generated using the PROFOUND software. We compare these observations with previous radio surveys in Section 4 and present the source counts derived from the survey. In Section 5, we briefly summarize our findings and provide a link from where the data products may be freely downloaded.

2 OBSERVATIONS AND DATA PROCESSING

The observations² were conducted using the VLA in B-configuration. A single 1.5 h Scheduling Block (SB) was submitted for each of the 32 pointings, containing the necessary calibrator scans, as well as scans of the science target. The on-source observation time for each target pointing was 67.5 m, with 3 s per correlator integration. The correlator was configured in standard wide-band continuum mode, with 0.994–2.018 GHz of spectral coverage split up into 16 MHz \times 64 MHz spectral windows (SPWs) for a total of 1024 channels.

Data were delivered from the observatory in a CASA format measurement set (MS) containing visibility data for the target and the primary and secondary calibrators. The primary calibrator was 3C 147, and was used to determine the absolute flux density scale using the models derived by Perley & Butler (2013) and solve for the bandpass shape. The secondary calibrator was J0217+0144 and this

was used to determine time-dependent complex gain corrections. Visits to this source were somewhat infrequent, reasoning that self-calibration of the target data would be both feasible and necessary. The description of the steps that follow were applied to each SB individually. The referenced calibrator corrections were derived and applied using the NRAO CASA pipeline.³ The pipeline also applied Hanning smoothing to the data, and made a first pass of automatic radio frequency interference (RFI) excision. Following this we examined the scans of the calibrator sources for any remaining RFI. Any gross features were flagged, and the pipeline was rerun from scratch. RFI was rife, with SPWs 5 and 6 (1.314–1.412 GHz) lost in many pointings, and SPWs 8 and 9 (1.506–1.634 GHz) discarded outright for all 32 pointings. Once the reference calibration steps were complete, the corrected visibilities for the target field were split into a single source MS ready for imaging and further calibration.

All imaging was performed using the WSCLEAN package (Ofringa et al. 2014), which makes use of the efficient w-snapshot algorithm (Humphreys & Cornwell 2011) to correct for the effects of using non-coplanar arrays to conduct wide-field imaging. Imaging parameters were the same for each run, using 12 000 \times 12 000 pixels with a scale of 0.7 arcsec to cover $2.33^\circ \times 2.33^\circ$. Images of this size were necessary to deconvolve and model confusing sources in the sidelobes of the primary beam. Briggs (1995) weighting was used in order to suppress the sidelobes in the point spread function (PSF), with the robustness parameter set to 0.0. The frequency dependence of the sky brightness distribution was captured by deconvolving in 4 MHz \times 256 MHz sub-bands. When searching for peaks of emission during the minor cycle WSCLEAN uses the full-band image, however deconvolution takes place in each of the sub-bands independently. A polynomial with a user-defined order (in this case 3) is fitted to the clean components and inverted into a visibility model for subtraction during the major cycle. At the end of the cleaning process, the final model is (optionally) inverted and written to the MODEL_DATA column of the MS for use in self-calibration.

An initial imaging run was performed with unconstrained deconvolution terminating at 50 000 iterations. We then used the PYBDSF (Mohan & Rafferty 2015) source finder to locate regions of significant emission in the image. PYBDSF works by estimating the spatial variation in the background noise level, and then identifying peaks that are some threshold (in this case 5) times the background. Once these are identified, a flood fill operation takes place down to a secondary threshold (in this case 3) times the background. These islands of emission are then decomposed into groups of point and Gaussian components.

The resulting catalogue was manually examined, and spurious features were removed. Essentially all of such features were associated with residual PSF-like structures in the image which were not successfully deconvolved due to calibration deficiencies. The positions and shapes of the components in the pruned catalogue were written into a blank FITS image for subsequent use as a Boolean cleaning mask.

Imaging was repeated with the mask being used to constrain the locations of the deconvolution. Having examined the behaviour of the value of the peak residual during the initial cleaning runs, the termination threshold was set at 35 000 iterations. Following this imaging run, the spectral visibility model derived from the polynomial fits to the clean component model was used to determine a set of complex gain corrections for both LL and RR polarizations

¹We adopt the convention that the flux density S is proportional to the observing frequency ν according to: $S \propto \nu^\alpha$.

²Project codes: 13B-308 and 15A-477, corresponding to observations taking place between 2013 November 28 and December 24 (all pointings except 18), and on 2015 April 21 (pointing 18).

³<https://science.nrao.edu/facilities/vla/data-processing/pipeline>

(only the diagonal terms the G-Jones matrix) via self-calibration. All calibration steps were performed using the MEQTREES package (Noordam & Smirnov 2010) using its implementation of the fast STEFCAL solver (Salvini & Wijnholds 2014).

Phase-only solutions were derived for every $300 \text{ s} \times 64 \text{ MHz}$ tile of data, the frequency interval corresponding to each SPW. Solutions were forbidden from extending over the gaps in the data where the secondary calibrator observations had taken place. The calibrated data were re-imaged and the cleaning mask was refined at this stage, necessary for example if the reduced error patterns around bright sources following self-calibration revealed new genuine emission. This procedure produced acceptable images for 5/32 pointings. Amplitude and phase self-calibration, with additional direction-dependent calibration was required for the rest of the data. Traditional direction-independent self-calibration proved inadequate for removing the error patterns associated with off-axis sources of even modest brightness. Off-axis sources are subjected to time, frequency, and direction-dependent complex gain perturbations due to the antenna primary beam response, and effect that is exacerbated by the large fractional bandwidth of the VLA, and potentially by second-order effects such as antenna pointing errors or wind loading (e.g. Smirnov 2011b; Heywood et al. 2013a).

Direction-dependent calibration was performed using the differential gains method (Smirnov 2011a). This is an inverse-modelling approach that can be thought of as a form of simultaneous peeling (e.g. Noordam 2004) that does not require an iterative approach, and is less prone to instabilities in the presence of confusing sources of similar brightness. Antenna-based complex gain terms (G) are derived as per traditional self-cal, based on an all-inclusive sky model, however additional solvable complex gain terms are derived for a subset of ‘problem’ sources in the model using a longer solution interval. These additional differential gain (dE) terms are fixed to unity for all other sources. A hybrid sky model was constructed for this purpose. Having identified the positions of the sources to which the dEs are to be applied, component-based models for these sources were derived by using PYBDSF to characterize the emission at those positions in each of the four sub-band images produced by WSCLEAN. The components at these positions in the model images were then masked, and visibilities based on these model images with the problem sources removed were written to the MODEL_DATA column of the MS by running WSCLEAN in predict mode. This step makes the process computationally cheaper, as computation of the direction-independent portion of the sky model is a one-time operation. MEQTREES was then used to solve for G and dE terms based on the pre-computed model, plus the component models that were predicted on the fly.

Solutions were derived on a per-SPW basis, with the same boundary conditions used for the phase-only solutions, and using the relevant component model for the dE terms. The solution intervals were 162 and 324 s for the G- and dE-terms, respectively. These were extended by a factor of 2 for SPWs 10–12 inclusive, and by a factor of 3 for SPWs 13–15 inclusive, in order to boost the signal to noise in the solutions. Note that SPWs are zero-indexed. The cleaning masks were again refined at this stage, if required.

Fig. 1 shows the improvements in image quality gained by applying the directional calibration. The four rows correspond to four different sources in pointing 1. Top to bottom, the sources are presented in increasing distance from the phase centre. All four sources are situated between the edge of the main lobe of the primary beam and the first sidelobe, depending on the frequency. Even with the primary beam attenuation these sources are of comparable apparent brightness, and are amongst the brightest sources in the

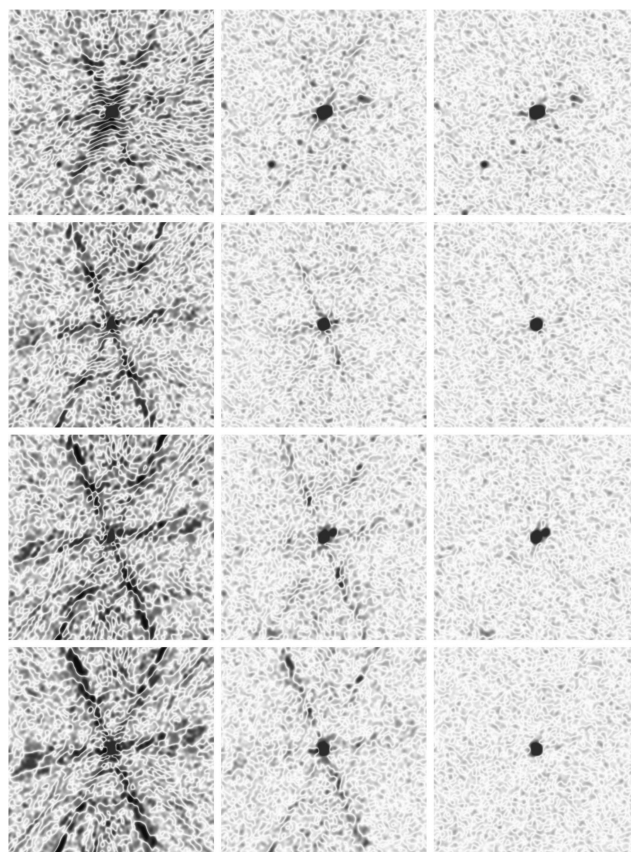


Figure 1. Three generations of calibration: the results of applying different calibration schemes are shown above for four sources (one per row) selected from pointing number 1. The left-hand column shows the sources as imaged following execution of the standard VLA pipeline that applies the referenced calibration. The central column shows the subsequent improvement afforded by traditional (amplitude and phase) self-calibration, and the right-hand column shows the final image achieved with self-calibration with additional solvable differential gain terms applied to the four sources. These sources are ordered top to bottom by increasing radial separation from the phase centre, and all four are located somewhere between the flank of the main lobe of the primary beam and the first sidelobe, depending on the frequency. Note the degradation in the performance of self-calibration with increasing distance from the phase centre, where the primary beam related direction-dependent effects can be expected to become more pronounced. The colour scale in this image saturates black at $\pm 0.2 \text{ mJy beam}^{-1}$, with white being zero.

image. The first column in Fig. 1 shows the *deconvolved* image produced following the application of the referenced calibration by the VLA pipeline. The second column shows the result of applying (amplitude and phase) self-calibration based on a model derived from the spectral component fitting performed by WSCLEAN. The third column shows the final image following the application of differential gain terms to these four sources. Note that the solution intervals for the G terms are the same for the second and third scenarios. The additional dE terms are required here to account for the differing time, frequency, and direction-dependent corruptions that these sources are subjected to due to their locations in the primary beam.

Once satisfactory calibration had been performed, the data were subjected to the final imaging procedure. This made use of the final cleaning masks, with an initial constrained clean, followed by a shallower (10 000–20 000 iterations, depending on the presence

of low-level extended structure) blind clean of the residual map with the mask removed. A thorough investigation of potential clean bias effects on broad-band VLA snapshot data has been made by Heywood et al. (2016). Briefly, clean (or snapshot) bias is a systematic error in the photometry measurements that is dependent on the brightness of the source being measured (e.g. Becker, White & Helfand 1995; Condon 1997; Huynh et al. 2005). It is thought to be related to the use of the clean algorithm for deconvolution, exacerbated by the strong linear features in the PSF of the VLA, and can even affect sources below the noise floor of the survey (White et al. 2007). The large-scale simulation conducted by Heywood et al. (2016) showed that constraining the deconvolution using masks significantly lessens the effect, but we can expect clean bias to exist at the few percent level close to the catalogue threshold, rapidly becoming negligible for brighter sources. Since a 5σ source will be subject to statistical fluctuations at the 20 per cent level by definition, no corrections have been made to the catalogue for these comparatively small clean bias effects. However, persons extracting photometric measurements close to the noise floor of the survey should be mindful that clean bias may be present at the tens of percent level, comparable to the noise-induced statistical uncertainties.

A circular 2D Gaussian restoring beam with a full width at half-maximum (FWHM) of 4.5 arcsec was applied to each image. This is marginally broader than the generally achievable angular resolution afforded by using the fitted restoring beam, however it accounts for the variations induced in the PSF by the dynamic scheduling of the observations, and imparts a desirable uniformity to the mosaicked image. Image-plane primary beam corrections were applied to the final full-band images, as well as each of the four sub-band images, by dividing each by a model image of the VLA primary beam computed at the appropriate frequency, and masked beyond the 30 per cent value. Linear mosaics of the 32 images were made using the MONTAGE⁴ package, with each pointing weighted by the assumed spatial noise variance image, in this case assumed to be represented by the square of the primary beam pattern.

3 DATA PRODUCTS

3.1 Total intensity mosaic

The total intensity mosaic is shown in the upper panel of Fig. 2, with each of the 32 pointing positions marked. The grey-scale is linear and runs from -20 (white) to $20 \mu\text{Jy beam}^{-1}$ (black). The lower panel shows a $1.2^\circ \times 0.6^\circ$ zoom on the same pixel scale, the corresponding region of which is marked by the dashed box in the upper panel.

3.2 Spectral index image

The frequency behaviour of the sky brightness distribution $I(\nu)$ is most commonly modelled as a power law in frequency

$$I(\nu) = I_0 \left(\frac{\nu}{\nu_0} \right)^\alpha, \quad (1)$$

where I_0 is the brightness at reference frequency ν_0 , and the exponent α is the spectral index. For most sources over our frequency range this is a reasonable assumption. Expressing this

in log-space gives

$$\ln I(\nu) = \ln I_0 + \alpha \ln \left(\frac{\nu}{\nu_0} \right). \quad (2)$$

Defining

$$x = \ln \frac{\nu}{\nu_0} \quad (3)$$

and

$$y = \ln I(\nu) \quad (4)$$

allows us to compute the spectral index α from N multifrequency brightness measurements according to

$$\alpha = \frac{\sum_i (x_i - \bar{x})(y_i - \bar{y})}{\sum_i (x_i - \bar{x})^2} \quad (5)$$

and with standard deviation

$$\sigma_\alpha = \sqrt{\frac{\sum_i (y_i - \bar{y})^2}{N}}, \quad (6)$$

where \bar{x} and \bar{y} are the mean values of x and y .

Sub-band imaging of the final calibrated data is used in order to produce the multifrequency brightness measurements required to produce an in-band spectral index image of the survey area. The 1–2 GHz band is divided up into three sections. Since SPWs 8 and 9 are discarded due to RFI in all of the 32 pointings, the LOW, MED, and HIGH sub-bands are formed from SPWs 0–3, 4–7, and 10–15 inclusive. These correspond to frequency ranges of 0.994–1.25, 1.25–1.506, and 1.634–2.018 GHz, and approximately equivalent fractional bandwidths of 23 per cent, 19 per cent, and 21 per cent. Each sub-band mosaic is formed in the same way as the full-band mosaic described in Section 3.1, with the primary beam correction and mosaic weighting functions set by patterns appropriate to the central frequency of the sub-band. The LOW and MED mosaics are cropped to only include the high-sensitivity region of HIGH, and the three images are placed into a cube with three frequency planes. The pixels in this cube are masked below $100 \mu\text{Jy beam}^{-1}$, corresponding to approximately 3σ – 4σ for a single sub-band, and following this a pixel-wise linear fit in log-flux/log-frequency space is performed. The best-fitting gradients to each three-point spectrum are then recorded as the value of spectral index (α) at that position, and the standard deviation in the measurements is recorded as an estimate of the spectral index error, as per equation (6). The end products of this process are maps of the spectral index and spectral index error, which we make further use of when constructing the component catalogue in Section 3.3.

3.3 Catalogue

The package PROFOUND (Robotham et al. 2018) was used to generate an associated source catalogue from the total intensity mosaic. Although designed for optical/near-infrared surveys, PROFOUND has been shown to be able to successfully model radio emission (Hale et al. 2019a) for sources of different morphologies. As PROFOUND does attempt to fit to any particular morphology (e.g. 2D Gaussians), complex morphologies (e.g. AGNs with extended jets) may be more faithfully modelled.

To extract the source catalogue, the method of Hale et al. (2019a) is followed. We use a `skycut` value of 3.5, which only includes pixels that have a value of $3.5\times$ the sky rms value at that pixel within a source segment. The segment defines all the pixels of a source that contribute to the model for the source. As the source

⁴<http://montage.ipac.caltech.edu/>

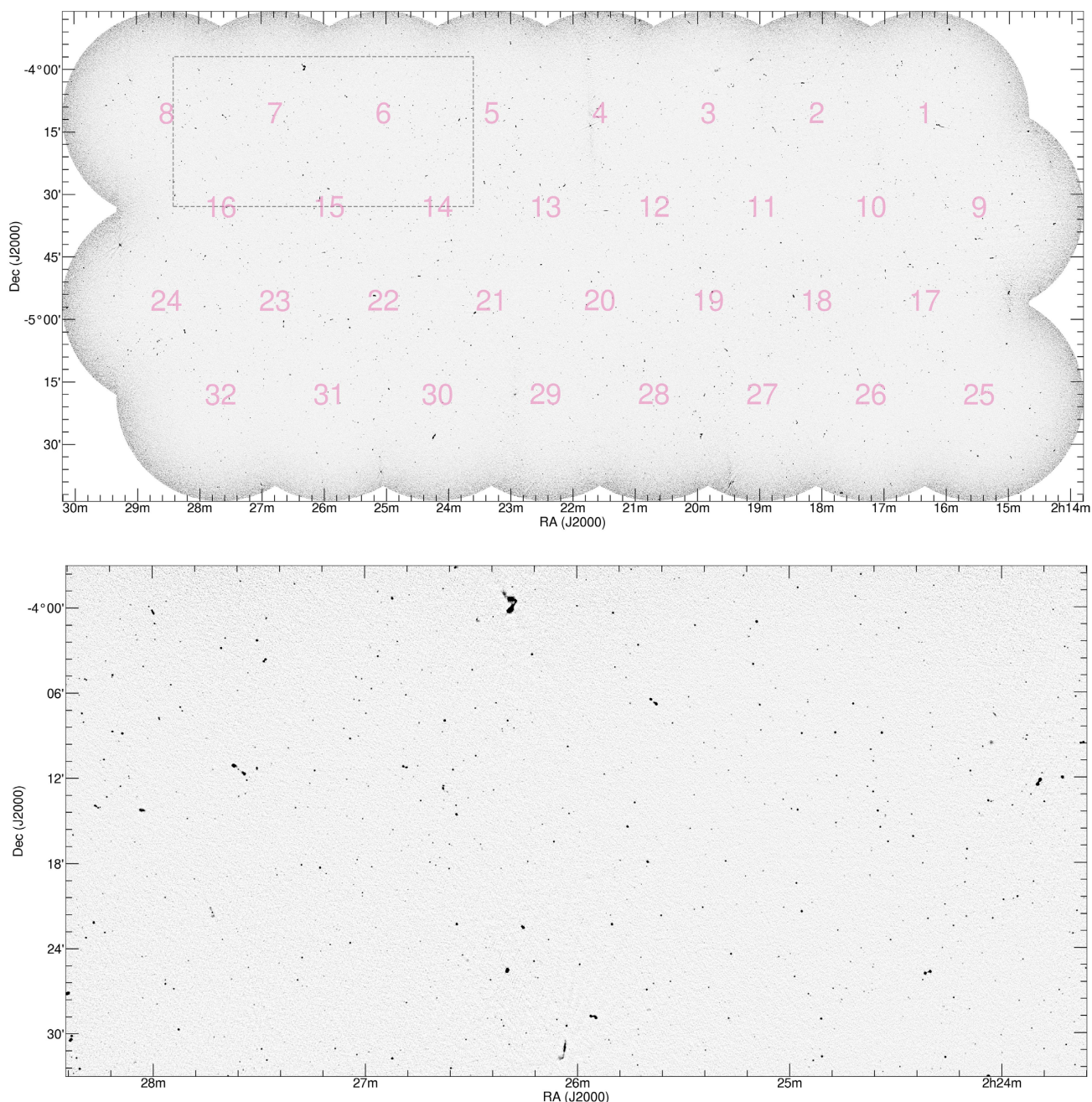


Figure 2. Total intensity image formed from a linear mosaic of the 32 primary beam-corrected images (upper panel), the locations of which are indicated. The grey-scale is linear and runs from -20 (white) to $200 \mu\text{Jy beam}^{-1}$ (black). A $1.2^\circ \times 0.6^\circ$ region is shown in the lower panel with the same pixel scale, the location of which within the full mosaic is marked on the upper panel.

density does not approach that of the classical confusion limit, the `groupstats=TRUE` setting is used to force neighbouring segments that share a segment boundary to be combined into a single source. This is especially important for resolved extended sources that for example have connected lobe emission, and ensures that (provided the emission is connected) these sources can be identified as a single source.

Following the method of Hale et al. (2019a), we apply a (restoring) beam correction to ensure that emission within the wings of the source (especially for faint point-like sources) is not missed. To do this, we take all segments below a given pixel threshold limit and investigate what fraction of the total flux contained within the

PSF beam and centred on the RA/Dec position of the source is contained within the source segment. We apply this correction to those sources that have a value of `N100` (the number of pixels in the segment found by `PROFOUND`) less than 225 pixels. This limit is chosen as 225 pixels in a 15×15 pixel box around a central PSF should contain ~ 99 per cent of the total flux within a PSF beam.

Using `PROFOUND` with these settings resulted in a catalogue of 7185 sources. We subsequently discard fitted regions where the peak flux density is below five times the noise value at the peak position of the source, resulting in a final catalogue of 5780 sources. After a visually examining images, we identified 13 sources for which multiple components (a total of 30) were actually a

Table 1. The first 10 rows from the radio source catalogue, presented here in order to show the table structure. Please refer to the text for a detailed description of each column. The full version of this table is available online as supplementary material.

	ID	RA	Dec	σ_{RA}	σ_{Dec}	RA _{peak}	Dec _{peak}	S _{int}	σ_{Sint}		
	(1)	(deg)	(deg)	(arcsec)	(arcsec)	(deg)	(deg)	(mJy)	(mJy)		
	(1)	(2)	(3)	(4)	(5)	(6)	(7)	(8)	(9)		
1	J022143.11–041344.6	35.42963	−4.22905	2.59	2.65	35.43002	−4.2294	469.39263	0.01424		
2	J022255.74–051817.5	35.73225	−5.30485	2.29	2.07	35.73219	−5.3048	269.69099	0.0188		
3	J022632.54–051328.8	36.63557	−5.22467	2.13	1.98	36.63563	−5.22469	71.48008	0.00953		
4	J022915.86–044216.7	37.31609	−4.70464	3.94	3.38	37.31561	−4.70498	272.04369	0.04092		
5	J021640.74–044404.4	34.16974	−4.73456	2.06	2.08	34.1698	−4.73445	60.58129	0.00945		
6	J021705.51–042253.1	34.27297	−4.38143	1.91	2.29	34.273	−4.38142	59.63392	0.01103		
7	J022310.19–042306.4	35.79245	−4.38512	1.95	1.98	35.79253	−4.38508	39.94858	0.00794		
8	J022754.85–045705.5	36.97856	−4.95152	2.24	2.0	36.9785	−4.95146	35.40523	0.00853		
9	J022357.09–044112.5	35.98789	−4.68682	1.99	2.35	35.98794	−4.68674	42.21077	0.00876		
10	J022505.11–053648.1	36.27128	−5.61335	2.2	2.44	36.27124	−5.61345	161.54529	0.03284		
	S _{peak}	σ_{Speak}	RMS.Peak	RMS.Mean	θ_{maj}	θ_{min}	PA	α	σ_{α}	ID2	ID3
	(mJy b ^{−1})	(mJy b ^{−1})	(mJy b ^{−1})	(mJy b ^{−1})	(arcsec)	(arcsec)	(deg)			(19)	(20)
	(10)	(11)	(12)	(13)	(14)	(15)	(16)	(17)	(18)	(19)	(20)
1	301.11002	0.00914	0.02774	0.02761	24.06	14.99	136.56	−0.62	0.16	–	–
2	232.57525	0.01621	0.02984	0.02973	23.57	21.31	95.65	−0.27	0.03	–	–
3	68.15745	0.00909	0.0185	0.01847	20.27	17.55	60.05	−0.65	0.21	–	–
4	153.31504	0.02306	0.05453	0.05453	32.7	18.35	53.51	–	–	–	–
5	52.00014	0.00811	0.02091	0.02088	17.02	16.45	34.36	−0.68	0.27	–	–
6	55.30472	0.01023	0.02289	0.02282	19.34	16.16	0.34	−0.69	0.15	–	–
7	37.44547	0.00744	0.01913	0.01915	15.77	14.88	38.87	−0.32	0.17	–	–
8	32.4521	0.00782	0.01786	0.01786	18.84	16.49	105.35	−0.42	0.10	–	–
9	33.05087	0.00686	0.01939	0.01936	18.47	15.06	17.55	−1.18	0.23	–	–
10	116.68966	0.02372	0.06663	0.06639	19.22	17.14	167.76	–	–	–	–

single association. For these sources, the associated components are recorded within the final table. In addition to these, 18 sources were deemed to be artefacts and were subsequently removed from the catalogue. Following this, a total of 5762 sources remained within the final catalogue. The properties of the first 10 sources from our final catalogue are shown in Table 1. The columns are defined as follows:

(1) Identifier for the component in HHMMSS.S+/-DDMMSS format, formed from the right ascension and declination position in the J2000 epoch.

(2)–(3) Flux-weighted right ascension and declination of the component in degrees taken from the RA_{cen} and Dec_{cen} columns from PROFOUND.

(4)–(5) Flux-weighted standard deviations in the right ascension and declination of the component, taken from the xsd and ysd columns from PROFOUND and converted into angular units using the pixel sizes. Note that this is significantly larger than the statistical uncertainty that can be obtained by fitting a point or Gaussian component, and is included here mainly for completeness.

(6)–(7) Right ascension and declination of the peak of the source in degrees taken from the RA_{max} and Dec_{max} columns from PROFOUND.

(8) Integrated flux density of the component in mJy. This is calculated using the PROFOUND flux column, converted to Jy (from Jy beam^{−1}), with an appropriate beam correction applied to compensate for the flux density contribution from the outer wings of the emission (see text).

(9) Error in the integrated flux density of the component in mJy. It is calculated similar to (3) but using flux_err instead of flux and applying the square root of the beam correction.

(10) Peak intensity of the component in mJy beam^{−1}. This is constructed from the PROFOUND catalogue as flux × cenfrac.

(11) Error in the peak intensity of the component in mJy beam^{−1}. It is calculated similar to (7) but using flux_err instead of flux.

(12) Rms value in the map at the peak position of the source (given by columns 6 and 7).

(13) Mean rms over the source segment using the skyRMS_mean column from PROFOUND.

(14) Major axis size of the segment and is quoted here as the 2 × R1.00 column from PROFOUND and converted to arcseconds.⁵

(15) Minor axis size of the segment and is quoted here as the 2 × R1.00 × axrat from PROFOUND and converted to arcseconds.

(16) Positional angle of the source in degrees given by the ang column from PROFOUND.

(17) Spectral index (α) estimate formed by extracting pixels from the spectral index map (Section 3.2) over the region corresponding to a given source as determined by PROFOUND. The mean of the spectral index value of the extracted pixels is determined, weighted by the total intensity values over the same area.

(18) Total intensity weighted standard deviation of α , measured over the corresponding PROFOUND region.

(19)–(20) IAU Source IDs of components that together with the entry in column (1) are part of a single radio source.

4 RESULTS AND DISCUSSION

In the sections that follow we compare the results presented in Sections 3.1 and 3.3 with existing radio data in order to validate these

⁵As this (and the minor axis size) are calculated based on the segment size, for faint sources comparable to the noise, the segment will be small and this size will be underestimated. These are also not comparable (in many cases) to sizes in previous radio catalogues, which are often quoted as FWHM values from Gaussian components.

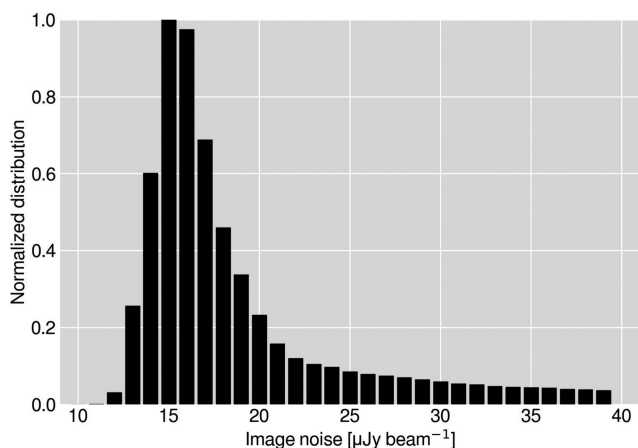


Figure 3. Normalized histogram of the pixel values in the rms image of the mosaic, taken to be a measurement of the background noise across the survey. The median noise is $16 \mu\text{Jy beam}^{-1}$.

data products. For positional and flux density checks (Sections 4.2 and 4.3), we make use of existing data covering the same field, namely the Faint Images of the Radio Sky at Twenty-cm (FIRST) survey (Becker et al. 1995), and radio imaging of the VLA-VIRMOS Deep Survey field (VVDS; Bondi et al. 2003), and Subaru-XMM/Newton Deep Field (SXDF; Simpson et al. 2006). For astrometric and photometric checks (Sections 4.2 and 4.3), we restrict the cross-match to sources that have no clear evidence of having extended morphology in order to minimize the effects of angular resolution differences.

4.1 Sensitivity

The sensitivity (or background noise level) of a radio mosaic at these frequencies is generally position dependent. This can be due to a range of factors, e.g. the increase of the noise at the periphery of the mosaic due to primary beam correction, calibration deficiencies leading to error patterns associated within bright sources (e.g. Fig. 1), residual sidelobe confusion due to incomplete deconvolution, and particularly problematic RFI in some pointings causing higher than normal data loss for that region. A convenient way to capture the sensitivity of the mosaic as a function of position is to make use of the rms noise map that is produced by the source finder in order to set its internal local detection thresholds. Fig. 3 shows the normalized histogram of the pixels in this rms image. The median rms noise is $16 \mu\text{Jy beam}^{-1}$, with 80 per cent of the mosaic area having a noise value of $<20 \mu\text{Jy beam}^{-1}$.

4.2 Astrometry

The accuracy to which the position of a component in a radio image can be measured depends on two factors (Condon 1997). The first is a statistical effect related to the signal-to-noise ratio (SNR) of the detection and the angular resolution of the instrument. The second is a systematic component coupled to accuracy of the astrometric reference frame that is applied to the data via the calibration. Both of these effects can be gauged by cross-matching positional measurements with those of suitable reference data, if such data are available. Ideally the reference set should have superior depth and angular resolution such that the statistical uncertainties are dominated by those of the survey under test. The systematic calibration-related component is best investigated by

using the strongest sources (e.g. phase calibrators) for which the statistical contribution in both data sets is negligible. In practice, and with many modern radio observations breaking new ground, the availability of suitable reference sets is limited, and typically relies on using a large-area survey to investigate the brighter sources that are common to both. The use of bright calibrator sources with excellent positional measurements is generally not feasible for deep and relatively narrow surveys such as the one presented here, however the astrometry of surveys such as FIRST and NVSS is validated against calibrator sources, so with a large enough sample of common sources any systematic offsets should be apparent.

We calculate offsets in right ascension and declination between the *peak* positions in our catalogue and the matched position in an external reference catalogue. Three external catalogues are employed, namely FIRST, VVDS, and SXDS. The distribution of these offsets is shown in Fig. 4. The inner ellipse is centred on the mean positional offset, and has minor and major axes showing ± 1 standard deviation in the distribution in right ascension and declination. The mean position and standard deviations are noted in the caption of Fig. 4, along with the number of matched components. The outer circle shows the FWHM of the 2D Gaussian restoring beam used during imaging. In each case the mean offsets are less than 1 arcsecond, corresponding to less than 25 per cent of the FWHM of the effective angular resolution of the final mosaic.

The tail of sources in the lower left of the SXDF panel on Fig. 4 was investigated further, and ~ 90 per cent of them were found to lie within the bounds of pointing 7 of the SXDF mosaic, suggesting an issue either with the calibration or image regridding for that particular pointing. The offsets between our catalogue positions and those of VVDS are noticeable compared to those of FIRST and SXDF, however given that we are consistent with the latter two we assume this is related to the VVDS calibration.

4.3 Photometry

The VLA has very accurate absolute flux calibration (of order 1 percent; Perley & Butler 2013) due to the use of well-modelled primary calibrator sources, in this case 3C 147. However, additional factors (e.g. subsequent referenced calibration and self-calibration problems, deconvolution biases, RFI) can skew the flux calibration. In Fig. 5, we compare the peak flux densities of our catalogues components with matched components drawn from the SXDS and VVDS catalogues. As with the positional checks there were 690 and 724 mutually compact sources for SXDF and VVDS, respectively.

Matched components are scattered about the 1:1 line where the catalogued and external component are equal, as shown as the diagonal on Fig. 5. The usual increase in scatter with decreasing peak intensity is seen. As the noise level becomes an increasingly large fraction of the component brightness temporally separate measurements of the same source will exhibit larger amounts of scatter. There is no obvious biasing of e.g. the fainter sources, as would be seen by a curve in the distribution of points about the 1:1 line.

A potential source of bias in the recovered flux density of sources is the application of inappropriate self-calibration. Since the sky model against which the instrument is calibrated is never fully complete, the contribution to the visibility function made by the unmodelled sources can potentially be absorbed by the antenna-based gain solutions, resulting in these unmodelled sources being suppressed in the final image. Mitigation of this effect can take the form of conservative time-frequency solution intervals, and minimizing the degrees of freedom. The latter issue is automatically

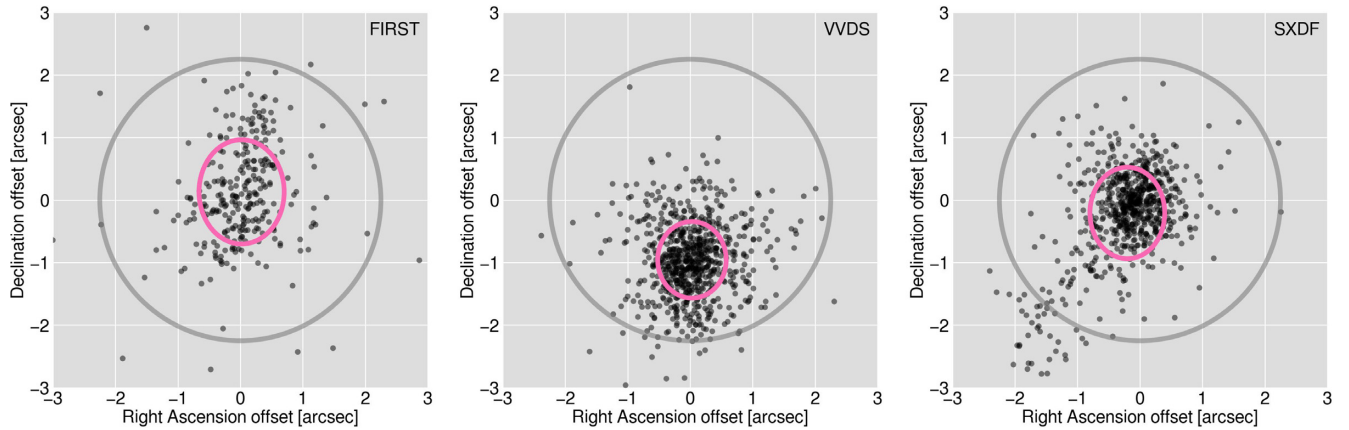


Figure 4. Differences in the *peak* right ascension and declination of components matched between the PROFOUND catalogue derived in Section 3.3 and an external reference data set. Left to right, the external references are FIRST (Becker et al. 1995), VVDS (Bondi et al. 2003), and SXDF (Simpson et al. 2006). The inner ellipse is centred on the mean positions of the offsets, and its major and minor axes are ± 1 standard deviation of the offsets in right ascension and declination. The outer circle shows the extent of the restoring beam used in our final mosaic. Systematic offsets are ~ 1 arcsec or better in all cases. The mean ± 1 standard deviation offsets in right ascension and declination with respect to the reference observations are as follows: FIRST (333 sources), RA offset 0.052 ± 0.561 arcsec, Dec offset 0.128 ± 0.793 arcsec; VVDS (724 sources), RA offset -0.004 ± 0.549 arcsec, Dec offset -0.944 ± 0.662 arcsec; SXDF (690 sources), RA offset -0.170 ± 0.613 arcsec, Dec offset -0.150 ± 0.729 arcsec.

addressed to some extent by virtue of the VLA having a high ratio of baselines (351) to antennas (27), which results in a correspondingly high ratio of equations to solvable parameters during calibration. However, the application of differential gains introduces two solvable parameters into the measurement equation for every additional direction that is being solved for, and extra care must be taken.

We check for the presence of systematic flux density biases introduced by the directional calibration process by comparing the flux densities of matched components in the images formed from the NRAO pipeline (i.e. maps for which no self-calibration has been applied) and those formed following the full direction-dependent calibration procedure. These are plotted in Fig. 6.

As with Fig. 5, this plot shows increased broadening of the distribution away from the diagonal line with decreasing values of component flux density. Note, however, that in this case the diagonal line is not simply the 1:1 line, but rather a fit to the data that is indistinguishable from the diagonal. A noise-like scattering of the points is to be expected, as self-calibration modifies the noise properties of the images. Systematic biasing of the flux density measurements (for example the often-seen suppression of faint sources that are not in the calibration model) would manifest itself as a curve in the distribution, for which no evidence is seen.

4.4 Spectral indices

The catalogued spectral index measurements (having their origins described in Sections 3.2 and 3.3) are shown in Fig. 7, with the corresponding integrated flux density plotted against them. The dashed line on this plot shows the limit where a source with a peak intensity in mJy beam^{-1} , concordant with the y-axis values and measured from the full-band mosaic, would drop below the threshold of any one of the three sub-bands used, and therefore not have a spectral index measurement in this survey. This line is evaluated for the full spectral index range of Fig. 7, and demonstrates that in-band spectral indices are subject to a spectral index dependent selection bias for sources with flux densities that

approach the survey detection threshold. The population of sources that lie above this line can thus be considered to be complete for plausible and typical spectral indices.

The mean spectral index of the sources in integrated flux density bins is measured, and these values are plotted in Fig. 7 with error bars that show ± 1 standard deviation. The mean spectral index values per bin are listed in Table 2. A tendency towards flatter mean spectral index measurements with decreasing flux density is seen, with the mean value changing from -0.6 to -0.4 over the order of magnitude drop in integrated flux density between 3.4 and 0.34 mJy (see also Table 2). This flattening trend is consistent with previously reported in-band measurements (e.g. Heywood et al. 2016) and dual-frequency measurements between 1.4 and 5 GHz (e.g. Prandoni et al. 2006), however we note that such a trend has not been seen in dual-frequency spectral index studies between 1.4 GHz and lower frequencies, e.g. the 610 MHz work of Ibar et al. (2009). Huynh et al. (2015) present a 5 GHz mosaic covering 0.34 deg^2 of the Extended Chandra Deep Field South to a depth of $8.6 \mu\text{Jy beam}^{-1}$, from which they match 167 sources with counterparts from 1.4 GHz VLA observations reaching $6 \mu\text{Jy beam}^{-1}$ (Miller et al. 2013). A flattening of the median spectral index (-0.58) is observed in the sub-mJy population, however a substantial fraction of flat or inverted spectrum radio sources is present.

4.5 Differential source counts and bias corrections

Next, we measure the differential source counts for these observations and compare them to previous work. Before comparisons can be made with previous studies it is important to correct the measured differential source counts, which will be underestimated especially at the faintest flux densities. This underestimation is due to several factors. First, the variations in the image sensitivity across the survey area means that faint sources will not be detectable in all regions of the image. Secondly, false detections whereby noise peaks are interpreted as true emission will affect the source counts in the faintest bins. Furthermore, sources for which any (positive or negative) coincident noise peak represents an appreciable fraction

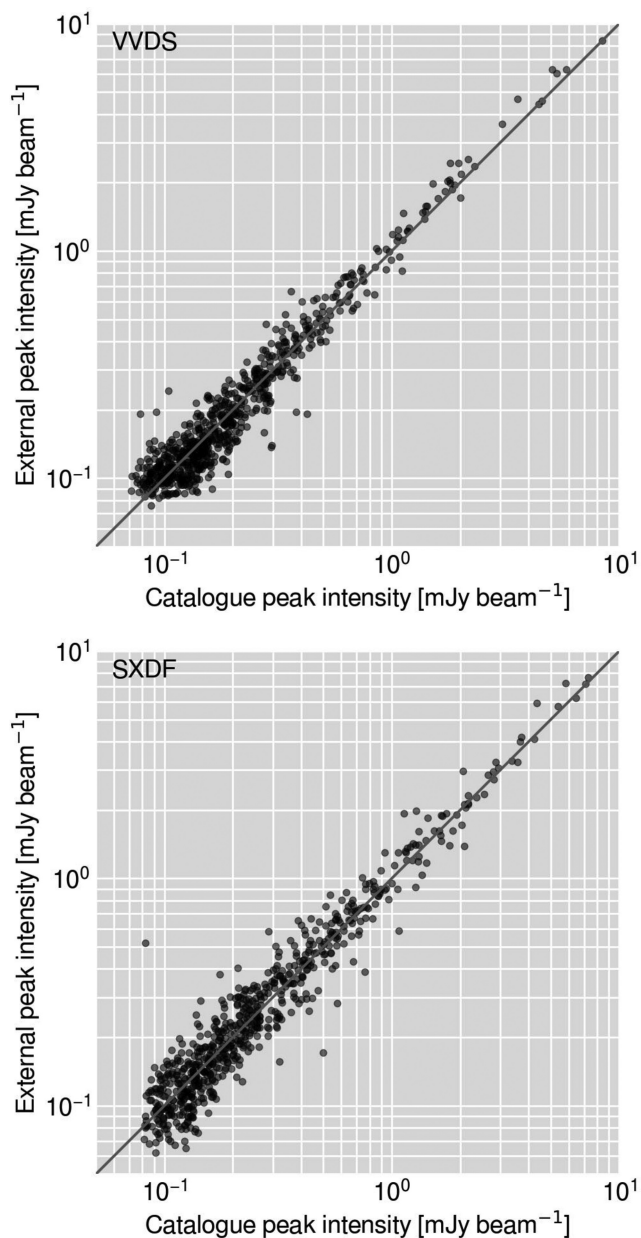


Figure 5. Comparison of the peak intensities from two external radio surveys, namely VVDS (Bondi et al. 2003) and SXDF (Simpson et al. 2006), plotted against the catalogued peak intensity from our survey.

of their total flux density may be redistributed into an adjacent bin (Eddington bias). The methods for determining the factors required to correct for these effects are described below.⁶

4.5.1 Completeness correction

First, we correct the measured source counts from the output catalogue for non-uniform detection across the field of view as well as results that may arise from source fluxes being influenced by noise peaks or troughs. To determine the necessary corrections, simulations are used to correct source counts as in Hale et al.

⁶The catalogues used to determine these corrections also have the 5σ criterion described in Section 3.3 imposed before the corrections is calculated.

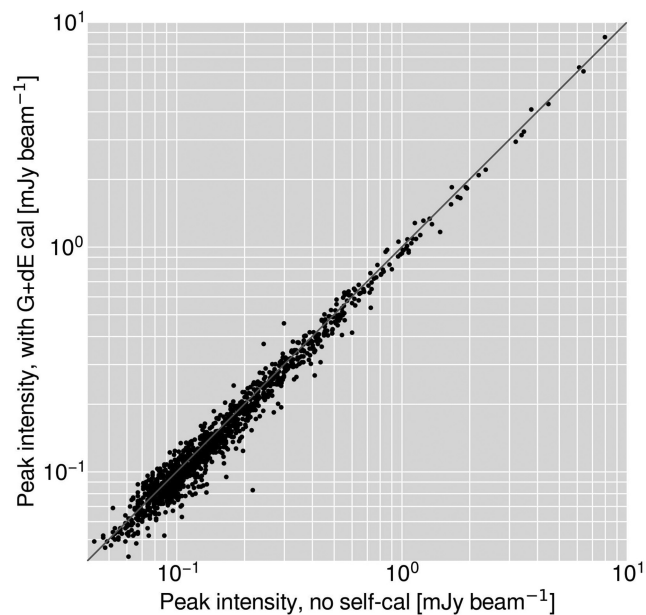


Figure 6. Peak intensities from the final calibrated maps of some individual pointings plotted against the peak intensities of matched components measured from maps that have not been subjected to any self-calibration, with only the referenced calibration applied. There is no evidence for any calibration-induced photometry biases. Note that the diagonal line here is a fit to the data points.

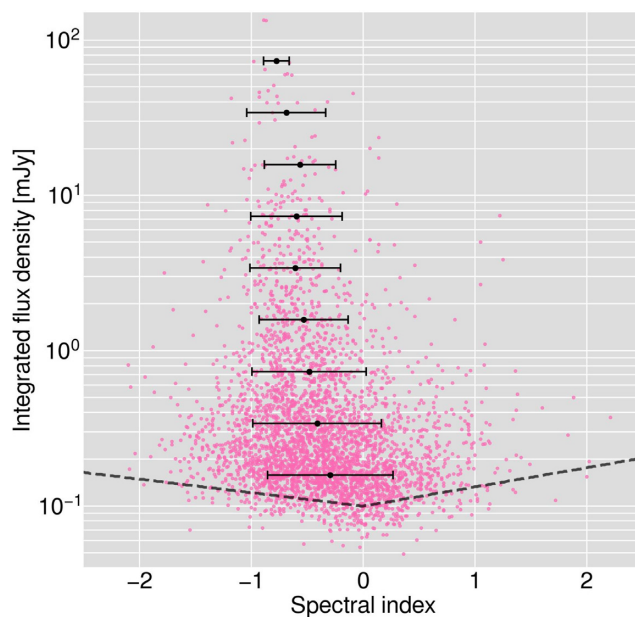


Figure 7. Integrated flux density measurement against source spectral index for the 3458 sources that have spectral index estimates. The black markers show the mean spectral index for the flux density bins listed in Table 2, with the error bars showing 1 standard deviation. The dashed line shows the theoretical peak flux density limit (as would be measured in the full-band image) below which a source of a given spectral index would drop out of one of the three sub-bands used to form the spectral index map. Sources above the entirety of this line can be assumed to be mostly free from signal-to-noise related selection biases for most common or plausible astrophysical radio spectra.

Table 2. Mean spectral index values of the N components with integrated flux densities within the range defined by S_{\min} (inclusive) and S_{\max} (with bin centre S). These values are plotted as black markers in Fig. 7. Further details are provided in Section 4.4.

N	S_{\min} (mJy b $^{-1}$)	S_{\max} (mJy b $^{-1}$)	S (mJy b $^{-1}$)	α_{med}	σ_{α}
1386	0.1	0.215	0.158	−0.293	0.562
984	0.215	0.464	0.34	−0.411	0.575
433	0.464	1.0	0.732	−0.483	0.511
217	1.0	2.154	1.577	−0.532	0.399
125	2.154	4.642	3.398	−0.606	0.405
80	4.642	10.0	7.321	−0.596	0.409
32	10.0	21.544	15.772	−0.563	0.318
18	21.544	46.416	33.98	−0.687	0.352
8	46.416	100.0	73.208	−0.774	0.115

(2019b) and the corrections determined are applied to this work. For this, simulated sources are injected into the image and then source extraction is run as in Section 3.3, this can be used to determine the recovery as a function of flux density. For each simulation, 1000 sources were injected at random positions within the image. Each of these sources has an associated flux density with the distribution drawn from the SKA Simulated Skies continuum simulation (S^3 ; Wilman et al. 2008, 2010), which provides realistic catalogues containing simulated extragalactic radio sources of various population types down to a flux limit of 10 nJy. The shapes of the injected sources are elliptical components, with the associated sizes also drawn from the S^3 simulations. For each simulated source randomly chosen, each elliptical component associated with the source is convolved with clean beam of these observations and then injected into the image.⁷ As this uses the size distribution of S^3 , this technique should also account for resolution effects where, for the same total flux density, larger sources will have a lower peak flux density per beam and therefore will be more challenging to detect above the noise threshold. Both single (radio-quiet AGN and SFGs) and multicomponent (FR I and FR II radio galaxies) sources are injected into the image provided that the total flux of the source is $\geq 3 \times \sigma$, where σ was taken as the typical rms of the observations (converted to a total flux assuming a point source), and was taken to be 16 $\mu\text{Jy beam}^{-1}$.

To determine the completeness from the simulation, we calculate the ratio of the output source count distribution to the input distribution. As the simulated sources are injected into the image, the observed (real) source count distribution measured from the image must first be subtracted. The completeness correction in a given flux density bin is therefore given by

$$C_{\text{COMP}}(S_i, S_i + dS_i) = \frac{N_{\text{sim, out}}(S_i, S_i + dS_i) - N_{\text{im}}(S_i, S_i + dS_i)}{N_{\text{sim, in}}(S_i, S_i + dS_i)}, \quad (7)$$

where $N_{\text{sim, out}}$ is the number of sources detected in the output simulated image above 5σ (as defined in Section 3.3), N_{im} is the number of sources within the original image, again above 5σ and finally $N_{\text{sim, in}}$ is the number of simulated sources within the given flux density bin that are injected into the image. As $N_{\text{sim, out}}$ will be

⁷ S^3 sources that had components of the largest sizes were not included, to ensure the lobes are not cut off when injecting into the image. Sources with sizes >50 arcsec were not included. Only a small fraction of S^3 sources were not included due to this limit and so are unlikely to have made a big difference to the corrections derived.

the combination of both the sources already in the image as well as those simulated sources that are recovered, the value of $N_{\text{sim, out}} - N_{\text{im}}$ will quantify those simulated sources that are recovered from the image. As sources that are injected into the image, these simulations may also take into account the fact that sources may merge with others in the image and only be detectable as an individual source.

We generated 100 realizations of the simulation and calculated the completeness corrections as the median value of these. The associated uncertainties that we quote with this are generated from the 16th and 84th percentiles of the completeness corrections for the 100 simulations. The inverse of these corrections will need to be applied to the measured source counts in order to correct for incompleteness.

4.5.2 False detection correction

To quantify the fraction of false detections in the image, we make the assumption that the noise across the image is symmetric and therefore every positive noise spike will on average have a corresponding noise decrement. As such, the number of falsely detected sources within a given flux density bin can be calculated through investigating how many sources would be detected within the negative image (i.e. where the image is multiplied by -1). The same detection parameters of PROFOUND (as described in Section 3.3), 5σ threshold, and beam correction method (as described in Hale et al. 2019a) are used to extract the catalogue of sources in the negative image. As this correction aims to account for the fact that some sources within the measured catalogue may be false, this correction will act to decrease the measured source counts. This is in the opposite direction to the corrections described in Section 4.5.1. The correction that is applied to account for these false detections is given by

$$C_{\text{FDR}}(S_i, S_i + dS_i) = 1 - \frac{N_{\text{neg}}(S_i, S_i + dS_i)}{N_{\text{cat}}(S_i, S_i + dS_i)}, \quad (8)$$

where N_{cat} is the number of sources within the flux density bin $S_i, S_i + dS_i$ and N_{neg} is the number of sources within the same flux density bin that are detected within the negative image.

4.5.3 Corrected source counts

To obtain the corrected source counts, which should be a true estimate of the underlying flux density distribution, the corrections from the completeness simulations and false detections are combined together multiplicatively to the source counts determined from the measured output catalogue described in Section 3.3. This is applied to the source count from the catalogue where artefacts have not been removed. This is because these artefacts may also be apparent in the inverted image for which the false detection rate is determined from. The associated uncertainties from the measured source counts and the corrections are then combined together in quadrature in order to quantify the total uncertainty on these corrected source counts. The corresponding measurements of the source counts and their uncertainties are given in Table 3.

A comparison of the uncorrected and corrected source counts is presented in Fig. 8, for which observations of previous measured source counts are also presented. These previous source count measurements are from the VLA 3 GHz COSMOS Survey (Smolčić et al. 2017), the compilation of 1.4 GHz source counts presented by de Zotti et al. (2010), and finally the S^3 extragalactic simulated skies at 1.4 GHz (Wilman et al. 2008). These are all scaled to

Table 3. The data corresponding to Fig. 8 for measurements below 500 mJy. For each flux density bin, we list the differential source counts in both raw and Euclidean normalized form. The final column lists the source counts following the application of the corrections described in Sections 4.5.1 and 4.5.2.

Bin (mJy)	Bin mid (mJy)	Counts	Raw $\frac{dN}{dS} S^{2.5}$ (sr ⁻¹ Jy ^{1.5})	Corrected $\frac{dN}{dS} S^{2.5}$ (sr ⁻¹ Jy ^{1.5})
0.10–0.13	0.11	636 ± 25	1.45 ± 0.06	3.94 ^{+0.78} _{-0.67}
0.13–0.16	0.14	688 ± 26	2.22 ± 0.08	4.27 ^{+1.09} _{-0.83}
0.16–0.20	0.18	604 ± 24	2.75 ± 0.11	4.85 ^{+0.96} _{-0.85}
0.20–0.25	0.22	450 ± 21	2.89 ± 0.14	4.19 ^{+0.70} _{-0.85}
0.25–0.32	0.28	368 ± 19	3.34 ± 0.17	4.44 ^{+0.94} _{-0.71}
0.32–0.40	0.35	340 ± 18	4.36 ± 0.23	5.49 ^{+1.13} _{-0.83}
0.40–0.50	0.45	240 ± 15	4.35 ± 0.27	5.00 ^{+1.16} _{-0.89}
0.50–0.63	0.56	178 ± 13	4.56 ± 0.33	5.14 ^{+1.58} _{-0.92}
0.63–0.79	0.71	159 ± 12	5.75 ± 0.43	6.13 ^{+1.74} _{-0.95}
0.79–1.00	0.89	118 ± 10	6.03 ± 0.51	6.91 ^{+1.58} _{-1.70}
1.00–1.26	1.12	102 ± 10	7.36 ± 0.72	8.17 ^{+2.18} _{-1.62}
1.26–1.58	1.41	78 ± 8	7.95 ± 0.82	7.75 ^{+2.14} _{-1.45}
1.58–2.00	1.78	67 ± 8	9.65 ± 1.15	9.65 ^{+2.67} _{-1.68}
2.00–2.51	2.24	58 ± 7	11.79 ± 1.42	11.79 ^{+2.98} _{-2.43}
2.51–3.16	2.82	60 ± 7	17.24 ± 2.01	17.24 ^{+6.09} _{-3.20}
3.16–3.98	3.55	44 ± 6	17.85 ± 2.43	17.85 ^{+5.29} _{-3.14}
3.98–5.01	4.47	36 ± 6	20.63 ± 3.44	20.63 ^{+4.86} _{-5.37}
5.01–6.31	5.62	34 ± 5	27.53 ± 4.05	27.53 ^{+10.03} _{-5.36}
6.31–7.94	7.08	34 ± 5	38.88 ± 5.72	38.88 ^{+9.65} _{-8.80}
7.94–10.00	8.91	31 ± 5	50.08 ± 8.08	50.08 ^{+18.54} _{-14.90}
10.00–12.59	11.22	21 ± 4	47.92 ± 9.13	47.92 ^{+19.52} _{-9.13}
12.59–15.85	14.13	13 ± 3	41.90 ± 9.67	41.90 ^{+9.67} _{-9.67}
15.85–19.95	17.78	12 ± 3	54.63 ± 13.66	54.63 ^{+13.66} _{-13.66}
19.95–25.12	22.39	5 ± 2	32.15 ± 12.86	32.15 ^{+12.86} _{-12.86}
25.12–31.62	28.18	5 ± 2	45.42 ± 18.17	45.42 ^{+18.17} _{-18.17}
31.62–39.81	35.48	4 ± 2	51.32 ± 25.66	51.32 ^{+25.66} _{-25.66}
39.81–50.12	44.67	11 ± 3	199.37 ± 54.37	199.37 ^{+54.37} _{-54.37}
50.12–63.10	56.23	6 ± 2	153.61 ± 51.20	153.61 ^{+51.20} _{-51.20}
63.10–79.43	70.79	4 ± 2	144.65 ± 72.33	144.65 ^{+72.33} _{-72.33}
100.00–125.89	112.20	1 ± 1	72.15 ± 72.15	72.15 ^{+72.15} _{-72.15}
125.89–158.49	141.25	1 ± 1	101.92 ± 101.92	101.92 ^{+101.92} _{-101.92}
158.49–199.53	177.83	1 ± 1	143.97 ± 143.97	143.97 ^{+143.97} _{-143.97}
251.19–316.23	281.84	2 ± 1	574.51 ± 287.25	574.51 ^{+287.25} _{-287.25}
316.23–398.11	354.81	1 ± 1	405.76 ± 405.76	405.76 ^{+405.76} _{-405.76}
398.11–501.19	446.68	1 ± 1	573.15 ± 573.15	573.15 ^{+573.15} _{-573.15}

1.4 GHz assuming a spectral index of -0.7 . The source counts are plotted for those flux density bins that have a minimum value greater than the 5σ limit (where σ is taken as 16 μ Jy). As can be seen from Table 3, the corrections to the source counts become important at flux densities of $S \lesssim 0.7$ mJy. At these lower flux densities, the corrections applied appear to successfully correct the measured source counts plotted in Fig. 8, in between those of previous observations from Smolčić et al. (2017) and Mauch et al. (2020), and the simulations of Wilman et al. (2008). The observations reach the regime where the flattening or upturn in the measured source counts is seen, thought to represent the emergence of the SFG population seen in the radio via their optically thin synchrotron emission (e.g. Condon et al. 2012). At higher flux densities, the measured source counts are also comparable with

previous work, although we note the dip in the counts at around 30 mJy. Perturbations to the source count measurements due to field-to-field variations (sample variance) are expected to be negligible for the faint end of a survey of this area and depth (Heywood, Jarvis & Condon 2013b). However, as readily be seen from Fig. 8, similar effects can skew the counts at the bright end and this is likely the simplest explanation for the 30 mJy dip.

5 CONCLUSION

We have described the production and validation of the reduced data products associated with a VLA survey covering ~ 5 deg² of the XMM-LSS/VIDEO field. The data we present enhance the multiwavelength view of one of the best-studied extragalactic deep

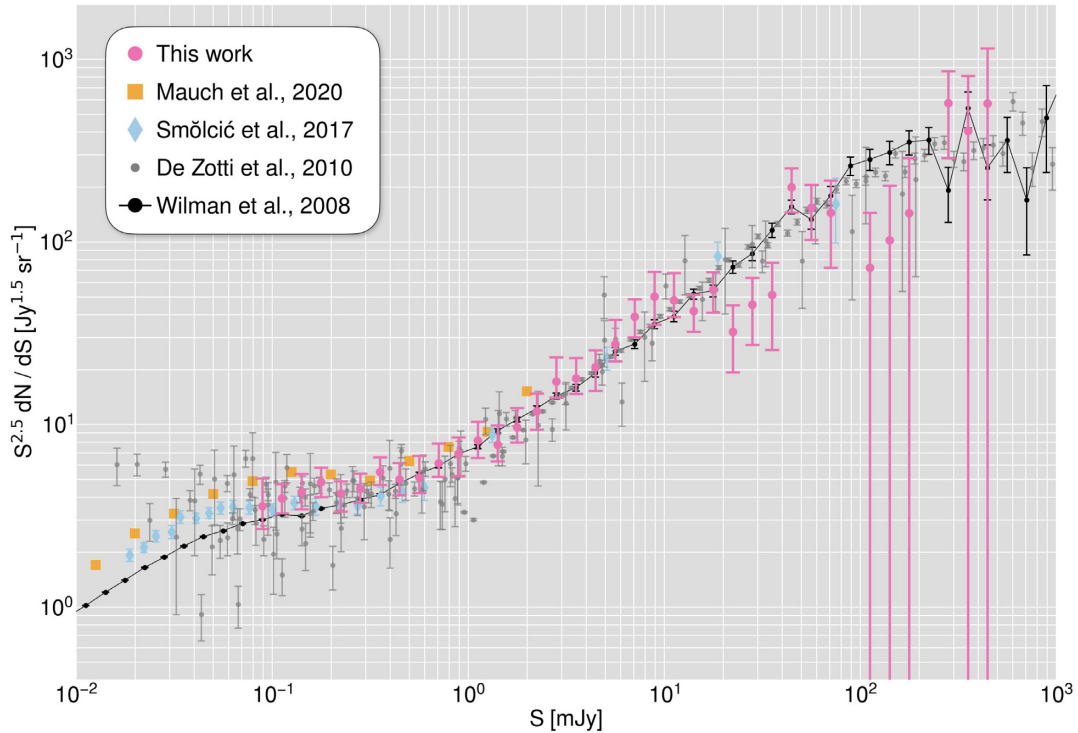


Figure 8. Euclidean normalized differential source counts and their associated uncertainties for these observations are shown above via the pink markers circles. Also shown are the comparisons to previous work from simulations at 1.4 GHz of Wilman et al. (2008) (black markers) and also the compilation of observations from de Zotti et al. (2010) (grey markers), the VLA 3 GHz COSMOS Survey from Smolčić et al. (2017) (blue markers), and the 1.28 GHz MeerKAT observations from Mauch et al. (2020). These are all scaled to 1.4 GHz assuming a spectral index of -0.7 where necessary.

fields, and we make these products publicly available for use by the community, downloadable from <http://tiny.cc/vla-xmm>, or by emailing the contact author.

Direction-dependent calibration has been used to produce a broad-band radio mosaic that reaches a thermal noise-limited median depth of $16 \mu\text{Jy beam}^{-1}$ with an angular resolution of 4.5 arcsec. Our survey improves on the existing matched-frequency radio data, expanding the area by a factor of 2.5 to encompass the entire region for which the deep near-infrared VIDEO data (Jarvis et al. 2013) are available, and further increase the depth of the radio data available over this region at these frequencies by 40 per cent.

A source catalogue with 5762 entries has been produced using the PROFOUND source finder, recently demonstrated to have excellent performance for the characterization of extended radio sources by Hale et al. (2019a). The photometric and astrometric performance of the resulting catalogue (and thus the radio mosaic from which it is derived) have been validated by comparison to existing narrow-band observations. The bias-corrected differential source counts are also in excellent agreement with simulations and observations. The 66 per cent fractional bandwidth of the VLA allows in-band spectral indices to be estimated for sources detected at sufficiently high SNRs, and the catalogue contains spectral index measurements for 60 per cent of sources. The mean spectral index as a function of integrated flux density resembles the canonical synchrotron values at the bright end, tending towards flatter spectrum sources below about 1 mJy.

Looking forward, a second data release will be forthcoming with observations from the compact C and D configurations of the VLA being added in order to improve the sensitivity to the many diffuse structures that are evident in the mosaic. Observations using new

mid-frequency SKA precursor instruments will also target this field, with the MIGHTEE survey (Jarvis et al. 2016) specifically planning deep observations of XMM-LSS to greater depths at comparable frequencies. The superior angular resolution of our VLA data will prove useful not only for validation of the MIGHTEE data, but also potentially for disentangling confused sources for the optical cross-identification at $100 \mu\text{Jy beam}^{-1}$ and above.

ACKNOWLEDGEMENTS

We thank the anonymous referee and the MNRAS editorial staff for their comments. The National Radio Astronomy Observatory is a facility of the National Science Foundation operated under cooperative agreement by Associated Universities, Inc. We thank the VLA Director for awarding us 1.5 h of Director’s Discretionary Time in order to complete this project. This work was supported by resources provided by the Pawsey Supercomputing Centre with funding from the Australian Government and the Government of Western Australia. IH thanks the Rhodes Centre for Radio Astronomy Techniques and Technologies (RATT), South Africa, for the provision of computing facilities. This research has made use of NASA’s Astrophysics Data System. This research made use of MONTAGE. It is funded by the National Science Foundation under Grant Number ACI-1440620, and was previously funded by the National Aeronautics and Space Administration’s Earth Science Technology Office, Computation Technologies Project, under Cooperative Agreement Number NCC5-626 between NASA and the California Institute of Technology. This research made use of APLPY, an open-source plotting package for PYTHON (Robitaille & Bressert 2012). This work was supported by the Oxford Hintze Centre for Astrophysical Surveys which is funded through generous support

from the Hintze Family Charitable Foundation. CLH acknowledges the Science and Technology Facilities Council (STFC) for their support through an STFC Studentship.

DATA AVAILABILITY

The full version of Table 1 is available as online supplementary material. Image products in FITS format are available from <http://tiny.cc/vla-xmm>, or by request from the contact author.

REFERENCES

- Aihara H. et al., 2018, *PASJ*, 70, S4
 Becker R. H., White R. L., Helfand D. J., 1995, *ApJ*, 450, 559
 Blyth S. et al., 2016, Proc. Sci., LADUMA: Looking at the Distant Universe with the MeerKAT Array. SISSA, Trieste, PoS#4
 Bondi M. et al., 2003, *A&A*, 403, 857
 Bondi M. et al., 2007, *A&A*, 463, 519
 Briggs D. S., 1995, American Astronomical Society Meeting Abstracts. p. 112.02
 Chen C. T. J. et al., 2018, *MNRAS*, 478, 2132
 Condon J. J., 1992, *ARA&A*, 30, 575
 Condon J. J., 1997, *PASP*, 109, 166
 Condon J. J. et al., 2012, *ApJ*, 758, 23
 Daddi E. et al., 2007, *ApJ*, 670, 156
 Dark Energy Survey Collaboration, 2016, *MNRAS*, 460, 1270
 Davies L. J. M. et al., 2018, *MNRAS*, 480, 768
 de Zotti G., Massardi M., Negrello M., Wall J., 2010, *A&AR*, 18, 1
 Fernández X. et al., 2013, *ApJ*, 770, L29
 Franzen T. M. O. et al., 2015, *MNRAS*, 453, 4020
 Gwyn S. D. J., 2012, *AJ*, 143, 38
 Hale C. L., Robotham A. S. G., Davies L. J. M., Jarvis M. J., Driver S. P., Heywood I., 2019a, *MNRAS*, 487, 3971
 Hale C. L. et al., 2019b, *A&A*, 622, A4
 Heywood I., Bielby R. M., Hill M. D., Metcalfe N., Rawlings S., Shanks T., Smirnov O. M., 2013a, *MNRAS*, 428, 935
 Heywood I., Jarvis M. J., Condon J. J., 2013b, *MNRAS*, 432, 2625
 Heywood I. et al., 2016, *MNRAS*, 460, 4433
 Humphreys B., Cornwell T. J., 2011, SKA Memo 132, Available at: <https://www.skatelescope.org/uploaded/59116.132.Memo.Humphreys.pdf>
 Huynh M. T., Jackson C. A., Norris R. P., Prandoni I., 2005, *AJ*, 130, 1373
 Huynh M. T., Bell M. E., Hopkins A. M., Norris R. P., Seymour N., 2015, *MNRAS*, 454, 952
 Ibar E., Ivison R. J., Biggs A. D., Lal D. V., Best P. N., Green D. A., 2009, *MNRAS*, 397, 281
 Jarvis M. J., Rawlings S., 2004, *New Astron. Rev.*, 48, 1173
 Jarvis M. J. et al., 2013, *MNRAS*, 428, 1281
 Jarvis M. et al., 2015, Proc. Sci., The Star-Formation History of the Universe with the SKA. SISSA, Trieste, PoS#68
 Jarvis M. et al., 2016, Proc. Sci., The MeerKAT International GHz Tiered Extragalactic Exploration (MIGHTEE) Survey. SISSA, Trieste, PoS#6
 Johnston R., Vaccari M., Jarvis M., Smith M., Giovannoli E., Häußler B., Prescott M., 2015, *MNRAS*, 453, 2540
 Le Fèvre O. et al., 2013, *A&A*, 559, A14
 Le Fèvre O. et al., 2015, *A&A*, 576, A79
 Lonsdale C. J. et al., 2003, *PASP*, 115, 897
 Maddox N., Jarvis M. J., Oosterloo T. A., 2016, *MNRAS*, 460, 3419
 Mauch T. et al., 2020, *ApJ*, 888, 61
 Mauduit J. C. et al., 2012, *PASP*, 124, 714
 Middelberg E. et al., 2008, *AJ*, 135, 1276
 Miller N. A. et al., 2013, *ApJS*, 205, 13
 Mohan N., Rafferty D., 2015, Astrophysics Source Code Library, record ascl:1502.007
 Noeske K. G. et al., 2007, *ApJ*, 660, L43
 Noordam J. E., 2004, in Oschmann Jacobus M. J., ed., Proc. SPIE Conf. Ser. Vol. 5489, Ground-based Telescopes. SPIE, Bellingham, p. 817
 Noordam J. E., Smirnov O. M., 2010, *A&A*, 524, A61
 Norris R. P. et al., 2011, *Publ. Astron. Soc. Aust.*, 28, 215
 Offringa A. R. et al., 2014, *MNRAS*, 444, 606
 Oliver S. J. et al., 2012, *MNRAS*, 424, 1614
 Perley R. A., Butler B. J., 2013, *ApJS*, 204, 19
 Prandoni I., Seymour N., 2015, Proc. Sci., Revealing the Physics and Evolution of Galaxies and Galaxy Clusters with SKA Continuum Surveys. SISSA, Trieste, PoS#67
 Prandoni I., Parma P., Wieringa M. H., de Ruiter H. R., Gregorini L., Mignano A., Vettolani G., Ekers R. D., 2006, *A&A*, 457, 517
 Prandoni I., Guglielmino G., Morganti R., Vaccari M., Maini A., Röttgering H. J. A., Jarvis M. J., Garrett M. A., 2018, *MNRAS*, 481, 4548
 Robitaille T., Bressert E., 2012, Astrophysics Source Code Library, record ascl:1208.017
 Robotham A. S. G., Davies L. J. M., Driver S. P., Koushan S., Taranu D. S., Casura S., Liske J., 2018, *MNRAS*, 476, 3137
 Salvini S., Wijnholds S. J., 2014, *A&A*, 571, A97
 Schinnerer E. et al., 2007, *ApJS*, 172, 46
 Scodreggio M. et al., 2018, *A&A*, 609, A84
 Simpson C. et al., 2006, *MNRAS*, 372, 741
 Smirnov O. M., 2011a, *A&A*, 527, A107
 Smirnov O. M., 2011b, *A&A*, 527, A108
 Smolčić V. et al., 2017, *A&A*, 602, A1
 Smolčić V. et al., 2018, *A&A*, 620, A14
 Whitaker K. E., van Dokkum P. G., Brammer G., Franx M., 2012, *ApJ*, 754, L29
 White R. L., Helfand D. J., Becker R. H., Glikman E., de Vries W., 2007, *ApJ*, 654, 99
 White S. V., Jarvis M. J., Häußler B., Maddox N., 2015, *MNRAS*, 448, 2665
 Wilman R. J. et al., 2008, *MNRAS*, 388, 1335
 Wilman R. J., Jarvis M. J., Mauch T., Rawlings S., Hickey S., 2010, *MNRAS*, 405, 447

SUPPORTING INFORMATION

Supplementary data are available at *MNRAS* online.

Table 1. Radio source catalogue.

Please note: Oxford University Press is not responsible for the content or functionality of any supporting materials supplied by the authors. Any queries (other than missing material) should be directed to the corresponding author for the article.

This paper has been typeset from a $\text{\TeX}/\text{\LaTeX}$ file prepared by the author.