

Pixel level decorrelation in service of the *Spitzer* microlens parallax survey

Lisa Dang^{1,2,★}, S. Calchi Novati,² S. Carey² and N. B. Cowan^{1,3}

¹Department of Physics, McGill University, 3600 University St, Montréal, QC H3A 2T8, Canada

²IPAC, Mail Code 100-22, Caltech, 1200 E. California Blvd., Pasadena, CA 91125, USA

³Department of Earth and Planetary Science, McGill University, 3450 University St, Montréal, QC H3A 2A7, Canada

Accepted 2020 July 22. Received 2020 July 20; in original form 2020 March 3

ABSTRACT

Microlens parallax measurements combining space-based and ground-based observatories can be used to study planetary demographics. In recent years, the *Spitzer Space Telescope* was used as a microlens parallax satellite. Meanwhile, *Spitzer* IRAC has been employed to study short-period exoplanets and their atmospheres. As these investigations require exquisite photometry, they motivated the development of numerous self-calibration techniques now widely used in the exoplanet atmosphere community. Specifically, pixel level decorrelation (PLD) was developed for staring-mode observations in uncrowded fields. We adapt and extend PLD to make it suitable for observations obtained as part of the *Spitzer* Microlens Parallax Campaign. We apply our method to two previously published microlensing events, OGLE-2017-BLG-1140 and OGLE-2015-BLG-0448, and compare its performance to the state-of-the-art pipeline used to analyse *Spitzer* microlensing observation. We find that our method yields photometry 1.5–6 times as precise as previously published. In addition to being useful for *Spitzer*, a similar approach could improve microlensing photometry with the forthcoming *Nancy Grace Roman Space Telescope*.

Key words: gravitational lensing; micro – techniques; photometric – infrared; planetary systems.

1 INTRODUCTION

Gravitational microlensing is a powerful tool to discover planets through the gravitational effect they have on light from more distant sources. Unlike other planet detection methods, gravitational lensing does not rely on the detection of photons from the planet or its host star. Therefore, this method allows us to find planets well beyond the Solar neighbourhood. Moreover, in contrast with the other detection methods, gravitational microlensing is best suited to detecting planets beyond their stars' snowline (for a review, see Gaudi 2012; Tsapras 2018).

In most microlensing events, the primary observable is the Einstein time-scale:

$$t_E = \frac{\theta_E}{\mu_{\text{rel}}}, \quad (1)$$

where μ_{rel} is the lens–source relative proper motion and θ_E is the angular Einstein radius, defined as

$$\theta_E = \sqrt{\kappa M_L \pi_{\text{rel}}}, \quad (2)$$

where M_L is the mass of the lens, π_{rel} is the source–lens relative parallax and κ is a constant. The latter quantities are defined as

$$\pi_{\text{rel}} = \left(\frac{D_L - D_S}{D_L D_S} \right) \text{au} \quad (3)$$

and

$$\kappa = \frac{4G}{c^2 \text{au}} \simeq 8.14 \frac{\text{mas}}{M_\odot}, \quad (4)$$

where D_S and D_L are the distance to the source and the lens, respectively (Yee et al. 2015a).

Hence, the lens's mass and distance, M_L and D_L , and the relative motion between the source and the lens, μ_{rel} , are encoded in the primary observable, t_E , and are difficult to disentangle. In most planetary microlensing light curves, it is possible to determine θ_E via the finite source effect (Yoo et al. 2004). Assuming the distance to the source is known, e.g. for observations towards the Bulge, most sources are Bulge stars, the only degeneracy remaining is between the mass of the lens and the distance to the lens.

One way of breaking this degeneracy is by measuring a quantity known as the microlens parallax vector, π_E , defined as

$$\pi_E = \frac{\pi_{\text{rel}} \mu_{\text{rel}}}{\theta_E \mu_{\text{rel}}}. \quad (5)$$

One can measure the microlens parallax by simultaneously observing an event from two well-separated observatories. The two observatories will see a different alignment between the lens and the source, so the projected separation and time of closest alignment will be different. This requires that the two observatories are far enough from each other, $\mathcal{O}(1 \text{ au})$, for the light curves to be significantly different (Refsdal & Rosseland 1966; Gould 1994).

At $>1 \text{ au}$ away from Earth for the past 6 yr, the *Spitzer Space Telescope* (Werner et al. 2004) was ideal for measuring microlens parallax (PI: A. Gould; PID 10036, 11006, 12013, 12015, 13005, 14012, PI: S. Dong; PID: 13250, PI: S. Carey; PID 14121). Following the successful 2014 pilot program, *Spitzer* took on a new role as a 'microlens parallax satellite' with the primary objective of measuring the Galactic distribution of exoplanets towards the bulge (Calchi Novati et al. 2015a,b, 2018, 2019; Shvartzvald et al. 2015, 2016, 2017, 2019; Udalski et al. 2015b, 2018; Yee et al. 2015a,b; Zhu et al.

* E-mail: lisa.dang@physics.mcgill.ca

2015a,b, 2016, 2017b,c; Bozza et al. 2016; Han et al. 2016, 2017, 2018; Poleski et al. 2016; Street et al. 2016; Chung et al. 2017, 2019; Shin et al. 2017, 2018; Albrow et al. 2018; Ryu et al. 2018; Wang et al. 2018; Jung et al. 2019; Li et al. 2019; Shan et al. 2019; Zang et al. 2019, 2020; Gould et al. 2020; Hirao et al. 2020).

1.1 Decorrelation techniques developed for *Spitzer* observations

We need accurate lens properties, so it is crucial to obtain excellent photometry. However, extracting high precision photometry from *Spitzer* observations can be challenging. The channel 1 (3.6 μm) of the IRAC instrument (Fazio et al. 2004) was used for the *Spitzer* Microlensing Campaign. With a mean pixel scale of $1.221 \text{ arcsec pixel}^{-1}$ and a point spread function (PSF) with a mean full width at half-maximum (FWHM) of 1.66 arcsec, the images are moderately undersampled. The systematics are primarily due to the convolution of changes in the telescope pointing and the significant variation of the sensitivity across each pixel. Inconveniently, the instrumental systematics can masquerade as the signature of planetary companions (e.g. Poleski et al. 2016).

Many techniques for decorrelating structured noise from astrophysical signals in IRAC data have been developed over the past decade. Ingalls et al. (2016) tested the effectiveness of widely used decorrelation methods. They reported that pixel level decorrelation (PLD; Deming et al. 2015), BiLinearly Interpolated Subpixel Sensitivity mapping (Stevenson et al. 2012) and Independent Component Analysis (Morello et al. 2014; Morello 2015) perform best to recover the underlying astrophysical signal.

The *Spitzer* microlensing team currently uses a PRF method¹ that uses information about the PSF, the detector sampling and the intrapixel sensitivity variation (Calchi Novati et al. 2015b). The method is tailored to work on time series data and, additionally, allows multiple sources to be fitted simultaneously. The current photometric extraction pipeline works for most targets, but there are cases showing possible residual red noise, e.g. OGLE-2016-BLG-1195Lb (Shvartzvald et al. 2017) and KMT-2018-BLG-0029 (Gould et al. 2020). In particular, the single lens model fitted to the *Spitzer* observations of OGLE-2015-BLG-0448 resulted in residuals with significant trends as seen in fig. 2 of Poleski et al. (2016) and reproduced in the bottom-right panel of our Fig. 5. Poleski et al. (2016) acknowledged that the residuals could be due either to a planetary companion or instrumental systematics.

Photometry extraction procedures designed for planetary transit observations have been adapted for a microlensing survey with *K2* campaign 9 (*K2C9*, Henderson et al. 2016). Zhu et al. (2017a) presented a photometry extraction method based on the protocol developed by Huang et al. (2015) for less crowded fields. In this method, the instrumental systematics are decorrelated against the spacecraft's pointing and are fitted simultaneously with the astrophysical microlensing model.

Poleski et al. (2019) introduced an open-source alternative *K2* photometry extraction method build upon Wang et al.'s (2016) Causal Pixel Model, a data-driven instrumental model that was also developed for obtaining photometry for planetary occultations in less crowded fields. This modified Causal Pixel Model differs in the use of the PRF to account for contamination from nearby sources.

¹The concept of effective point spread function for the reduction of under-sampled data was first discussed in Anderson & King (2000) for the analysis of *Hubble Space Telescope* data.

Photometry extraction for *Spitzer* is not as challenging as for *K2*, as it benefits from more precise telescope pointing and smaller pixel scale, so there has been no attempt to use a photometry extraction method other than the pipeline described in Calchi Novati et al. (2015b). However, Koshimoto & Bennett (2019) claimed that the distribution of t_E and π_E for the sample of 50 single lens events from the 2015 *Spitzer* campaign cannot be reproduced by Galactic models. The authors suggested that investigating instrumental noise in the *Spitzer* photometry itself may resolve the discrepancy. Shan et al. (2019) also carried out Galactic model tests and found the model predictions to be consistent with the *Spitzer* parallaxes, but Koshimoto & Bennett (2019) claim this smaller sample of 13 published events suffers from publication bias. Better detector decorrelation methods could help resolve this tension.

In a similar vein to the work of Zhu et al. (2017a) and Poleski et al. (2019), we extend PLD (Deming et al. 2015), developed for *Spitzer* secondary eclipse observations, to microlensing campaigns. In Section 2, we discuss the differences between a typical observing sequence for short-period planets and for a microlensing event. In Section 3, we describe our decorrelation method. We apply our method on a few sample data sets in Section 4. We summarize and conclude in Section 5.

2 OBSERVATIONS

2.1 Challenges with *Spitzer* microlensing campaign

Before we attempt to apply PLD to the *Spitzer* microlensing survey, it is important to understand the differences between typical observations of transiting planets and of a microlensing event.

2.2 Time-scale

Both science cases require time series photometry of a point source. However, the observing schemes are not quite the same. The duration of transiting planet observations is between a few hours for a transit or secondary eclipse to a couple days for full-orbit phase curves. Given the short length of the observations, time series observations of transiting exoplanets are generally collected in staring-mode. On the other hand, a typical microlensing event lasts for weeks which is not ideal for staring-mode observations over the full length of the event.

Moreover, a microlensing campaign only lasts for 40 consecutive days – the days during which the galactic bulge is visible from *Spitzer*. As the science objective of the *Spitzer* microlensing campaign is to constrain exoplanet demographics, it is crucial to maximize the number of targets during this visibility window and to get a large temporal coverage of the microlensing event. For this reason, *Spitzer* will only point at each target *four times per day at most*. In contrast, transiting planets are observed at a very high cadence (e.g. an image every second).

2.3 Pointing

Additionally, unlike transiting planet observations, microlensing observations are dithered on six or more slightly different positions in order to minimize the contribution from bad pixels and cosmic rays and to avoid background saturation (see Fig. 1). Moreover, dithering the position of the PSF on different part of the detector allows for a better characterization of the shape of the PSF. Consequently, the pointing of the telescope for a microlensing campaign is not as precise as staring-mode observations. During a staring-mode observation,

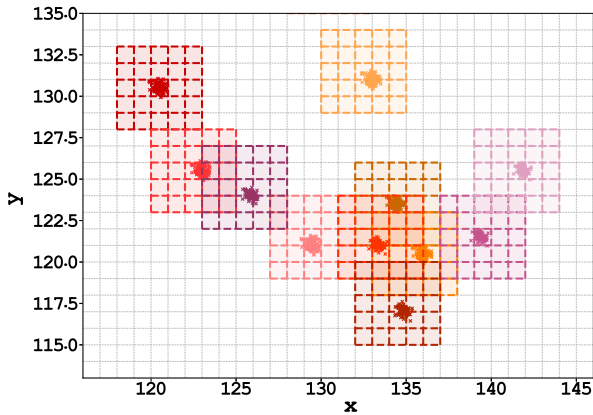


Figure 1. Visualization of the position of the PSF centroids and the 12 different dither positions on the detector for *Spitzer* observations of OGLE-2015-BLG-0448. The dots represent the centroid for each observation and the different colours indicate a different dither position. The 5×5 grid around the centroids at each dither position represent the pixels used to extract the target’s photometry using PLD.

the target is positioned on the ‘sweet-spot’ (peak response) and the centroid of the target’s PSF varies by 1/10th of a pixel. On the other hand, for dithered observations towards the Galactic bulge, the centroid of the source for each dither position changes by almost a pixel along the 40-d season.

2.4 Field rotation

Another consequence of the long duration of microlensing events is that the orientation of the camera changes during the course of the observations. Hence, the target’s PSF and that of nearby sources rotate on the detector, and this may affect the *Spitzer* photometry as discussed for the observations of KMT-2018-BLG-0029 (Gould et al. 2020). During the 40-d microlensing season, the rotation of the field of view is about 1 deg. For staring-mode observations, on the other hand, the field rotation is negligible.

2.5 Relative brightness

Unlike transiting systems usually observed by *Spitzer*, microlensing events are often detected in crowded fields, e.g. towards the bulge of the galaxy. In general, transiting short-period planets observed with *Spitzer* are isolated bright targets, hence, the exposure time is approximately a second to avoid saturation. Microlensing targets are fainter and the exposure time is 30 s.

2.6 Magnitude of the signal

In general, the amplitude of transits, secondary eclipses, and phase variations are a percent or less of the stellar flux. The magnification of microlensing events depends on the source–lens projected separation but is typically up to a few magnitudes.

2.7 Signal coverage

Most transiting planets observed with *Spitzer* have well-known ephemerides. Hence, it is possible to carefully plan the observations to cover the entire duration of the occultation. In contrast, microlensing events are unforeseeable and are first detected from ground-based surveys. These alerts then go through the selection process described

P_1	P_2	P_3	P_4	P_5
P_6	P_7	P_8	P_9	P_{10}
P_{11}	P_{12}	P_{13}	P_{14}	P_{15}
P_{16}	P_{17}	P_{18}	P_{19}	P_{20}
P_{21}	P_{22}	P_{23}	P_{24}	P_{25}

Figure 2. Pixel labelling.

by Yee et al. (2015b). The ones that pass the selection process are then scheduled for *Spitzer* follow-up observation. Given the unpredictable nature of microlensing events and the short visibility window of the galactic bulge, some *Spitzer* microlensing targets observations do not cover the baseline and/or the peak magnification of the event.

3 METHOD DESCRIPTION

PLD differs fundamentally from all other methods used to analyse *Spitzer* data. Other decorrelation methods rely on defining an instrumental noise model that depends on the position and shape of the PRF. In contrast, PLD decorrelates against the intensities of the individual pixels. Unlike the current photometric pipeline used for the *Spitzer* microlensing campaign, the instrumental effects are evaluated simultaneously with the microlensing model fit.

3.1 Photometry extraction

For the photometric extraction, we identify the position of the target’s PRF on each *Spitzer*/IRAC image using the same procedure as Calchi Novati et al. (2015b). For each dither position, we identify the central pixel (see Fig. 1), i.e. the pixel where the centroid of the target is most often located. Note that the centroid of the target varies by at most a pixel between epochs and the centroid of the target is sometimes located on one of the neighbouring pixels. We use a 5×5 pixel square aperture to obtain an initial photometric measurement for each frame. To estimate the fractional flux recorded by each pixel, we divide by the sum of intensities in the 5×5 stamp. For consistency and better pixel characterization, we do not recentre the stamp on the centroid of the target for each frame, rather, we keep the stamp location fixed for each dither position (see Fig. 1).

The raw photometry at a given time, F^t , is the sum of the intensities measured by pixels within the square aperture. To characterize and remove the systematics, we define the raw photometry as a multiplication of the astrophysical signal $F_{\mu\text{lens}}(t_i)$ and the instrumental noise $D(P_1^{t_i}, \dots, P_{25}^{t_i})$

$$F^t = \sum_{j=1}^{25} P_j^t = F_{\mu\text{lens}}(t_i) \times D(P_1^{t_i}, \dots, P_{25}^{t_i}), \quad (6)$$

where the superscript t denotes the epoch of the observations and the subscript i indicates the dither position, and j denotes the pixel ID (see Fig. 2).

3.2 Detrending

In PLD, the detector model for each dither position is defined as some arbitrary function of the fractional flux measured by each pixel, P_j .

To first order, we can approximate the detector model as linear:

$$D(P_1^{t_i}, \dots, P_{25}^{t_i}) = \sum_{j=1}^{25} c_j \frac{P_j^{t_i}}{\sum_n P_n^{t_i}} = \sum_{j=1}^{25} c_j \hat{p}_j^{t_i}, \quad (7)$$

where c_j is the PLD coefficient corresponding to the j th pixel and $\hat{p}_j^{t_i}$ is the fractional flux measured by the j th pixel at a given time, t_i . As the instrumental systematics is not expected to behave the same way at different location on the detector, we allow each dither position, i , its own independent PLD coefficients.

In principle, as PLD uses pixel fractional fluxes as regressors, the detector model does not need to know what causes variations in pixel fractional fluxes to model them. In particular, any effect that leads to changes in pixel fractional fluxes such as the translation and rotation of the field would be modelled by PLD.

3.3 Astrophysical model

We can fit a point-source-point-lens model (1L1S) and a binary-lens model (2L1S) to the *Spitzer* data. The single-lens magnification $A(t)$ is modelled with a standard Paczynski (1986) model with the time of closest alignment between the lens and the source, t_0 , the impact parameter, u_0 , and the Einstein ring crossing time, t_E , as fitting parameters. The magnification for a 2L1S is evaluated using the VBBINARYLENSING algorithm (Bozza 2010; Bozza et al. 2018) described by four additional parameters: the planet–host projected separation in units of θ_E , s , the planet–host mass ratio, q , the angular radius of the source in units of θ_E , ρ , and the angle between the planet–host axis and the trajectory of the source, α . The astrophysical signal as seen from the observer, $F_{\mu\text{lens}}(t_i)$, is also dependent on the baseline flux F_b and the source’s flux F_s

$$F_{\mu\text{lens}}(t_i) = F_b + F_s \cdot A(t_i). \quad (8)$$

If *Spitzer* observations include the baseline and the peak of the microlensing event, then we can estimate the microlensing parameters solely using *Spitzer* observations. Otherwise, we also use published ground-based observations from surveys such as the Optical Gravitational Lensing Experiment (OGLE; Udalski, Szymański & Szymański 2015a) to further constrain the astrophysical parameters. In this scenario, we use the MULENSMODEL package to evaluate the microlensing light curves (Poleski & Yee 2019).

Simultaneous ground-based and space-based observations allow us to constrain the microlens parallax vector components, $\pi_E = (\pi_{E,N}, \pi_{E,E})$. We use the location coordinates of the ground-based telescope and *Spitzer* for the duration of the observations to obtain the magnifications as seen from each observatory, $A_g(t_i)$ and $A_s(t_i)$. Hence, the astrophysical signal for the ground-based telescope and space-based satellite, $F_{\mu\text{lens},g}(t_i)$ and $F_{\mu\text{lens},s}(t_i)$ are modelled as

$$\begin{aligned} F_{\mu\text{lens},g}(t_i) &= F_{b,g} + F_{s,g} \cdot A_g(t_i), \\ F_{\mu\text{lens},s}(t_i) &= F_{b,s} + F_{s,s} \cdot A_s(t_i), \end{aligned} \quad (9)$$

where $F_{b,g}$ and $F_{b,s}$ are the baseline flux for the ground-based and space-based light curves, respectively, and $F_{s,g}$ and $F_{s,s}$ are the source flux as seen from the ground-based and space-based observatory, respectively.

3.4 Regressors

As mentioned above, we first obtained a raw time series photometry for each dither position, i , Y_i with N_{dat_i} data using aperture photometry. We initially fit a 1L1S or 2L1S model to the raw light curve

to obtain initial estimates for the astrophysical parameters. Since PLD uses the fractional flux from each pixel as regressors, the total number of regressors is $N_{\text{reg,total}} = 25 \times N_{\text{dither}}$, where N_{dither} is the number of dither position for a given set of observations. In order to apply PLD on dithered observations, we evaluated the detector model parameters separately for each dither position but kept the astrophysical model the same for all dithered position.

We use the fractional flux of a 5×5 stamp, hence there are $N_{\text{reg}} = 25$ regressors per dither position. For each dither position i , we can now express equation (6) in vector form as

$$Y_i = \mathbf{A}_i \mathbf{X}_i, \quad (10)$$

where \mathbf{A}_i is the $N_{\text{dat}_i} \times N_{\text{reg}}$ design matrix constructed with the set regressors $\hat{p}_j^{t_i}$ from equation (7) multiplied by the astrophysical model $F_{\mu\text{lens}}(t_i)$ from equation (8). Hence, the elements of \mathbf{A}_i are defined as $a_{i,j} = F_{\mu\text{lens}}(t_i) \hat{p}_j^{t_i}$. \mathbf{X}_i is the $N_{\text{reg}} \times 1$ vector containing the PLD coefficients.

In other words, we construct the following matrices:

$$\begin{aligned} Y_i &= \begin{bmatrix} y_1 \\ y_2 \\ \vdots \\ y_{N_{\text{dat}_i}} \end{bmatrix} \\ \mathbf{A}_i &= \begin{bmatrix} a_{1,1} & a_{1,2} & \cdots & a_{1,N_{\text{reg}}} \\ a_{2,1} & a_{2,2} & \cdots & a_{2,N_{\text{reg}}} \\ \vdots & \vdots & \ddots & \vdots \\ a_{N_{\text{dat}_i},1} & a_{N_{\text{dat}_i},2} & \cdots & a_{N_{\text{dat}_i},N_{\text{reg}}} \end{bmatrix} \\ \mathbf{X}_i &= \begin{bmatrix} c_1 \\ c_2 \\ \vdots \\ c_{N_{\text{reg}}} \end{bmatrix}. \end{aligned} \quad (11)$$

For a given astrophysical model, $F_{\mu\text{lens}}(t_i)$, equation (10) is linear. Hence, we can evaluate the PLD coefficients analytically by solving the generalized least-squares problem for each trial astrophysical model

$$\mathbf{X}_i = [\mathbf{A}_i^T \mathbf{C}_i^{-1} \mathbf{A}_i]^{-1} [\mathbf{A}_i^T \mathbf{C}_i^{-1} \mathbf{Y}_i], \quad (12)$$

where \mathbf{C}_i is the $N_{\text{dat}_i} \times N_{\text{dat}_i}$ covariance matrix of the data

$$\mathbf{C}_i = \begin{bmatrix} \sigma_{y_1}^2 & 0 & \cdots & 0 \\ 0 & \sigma_{y_2}^2 & \cdots & 0 \\ \vdots & \vdots & \ddots & \vdots \\ 0 & 0 & \cdots & \sigma_{y_{N_{\text{dat}_i}}}^2 \end{bmatrix}. \quad (13)$$

3.5 Fitting process

To fit the light curves, we develop two fitting strategies. The first is to fit only the *Spitzer* data and the second is to simultaneously fit ground-based and space-based observations when the *Spitzer* data alone are insufficient to constrain the microlensing parameters. In either case, we use a Markov chain Monte Carlo (MCMC) to estimate the fit parameters and their uncertainties.

3.5.1 *Spitzer* observations solely

To demonstrate our new detrending approach, we re-analysed published *Spitzer* microlensing data (Poleski et al. 2016; Calchi Novati et al. 2018). We first fit the astrophysical model to the raw photometry with a Levenberg–Marquardt (L–M) algorithm,

using parameter values close to those from the literature as initial values.

The estimates obtained from the initial minimization are then used as initial guesses for our MCMC. We use EMCEE (Foreman-Mackey et al. 2013) to estimate the parameters that maximize the log-likelihood, $\ln L$:

$$\ln L = -\frac{\chi_{\text{Spit}}^2}{2} - \sum_{i=1}^{N_{\text{dat}}} \ln \sigma_{y_i} - \frac{N_{\text{dat}}}{2} \ln 2\pi + \ln L_{\text{reg}}, \quad (14)$$

where χ_{Spit}^2 is the usual badness of fit,

$$\chi_{\text{Spit}}^2 = \sum_{i=1}^{N_{\text{dat}}} \frac{[F(t_i) - F_{\mu\text{lens}}(t_i) \times D(P_1^{t_i}, \dots)]^2}{\sigma_{y_i}^2}, \quad (15)$$

and $\ln L_{\text{reg}}$ is an added term to constrain the flexibility of PLD and is defined as

$$\ln L_{\text{reg}} = -\sum_{i=1}^{N_{\text{dat}}} \frac{[F(t_i) - F_{\mu\text{lens}}(t_i)]^2}{2\sigma_{\text{raw}}^2} - N_{\text{dat}} \ln \sigma_{\text{raw}} - \frac{N_{\text{dat}}}{2} \ln 2\pi, \quad (16)$$

where σ_{raw} is an estimate of the photometric scatter of the raw data. Without this term, our detector model tends to overfit the data and absorb the astrophysical flux variation. Since we are confident that the slow and large flux variation is due to microlensing magnification of the primary lens, we use the difference between the astrophysical model and raw light curve to regulate our MCMC.

We first fit the astrophysical model to the raw photometry with an L–M and use this fit as the initial guess for our MCMC. We initialize 300 MCMC walkers widely distributed around this guess. Note that only the astrophysical parameters are jump parameters: the PLD coefficients are evaluated analytically at each step of the MCMC. We perform an initial burn-in to let the walkers explore a wide region in parameter space during which each walker performs 300 steps to identify the region in parameter space that yields the greatest log-likelihood. We then perform an MCMC where the walkers are spread around the best parameter space region until our MCMC walkers converge. To insure the convergence of our MCMC, we require that 1) the log-likelihood of the best fit does not change over last 1000 steps of the MCMC chain and 2) the distribution of walkers along each parameters over the last 1000 steps is constant. Lastly, we build a posterior probability distribution and compute the 1σ confidence region of each parameter by marginalizing over all the walkers, over the last 1000 MCMC steps, along each parameter.

3.5.2 Simultaneous ground-based and *Spitzer* observations

If we cannot evaluate the microlensing parameters from the *Spitzer* observations alone, we use published ground-based observations to further constrain the microlensing parameters by measuring the microlens parallax. As explained in Section 3.3, both ground-based and space-based light curves are generated and fitted simultaneously. To accommodate the additional data set, we modify the log-likelihood function to

$$\ln L = -\frac{\chi_{\text{Spit}}^2}{2} - \sum_{i=1}^{N_{\text{dat},s}} \ln \lambda_s \sigma_{y_i,s} - \frac{N_{\text{dat},s}}{2} \ln 2\pi + \ln L_{\text{reg}} + \ln L_{\text{ground}}, \quad (17)$$

where $\ln L_{\text{ground}}$ accounts for the goodness of fit to the ground-based observations and is defined as

$$\ln L_{\text{ground}} = -\sum_{i=1}^{N_{\text{dat},g}} \frac{[F_g(t_i) - F_{\mu\text{lens},g}(t_i)]^2}{2(\lambda_g \sigma_{y_i,g})^2} - \sum_{i=1}^{N_{\text{dat},g}} \ln \lambda_g \sigma_{y_i,g} - \frac{N_{\text{dat},g}}{2} \ln 2\pi. \quad (18)$$

The s and g subscripts denote the space-based and ground observations, respectively. Following Yee et al. (2012) and Calchi Novati et al. (2018), we multiply the *Spitzer* uncertainties, $\sigma_{y_i,s}$ and σ_{raw} , by a factor, λ_s , and the ground-based observations uncertainties, $\sigma_{y_i,g}$, by λ_g . We then fit the data using the procedure in the previous subsection with the addition of the scaling factors as fit parameters.

3.6 Model comparison

While most microlensing analyses use χ^2 as a metric for model comparison, we opted to use the Bayesian information criterion (BIC) instead, particularly when comparing models with different number of parameters such as the 1L1S and 2L1S models. Generally, increasing the number of parameters in a model also increased its flexibility. Consequently, the fit using a model with more parameters is likely to have a smaller χ^2 . For this reason, we compute the BIC for each model (Schwarz et al. 1978; Wit, Heuvel & Romeijn 2012):

$$\text{BIC} = N_{\text{par}} \ln N_{\text{dat}} - 2 \ln L, \quad (19)$$

where N_{par} is the number of fit parameters, N_{dat} is the total number of ground-based and space-based data points and $\ln L$ is the log-likelihood function defined in Section 3.5.

4 EXAMPLES

We applied our method to two microlensing events. Note that, we assume that the target is the only time-variable source in the aperture box used to extract the raw photometry. In principle, if the nearby sources are stable, then the time-varying contamination from these sources will be modelled by PLD. However, if they are variable sources, then one would need to model their variability as well, since PLD only decorrelates against non-astrophysical variation. For this reason, we selected targets that are located in less crowded fields or with only stable and fainter sources nearby.

The first OGLE-2017-BLG-1140, has *Spitzer* observations covering the entire event, allowing us to constrain the microlensing parameters solely with the space-based data. For the second example, OGLE-2015-BLG-0448, the *Spitzer* data do not cover the entire microlensing event. We therefore perform a simultaneous fit to the *Spitzer* and OGLE observations.

Moreover, we selected these published events because the *Spitzer* observations offer good coverage of the entire event. Note that typical microlensing *Spitzer* observations do not benefit from the same generous coverage due to observing strategy of the *Spitzer* microlensing program described in Yee et al. (2015b). Poor coverage of an event makes the estimation of the microlensing parameters more challenging, in particular the microlens parallax parameters. Since our objective is to test the effectiveness of PLD, we chose two events with good coverage to adequately test the performance of the detector model during the fitting process.

Table 1. OGLE-2017-BLG-1140 fit parameters based on *Spitzer* data.

Parameter	Single lens	Binary lens
BIC	5671.78	4231.42
t_0 [HJD-2457939.0]	0.848 ± 0.007	0.789 ± 0.007
u_0	0.192 ± 0.01	0.125 ± 0.007
t_E (d)	$12.6^{+0.6}_{-0.5}$	16.2 ± 0.8
s	—	0.9 ± 0.02
q	—	$0.0048^{+0.0006}_{-0.0005}$
ρ	—	0.032 ± 0.003
α (rad)	—	$0.59^{+0.008}_{-0.007}$
$F_{b,Spitzer}$	82.0 ± 1.0	86.5 ± 1.0
$F_{s,Spitzer}$	$26.0^{+2.0}_{-1.0}$	18.0 ± 1.0
RMS (MJy str $^{-1}$)	1.57	0.71

4.1 OGLE-2017-BLG-1140b

The event OGLE-2017-BLG-1140, (RA, Dec.) = (17:43:31.93, −24:31:21.6) was first analysed by Calchi Novati et al. (2018). In their analysis, the *Spitzer* light curve exhibits a stronger deviation from the single lens model than the deviation in ground-based light curve. We opt to apply our method solely to the space-based observations as it covers the entire event allowing us to estimate the microlensing parameters without ground-based observations. The *Spitzer* observations consist of 43 epochs, each consisting six dither positions. We first fit a single lens model to the raw light curve to estimate an initial root mean square (RMS) residuals of 6.80 MJy str $^{-1}$. We fit a single lens and binary lens models to the observations using the method described in Section 3.5.1; the results are listed in Table 1 and shown in Fig. 3. While Calchi Novati et al. (2018) do not report the best-fitting parameters for their 1L1S fit, their best-fitting parameters for the binary lens model to the *Spitzer* light curve are within 3σ of ours.

The final residual RMS of our PLD method is ~ 4 and ~ 9 times lower than the raw photometric scatter, for the single lens and binary lens fit, respectively. We report each fit's BIC to compare their goodness of fit. There is a noticeably larger scatter in the residuals from the single lens model in Fig. 3. The scatter is significantly more pronounced near the time of planetary anomaly predicted by the binary lens model. Additionally, we see in Table 1 that the binary lens model is strongly preferred with a $\Delta BIC > 1000$. This test confirms that our detector model is not overfitting the planetary anomaly in the *Spitzer* data.

We measure the level of correlation in the residuals of our fits by calculating the standard deviation of the binned residuals (Fig. 4). We compare them with expected standard deviations if the residuals were white noise. We see that the scatter in the residuals for the single lens fit is consistently larger than the binary fit which confirms that the binary model is preferred. Note that the step-like residual RMS is due to the non-regular cadence of the data: the roughly constant RMS scatter in Fig. 4 for time-scales shorter than a day is due to the epoch cadence of the observations and the large step at very short time-scale is evaluated time-scale shorter than the time interval between two exposures at two different dither positions within the same epoch. Since the cadence of observations is of the order of 1 d, only anomalies on longer time-scales can be confidently detected; our residuals RMS reaches the white noise limit on these time-scales.

4.2 OGLE-2015-BLG-0448

The event OGLE-2015-BLG-0448, (RA, Dec.) = (18:10:14.38, −31:45:09.4), was first presented by Poleski et al. (2016), who used the photometry from Calchi Novati et al. (2015b). The ground-based observations display no significant deviation from the single lens model. The *Spitzer* residuals, however, show an obvious deviation

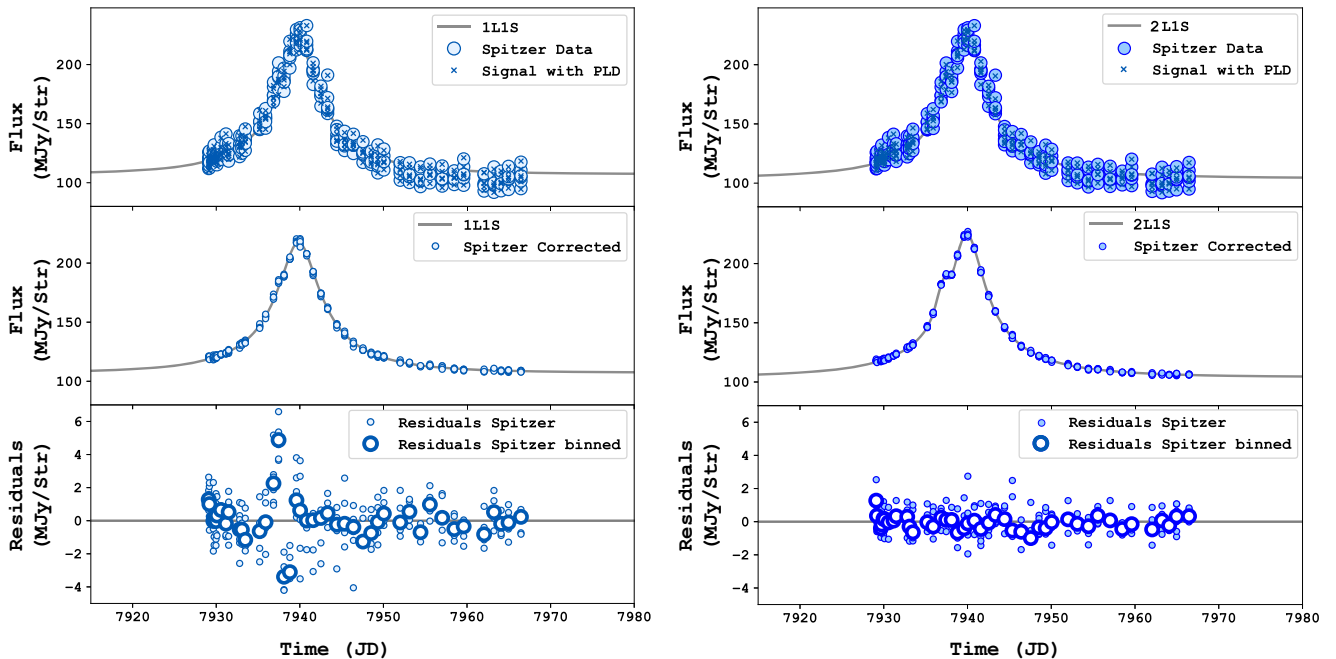


Figure 3. The single-lens-single-source (1L1S; left) and binary-lens-single-source (2L1S; right) fits to the *Spitzer* observations of OGLE-2017-BLG-1140. The top panels show the raw aperture as the blue circles, while the blue x's represent the best-fitting model including the detector noise model. The grey line represents the best-fitting astrophysical model. The second panels show the corrected photometry after PLD. Again, the grey line represents the best-fitting astrophysical model. The bottom panels show the residuals as filled blue circles and binned residuals for each epoch as white-filled circles.

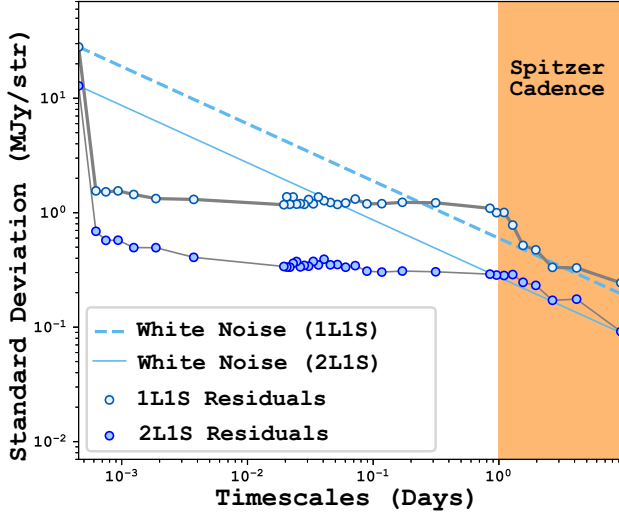


Figure 4. Standard deviation of our models fit to the *Spitzer* observations of OGLE-2017-BLG-1140 on different time-scales. The dashed and solid light blue lines represent the expected standard deviations for the single lens and binary lens model if our residuals had been white noise. The light and dark blue dots are the calculate standard deviations for the 1L1S and 2L1S models, respectively. The orange-shaded area represents the time-scales of interest for microlensing anomalies in the *Spitzer* data.

from a 1L1S model. There are many possible explanations for correlated residuals: (1) leftover instrumental systematics or (2) possible microlensing origin. The latter is possible in principle since the ground-based and space-based observatories probe different parts of the Einstein ring (Gould & Horne 2013). For example, the binary anomaly of OGLE-2018-BLG-1130 was only detected by *Spitzer* while showing no binarity in the ground-based observations (Wang et al. 2018).

For OGLE-2015-BLG-0448, Poleski et al. (2016) explored different possible microlensing scenarios to explain the data: (1) a binary source or (2) a binary lens. The binary source hypothesis is ruled out as the source is already very red, so it would also appear in the OGLE data. As for the binary lens scenario, they attempt a binary lens fit to the observations and find that a Saturn-mass planet can explain the observations. They also note that the best-fitting binary

lens model does not remove all of the time-correlated residuals, hence, unmodelled systematics is not ruled out. Consequently, they do not claim to have detected a planet.

We apply our PLD method to this event by fitting a single-lens-single-source 1L1S model to the data. Since the *Spitzer* observations only partially cover the event, we used OGLE ground-based observations to further constrain the microlensing parameters as described in Section 3.5.1. The *Spitzer* observations consist of 210 epochs, each consisting of 6 different dithers. A total of 12 dither positions were used as shown in Fig. 1. For the OGLE data, we used 59 data points from HJD = 2457084.88043 to HJD = 2457301.5155. The single lens model suffers from a four-fold degeneracy. The results from our fits are presented in Table 2. The raw *Spitzer* photometry had an RMS scatter $5.90 \text{ MJy str}^{-1}$ and our method reduced the scatter by a factor of ~ 4 .

In Fig. 5, we compare our corrected photometry with the photometry from Poleski et al. (2016) obtained using Calchi Novati et al.'s (2015b) method. As *Spitzer* flux extracted by Calchi Novati et al. (2015b) is in arbitrary units, we rescaled their light curve such that the peak and the baseline is equal to our decorrelated light curve. We note that the significant trend observed by Poleski et al. (2016) is not present in our single lens fit residuals. Hence, the deviation from the single models in the previous analysis of OGLE-2015-BLG-0448 were likely due to detector systematics not accounted for by the Calchi Novati et al. (2015b) reduction. To further evaluate the performance of PLD, we evaluate the residuals RMS of our best-fitting single lens model with the lowest BIC at different time-scales and compare it with the residual RMS from Poleski et al.'s (2016) single lens fit. We note that Calchi Novati et al.'s (2015b) method combines all dithers per epoch to evaluate the photometry while we use all exposure in our decorrelation, hence, evaluating the scatter for a given time-scale is essential for the comparison. The standard deviations versus time-scales calculations are presented in Fig. 6. While Poleski et al.'s (2016) residuals are slightly less scattered at short time-scales, they are significantly more correlated at time-scales longer than the *Spitzer* observations cadence. On a time-scale of $\sim 9 \text{ d}$, our method reduced the noise by a factor of 5.9, when compared to the single lens and binary lens fit, respectively. On a time-scale of ~ 4 and $\sim 2.5 \text{ d}$, our method improves the noise by a factor of 2.5 and 1.5, respectively, in comparison with the photometry from Calchi Novati et al. (2015b). While our single lens residual RMS is above the photon noise limit, it still

Table 2. OGLE-2015-BLG-0448 Fits parameters based on *Spitzer* and OGLE data.

Parameter	Single lens (+, +)	Single lens (+, -)	Single lens (-, +)	Single lens (-, -)
BIC	18358.04	18352.85	18367.05	18358.76
$t_0[\text{HJD} - 2457213.0]$	$0.161^{+0.009}_{-0.01}$	0.162 ± 0.009	0.162 ± 0.009	0.160 ± 0.009
u_0	$0.0875^{+0.0007}_{-0.001}$	$0.0881^{+0.0007}_{-0.001}$	$-0.0879^{+0.001}_{-0.0007}$	$-0.088^{+0.0009}_{-0.0007}$
$t_E \text{ (d)}$	$60.8^{+0.6}_{-0.4}$	$60.6^{+0.6}_{-0.4}$	$60.6^{+0.6}_{-0.4}$	$60.6^{+0.5}_{-0.4}$
$\pi_{E,N}$	-0.0178 ± 0.0003	-0.136 ± 0.001	$0.1145^{+0.0008}_{-0.0012}$	0.0014 ± 0.0003
$\pi_{E,E}$	$-0.0922^{+0.0008}_{-0.0007}$	$-0.0886^{+0.0008}_{-0.0006}$	$-0.1084^{+0.001}_{-0.0008}$	$-0.0968^{+0.0009}_{-0.0007}$
$F_{b,OGLE}$	$0.04^{+0.05}_{-0.03}$	$0.02^{+0.05}_{-0.03}$	$0.03^{+0.05}_{-0.03}$	$0.02^{+0.04}_{-0.03}$
$F_{s,OGLE}$	$4.71^{+0.04}_{-0.05}$	$4.73^{+0.04}_{-0.05}$	$4.73^{+0.04}_{-0.05}$	$4.73^{+0.04}_{-0.05}$
$F_{b,Spitzer}$	32.1 ± 0.3	32.0 ± 0.3	32.4 ± 0.3	32.1 ± 0.3
$F_{s,Spitzer}$	14.3 ± 0.1	$14.7^{+0.1}_{-0.2}$	13.7 ± 0.1	14.3 ± 0.1
λ_{OGLE}	2.0 ± 0.2	2.0 ± 0.2	2.0 ± 0.2	2.0 ± 0.2
$\lambda_{Spitzer}$	2.58 ± 0.04	$2.58^{+0.04}_{-0.03}$	2.59 ± 0.04	2.58 ± 0.04
RMS (MJy str $^{-1}$)	1.44	1.43	1.44	1.43

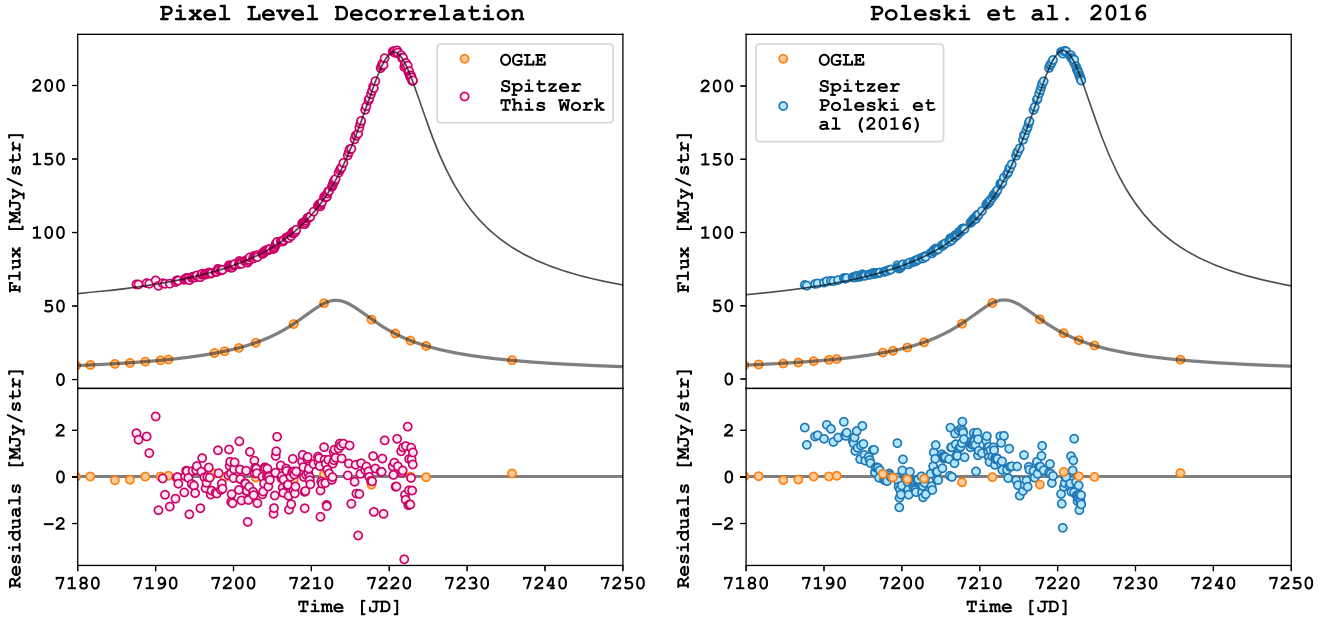


Figure 5. Our best-fitting 1L1S model with the lowest BIC, (+, −), and Poleski et al.’s (2016) 1L1S model with the lowest χ^2 , (−, +), are shown in the left-hand and right-hand panels, respectively. In the top panels, the pink and blue dots represent our PLD corrected light curve and the photometry obtained on the current *Spitzer* Microlensing pipeline described in Calchi Novati et al. (2015b), respectively. The orange dots represent the OGLE photometry. In the bottom panels, the pink and blue dots represent the residuals from our PLD decorrelation and the current *Spitzer* microlensing pipeline, respectively. Note that PLD removes the correlated residuals in the Poleski et al (2016) data that could be mistaken for a planetary anomaly.

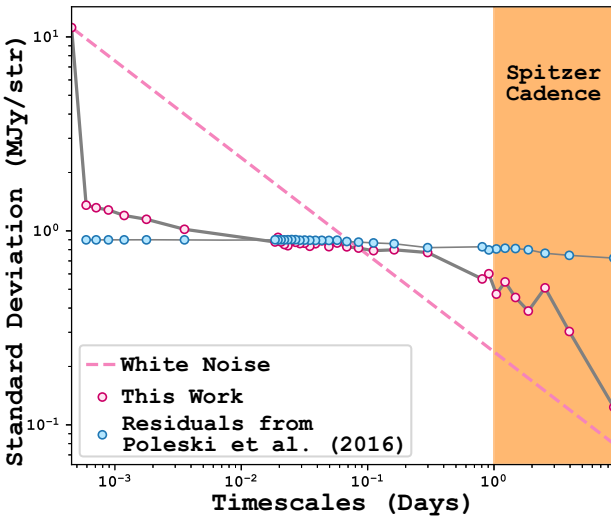


Figure 6. The standard deviation of our PLD corrected 1L1S (+, −) residuals and Poleski et al.’s (2016) 1L1S (−, +) residuals are represented by the pink and blue dots, respectively. The dashed pink line represents the expected standard deviations if our residuals had been white noise. The orange-shaded area represents the time-scales of interest for microlensing anomalies in the *Spitzer* data.

outperforms the current pipeline used for the *Spitzer* microlensing campaign.

5 DISCUSSION AND CONCLUSION

We present an alternative method to extract and reduce photometry for the *Spitzer* microlensing campaigns using PLD, a method initially developed to decorrelate light curves of transiting exoplanets with

Spitzer. This method uses the fractional flux recorded by each pixel as regressors to model the systematics. PLD models the instrumental systematics and flux contribution from nearby stars. Advantages of this method includes not requiring precise centroid measurements for each exposure, not needing dithered observations, and better noise reduction.

We have tested PLD on *Spitzer* observations of OGLE-2017-BLG-1140 and OGLE-2015-BLG-0448. We find that PLD is able to reduce the RMS scatter in the raw photometry by at least a factor of 1.5. We also find that for the event OGLE-2015-BLG-0448, our decorrelation produces photometry up to an order of magnitude more precise than the Calchi Novati et al. (2015b) pipeline on time-scales of microlensing anomalies. We note that there are significant differences between the two methods. Most published *Spitzer* microlensing light-curve analyses are done in two steps: first reduce the photometry, then evaluate the microlensing parameters. Similarly to photometry extraction methods developed for *K2* microlensing observations (Zhu et al. 2017a; Poleski et al. 2019), the PLD method fits the microlensing model and the noise model simultaneously.

We note that both events tested in this work have benefited from *Spitzer* observations with good coverage over the duration of the microlensing event. For events with poor coverage, the microlensing parameters will be difficult to constrain with great precision. However, to model the detector systematics with PLD, the key is to have more data to better characterize the detector noise. Even without full coverage of the event, PLD will be able to remove the systematics if there are a large number of exposures. The microlensing parameters, however, will have larger uncertainties.

The *Spitzer* microlensing campaign has enabled unprecedented microlens parallax measurements to build a planet distribution in the galaxy. However, tensions have been claimed between the results from this campaign and prediction from commonly used Galactic models (Koshimoto & Bennett 2019) suggesting that the photometry extraction could be the source of error. Alternative photometry

extraction schemes such as PLD could help investigate the source of the discrepancies.

The PLD technique for noise characterisation is not uniquely applicable to *Spitzer* observations. For example, PLD has been successful when applied to *K2* observations of transiting exoplanets (Luger et al. 2016, 2018). Hence, given the versatility of this method, it could be adapted to other microlensing campaigns with other space telescopes such as the *Kepler Space Telescope* for the *K2C9* campaign.

The forthcoming *Nancy Grace Roman Space Telescope*, formerly known as the *Wide-Field Infrared Survey Telescope* (Spergel et al. 2015), will perform a Galactic Exoplanet Survey (RGES) and is expected to detect thousands of exoplanets via microlensing (Penny et al. 2019; Johnson et al. 2020). However, its infrared detector will share similarities with *Spitzer*'s, including intrapixel sensitivity variations. Beyond more standard methods to address this issue (Anderson & King 2000), the photometry reduction for the RGES may also benefit from decorrelation methods such as PLD.

ACKNOWLEDGEMENTS

We would like to thank our referee, D. Bennett, for constructive criticism. We would also like to thank P. Mroz for the discussions of microlensing modelling and R. Poleski for help with MULENSMODEL and useful comments on the manuscript. This work was supported in part through a Visiting Graduate Researcher Fellowship (VGRF) at Caltech's Infrared Processing and Analysis Center (Caltech/IPAC), McGill University's Graduate Mobility Award, the Technologies for Exo-Planetary Science (TEPS) International Internship program, and the Natural Sciences and Engineering Research Council of Canada (NSERC)'s Postgraduate Scholarships-Doctoral Fellowship. This work is based on archival data obtained with the *Spitzer Space Telescope*, which is operated by the Jet Propulsion Laboratory, California Institute of Technology under a contract with NASA. Support for this work was provided by an award issued by JPL/Caltech.

DATA AVAILABILITY

The *Spitzer* data underlying this article are publicly available and were provided by NASA/IPAC Infrared Science Archive. The remaining data and code underlying this article will be shared on reasonable request to the corresponding author.

REFERENCES

Albrow M. D. et al., 2018, *ApJ*, 858, 107
 Anderson J., King I. R., 2000, *PASP*, 112, 1360
 Bozza V., 2010, *MNRAS*, 408, 2188
 Bozza V. et al., 2016, *ApJ*, 820, 79
 Bozza V., Bachelet E., Bartolić F., Heintz T. M., Hoag A. R., Hundertmark M., 2018, *MNRAS*, 479, 5157
 Calchi Novati S. et al., 2015a, *ApJ*, 804, 20
 Calchi Novati S. et al., 2015b, *ApJ*, 814, 92
 Calchi Novati S. et al., 2018, *AJ*, 155, 261
 Calchi Novati S. et al., 2019, *AJ*, 157, 121
 Chung S.-J. et al., 2017, *ApJ*, 838, 154
 Chung S.-J. et al., 2019, *ApJ*, 871, 179
 Deming D. et al., 2015, *ApJ*, 805, 132
 Fazio G. G. et al., 2004, *ApJS*, 154, 10
 Foreman-Mackey D., Hogg D. W., Lang D., Goodman J., 2013, *PASP*, 125, 306
 Gaudi B. S., 2012, *ARA&A*, 50, 411

Gould A., 1994, *ApJ*, 421, L75
 Gould A., Horne K., 2013, *ApJ*, 779, L28
 Gould A. et al., 2020, *J. Korean Astron. Soc.*, 53, 9
 Han C. et al., 2016, *ApJ*, 828, 53
 Han C. et al., 2017, *ApJ*, 834, 82
 Han C. et al., 2018, *ApJ*, 859, 82
 Henderson C. B. et al., 2016, *PASP*, 128, 124401
 Hirao Y., et al., *AJ*, 2020, 160, 74
 Huang C. X., Penev K., Hartman J. D., Bakos G. Á., Bhatti W., Domsa I., de Val-Borro M., 2015, *MNRAS*, 454, 4159
 Ingalls J. G. et al., 2016, *AJ*, 152, 44
 Johnson S. A., Penny M. T., Gaudi B. S., Kerins E., Rattenbury N. J., Robin A. C., Calchi Novati S., Henderson C. B., 2020, preprint([arXiv:2006.10760](https://arxiv.org/abs/2006.10760))
 Jung Y. K. et al., 2019, *AJ*, 158, 28
 Koshimoto N., Bennett D., 2019, preprint([arXiv:1905.05794](https://arxiv.org/abs/1905.05794))
 Li S. S. et al., 2019, *MNRAS*, 488, 3308
 Luger R., Agol E., Kruse E., Barnes R., Becker A., Foreman-Mackey D., Deming D., 2016, *AJ*, 152, 100
 Luger R., Kruse E., Foreman-Mackey D., Agol E., Saunders N., 2018, *AJ*, 156, 99
 Morello G., 2015, *ApJ*, 808, 56
 Morello G., Waldmann I. P., Tinetti G., Peres G., Micela G., Howarth I. D., 2014, *ApJ*, 786, 22
 Paczynski B., 1986, *ApJ*, 304, 1
 Penny M. T., Gaudi B. S., Kerins E., Rattenbury N. J., Mao S., Robin A. C., Calchi Novati S., 2019, *ApJS*, 241, 3
 Poleski R., Yee J. C., 2019, *Astron. Comput.*, 26, 35
 Poleski R. et al., 2016, *ApJ*, 823, 63
 Poleski R., Penny M., Gaudi B. S., Udalski A., Ranc C., Barentsen G., Gould A., 2019, *A&A*, 627, A54
 Refsdal S., Rosseland S., 1966, *MNRAS*, 134, 315
 Ryu Y. H. et al., 2018, *AJ*, 155, 40
 Schwarz G. et al., 1978, *The Ann. Stat.*, 6, 461
 Shan Y. et al., 2019, *ApJ*, 873, 30
 Shin I. G. et al., 2017, *AJ*, 154, 176
 Shin I. G. et al., 2018, *ApJ*, 863, 23
 Shvartzvald Y. et al., 2015, *ApJ*, 814, 111
 Shvartzvald Y. et al., 2016, *ApJ*, 831, 183
 Shvartzvald Y. et al., 2017, *ApJ*, 840, L3
 Shvartzvald Y. et al., 2019, *AJ*, 157, 106
 Spergel D. et al., 2015, preprint([arXiv:1503.03757](https://arxiv.org/abs/1503.03757))
 Stevenson K. B. et al., 2012, *ApJ*, 754, 136
 Street R. A. et al., 2016, *ApJ*, 819, 93
 Tsapras Y., 2018, *Geosciences*, 8, 365
 Udalski A., Szymański M. K., Szymański G., 2015a, *Acta Astron.*, 65, 1
 Udalski A. et al., 2015b, *ApJ*, 799, 237
 Udalski A. et al., 2018, *ApJ*, 853, 70
 Wang D., Hogg D. W., Foreman-Mackey D., Schölkopf B., 2016, *PASP*, 128, 094503
 Wang T. et al., 2018, *ApJ*, 860, 25
 Werner M. W. et al., 2004, *ApJS*, 154, 1
 Wit E., Heuvel E. V. d., Romeijn J.-W., 2012, *Stat. Neerlandica*, 66, 217
 Yee J. C. et al., 2012, *ApJ*, 755, 102
 Yee J. C. et al., 2015a, *ApJ*, 802, 76
 Yee J. C. et al., 2015b, *ApJ*, 810, 155
 Yoo J. et al., 2004, *ApJ*, 616, 1204
 Zang W. et al., 2019, *ApJ*, 897, 180
 Zang W. et al., 2020, *ApJ*, 891, 3
 Zhu W. et al., 2015a, *ApJ*, 805, 8
 Zhu W. et al., 2015b, *ApJ*, 814, 129
 Zhu W. et al., 2016, *ApJ*, 825, 60
 Zhu W. et al., 2017a, *PASP*, 129, 104501
 Zhu W. et al., 2017b, *AJ*, 154, 210
 Zhu W. et al., 2017c, *ApJ*, 849, L31

This paper has been typeset from a \LaTeX file prepared by the author.