

The SAMI galaxy survey: a range in S0 properties indicating multiple formation pathways

Simon Deeley,^{1★} Michael J. Drinkwater¹, Sarah M. Sweet^{1,2,3}, Jonathan Diaz,⁴ Kenji Bekki,⁴ Warrick J. Couch,² Duncan A. Forbes,² Joss Bland-Hawthorn⁵, Julia J. Bryant,^{3,5,6} Scott Croom^{3,5}, Luca Cortese^{3,4}, Jon S. Lawrence,⁷ Nuria Lorente,⁸ Anne M. Medling^{9,10†}, Matt Owers,^{11,12} Samuel N. Richards¹³ and Jesse van de Sande^{3,5}

¹*School of Mathematics and Physics, University of Queensland, Brisbane, QLD 4072, Australia*

²*Centre for Astrophysics and Supercomputing, Swinburne University, Hawthorn, VIC 3122, Australia*

³*ARC, Centre of Excellence for All Sky Astrophysics in 3 Dimensions (ASTRO 3D), Australia*

⁴*International Centre for Radio Astronomy Research, The University of Western Australia, 35 Stirling Highway, Crawley, WA 6009, Australia*

⁵*Sydney Institute for Astronomy, School of Physics, The University of Sydney, NSW 2006, Australia*

⁶*Australian Astronomical Optics, AAO-USydney, School of Physics, University of Sydney, NSW 2006, Australia*

⁷*Australian Astronomical Optics - Macquarie, Macquarie University, NSW 2109, Australia*

⁸*AAO-MQ, Faculty of Science and Engineering, Macquarie University, 105 Delhi Rd, North Ryde, NSW 2113, Australia*

⁹*Research School of Astronomy and Astrophysics, Australian National University, Canberra, ACT 2611, Australia*

¹⁰*Ritter Astrophysical Research Center, University of Toledo, Toledo, OH 43606, USA*

¹¹*Department of Physics and Astronomy, Macquarie University, NSW 2109, Australia*

¹²*Astronomy, Astrophysics and Astrophotonics Research Centre, Macquarie University, Sydney, NSW 2109, Australia*

¹³*SOFIA Science Center, USRA, NASA Ames Research Center, Building N232, M/S 232-12, PO Box 1, Moffett Field, CA 94035-0001, USA*

Accepted 2020 August 3. Received 2020 August 3; in original form 2020 May 14

ABSTRACT

It has been proposed that S0 galaxies are either fading spirals or the result of galaxy mergers. The relative contribution of each pathway and the environments in which they occur remain unknown. Here, we investigate stellar and gas kinematics of 219 S0s in the SAMI Survey to look for signs of multiple formation pathways occurring across the full range of environments. We identify a large range of rotational support in their stellar kinematics, which correspond to ranges in their physical structure. We find that pressure-supported S0s with v/σ below 0.5 tend to be more compact and feature misaligned stellar and gas components, suggesting an external origin for their gas. We postulate that these S0s are consistent with being formed through a merger process. Meanwhile, comparisons of ellipticity, stellar mass, and Sérsic index distributions with spiral galaxies show that the rotationally supported S0s with v/σ above 0.5 are more consistent with a faded spiral origin. In addition, a simulated merger pathway involving a compact elliptical and gas-rich satellite results in an S0 that lies within the pressure-supported group. We conclude that two S0 formation pathways are active, with mergers dominating in isolated galaxies and small groups, and the faded spiral pathway being most prominent in large groups ($10^{13} < M_{\text{halo}} < 10^{14}$).

Key words: galaxies: elliptical and lenticular, cD – galaxies: evolution – galaxies: kinematics and dynamics.

1 INTRODUCTION

The visual morphological class of S0 galaxies was originally defined by Hubble (1926) as an intermediate class between early-type elliptical galaxies and late-type spirals. S0s feature a central bulge surrounded by a disc, reminiscent of most spiral galaxies. However, the gas content of S0s is significantly lower, they exhibit no (or extremely weak) spiral structure, and their redder colours are similar to that of ellipticals (Freeman & Jones 1970; Sandage & Visvanathan 1978). While some S0s have been observed to have ongoing star formation, the rate of star formation is typically insignificant compared to that seen in spirals (Temi, Brighenti & Mathews 2009).

The relative fraction of S0 galaxies is observed to increase with density in nearby rich clusters (Dressler 1980), with S0s becoming the most common galaxy in the densest clusters. Observations of rich clusters at redshifts up to $z \sim 0.5$ indicate that there has been a build-up in the S0 population in such systems over the last 5 Gyr, with a corresponding decrease in their spiral population (e.g. Dressler et al. 1997). Significant numbers of S0 galaxies are also seen within smaller galaxy groups, where the evolution of the S0 fraction with redshift is more rapid compared to more massive groups and clusters (Poggianti et al. 2009; Just et al. 2010). The location of S0 formation is often assumed to be within the large clusters they are found in, however, observations by Just et al. (2010) are consistent with a scenario whereby S0s form within smaller groups which later fall in and merge into the larger cluster systems. The environments of small groups may be the most conducive to

* E-mail: s.deeley@uq.edu.au

† Hubble Fellow

S0 formation, where galaxy–galaxy interactions are expected to be more important than galaxy–environment interactions (Barnes & Hernquist 1992).

The properties of S0 galaxies in lower density environments also differ to those in clusters. S0 galaxies in high-density environments such as the Virgo cluster appear to have cores bluer (and therefore younger) than the surrounding disc (Johnston, Aragón-Salamanca & Merrifield 2014), while S0s in the low-density field environment feature redder cores relative to their discs (Tabor et al. 2017). This indicates either a different formation pathway for S0s in the field or S0 evolution after initial formation outside the cluster.

In addition, studies of S0 galaxies in field and cluster environments have revealed that those with significant gaseous emission are mainly found in the field and cluster outskirt regions. This suggests that either the gas is stripped as the galaxy falls into a cluster or that the elevated gas content arises from mergers or inflow of fresh gas, which may be more common in the lower density environments (Jaffé et al. 2014). Decoupled gas kinematics in isolated S0 galaxies also supports an external origin for the gas content in low-density environments (Katkov, Sil’chenko & Afanasiev 2014). Surveys of emission-selected S0s have revealed that a number of these objects feature a ring of gas emission accompanied by star formation activity (Ilyina, Sil’chenko & Afanasiev 2014).

Due to the common bulge/disc structure of spiral and S0 galaxies, and the anticorrelation seen between the fraction of the two classes as a function of local density, it is commonly assumed that S0s originate from spiral galaxies. Under that assumption, various physical processes have been proposed to explain the properties and locations of S0 galaxies. Formation via ram pressure stripping (Gunn & Gott 1972) occurs when a spiral galaxy travels through the intergalactic medium of a cluster (Owers et al. 2012). The interaction between the gas and dust in the spiral galaxy with that of the medium strips gas out of the galaxy (see e.g. Quilis, Moore & Bower 2000). Direct evidence supporting ram pressure stripping includes jellyfish galaxies, where new stars are seen forming in the streams of gas stripped out of a spiral galaxy (e.g. Ebeling, Stephenson & Edge 2014). Gravitational interactions in clusters (Larson, Tinsley & Caldwell 1980) and groups (Bekki & Couch 2011) between a gas-rich spiral and a neighbouring galaxy can thicken the disc and disrupt its spiral structure. Additional spiral – S0 processes include spiral–spiral mergers (Tapia et al. 2017) and halo stripping (Bekki, Couch & Shioya 2002).

A new pathway in lower density environments was recently proposed by Diaz et al. (2018), where an isolated, high-redshift compact elliptical (cE) experiences a merger with a smaller gas-rich disc galaxy. The modelling showed that the gas from the satellite forms a ringed disc around the core of the cE and a burst of star formation is triggered within it. While present, the gas ring features more coherent rotation relative to the stars, and therefore has higher v/σ values (where v is the rotational velocity and σ is the velocity dispersion). Once the gas has been depleted and star formation has ceased, the end result is an older core, a younger disc, and an extended halo, giving a negative age gradient with increasing radius. The remnants of the original elliptical leave a kinematic imprint on the resulting S0 galaxy, in the form of a flattened velocity profile. The stellar v/σ in the resulting S0 is found to be near zero in the centre and remains below 0.5 out to $2R_e$, which is in contrast to spiral merger scenarios (~ 1 , Bekki 1998) and fading spiral models (stellar $v/\sigma \sim 2$ –10, Quilis et al. 2000). Stellar v/σ profiles can therefore be used to identify S0s which may potentially originate from the cE + disc merger pathway. In addition, the negative population gradient expected from the cE + disc pathway

contrasts with the positive age gradient expected for spiral fading pathways, providing an additional distinguishing feature between the pathways.

Recent observations have suggested that there may be separate populations of S0 galaxies with different formation pathways. In a study of 21 S0s in extreme field and cluster environments, Coccato et al. (2020) found that those in clusters are more rotationally supported than those in the field, arguing that cluster S0s are formed via rapid removal of gas (e.g. ram pressure stripping), whereas mergers are involved in the formation of field S0s. In contrast, Rizzo, Fraternali & Iorio (2018) studied nine S0s in low-density environments and found that seven were consistent with a faded-spiral origin and two with a merger origin. Pak et al. (2019) compared nine S0s in the CALIFA survey to passive spirals and found a larger range of stellar population properties in the S0s relative to the passive spirals, indicating again that faded spirals may only be one of multiple S0 formation pathways. Recent work has therefore suggested multiple pathways may be active, however, the conclusions have been limited by small sample sizes and restricted environmental coverage.

To more clearly separate these potential S0 formation pathways, resolved kinematic data is needed in order to investigate the kinematic properties as a function of radius. New integral field surveys such as CALIFA (Sánchez et al. 2012) and the SAMI Galaxy Survey (Green et al. 2018) provide 2D spectral data for many galaxies. The advantage of SAMI is the coverage over a wide range of environments, allowing us to investigate the 2D kinematics of many S0s across the different environments in which they occur.

In this paper, the aims are first to corroborate the above claims that S0 galaxies have formed through both the faded spiral and merger pathways and secondly to test the cE + disc scenario by comparing the properties of the resulting S0 galaxy in simulations with those of observed S0s. In Section 2, we describe the galaxy sample used in this work. Section 3 outlines the methods used to analyse the observational data. Section 4 shows the derived kinematic and gas emission properties of observed S0 galaxies and compares them to the simulations. In Section 5, we discuss the results and in Section 6, we present our summary and conclusions.

We assume a Λ CDM cosmology with $\Omega_m = 0.3$, $\Omega_\Lambda = 0.7$, and $H_0 = 70 \text{ km s}^{-1} \text{ kpc}^{-1}$.

2 DATA

2.1 The SAMI survey

The observational data products used in this work were created by the SAMI Galaxy Survey (Bryant et al. 2015). The Sydney-AAO Multi-object Integral field spectrograph (SAMI; Croom et al. 2012) is mounted at the prime focus of the 3.9 m the Anglo-Australian Telescope, which provides a 1° diameter field of view. SAMI uses 13 fused fibre bundles (Hexabundles, Bland-Hawthorn et al. 2011; Bryant et al. 2014) with a high (75 per cent) fill factor. Each bundle contains 61 fibres of 1.6 arcsec diameter resulting in each hexabundle having a diameter of 15 arcsec. The hexabundles, as well as 26 sky fibres, are plugged into pre-drilled plates using magnetic connectors. SAMI fibres are fed to the double-beam AAO mega spectrograph (Sharp et al. 2006). For the SAMI Galaxy Survey, its 570V grating was used with the blue arm (3700–5700 Å), giving a resolution of $R = 1730$ ($\sigma = 74 \text{ km s}^{-1}$), and the R1000 grating with the red arm (6250–7350 Å) giving a resolution of $R = 4500$ ($\sigma = 29 \text{ km s}^{-1}$) (van de Sande et al. 2017). At least six pointings on each galaxy are weighted and combined to produce data cubes with a pixel

Table 1. Galaxy samples used in this work.

Class (1)	Region (2)	All (3)	Stellar kinematics (4)	Gas kinematics (5)
E	GAMA	104	35	22
	Cluster	100	43	12
S0	GAMA	354	134	80
	Cluster	259	85	11
Sp	GAMA	1030	116	98
	Cluster	137	30	9

Classes in column 1 are described in Section 3. Column 2 lists the regions of the SAMI survey, column 3 lists the total numbers of each galaxy class in the SAMI survey, and column 4 lists the number of galaxies in the final sample with a PSF $< 0.5 R_e$, ellipticity > 0.2 , and with stellar kinematic data out to $1.5 R_e$. Column 5 shows the number of galaxies which also have gas kinematic data out to $1.5 R_e$.

scale of $0.5 \times 0.5 \text{ arcsec}^2$ (Allen et al. 2015; Sharp et al. 2015). Here, we use data products released in Data Release 2 (Scott et al. 2018).

2.2 Galaxy sample

The SAMI survey was designed to cover a wide range of environments to allow for studies of galaxy properties as a function of local environment. To achieve this, the survey targeted two regions. The first coincides with the Galaxy and Mass Assembly (GAMA) survey (Driver et al. 2011), which covers 286 deg^2 and has a limiting r -band magnitude of 19.8. Since GAMA includes limited coverage of high-density cluster regions, SAMI targeted additional galaxies within eight large clusters in order to achieve a more complete coverage of environments (Owers et al. 2017). In both regions, galaxies were selected using the same volume-limited mass limits. Table 1 displays the number of S0s in each region of the SAMI survey (see below for details on classification).

2.3 Environment

The high completeness of the GAMA survey enabled a complete group catalogue to be constructed for galaxies in this region (Robotham et al. 2011). We used this catalogue to identify the host environment of each SAMI galaxy, depending on the mass of their host group halo. We define host group masses in the range $10^{11} < M_{\odot} < 10^{13}$ as low-mass groups and those with $M_{\odot} > 10^{13}$ as high-mass groups. Galaxies not associated with a group are identified as field galaxies and those located in the eight cluster regions outside of the GAMA field are identified as cluster galaxies.

High-resolution images of all SAMI galaxies within the GAMA region were taken using the Hyper-Suprime Cam on the Subaru Telescope in Hawaii (Aihara et al. 2018). These images were taken in five colour bands – g , i , r , Y , and z . The depth of the imaging extends to i -band magnitudes of 28 and the images have a resolution of $0.168 \text{ arcsec pixel}^{-1}$. The high depth and resolution of these images allow for the identification of both prominent and very faint structural features such as discs, shells, and tidal arms within and around the galaxy, providing clues to their evolutionary history.

For galaxies in the GAMA region, the Sérsic index, ellipticity, and effective radius are derived from a single component fit of SDSS imagery using the code GALFIT3 (Peng et al. 2010; Driver et al. 2011). In the cluster regions, these physical parameters are derived from r -band images from the SDSS and VLT Survey telescope/ATLAS surveys using the code PROFIT (Robotham et al. 2017; Owers

et al. 2019). The stellar masses in both regions were derived from mass/light ratios based on $g - i$ colours (Bryant et al. 2015).

2.4 Morphological classification

Galaxies in the SAMI Survey were visually classified by a subset of survey team members people using Sloan Digital Sky Survey imaging (Cortese et al. 2016). First, the galaxy was classed as an early or late type galaxy based on the absence or presence of a clear disc, spiral arm features and areas of star formation. In the second step, galaxies in the early-type category were classed as lenticular (S0) if a disc component was visible or elliptical (E) otherwise. Late-type galaxies were classed as either early spirals (Sa, bulge present) or late type spirals (Sp, no bulge visible). Classes were assigned only if 66 per cent of the classifiers agreed on the type. Intermediate classes (e.g. E/S0) were assigned to cases where 66 per cent agreed it was one or the other. For all other cases, the galaxy was classed as unknown. In our analysis, the Sa, Sa/Sp, and Sp classes are grouped into a single category labelled spirals and E/S0, S0, and S0/Sa are grouped together as S0s.

3 METHODS

In this section, we describe how we derive the physical parameters and radial kinematic profiles used in this work, as well as the method used to derive the stellar age profiles.

3.1 Kinematics

In order to allow for direct comparisons of S0 kinematics with the Diaz et al. (2018) simulation, we use the SAMI kinematic maps to derive radial profiles of the inclination-corrected velocity, the velocity dispersion, and their ratio for the stellar and gas components.

The method used to derive stellar kinematic maps for each galaxy is detailed in van de Sande et al. (2017). Briefly, both the red and blue arms are used for fitting the stellar kinematics, with the red arm convolved to match the spectral resolution in the blue arm. Elliptical annuli are used to derive the optimal stellar template for each region of the galaxy in order to mitigate strong radial gradients. The penalized pixel fitting code (pPXF Cappellari & Emsellem 2004) is then used on each spaxel, producing two-moment and four-moment data products. Here, we use the two-moment velocity and velocity dispersion, derived from Gaussian line-of-sight velocity dispersion fits to each spaxel. The fitting tool LZIFU (Ho et al. 2016) is used to derive the emission line physics for each spaxel (see Green et al. 2018, for full details). LZIFU simultaneously fits all the strong emission lines with both a single-component Gaussian fit and a multicomponent fit; here, we use the single component fit to investigate the emission line and gas kinematic profiles. The single component fit produces measurements of the emission-line velocity and velocity dispersion, as well as the flux for the strong emission lines.

For the gas and stellar velocity maps, spaxels with uncertainties greater than $\pm 15 \text{ km s}^{-1}$ were removed from the analysis. For the velocity dispersion maps, following van de Sande et al. (2017), we removed spaxels where the uncertainty is greater than 10 per cent of the dispersion value plus 25 km s^{-1} .

To assess the degree of rotational support in the SAMI S0s, we employed the widely used parameter v/σ , where v is the observed line-of-sight velocity and σ is the velocity dispersion. Following the recent work with IFU surveys (e.g. Cappellari et al. 2007; van de

Sande et al. 2018), we calculate v/σ using the following equation

$$\left(\frac{v}{\sigma}\right)^2 = \frac{\sum_{i=0}^{N_{\text{spax}}} F_i V_i^2}{\sum_{i=0}^{N_{\text{spax}}} F_i \sigma_i^2}, \quad (1)$$

where the sum is over all spaxels within a de-projected radius of $1.5 R_e$ and F_i is the flux of spaxel i . Values of v/σ approaching 1 indicate a rotationally supported structure, while values significantly lower than 1 indicate a pressure-supported structure. The de-projected radius of each spaxel corresponds to the major axis of the ellipse on which it is located, which was determined using the r -band-derived axial ratio and position angle (Cortese et al. 2016).

The position angles of the gas and stellar components were found by rotating a 3-pixel-wide slit through 360° and adopting the angle which resulted in the maximum velocity gradient.

3.1.1 Sub-sample

We initially looked to characterize the range of rotational support observed in our SAMI S0 sample. The range of effective radii covered by the fixed SAMI field of view varies depending on the galaxy's radius and the signal-to-noise ratio of the data away from the bright centre. The number of S0 galaxies within our sample that have useful data beyond a radius of $1.5 R_e$ begin to fall rapidly. We therefore selected a cutoff radius of $1.5 R_e$; all S0s whose data did not extend out to this radius were removed from the sample. At this distance, the stellar v/σ values for faded spiral pathways become more significantly separated from merger pathways due to the decreasing dominance of the central bulge.

To ensure that the stellar v/σ values were not contaminated by the dispersion-dominated centres of the galaxies, all galaxies for which the half width at half maximum of the point spread function was greater than half the effective radius were also removed from the analysis. The remaining sample contained a total of 219 galaxies ('Stellar Kinematics' in Table 1). The distribution of stellar mass versus Sérsic index and colour for the complete SAMI survey sample (blue), all S0s in the survey (grey) and our S0 final sample (black) are presented in Fig. 1, demonstrating that no significant bias is introduced by our sample selection criteria.

3.2 Radial profiles

Following (Cortese et al. 2016), to recover true radial velocity profiles from the line-of-sight velocity projections, we estimated the galaxy's inclination from the measured axial ratio

$$\cos i = \sqrt{\frac{(b/a)^2 - q_0^2}{1 - q_0^2}}, \quad (2)$$

where i is the inclination, q_0 is the assumed intrinsic ellipticity, and a and b are the major and minor axis, respectively. We used a commonly assumed intrinsic ellipticity for a disc galaxy of 0.2 (Tully & Pierce 2000; Cortese et al. 2016). We then applied this inclination to the observed line-of-sight velocity V_{klos} of each spaxel k as follows

$$V_k = \frac{V_{\text{klos}}}{\sin i \cos \theta_k}, \quad (3)$$

where θ is the azimuthal angle of the spaxel k in the galaxy coordinate frame. We determined the direction of rotation of the stellar and gas components by rotating a slice through the 2D map and determining the angle which produced the greatest velocity gradient along that slice. We removed all but the spaxels within 1.5 arcsec of the line

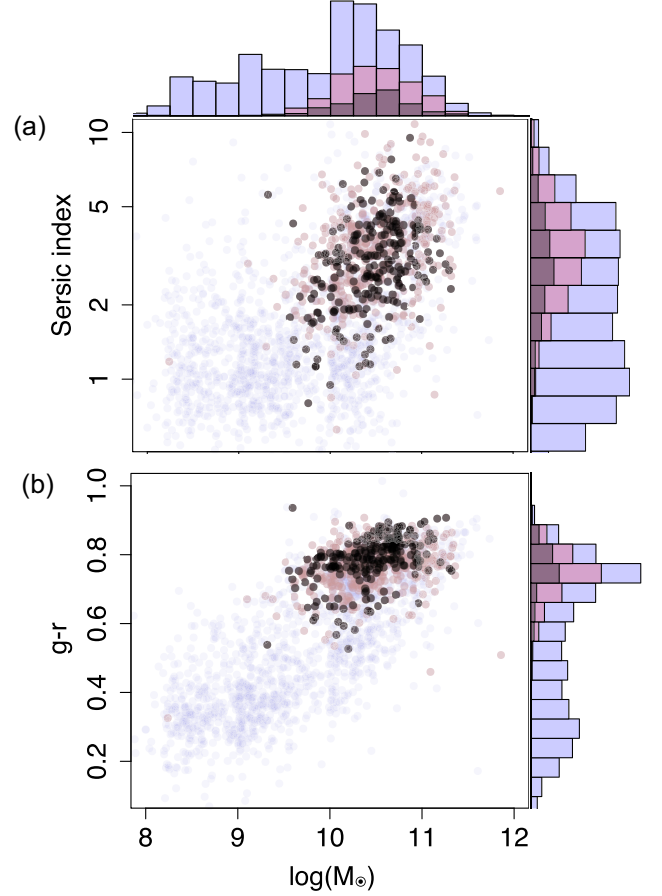


Figure 1. Sérsic and colour index versus stellar mass for our final S0 sample (black) in comparison to all S0s in the SAMI Survey (red) and the complete SAMI Survey sample (blue) with associated histograms of the distributions on the x - and y -axis. Our sample selection criteria does not introduce any significant bias relative to the overall S0 population.

along the strongest gradient and binned the remaining spaxels by their distance from the galaxy centre. From this, we constructed the radial profile of the velocity, velocity dispersions, and v/σ using the median values in each bin.

3.3 Stellar age profiles

We use the template-fitting code STARLIGHT (Cid Fernandes et al. 2005) to determine stellar age profiles for SAMI galaxies. We binned pixels into radial elliptical annuli, with each annulus covering a radial extent of two pixels. For each bin, we determined the median flux at each wavelength of all spaxels. We used stellar population templates from the BC03 model (Bruzual & Charlot 2003) for the fitting process. During the fitting process, STARLIGHT determines the mixture of stellar population templates that produces the best match to the observed spectrum. From this template mixture, we determined the final age of each radial bin (along with its metallicity) by finding the weighted average age of templates giving the best match. We estimated uncertainties in the derived stellar ages by using a Monte Carlo method, whereby random noise was added to the median spectrum in proportion to the standard error of the flux at each wavelength in the bin.

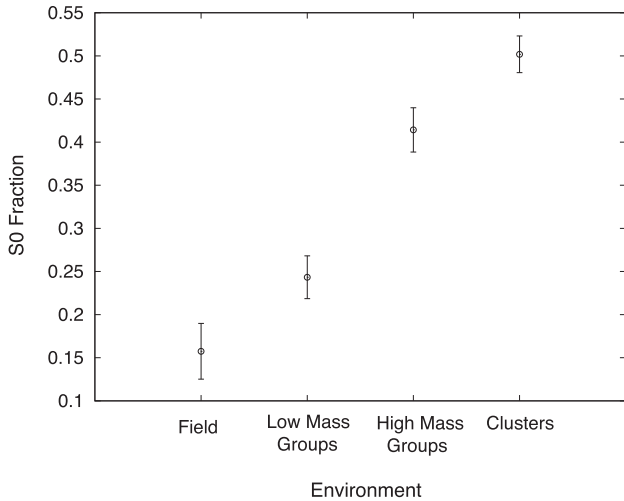


Figure 2. Fraction of galaxies in the field, low [$\log(M_{\odot}) < 13$] and high [$13 < \log(M_{\odot}) < 15$] mass groups, and clusters which are classed as S0. The error bars denote the 95 percent bimodal confidence intervals. As expected from previous results, the number of S0 galaxies steadily increases with the increasing density.

4 RESULTS

In this section, we first describe the environmental distribution of our S0 galaxy sample. We then characterize the spread in physical properties of these S0s, with a focus on their kinematics and structural parameters. After revealing a wide spread in the stellar v/σ values, we show that the optical morphology, gas kinematics, and age profiles of S0s at the extreme edges differ between these two groups.

4.1 Host environments of S0s

We first looked at the distribution of S0s across the different environments covered by SAMI. The fraction of all galaxies in the SAMI survey classified as S0s is shown in Fig. 2 as a function of environment. Here, the full galaxy sample is used (‘All’ in Table 1). As the mass of the host group increases, there is a strong increase in the fraction of S0 galaxies, consistent with previous findings (e.g. Dressler 1980). S0 galaxies account for around half of all galaxies located in the cluster regions, while within the field and low mass group environments, S0 galaxies still make up a non-negligible fraction of 0.16 and 0.24, respectively. This also demonstrates that our SAMI sample contains a significant fraction of S0s across all environments including the field and low mass groups.

4.2 Stellar kinematics and S0 subpopulations

We next looked to characterize the range of physical properties of S0s within the SAMI sample. A large range, or any bimodality present in the distributions, may indicate a wide range of conditions in the formation of S0s, or indeed the presence of multiple formation pathways. We focus here on the Sérsic index, effective radii, and stellar v/σ , since these properties together physically characterize the structure of the S0s and are affected by both the initial transformation and subsequent evolution. Fig. 3 presents the distribution of the final S0 sample (including both the GAMA and cluster regions) in the Sérsic versus ellipticity, Sérsic versus galaxy mass and effective radius versus stellar mass planes, with the points coloured by their stellar v/σ values. The distributions of S0s over each of

the parameters, and across each of the parameter spaces shown, appear to be continuous with no clear separation into bimodal populations.

It is, however, evident that there is a wide range in rotational support within the S0 population. In particular, the range in v/σ over the different parameter spaces forms a strong gradient in each case. S0s with low rotational support (v/σ below 0.5) generally feature lower ellipticities, higher Sérsic indices, slightly higher stellar masses, and smaller effective radii. These features indicate a more compact system with a higher degree of random stellar motions. The more rotationally supported S0s (v/σ above 0.5), meanwhile, tend to feature larger ellipticities, lower Sérsic indices, and larger effective radii. These taken together indicate that they feature a more prominent rotationally supported disc component. While the correlation between v/σ and ellipticity will be partly due to projection affects, the additional correlations between other structural parameters indicate that there is also an intrinsic shift in the structure of the S0s from high to low measured v/σ values. The lower ellipticities in the pressure-supported population may therefore also indicate an overall shift to more spherical structures, supported by the larger Sérsic index and higher degree of random motion.

Fig. 4 shows the average stellar v/σ values for S0s in the field, low mass (up to $10^{13} M_{\odot}$), high mass (over $10^{13} M_{\odot}$), and cluster regions. The observed trend in the groups is marginal relative to the uncertainty range, with S0s in the field featuring the lowest average stellar v/σ , increasing towards the high-mass groups, and then falling back in the cluster region. This reversal in the clusters could be due to either an increase in harassment experienced by these galaxies or the merging of group and field S0s into the clusters; this is discussed in Section 5.5. Alternatively, this may be a bias resulting from different sample selections between the GAMA and Cluster regions.

Hyper Suprime Cam (HSC) images of S0s with stellar v/σ above and below 0.5 are shown in Fig. 5. These high-resolution images are currently only available for the GAMA region. The galaxies shown here were blindly selected from a list of randomized catalogue IDs. More rotationally supported S0s generally feature smooth, well-defined discs with hints of remnant spiral structure in some cases, suggesting a passive evolutionary history. Many S0s in the pressure-supported regime (e.g. 323854 and 508315) feature signs of interactions and mergers, including shells, tidal features, and structures with orientations different to that of the rest of the galaxy.

Fig. 6(a) shows the distribution of our S0 sample on the widely used stellar v/σ versus ellipticity plot for the GAMA and cluster region. For comparison, Fig. 6(b) shows the same distribution for ellipticals in the GAMA region which meet the same kinematic selection criteria, with the slow rotators highlighted in orange. This illustrates that the distribution in kinematics seen among the S0s here encompasses a wider range than that covered by the slow- and fast-rotating ellipticals. The cluster S0s appear to be shifted towards lower ellipticities relative to the GAMA region. As a check for whether this is caused by a systematic bias in ellipticity measurements between the two regions due to different imagery (SDSS images for the GAMA region and VST images for the cluster regions, see Section 2.3), we also looked at the distribution of ellipticity for spiral galaxies and found no such shift. In addition, where an overlap between SDSS and VST was present, parameters derived from the two sets of imagery were checked for consistency (Owers et al. 2017). This suggests that S0s in the cluster region have intrinsically lower ellipticities, which could be due to the increased harassment these galaxies experience in the denser environment.

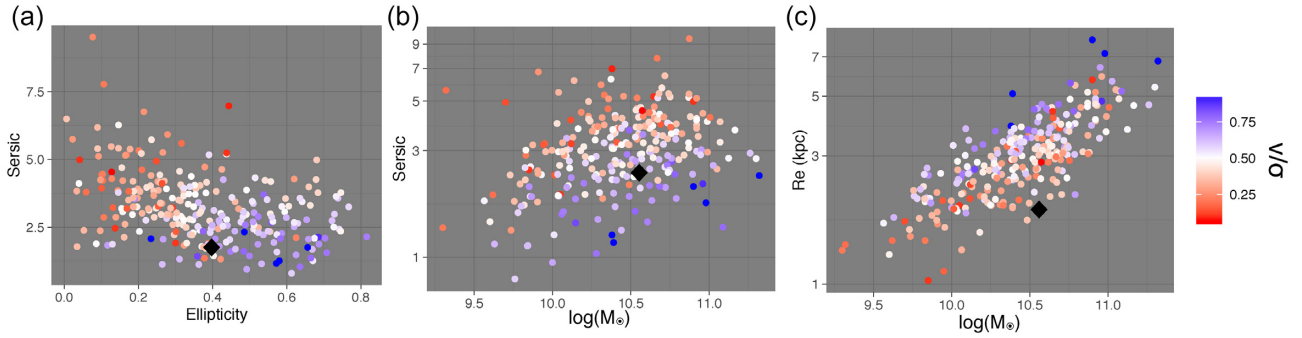


Figure 3. Distributions of our final S0 sample over Sérsic index versus ellipticity (a), versus stellar mass (b), and the effective radii versus stellar mass (c). Points are shaded according to their v/σ value, with bluer points showing more rotationally supported S0s. A gradient in v/σ is evident over each of these parameter spaces, showing that higher rotational support corresponds to lower Sérsic indexes and larger effective radii. The black diamond corresponds to the locations of the Diaz et al. (2018) fiducial model, which has a stellar v/σ value of around 0.2.

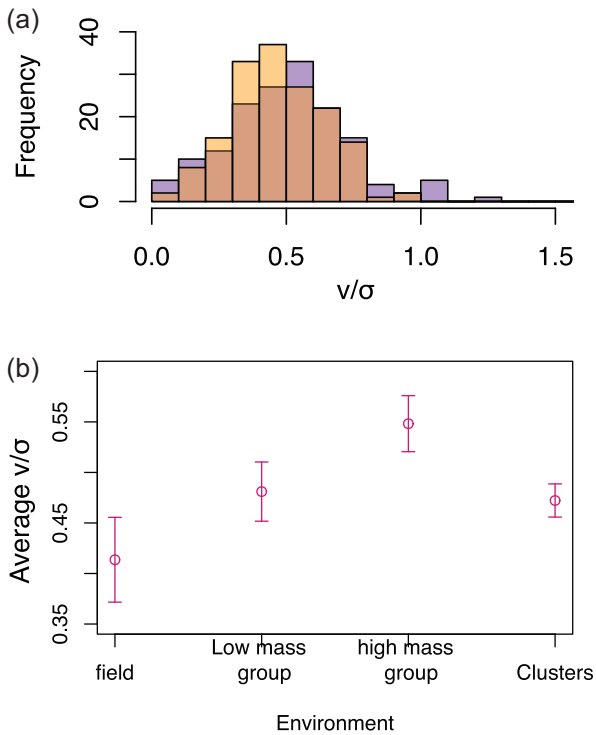


Figure 4. Distribution of v/σ values (a) for the GAMA (purple) and cluster (orange) regions, and the average stellar v/σ of S0s in the field, low mass groups (below $10^{13} M_{\odot}$), high mass groups (above $10^{13} M_{\odot}$), and the cluster regions (b).

As a comparison, Fig. 6(b) also illustrates the stellar v/σ versus ellipticity distribution of the elliptical population within GAMA. This demonstrates that the well-known separation of centrally slow and fast rotator ellipticals occurs outside the large range of rotational support seen amongst the S0s (Cappellari 2016).

4.3 Gas kinematics

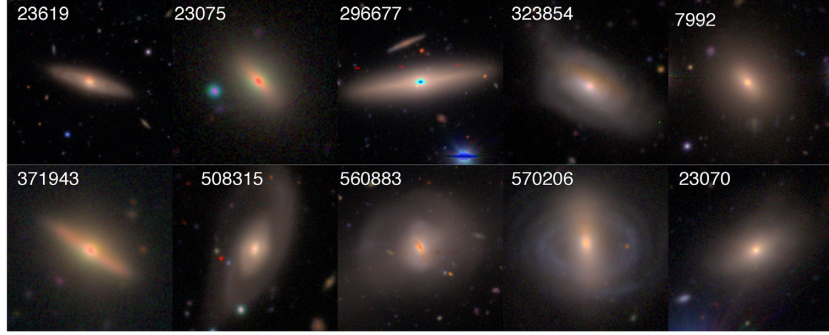
To gain further insight into the structure and history of the S0 sample, we next investigated the distribution of gas kinematics within the S0s and determine how these relate to the stellar component. Not all S0s in our sample have line emission strong enough to derive accurate gas

kinematics (see Table 1), as would be expected given the typically low gas contents of this class of galaxy. This is particularly true for the cluster regions, where both the larger redshifts and the generally lower gas contents of galaxies in cluster environments would result in more S0s falling below the emission detection threshold. The distribution of the $H\alpha$ flux weighted by the stellar flux for both the GAMA and cluster region is shown in Fig. 7. The distribution for S0s in the GAMA region (i.e. those in field and group environments) is broader with a tail towards higher $H\alpha$ flux, while the majority of cluster S0s contain very little detected gas emission. Because of this, we cannot derive accurate gas kinematics for many S0s in the cluster region.

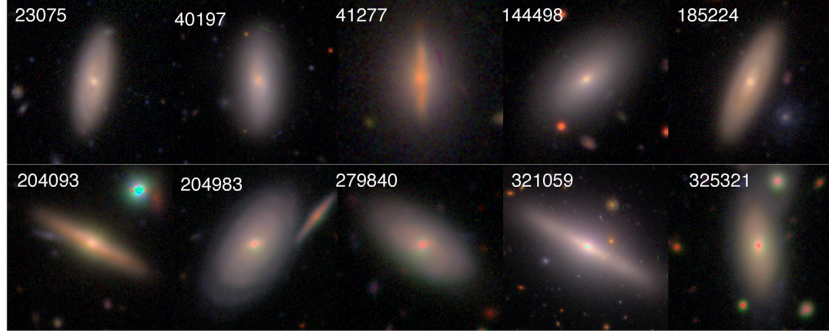
For S0 galaxies meeting the additional selection criteria for inclusion in the analysis of gas kinematics, Fig. 8 shows the distributions of the stellar and gas v/σ , as well as the difference in position angle (PA) between the stellar and gas components, again coloured by their stellar kinematics. S0s with unusual PAs were visually investigated to confirm that these differences are not due to poor kinematic maps; three examples are shown in Fig. 8(b). Most evident here is that the S0s with highly rotationally supported star kinematics also feature rotationally supported gas kinematics, as well as very small differences in the position angles of the two components. This indicates that the stellar and gas components in these galaxies are co-rotating in a common structure. S0s with v/σ values below 0.5, however, feature a large range of misalignments between the stellar and gas components. The six S0s with PAs between 50° and 150° have lower v/σ values relative to those near 0° or 180° ; such configurations are likely more stable in systems where the stellar component has a lower degree of angular momentum. Misalignments of S0 star and gas components in SAMI have already been noted (Bryant et al. 2019); here, we are demonstrating that this misalignment only occurs in S0s with low rotational support.

Fig. 9 shows typical examples of kinematic profiles for S0s in the pressure-supported S0s (top row) and rotationally supported S0s (bottom row). In the top row, the gas components are rotating significantly faster than the stellar components, while in the S0s from the rotationally supported group, the rotational velocities of the gas and stellar components are similar. This further suggests that the star and gas components in the rotationally supported S0s have evolved together, while the gas component in the pressure-supported group may have a separate origin to the stellar component. However, we note that S0s with low stellar v/σ may also be more likely to feature mis-aligned gas kinematics simply due to a larger bulge-to-disc ratio.

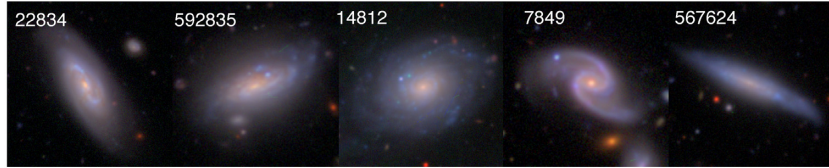
(a) Pressure-supported S0s



(b) Rotationally-supported S0s



(c) Spirals



(d) Ellipticals

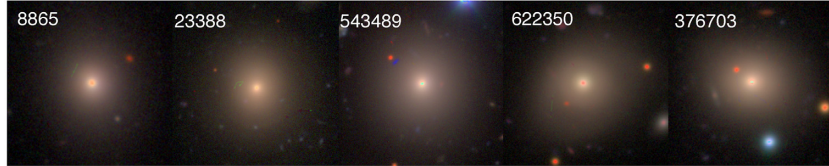


Figure 5. HSC imagery of S0 galaxies in the pressure-supported population ($v/\sigma < 0.5$, a) and rotationally supported population ($v/\sigma > 0.5$, b). Many pressure-supported S0s feature signs of disruption such as shells and tidal arms (e.g. 323854), while those in the rotationally supported group mostly feature smooth well-defined discs, some of which show signs of remnant spiral structures. For comparison, examples of HSC imagery of spirals and ellipticals are shown in (c) and (d), respectively. The SAMI catalogue ID number of each galaxy is shown in the top left-hand side of each image.

4.4 Age profiles

Finally, we examine whether there is any difference in the stellar age profiles of S0s at the extreme ends of the stellar v/σ distribution. Fig. 10 shows the age profiles of pressure-supported and rotationally supported S0s, along with the average profile for each. For this comparison, we use the limits $v/\sigma > 0.75$ for the rotationally supported group (blue) and $v/\sigma < 0.25$ for the pressure-supported group (red), resulting in 19 and 20 S0s, respectively.

The average age profiles have central ages consistent with each other within the uncertainties. The rotationally dominated S0s do show signs of a rapid drop in age towards the outer regions, suggesting that the more prominent disc structure in these galaxies

consists of younger stars. However, this difference relative to the pressure-supported S0s is not significant within this sample.

5 DISCUSSION

In this section, we firstly compare our findings with the previously known distinction between centrally slow- and fast-rotating early-type galaxies. We then discuss whether the range of properties seen in the S0 population are the result of different formation pathways. As described previously, the two main formation pathways proposed involve either the fading of spirals to S0s or disruptive minor merger events. The former is expected to lead to S0s which retain the disc structure and a significant amount of the rotational support of the

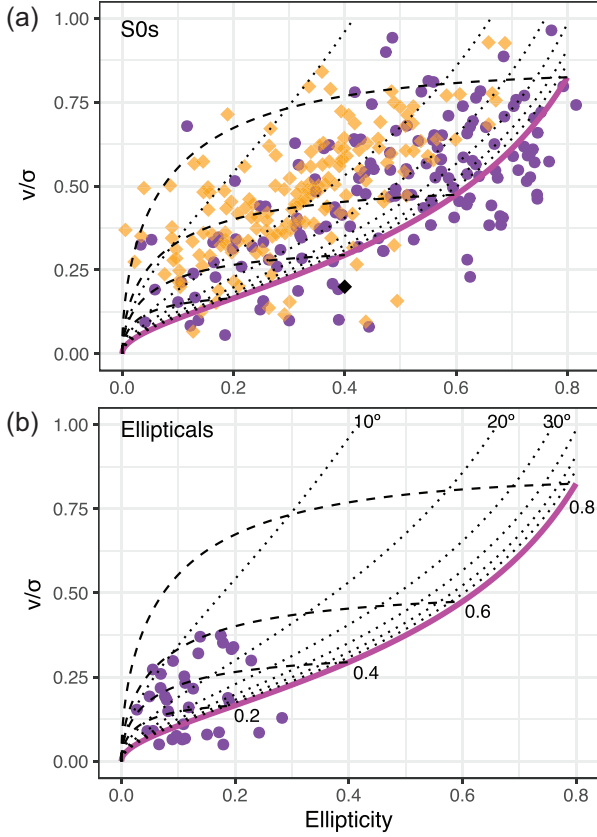


Figure 6. (a) v/σ versus ellipticity for S0s in the GAMA (purple circles) and cluster (orange diamonds) regions. The magenta line shows the expected values for an edge-on axisymmetric galaxy with anisotropy $\delta = 0.7\epsilon_{\text{intrinsic}}$. The dashed lines show this relation for different inclinations, while the dotted lines show positions of galaxies with equal intrinsic ellipticity (Cappellari et al. 2007); the respective values for each line drawn is displayed in (b). The black diamond shows the location of the Diaz et al. (2018) fiducial model. For comparison, (b) shows the elliptical population in the GAMA region, illustrating the previously identified slow and fast rotators in relation to the range of v/σ seen amongst the S0s.

former spiral, while the latter process would increase the degree of pressure support and shift the stellar population to a more centrally concentrated structure. While we observe a continuum rather than any clear bimodal separation in the stellar kinematics, variations in the specific physical parameters of each occurrence of an S0 formation process (e.g. different mass ratios and relative angular momentum in minor mergers) would lead to a range in values of the final degree of rotational support, blurring the separation between the two populations.

5.1 Relation to the slow- versus fast-rotator classification of early-type galaxies

A large amount of work has recently been done on the separation of early-type galaxies (ellipticals and S0s) into slow and fast rotators. Slow rotators are defined to be those galaxies which fall within the region below $\lambda_{\text{Re}} = 0.08 + e/4$ (Cappellari 2016). Recent work has suggested that slow and fast rotators may have different evolutionary pathways, with the slow rotators resulting from merger activity and the fast rotators following a more passive evolution (Penoyre et al. 2017). However, the majority of early-type galaxies which fall within

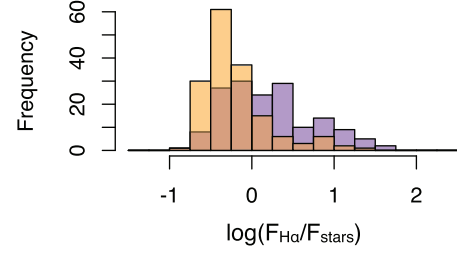


Figure 7. Distribution of the integrated H α flux to underlying continuum stellar flux ratio for S0s in the GAMA (purple) and cluster (orange) S0 regions. S0s in the clusters feature less gas emission than those in the rotationally supported group.

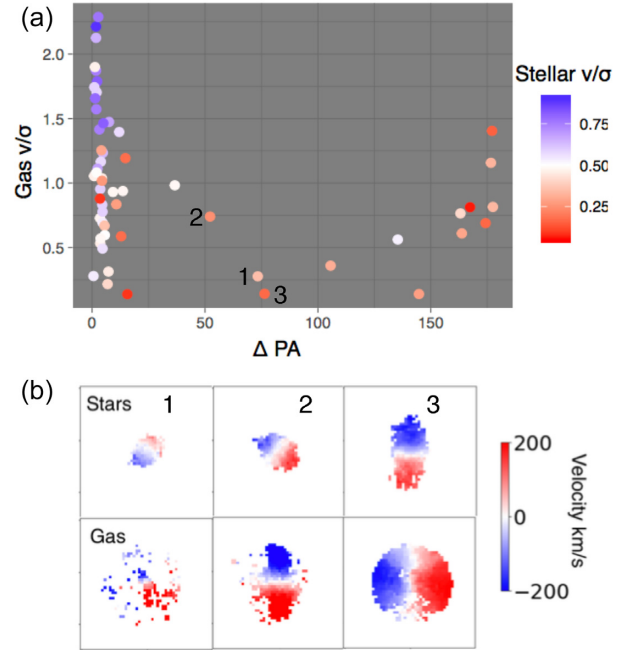


Figure 8. (a) Distribution of the stellar and gas v/σ as well as the degree of misalignment between the gas and stellar components in the S0 sample with gas kinematics available, again coloured by their v/σ values. S0s with high stellar v/σ values all have aligned gas components, while those with misaligned gas and stellar components feature v/σ values below 0.5. (b) Examples of gas and stellar kinematic maps for S0s with dPAs close to 90° , illustrating that the measured PA differences are not due to poor kinematic maps.

the slow-rotator class are ellipticals; e.g. in the work of Emsellem et al. (2007), while 10 out of 25 ellipticals are classed as slow rotators, only 2 out of 22 S0s are classed as slow rotators, while the remaining were classed as fast rotators. Here, we found the same behaviour for our S0 sample; only 12 out of 219 S0s lie within the slow-rotator region. This highlights that the spread in kinematics of S0s that we find here lies in a different region of the ellipticity versus λ_{Re} parameter space. Therefore, we conclude that the spread in v/σ that we observe is not caused by subpopulations corresponding to the slow and fast rotators, but is caused by a range of processes intrinsic within the S0 class. However, it should be noted that kinematics at larger radii considered here can differ from the kinematics derived from smaller radii, as demonstrated in Foster et al. (2016).

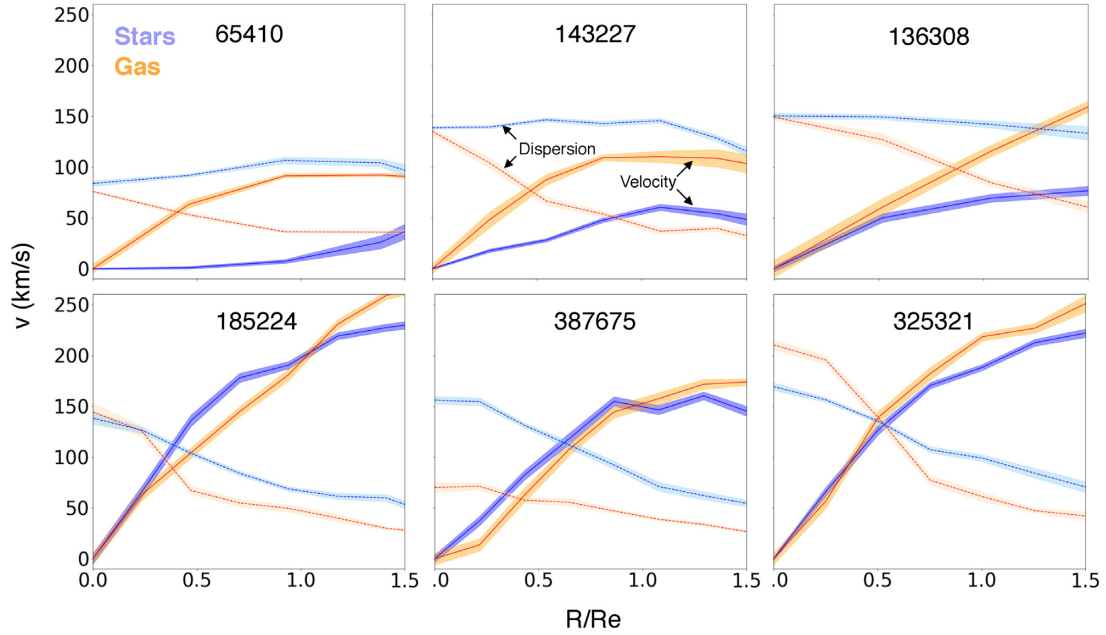


Figure 9. Stellar (blue) and gas (orange) kinematic profiles for S0s with v/σ below 0.5 (top row) and above 0.5 (bottom row). Solid lines are the velocities and dotted lines are the velocity dispersions. The pressure-dominated S0s feature gas rotation velocities significantly higher (at least two times faster at 1.5 R_e) than the stellar components, while the rotation-dominated S0s feature gas velocities in line with their stellar components.

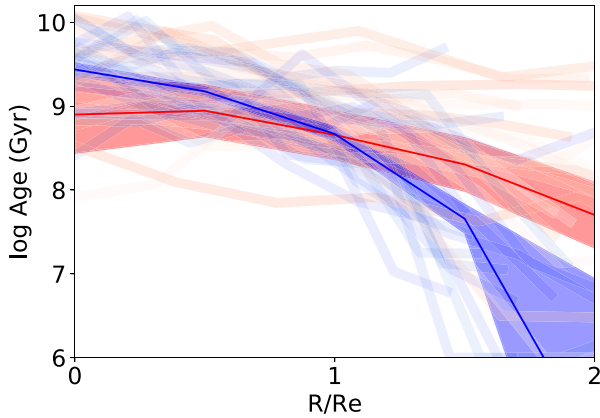


Figure 10. Stellar age profiles of pressure and rotationally supported S0 galaxies in the GAMA region. The faint lines are the profiles of individual S0s with $v/\sigma > 0.75$ (blue) or < 0.25 (red), while the solid line and shading are the average profile and its uncertainty, respectively. Age estimates were not reliable at larger radii for some S0s, indicated by the truncated lines of some of the individual profiles. While the profiles are largely consistent, the rotational S0s show signs of a rapid age drop towards the outer regions of the galaxy.

5.2 Origin of pressure-supported S0s

The more pressure-supported population of S0s (those with v/σ less than 0.5) feature a pressure-supported stellar component, high Sérsic indices, lower ellipticities, and are more prominent in lower density environments. Many of these S0s show signs of disruption in their optical imagery, such as shells and tidal streams. Their gas content is lower than that of the S0s with a higher degree of rotational support and the position angle of the gas rotation relative to the stellar component covers a large range from aligned to anti-aligned, suggesting that the gas component has a different origin to the stellar

component. This is in contrast to spiral galaxies, for which the vast majority feature aligned gas and stellar components (Bryant et al. 2019).

S0s forming via minor mergers or tidal interactions are expected to feature a higher degree of pressure support (Rizzo et al. 2018), consistent with what is seen in these S0s. Comparing the pressure-supported S0s with spiral galaxies in the SAMI survey (Fig. 11) shows that the pressure-supported S0s feature higher Sérsic indices and higher stellar masses than the SAMI spiral population. If they descended directly from spirals, their progenitors would have been a subpopulation of spirals with high masses and a dominating bulge. However, their v/σ values are lower than spirals of similar mass, making them difficult to explain with a passive faded-spiral pathway.

All these features could indicate that these S0s have formed via a disruptive process such as a minor merger or tidal interaction, rather than via the fading spiral pathway. However, it cannot be ruled out that these are older systems which have experienced a greater amount of harassment, ram pressure stripping, or significant disruption since their initial formation.

Alternatively, as seen in Cortese et al. (2019), passive galaxies may also feature lower v/σ values due to a slow-down in angular momentum build-up once they enter a denser environment. S0s with lower v/σ values seen in the larger group environments may therefore also reflect a passive evolution rather than a merger event. Comparisons with cosmological simulations may help to determine whether an altered passive evolution or a more disruptive merger event is resulting in S0s with a greater degree of pressure support in these environments.

5.3 Are pressure-supported S0s consistent with a cE + disc origin?

The comparison of our observational results to the fiducial model in Diaz et al. (2018) are consistent with the claim that at least some S0s may have resulted from the cE + disc merger pathway. The Diaz

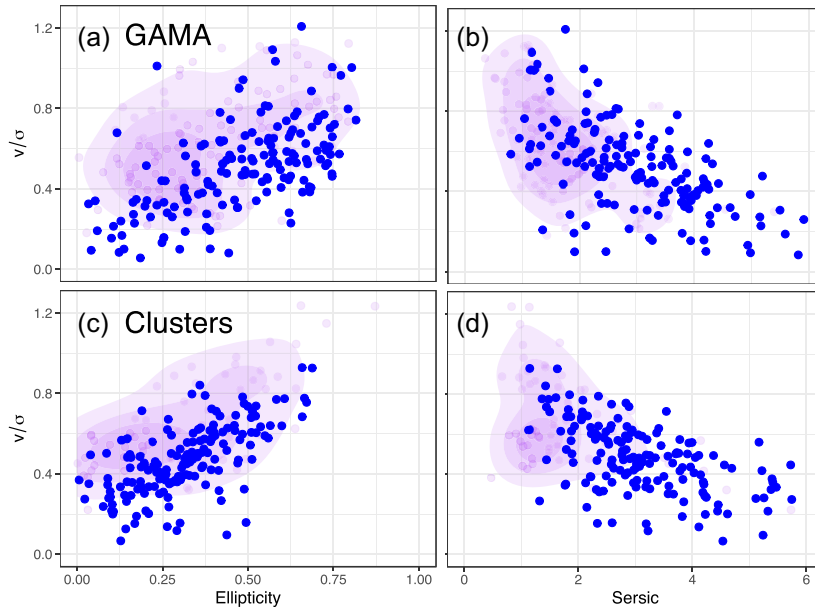


Figure 11. Comparison between the S0 population in this study and a mass-matched sample of spiral galaxies (purple points and contours) in the v/σ versus ellipticity (a,c) and Sérsic index (b,d) in the GAMA region (top row) and cluster regions (bottom row). The more rotationally supported S0s are located within the same parameter-space regions as the spiral population, while the pressure-supported S0s with higher Sérsic indices lie outside the regions of the spiral population.

et al. (2018) simulations predicted that the cE + disc merger would lead to an S0 with low stellar v/σ , a faster-rotating gas component and a negative age gradient. The final S0 in the fiducial model has a mass of around $10^{10.5} M_{\odot}$.

Its degree of rotational support lies among the pressure-supported S0s; the position of the model S0 on the ellipticity versus v/σ diagram is shown as the black diamond in Fig. 6. Fig. 3 also displays the locations of the fiducial model within the Sérsic versus ellipticity, Sérsic versus galaxy mass, and effective radius versus stellar mass planes relative to the observed S0 distributions. An example of an S0 galaxy lying near this point in ellipticity versus v/σ space is shown in Fig. 12. Consistent with the fiducial model, the stellar v/σ remains below 0.5 out to 1.5 effective radii, while the gas component rotates significantly faster.

The kinematic predictions presented in Diaz et al. (2018) corresponded to only a single scenario. It is certainly possible that a range of masses and properties of the cE and the disc galaxy, along with their relative motions, would lead to S0s with a range of masses and kinematic properties. For example, a more massive disc with a faster relative velocity may lead to a more rotationally supported S0 with a relatively larger disc component and higher v/σ values. Therefore, the fraction of the S0 population consistent with the model could be significantly higher than what can be determined at this stage.

5.4 Origins of the rotationally supported ($v/\sigma > 0.5$) S0s

The more rotationally supported S0 galaxies are located more frequently in higher density groups. The majority of these S0s feature smooth, well-defined discs, some of which show hints of remnant spiral features. The gas in these S0s is also co-rotating with the stellar component in the majority of cases, which suggests that the gas has co-evolved with the stellar component.

A spiral galaxy which fades to an S0 would be expected to maintain a constant mass, since no significant amount of new mass enters

the galaxy through a merger (Rizzo et al. 2018). In addition, the lack of any significant disruptions would leave the concentration of the stellar component similar to the original spiral, and the galaxy would be expected to maintain its degree of rotational support. We would therefore expect a faded spiral to have similar mass, v/σ and Sérsic indices to spiral galaxies. Comparing the rotationally supported S0s to the mass-matched sample of spiral galaxies (Fig. 11) shows that in both the GAMA and cluster regions, these S0s feature similar concentrations and kinematics to the spiral population, which lends support to the idea that these S0s form via the faded spiral pathway. The shift to higher Sérsic and lower v/σ values from the GAMA to the cluster regions evident in Fig. 11 is likely a reflection of the morphology–density relation, where the higher-density cluster environment contains a higher proportion of bulge-dominated systems.

The mass distribution of the full SAMI spiral population ranges from 10^8 to $10^{11} M_{\odot}$; the lack of rotationally supported S0s with lower masses may indicate that only high-mass spirals undergo this process. In addition, barring any major subsequent inflow of gas, S0s originating from faded spirals would retain the co-rotation of the stellar and gas component seen in spiral galaxies, which is what we also observe in the rotationally supported S0 population.

5.5 Environment

Due to the higher relative velocities between galaxies in higher mass groups and clusters, the occurrence of mergers and slow gravitational interactions is expected to be less than that in lower density environments (Barnes & Hernquist 1992). Meanwhile, the increased density of the intra-cluster medium in higher-mass systems may lead to the increased occurrence of fading pathways such as ram pressure stripping. The increase in v/σ observed in higher mass groups (see Fig. 4) could therefore reflect a decreasing occurrence

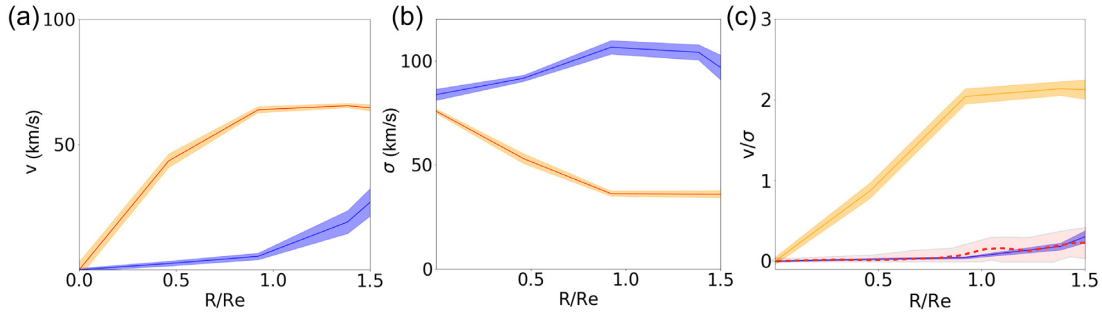


Figure 12. Example of an S0 galaxy with kinematics similar to the Diaz et al. (2018) model. The prediction of the stellar v/σ profile from Diaz et al. is overlaid on (c) as a red dashed line and shaded region denoting the standard deviation. (a) shows the rotational velocity of the stellar (blue) and gas (orange) component. Shaded regions delimit one standard error. The gas component is rotating significantly faster than the stellar component, as expected if the gas is located in a tight disc. (b) shows the velocity dispersion profiles, and (c) shows the v/σ profile, with the Diaz et al. (2018) fiducial model overlaid (red line and shaded region). The standard error of the mean values in each radial bin is indicated by the shaded regions.

of the merger formation pathway and an increase in the prevalence of the fading-spiral transformation pathway.

Interestingly, the decrease in the average v/σ seen in the cluster regions goes against the trend seen in the groups (Fig. 4). This decrease could be the result of S0s which have formed within small groups merging into the clusters. Indeed, Just et al. (2010) showed that S0 formation is occurring more prominently in low-mass groups, and that the relative numbers of S0s seen in clusters can be explained by the subsequent merging of these low-mass groups into the clusters. Alternatively, additional harassment in the cluster environment, such as multiple flybys of other cluster members, may lead to further heating of the disc. Future work will look at the morphology–density relation of S0s within clusters, in particular, their stellar v/σ as a function of radius.

6 SUMMARY AND CONCLUSION

The aims of this work were to first investigate whether there is evidence for subpopulations of S0s with different formation pathways and secondly, to test the cE + disc formation pathway proposed in Diaz et al. (2018). To achieve this, we used the SAMI galaxy survey which contains resolved kinematic data on a large sample of S0s across the full range of environments in which they are found.

We found a wide range of rotational support, illustrated by the range of stellar v/σ within 1.5 effective radii. The variation seen in v/σ corresponds to accompanying changes in other structural parameters, with more rotationally supported S0s featuring higher ellipticities, lower spiral-like Sérsic indices and larger effective radii. This indicates that more rotationally supported S0s feature a more spiral-like structure with a prominent disc, while the more pressure-supported S0s feature a more compact spherical structure.

The more pressure-supported (stellar $v/\sigma < 0.5$) S0s dominate in low-density environments, while the more rotationally supported S0s become more prominent in higher density environments. Optical images of S0s at each end of the v/σ range revealed that while both rotationally and pressure supported S0s include those with a bulge and a smooth, well-defined disc, a significant fraction of S0s with $v/\sigma > 0.5$ show signs of merger or gravitational interactions such as shells and tidal features.

Comparisons with the Diaz et al. (2018) fiducial S0 show that the cE + disc formation model is consistent with S0s in the more pressure-supported regime and is therefore a viable S0 formation mechanism. Further simulations exploring a wider range of initial

conditions are needed in order to determine what fraction of the S0 population could be explained by this model.

For S0s which also have gas kinematics, we found that all S0s with $v/\sigma > 0.5$ featured co-rotating stellar and gas components while many S0s with $v/\sigma < 0.5$ feature a mis-aligned gas component, suggesting that the gas in these galaxies may have an external origin. Finally, age profiles show that the pressure-supported S0s have, an average, slightly flatter age profiles relative to the rotationally supported group, however, the two populations are consistent within uncertainties.

Our observations have identified a wide range of rotational support among S0 galaxies. The corresponding changes in other physical parameters suggest that the rotationally supported S0s formed by the fading of spiral galaxies, while more complex formation pathways (e.g. mergers, interactions) are likely needed to explain the pressure-supported S0s, which are preferentially observed in the field and low-mass group haloes.

ACKNOWLEDGEMENTS

The SAMI Galaxy Survey is based on observations made at the Anglo-Australian Telescope. The SAMI was developed jointly by the University of Sydney and the Australian Astronomical Observatory. The SAMI input catalogue is based on data taken from the Sloan Digital Sky Survey, the GAMA Survey, and the VST ATLAS Survey. The SAMI Galaxy Survey is supported by the Australian Research Council, Centre of Excellence for All Sky Astrophysics in Three Dimensions (ASTRO 3D) through project number CE170100013, the Australian Research Council, Centre of Excellence for All-sky Astrophysics (CAASTRO) through project number CE110001020, and other participating institutions. The SAMI Galaxy Survey website is <http://sami-survey.org/>.

GAMA is a joint European-Australasian project based around a spectroscopic campaign using the Anglo-Australian Telescope. The GAMA input catalogue is based on data taken from the Sloan Digital Sky Survey and the UKIRT Infrared Deep Sky Survey. Complementary imaging of the GAMA regions is being obtained by a number of independent survey programmes including GALEX MIS, VST KiDS, VISTA VIKING, WISE, Herschel ATLAS, GMRT, and ASKAP providing ultraviolet to radio coverage. GAMA is funded by the STFC (UK), the ARC (Australia), the AAO, and the participating institutions. The GAMA website is <http://www.gama-survey.org/>

This work was supported through the Australian Research Council’s Discovery Projects funding scheme (DP170102344). Support

for AMM is provided by NASA through Hubble Fellowship grant #HST-HF2-51377 awarded by the Space Telescope Science Institute, which is operated by the Association of Universities for Research in Astronomy, Inc. for NASA under contract NAS5-26555. JJB acknowledges support of an Australian Research Council Future Fellowship (FT180100231). JvdS is funded through a ARC Laureate Fellowship program (FL140100278).

DATA AVAILABILITY

The data underlying this article were accessed from SAMI Data Release 2 (Scott et al. 2018), available at <https://datacentral.org.au>. The derived data generated in this research will be shared on reasonable request to the corresponding author.

REFERENCES

- Aihara H. et al., 2018, *PASJ*, 70, S8
 Allen J. T. et al., 2015, *MNRAS*, 446, 1567
 Barnes J. E., Hernquist L., 1992, *ARA&A*, 30, 705
 Bekki K., 1998, *ApJ*, 502, L133
 Bekki K., Couch W. J., 2011, *MNRAS*, 415, 1783
 Bekki K., Couch W. J., Shioya Y., 2002, *ApJ*, 577, 651
 Bland-Hawthorn J. et al., 2011, *Opt. Express*, 19, 2649
 Bruzual G., Charlot S., 2003, *MNRAS*, 344, 1000
 Bryant J. J. et al., 2014, *MNRAS*, 438, 869
 Bryant J. J. et al., 2015, *MNRAS*, 447, 2857
 Bryant J. J. et al., 2019, *MNRAS*, 483, 458
 Cappellari M., 2016, *ARA&A*, 54, 597
 Cappellari M., Emsellem E., 2004, *PASP*, 116, 138
 Cappellari M. et al., 2007, *MNRAS*, 379, 418
 Cid Fernandes R. et al., 2005, *MNRAS*, 358, 363
 Coccato L. et al., 2020, *MNRAS*, 492, 2955
 Cortese L. et al., 2016, *MNRAS*, 463, 170
 Cortese L. et al., 2019, *MNRAS*, 485, 2656
 Croom S. M. et al., 2012, *MNRAS*, 421, 872
 Diaz J. et al., 2018, *MNRAS*, 477, 2030
 Dressler A., 1980, *ApJ*, 236, 351
 Dressler A. et al., 1997, *ApJ*, 490, 577
 Driver S. P. et al., 2011, *MNRAS*, 413, 971
 Ebeling H. et al., 2014, *ApJ*, 781, L40
 Emsellem E. et al., 2007, *MNRAS*, 379, 401
 Foster C. et al., 2016, *MNRAS*, 457, 147
 Freeman K. C., 1970, *ApJ*, 160, 811
 Green A. W. et al., 2018, *MNRAS*, 475, 716
 Gunn J. E., Gott J. R., III, 1972, *ApJ*, 176, 1
 Ho I.-T. et al., 2016, *Ap&SS*, 361, 280
 Hubble E. P., 1926, *ApJ*, 64, 321
 Ilyina M. A., Sil'chenko O. K., Afanasiev V. L., 2014, *MNRAS*, 439, 334
 Jaffé Y. L. et al., 2014, *MNRAS*, 440, 3491
 Johnston E. J. et al., 2014, *MNRAS*, 441, 333
 Just D. W. et al., 2010, *ApJ*, 711, 192
 Katkov I. Y., Sil'chenko O. K., Afanasiev V. L., 2014, *MNRAS*, 438, 2798
 Larson R. B. et al., 1980, *ApJ*, 237, 692
 Owers M. S. et al., 2012, *ApJ*, 750, L23
 Owers M. S. et al., 2017, *MNRAS*, 468, 1824
 Owers M. S. et al., 2019, *ApJ*, 873, 52
 Pak M. et al., 2019, *ApJ*, 880, 149
 Peng C. Y. et al., 2010, *AJ*, 139, 2097
 Penoyre Z., Moster B. P., Sijacki D., Genel S., 2017, *MNRAS*, 468, 3883
 Poggianti B. M. et al., 2009, *ApJ*, 697, L137
 Quilis V., Moore B., Bower R., 2000, *Sci*, 288, 1617
 Rizzo F., Fraternali F., Iorio G., 2018, *MNRAS*, 476, 2137
 Robotham A. S. G. et al., 2011, *MNRAS*, 416, 2640
 Robotham A. S. G. et al., 2017, *MNRAS*, 466, 1513
 Sánchez S. F. et al., 2012, *A&A*, 538, A8
 Sandage A., Visvanathan N., 1978, *ApJ*, 225, 742
 Scott N. et al., 2018, *MNRAS*, 481, 2299
 Sharp R. et al., 2006, in McLean I. S., Iye M., eds, *Proc. SPIE Conf. Ser.* Vol. 6269, *Ground-Based and Airborne Instrumentation for Astronomy*. SPIE, Bellingham, p. 13
 Sharp R. et al., 2015, *MNRAS*, 446, 1551
 Tabor M. et al., 2017, *MNRAS*, 466, 2024
 Tapia T. et al., 2017, *A&A*, 604, A105
 Temi P., Brighenti F., Mathews W. G., 2009, *ApJ*, 695, 1
 Tully R. B., Pierce M. J., 2000, *ApJ*, 533, 744
 van de Sande J. et al., 2017, *ApJ*, 835, 104
 van de Sande J. et al., 2018, *Nature Astron.*, 2, 483

This paper has been typeset from a \LaTeX file prepared by the author.