

Host galaxy properties of changing-look AGNs revealed in the MaNGA survey

Xiaoling Yu^{1,2}, Yong Shi^{1,2,★}, Yanmei Chen,^{1,2} Jianhang Chen,^{1,2} Songlin Li^{1,2}, Longji Bing^{1,2}, Junqiang Ge,³ Rogemar A. Riffel^{4,5} and Rogério Riffel^{5,6}

¹*School of Astronomy and Space Science, Nanjing University, Nanjing 210093, China*

²*Key Laboratory of Modern Astronomy and Astrophysics, Nanjing University, Ministry of Education, Nanjing 210093, China*

³*Chinese Academy of Sciences, National Astronomical Observatories of China, 20A Datun Road, Chaoyang District, Beijing 100012, China*

⁴*Departamento de Física, CCNE, Universidade Federal de Santa Maria, Santa Maria, RS 97105-900, Brazil*

⁵*Laboratório Interinstitucional de e-Astronomia – LIneA, Rua Gal. José Cristino 77, Rio de Janeiro, RJ 20921-400, Brazil*

⁶*Instituto de Física, Universidade Federal do Rio Grande do Sul, Campus do Vale, Porto Alegre, RS 91501-970, Brazil*

Accepted 2020 August 25. Received 2020 July 25; in original form 2020 January 15

ABSTRACT

Changing-look active galactic nuclei (CL-AGNs) are a subset of AGNs in which the broad Balmer emission lines appear or disappear within a few years. We use the Mapping Nearby Galaxies at Apache Point Observatory (MaNGA) survey to identify five CL-AGNs. The 2D photometric and kinematic maps reveal common features as well as some unusual properties of CL-AGN hosts as compared to the AGN hosts in general. All MaNGA CL-AGNs reside in the star-forming main sequence, similar to MaNGA non-changing-look AGNs (NCL-AGNs). The 80 ± 16 per cent of our CL-AGNs do possess pseudo-bulge features, and follow the overall NCL-AGN $M_{\text{BH}}-\sigma_*$ relationship. The kinematic measurements indicate that they have similar distributions in the plane of angular momentum versus galaxy ellipticity. MaNGA CL-AGNs, however, show a higher, but not statistically significant (20 ± 16 per cent) fraction of counter-rotating features compared to that (1.84 ± 0.61 per cent) in general star formation population. In addition, MaNGA CL-AGNs favour more face-on (axial ratio > 0.7) than that of type I NCL-AGNs. These results suggest that host galaxies could play a role in the CL-AGN phenomenon.

Key words: galaxies: active – galaxies: evolution – galaxies: kinematics and dynamics – galaxies: nuclei – galaxies: Seyfert.

1 INTRODUCTION

Active galactic nuclei (AGNs) are empirically classified as type 1 and type 2 according to their emission line features. Type 1 AGNs possess both broad and narrow emission lines, while only narrow emission lines are seen in type 2 AGNs. The unification model (Antonucci 1993; Urry & Padovani 1995; Netzer 2015) states that type 1 AGNs are viewed face-on so that broad-emission line regions (BLRs) are seen directly, while type 2 AGNs are viewed edge-on with their BLRs blocked by the dusty torus. Despite the success of the unification model, there are proposals that some type 2 AGNs may lack intrinsic broad lines because of their low accretion rate (Shi et al. 2010; Pons & Watson 2014).

It has been known for decades that some AGNs have changed from type 1 to type 2 or vice versa (Khachikian & Weedman 1971; Penston & Perez 1984). This type of AGNs, called changing-look AGNs (CL-AGNs), experiences the appearance or disappearance of broad Balmer emission lines over a time-scale of a few years. The number of such AGNs has increased rapidly in the past few years due to large-area spectroscopic surveys (e.g. Denney et al. 2014; LaMassa et al. 2015; MacLeod et al. 2016; Parker et al. 2016; Ruan et al. 2016; Runnøe et al. 2016; Yang et al. 2018; MacLeod et al.

2019). Some CL-AGNs have been observed to change types more than once: Mrk 1018 changed from type 1.9 to type 1 and later returned back to type 1.9 (Cohen et al. 1986; McElroy et al. 2016), and Mrk 590 has changed from type 1.5 to type 1 and then to type 1.9, as seen from monitoring over a period of more than 40 yr (Denney et al. 2014). Some objects display rapid state change; e.g. it requires just a few months for IES 1927+654 to transform from type 2 to type 1 (Trakhtenbrot et al. 2019). The physical mechanisms of CL-AGNs are still not well understood. Proposed mechanisms include the following: (1) variable obscuration where the BLR is obscured by crossing clouds (e.g. Goodrich 1989; Elitzur 2012); (2) variable accretion rates where AGNs follow sequence from type 1 to type 2 or vice versa (e.g. Elitzur, Ho & Trump 2014); and (3) tidal disruption events where a star disrupted by the supermassive black hole (SMBH) results in AGN type change (Merloni et al. 2015).

In recent decades, more and more works reveal some links between small-scale SMBH accretion activities and large-scale host galaxy properties. Dunlop et al. (2003) studied morphologies of AGN hosts, and pointed out that the hosts of both radio-loud and radio-quiet AGNs are virtually all massive ellipticals. Jahnke et al. (2004) found that the UV colours of all host galaxies are substantially bluer than those expected from an old population of stars with formation redshift less than 5. Researchers also studied the interstellar medium of host galaxies (e.g. Xia et al. 2012; Petric et al. 2015). They found that there is a correlation between the AGN-associated bolometric luminosities

* E-mail: yong@nju.edu.cn

and the CO line luminosities, suggesting that star formation and AGNs draw from the same reservoir of gas. Studies also investigate the star formation behaviour of the host galaxies (e.g. Shi et al. 2007, 2014; Xu et al. 2015), and pointed out that far-infrared emission of AGNs can be dominated by either star formation or nuclear emission. These studies imply that the host galaxy properties are the key point to understanding the environment where the black hole grows, and provide more insights into the circumstances influencing co-evolution (e.g. Zhang et al. 2016).

There is a tight correlation between the black hole mass (M_{BH}) and stellar velocity dispersion of the bulge component (σ_*) for nearby galaxies (e.g. Gültekin et al. 2009; Xiao et al. 2011; Kormendy & Ho 2013). This relation suggests a strong connection between AGNs and their host galaxies. CL-AGNs offer a unique opportunity to study this relationship. Gezari et al. (2017) estimated the M_{BH} of one CL-AGN through the broad Balmer emission lines when the quasar transformed to type 1. They reported that the M_{BH} is in good agreement with the estimate through the $M_{\text{BH}}-\sigma_*$ relation. The ‘turning-off’ CL-AGNs provide excellent cases to investigate the host galaxy properties, as the contamination from nuclear radiation is greatly reduced (e.g. LaMassa et al. 2015; Yang et al. 2018; Charlton et al. 2019; Ruan et al. 2019). Raimundo et al. (2019) used optical and near-infrared integral field unit (IFU) spectroscopy to study the host galaxy properties of Mrk 590, a CL-AGN that has been subject of a 40-yr multiwavelength monitoring campaign. This is the first IFU study of the host galaxy and central AGN properties. They found that the ionized gas has a complex shape and a complex relationship between gas inflow and outflow in the nucleus of Mrk 590.

In this work, we attempt to expand the optical IFU studies of CL-AGN by using the MaNGA survey. Section 2 describes the MaNGA survey and the sample selection criteria. Section 3 presents data analysis and results. We summarize our main conclusions in Section 4. We adopt the cosmological parameters $H_0 = 70 \text{ km s}^{-1} \text{ Mpc}^{-1}$, $\Omega_m = 0.3$, and $\Omega_\Lambda = 0.7$ throughout this paper.

2 DATA

2.1 The MaNGA survey

The MaNGA survey (Bundy et al. 2015) is an integral field spectroscopic programme, which is one of three core programmes in the fourth generation of the Sloan Digital Sky Survey (SDSS-IV) (Blanton et al. 2017). This survey is operational from 2014 July 1 to 2020 June 30. The aim is targeting about 10 000 nearby galaxies within a redshift range of 0.01–0.15 (Drory et al. 2015; Law et al. 2015; Yan et al. 2016a; Wake et al. 2017), which are observed by the 2.5-m Sloan Foundation Telescope (Gunn et al. 2006). The wavelength coverage is from 3600 to 10 300 Å with the spectral resolution of $R \sim 2000$ (Smee et al. 2013). Two-thirds of the targets will be covered out to 1.5 effective radii (R_e), and the remaining one-third out to 2.5 R_e (Yan et al. 2016b; Wake et al. 2017). MaNGA employs dithered observations that contain 17 hexagonal bundles, which offers five different spatial coverages from a diameter of 12 arcsec for a 19-fibre bundle to a diameter of 32 arcsec for a 127-fibre bundle (Law et al. 2015). The raw data are processed by MaNGA Data Reduction Pipeline, which is described in Law et al. (2016). Our sample is from MaNGA Product Launch-6 (MPL-6).

2.2 Sample selection

We first cross-matched 4962 MPL-6 MaNGA sources with the SDSS Data Release 7 (DR7; Abazajian et al. 2009) galaxy catalogue from

MPA-JHU,¹ which produced 4320 matches. We use the spectra of the central one spaxel of MaNGA and the single fibre of SDSS-DR7 to select AGNs in two data bases (Fig. 1 shows the spectra of five examples) with the following criteria:

(1) $H\alpha$ rest equivalent width is larger than 3 Å, which rejects galaxies with weak emission lines powered by evolved stars (e.g. Stasińska et al. 2008; Yan & Blanton 2012; Belfiore et al. 2016; Bing et al. 2019).

(2) The signal-to-noise ratio (S/N) for the emission lines of [N II] $\lambda 6583$, $H\alpha$, [O III] $\lambda 5007$, and $H\beta$ is better than 3.0. The emission lines have been measured by Data Analysis Pipeline (DAP) for MaNGA sources (Westfall et al. 2019).

(3) The line ratio is located in the AGN region according to the BPT diagram, i.e. [N II] $\lambda 6583/H\alpha$ versus [O III] $\lambda 5007/H\beta$ (Baldwin, Phillips & Terlevich 1981; Kewley et al. 2001, 2006; Kauffmann et al. 2003). Fig. 2 shows some examples of BPT diagrams for objects in our sample.

Before further analysis, both the spectra of DR7 and MaNGA have been corrected for the galactic reddening using the reddening law of O’Donnell (1994). DR7 provides the spectrum of central 3 arcsec for each galaxy, so we stack the MaNGA spectrum of central 3 arcsec for further analysis. The above criteria yield 195 AGNs in MaNGA, and all of them have been observed by SDSS-DR7. Among 4320 SDSS-DR7 sources that have MaNGA follow-ups, there are 711 galaxies classified as AGNs in the catalogue of the SDSS-DR7 data base, but only 188 AGNs meet the above three selection criteria. In total, we have 231 objects that have two-epoch observations and are classified as AGN during at least one epoch. For these two-epoch spectra (MaNGA and DR7), we normalized the spectra at 5400–5800 Å. Then we compared the line width of the normalized spectra of these two epochs by eye. If the line width of $H\alpha$ or $H\beta$ has significant variations, then we further measure the line width and determine the exact variations. To determine the line width, we used PPXF package (Cappellari & Emsellem 2004; Cappellari 2017) to measure the stellar continuum using MILES Library of Stellar Spectra (Sánchez-Blázquez et al. 2006; Falcón-Barroso et al. 2011) and then subtracting a stellar component from each spectrum. After subtracting the stellar component from each spectrum, we fit the emission lines with a single Gaussian component. If this model matched the line profile, and the full width at half-maximum (FWHM) was smaller than 500 km s^{-1} , the feature was classified as a narrow line. If the single Gaussian failed to produce a reasonable match, additional Gaussian was included in the fit. If the multicomponent model fits the profile, and one of the components had an FWHM larger than 2000 km s^{-1} and the peak S/N per spectroscopic pixel exceeded 3.0, the line was classified as broad. If an object had a given line change from ‘broad’ to ‘narrow’ (or the reverse), the source was classified as a CL-AGN.

This process identified five CL-AGNs. The CL-AGN fraction is about 0.11 per cent (5 out of 4320 galaxies), which is much higher than the finding (0.007 per cent) of Yang et al. (2018) probably because we focus on nearby objects with a high S/N. We also used other line ratio diagnostics ([S II], [O I]) to check these five sources. For the [S II] line ratio diagnostics, two galaxies are not in the AGN region (8322–3701 and 9048–1902). For the [O I] line ratio diagnostics, one galaxy is not in the AGN region (9048–1902). Before further analysis, we used the package of PYQSOFIT (Guo, Shen & Wang 2018) to decompose the AGN components (e.g. power-law

¹<https://www.mpa.mpg.de/SDSS/DR7/>

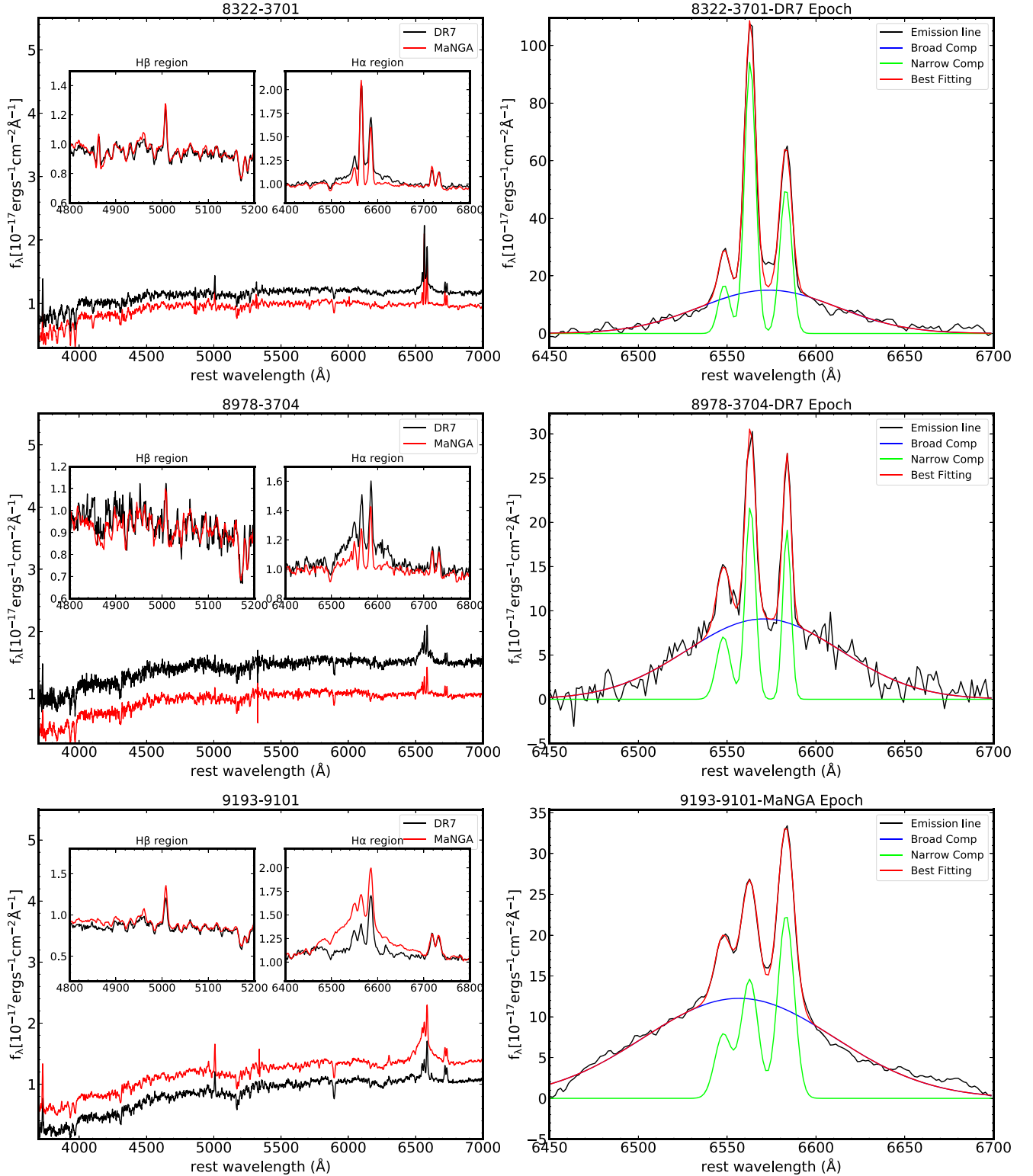


Figure 1. *Left:* Final selected sample of five CL-AGN spectra before subtracting the stellar component within different observation epochs. The black lines indicate the DR7 epoch. The red spectra are the MaNGA data produced by combining the central 3 arcsec spectra. The green lines are the latest P200 spectra. The two insets in each panel show the H β and H α emission regions. From the DR7 epoch to MaNGA (or P200) epoch, the broad Balmer emission lines disappeared between two objects (‘turned off’); for the remaining three sources, the broad Balmer emission appeared (‘turned on’). *Right:* After subtracting the stellar component, we used two components (broad component and narrow component) to fit the broad H α or H β emission lines. For each panel, the title shows the observational epoch. The black lines represent the broad emission lines after subtracting the stellar component. The blue lines and the green lines represent the broad component and the narrow component for the best fit, respectively. The red lines represent the total of the broad and narrow components.

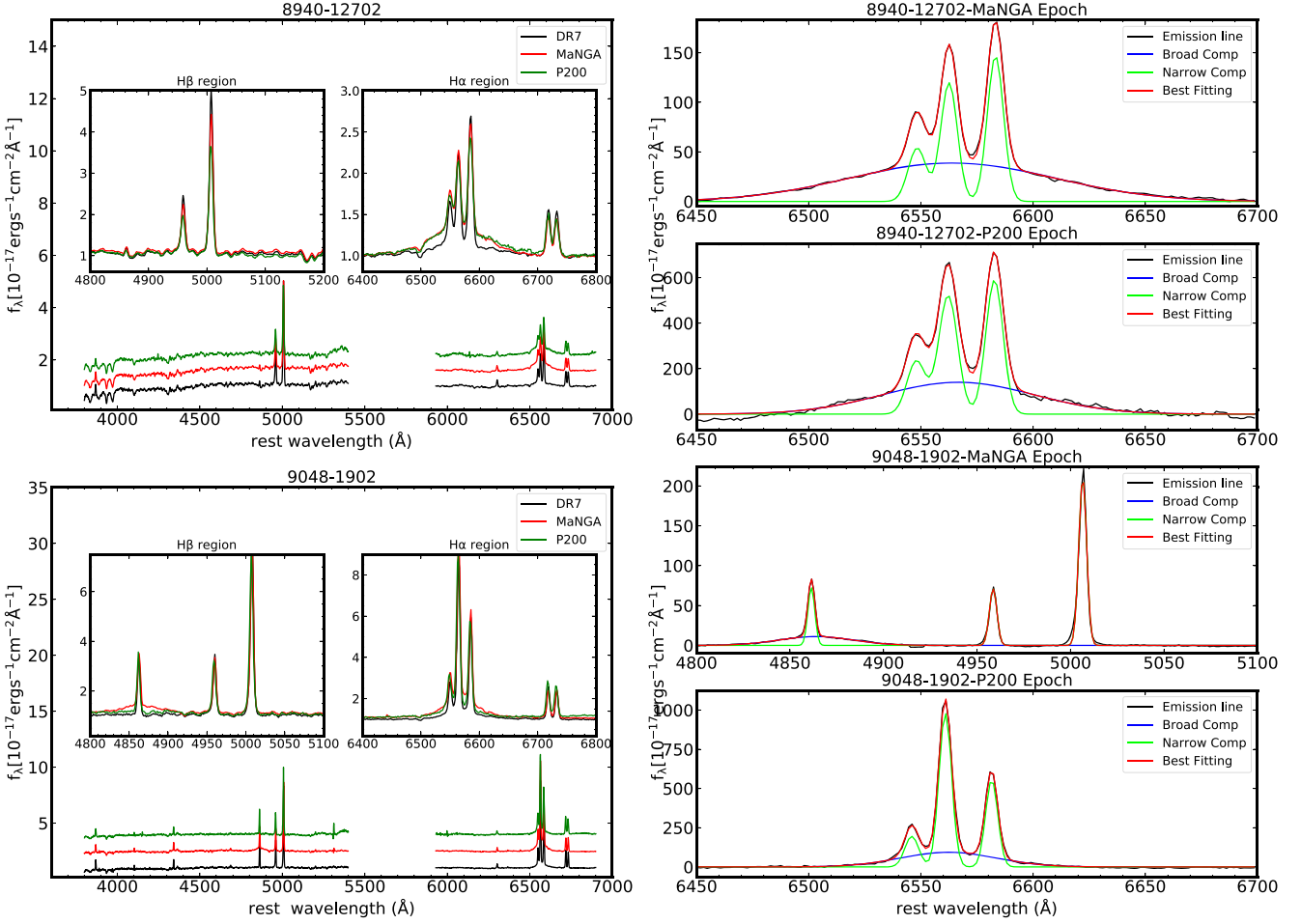


Figure 1. - continued.

continuum, [Fe II] component) directly. We ran the fitting with and without the AGN continuum, and compared the reduced chi-square. We found that the difference is very small so that the AGN continuum should be negligible. Fig. 1 presents the spectra of two epochs and the best fits for each AGN. Two of them (8940–12 702 and 9048–1902) were also followed up with the Hale Telescope (P200), which are further discussed in Section 3. Table 1 lists the basic information for CL-AGN candidates. The rest-frame time-scale for the type change is less than 16 yr in all cases (Table 1, column 8). Table 2 lists the final broad emission lines fitting results for CL-AGNs. The detection significance of the broad Balmer emission lines is larger than 5σ . In order to quantify the reliability of the line change for these sources as CL-AGN, we calculate the flux deviation $[N_\sigma(\lambda)]$ using the similar way (equation 1) of MacLeod et al. (2019). We define the maximum flux deviation of the line relative to the continuum $N_\sigma(4750\text{--}4940\text{ Å}) - N_\sigma(4750\text{ Å})$ as $N_\sigma(\text{H}\beta)$ for 9048–1902, and the line relative to the continuum $N_\sigma(6330\text{--}6700\text{ Å}) - N_\sigma(6330\text{ Å})$ as $N_\sigma(\text{H}\alpha)$ for the remaining four sources. As listed in Table 2, all of the $N_\sigma(\text{H}\alpha)$ or $N_\sigma(\text{H}\beta)$ are larger than 3, meaning that the CL-AGNs have reliable disappearance (or appearance) of broad H α or H β .

3 DATA ANALYSIS AND RESULTS

Fig. 1 shows the observed spectra at these two epochs (DR7 and MaNGA). According to the features of Balmer emission lines (H α

or H β), we found that in two of them the broad H α emission lines disappear. For the other three, two show the presence of strong broad H α emission lines, and the remaining one shows the emergence of strong broad H β lines. We observed two of these CL-AGNs (8940–12 702 and 9048–1902, both moving from ‘off’ to ‘on’ states) with Double Spectrograph mounted on the Palomar Hale Telescope (P200) on 2019 April 6. The slit width we used is 1.5 arcsec. The average seeing is 1.5 arcsec. The total exposure time for 8940–12 702 is 8400 s with the average S/N for continuum of about 50. For the 9048–1902, the total exposure time is 9000 s with the average S/N for continuum of about 30. The spectral resolution is about 1100 ($R = 1100$) for the blue band and about 1800 ($R = 1800$) for the red band. IRAF² was used to process the original images and extract the spectra. We selected a similar aperture with DR7 to extract the spectra. Fig. 1 (blue lines of the left-hand panels) shows the spectra of these two objects. Fig. 1 (right-hand panels) presents the emission line fitting results to these spectra. The rest-frame time difference from MaNGA epoch to P200 epoch is about 2 yr. The broad Balmer emission lines are still detected, implying that the type II supernova (SN II_n) scenario for these two objects can be ruled out. The third column of Table 2 shows that for the other three sources, the broad

²<http://iraf.noao.edu/>

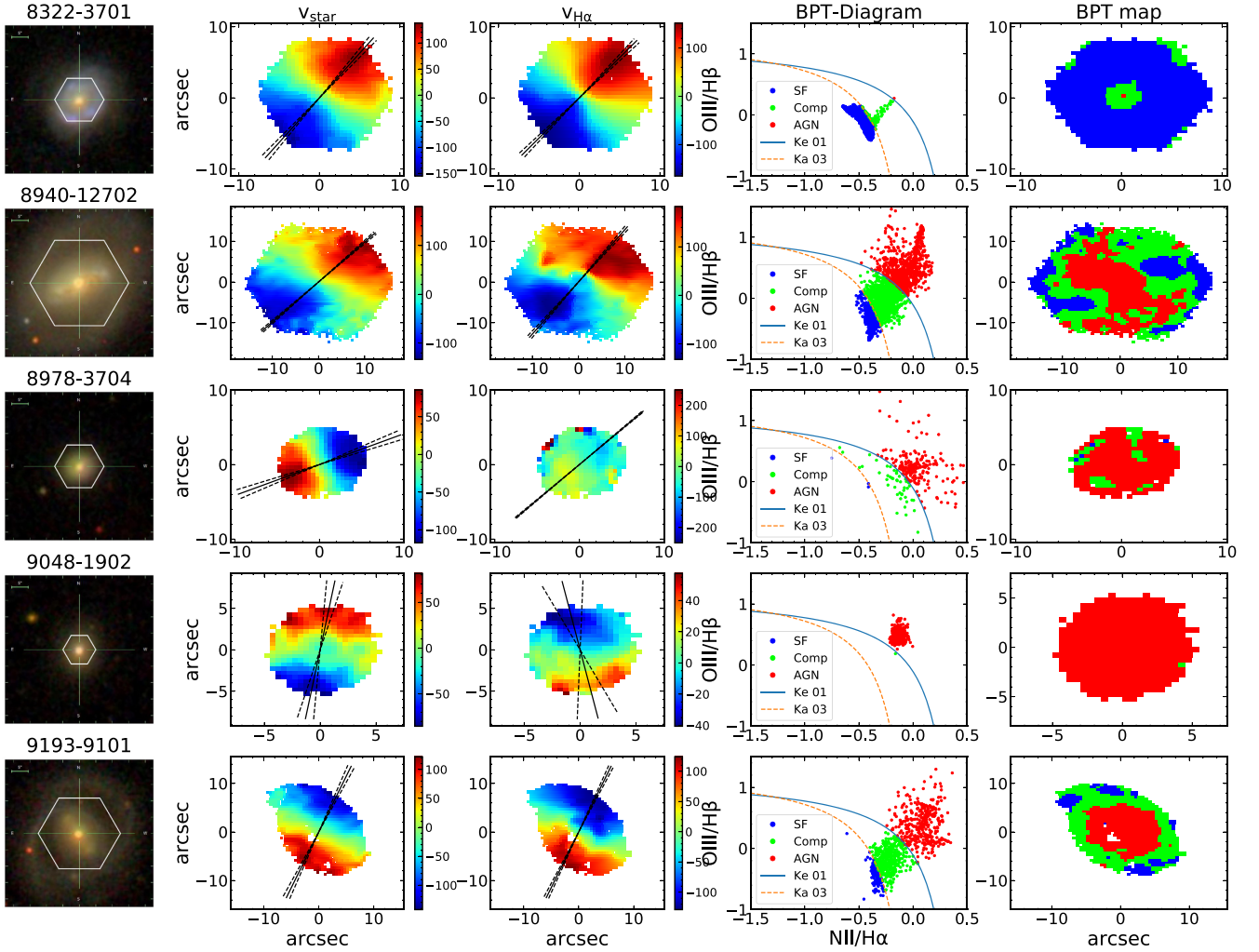


Figure 2. MaNGA observations of our sample of five CL-AGNs. The first column presents the SDSS false-colour image; the white hexagon marks the region covered by MaNGA bundle. The second and third columns display the stellar and gas velocity fields, respectively. The solid black line in each velocity field indicates the major axis fitted by FIT_KINEMATIC_PA, and two dashed black lines show the 1σ error. The last two columns show the BPT diagrams and the BPT diagram maps; the light blue solid curve ('Ke 01') and the orange dashed curve ('Ka 03') are the boundary of star formation, composite and AGN regions from Kewley et al. (2001, 2006) and Kauffmann et al. (2003). The blue area represents star formation regions, and the green area is the composite region. The remaining region (red) is dominated by AGNs. The spatially resolved information (all the flux of emission lines, $H\alpha$ velocity, and $H\alpha$ velocity dispersions) is obtained by fitting the emission lines with the MaNGA DAP pipeline (Westfall et al. 2019).

Table 1. Basic information of our CL-AGNs.

SDSS name (1)	Plate-IFU (2)	RA (J2000) (3)	Dec (J2000) (4)	z (5)	Epoch-DR7 ^a (6)	Epoch-MaNGA ^a (7)	Δt_{spec}^b (8)(yr)	State (on/off) ^c (9)
SDSS J131615.95+301552.2	8322–3701	13:16:15.95	+30:15:52.27	0.0492	53 852	57919	10.62	off
SDSS J080020.98+263648.8	8940–12 702	08:00:20.98	+26:36:48.81	0.0267	52 581	57 727	13.73	on
SDSS J163629.66+410222.4	8978–3704	16:36:29.66	+41:02:22.45	0.0473	52 379	57 463	13.30	off
SDSS J162501.43+241547.3	9048–1902	16:25:01.43	+24:15:47.3	0.0503	53 476	57 870	11.46	on
SDSS J030510.60–010431.6	9193–9101	03:05:10.60	−01:04:31.63	0.0451	51 873	57 693	15.26	on

Notes.^a Epoch given in modified Julian date.

^b Δt_{spec} is in rest frame.

^c 'off' means from DR7 to MaNGA, broad emission lines disappeared. 'on' means from DR7 to MaNGA, broad emission lines appeared.

$H\alpha$ luminosity is slightly higher than the peak of $H\alpha$ luminosity for most of the type II SNe (fig. 14 of Taddia et al. 2013). Due to the lack of more observational information for these sources, we cannot conclusively rule out their origin in an SN.

3.1 The kinematics properties of CL-AGNs

We now investigate the gas and stellar kinematic properties of these five CL-AGNs. Fig. 2 shows the SDSS images, stellar rotation maps,

Table 2. The broad emission line properties of CL-AGNs.

Plate-IFU	Flux (10^{-17} erg s $^{-1}$ cm $^{-2}$)	$\log_{10}L$ (erg s $^{-1}$)	FWHM (km s $^{-1}$)	Velocity Offset (km s $^{-1}$)	Reduced-chi square	N_{σ} H α (or H β)	Broad lines ^a
8322–3701	1517.52 \pm 49.00	40.940 \pm 0.014	4483.92 \pm 162.12	510.56 \pm 61.37	0.68	6.68	H α
8940–12702	4872.35 \pm 21.30	40.901 \pm 0.002	4911.07 \pm 25.36	38.50 \pm 8.74	1.69	6.45	H α
8978–3704	1010.46 \pm 34.12	40.728 \pm 0.015	4758.34 \pm 181.06	360.48 \pm 71.33	0.61	3.20	H α
9048–1902	626.91 \pm 7.11	40.576 \pm 0.005	2815.86 \pm 38.13	145.46 \pm 15.14	1.37	7.18	H β
9193–9101	2050.81 \pm 12.20	40.992 \pm 0.003	5992.49 \pm 41.60	– 327.79 \pm 15.27	1.76	8.43	H α

Note. ^a H α means the fitting results from the broad H α emission lines. H β means the fitting results from the broad H β emission lines.

Table 3. The kinematic PA, black hole mass, stellar velocity dispersion, and Eddington ratios.

Plate-IFU	PA _* (deg)	PA _{gas} (deg)	Δ PA (deg)	M_{BH} ($\times 10^6 M_{\odot}$)	σ_* (km s $^{-1}$)	$L_{\text{bol}}/L_{\text{edd}}$
8322–3701	141.5 \pm 2.7	138.5 \pm 2.2	3.0 \pm 3.5	11.49 ^{+2.72} _{–2.26}	132.80 \pm 3.84	0.08
8940–12 702	134.5 \pm 1.2	142.0 \pm 1.7	7.5 \pm 2.1	13.26 ^{+3.02} _{–2.45}	145.80 \pm 5.59	0.06
8978–3704	112.5 \pm 3.5	133.5 \pm 0.5	21.0 \pm 3.5	9.95 ^{+2.41} _{–2.02}	101.26 \pm 4.09	0.05
9048–1902	171.0 \pm 5.0	11.0 \pm 12.7	160.0 \pm 13.7	4.56 ^{+0.41} _{–0.41}	103.75 \pm 10.31	0.29
9193–9101	156.5 \pm 2.5	156.5 \pm 1.7	0.0 \pm 3.1	22.44 ^{+5.21} _{–4.28}	168.47 \pm 4.87	0.03

H α rotation maps, and BPT diagrams for all five CL-AGNs. These spatially resolved maps are produced by MaNGA DAP (Westfall et al. 2019). The methods of Krajnović et al. (2006) in Appendix C were used to estimate the kinematics position angle (PA). The kinematic misalignment between gas and stars was quantified by $\Delta\text{PA} = |\text{PA}_* - \text{PA}_{\text{gas}}|$, where PA_{*} and PA_{gas} are the PA of stars and gas, respectively. As listed in Table 3 and Fig. 2, one of the five sources shows counter-rotating features ($\Delta\text{PA} = 160^\circ$), while the remaining four display aligned gas and stellar kinematics ($\Delta\text{PA} < 30^\circ$). Chen et al. (2016) found that 9 of 489 blue star-forming galaxies are counter-rotators ($\Delta\text{PA} > 150^\circ$). The fraction is about 1.84 ± 0.61 per cent. Our CL-AGNs show a higher but not statistically significant fraction (20 ± 16 per cent) of counter-rotating features than normal blue star-forming galaxies.

3.2 Global star formation rate (SFR), bulge kinematics, and axial ratio (b/a)

We cross-matched our CL-AGN candidates with the GALEX-SDSS-WISE Legacy Catalogue (GSWLC) (Salim et al. 2016; Salim, Boquien & Lee 2018) to obtain global SFRs and stellar masses (M_*). In order to compare the properties of CL-AGNs and non-changing-look AGNs (NCL-AGNs), we defined 226 NCL-AGNs, which do not show any type of change between MaNGA and DR7 epochs. A caveat here is that by comparing only two spectra that are ~ 10 yr apart it is possible that some sources did not change the type and back again in between the two observations. The NCL-AGNs sample may therefore contain some CL-AGNs that were not caught. Additionally, some CL-AGNs may not be identified as such because the data quality is not sufficiently good to detect the line change. However, all of these outliers should be a tiny fraction, which should not affect our results. The left-hand panel of Fig. 3 displays the location of our CL-AGN candidates along with normal AGNs on the SFR– M_* plane. The red solid line is the boundary of the star-forming main sequence. Charlton et al. (2019) used the way of Sérsic indices versus colour diagram to separate galaxies as blue discs, green valley, and red spheroids, and found that all of their faded CL-AGN host galaxies are located in the green valley region. The possible reason is that we defined the star-forming main sequence in different

ways. We also used SFR versus stellar mass to check the faded CL-AGN host galaxies of Charlton et al. (2019). Although there is only one target of Charlton et al. (2019) that has been matched with the MPA-JHU catalogue, this galaxy is located in the star-forming main-sequence region. If all of our five CL-AGNs used SFRs from the MPA-JHU catalogue, they still locate in the star-forming main-sequence region. This panel demonstrates that most of CL-AGNs and NCL-AGNs are located within the star-forming main-sequence region. There are no significant differences between CL-AGNs and NCL-AGNs.

The middle panel of Fig. 3 shows the bulge kinematics for CL-AGNs and NCL-AGNs. For early-type galaxies observed by IFU, Emsellem et al. (2007) and Cappellari (2016) provided a simple parameter λ_R to trace the stellar angular momentum of a galaxy:

$$\lambda_R \equiv \frac{\langle R|V| \rangle}{\langle R\sqrt{V^2 + \sigma^2} \rangle} = \frac{\sum_{n=1}^N F_n R_n |V_n|}{\sum_{n=1}^N F_n R_n \sqrt{V^2 + \sigma^2}}, \quad (1)$$

where F is the flux, R is the circular radius, V is the stellar velocity, σ is the stellar velocity dispersion, and N is the number of spaxels. A large λ_R represents a fast rotator, and a small λ_R indicates a slow rotator. The SFR versus M_* diagram (left-hand panel of Fig. 3) reveals that most of the CL-AGNs and NCL-AGNs are star-forming galaxies (late type). We applied this same technique to measure λ_{Re} of bulges [$\lambda_{\text{Re(bulge)}}$] of our CL-AGNs that have spiral morphologies. Emsellem et al. (2011) provided an empirical diagnostic to distinguish fast and slow rotators according to the diagram of λ_{Re} versus ϵ , where ϵ is the apparent ellipticity ($\epsilon = 1 - b/a$). The middle panel of Fig. 3 shows the $\lambda_{\text{Re(bulge)}} - \epsilon$ diagram for CL-AGNs and other NCL-AGNs. The bulge Re is measured by MaNGA PyMorph Photometric Value Added Catalogue (Fischer, Domínguez Sánchez & Bernardi 2019). The middle panel of Fig. 3 shows three CL-AGNs possess slow-rotator bulges, meaning that galaxies may have undergone the dry merger process. The other two CL-AGNs have fast-rotator bulges, implying that galaxies have undergone the gas-rich merging or gas accretion processes (Cappellari 2016). NCL-AGNs and CL-AGNs have similar distributions in the $\lambda_{\text{Re(bulge)}} - \epsilon$ diagram.

In order to compare the properties of b/a between CL-AGNs and normal AGNs, we construct a sample of 6070 type I NCL-AGNs

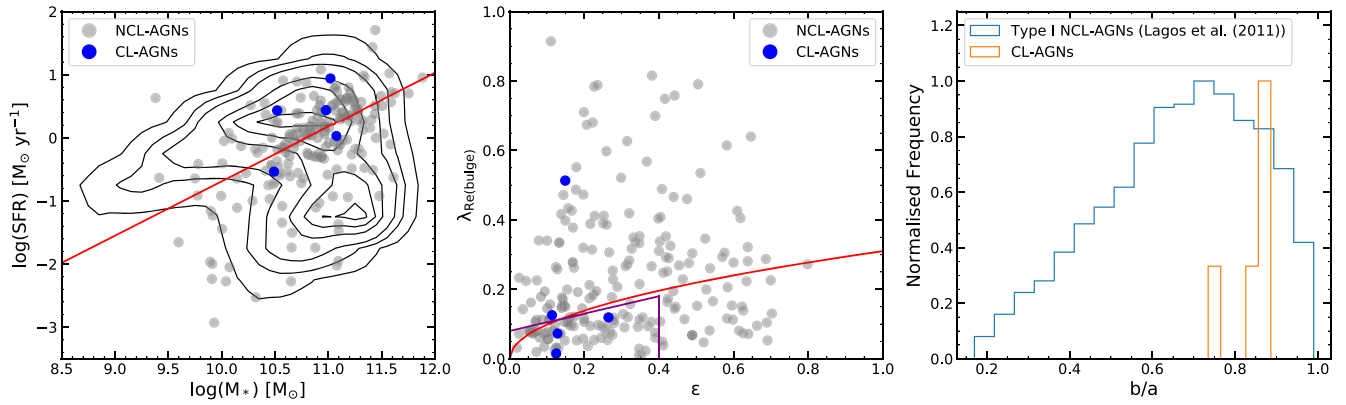


Figure 3. Left-hand panel: The SFR– M_* diagram. Contours indicate the GSWLC sample. The blue filled circles are the CL-AGNs and the grey colour filled circles represent the NCL-AGNs classified by us using MaNGA MPL-6 sources. The red dashed line is an approximation of the boundary of the star-forming main sequence, which is adopted in fig. 11 of Chang et al. (2015) at the 1σ level in scatter. The approximate slope and intercept are from Jin et al. (2016). Middle panel: The $\lambda_{\text{Re(bulge)}}-\epsilon$ diagram. The blue filled circles indicate the CL-AGNs and the grey colour filled circles represent the NCL-AGNs. The solid red line is the division between fast and slow rotators proposed by Emsellem et al. (2011); the purple line is the fast/slow rotator separation proposed by Cappellari (2016). Objects above these lines are ‘fast rotators’ and at the bottom of these lines means a slow rotator. The right-hand panel displays the distribution of b/a for CL-AGNs and type I NCL-AGNs. The type I NCL-AGNs are from Lagos et al. (2011).

from Lagos et al. (2011). The right-hand panel in Fig. 3 presents the distribution of b/a for our CL-AGNs and their type I NCL-AGNs. The b/a of CL-AGNs are drawn from the data release by MaNGA³ DAP (Westfall et al. 2019). The b/a of type I NCL-AGNs are drawn from Lagos et al. (2011). This panel indicates that all of our CL-AGNs are face-on galaxies, with $b/a > 0.7$. We randomly select five sources from the type I NCL-AGNs and found that there is a 2.28 per cent probability that the selected galaxies have $b/a > 0.7$. It appears that CL-AGNs favour more face-on than that of type I NCL-AGNs. This implies that the host galaxy obscuration may hamper the discovery of CL-AGNs.

3.3 Bulge properties

The Sérsic index is a useful parameter to classify the morphologies of our CL-AGNs. We use GALFIT (Peng et al. 2002, 2010) to fit the surface brightness profile for SDSS g -, r -, and i -band images. Charlton et al. (2019) studied four faded CL-AGNs using broadband images. They pointed out that although the quasars have faded, usually they did not disappear completely. So when they fitted the surface brightness profile, they added a PSF-like component to avoid central concentrations. Following the theory of Charlton et al. (2019), when we use GALFIT to fit the surface brightness profile for our CL-AGNs, we used both one Sérsic model and two Sérsic models to fit them. The fitting results are listed in Table 4. Two component fittings are needed for four CL-AGNs while only one component is enough for the remaining. Table 4 shows that four galaxies have a pseudo-bulge (Sérsic index < 4) and one has a classical bulge (Sérsic index > 4) features.

3.4 Black hole mass (M_{BH}) and $M_{\text{BH}}-\sigma$ relation

CL-AGNs offer an opportunity to study the $M_{\text{BH}}-\sigma$ relationship: When the broad lines are present, the black hole mass can be measured; when the broad lines disappear and the AGN continua fades, the velocity dispersion of bulges can be measured. We used the formula of Greene & Ho (2005) to estimate the black

hole masses from the line width of broad $\text{H}\alpha$ and $\text{H}\beta$. Table 2 listed the fitting results of broad Balmer emission lines. The stellar velocity dispersions (σ_*) and the errors are also provided by PPXF. The instrument velocity dispersion has been removed (Westfall et al. 2019). The derived M_{BH} and σ_* are listed in Table 3.

Fig. 4 shows the distribution of CL-AGNs in the $M_{\text{BH}}-\sigma_*$ plane with NCL-AGNs. As shown in the figure, CL-AGNs generally follow the same trend as the NCL-AGNs. In Section 3.3, it was shown that 80 per cent of our CL-AGNs possess pseudo-bulge features. Ho & Kim (2014) reported that the relation for pseudo-bulges has a different zero-point and much larger scatter than classical bulges and ellipticals in the $M_{\text{BH}}-\sigma$ relation. Unfortunately, in our work the number of CL-AGNs is too small to make a robust determination of the relationship itself.

Some recent results pointed out that CL-AGNs have systematically lower Eddington ratios than NCL-AGNs (e.g. Rumbaugh et al. 2018; MacLeod et al. 2019). Greene & Ho (2005) provided the empirical correlations between broad $\text{H}\alpha$ (or $\text{H}\beta$) luminosities and optical continuum luminosity (L_{5100}). According to the bolometric correction factors provided by Netzer (2019), we estimated the bolometric luminosities for each CL-AGN by L_{5100} . Then we estimated the Eddington ratio ($L_{\text{bol}}/L_{\text{edd}}$) for each source, where L_{bol} is the bolometric luminosity and L_{edd} is the Eddington luminosity, as listed in the last column of Table 3. Compared the Eddington ratios with Rumbaugh et al. (2018) and MacLeod et al. (2019), the results show that the CL-AGNs have systematically lower Eddington ratios than those of NCL-AGNs.

4 SUMMARY

In this work, we identified five CL-AGNs by combining data from SDSS-I/II (DR7) and MaNGA, and studied the host galaxy properties for these sources. The main results are as follows:

- (1) Most of CL-AGNs and NCL-AGNs are located within the star-forming main-sequence region.
- (2) Our CL-AGNs show a higher but not statistically significant fraction (20 ± 16 per cent) of counter-rotating features as compared to that (1.84 ± 0.61 per cent) in general blue star-forming galaxies.

³<https://dr15.sdss.org/sas/dr15/manga/spectro/analysis/v2.4.3/2.2.1/>

Table 4. Sérsic index fitting results from GALFIT.

Plate-IFU	Band	PSF (Magnitude)	Component label	Sérsic index	Reduced-chi square
8322–3701	<i>g</i>	17.90 ± 0.01	Sérsic 1	1.51 ± 0.02	1.43
			Sérsic 2	0.06 ± 0.01	
	<i>r</i>	17.21 ± 0.01	Sérsic 1	2.12 ± 0.02	1.28
			Sérsic 2	0.06 ± 0.01	
	<i>i</i>	16.81 ± 0.01	Sérsic 1	2.28 ± 0.03	1.26
8940–12 702	<i>g</i>	18.18 ± 0.01	Sérsic 1	5.16 ± 0.06	1.37
			Sérsic 2	0.32 ± 0.01	
	<i>r</i>	18.68 ± 0.02	Sérsic 1	7.47 ± 0.09	1.44
			Sérsic 2	0.48 ± 0.01	
	<i>i</i>	18.30 ± 0.03	Sérsic 1	9.08 ± 0.12	1.33
8978–3704	<i>g</i>	20.29 ± 0.08	Sérsic 1	1.47 ± 0.02	1.21
	<i>r</i>	18.55 ± 0.03	Sérsic 1	1.52 ± 0.01	1.22
	<i>i</i>	18.52 ± 0.01	Sérsic 1	1.47 ± 0.01	1.19
9048–1902	<i>g</i>	19.56 ± 0.07	Sérsic 1	1.18 ± 0.05	1.17
			Sérsic 2	1.78 ± 0.09	
	<i>r</i>	18.61 ± 0.07	Sérsic 1	1.79 ± 0.06	1.16
			Sérsic 2	0.62 ± 0.08	
	<i>i</i>	17.82 ± 0.06	Sérsic 1	2.25 ± 0.03	1.14
9193–9101	<i>g</i>	18.34 ± 0.01	Sérsic 1	1.77 ± 0.04	1.13
			Sérsic 2	0.15 ± 0.01	
	<i>r</i>	17.74 ± 0.01	Sérsic 1	1.88 ± 0.02	1.22
			Sérsic 2	0.16 ± 0.01	
	<i>i</i>	17.48 ± 0.01	Sérsic 1	2.55 ± 0.03	1.28
			Sérsic 2	0.16 ± 0.01	

Note. The third column shows the magnitude of the PSF component added to each fit. The fifth column shows the fitting results of the Sérsic index. The last column shows the goodness of each fit.

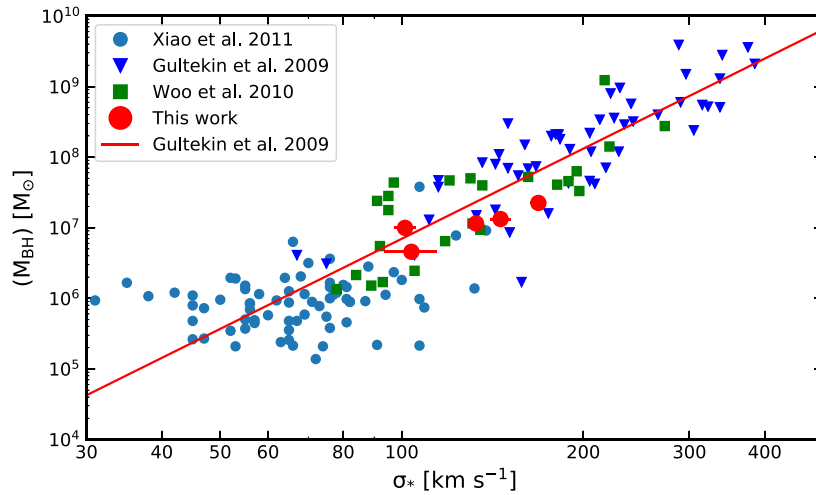


Figure 4. $M_{\text{BH}}-\sigma_*$ relation diagram for CL-AGNs and a set of normal AGNs. The red filled circles represent our sample of five CL-AGNs. Other symbols represent normal AGNs from Gültekin et al. (2009), Xiao et al. (2011), and Woo et al. (2010). The red solid line indicates the $M_{\text{BH}}-\sigma_*$ relation from Gültekin et al. (2009).

(3) CL-AGNs favour more face-on than that of type I NCL-AGNs, implying that the host galaxy obscuration may hamper the discovery of CL-AGNs.

(4) CL-AGNs and NCL-AGNs have similar distributions in the $\lambda_{\text{Re(bulge)}}-\epsilon$ diagram.

(5) The 80 ± 16 per cent of our CL-AGNs do possess pseudobulge features, and follow the overall NCL-AGN $M_{\text{BH}}-\sigma_*$ relationship.

(6) According to the latest observation spectra and the type transition time-scales, the transition mechanisms of SN IIn scenario have been excluded for two of our CL-AGNs.

Overall, the host galaxy properties give some new insights to comprehend some special properties of CL-AGNs. Some researches pointed out that the CL phenomenon is related to rapid changes in the inner accretion disc (e.g. Noda & Done 2018; Ross et al. 2018). The

larger scale environment of CL-AGNs can provide the environment where the black hole grows and more insights into the circumstances influencing co-evolution.

ACKNOWLEDGEMENTS

We thank the referee for a detailed report that helped significantly in improving the presentation of our work. XY and YS acknowledge the support from the National Key R&D Program of China (nos. 2018YFA0404502 and 2017YFA0402704), the National Natural Science Foundation of China (NSFC grants 11825302, 11733002, and 11773013). YS thanks the support from the Tencent Foundation through the XPLOER PRIZE. RAR thanks partial financial support from Conselho Nacional de Desenvolvimento Científico e Tecnológico (202582/2018-3 and 302280/2019-7) and Fundação de Amparo à Pesquisa do Estado do Rio Grande do Sul (17/2551-0001144-9 and 16/2551-0000251-7). RR thanks CNPq, CAPES, and FAPERGS for financial support. The authors thank Jujia Zhang for his help with P200 data reduction. The authors thank Donald Schneider's valuable suggestions.

This research uses data obtained through the Telescope Access Program (TAP), which has been funded by the National Astronomical Observatories, Chinese Academy of Sciences, and the Special Fund for Astronomy from the Ministry of Finance. Observations obtained with the Hale Telescope at Palomar Observatory were obtained as part of an agreement between the National Astronomical Observatories, Chinese Academy of Sciences, and the California Institute of Technology.

Funding for the SDSS-IV has been provided by the Alfred P. Sloan Foundation, the U.S. Department of Energy Office of Science, and the Participating Institutions. SDSS-IV acknowledges support and resources from the Center for High-Performance Computing at the University of Utah. The SDSS web site is www.sdss.org.

SDSS-IV is managed by the Astrophysical Research Consortium for the Participating Institutions of the SDSS Collaboration including the Brazilian Participation Group, the Carnegie Institution for Science, Carnegie Mellon University, the Chilean Participation Group, the French Participation Group, Harvard-Smithsonian Center for Astrophysics, Instituto de Astrofísica de Canarias, The Johns Hopkins University, Kavli Institute for the Physics and Mathematics of the Universe (IPMU)/University of Tokyo, Lawrence Berkeley National Laboratory, Leibniz Institut für Astrophysik Potsdam (AIP), Max-Planck-Institut für Astronomie (MPIA Heidelberg), Max-Planck-Institut für Astrophysik (MPA Garching), Max-Planck-Institut für Extraterrestrische Physik (MPE), National Astronomical Observatories of China, New Mexico State University, New York University, University of Notre Dame, Observatório Nacional/MCTI, The Ohio State University, Pennsylvania State University, Shanghai Astronomical Observatory, United Kingdom Participation Group, Universidad Nacional Autónoma de México, University of Arizona, University of Colorado Boulder, University of Oxford, University of Portsmouth, University of Utah, University of Virginia, University of Washington, University of Wisconsin, Vanderbilt University, and Yale University.

DATA AVAILABILITY

The data underlying this article will be shared on reasonable request to the corresponding author.

REFERENCES

Abazajian K. N. et al., 2009, *ApJS*, 182, 543
Antonucci R., 1993, *ARA&A*, 31, 473

Baldwin J. A., Phillips M. M., Terlevich R., 1981, *PASP*, 93, 5
Belfiore F. et al., 2016, *MNRAS*, 461, 3111
Bing L. et al., 2019, *MNRAS*, 482, 194
Blanton M. R. et al., 2017, *AJ*, 154, 28
Bundy K. et al., 2015, *ApJ*, 798, 7
Cappellari M., 2016, *ARA&A*, 54, 597
Cappellari M., 2017, *MNRAS*, 466, 798
Cappellari M., Emsellem E., 2004, *PASP*, 116, 138
Chang Y.-Y., van der Wel A., da Cunha E., Rix H.-W., 2015, *ApJS*, 219, 8
Charlton P. J. L., Ruan J. J., Haggard D., Anderson S. F., Eracleous M., MacLeod C. L., Runnoe J. C., 2019, *ApJ*, 876, 75
Chen Y.-M. et al., 2016, *Nat. Commun.*, 7, 13269
Cohen R. D., Rudy R. J., Puetter R. C., Ake T. B., Foltz C. B., 1986, *ApJ*, 311, 135
Denney K. D. et al., 2014, *ApJ*, 796, 134
Drory N. et al., 2015, *AJ*, 149, 77
Dunlop J. S., McLure R. J., Kukula M. J., Baum S. A., O'Dea C. P., Hughes D. H., 2003, *MNRAS*, 340, 1095
Elitzur M., 2012, *ApJ*, 747, L33
Elitzur M., Ho L. C., Trump J. R., 2014, *MNRAS*, 438, 3340
Emsellem E. et al., 2007, *MNRAS*, 379, 401
Emsellem E. et al., 2011, *MNRAS*, 414, 888
Falcón-Barroso J., Sánchez-Blázquez P., Vazdekis A., Ricciardelli E., Cardiel N., Cenarro A. J., Gorgas J., Peletier R. F., 2011, *A&A*, 532, A95
Fischer J. L., Domínguez Sánchez H., Bernardi M., 2019, *MNRAS*, 483, 2057
Gezari S. et al., 2017, *ApJ*, 835, 144
Goodrich R. W., 1989, *ApJ*, 342, 224
Greene J. E., Ho L. C., 2005, *ApJ*, 630, 122
Gültekin K. et al., 2009, *ApJ*, 698, 198
Gunn J. E. et al., 2006, *AJ*, 131, 2332
Guo H., Shen Y., Wang S., 2018, PyQSOFit: Python Code to Fit the Spectrum of Quasars, Astrophysics Source Code Library, record ascl:1809.008
Ho L. C., Kim M., 2014, *ApJ*, 789, 17
Jahnke K. et al., 2004, *ApJ*, 614, 568
Jin Y. et al., 2016, *MNRAS*, 463, 913
Kauffmann G. et al., 2003, *MNRAS*, 346, 1055
Kewley L. J., Dopita M. A., Sutherland R. S., Heisler C. A., Trevena J., 2001, *ApJ*, 556, 121
Kewley L. J., Groves B., Kauffmann G., Heckman T., 2006, *MNRAS*, 372, 961
Khachikian E. Y., Weedman D. W., 1971, *ApJ*, 164, L109
Kormendy J., Ho L. C., 2013, *ARA&A*, 51, 511
Krajinović D., Cappellari M., de Zeeuw P. T., Copin Y., 2006, *MNRAS*, 366, 787
Lagos C. D. P., Padilla N. D., Strauss M. A., Cora S. A., Hao L., 2011, *MNRAS*, 414, 2148
LaMassa S. M. et al., 2015, *ApJ*, 800, 144
Law D. R. et al., 2015, *AJ*, 150, 19
Law D. R. et al., 2016, *AJ*, 152, 83
McElroy R. E. et al., 2016, *A&A*, 593, L8
MacLeod C. L. et al., 2016, *MNRAS*, 457, 389
MacLeod C. L. et al., 2019, *ApJ*, 874, 8
Merloni A. et al., 2015, *MNRAS*, 452, 69
Netzer H., 2015, *ARA&A*, 53, 365
Netzer H., 2019, *MNRAS*, 488, 5185
Noda H., Done C., 2018, *MNRAS*, 480, 3898
O'Donnell J. E., 1994, *ApJ*, 422, 158
Parker M. L. et al., 2016, *MNRAS*, 461, 1927
Peng C. Y., Ho L. C., Impey C. D., Rix H.-W., 2002, *AJ*, 124, 266
Peng C. Y., Ho L. C., Impey C. D., Rix H.-W., 2010, *AJ*, 139, 2097
Penston M. V., Perez E., 1984, *MNRAS*, 211, 33 P
Petric A. O., Ho L. C., Flagey N. J. M., Scoville N. Z., 2015, *ApJS*, 219, 22
Pons E., Watson M. G., 2014, *A&A*, 568, A108
Raimundo S. I., Vestergaard M., Koay J. Y., Lawther D., Casasola V., Peterson B. M., 2019, *MNRAS*, 486, 123
Ross N. P. et al., 2018, *MNRAS*, 480, 4468
Ruan J. J. et al., 2016, *ApJ*, 826, 188

- Ruan J. J., Anderson S. F., Eracleous M., Green P. J., Haggard D., MacLeod C. L., Runnoe J. C., Sobolewska M. A., 2019, *ApJ*, 883, 76
- Rumbaugh N. et al., 2018, *ApJ*, 854, 160
- Runnoe J. C. et al., 2016, *MNRAS*, 455, 1691
- Salim S. et al., 2016, *ApJS*, 227, 2
- Salim S., Boquien M., Lee J. C., 2018, *ApJ*, 859, 11
- Sánchez-Blázquez P. et al., 2006, *MNRAS*, 371, 703
- Shi Y. et al., 2007, *ApJ*, 669, 841
- Shi Y., Rieke G. H., Smith P., Rigby J., Hines D., Donley J., Schmidt G., Diamond-Stanic A. M., 2010, *ApJ*, 714, 115
- Shi Y., Rieke G. H., Ogle P. M., Su K. Y. L., Balog Z., 2014, *ApJS*, 214, 23
- Smee S. A. et al., 2013, *AJ*, 146, 32
- Stasińska G. et al., 2008, *MNRAS*, 391, L29
- Taddia F. et al., 2013, *A&A*, 555, A10
- Trakhtenbrot B. et al., 2019, *ApJ*, 883, 94
- Urry C. M., Padovani P., 1995, *PASP*, 107, 803
- Wake D. A. et al., 2017, *AJ*, 154, 86
- Westfall K. B. et al., 2019, *AJ*, 158, 231
- Woo J.-H. et al., 2010, *ApJ*, 716, 269
- Xia X. Y. et al., 2012, *ApJ*, 750, 92
- Xiao T., Barth A. J., Greene J. E., Ho L. C., Bentz M. C., Ludwig R. R., Jiang Y., 2011, *ApJ*, 739, 28
- Xu L., Rieke G. H., Egami E., Haines C. P., Pereira M. J., Smith G. P., 2015, *ApJ*, 808, 159
- Yan R., Blanton M. R., 2012, *ApJ*, 747, 61
- Yan R. et al., 2016a, *AJ*, 152, 197
- Yan R. et al., 2016b, *AJ*, 151, 8
- Yang Q. et al., 2018, *ApJ*, 862, 109
- Zhang Z., Shi Y., Rieke G. H., Xia X., Wang Y., Sun B., Wan L., 2016, *ApJ*, 819, L27

This paper has been typeset from a \LaTeX file prepared by the author.