

Tree-ring structure of Galactic bar resonance

Rimpei Chiba ¹★ and Ralph Schönrich ²

¹Rudolf Peierls Centre for Theoretical Physics, University of Oxford, Oxford OX1 3PU, UK

²Mullard Space Science Laboratory, University College London, Holmbury St Mary, Dorking, Surrey RH5 6NT, UK

Accepted 2021 April 15. Received 2021 April 6; in original form 2021 February 17

ABSTRACT

Galaxy models have long predicted that galactic bars slow down by losing angular momentum to their postulated dark haloes. When the bar slows down, resonance sweeps radially outwards through the galactic disc while growing in volume, thereby sequentially capturing new stars at its surface/separatrix. Since trapped stars conserve their action of libration, which measures the relative distance to the resonance centre, the order of capturing is preserved: the surface of the resonance is dominated by stars captured recently at large radius, while the core of the resonance is occupied by stars trapped early at small radius. The slow down of the bar thus results in a rising mean metallicity of trapped stars from the surface towards the centre of the resonance as the Galaxy’s metallicity declines towards large radii. This argument, when applied to Solar neighbourhood stars, allows a novel precision measurement of the bar’s current pattern speed $\Omega_p = 35.5 \pm 0.8 \text{ km s}^{-1} \text{ kpc}^{-1}$, placing the corotation radius at $R_{\text{CR}} = 6.6 \pm 0.2 \text{ kpc}$. With this pattern speed, the corotation resonance precisely fits the Hercules stream in agreement with kinematics. Beyond corroborating the slow bar theory, this measurement manifests the deceleration of the bar of more than 24 per cent since its formation and thus the angular momentum transfer to the dark halo by dynamical friction. The measurement therefore supports the existence of a standard dark-matter halo rather than alternative models of gravity.

Key words: Galaxy: fundamental parameters – Galaxy: evolution – Galaxy: kinematics and dynamics.

1 INTRODUCTION

Many spiral galaxies, including our Milky Way, host a rotating bar at their centres. It has been predicted analytically (Tremaine & Weinberg 1984; Weinberg 1985, 2004; Weinberg & Katz 2007) and confirmed by simulations (e.g. Hernquist & Weinberg 1992; Debattista & Sellwood 2000; Athanassoula 2003; Martinez-Valpuesta, Shlosman & Heller 2006; Sellwood 2008) that these galactic bars experience dynamical friction against the postulated dark matter in the Galactic halo. This transfer of energy and angular momentum leads to less cuspy halo profiles (Weinberg & Katz 2002), but also slows the bar and allows it to grow (Athanassoula 1992).

The bar affects the stellar disc most effectively at resonances where the bar’s pattern speed is in commensurable relation with the orbital frequencies of stars. A well-known consequence of the non-linear response near resonances is that orbits there could become trapped. The trapped orbits occupy a distinct volume of phase space bounded by the separatrix. When the bar decelerates, these resonant islands sweep radially outwards through the stellar disc (Chiba, Friske & Schönrich 2020). As resonances migrate outwards, their phase-space volume generally grows, as we will demonstrate, so surrounding stars are sequentially captured into the resonance from the separatrix. Once in resonance, these trapped stars are dragged along with the resonance while approximately conserving their action of libration that characterizes the distance to the resonance centre. As a result, stars trapped at the early epoch of bar formation remain confined to the core of the resonance, while newly trapped stars fill in the phase

space opened up by the expanding separatrix; the bar resonance evolves analogously to the rings of a growing tree where new layers of cells form at the bark and continuously record the climate condition of that time. Since stars trapped later originate from larger radii with typically lower metallicity, the deceleration history of the bar is imprinted on the metallicity distribution inside the resonance.

The tree-ring structure of the bar resonance has a bi-directional application: Once the current pattern speed of the bar and thus the location of the resonance is known, we can read out the history of bar evolution by looking at the variation of stellar metallicity with distance to the resonance centre. Reversely, we can pin down the current bar pattern speed by demanding the metallicity inside the resonance to rise from the surface towards the core as expected from the deceleration of the bar.

Recent studies consistently provide evidence for a slow bar,¹ although the precise bar pattern speed has not yet clinched: Portail et al. (2017) derived $\Omega_p = 39 \pm 3.5 \text{ kpc km s}^{-1}$ by adopting their N -body model to density and kinematics of the red clump giants. Their model was used by Pérez-Villegas et al. (2017) to explain the Hercules stream in the Solar neighbourhood with the bar’s corotation resonance (CR) and was further examined by Monari et al. (2019) who showed that not only the Hercules but many of the prominent structures in local velocity and action space are well reproduced by the respective resonances of the bar, although they note that a slightly lower pattern speed (or a lower Solar azimuthal velocity) will yield

¹Here, ‘slow’ versus ‘fast’ does not refer to the ratio between corotation radius and bar length as in studies of external galaxies, but exclusively describes slow pattern speed $\Omega_p \lesssim 40 \text{ km s}^{-1} \text{ kpc}^{-1}$ instead of the formerly favoured fast models with $\Omega_p \gtrsim 50 \text{ km s}^{-1} \text{ kpc}^{-1}$. See Section 4.4 for a discussion.

* E-mail: rimpei.chiba@physics.ox.ac.uk

better agreement with the data. Clarke et al. (2019) showed that the integrated on-sky maps of the mean longitudinal proper motion are consistent with models with $\Omega_p = 37.5 \text{ km s}^{-1} \text{ kpc}^{-1}$. Sanders, Smith & Evans (2019) used the continuity equation and derived $\Omega_p = 41 \pm 3 \text{ km s}^{-1} \text{ kpc}^{-1}$ from proper motions of stars in the near side of the bar and $\Omega_p = 31 \pm 1 \text{ km s}^{-1} \text{ kpc}^{-1}$ when data on the far side is also considered. A similar conclusion is reported by Bovy et al. (2019) where they determined the pattern speed purely from kinematic data. Binney (2020b) applied Jeans' theorem to trapped orbits in the Solar neighbourhood and showed that its violation is minimized at $\Omega_p = 36 \pm 1 \text{ Gyr}^{-1} = 35.2 \pm 1 \text{ km s}^{-1} \text{ kpc}^{-1}$.

Given the above uncertainties, in this paper, we take the second approach: constraining the bar pattern speed from the metallicity ordering inside the resonance. Using photometric metallicity derived from *Gaia* DR2, we show that demanding a monotonic trend in metallicity inside the CR of the bar narrowly constrains the current pattern speed to $\Omega_p = 35.5 \pm 0.8 \text{ km s}^{-1} \text{ kpc}^{-1}$ where the CR perfectly fits the Hercules stream in agreement with kinematic models (e.g. Pérez-Villegas et al. 2017; Monari et al. 2019; Binney 2020b; Chiba et al. 2020; D'Onghia & L. Aguerri 2020).

In the following section, we provide a brief description on resonant dynamics that underlies our analysis. In Section 3, the method of estimating metallicity from *Gaia* photometry is described and tested with open clusters which the metallicity is measured independently from spectroscopy. In Section 4, we present the mean metallicity map in the local velocity/action plane and subsequently constrain the bar pattern speed by evaluating the likelihood of monotonic increase towards the resonance centre. Systematic errors due to sample selection and uncertainties in model parameters are reported. Section 5 sums up.

2 THEORETICAL BACKGROUND

2.1 Adiabatic invariants of resonantly trapped orbits

Just like Jupiter's Trojans and Greeks, stars in the Galactic disc can be trapped in CR with the bar. In the rotating frame of the bar, their orbits slowly circulate around the stable Lagrange points $L_{4,5}$ along the bar's minor axis. To describe orbital motions, galactic dynamics relies on 'actions' J , which are conserved under adiabatic (slow) changes of the potential, and their canonically conjugate 'angle' variables θ , which evolve linearly with time at constant rates Ω . In axisymmetric potentials, there are three actions. One commonly uses (J_R, J_φ, J_z) : the radial action J_R encodes the size of radial oscillations (and thus orbital eccentricity), the azimuthal action J_φ is the angular momentum component along the rotation axis, and the vertical action J_z quantifies oscillations perpendicular to the disc plane. The kinematic substructures found in the Solar neighbourhood weakly depend on J_z (Friske & Schönrich 2019), so in the following we describe the Galactic disc by a 2D model. In the presence of a non-axisymmetric bar, J_R and J_φ are no longer conserved but fluctuate with amplitude increasing towards resonances, i.e. $N_R \Omega_R + N_\varphi (\Omega_\varphi - \Omega_p) = 0$, where stars can be trapped. The dynamics near resonance exhibits slow motion around the resonance and is dealt by secular perturbation theory where the Hamiltonian is averaged over the fast motions (Lichtenberg & Lieberman 1992). The resulting Hamiltonian takes the form similar to that of a pendulum and the slow dynamics of trapped orbits is described in the *slow* angle-action plane (θ_s, J_s) with one degree of freedom, where

$$\theta_s \equiv N_R \theta_R + N_\varphi \left(\theta_\varphi - \int dt \Omega_p \right) \quad \text{and} \quad J_s \equiv \frac{J_\varphi}{N_\varphi}. \quad (1)$$

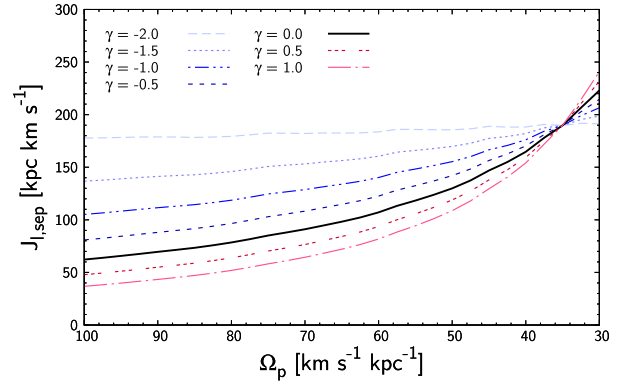


Figure 1. Phase-space volume of the bar's CR characterized by the libration action at the separatrix as a function of the decreasing pattern speed. The fast action is fixed to $J_f = 50 \text{ kpc km s}^{-1}$. Models with different bar growth/decay rate γ are plotted. All models take the same current bar amplitude $A = 0.02$ at the current pattern speed $\Omega_p = 35 \text{ km s}^{-1} \text{ kpc}^{-1}$. The resonance volume generally grows unless the bar amplitude decays rapidly ($\gamma \lesssim -2$).

The phase space in (θ_s, J_s) is split by the separatrix into regimes of libration (trapped orbits), and circulation (non-trapped orbits). Trapped orbits have two approximate constants of motions: the fast action $J_f \equiv J_R - (N_R/N_\varphi)J_\varphi$ (J_R in the case of CR), and the action of libration

$$J_\ell \equiv \frac{1}{2\pi} \oint d\theta_s J_s(\theta_s), \quad (2)$$

which characterizes the amplitude of motion around the resonance and takes maximal value at the separatrix. The conservation of J_ℓ is subject to the adiabaticity condition that the libration period, which diverges to infinity at the separatrix, is significantly smaller than the migration time-scale of the resonance. J_ℓ is thus not conserved near the separatrix, which allows orbits to enter or leave the resonance there.

2.2 Increase in phase-space volume of resonance

The phase-space volume occupied by each resonance is described by the libration action evaluated at the separatrix $J_{\ell,sep}$ (equation B4). Fig. 1 shows $J_{\ell,sep}$ of the CR at $J_f = 50 \text{ kpc km s}^{-1}$ as a function of the decreasing pattern speed. We present various bar models (Appendix A) with their strength varying according to

$$A(t) = A_1 \left[\frac{\Omega_p(t)}{\Omega_{p1}} \right]^{-\gamma}, \quad (3)$$

such that it takes the current amplitude $A_1 = 0.02$ at the current pattern speed $\Omega_{p1} = 35 \text{ km s}^{-1} \text{ kpc}^{-1}$. The functional form of $\Omega_p(t)$ is irrelevant here but, for instance, with $\Omega_p(t) \propto t^{-1}$ as assumed in our simulations, the bar strength scales as $A(t) \propto t^\gamma$. We show all cases where A is constant ($\gamma = 0$, black), decreases ($\gamma < 0$, blue), or increases ($\gamma > 0$, red). The phase-space volume of the resonance $J_{\ell,sep}$ increases monotonically unless the bar weakens significantly ($\gamma \lesssim -2$) while slowing down. N -body simulations show that deceleration of the bar is typically accompanied by an increase in bar amplitude (e.g. Debattista & Sellwood 2000; Martínez-Valpuesta et al. 2006; Ghafourian, Roshan & Abbassi 2020) except at the early buckling phase, so we expect the resonance to grow and thus continuously sweep up stars as it moves outwards. It can be trivially shown that $J_{\ell,sep}$ scales as $\sqrt{A} v_c^2 / \Omega_p$ in the epicycle limit (Appendix B) which explains why $J_{\ell,sep}$ is approximately constant when $\gamma = -2$.

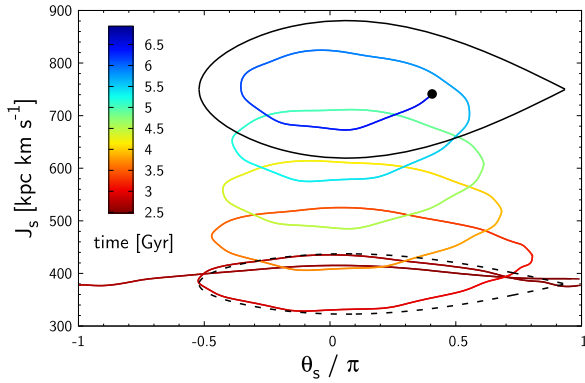


Figure 2. Trajectory of a test particle trapped and dragged by the CR of a decelerating bar (Appendix A) where the colour indicates time. The black curves represent the separatrix at the time of capture (dashed) and at the end of the simulation (solid). The star streams along the separatrix at the moment of capture but is then detached from the separatrix as the volume of resonance grows.

2.3 Tree-ring structure of resonance

When a resonance grows in volume, a fraction of stars outside the resonance that are passed by the separatrix may be captured into the resonance depending on their angular phase (see Appendix C for the angle-averaged capture probability). Fig. 2 shows a typical stellar trajectory captured into the sweeping resonance. The star initially circulates at $J_s \sim 400 \text{ kpc km s}^{-1}$ above the resonance, while the separatrix approaches from below. The star then passes the separatrix, becomes trapped in the resonant region and gets dragged towards larger J_s (and thus towards larger angular momentum J_φ) while keeping its J_ℓ and J_R approximately constant. The black curves depict the separatrix (calculated via perturbation theory, Appendix B) at the time of trapping (dashed) and at the final time (solid).

The conservation of the libration action J_ℓ has an interesting consequence: Since the phase-space volume of the resonance grows as the bar slows down, which is directly visible in Fig. 2 as the increase in volume occupied by the separatrix, the gap between the separatrix and the trapped orbits grows. Due to Liouville’s theorem, this interspace must be filled with newly trapped stars, and so the resonance builds up layers of trapped stars like a tree grows rings at its bark.

As demonstrated with our test particle simulation in the upper panel of Fig. 3, this separates the final resonance into two regimes: the core and the growth region. The initial core, marked by the white curve mapping the original separatrix on to the current volume, contains a relatively homogeneous population trapped initially from further inside the disc at the formation of the bar. Measuring the core can inform us about the initial size and location of the resonance. Between the core and the current separatrix (solid black) lies the growth region where the birth radius monotonically increases towards the separatrix as the fresh layers accreted at later times and thus at larger angular momentum.

Note that the initial formation of the bar (and also the subsequent slow down) introduce a slight phase-space spiral inside the resonance. Since the period at the separatrix is infinite, the number of wrappings reflects the number of libration periods at the core of the resonance since bar formation. The shape of the phase-space spiral could thus be used to predict the long-term variation in libration period, which is determined by the shape of the effective potential of the resonance,

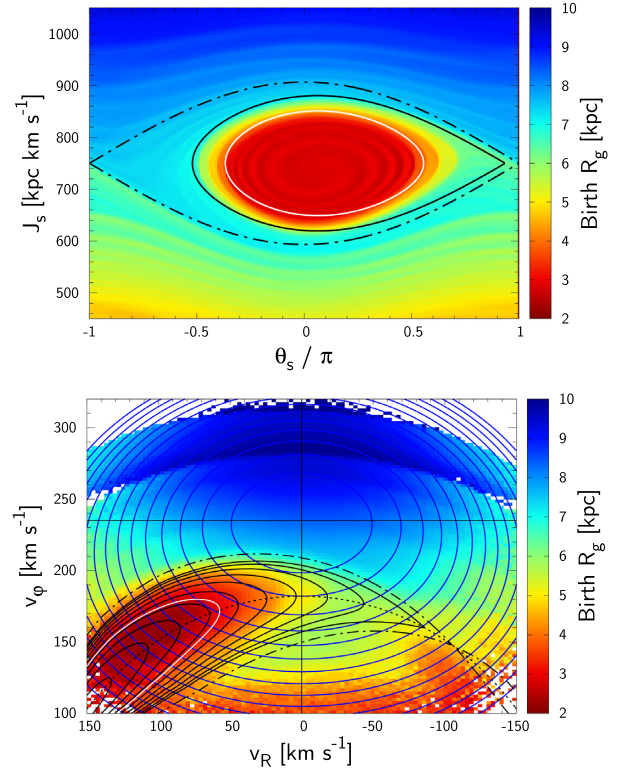


Figure 3. Test-particle simulation of the Galactic disc perturbed by a decelerating bar. Upper panel: Mean birth guiding radius in the slow angle-action plane at $J_R = 10 \text{ kpc km s}^{-1}$. The white line marks the contour of constant libration action with a value equivalent to that at the separatrix of the initial bar, while the black solid and dot-dashed curves mark the current separatrix of the moving and resting resonance, respectively. Lower panel: Mean birth guiding radius in local velocity space. The blue and black curves are contours of constant J_R and \hat{J}_ℓ .

and ultimately give an estimate on the age of the bar. However, at the current level of *Gaia* data this pattern is not yet detectable.

The black dot-dashed curve shows the separatrix calculated at fixed pattern speed, while the black solid curve takes into account the contraction of the separatrix due to the deceleration (Appendix B). Only stars within the latter are bound to the resonance, while stars in between are either in transit between the circulating zones or are becoming caught by the resonance.

To test this on observational data, we need to overcome two observational challenges: (i) the Sun is far from the Lagrange points and the available sample from *Gaia* only touches the outskirts of the CR so currently we can only see stars of relatively large J_ℓ or J_R that travel far enough from the Lagrange point to reach the Solar neighbourhood. The lower panel of Fig. 3 shows how resonances can be identified in the velocity plane of radial versus azimuthal velocity at the Solar neighbourhood, again coloured by the original guiding centre radii of stars. To guide the eye, we superposed contours of constant J_R in blue equally spaced by 30 kpc km s^{-1} , and J_ℓ normalized by the value at the separatrix ($\hat{J}_\ell \equiv J_\ell / J_{\ell, \text{sep}}$) in black with 0.1 spacing. The outermost black curve corresponds to the separatrix (as in the upper panel, dot-dashed for a *resting* resonance and solid for a *moving* resonance). The dotted black arch represents the location where the resonance condition is exactly satisfied. Although the centre of the resonance cannot be observed, we can see the mean birth radius decreasing towards the initial core of

the resonance marked by the white curve. (ii) In practice, we cannot measure the stellar position at trapping, so we employ the metallicity gradient of the Galactic disc: the metallicity of stars increases towards the Galactic centre, so metallicity is a proxy for radius at trapping with one caveat: older stars tend to be more metal poor and have more eccentric orbits/larger radial action, so we need to filter this out when investigating the metallicity trends in J_ℓ .

3 METHOD OF METALLICITY ESTIMATION

The metallicity of main-sequence stars can be inferred from the position across the main sequence in the colour–magnitude diagram. In general, stars in the main sequence with higher metallicity appear redder. The reason of reddening is two-fold: (i) metals enhance the internal opacity of the star that impedes radiative transport and hence forces the star to swell up with a lower surface temperature. (ii) Metals have most of their absorption lines in the UV-blue region. We restrict our analysis to stars sufficiently low on the main sequence so that their colours and magnitudes do not vary significantly with stellar age. In this region, the colour–magnitude position directly encodes the metallicity of a star, with some contamination from binaries and extinction (the extinction vector runs almost parallel to the main sequence, limiting the impact of reddening uncertainties on metallicity estimates).

3.1 Sample selection

We use stellar samples in the Solar neighbourhood (distance from Sun $s < 0.3$ kpc) taken from the *Gaia* DR2 RV catalogue (Cropper et al. 2018; Gaia Collaboration 2018; Sartoretti et al. 2018; Katz et al. 2019) with parallax offset and distance estimation from Schönrich, McMillan & Eyer (2019). We adopt the Solar Galactocentric radius $R_0 = 8.2$ kpc (Gravity Collaboration 2019), Solar Galactocentric azimuth with respect to the bar major axis 30° (Wegg, Gerhard & Portail 2015), Solar distance from the disc plane $z_\odot = 0.02$ kpc (Joshi 2007), and Solar velocity $(v_{R_\odot}, v_{\varphi_\odot} - v_c, v_{z_\odot}) = (-11.1, 12.24, 7.25)$ km s $^{-1}$ (Schönrich, Binney & Dehnen 2010). We apply quality cuts on parallax $p/\sigma_p > 10$ and restrict samples to those with Galactic latitude $b > 10^\circ$ to minimize the reddening effect by interstellar extinction. As the resonance lines are expected (and measured, see Friske & Schönrich 2019) to exert a mild drift with vertical energy, we exclude stars having $E_z > 200$ km 2 s $^{-2}$ corresponding to a maximum vertical velocity of $v_z = 20$ km s $^{-1}$ and a maximum vertical excursion from the Galactic plane of $z \sim 0.3$ kpc. The vertical potential is evaluated using the Milky Way model of McMillan (2017).

3.2 Colour–magnitude diagram

Fig. 4 shows the colour–magnitude diagram of the selected samples superposed by stellar isochrones with (a) fixed age (4 Gyr, blue) and (b) fixed metallicity ($[M/H] = 0$, red) constructed using PARSEC version 1.2S (Bressan et al. 2012) (*Gaia* passbands taken from Weiler 2018). As discussed at the beginning of this section, an increase in metallicity shifts the isochrones redwards, while age dependence only take an effect near the turn-off region, i.e. on the blue/bright end. To estimate the metallicity of individual stars, we generate isochrones with fixed age (4 Gyr by default) for metallicities $[M/H]$ between -1.0 and 0.5 dex in 0.05 dex increments, and linearly interpolate them in magnitude G . When evaluating the mean metallicity, we cut samples at $G < 5$ near the main-sequence turnoff point. We also apply an upper limit in

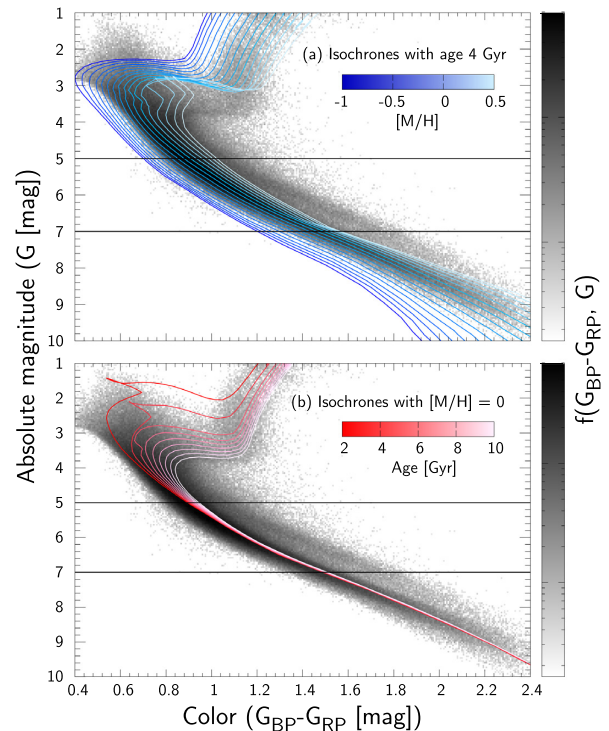


Figure 4. Colour–magnitude diagram of the selected stellar samples in the Solar Neighbourhood. The upper panel overlays isochrones with different metallicities at fixed age 4 Gyr, while the lower panel plots isochrones with different age at fixed metallicity $[M/H] = 0$. The binary sequence is visibly detached above the $[M/H] = 0.5$ isochrone, where we apply the upper metallicity cut. The two black horizontal lines show our upper/lower limit in magnitude G .

magnitude ($G < 7$) since the selection function in distance becomes more skewed with increasing magnitude. Finally, we discard samples with metallicity beyond $[M/H] = 0.5$ since they are most likely to be binary/double stars mistaken for a bright single star.

3.3 Calibration of photometric metallicity

Due to the contamination by binary/double stars, the metallicity estimated from photometry is generally biased towards high metallicity. To quantify this bias, and to validate our method, we applied our technique to open clusters with metallicities known from spectroscopic measurement. Fig. 5 compares our estimated metallicity $[M/H]$ with the literature values of $[\text{Fe}/\text{H}]$ taken from Netopil et al. (2016). We select *Gaia* samples within 20 mas from the cluster core and apply narrow cuts in proper motions around the peak ($\Delta\mu \sim 1$ mas yr $^{-1}$) to extract members of the clusters. The black data show metallicity inferred from stellar cluster with more than 100 sample stars, while the blue data show those with less than 100 but more than 10 samples. The metallicity estimated from *Gaia* photometry agrees well with that from spectroscopic surveys over a wide range of metallicity up to a constant offset² (0.091 ± 0.017 dex) shown in green line (linear fit). The result validates our method and demonstrates that we could compare our results quantitatively with spectroscopic metallicity $[\text{Fe}/\text{H}]$ by subtracting the constant offset. We caution, however, that

²Some of the bias may originate from variations in α enhancement (Casagrande et al. 2011).

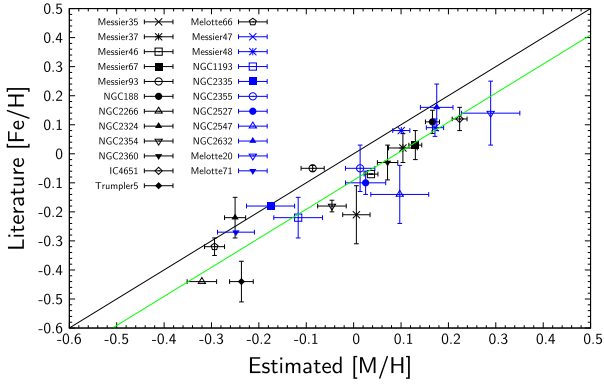


Figure 5. Metallicity of open clusters measured by our method compared with literature values (Netopil et al. 2016). Data points without vertical error bars are those lacking uncertainty reports in the reference. Open clusters with more than 100 stellar samples are shown in black while those with less than 100 but more than 10 sample stars are shown in blue. The green line, linearly fitted to the data, quantifies the offset 0.091 ± 0.017 dex of our metallicity estimation due to contamination from binary/double stars.

the literature values contain uncertainties beyond the shown error bars as evidenced by the scatter between different catalogues: e.g. Messier 67 has a metallicity of 0.03 ± 0.05 dex according to Netopil et al. (2016) but Carrera et al. (2019) report 0.07 ± 0.03 dex while Leaman (2012) reports -0.19 ± 0.042 dex.

4 RESULTS

4.1 Mean metallicity map in local velocity/action space

The left-hand panel of Fig. 6 shows the density of stars in the local velocity plane. As in Fig. 3, we overlay contours of constant J_R (blue) and \hat{J}_ℓ (black) at $\Omega_p = 35 \text{ km s}^{-1} \text{ kpc}^{-1}$. The stellar group concentrated around $(v_R, v_\phi) \sim (30, 190) \text{ km s}^{-1}$ is the ‘Hercules stream’. Since the studies by Dehnen (1999, 2000), the origin of the Hercules stream was suspected to be the non-resonant x_2 orbits circulating below the outer Lindblad resonance (OLR) of a fast bar

($\Omega_p \gtrsim 50 \text{ km s}^{-1} \text{ kpc}^{-1}$; e.g. Antoja et al. 2014; Fragkoudi et al. 2019). However, studies in the past few years have increasingly favoured a slow bar ($\Omega_p \lesssim 40 \text{ km s}^{-1} \text{ kpc}^{-1}$) in agreement with dynamical models fitted to the kinematics of inner gas (Sormani, Binney & Magorrian 2015) and red clump stars in the bar/bulge region (e.g. Portail et al. 2017; Clarke et al. 2019). In a slow bar model, the Hercules stream consists of orbits trapped in the CR of the bar (e.g. Pérez-Villegas et al. 2017; Monari et al. 2019; Binney 2020b; D’Onghia & L. Aguerrí 2020). This model has the problems that the deformation in the velocity distribution predicted by a constantly rotating bar is not strong enough and less asymmetric in v_R compared to observations. However, these problems are resolved by a slowing bar where the CR contracts towards positive v_R and brings stars at high phase-space density from the inner disc (Chiba et al. 2020). There are also models linking the Hercules with the 1:4 resonance of the bar (e.g. Hunt & Bovy 2018; Asano et al. 2020) or with transient spiral arms (e.g. Hunt et al. 2018), making the debate indecisive with kinematics only. We will show, however, that the decelerating slow bar model is singled out by the metallicity trend of Hercules stars. For an extensive comparison between different bar models, see Trick et al. (2021).

Fig. 6 right-hand panel colours the local velocity plane in mean metallicity. A similar plot is given by Antoja et al. (2017) based on spectroscopic metallicity obtained from the RAVE survey and the Geneva–Copenhagen survey. The overall distribution displays the anticipated trends: the decline of metallicity towards larger v_ϕ (or respectively $J_\phi = v_\phi R_0$, where R_0 is the Solar Galactocentric radius), reflecting the negative metallicity gradient in Galactocentric radius, and the lower metallicities at larger J_R , resulting from the age–metallicity and age–dispersion relationships. However, the most conspicuous feature is the high metallicity clump directly at the position of the Hercules stream. This has already been reported as early as Grenon (1972) from the Geneva photometry and Grenon (1999) using the *Hipparcos* catalogues. Since Hercules is an in-plane stellar stream and is not a dissolved cluster (Bovy & Hogg 2010) nor an accreted population (Kushniruk et al. 2020), the only natural explanation for its high metallicity is that it originates from the inner Galaxy. This is expected in a decelerating slow bar model since stars trapped in the CR have been dragged from small radii as the bar decelerates (Halle et al. 2018; Chiba et al. 2020). In

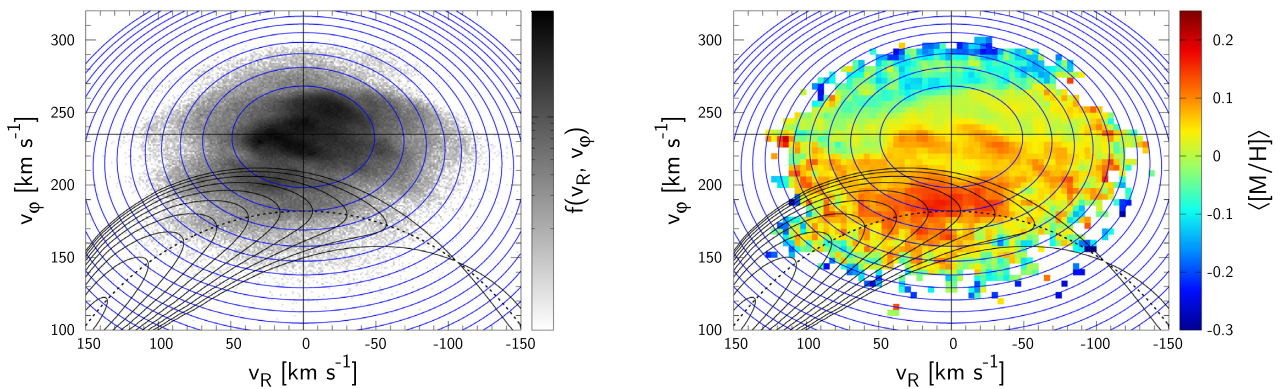


Figure 6. Density (left-hand panel) and mean metallicity (right-hand panel) of Solar neighbourhood stars in local velocity plane. Superposed are the uniformly spaced contours of constant J_R in blue and $\hat{J}_\ell \equiv J_\ell / J_{\ell, \text{sep}}$ in black. The dotted black curve marks the location where the resonance condition is exactly satisfied. The mean metallicity is calculated by fitting stellar isochrones to samples in each velocity cell of width 4 km s^{-1} . The Hercules moving group is relatively metal rich indicating an origin at small radii. As we go around the blue contours of constant J_R (in particular the three innermost ellipses), the metallicity rises as we cross the black curves towards small \hat{J}_ℓ in agreement with expectation from a decelerating bar model. Note that the colour palette is chosen so that metal-rich/poor stars appear with similar colour as small/large birth R_g in Fig. 3.

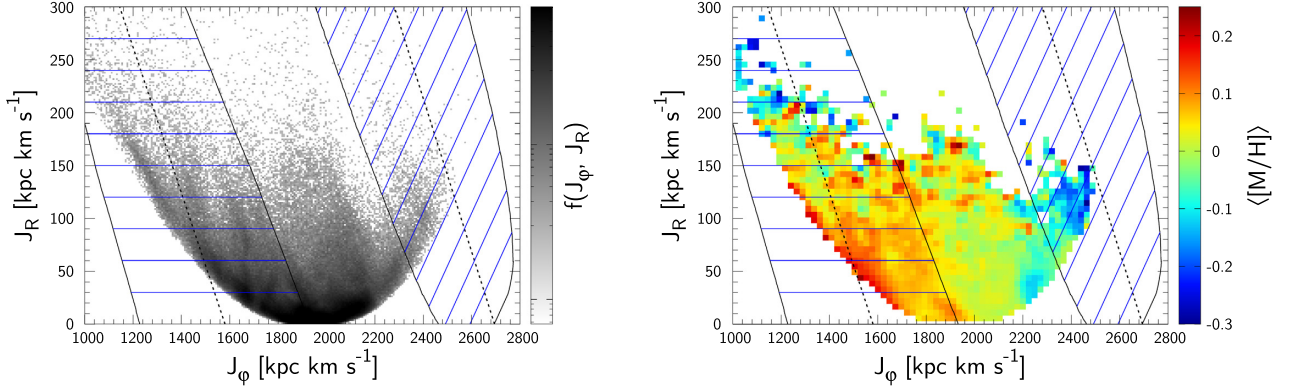


Figure 7. Density (left-hand panel) and mean metallicity (right-hand panel) of local stars in action space. The metal poor population appears at high J_ϕ (stars visiting the sun from the outer disc) and at high J_R (old stars). The dotted black lines are the CR (left) and the OLR (right) and the solid black lines mark the maximum excursion achieved by trapped orbits librating along contours of constant J_f (blue lines).

contrast, this observation is unexplainable with a fast bar model where Hercules stars are identified as non-resonant orbits that cannot have been dragged while the resonance swept. The metal-rich nature of Hercules is thus a strong indication that it is composed of resonantly trapped orbits rather than non-trapped orbits. Antoja et al. (2017) proposed that, in the context of a non-decelerating fast bar model, the high metallicity of Hercules may be explained by the non-resonant x_2 orbits which has a slightly smaller mean radius than orbits trapped in the OLR. However, as we show in Appendix E using a simple age–metallicity–dispersion relation, a fast bar model is incapable of reproducing the observed high metallicity at the position of the Hercules as the difference in birth radii between trapped and non-trapped orbits is too small (see Fig. E1). An analogous argument applies to a non-decelerating slow bar model. Only the decelerating slow bar model can bring the metal rich stars from far inside the disc sufficient to achieve metallicity above 0.2 dex as in the data.

Fig. 7 shows the density and mean metallicity in local action space where the general trend is best observed: the metallicity decreases towards large angular momentum due to the increase in birth radius but also towards large radial action due to the increase in age. There is clearly additional substructure, which can, however, be explained by resonances. Particularly, the metal-rich Hercules stream on the left side of the plot is fitted well with the CR where the black boundaries mark the maximum excursion of trapped orbits librating along constant $J_f = J_R$ (blue lines). At the predicted location of OLR, there is a clear over density (left-hand panel) comprised of metal poor stars (right-hand panel). The distance by which the stars at the OLR can be dragged is limited by the observed radial action; conservation of $J_f = J_R - J_\phi/2$ implies that the stars acquire a fixed amount of radial action per angular momentum gained, and so the stars observed at e.g. $J_R = 100 \text{ kpc km s}^{-1}$ have been dragged in J_ϕ by no more than $\Delta J_\phi = 200 \text{ kpc km s}^{-1}$ and thus we do not expect high metallicity. In fact, the orientation of resonant dragging in (J_R, J_ϕ) space, which is determined by the resonant vector (N_R, N_ϕ) ,³ casts strong limitation on the origin of the Hercules: any outer resonances with $N_R > 0$ will inevitably pump stars up towards larger J_R while dragging them towards the outer disc, so they cannot explain the metal-rich Hercules stars that we observe even at low J_R . The only resonance that can carry stars with high metallicity from the inner disc

without increasing their eccentricity is the CR ($N_R = 0$). Therefore, the slow bar is the only model that can explain the metal-rich nature of Hercules using resonantly trapped orbits.

We now map the metallicity on to the resonant actions of the CR to conduct the tree-ring analysis. For this, we have to set parameters for the bar which determine the mapping from (x, v) to (\hat{J}_ℓ, J_R) for each star within the region of the CR. The resulting mean metallicity in the (\hat{J}_ℓ, J_R) plane is shown in Fig. 8. The uncertainty of \hat{J}_ℓ propagated from the uncertainties in the *Gaia* data is at the percentage level (see Appendix D) so it would not qualitatively affect the signal. The contours of constant \hat{J}_ℓ and J_R now form a rectilinear grid. Only stars considered to be inside the resonance enter this plot, so the x -axis ranges between 0 (the resonance centre) and 1 (the separatrix). The parabola-like boundary on the left represents the minimum J_R required for trapped orbits to reach the Solar neighbourhood; since orbits with smaller \hat{J}_ℓ are confined closer to the Lagrange point, a larger minimum J_R is required to visit us. In the velocity plane, this boundary corresponds to points where the contours of \hat{J}_ℓ and J_R are tangential to each other. The mean metallicity increases towards small \hat{J}_ℓ (stars captured early at the inner disc) and small J_R (young stars), as indicated by the multicoloured arrows. To further clarify the metallicity trend in \hat{J}_ℓ , we show in the right-hand panel the metallicity after subtracting the gradient in J_R obtained by fitting Fig. 7 right-hand panel with a plane which yields $d[M/H]/dJ_R = -0.00078 \text{ dex kpc}^{-1} \text{ km}^{-1} \text{ s}$. We clearly see a monotonic increase towards the resonance centre as predicted for a growing/sweeping resonance, thus implying the slow down of the bar.

To get a quantitative grip on the observed $[M/H]$ feature, we project the 2D distribution on to 1D statistics in J_ℓ . Since the sample distribution over (J_ℓ, J_R) is non-uniform and the $[M/H]$ depends on J_R , a naive averaging over J_R would cause a fatal bias. Therefore, we instead calculate the gradient of $[M/H]$ with respect to J_ℓ at each fixed J_R and then average the gradient over J_R :

$$\frac{d\langle [M/H] \rangle}{d\hat{J}_\ell} = \frac{\sum_i^{N_{J_R}} w_i (\langle [M/H] \rangle_i^+ - \langle [M/H] \rangle_i^-)}{\Delta \hat{J}_\ell \sum_i^{N_{J_R}} w_i}, \quad w_i = \frac{n_i^+ n_i^-}{n_i^+ + n_i^-}, \quad (4)$$

where the superscript (\pm) denotes quantities associated with stars in the bins $\hat{J}_\ell \in [\hat{J}_\ell, \hat{J}_\ell + \Delta \hat{J}_\ell]$ and $\hat{J}_\ell \in [\hat{J}_\ell - \Delta \hat{J}_\ell, \hat{J}_\ell]$. n_i^\pm and $\langle [M/H] \rangle_i^\pm$ are the number of stars and the mean metallicity in the i th J_R bin, respectively. The weights w_i are necessary since each

³The direction of resonant dragging also depends on the sign of $G \equiv \partial^2 H_0 / \partial J_s^2$ which is identical for resonances at $N_R \geq 0$ (Chiba et al. 2020).

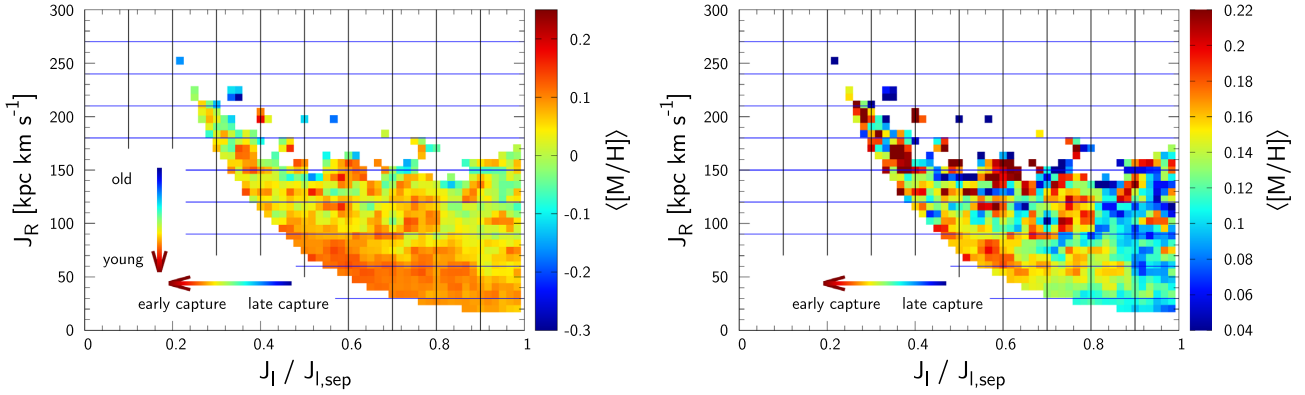


Figure 8. Mean metallicity of local stars trapped at the bar’s CR as a function of the resonant actions. Bar pattern speed set to $\Omega_p = 35 \text{ km s}^{-1} \text{ kpc}^{-1}$. Left-hand panel: Metallicity map on resonant actions \hat{J}_ℓ and J_R . The rectilinear grid corresponds to the contours of constant \hat{J}_ℓ and J_R drawn in the local velocity plane (Fig. 6). Metallicity is predicted to increase in the directions indicated by the multicoloured arrows. Right-hand panel: Same plot after removing the metallicity trend in J_R ($d[M/H]/dJ_R = -0.00078 \text{ dex kpc}^{-1} \text{ km}^{-1} \text{ s}$) to highlight the metallicity trend in \hat{J}_ℓ .

J_R bin contains a different number of stars. Once the metallicity gradient with respect to \hat{J}_ℓ is obtained, we reconstruct the metallicity as a function solely of \hat{J}_ℓ by integrating the gradient starting from the separatrix. We accumulate the uncertainty of the reconstructed metallicity while taking into account the correlated errors between the metallicity gradients evaluated at adjacent points where they use the same \hat{J}_ℓ bin in between. Here, we set the bin widths to $\Delta\hat{J}_\ell = 0.05$ and $\Delta J_R = 10 \text{ kpc km s}^{-1}$ below which the results do not change significantly.

The result for this is shown in Fig. 9. The left-hand panel shows the change of mean metallicity with \hat{J}_ℓ for a range of bar amplitudes A at fixed pattern speed $\Omega_p = 35 \text{ km s}^{-1} \text{ kpc}^{-1}$. The signal only weakly depends on the bar strength, i.e. over the whole range of reasonable bar amplitude, we see the same monotonic increase of metallicity towards the resonance centre. As explicitly demonstrated in Appendix E (see particularly Fig. E2) using pseudo-data generated from test-particle simulations, this uptrend in metallicity is only expected when the bar is slowing down. From the total increase in metallicity inside the resonance, we can quantify a lower limit for how much the bar has decelerated (this should turn into a full estimate once *Gaia* can penetrate the core of the resonance). In doing so, we must bear in mind that stars in the disc can be randomly scattered by fluctuations in the gravitational field due to external perturbations (e.g. mergers or satellite interactions) and intrinsic noises (e.g. transient spiral arms or giant molecular clouds), which will tend to weaken the observed metallicity gradient. With this caveat, and given the metallicity gradient of the Galactic disc -0.05 dex/kpc (Luck 2018), the maximum increase in the mean metallicity ($\sim 0.08 \text{ dex}$) implies that the corotation radius has moved at least $\sim 1.6 \text{ kpc}$ outward and thus the pattern speed has declined in excess of ~ 24 per cent since the formation of the bar.

The right-hand panel of Fig. 9 shows the metallicity trend inside the resonance for various bar pattern speeds at fixed bar strength $A = 0.02$. In contrast to the variation in bar amplitude, the pattern speed sensitively affects the metallicity structure: As we decrease the pattern speed, the resonance in the velocity plane shifts towards large v_ϕ so the metal rich Hercules stars are placed nearer to the lower separatrix of the resonance. Consequently, the metal rich stars become more concentrated at large J_ℓ and the metallicity wrongly drops towards the inner region of the mis-placed resonance. Similarly, for larger pattern speeds, the upper separatrix of the resonance approaches the metal rich zone and hence the relative increase of

metallicity from the separatrix becomes small. A monotonic rise in metallicity towards the core of the resonance is only observed with pattern speed $\Omega_p = 35 \text{ km s}^{-1} \text{ kpc}^{-1}$ where the CR fits the Hercules stream. This result demonstrates that the slow bar theory is consistent with and strongly favoured by prediction from a decelerating bar.

4.2 Estimation of bar pattern speed

In the last section, we have established the detailed metallicity pattern. We now use its strong Ω_p dependence to measure the bar pattern speed at high precision: The positioning of the resonant actions is only correct with the true pattern speed, and thus the reconstructed metallicity profile will come out of order if we get Ω_p wrong. Since we do not expect the metallicity to undulate against libration action, here we demand a monotonic increase of metallicity towards lower libration action which we quantify by the likelihood of the metallicity to increase at each point in \hat{J}_ℓ starting from the separatrix down to $\hat{J}_{\ell,\text{min}}$. We consider the metallicity change at each point from the previous value

$$z_i \equiv \langle [M/H] \rangle_i - \langle [M/H] \rangle_{i-1} \quad (5)$$

as a random variable distributed normally with its mean μ_{z_i} and uncertainty σ_{z_i} measured. The cumulative distribution function

$$F_i(x) = \frac{1}{2} \left[1 + \text{erf} \left(\frac{x - \mu_{z_i}}{\sqrt{2}\sigma_{z_i}} \right) \right] \quad (6)$$

describes the probability of z_i being smaller than x , so the likelihood of z_i being larger than zero is

$$\mathcal{L}_i(A, \Omega_p | \mu_{z_i}, \sigma_{z_i}) = 1 - F_i(0) = \frac{1}{2} \left[1 - \text{erf} \left(\frac{-\mu_{z_i}}{\sqrt{2}\sigma_{z_i}} \right) \right]. \quad (7)$$

The total likelihood of the metallicity to increase towards the resonance centre is then

$$\mathcal{L}(A, \Omega_p | \mu_z, \sigma_z) = \prod_i^N \mathcal{L}_i(A, \Omega_p | \mu_{z_i}, \sigma_{z_i}), \quad (8)$$

where $N \equiv (1 - \hat{J}_{\ell,\text{min}})/\Delta\hat{J}_\ell$ is the number of evaluation points in \hat{J}_ℓ . Since the number of samples drops towards small libration action, the lower limit $\hat{J}_{\ell,\text{min}}$ is fixed to 0.4 such that, for all bar parameters, each bin in \hat{J}_ℓ has more than 30 samples. We have confirmed that the

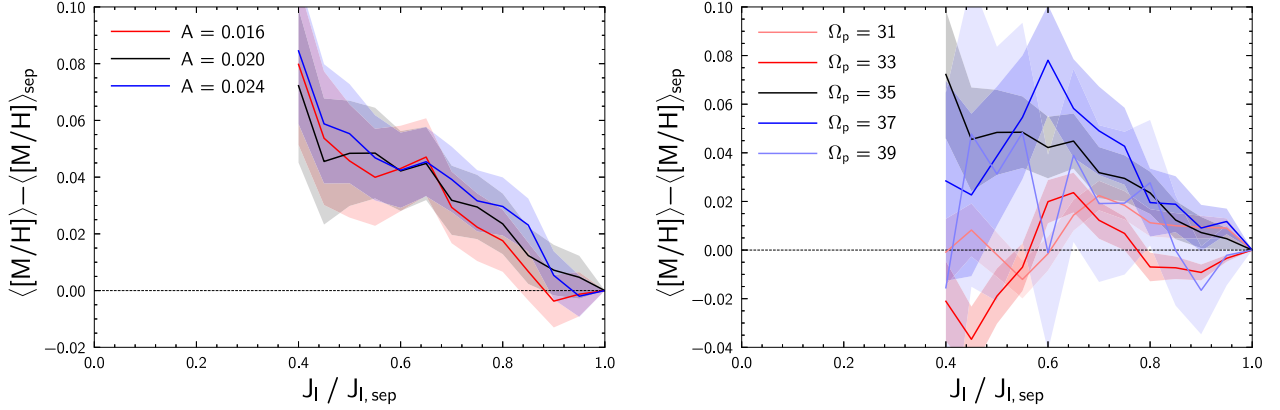


Figure 9. Variation of mean metallicity with \hat{J}_ℓ derived by integrating the metallicity gradient in \hat{J}_ℓ . Left-hand panel: Dependence on bar amplitude A at fixed pattern speed $\Omega_p = 35 \text{ km s}^{-1} \text{ kpc}^{-1}$. At all bar strength, the metallicity decreases monotonically from the centre of the resonance, indicating sequential occupation of the resonance from the core by stars from ever larger radii and thus at lower metallicities. This is the signature of outward migration of the resonance and thus the slow down of the bar. The coloured bands represent the uncertainties propagated from the 1 s.d. uncertainties of the mean metallicity gradient in \hat{J}_ℓ . Right-hand panel: Dependence on bar pattern speed Ω_p (units given in $\text{km s}^{-1} \text{ kpc}^{-1}$) at fixed bar strength $A = 0.02$. A monotonic trend is only seen with $\Omega_p = 35 \text{ km s}^{-1} \text{ kpc}^{-1}$ where the location of bar CR matches the Hercules stream.

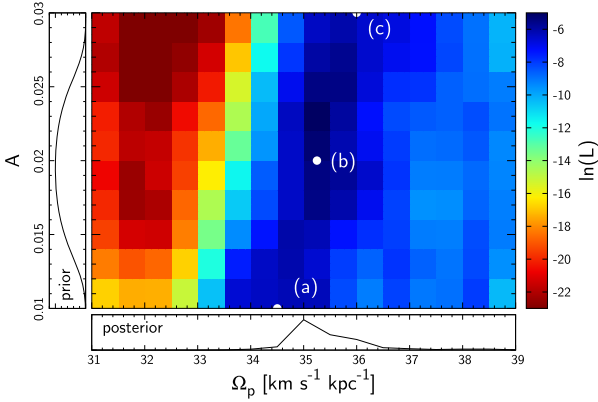


Figure 10. Likelihood (equation 8) of increase in mean metallicity towards the centre of the bar’s CR plotted over bar pattern speed Ω_p and bar strength A . From the prior distribution in A (left-hand panel) inferred from SBM15, we calculate the posterior distribution in Ω_p (bottom panel) which shows a peak at around $\Omega_p = 35\text{--}36 \text{ km s}^{-1} \text{ kpc}^{-1}$.

likelihood estimation of equation (8) is robust against the choice of $\Delta \hat{J}_\ell$ smaller than 0.1.

Fig. 10 shows the log-likelihood function of the monotonic increase. We observe an inclined peak which means that the faster the rotation of the bar (and thus the lower the location of the resonance in the velocity plane), the more strength (larger resonance size) is required for the metallicity to increase towards the core of the resonance. To have an intuitive understanding of why bar parameters along this inclination are favoured in our analysis, we show in Fig. 11 the configuration of the resonance in local velocity space for three bar parameters along the peak shown as white circles (a)–(c) in Fig. 10. From top to bottom, both Ω_p and A increase, i.e. the resonance shifts down but also inflates. Under such changes, the position of the upper separatrix of the CR is kept fixed just above the metal rich zone. As a consequence, for all three figures, the metallicity along constant J_R approximately peaks at points where \hat{J}_ℓ is the smallest, i.e. points where contours of J_R and \hat{J}_ℓ are tangent to one another, hence resulting in an overall monotonic increase of metallicity towards

small \hat{J}_ℓ . The results simply suggest that bar models with the upper boundary of the CR placed just above the Hercules stream is favoured, in agreement with prediction from kinematics.

From Fig. 10, we may constrain the bar pattern speed given the priors for the bar amplitude. As in Chiba et al. (2020), we infer the priors from the study of Sormani, Binney & Magorrian (2015, hereafter SBM15). The hydrodynamic simulation by SBM15 suggests that the observed longitude–velocity diagrams of CO and H_I are well reproduced with bar strengths in the range $A_s \in [0.4, 0.8]$ in their notation which translates to $A \in [0.013, 0.026]$ in our model if we fit our analytical bar model to their bar potential beyond half of the corotation radius where the local kinematics are affected by the bar. We assume a normal prior distribution in A with mean $\mu_A = 0.0195$, standard deviation $\sigma_A = 0.0065$, and a smooth cutoff given at $\mu_A \pm \sigma_A$;

$$P(A) \propto \frac{\exp(-x^2/2)}{\frac{1}{2}(\exp|x^k| + 1)}, \quad x \equiv \frac{A - \mu_A}{\sigma_A} \quad (9)$$

where k is the cutoff rate set to $k = 4$ as default. $P(A)$ is shown in the left-hand panel of Fig. 10. The posterior distribution in Ω_p is calculated by integrating $P(A)$ and $\mathcal{L}(A, \Omega_p)$ over A ;

$$P(\Omega_p) = \int_{A_{\min}}^{A_{\max}} dA P(A) \mathcal{L}(A, \Omega_p). \quad (10)$$

Fig. 10 bottom panel shows $P(\Omega_p)$ which takes mean $\langle \Omega_p \rangle = 35.5 \text{ km s}^{-1} \text{ kpc}^{-1}$, median $\hat{\Omega}_p = 35.0 \text{ km s}^{-1} \text{ kpc}^{-1}$, and standard deviation $\sigma_{\Omega_p} = 0.8 \text{ km s}^{-1} \text{ kpc}^{-1}$. This is in good agreement with Binney (2020b) who derived $\Omega_p = 36 \pm 1 \text{ Gyr}^{-1} = 35.2 \pm 1.0 \text{ km s}^{-1} \text{ kpc}^{-1}$ by applying Jean’s theorem to trapped orbits visiting the Sun. Since both studies reached the same conclusion using independent statistics, $\Omega_p = 35\text{--}36 \text{ km s}^{-1} \text{ kpc}^{-1}$ is reliably the optimal pattern speed for the Hercules stream to be composed of orbits trapped in the bar’s CR.

The pattern speed estimated in this work is slightly lower than recent estimations from stellar kinematics in the bar: both Sanders et al. (2019) and Bovy et al. (2019) estimated $\Omega_p = 41 \pm 3 \text{ km s}^{-1} \text{ kpc}^{-1}$ using the continuity equation. With these intermediate pattern speeds, the upper separatrix of the CR cuts or passes under the metal rich population in the local velocity plane and thus an alternative explana-

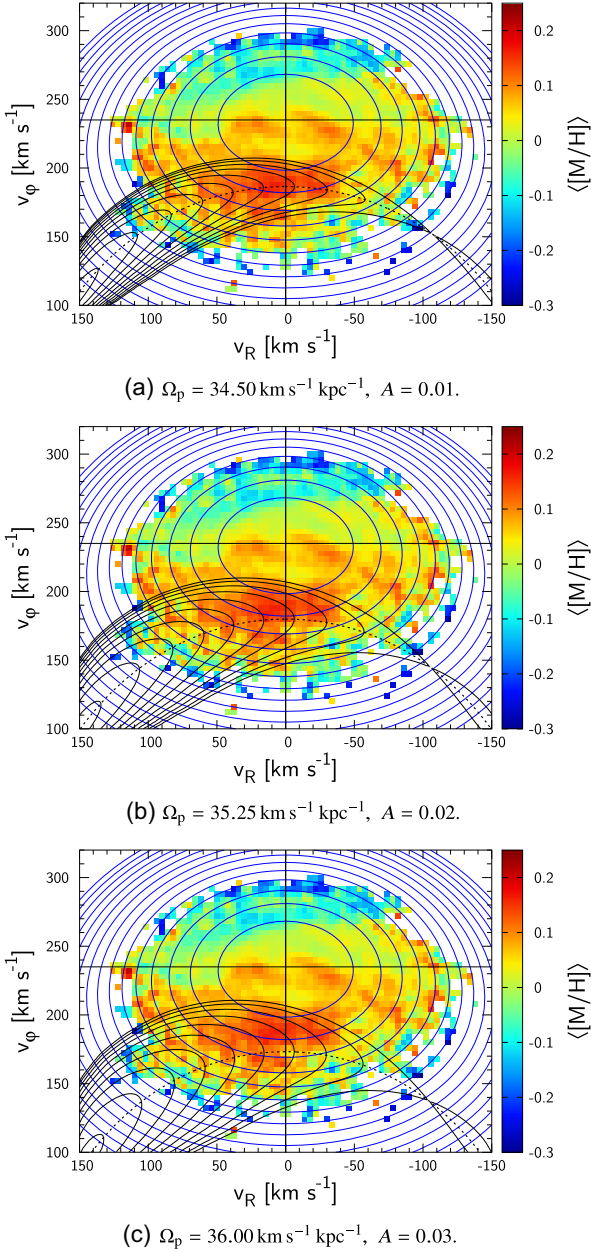


Figure 11. Mean metallicity in local velocity space superposed by contours of constant J_R (blue) and $J_\ell \equiv J_\ell/J_{\ell,\text{sep}}$ (black) for orbits trapped in the CR of the bar. All three figures (a)–(c) assume bar parameters (marked on Fig. 10 in white) which yield monotonic increase of metallicity towards small J_ℓ demanded from the slow down of the bar.

tion must be given to the metal rich population outside the bar’s CR. Portail et al. (2017) derived $\Omega_p = 39 \pm 3.5 \text{ km s}^{-1} \text{ kpc}^{-1}$ by fitting their dynamical models of the bar region to the density and kinematics of red clump giants using the made-to-measure method, and their models were further used by Clarke et al. (2019) to reproduce the integrated on-sky maps of the longitudinal proper motion which was best achieved at $\Omega_p = 37.5 \text{ km s}^{-1} \text{ kpc}^{-1}$ in close agreement with our estimation. We conjecture that the small discrepancy is partly due to the uncertainty in the bar strength but more dominantly caused by the difference in the underlying axisymmetric potential.

4.3 Quantifying systematic uncertainties

In the following, we discuss the systematic errors of our estimation: Including faint stars by extending the upper limit in *Gaia* magnitude from $G = 7$ to $G = 8$ has a negligible effect, unchanging the optimal bar pattern speed within the reported precision. Changing the age of the isochrone (default 4 Gyr) has a marginal impact: with age 6 Gyr we obtain $\Omega_p = 35.5 \pm 0.9 \text{ km s}^{-1} \text{ kpc}^{-1}$, while with age 2 Gyr we have $\Omega_p = 35.4 \pm 0.7 \text{ km s}^{-1} \text{ kpc}^{-1}$. Throughout our analysis, we have assumed the angle of bar major axis ϕ_b to be 30° ahead from the sun (Wegg et al. 2015). By varying the bar angle ϕ_b , we vary the distance from the sun to the centre of the bar’s CR, i.e. the stable Lagrange point. Therefore, varying the bar angle has an effect on local kinematics similar to varying the bar amplitude. With bar angle of $\phi_b = 35^\circ$, the optimal pattern speeds rise to $\Omega_p = 35.8 \pm 0.9 \text{ km s}^{-1} \text{ kpc}^{-1}$. Conversely, decreasing the bar angle to $\phi_b = 25^\circ$ lowers the best pattern speed down to $\Omega_p = 35.2 \pm 0.9 \text{ km s}^{-1} \text{ kpc}^{-1}$. We have also analysed the data using resonant actions evaluated in a slowing bar with slowing rate $\eta = 0.0036$ as constrained by Chiba et al. (2020). This yields $\Omega_p = 35.5 \pm 1.1 \text{ km s}^{-1} \text{ kpc}^{-1}$. The mean is unaffected since the deceleration does not change the location of the resonance, but the uncertainty increases since the resonance contracts reducing the effective sample size. Variation in the axisymmetric potential from a flat circular speed to a slightly inclined one $v_c(R) \equiv (R/R_0)^\beta v_c(R_0)$ has the largest impact changing the pattern speed to $\Omega_p = 34.5 \pm 1.1 \text{ km s}^{-1} \text{ kpc}^{-1}$ with $\beta = 0.1$ and $\Omega_p = 36.8 \pm 0.8 \text{ km s}^{-1} \text{ kpc}^{-1}$ with $\beta = -0.1$.

Finally, uncertainties in R_0 and v_c cannot be treated separately as our measurement to first order depends on the local angular frequency $\Omega_0 \equiv v_c/R_0$ which is constrained by the proper motion of Sagittarius A*, $\mu_{\ell,A^*} = (-6.411 \pm 0.008) \text{ mas yr}^{-1} = (30.391 \pm 0.038) \text{ km s}^{-1} \text{ kpc}^{-1}$ (Reid & Brunthaler 2020) through the relation $v_{\phi,\odot} = \mu_{\ell,A^*} R_0 = v_c + V_\odot$ and thus

$$\begin{aligned} \Omega_0 &= \mu_{\ell,A^*} - V_\odot/R_0 \\ &= 28.90 \pm 0.10 \text{ km s}^{-1} \text{ kpc}^{-1} \end{aligned} \quad (11)$$

where we take $R_0 = 8.18 \pm 0.02 \text{ kpc}$ (Gravity Collaboration 2019) and $V_\odot = 12.24 \pm 0.47 \text{ km s}^{-1}$ (Schönrich et al. 2010). There is a systematic uncertainty from wobbles of the black hole against the Galactic centre (Batcheldor et al. 2010) and wobbles of the nuclear region against the large-scale disc. These uncertainties amount to a few km s^{-1} peculiar motion of Sagittarius A* or vice versa a couple per cent in μ_{ℓ,A^*} . In this paper, we have assumed $\Omega_0 = v_c/R_0 = 235 \text{ km s}^{-1}/8.2 \text{ kpc} = 28.66 \text{ km s}^{-1} \text{ kpc}^{-1}$, so we may be underestimating the pattern speed by a factor of 0.992 which e.g. shifts our fiducial estimation up to $\Omega_p = 35.8 \pm 0.8 \text{ km s}^{-1} \text{ kpc}^{-1}$.

4.4 The relative pattern speed

Throughout the paper, we have referred to the Galactic bar as ‘slow’ in the sense that its pattern speed is $\Omega_p \lesssim 40 \text{ km s}^{-1} \text{ kpc}^{-1}$ as opposed to a ‘fast’ bar with $\Omega_p \gtrsim 50 \text{ km s}^{-1} \text{ kpc}^{-1}$. This slow/fast dichotomy based on the absolute pattern speed is not to be confused with the slow/fast classification based on the dimensionless ratio $\mathcal{R} \equiv R_{\text{CR}}/a_b$, where R_{CR} is the corotation radius and a_b is the apparent length of a bar in stellar density. When $1 < \mathcal{R} < 1.4$, the bar is classified as ‘fast’ (Athanasoula 1992; Debattista & Sellwood 2000; Athanasoula 2014). Most barred galaxies are found to possess a fast bar (Aguerre et al. 2015). Whether our Galactic bar is fast or slow in the latter sense depends on the measurement of the bar length. Wegg et al. (2015) fitted the observed red clump stars in the bar region with a parametrized density model and derived

$a_b = 5.0 \pm 0.2$ kpc. Adopting their upward revision of the bar length together with our estimation $R_{CR} = 6.2 \pm 0.2$ yields $\mathcal{R} = 1.3 \pm 0.1$ and thus makes our ‘slow’ pattern speed bar model a typical ‘fast bar’ in this classification.

5 CONCLUSIONS

We have shown that the resonances of a slowing bar develop like the rings on a growing tree: the distance of trapped orbits to the core of the resonance is adiabatically invariant (i.e. the libration action J_ℓ) and indicates the order of trapping. Since the volume of bar resonance is shown to grow while it sweeps outwards through the disc, newly trapped stars sequentially occupy the phase space near the expanding separatrix. Due to the Galaxy’s negative radial metallicity gradient, this pattern is directly observable as a monotonic increase of mean stellar metallicity from the surface towards the core of the resonance.

Using photometric metallicities and stellar kinematics from *Gaia* data, we have shown that the Hercules stream in the Solar Neighbourhood carries this signature. The data displays a highly significant and clean metallicity ordering within the Hercules stream, which we can only explain by identifying Hercules with the bar’s CR.

The metallicity ordering is only preserved with the correct current bar pattern speed Ω_p : The mapping from phase space to the libration action depends critically on Ω_p , and so the metallicity ordering in J_ℓ gets lost at even small changes of Ω_p . We showed that this tightly constrains the pattern speed to $\Omega_p = 35.5 \pm 0.8$ km s⁻¹ kpc⁻¹ and thus $R_{CR} = 6.6 \pm 0.2$ kpc, providing another key evidence for the slow bar theory. We stress that a fast bar which associates Hercules with the non-resonant orbits below the OLR is incompatible with the data since there are no viable mechanism that makes non-trapped orbits significantly metal rich. We further stress that any outer resonances with $N_R > 0$ cannot explain the metal-rich nature of Hercules since resonant dragging in angular momentum will be accompanied by an increase in radial action while the high metallicity stars of Hercules is observed even at low J_R . The significant metallicity rise also demands a long sweep in radius, which seems not feasible with a short-lived spiral pattern.

The overall increase in metallicity inside the resonance implies that the corotation radius of the bar must have moved more than 1.6 kpc outwards which corresponds to a decrease of pattern speed by at least 24 per cent since its formation. A more quantitative understanding on the evolutionary history of the Galactic bar can be gained in the future by fitting the full resonance structure with detailed chemo-dynamical models. Owing to the Sun’s position far from the stable Lagrange points, we currently see only the outer region of the resonance. By performing the analysis at a spatial coordinate closer to the Lagrange points, we could probe deeper into the inner region of the resonance, where we may find traces of events that happened in the early epoch of bar formation (e.g. vertical buckling), and also determine the size of the initial core of the resonance which stems from the formation of the bar. This will be possible in the future with extended data covering the full range of resonance and a proper chemo-dynamical model predicting the age-dependent effects, e.g. the flattening of the radial metallicity gradient towards higher ages by inside-out formation (e.g. Spagna et al. 2010; Schönrich & McMillan 2017). We identify further caveats pertaining to diffusion processes. We have not yet evaluated how precisely the structure of a bar-driven resonance will be modified by diffusion processes in phase space due to a variety of perturbations: spiral arms, giant molecular clouds, dwarf galaxy impacts, etc. A naive expectation is that this weakens the metallicity gradient along J_ℓ .

Adding to our previous arguments for a slowing Galactic bar purely based on kinematics, this work provides further evidence using photometry. Hence, our works support the existence of a standard dark-matter halo that has taken up angular momentum from the slowing bar. Alternative theories of gravity are disfavoured since they cannot explain the missing angular momentum (Ghafourian et al. 2020). Exotic dark matter in the form of degenerate quantum condensates (e.g. Goodman 2000; Hu, Barkana & Gruzinov 2000), recently favoured by virtue of preventing the formation of density cusps, must be tested for their degree of angular momentum exchange with the baryonic bar. Thus, the discovery of the deceleration of the bar provides a new testbed through which any successful dark-matter model must pass. The bar slow down also paves the path to a new class of constraints on the dark halo: The dynamical friction on the bar depends on both the dark halo’s density and kinematics, and thus in combination with standard maps of the gravitational potential, gives us access to measuring the dynamical properties of the dark halo (e.g. rotation).

ACKNOWLEDGEMENTS

We thank J. Binney, D. Kawata, M. Cropper, W. Dehnen, and members of the Oxford galactic dynamics group for valuable discussions. RC acknowledges financial support from the Takenaka Scholarship Foundation and the Royal Society grant RGF\R1\180095. RS is supported by a Royal Society University Research Fellowship. This work was performed using the Cambridge Service for Data Driven Discovery (CSD3), part of which is operated by the University of Cambridge Research Computing on behalf of the STFC DiRAC HPC Facility (www.dirac.ac.uk). The DiRAC component of CSD3 was funded by BEIS capital funding via STFC capital grants ST/P002307/1 and ST/R002452/1 and STFC operations grant ST/R00689X/1. DiRAC is part of the National e-Infrastructure. This work has made use of data from the European Space Agency (ESA) mission *Gaia* (<https://www.cosmos.esa.int/gaia>), processed by the *Gaia* Data Processing and Analysis Consortium (DPAC, <https://www.cosmos.esa.int/web/gaia/dpac/consortium>). Funding for the DPAC has been provided by national institutions, in particular the institutions participating in the *Gaia* Multilateral Agreement.

DATA AVAILABILITY

This study used the data from *Gaia* publicly available at <https://gea.esac.esa.int/archive>. The distances and parallax offsets for the *Gaia* sources are taken from Schönrich et al. (2019) and are available at <https://zenodo.org/record/2557803>. The isochrones used to estimate stellar metallicity are generated by PARSEC version 1.2S (Bressan et al. 2012) at <http://stev.oapd.inaf.it/cgi-bin/cmd>. The code used to compute the Galactic potential from McMillan (2017) is available at <https://github.com/PaulMcMillan-Astro/GalPot>. The codes used to perform the test particle simulations, to compute the angle-action coordinates, and to conduct the data analysis are available from the corresponding author upon request.

REFERENCES

- Aguerri J. A. L. et al., 2015, *A&A*, 576, A102
 Antoja T. et al., 2014, *A&A*, 563, A60
 Antoja T. et al., 2017, *A&A*, 601, A59
 Asano T., Fujii M. S., Baba J., Bédorf J., Sellentin E., Portegies Zwart S., 2020, *MNRAS*, 499, 2416
 Athanassoula E., 1992, *MNRAS*, 259, 345

Athanassoula E., 2003, *MNRAS*, 341, 1179
Athanassoula E., 2014, *MNRAS*, 438, L81
Batcheldor D., Robinson A., Axon D. J., Perlman E. S., Merritt D., 2010, *ApJ*, 717, L6
Binney J., 2020a, *MNRAS*, 495, 886
Binney J., 2020b, *MNRAS*, 495, 895
Binney J., Tremaine S., 2008, *Galactic Dynamics: Second Edition*. Princeton Univ. Press, Princeton, NJ
Bovy J., Hogg D. W., 2010, *ApJ*, 717, 617
Bovy J., Leung H. W., Hunt J. A. S., Mackereth J. T., García-Hernández D. A., Roman-Lopes A., 2019, *MNRAS*, 490, 4740
Bressan A., Marigo P., Girardi L., Salasnich B., Dal Cero C., Rubele S., Nanni A., 2012, *MNRAS*, 427, 127
Carrera R. et al., 2019, *A&A*, 623, A80
Casagrande L., Schönrich R., Asplund M., Cassisi S., Ramírez I., Meléndez J., Bensby T., Feltzing S., 2011, *A&A*, 530, A138
Chiba R., Friske J. K. S., Schönrich R., 2020, *MNRAS*, 500, 4710
Clarke J. P., Wegg C., Gerhard O., Smith L. C., Lucas P. W., Wylie S. M., 2019, *MNRAS*, 489, 3519
Collett J. L., Dutta S. N., Evans N. W., 1997, *MNRAS*, 285, 49
Cropper M. et al., 2018, *A&A*, 616, A5
D’Onghia E., L. Aguerri J. A., 2020, *ApJ*, 890, 117
Debattista V. P., Sellwood J. A., 2000, *ApJ*, 543, 704
Dehnen W., 1999, *ApJ*, 524, L35
Dehnen W., 2000, *AJ*, 119, 800
Fragkoudi F. et al., 2019, *MNRAS*, 488, 3324
Friske J. K. S., Schönrich R., 2019, *MNRAS*, 490, 5414
Gaia Collaboration, 2018, *A&A*, 616, A1
Ghafourian N., Roshan M., Abbassi S., 2020, *ApJ*, 895, 13
Goodman J., 2000, *New A*, 5, 103
Gravity Collaboration, 2019, *A&A*, 625, L10
Grenon M., 1972, in Cayrel de Strobel G., Delplace A. M., eds, *IAU Colloq. 17: Age des Etoiles*, Kluwer, Dordrech, p.55
Grenon M., 1999, in Spite M., ed., *Galaxy Evolution: Connecting the Distant Universe with the Local Fossil Record*. Kluwer, Dordrech, p. 331
Halle A., Di Matteo P., Haywood M., Combes F., 2018, *A&A*, 616, A86
Henrard J., 1982, *Celest. Mech.*, 27, 3
Hernquist L., Weinberg M. D., 1992, *ApJ*, 400, 80
Hu W., Barkana R., Gruzinov A., 2000, *Phys. Rev. Lett.*, 85, 1158
Hunt J. A. S., Bovy J., 2018, *MNRAS*, 477, 3945
Hunt J. A. S., Hong J., Bovy J., Kawata D., Grand R. J. J., 2018, *MNRAS*, 481, 3794
Joshi Y. C., 2007, *MNRAS*, 378, 768
Katz D. et al., 2019, *A&A*, 622, A205
Kushniruk I., Bensby T., Feltzing S., Sahlholdt C. L., Feuillet D., Casagrande L., 2020, *A&A*, 638, A154
Leaman R., 2012, *AJ*, 144, 183
Lichtenberg A., Lieberman M., 1992, *Regular and Chaotic Dynamics*. Springer-Verlag, Berlin
Luck R. E., 2018, *AJ*, 156, 171
McMillan P. J., 2017, *MNRAS*, 465, 76
Martinez-Valpuesta I., Shlosman I., Heller C., 2006, *ApJ*, 637, 214
Monari G., Famaey B., Siebert A., Wegg C., Gerhard O., 2019, *A&A*, 626, A41
Netopil M., Paunzen E., Heiter U., Soubiran C., 2016, *A&A*, 585, A150
Pérez-Villegas A., Portail M., Wegg C., Gerhard O., 2017, *ApJ*, 840, L2
Portail M., Gerhard O., Wegg C., Ness M., 2017, *MNRAS*, 465, 1621
Quinn D. D., Rand R. H., 1995, *Smart Structures, Nonlinear Dynamics, and Control*, Prentice Hall, New Jersey, p. 226
Reid M. J., Brunthaler A., 2020, *ApJ*, 892, 39
Reid M. J. et al., 2019, *ApJ*, 885, 131
Sanders J. L., Smith L., Evans N. W., 2019, *MNRAS*, 488, 4552
Sartoretti P. et al., 2018, *A&A*, 616, A6
Schönrich R., McMillan P. J., 2017, *MNRAS*, 467, 1154
Schönrich R., Binney J., Dehnen W., 2010, *MNRAS*, 403, 1829
Schönrich R., McMillan P., Eyer L., 2019, *MNRAS*, 487, 3568
Sellwood J. A., 2008, *ApJ*, 679, 379
Sormani M. C., Binney J., Magorrian J., 2015, *MNRAS*, 454, 1818

Spagna A., Lattanzi M. G., Re Fiorentin P., Smart R. L., 2010, *A&A*, 510, L4
Tremaine S., Weinberg M. D., 1984, *MNRAS*, 209, 729
Trick W. H., Fragkoudi F., Hunt J. A. S., Mackereth J. T., White S. D. M., 2021, *MNRAS*, 500, 2645
Wegg C., Gerhard O., Portail M., 2015, *MNRAS*, 450, 4050
Weiler M., 2018, *A&A*, 617, A138
Weinberg M. D., 1985, *MNRAS*, 213, 451
Weinberg M. D., 2004, preprint (astro-ph/0404169)
Weinberg M. D., Katz N., 2002, *ApJ*, 580, 627
Weinberg M. D., Katz N., 2007, *MNRAS*, 375, 425

APPENDIX A: MODEL

We model the Galaxy as a Mestel disc perturbed by a decelerating/elongating bar described by a quadrupole term:

$$\Phi(R, \varphi, t) = v_c^2 \ln(R) - \frac{Av_c^2}{m} \left[\frac{R}{R_{\text{CR}}(t)} \right]^2 \left[\frac{b+1}{b+R/R_{\text{CR}}(t)} \right]^5 \times \cos m \left[\varphi - \int_0^t dt' \Omega_p(t') \right], \quad (\text{A1})$$

where $v_c = 235 \text{ km s}^{-1}$ is the circular speed (Reid et al. 2019). The parameter A describes the strength of the bar (ratio between the maximum azimuthal force by the bar and the radial force due to the unperturbed potential at R_{CR}), and b is the ratio of the bar scale length to R_{CR} . The bar’s pattern speed $\Omega_p(t)$ is modelled to decrease inversely proportional to time corresponding to a linear increase in the corotation radius $R_{\text{CR}}(t) \equiv v_c/\Omega_p(t)$. The slowing rate of the bar is then conveniently described by a constant, dimensionless parameter $\eta \equiv -\dot{\Omega}_p/\Omega_p^2 = \dot{R}_{\text{CR}}/v_c$. Details on our model are described in Chiba et al. (2020).

APPENDIX B: CALCULATION OF LIBRATION ACTION

The motion of orbits trapped and dragged by a slowing bar is described to first order by a differential equation that represents a pendulum subject to a constant torque (Tremaine & Weinberg 1984; Chiba et al. 2020):

$$\ddot{\theta}_s + \omega^2 \left(\sin \theta_s - \frac{\eta}{A} \right) = 0, \quad (\text{B1})$$

where $\omega^2 \equiv -G\Psi$, $G \equiv \frac{\partial^2 H_0}{\partial J_s^2}$, and Ψ is the Fourier coefficient of the bar potential expanded in slow-fast angle variables (Chiba et al. 2020). Both G and Ψ are evaluated at the centre of the moving resonance $J_{s,\text{res}}(t)$. If the bar decelerates slowly such that the temporal change in $\omega(t)$ is negligibly slow compared to the evolution of θ_s , we may write

$$E_p = \frac{1}{2} \dot{\theta}_s^2 + V(\theta_s), \quad V(\theta_s) = \omega^2 \left(-\cos \theta_s - \frac{\eta}{A} \theta_s \right), \quad (\text{B2})$$

where $\dot{\theta}_s = G\Delta$ and $\Delta \equiv J_s - J_{s,\text{res}}$. As in the analogous case of a harmonic oscillator, E_p is not conserved under adiabatic/slow changes in ω , while the associated action of libration is approximately conserved:

$$J_\ell = \int_C \frac{d\theta_s}{2\pi} (\Delta_+ - \Delta_-) = \frac{1}{|G|} \int_C \frac{d\theta_s}{\pi} \sqrt{2[E_p - V(\theta_s)]}, \quad (\text{B3})$$

where Δ_\pm are the roots of the quadratic equation (B2) and the integral C runs from $-\pi$ to π wherever Δ_\pm is real. The maximum libration action is given by the minimum E_p necessary to reach the crest of

the potential (i.e. $\frac{dV}{d\theta_s}|_{\theta_{\text{sep}}} = 0$):

$$J_{\ell,\text{sep}} = \sqrt{\frac{2\Psi}{|G|} \int_C \frac{d\theta_s}{\pi} \sqrt{\cos\theta_s - \cos\theta_{s,\text{sep}} + \frac{\eta}{A} (\theta_s - \theta_{s,\text{sep}})}} \quad (\text{B4})$$

where $\theta_{s,\text{sep}} = \sin^{-1}(\eta/A)$, $\pi/2 \leq \theta_{s,\text{sep}} \leq \pi$. In the limit of epicycle approximation, Ψ and G scale as $\Psi \sim Av_c^2$ and $G \sim 1/R_{\text{CR}}^2 \sim \Omega_p^2/v_c^2$ (see appendix of Chiba et al. 2020), so $J_{\ell,\text{sep}} \sim \sqrt{A}v_c^2/\Omega_p$ which qualitatively explains the behaviour presented in Fig. 1. As shown in Fig. 3, equation (B4) successfully marks the phase-space boundary of trapped orbits integrated numerically. We note, however, that this closed curve is not strictly a separatrix. Since the parameter ω of the pendulum equation (B1) is time-dependent, the separatrix near the saddle point $\theta_{s,\text{sep}}$ is in fact broken (not closed) allowing orbits to enter or leave the resonance therefrom (Quinn & Rand 1995). In this paper, we will nevertheless refer to the phase curve drawn by equation (B4) as ‘separatrix’ since it marks the approximate phase-space area of orbits currently trapped in resonance. The separatrix of a resting resonance ($\eta = 0$, black dot-dashed) is also drawn in Fig. 3 for comparison. The deceleration of the bar has two notable consequences: the volume of resonant phase space shrinks, and the centre of the resonance shifts towards positive θ_s ; i.e. trapped orbits are azimuthally tilted when seen in the bar’s rotating frame (Chiba et al. 2020, fig. 16) which is simply the consequence of the Euler force. Fortunately, the Sun is rotating ahead of the corotating orbits, so the reduction of resonant volume in the Solar neighbourhood is relatively small (Fig. 3 right-hand panel). Chiba et al. (2020) gave estimates on the slowing rate as $\eta = 0.0036 \pm 0.0011$ by quantifying the asymmetry of the Hercules. In this paper, however, we use the libration action evaluated in a fixed pattern speed as default since the bar’s slowing rate contains large uncertainty propagated from the uncertainty in the bar strength. The effect of bar deceleration on the estimation of the pattern speed is examined and reported at the end of Section 4.2. We also checked that the first and second-order terms of the Taylor expansion of Ψ around the resonance, which we have neglected, barely affect the estimation of the pattern speed.

APPENDIX C: CAPTURE PROBABILITY

Here, we report on the capture rate of our slowing bar. Fig. C1 depicts the evolution of the contracted resonance with time (from left to right). As the resonance advances in J_s , the area of resonance grows (Section 2.2), so a fraction of stars above the resonance (region I) that encounter the separatrix may either be captured into the resonance

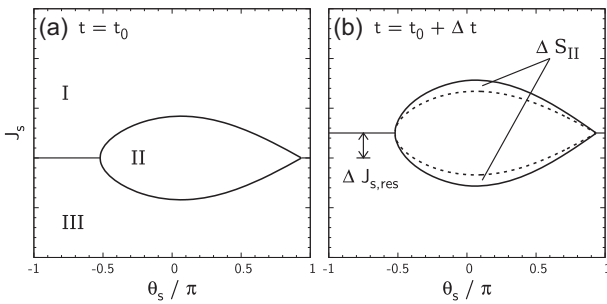


Figure C1. Schematic drawing of the evolution of a resonance. The phase space is split into three regime: the upper circulation regime (I), the libration regime (II), and the lower circulation regime (III). As time Δt passes (from left-hand panel to right-hand panel), the resonance moves up by $\Delta J_{s,\text{res}}$ and grows by $\Delta S_{\text{II}} = 2\pi \Delta J_{\ell,\text{sep}}$. The time variation of the phase-space area of the respective regions determines the capture rate (equation C1).

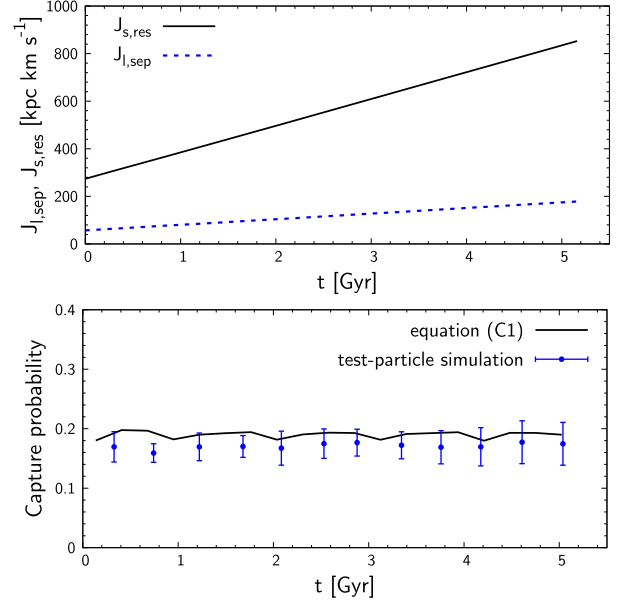


Figure C2. Upper panel: The time evolution of the CR’s location $J_{s,\text{res}}$ and its volume $J_{\ell,\text{sep}}$. Lower panel: The angle-averaged capture probability calculated analytically (black) and numerically (blue).

(region II) or transfer to the lower side (region III) depending on their incident phase. If we assume that trapped orbits always remain trapped as the resonance moves and grows [i.e. if the area enclosed by the dotted curve in Fig. C1 (b) is comprised of stars that occupied region II in Fig. C1 (a)], the capture probability $P_{\text{I} \rightarrow \text{II}}$ averaged over the phase can be calculated from the rate of change in the phase-space area of each region (Henrard 1982; Collett, Dutta & Evans 1997; Binney & Tremaine 2008, problem 3.43):

$$P_{\text{I} \rightarrow \text{II}} = \frac{dS_{\text{II}}}{-dS_{\text{I}}}, \quad P_{\text{I} \rightarrow \text{III}} = \frac{dS_{\text{III}}}{-dS_{\text{I}}}, \quad P_{\text{I} \rightarrow \text{II}} + P_{\text{I} \rightarrow \text{III}} = 1, \quad (\text{C1})$$

where $S_{\text{I,II,III}}$ are the phase-space area of region I, II, and III, respectively, which change according to

$$\frac{dS_{\text{I}}}{dt} = -\frac{1}{2} \frac{dS_{\text{II}}}{dt} - 2\pi \frac{dJ_{s,\text{res}}}{dt}, \quad (\text{C2})$$

$$\frac{dS_{\text{II}}}{dt} = 2\pi \frac{dJ_{\ell,\text{sep}}}{dt}, \quad (\text{C3})$$

$$\frac{dS_{\text{III}}}{dt} = -\frac{1}{2} \frac{dS_{\text{II}}}{dt} + 2\pi \frac{dJ_{s,\text{res}}}{dt}, \quad (\text{C4})$$

and are conserved in total

$$\frac{dS_{\text{I}}}{dt} + \frac{dS_{\text{II}}}{dt} + \frac{dS_{\text{III}}}{dt} = 0. \quad (\text{C5})$$

The capture probability is determined by two factors: how fast the resonance sweeps $dJ_{s,\text{res}}/dt$ and how fast it grows in volume $dJ_{\ell,\text{sep}}/dt$. Fig. C2 top panel shows the time evolution of $J_{s,\text{res}}$ and $J_{\ell,\text{sep}}$ at the CR of our slowing/elongating bar model. As in the simulation shown in Fig. 3, the bar amplitude A is kept constant and the fast action is $J_f = 10 \text{ kpc km s}^{-1}$. Since the corotation radius R_{CR} of our bar is modelled to expand linearly with time (Appendix A), both $J_{s,\text{res}}$ and $J_{\ell,\text{sep}}$ are linear as they scale according to $J_{s,\text{res}} \sim v_c R_{\text{CR}}$, $J_{\ell,\text{sep}} \sim \sqrt{\Psi/|G|} \sim \sqrt{A}v_c R_{\text{CR}}$. Consequently, the capture probability, shown in the bottom panel of Fig. C2 (black curve), is roughly constant around 0.2. We also calculated the capture rate using test-particle

simulation where we place 10^4 stars with identical initial actions just above the resonance ($J_{s0} = \zeta J_{s,\text{res}}$, $\zeta > 1$) but with random angles, and judge capture if J_s increase by a factor of more than 1.2 from the initial value (see Chiba et al. 2020 section 4.2 for detail). It is self-evident that our measurement is affected by the higher-order resonances which pass the stars before the CR. These resonances take a comparably small phase-space volume that they are still able to temporarily capture and sweep some stars as well as they might bias the angle distribution of stars interacting with the CR. We ascertained that the capture probability to the CR indeed depends at the 20 per cent level on the chosen initial position parametrized by ζ . Thus, we conduct the measurement with $\zeta = 1.15, 1.20, 1.25, 1.30$ and take the mean value. The numerical result (blue), which is plotted at the time when the resonance passes J_{s0} , is slightly lower than the analytical estimation (black) but reassures the qualitatively behaviour. The overestimation of our analytical approach is most likely due to the assumption that all trapped stars remain trapped as the resonance moves/grows which is invalid at the separatrix where the libration period diverges and thus allows orbits to escape from the moving resonance despite the growth in volume.

APPENDIX D: UNCERTAINTY IN LIBRATION ACTION

It is important to check that the uncertainty of the libration action $\hat{J}_\ell \equiv J_\ell/J_{\ell,\text{sep}}$ arising from the uncertainties in the *Gaia* data is sufficiently smaller than the scale of \hat{J}_ℓ at which we are looking. To quantify the uncertainty in \hat{J}_ℓ , we prescribe a Gaussian distribution for *Gaia* parallax p , proper motions μ_l, μ_b , and line-of-sight velocity v_{los} using the reported errors, and estimate the uncertainty by Monte Carlo method with 1000 realization for each star. Fig. D1 upper panel plots the mean uncertainty of \hat{J}_ℓ over the velocity space. *Gaia*'s observational errors enter velocity space almost linearly, so the uncertainty in \hat{J}_ℓ is largest where the gradient of \hat{J}_ℓ in velocity space is steepest. Since the contours of \hat{J}_ℓ are calculated using the position

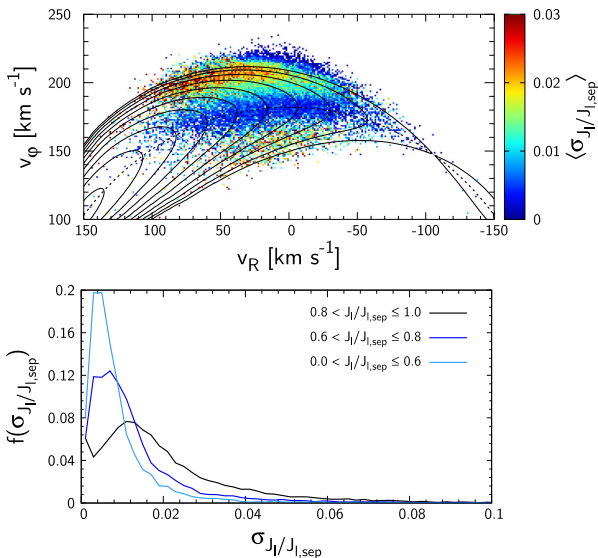


Figure D1. Upper panel: Mean uncertainty of \hat{J}_ℓ measurement due to *Gaia* errors. The uncertainty follows the gradient of \hat{J}_ℓ . Lower panel: The distribution of uncertainty in \hat{J}_ℓ . For the majority of stars, the uncertainty is of the order of 0.01 which is sufficiently smaller than the range of \hat{J}_ℓ over which we measure the metallicity trend.

of the Sun, some local stars relatively far from the Sun (at most 0.3 kpc) appear beyond the separatrix. Fig. D1 lower panel shows the distribution of the uncertainty for three regions of the resonance: the inner region ($0 < \hat{J}_\ell < 0.6$, light blue), the intermediate region ($0.6 < \hat{J}_\ell < 0.8$, blue), and near the separatrix ($0.8 < \hat{J}_\ell < 1$, black). The uncertainty becomes larger towards the separatrix, although for the vast majority of stars it is only a few per cent, so more than an order of magnitude smaller than the range in \hat{J}_ℓ across which we have shown the monotonic metallicity increase.

APPENDIX E: MODEL OF LOCAL METALLICITY

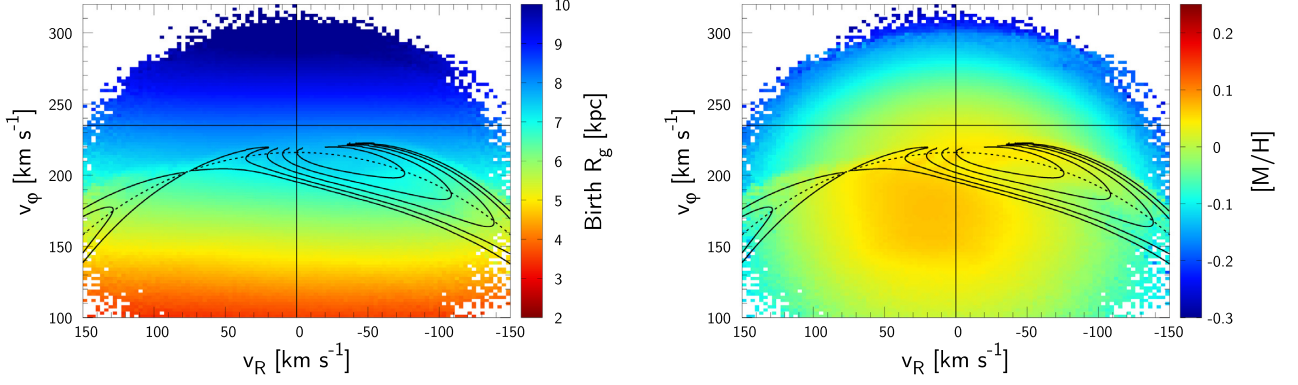
Modelling the local metallicity distribution is an involved task requiring a chemo-dynamical model that deals with the age–dispersion relation, the variation of the radial metallicity gradient with age, and radial mixing of stars, all of which is non-trivial and is thus beyond the scope of this paper. Here, we just provide a rough guidance on how the different bar models would translate into an observable metallicity distribution.

As evident from the data, both the age–metallicity and the age–velocity dispersion relationships combine into a negative metallicity gradient towards larger radial action which is superpositioned to the J_ϕ dependence resulting from the radial metallicity gradient. We fit this metallicity– J_R relationship linearly to roughly cover this effect: $d[M/H]/dJ_R = -0.00078 \text{ dex kpc}^{-1} \text{ km}^{-1} \text{ s}$. This relation is then applied to the original J_R of the test particles together with the radial metallicity gradient -0.05 dex/kpc (Luck 2018) applied to the birth R_g (i.e. original L_z).

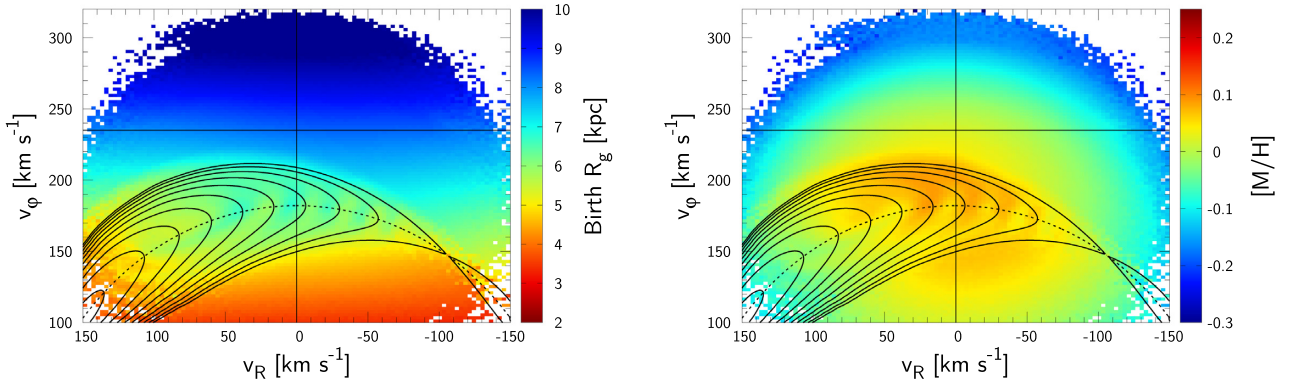
Fig. E1 displays the birth guiding radius (left column) and the corresponding metallicity (right column) of three different bar models. The top panels show the previously favoured fast bar model with pattern speed $\Omega_p = 53 \text{ km s}^{-1} \text{ kpc}^{-1}$ (Dehnen 1999). The OLR is located above the Hercules stream and the non-resonant x_2 orbits below the OLR constitute the Hercules. The contours of \hat{J}_ℓ are broken at small J_R due to the failure of the pendulum formalism at the Lindblad resonances where trapped stars are modeled to librate down to negative J_R , although this problem could be resolved by appropriate coordinate transformation (Binney 2020a). As demonstrated by Antoja et al. (2017), the left-hand panel shows that the non-trapped stars at the position of Hercules originate from smaller radii than the OLR stars with similar v_ϕ . Note that Antoja et al. (2017) plotted the current mean radius of the stars whereas our plot depicts the original guiding radius which is the relevant quantity for assessing the metallicity gradient. As can be seen from our plots, the difference in the original R_g is too small such that, when the simple metallicity–age–dispersion relation is applied, the metallicity at Hercules is only 0.05 dex larger than that at the LSR while the data show a difference of more than $\Delta[M/H] > 0.2 \text{ dex}$ (Fig. 6).

The middle panels show the slow bar model with constant pattern speed. The Hercules is now associated with orbits trapped in the CR that have a larger range of radial oscillation compared to non-trapped orbits, resulting in a slightly higher metallicity than the fast bar model. However, the predicted metallicity remains below the level of the data. Note the stripes along the contours of libration action arising from the incomplete phase mixing inside the resonance (even though we have run the simulation for 12 Gyr).

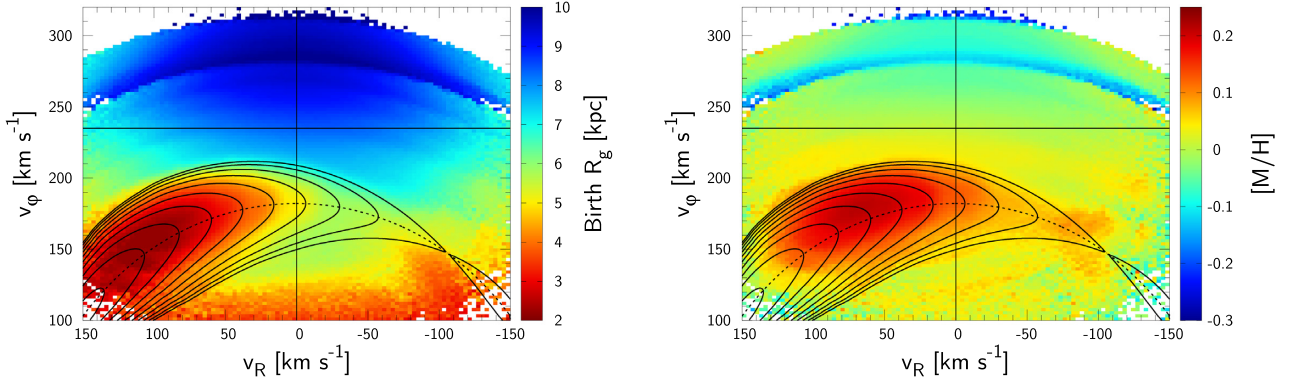
The bottom panels show the decelerating slow bar model which we have elaborated on in the main text (Section 2.3). The slow down of the bar brings trapped stars from far inside the disc ($\sim 3 \text{ kpc}$) that could potentially have metallicity as high as 0.2 dex in agreement



(a) Constant fast bar ($\eta = 0$, $\Omega_p = 53 \text{ km s}^{-1} \text{ kpc}^{-1} = 1.85\Omega_0$).



(b) Constant slow bar ($\eta = 0$, $\Omega_p = 35 \text{ km s}^{-1} \text{ kpc}^{-1} = 1.22\Omega_0$).



(c) Decelerating slow bar ($\eta = 0.004$, $\Omega_p = 35 \text{ km s}^{-1} \text{ kpc}^{-1} = 1.22\Omega_0$).

Figure E1. The birth guiding radius (left column) and the estimated local metallicity (right column) for three bar models. Top panels: a constant fast bar ($\Omega_p = 53 \text{ km s}^{-1} \text{ kpc}^{-1} = 1.85\Omega_0$). Middle panels: a constant slow bar ($\Omega_p = 35 \text{ km s}^{-1} \text{ kpc}^{-1} = 1.22\Omega_0$). Bottom panels: a decelerating slow bar.

with data. The metallicity- \hat{J}_ℓ relation of our models is shown in Fig. E2. The slowing bar (black) exhibits a profound linear increase in metallicity towards the resonance centre up to the initial core ($\hat{J}_\ell \lesssim 0.3$) within which the metallicity is flat as expected. The steady bar (blue) shows no significant rise in metallicity. The result thus corroborates our argument that the observed uptrend in metallicity manifests the deceleration of the bar. We stress though that this is a mere order of magnitude estimation and that many important galactic

evolution processes have been ignored, in particular the change in the radial metallicity gradient with time and position as a result of inside-out formation (e.g. Spagna et al. 2010; Schönrich & McMillan 2017). Naively, this inside-out signature should flatten or even invert the J_ϕ -metallicity relationship for old stars (large J_R) and thus reduce the metallicity contrast between the CR and the surrounding non-resonant stars at very large J_R . A quantitative prediction must await a proper chemo-dynamical model that fully considers these effects.

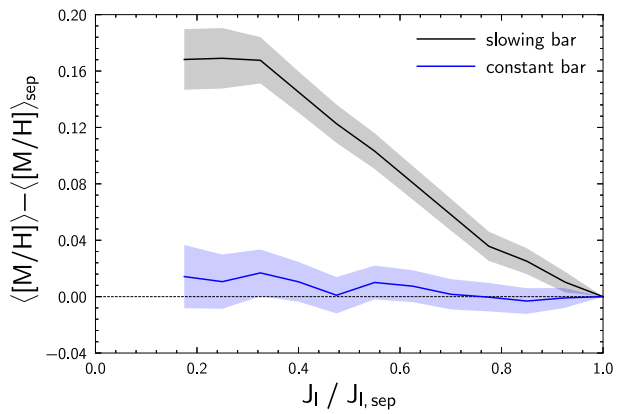


Figure E2. Prediction of mean metallicity $[M/H]$ inside the resonance using mock data generated from test-particle simulation. Increase in $[M/H]$ towards small \hat{J}_ℓ exclusively happens in the slowing bar model, while there is no appreciable rise in the corresponding model with a constant bar pattern speed.

This paper has been typeset from a $\text{\TeX}/\text{\LaTeX}$ file prepared by the author.