

# The SAMI Galaxy Survey: the low-redshift stellar mass Tully–Fisher relation

J. V. Bloom,<sup>1,2★</sup> S. M. Croom,<sup>1,2</sup> J. J. Bryant,<sup>1,2,3</sup> J. R. Callingham,<sup>1,2,4</sup>  
 A. L. Schaefer,<sup>1,2,3</sup> L. Cortese,<sup>5</sup> A. M. Hopkins,<sup>3</sup> F. D’Eugenio,<sup>6</sup> N. Scott,<sup>1,2</sup>  
 K. Glazebrook,<sup>7</sup> C. Tonini,<sup>7</sup> R. E. McElroy,<sup>1,2</sup> H. A. Clark,<sup>1</sup> B. Catinella,<sup>5</sup> J. T. Allen,<sup>1</sup>  
 J. Bland-Hawthorn,<sup>1</sup> M. Goodwin,<sup>3</sup> A. W. Green,<sup>3</sup> I. S. Konstantopoulos,<sup>8</sup>  
 J. Lawrence,<sup>3</sup> N. Lorente,<sup>3</sup> A. M. Medling,<sup>6,9</sup> M. S. Owers,<sup>2,10</sup> S. N. Richards<sup>1,2,3</sup>  
 and R. Sharp<sup>6</sup>

<sup>1</sup>*Sydney Institute for Astronomy, School of Physics, University of Sydney, NSW 2006, Australia*

<sup>2</sup>*CAASTRO: ARC Centre of Excellence for All-sky Astrophysics*

<sup>3</sup>*Australian Astronomical Observatory (AAO), 105 Delhi Rd, North Ryde, NSW 2113, Australia*

<sup>4</sup>*CSIRO Astronomy & Space Science, PO Box 76, Epping, NSW 1710, Australia*

<sup>5</sup>*International Centre for Radio Astronomy Research, University of Western Australia, 35 Stirling Highway, WA 6009, Australia*

<sup>6</sup>*Research School of Astronomy and Astrophysics, Australian National University, Canberra, ACT 2611, Australia*

<sup>7</sup>*Centre for Astrophysics and Supercomputing, Swinburne University of Technology, PO Box 218, Hawthorn, VIC 3122, Australia*

<sup>8</sup>*Atlassian, 341 George St, Sydney, NSW 2000, Australia*

<sup>9</sup>*Cahill Center for Astronomy and Astrophysics, California Institute of Technology, MS 249-17, Pasadena, CA 91125, USA*

<sup>10</sup>*Department of Physics and Astronomy, Macquarie University, NSW 2109, Australia*

Accepted 2017 July 4. Received 2017 July 4; in original form 2017 May 5

## ABSTRACT

We investigate the Tully–Fisher relation (TFR) for a morphologically and kinematically diverse sample of galaxies from the Sydney-AAO Multi-object Integral field spectrograph (SAMI) Galaxy Survey using two-dimensional spatially resolved  $H\alpha$  velocity maps and find a well-defined relation across the stellar mass range of  $8.0 < \log(M_*/M_\odot) < 11.5$ . We use an adaptation of kinemetry to parametrize the kinematic  $H\alpha$  asymmetry of all galaxies in the sample, and find a correlation between scatter (i.e. residuals off the TFR) and asymmetry. This effect is pronounced at low stellar mass, corresponding to the inverse relationship between stellar mass and kinematic asymmetry found in previous work. For galaxies with  $\log(M_*/M_\odot) < 9.5$ ,  $25 \pm 3$  per cent are scattered below the root mean square (RMS) of the TFR, whereas for galaxies with  $\log(M_*/M_\odot) > 9.5$  the fraction is  $10 \pm 1$  per cent. We use ‘simulated slits’ to directly compare our results with those from long slit spectroscopy and find that aligning slits with the photometric, rather than the kinematic, position angle, increases global scatter below the TFR. Further, kinematic asymmetry is correlated with misalignment between the photometric and kinematic position angles. This work demonstrates the value of 2D spatially resolved kinematics for accurate TFR studies; integral field spectroscopy reduces the underestimation of rotation velocity that can occur from slit positioning off the kinematic axis.

**Key words:** techniques: imaging spectroscopy – galaxies: evolution – galaxies: kinematics and dynamics – galaxies: structure.

## 1 INTRODUCTION

The Tully–Fisher relation (TFR) (Tully & Fisher 1977) is the fundamental scaling relation between stellar mass (McGaugh et al. 2000) (originally luminosity) and rotation velocity. It has been shown to

hold consistently in the nearby universe for regular disc galaxies [e.g. Bell & de Jong 2001; Kassin et al. 2006]. The traditional use of the TFR has been as a distance indicator, via the establishment of the tightest possible scaling relation. This usage requires the exclusion of galaxies outside limited morphology ranges, or that show signs of interaction (e.g. Pierce & Tully 1992; Bureau, Mould & Staveley-Smith 1996; Giovanelli et al. 1997; Haynes et al. 1999; Tully & Pierce 2000).

\* E-mail: [jessica.bloom@sydney.edu.au](mailto:jessica.bloom@sydney.edu.au)

Scatter below the TFR has been linked to low stellar mass and perturbation using a variety of methods, including optical rotation curves (Barton et al. 2001; Kannappan, Fabricant & Franx 2002) and integral field spectroscopy (IFS; Cortese et al. 2014). In previous work, we found an inverse relationship between stellar mass and kinematic asymmetry for galaxies in the Sydney-AAO Multi-object Integral field spectrograph (SAMI) Galaxy Survey sample (Bloom et al. 2017). This result was in agreement with other work, using a variety of metrics for disturbance (e.g. van Zee, Skillman & Salzer 1998; Cannon et al. 2004; Lelli, Verheijen & Fraternali 2014), demonstrating that low stellar mass galaxies have complex kinematics, deviating from ordered rotation. Rotation curve measurements of kinematic asymmetry (Barton et al. 2001; Garrido et al. 2005) found dwarf galaxies to be both disordered and to have low measured rotational velocity. It is also well known that stellar mass is linked to morphological type, with low-mass galaxies tending to have irregular morphologies (Roberts & Haynes 1994; Mahajan et al. 2015).

In the past, spectroscopic measurements were mostly taken using a single fibre or slit (York et al. 2000; Percival et al. 2001; Driver et al. 2009). There have been extensive TFR studies with single slit and fibre measurements (Tully & Fisher 1977; Courteau 1997; Böhm et al. 2004; Mocz et al. 2012, and others). Despite the success of fibre and slit-based measurements in determining the TFR, they are vulnerable to potential errors introduced by slit placement (Spekkens, Giovanelli & Haynes 2005; Oh et al. 2011; Simons et al. 2015) and aperture effects. It is also difficult to investigate spatial variation across an extended source using a single slit. Two-dimensional spatially resolved kinematics provides a means to circumvent this problem, allowing for greater robustness in kinematic measurements. SAMI is a multiplexed integral field spectrograph, enabling the production of sample sizes of the order of thousands of galaxies on a much shorter time-scale than would be possible with a single integral field spectrograph (Croom et al. 2012).

Two-dimensional spatially resolved spectroscopy has been used to explore the TFR in a variety of ways. The *K*-band Multi-Object Spectrograph (KMOS) Redshift One Spectroscopic Survey (KROSS) use spatially resolved  $H\alpha$  emission to study evolution of the  $M_*/M_\odot$  TFR to  $z \sim 1$  (Tiley et al. 2016). At low redshift, Davis et al. (2011) use the ATLAS<sup>3D</sup> sample to show the carbon monoxide (CO) TFR for early-type galaxies. Recently, the CALIFA Survey have produced a TFR at low redshift using rotation curve fitting to stellar velocity fields (Bekeraite et al. 2016). The  $H I$  TFR has also been thoroughly studied using kinematic maps (e.g. Begum et al. 2008; Stark, McGaugh & Swaters 2009; Trachternach et al. 2009; Oh et al. 2011).

In this work, we show the stellar mass TFR for galaxies in the SAMI Galaxy Survey Sample, and highlight trends with asymmetry and stellar mass. Section 2 details the sample selection, instrumentation, data reduction and methods. Section 3 presents the TFR for our sample and gives the main relationships between stellar mass, kinematic asymmetry and scatter off the TFR and Section 4 explores the physical and observational causes for scatter below the TFR. We conclude in Section 5. We assume a standard cosmology, with  $\Omega_m = 0.3$ ,  $\Omega_\lambda = 0.7$  and  $H_0 = 70 \text{ km s}^{-1} \text{ Mpc}^{-1}$ .

## 2 SAMPLE AND METHODS

### 2.1 The SAMI instrument and SAMI Galaxy Survey Sample

The SAMI instrument uses imaging fibre bundles or hexabundles (Bland-Hawthorn et al. 2011; Bryant et al. 2014), to take simul-

taneous integral field spectra for multiple objects. 61 optical fibres comprise each SAMI hexabundle, with each core subtending  $\sim 1.6$  arcsec on sky, yielding a total bundle diameter of 15 arcsec. 13 hexabundles can be used simultaneously on sky – 12 on galaxies and 1 on a standard star. The instrument is installed at the prime focus of the Anglo-Australian Telescope (AAT), with fibre cables feeding the double-beamed AAOmega spectrograph (Sharp et al. 2006; Croom et al. 2012).

The 3400 galaxies in the SAMI Galaxy Survey sample were selected from those in the GAMA survey (Driver et al. 2009), with the addition of eight galaxy clusters (Owers et al., in preparation). The galaxies selected from GAMA sample a broad range in stellar mass and environment density. The final SAMI Galaxy Survey sample consists of four stellar masses, volume-limited sub-samples, supplemented by additional low mass and filler samples as detailed in Bryant et al. (2015).

The SAMI Galaxy Survey data reduction pipeline produces data cubes for each galaxy with adequate signal to noise. For a full description of the SAMI Galaxy Survey data reduction pipeline, we refer the reader to Sharp et al. (2015). For the early SAMI data release, see Allen et al. (2015), and for the upcoming full first data release, see Green et al. (in preparation).

This work builds on that in Bloom et al. (2017), and uses similar data products from the SAMI Galaxy Survey including spectral fits using LZIFU. LZIFU is a spectral fitting pipeline written in interactive data language (IDL) that performs flexible emission line fitting of IFS data cubes. The LZIFU pipeline produces 2D emission line strength and kinematic maps for user-assigned lines. For a more detailed explanation of the LZIFU pipeline, see Ho et al. (2016).

At the start of this work, 827 galaxies had been observed and processed through the LZIFU pipeline. In previous work, we used an  $H\alpha$  signal to noise (S/N) cut of 10 to exclude noisy spaxels from the velocity field output by LZIFU. Here, we relax the S/N cut to 6, in order to increase the size of the sample. The median velocity error did not increase, and the decrease in mean spaxel S/N, from  $56.4 \pm 0.1$  to  $48.6 \pm 0.1$  was deemed to be acceptably small. It was thus found that this increased the number of galaxies in the sample without compromising data quality. 813 galaxies met the S/N cut requirements and yielded results from kinometry, a 230 percent increase on the sample size in Bloom et al. (2017). As in Bloom et al. (2017) the  $H\alpha$  S/N cut resulted in a sample with a broad range of morphological types, but a bias towards late-type galaxies.

### 2.2 TFR and asymmetry measurements

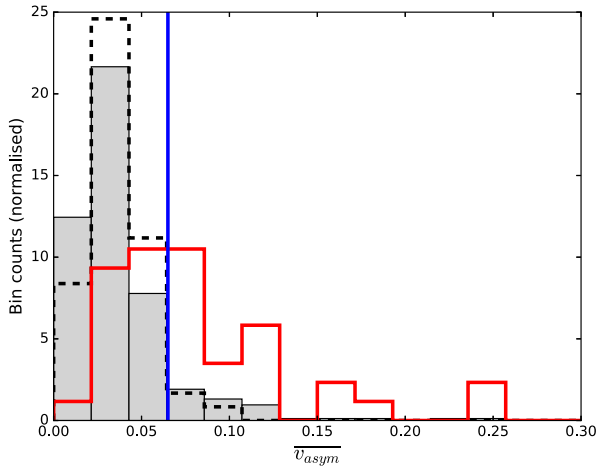
#### 2.2.1 Stellar mass

The stellar mass measurements are from the GAMA Survey catalogue StellarMasses (Taylor et al. 2011), and are based on *ugriz* SEDs constructed from matched aperture photometry. Typical errors on individual stellar mass values are 0.1 dex. This is an internal error to our data set and does not account for systematic offsets in stellar mass measures between our data and other papers that adopt different methods of stellar mass estimation, potentially using different model stellar populations.

#### 2.2.2 Inclination

In order to correct for velocity projection, we calculate galaxy inclination such that

$$\cos^2(i) = \frac{(1 - \eta)^2 - (1 - \eta_{\max})^2}{1 - (1 - \eta_{\max})^2}, \quad (1)$$



**Figure 1.** Histogram of  $\overline{v_{\text{asym}}}$  for the full sample in this work (grey), galaxies visually classified as normal (black, dashed) and perturbed (red) in previous work. The asymmetry cut-off from Bloom et al. (2017) is shown in blue, for reference. Visually asymmetric and normal galaxies are seen to have distinct distributions of  $\overline{v_{\text{asym}}}$ .

where  $i$  is the angle of inclination,  $\eta$  is the ellipticity and  $\eta_{\text{max}} = 0.8$  is taken as the ellipticity exhibited by an edge-on disc. Ellipticities are calculated using 400 arcsec  $r$ -band cutout image from the Sloan Digital Sky Survey (SDSS). The input image is processed with `SEXTRACTOR` (Bertin & Arnouts 1996) to mask out neighbouring objects. `PSFEX` (Bertin 2011) is used to build a model point spread function (PSF) at the location of the galaxy centre. The ellipticity is then found as a light-weighted mean for the whole galaxy, using the Multi-Gaussian Expansion (MGE) technique (Emsellem, Monnet & Bacon 1994) and code from Cappellari (2002). For more detail, we refer to D’Eugenio et al. (in preparation).

### 2.2.3 Kinemetry

Kinemetry is an extension of photometry to the higher order moments of the line of sight velocity distribution (LOSVD).<sup>1</sup> It was developed as a means to quantify asymmetries in stellar velocity (and velocity dispersion) maps. Such anomalies may be caused by internal disturbances or by external factors, namely interactions (Krajnović et al. 2006).

In Bloom et al. (2017), we defined a quantitative asymmetry measure,  $\overline{v_{\text{asym}}}$ , derived from kinemetry (Krajnović et al. 2006) and justified by a thorough by-eye classification based on SDSS imaging. Fig. 1 shows  $\overline{v_{\text{asym}}}$  for the full sample in this work (grey), galaxies visually classified as normal (black, dashed) and perturbed (red) in Bloom et al. (2017). Visually asymmetric and normal galaxies are seen to have distinct distributions of  $\overline{v_{\text{asym}}}$ .

The kinemetry algorithm fits a series of regularly spaced, concentric ellipses, from which radial moment values are taken. The ellipses are fitted with parameters defined by the galaxy centre, kinematic position angle (PA) and photometric ellipticity. We note a change from Bloom et al. (2017), in which we used the photometric PA. The ellipticity is taken from MGE fitting, as described in Section 2.2.2. The kinematic PA is calculated by the `FIT_KINEMATIC_PA` routine from Krajnović et al. (2006). We use the photometric centre to define the centre of the fitted ellipses.

<sup>1</sup> The kinemetry code is written in IDL, and can be found at <http://davor.krajnovic.org/idl/> (Krajnović et al. 2006).

We fit a two-dimensional Gaussian to the SAMI Galaxy Survey  $r$ -band continuum flux maps and took the centroid of the location of the 25 brightest spaxels in a  $6 \times 6$  pixel area around the centre of the fitted Gaussian. We did not use the  $H\alpha$  emission maps because they contain clumps of star formation and other features, which make determining the centre from these maps potentially unreliable.

The combination of the fitted ellipses is used to construct individual moment maps. As defined in Bloom et al. (2017), following Shapiro et al. (2008), the quantitative measure of kinematic asymmetry is found as the median asymmetry over the radii of the fitted ellipses from kinemetry:

$$\overline{v_{\text{asym}}} = \left( \frac{k3 + k5}{2k1} \right), \quad (2)$$

where  $k1, k3$  and  $k5$  are the coefficients of the Fourier decomposition of the first, third and fifth order moments of the LOSVD, respectively. Regular rotation is carried in the  $k1$  term, and asymmetry in the higher order terms. That is, a perfect disc with entirely regular rotation would have no power in the higher order terms, but would be completely represented by  $k1$ . We do not include  $k0, k2$  or  $k4$  as these terms are used for studying the velocity dispersion map. For a full explanation of our use of kinemetry, see Bloom et al. (2017).

Fig. 2 shows inclination correction against  $\overline{k1}$  and  $\overline{k3 + k5}$  with points coloured by stellar mass. As expected,  $\overline{k1}$  and inclination correction are correlated with a Spearman rank correlation test giving  $\rho = 0.2$  and a probability of no correlation  $p = 9.2 \times 10^{-8}$ . Similarly,  $\overline{k3 + k5}$  and inclination correction have correlation coefficients  $\rho = 0.2, p = 3.4 \times 10^{-8}$ . If perturbations are randomly oriented with respect to the disc, for example due to turbulence, we would not expect a correlation with inclination. The observed correlation implies that perturbations tend to be in the plane of the disc. Given that both  $\overline{k1}$  and  $\overline{k3 + k5}$  are correlated with  $\sin(i)$ , we do not apply an inclination correction to  $\overline{v_{\text{asym}}}$ .

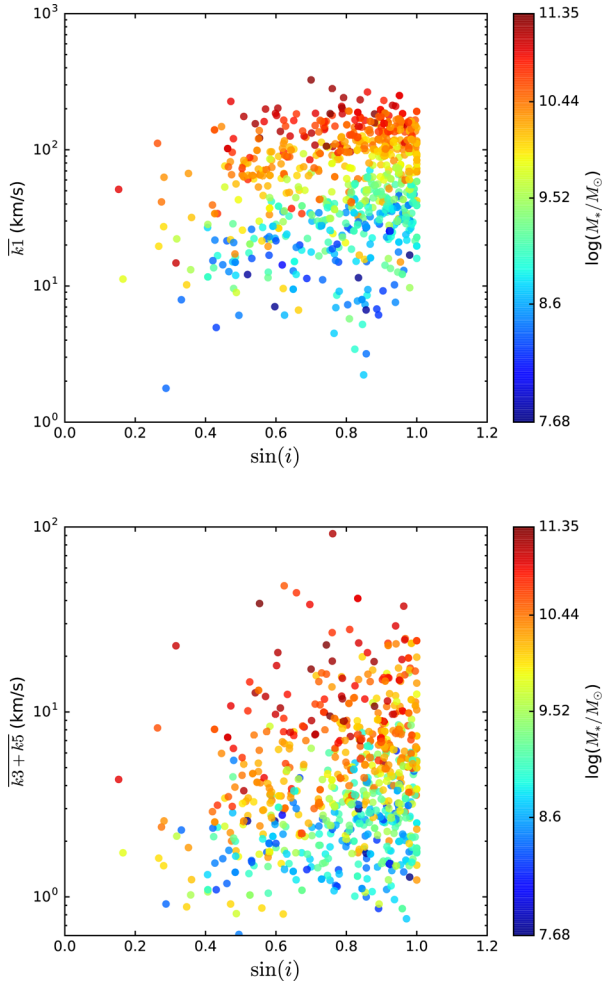
Due to the re-sampling process used to make the data cubes, the noise in neighbouring spaxels is correlated. This effect is negligible for spaxels spaced more than  $\sim 2.5$  spaxels apart. A full explanation of how covariance is handled in SAMI Galaxy Survey data can be found in Sharp et al. (2015). In Bloom et al. (2017) we forced the separation between kinemetry ellipses to be  $> 2.5$  spaxels. This avoided error underestimation, but reduced the number of ellipses such that it was not possible to extract rotation curves with sufficient detail for our purposes here. Accordingly, we allow the spacing between ellipses to be as low as 1 spaxel and account for covariance by bootstrapping errors. In most cases, perturbation in the velocity field, rather than error on  $k1$  terms, dominates the deviation of the fits from perfect, regular rotation.

### 2.2.4 $V_{\text{rot}}$

The  $V_{\text{rot}}$  measurements are obtained from the radial  $k1$  values fit by the kinemetry package (Krajnović et al. 2006), with the  $k1$  term carrying the bulk rotation of the disc. Using  $k1$  also has the advantage of removing most disturbance, as it traces only the first-order moment of the velocity map.

We applied the Bayesian model inference routine outlined in Callingham et al. (2015) to fit the rotation curves of the various galaxies in this study as arctan curves, using the model from Courteau (1997):

$$V = V_{\text{circ}} \times \left( \frac{2}{\pi} \right) \times \arctan \left( \frac{x}{r_t} \right) + c, \quad (3)$$



**Figure 2.** Inclination correction  $[\sin(i)]$  versus  $\overline{k1}$  and  $\overline{k3 + k5}$ , with points coloured by  $\log(M_*/M_\odot)$ . As expected,  $\sin(i)$  is correlated with  $\overline{k1}$  and  $\overline{k3 + k5}$ . Note that  $\overline{k1}$  represents bulk rotation, whereas  $\overline{k3 + k5}$  carries kinematic asymmetry.

where  $V_{\text{circ}}$  is the asymptotic velocity,  $x$  the distance from centre along the major axis,  $r_t$  the transition radius between the rising and flat part of the rotation curve and  $c$  is an offset term occurring when the fits do not pass through  $(0, 0)$ . Note that  $c < 5 \text{ km s}^{-1}$  in all fits, and is typically  $\sim 1 \text{ km s}^{-1}$ . We take the rotation velocity,  $V_{\text{rot}}$  as  $V$  at  $2.2r_e$ , where  $r_e$  is the effective radius from MGE fitting, because this is the location of peak rotational velocity of a pure exponential disc (Courteau 1997). Choosing  $2.2r_e$  as our cut-off value also ensured that we did not trace the fitted curve as far beyond the spatial coverage of the data as would be the case using the asymptotic velocity. In some cases, we do not reach out to  $2.2r_e$ , but we have found that these galaxies do not have a different distribution of  $V_{\text{rot}}$  values from the rest of the sample and their  $k1$  rotation curves are still well fitted by equation (3).

The posterior probability density functions of the model parameters of equation (3) were sampled using the Markov chain Monte Carlo algorithm `emcee` (Foreman-Mackey et al. 2013). As an affine-invariant ensemble sampler, `emcee` is suited to fitting the rotation curves because it is not significantly impacted by covariance between the parameters (Goodman & Weare 2010). A Gaussian likelihood function was maximized using `emcee`, with physically motivated uniform priors (i.e. no negative distances,  $r_t > 0$ ), by applying

the simplex algorithm to direct the walkers (Nelder & Mead 1965). The data were assumed to be Gaussian and independent in this process. The uncertainties derived from the method represent the difference between the mean of the posterior distribution and the 16th and 84th percentiles.

### 3 THE SAMI GALAXY SURVEY TFR

#### 3.1 2D spatially resolved TFR

Using the rotation curves generated by kinemetry (i.e. the  $k1$  radial values), we produce a ‘best case’ TFR in Fig. 3, with stellar masses from the GAMA Survey StellarMasses catalogue (Taylor et al. 2011) and points coloured by kinematic asymmetry. Rotation velocities were fitted as in Section 2.2.4, with 729 of 813 galaxies fitted successfully and passing quality control. Galaxies were rejected by the fitting routine if there were fewer than five points in the  $k1$  radial array with errors  $< 12 \text{ km s}^{-1}$ . We choose  $12 \text{ km s}^{-1}$  because beyond this value the scatter in the fitted velocities increases substantially. The median number of input points was 13. After error cuts, the median number of input  $k1$  values was 12. Fits failed quality control if there was no turnover point in the data, and the data did not extend out to  $2.2r_e$  (leading to unphysical fitted asymptotic velocities  $> 1000 \text{ km s}^{-1}$ ) or if  $\chi^2 > 200$ . We discuss quality control and fitting further in Section 3.2. Henceforth, galaxies with fits failing quality control or with too few included spaxels are considered ‘not fit’.

The median  $\overline{v_{\text{asym}}}$  of the not fit and the fit sample are not statistically offset at  $0.050 \pm 0.01$  and  $0.049 \pm 0.002$ , respectively. The highest value in the not fit sample is  $\overline{v_{\text{asym}}} = 0.87$ , whereas in the fit sample it is  $\overline{v_{\text{asym}}} = 0.78$ .

The other influence on whether galaxies could be fitted for circular velocity is  $H\alpha$  S/N. However, the median  $H\alpha$  S/N for those that could have their velocity fit, and those that could not be fit are within a standard error of each other:  $26.0 \pm 1.2$  and  $25.8 \pm 2.6$ , respectively. Similarly, the median number of spaxels is also within uncertainties:  $590.0 \pm 6.2$  and  $617.2 \pm 12.9$ . Table 1 details the fractions of galaxies successfully fitted and gives the numbers of galaxies that were excluded from the sample for various reasons.

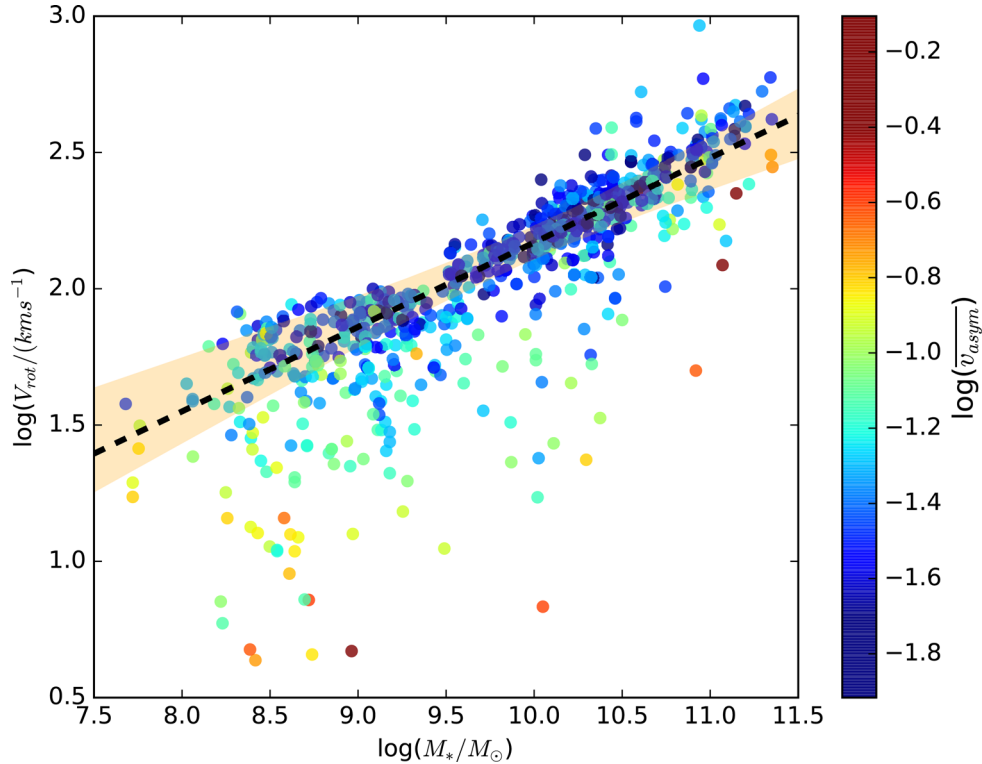
Poor spatial coverage and low  $H\alpha$  S/N are shown to cause galaxies to be rejected by our fitting routine for circular velocity. However, given that the number of rejected galaxies is  $\sim 10$  per cent, and that the median  $\overline{v_{\text{asym}}}$ , number of spaxels and median S/N remain unchanged, we conclude that the influence of these factors is small and does not cause significant bias in our sample, despite a weak tendency to reject the most asymmetric galaxies.

The TFR in Fig. 3 extends through the low stellar mass region of the sample. We stress that, unlike TFRs produced as distance indicators, we include all galaxies that satisfy our fitting and quality control procedures.

To define a fiducial TFR, we exclude asymmetric galaxies (being conservative, we set the cut-off to  $\overline{v_{\text{asym}}} < 0.04$ ) from the sample used to fit the TFR line because, in general, their gas velocities are not expected to follow the same relation as normal galaxies and they are seen to be outliers. We note that, within the range up to  $\overline{v_{\text{asym}}} < 0.06$ , there is no significant change in slope of or scatter around the TFR. Using only this low-asymmetry sample of galaxies, we fitted the TFR for our sample:

$$\log(V_{\text{rot}}/\text{km s}^{-1}) = 0.31 \pm 0.0092 \times \log(M_*/M_\odot) - 0.93 \pm 0.10 \quad (4)$$





**Figure 3.** The TFR, showing  $\log(V_{\text{rot}}/\text{km s}^{-1})$  at  $2.2r_e$  against  $\log(M_*/M_\odot)$ , with points coloured by  $\log(\overline{v_{\text{asym}}})$ .  $V_{\text{rot}}$  is calculated from the radial  $k1$  moment values produced by kinemetry. The TFR extends across the stellar mass range of the sample, although scatter increases at low stellar mass. Scatter is also correlated with asymmetry. The fit to low-asymmetry galaxies in equation (4) is shown in black (dashed), with  $1\sigma$  errors on the fit indicated by the orange region.

**Table 1.** This table gives the fraction of galaxies fit for each method, and the number of galaxies not fit because they had  $<5$  points with errors  $<12 \text{ km s}^{-1}$ , no turnover point or  $\chi^2 > 200$ , respectively. We also show global scatter measurements for the TFRs produced using our three methods (see Fig. 16). Scatter (both RMS and median absolute residual from TFR as in equation (4), in log space) is increased by using a slit, instead of the 2D spatially resolved map. Scatter is further increased when the slit is positioned at the photometric, rather than the kinematic PA.

	Fraction fit	Too few points	No turnover	$\chi^2 > 200$	RMS (dex)	Median abs. residual from TFR (dex)
2D Spat. resolved	90 per cent	59	21	0	0.15	0.058
Kin. PA slit	74 per cent	96	66	51	0.17	0.063
Phot. PA slit	68 per cent	102	42	101	0.25	0.071

with an RMS of 0.15 dex in  $\log(V_{\text{rot}}/\text{km s}^{-1})$  for the whole sample. The RMS for galaxies with  $\overline{v_{\text{asym}}} < 0.04$  is 0.091 dex. Due to the covariance between SAMI Galaxy Survey spaxels, we anticipate that the errors on individual  $V_{\text{rot}}$  values will be underestimated by the fitting code. Accordingly, in order to obtain errors on fitted TFR parameters, we bootstrap the calculation. The bootstrapping involved 1000 iterations of adding Gaussian noise, defined by scatter from the best fit, to the sample and recalculating the linear fit parameters, with the final error taken from the scatter in the fitted parameters over all the iterations. Henceforth we define scatter as the difference between the expected velocity from the power law fit and the observed velocity, for a given stellar mass.

As has been seen in previous work (e.g. Barton et al. 2001; Kannappan et al. 2002), scatter below the TFR increases at low stellar masses [ $\log(M_*/M_\odot) < 9.5$ ]. We find, using a Spearman rank correlation test of scatter to stellar mass,  $\rho = -0.21$ ,  $p = 2 \times 10^{-9}$ .

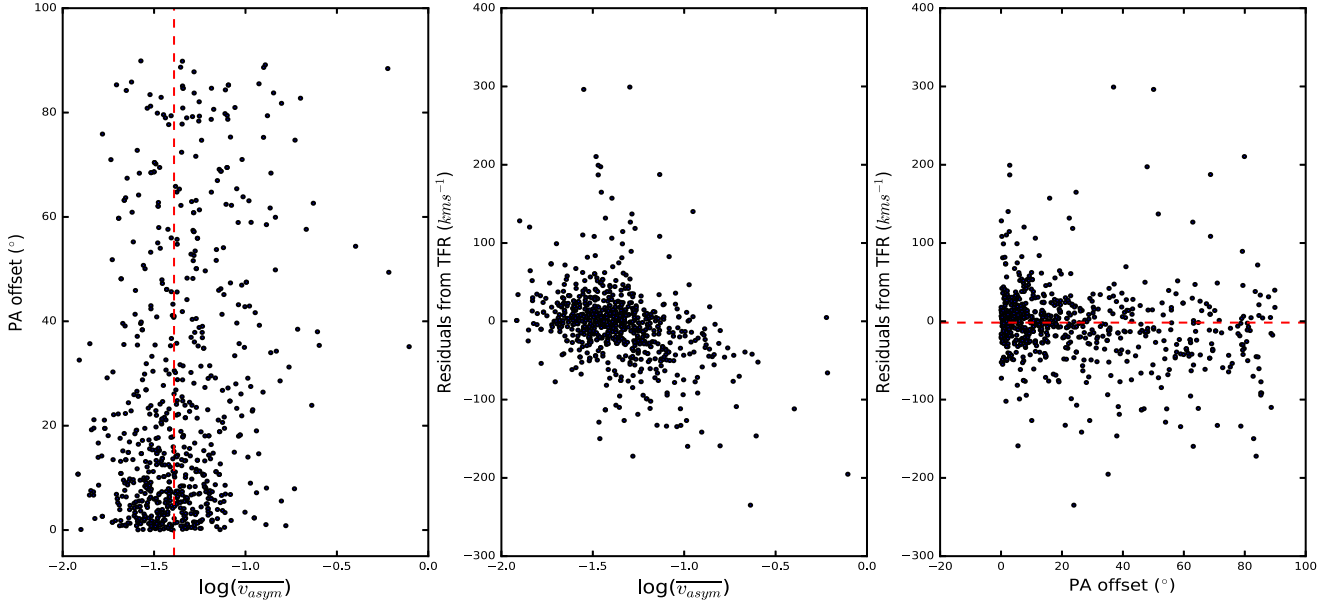
Scatter below the TFR is correlated with kinematic asymmetry, with  $\rho = 0.44$ ,  $p = 4 \times 10^{-38}$ , as can be seen in Fig. 3 (and explicitly in Fig. 4). Fig. 5 more explicitly shows the scale of the scatter in

our TFR. Of the 153 galaxies scattered below the root mean square (RMS) line, calculated for the whole asymmetry range, in Fig. 5 (lower dashed line), 49 per cent have  $\overline{v_{\text{asym}}} > 0.065$ . This is a much higher proportion of asymmetric galaxies than is found for galaxies above the RMS line (11 per cent). The median  $\log(V_{\text{rot}}/\text{km s}^{-1})$  in bins of stellar mass is also shown in red in Fig. 5. It is consistent with the fitted line over the full stellar mass range of the sample. There is more negative scatter in the low than higher mass cases:  $25 \pm 3$  per cent of galaxies with  $\log(M_*/M_\odot) < 9.5$  lie below the RMS line, compared to  $10 \text{ per cent} \pm 1$  of galaxies with  $\log(M_*/M_\odot) > 9.5$ . This result is in agreement with Krajnović et al. (2011), Oh et al. (2016) and others.

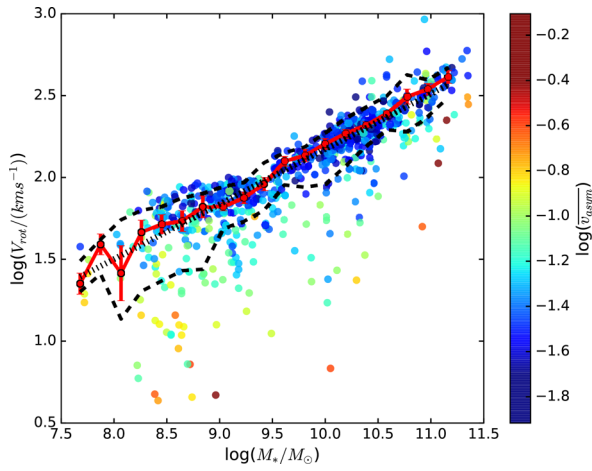
An offset between the photometric and kinematic PA is a known indicator of interaction. As in Fogarty et al. (2015), this offset is calculated as

$$\sin \Psi = |\sin(\text{PA}_{\text{phot}} - \text{PA}_{\text{kin}})|, \quad (5)$$

where  $\Psi$  is the offset, and  $\text{PA}_{\text{phot}}$  and  $\text{PA}_{\text{kin}}$  are the photometric and kinematic PAs, respectively. The offset lies between  $0^\circ$  and  $90^\circ$ ,



**Figure 4.** From left:  $\overline{v_{\text{asymp}}}$  against PA offset,  $\overline{v_{\text{asymp}}}$  against scatter off the 2D spatially resolved TFR and PA offset against scatter off the spatially resolved TFR. The correlation between PA offset and  $\overline{v_{\text{asymp}}}$  and the inverse relationships between  $\overline{v_{\text{asymp}}}$  and scatter off the TFR and PA offset and scatter off the TFR can be seen. However, the strongest trend is clearly the inverse correlation between scatter off the TFR and  $\overline{v_{\text{asymp}}}$ . Red dashed lines are included at the median of  $\overline{v_{\text{asymp}}}$  in the leftmost plot and TFR residual in the rightmost plot as visual aids to show the correlations.



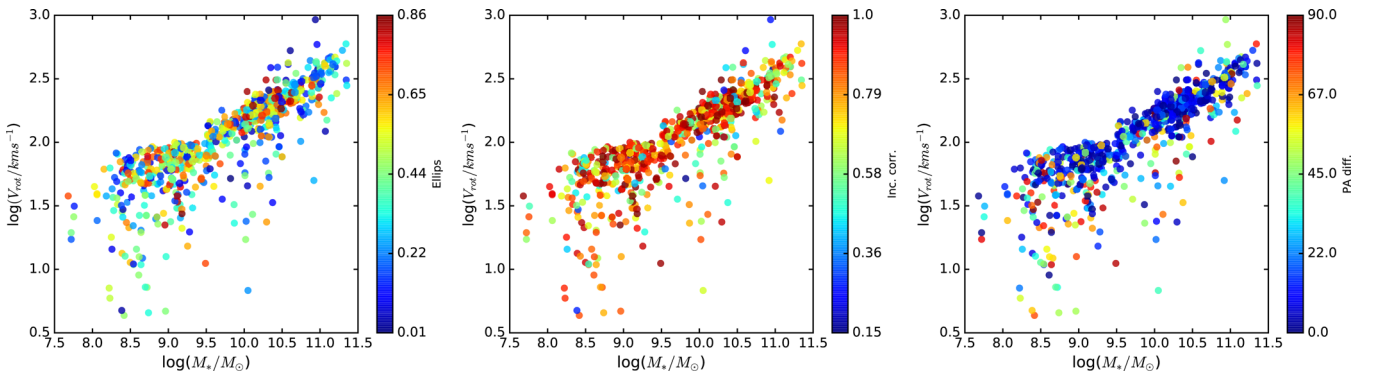
**Figure 5.** The TFR as in Fig. 3, with median rotation velocity in stellar mass bins (red line) and RMS in stellar mass bins for all galaxies (dashed, black). The TFR line from equation (4) is shown in dotted black.

and is insensitive to  $180^\circ$  differences in the PAs. The kinematic PA found as in Section 2.2.3 and photometric PA from single MGE fits to the SDSS  $r$ -band images in the GAMA Survey DR2 catalogue SersicCat (Kelvin et al. 2012).

All galaxies scattered below the RMS line have an offset between the kinematic and photometric PA  $>15^\circ$ .

Fig. 6 shows the TFR as in Fig. 3, but with points coloured by inclination correction, ellipticity and offset between the kinematic and photometric PAs. There is no relationship between inclination correction and scatter off the TFR either upwards or downwards ( $\rho = -0.022$ ,  $p = 0.56$ ), or between ellipticity and scatter off the TFR ( $\rho = -0.021$ ,  $p = 0.55$ ). There is, however, a correlation between PA offset and scatter, with  $\rho = 0.18$ ,  $p = 6.3 \times 10^{-7}$ . We discuss this relationship further in Section 4.4.

We note that the population of galaxies with ellipticity  $<0.1$  have slightly higher dispersion around the TFR line than the rest of the sample, with an RMS of 0.21 in  $\log(V_{\text{rot}}/\text{km s}^{-1})$ , compared to 0.15 for the whole sample. However, these galaxies do not exclusively



**Figure 6.** The TFR as in Fig. 3, with points coloured (left to right) by ellipticity, inclination correction and offset between the kinematic and photometric PA. There is no trend in the first two cases, but there is one in the third case. This indicates that scatter off the TFR is not associated with geometric correction, but it is linked to a physical process: the offset between PAs.

lie off the TFR, and represent only 4 per cent of the sample, so do not contribute significantly to statistical scatter. Given that we aim to be as complete as possible in our analysis, we do not perform an ellipticity cut.

Fig. 7 shows examples of fits to low-mass galaxies, to demonstrate that galaxies are fit well even at the low-mass end of the TFR. In some cases, there is patchy data with  $S/N > 6$  around the edges of the velocity field. This does not affect the fits, as kinematic ellipses are constrained by PA and ellipticity, and are only included if  $< 75$  per cent of points in the ellipse contain valid data. There may, however, be some uncertainty introduced by unreliable  $r_e$  measurements, due to the difficulties inherent in performing photometry on small, low surface brightness galaxies. We discuss this more fully in Section 4.1.

Fig. 8 shows our TFR in comparison with those from Green et al. (2013) and Simons et al. (2015) and our linear fit from Fig. 3 in comparison to that from Reyes et al. (2011). Our slope value is in agreement with the results from Reyes et al. (2011), who take a sample of 189 galaxies from the SDSS sample with  $z < 0.1$  over mass range  $9.0 < \log(M_*/M_\odot) < 11.0$  to find a slope of  $0.278 \pm 0.13$  (see Fig. 3). At high stellar mass, our TFR is in agreement with the results of Green et al. (2013) who, similarly to this work, use 2D spatially resolved  $H\alpha$  kinematics to fit rotation velocities at  $2.2r_e$  for low-redshift galaxies.

We also show the TFR line from Bekeraite et al. (2016), who use IFS to calculate rotation velocity from stellar kinematic maps. Comparison to this work is directly relevant, due to the closeness of their redshift ( $0.005 < z < 0.03$ ) and stellar mass [ $9.0 < \log(M_*/M_\odot) < 12.0$ ] ranges to the SAMI Galaxy Survey. Their work shows SDSS Petrosian absolute magnitude ( $M_r$ ) against circular velocity. In order to directly compare our measurements, we derive a conversion factor by taking the mean ratio of  $M_r$  to stellar mass for our galaxies with  $\bar{v}_{\text{asym}} < 0.04$  and  $\log(M_*/M_\odot) < 9.0$ . We use these cuts to exclude high asymmetry galaxies (as for producing equation 4) and so as not to extend below the CALIFA mass range. The resulting converted CALIFA stellar mass TFR is given by

$$\log(V_{\text{rot}}/\text{km s}^{-1}) = 0.26 \pm 0.017 \times \log(M_*/M_\odot) - 0.50 \pm 0.13. \quad (6)$$

This line is shown in Fig. 8. Despite the differences in method, the Bekeraite et al. (2016) fit agrees with the fit to our work within the errors. We note that our conversion factor was derived by taking a simple mean, which ignores differences in mass/light ratio for galaxies of different ages, which, if not ignored, may introduce a change in the derived slope. When comparing between different TFR studies, it is also important to note that many studies use different definitions of velocity. For example, Bekeraite et al. (2016) define rotation velocity at  $r_{\text{opt}}$ , the radius containing 83 per cent of the light. Different definitions of rotation velocity can lead to different TFR slopes if measured at a radius where the rotation curve has not flattened (Bradford, Geha & van den Bosch 2016). We note that at  $r_{\text{opt}}$ , most galaxies' rotation curves will have flattened, and depending on structural morphology it is a similar radius to  $2.2r_e$ , which was selected for the same reason.

Simons et al. (2015) found a transition mass in the TFR at  $\log(M_*/M_\odot) \sim 9.5$ , below which galaxies were almost all scattered lower than the relation, in contrast to our results. Fig. 9 shows histograms of residuals around the fitted TFRs for each data set, in bins of stellar mass. In the  $\log(M_*/M_\odot) < 9.0$  and  $9.0 < \log(M_*/M_\odot) < 10.0$  cases, there is an excess of negative

residuals in the Simons et al. (2015) distribution, in comparison to the distributions from the SAMI Galaxy Survey data, with two-sample Kolmogorov–Smirnov tests giving  $p$ -values of 0.018 and 0.023, respectively. In both data sets, there is a progressive increase in negative scatter as stellar mass decreases. The discrepancy may have been caused by the difficulty in accurate slit placement for low mass, asymmetric galaxies. Simons et al. (2015) themselves discuss the difficulty of accurate slit placement, and given the higher proportion of asymmetric galaxies at low stellar mass seen in Fig. 3, a number of the galaxies in Simons et al. (2015) may have inaccurate values for  $V_{\text{rot}}$ . Finally, the Simons et al. (2015) sample is at significantly higher redshift than ours ( $\bar{z} = 0.26$ , rather than  $\bar{z} = 0.03$ ), leading to lower spatial resolution. There may be redshift evolution between the Simons et al. (2015) sample and our sample. However, the TFR slope at the high-mass end is similar for both samples and therefore does not show the evolution suggested in Cresci et al. (2009) and Ziegler et al. (2001). Although change in TFR slope has been found in several studies of TFR evolution, there has been no work to date investigating scatter at the lower mass end as an effect of evolution of galaxy kinematics. The differences between slit and IFU data discussed above may mask any signatures of evolution of the TFR between Simons et al. (2015) and our sample at low stellar mass. Comparable data types are needed to conduct a valid study of evolution, such as between the KROSS and SAMI samples in Tiley et al. (in preparation).

In order to compare the low-mass end of our TFR with other samples, we convert our stellar masses to baryonic masses. We approximate the total baryonic mass by adding the fractional gas mass to the stellar mass, but as we do not have direct gas masses for our sample, gas fractions are estimated from equation 5 in Cortese et al. (2011):

$$\log\left(\frac{M(\text{HI})}{M_*/M_\odot}\right) = -0.33(\text{NUV} - r) - 0.40 \log(\mu_*) + 3.37, \quad (7)$$

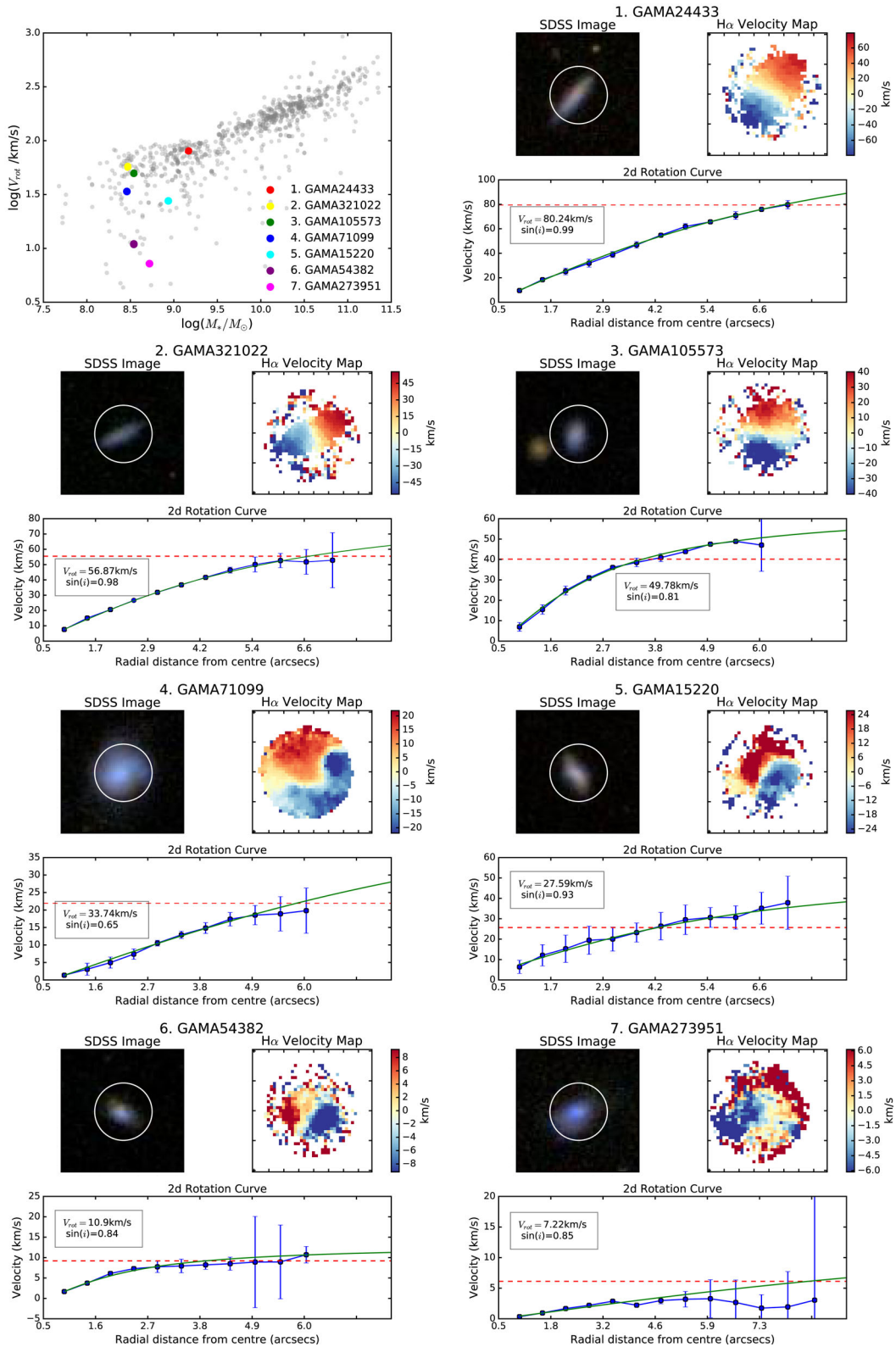
where  $\text{NUV} - r$  is the colour in magnitudes and  $\mu_*$  is the stellar mass surface density in  $M_*/\text{pc}^2$ . The relationships between stellar mass, scatter and asymmetry observed in Fig. 3 remain in the baryonic mass TFR.

Fig. 10 shows our TFR with baryonic mass, instead of stellar mass. We compare with the  $\text{H I}$  rotation velocity and baryonic mass TFRs from the low-redshift, gas dominated ( $M_{\text{gas}} > M_{\text{star}}$ ) sample in Stark et al. (2009), and the low-mass compilation in Papastergis et al. (2015), as discussed in Sales et al. (2017). These samples have selected against disturbed galaxies, so it is not surprising that our TFR shows more downwards scatter than theirs. However, it is notable that the main distributions are within a similar  $V_{\text{rot}}$  range.

### 3.2 ‘Simulated slit’ TFRs

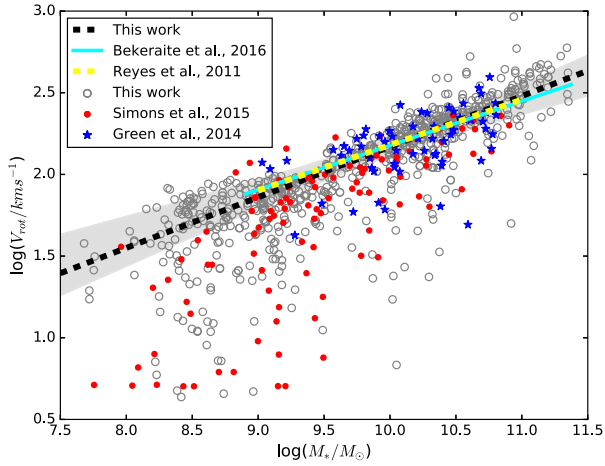
In order to examine the effects of slit measurement compared with 2D kinematics, we placed a ‘simulated slit’ on the observed SAMI Galaxy Survey  $H\alpha$  velocity fields.

Using either photometric or kinematic position angles, we selected spaxels from SAMI Galaxy Survey  $H\alpha$  velocity maps along a ‘slit’ of width 1 arcsec and the given PA. This slit width allows our results to be compared to other low-redshift TFR studies, including Raychaudhury et al. (1997), Kannappan et al. (2002), Reyes et al. (2011) and others, that use slit widths 2 arcsec and smaller, and are comparable to our work on a physical scale. We note that slit widths of 2 or 3 arcsec do not alter the global scatter of the resulting TFR.



**Figure 7.** The TFR as in Fig. 3, with examples of low-mass galaxies to illustrate that we are able to fit low stellar mass galaxies with a variety of velocities. The top left panel shows the TFR with the examples in colours. For each galaxy, the SDSS image is shown with the 15 arcsec SAMI field of view as a white circle (left) and the H $\alpha$  velocity field with  $S/N > 6$  (right). The  $k1$  values from kinematics are plotted, as well as the fitted rotation curve. The red horizontal line gives  $V_{rot}$  at  $2.2r_e$ , uncorrected for inclination. Corrected rotation velocities and inclination corrections are given within the figures.

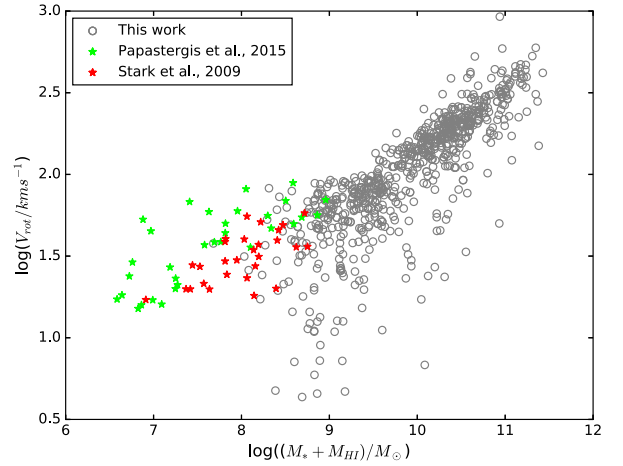




**Figure 8.** The 2D TFR from this work shown with the stellar mass/H $\alpha$  TFR from Green et al. (2013) and Simons et al. (2015) and the fitted TFR lines from Reyes et al. (2011) and Bekeraite et al. (2016). The linear fit to our data from Fig. 3 is also shown. Our points and fit are consistent with the comparison samples at high mass. Below  $\log(M_*/M_\odot) \sim 9.5$ , however, there is disagreement between our results and those in Simons et al. (2015). Unlike Simons et al. (2015), we do not see a decay of the TFR below this cut-off, although there is an increase in negative scatter.

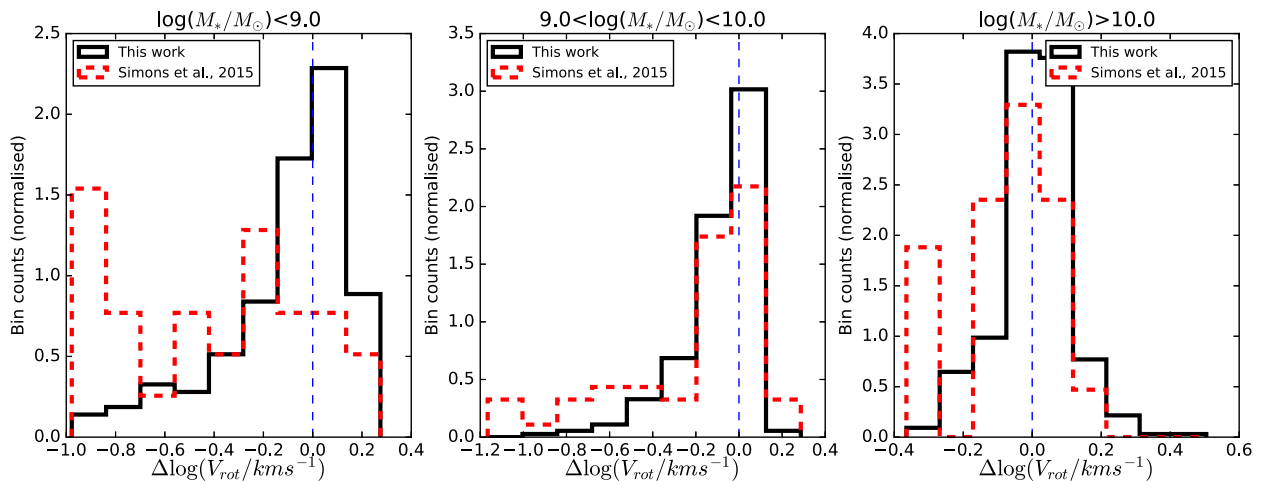
We also select a narrow slit width in order to isolate the effects of changing the PA, and minimize spaxels selected in common when the PAs are offset. Velocity values for spaxels falling within the slit were plotted against radial distance from the fitted central spaxel, and arctan rotation curves were fitted to the slit data, as above. We note that slit placement for our sample is not vulnerable to placement error, as is discussed in Simons et al. (2015), who consider acceptable slit placement to be within  $40^\circ$  of the photometric PA. Of course, some galaxies may have poorly defined PAs, such as in the case of strong bars (in the photometric case) or asymmetric galaxies (in the photometric and kinematic cases). However, once the PA is calculated, there is no error in placement.

Of the total parent sample of 813 galaxies, the highest fraction were fitted when the input velocities were from 2D spatially resolved kinematics. Table 1 gives fraction of galaxies fit for each

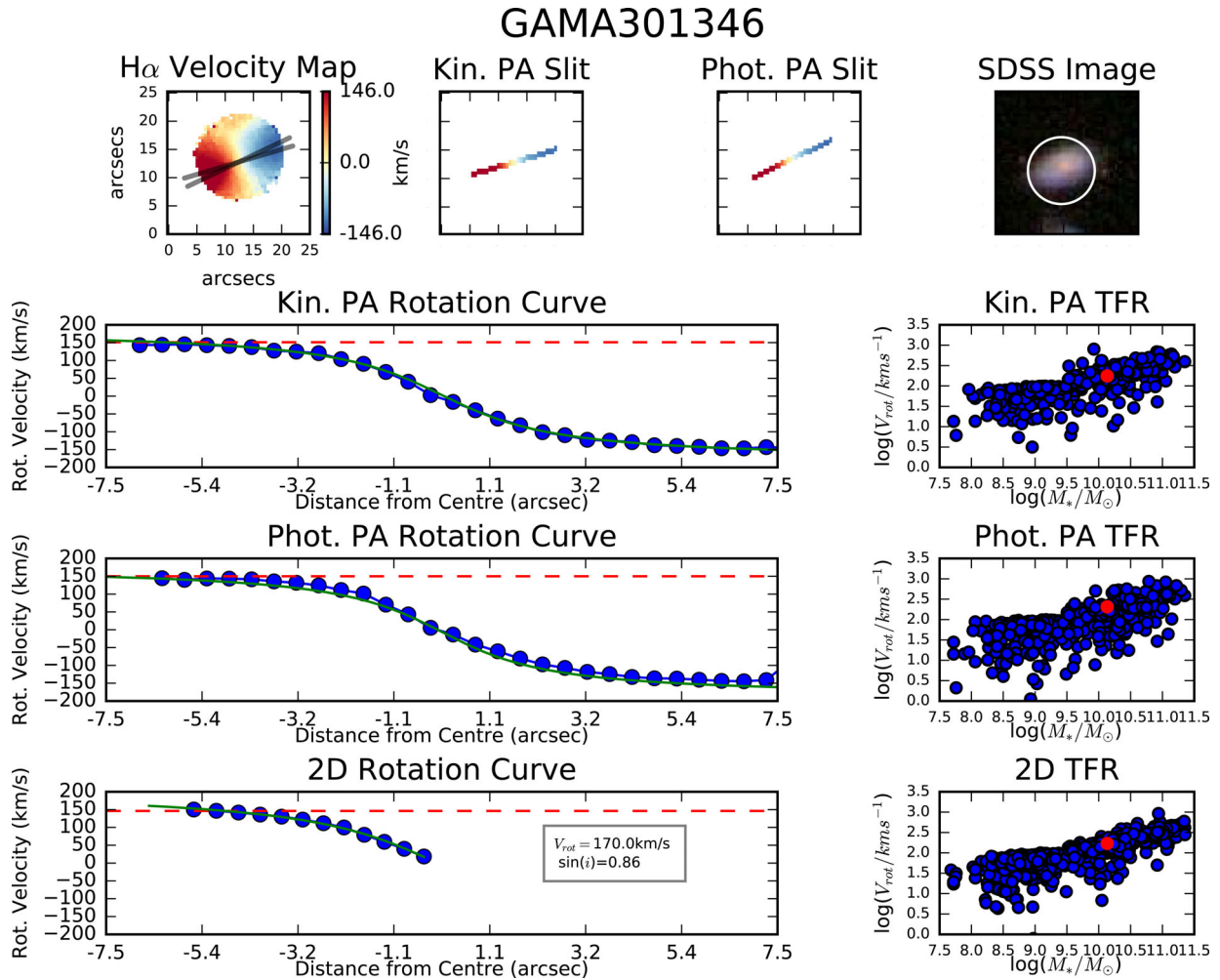


**Figure 10.** The 2D TFR with baryonic masses, shown with comparison samples from Stark et al. (2009) and the compilation in Papastergis et al. (2015). These comparison samples follow a similar distribution to our work, taking into account that they selected against disturbed galaxies, and so show less scatter than our complete sample.

method, and the number of galaxies not fit because they had  $<5$  points with errors  $<12 \text{ km s}^{-1}$ , no turnover point or  $\chi^2 > 200$ , respectively. We applied the same cuts to the 2D and simulated slit samples. We choose a limit of  $\chi^2 = 200$  because the distribution of  $\chi^2$  was strongly peaked at low values, and for all three samples has a significant break between 200 and 550, making this a natural cut-off. The reduced  $\chi^2$  distribution also has a clear break, and separates out the same galaxies. We note that no galaxies in the 2D spatially resolved sample were cut because they had  $\chi^2 > 200$ . In fact, four galaxies had  $\chi^2 > 200$ , but also had no turnover, which was the cut performed first. 82 per cent of galaxies in the 2D spatially resolved sample had  $\chi^2 < 14$ , and 90 per cent had  $\chi^2 < 50$ . Galaxies with higher  $\chi^2$  were asymmetric galaxies with rotation curves deviating from the arctan model. However, the generally low  $\chi^2$  values for fits to kinematically normal galaxies provide justification for the use of the arctan curve from Courteau (1997), as it is a good match for the rotation curves derived from the whole kinematic map.



**Figure 9.** Histograms of residuals around the TFR lines (shown in Fig. 8) for the Simons et al. (2015) data (red, dashed) and that in this work (black, solid), with the zero line in each case shown in dashed blue. In all cases, there is an excess of negative residuals in the Simons et al. (2015) distribution, in comparison to this work.



**Figure 11.** We show fit results for GAMA310346, as an example of a kinematically normal galaxy, in which the photometric and kinematic PAs are aligned. The top row shows the H $\alpha$  velocity map from LZIFU (with the kinematic and photometric PAs overplotted) cut by S/N, the simulated slit spaxels at the kinematic and photometric PAs and the SDSS image. The SAMI instrument field of view is shown as a white circle. We then show the fitted rotation curve (green) and position on the TFR (red) for the simulated slits and 2D spatially resolved maps, respectively. On the plots of the rotation curves, the red dashed line shows the velocity (without inclination correction) at  $2.2r_e$ . The 2D rotation curve is a symmetric one-sided rotation curve, which has been plotted on the same axis scale as the others for ease of comparison.

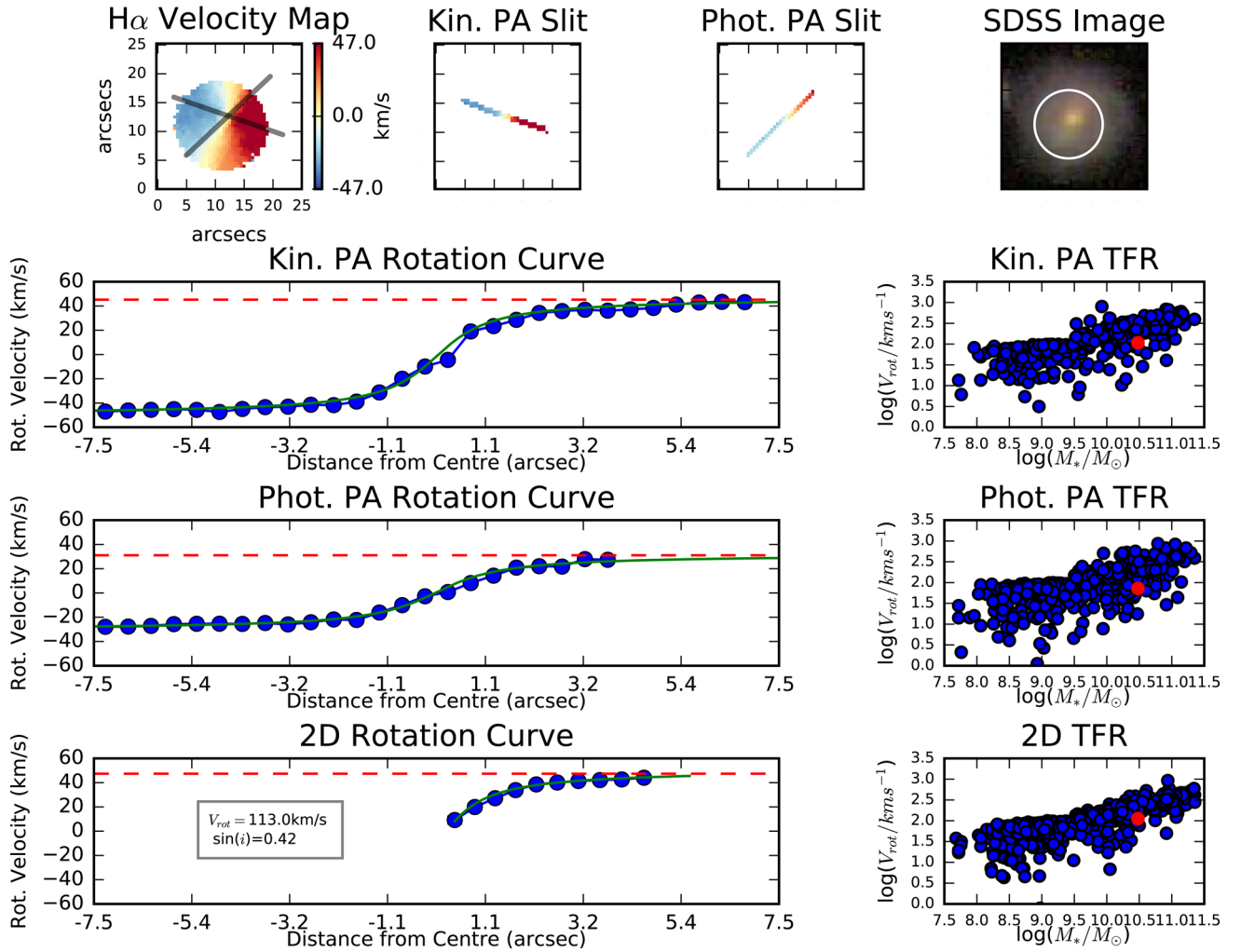
Typical degrees of freedom for each rotation curve are  $\sim 10$  for rotation curves from kinematics and  $\sim 20$  for those from the simulated slit.

The reason for the larger number of fitted galaxies from 2D kinematics is that the  $k1$  values used in the 2D spatially resolved case represent bulk rotation, without asymmetry. Further, using the 2D spatially resolved data allows for more spaxels to be included, reducing the proportional influence of individual, noisy data points or fluctuation in the velocity field. We note that there is no systematic difference in the kinematic asymmetry of the three samples, with the median asymmetries for the 2D spatially resolved maps, kinematic and photometric slits being  $0.040 \pm 0.002$ ,  $0.038 \pm 0.002$  and  $0.039 \pm 0.002$ , respectively. Typical uncertainties are also equivalent.

Fig. 11 shows example plots for a normal galaxy, with low kinematic asymmetry and aligned photometric and kinematic PAs. Fig. 12, by contrast, shows a kinematically normal galaxy for which there is significant misalignment between the photometric and kinematic PA. This misalignment causes a  $\sim 40 \text{ km s}^{-1}$  difference in calculated rotation velocity when using slits placed at the different PAs

and illustrates how using the photometric PA to measure rotation velocity can increase scatter off the TFR. Fig. 13 shows an asymmetric, low-mass galaxy, for which the PAs are also misaligned. In this case, asymmetry makes determination of an accurate PA in either case difficult. However, the comparative smoothness of the rotation curve generated from the 2D spatially resolved map, compared to that from the slits, demonstrates the value of the map method in producing a better rotation curve fit. We note that the slit rotation curves are not always centred on 0. This is because the slit is centred on the photometric centre of the galaxy, which can be offset from the kinematic centre of the map. Because the ellipses used to generate the rotation curves from kinematics use the photometric centre, rather than the kinematic centre, the curves do not always go through (0, 0), as there are often slight offsets between the centres of the flux and H $\alpha$  velocity maps. Given that the offset is, in all cases, less than the error on the fitted velocity, we do not consider this a significant cause of scatter. We also note that the offsets are not proportional to  $\overline{v_{\text{asym}}}$ , making it unlikely that small differences between the photometric and kinematic centres contribute significantly to asymmetry.

## GAMA623144



**Figure 12.** A galaxy with offset photometric and kinematic PAs. The circular velocity using the 2D spatially resolved map is  $113.0 \text{ km s}^{-1}$ , similar to the value calculated when using the slit at the kinematic PA ( $115.2 \text{ km s}^{-1}$ ). However, when the slit is placed at the photometric PA, the circular velocity is found to be  $77.0 \text{ km s}^{-1}$ . Note that this galaxy is not centred in the SAMI instrument field of view.

Figs 14 and 15 show the TFR produced using a slit placed along the photometric and kinematic PA, respectively.

#### 4 CAUSES OF SCATTER

Scatter off the TFR can be caused either by observational effects or by physical properties of galaxies. Understanding the scatter is thus crucial, both to more accurately plot the TFR and to understand why galaxies scatter. Processes known to correlate with scatter, such as asymmetry (Kannappan et al. 2002), are also important for understanding galaxy evolution.

Fig. 16 shows the TFRs produced by the three methods (2D kinematics, a slit at the kinematic PA and one at the photometric PA), including only the 456 galaxies common to all three. Table 1 gives the RMS and median absolute residuals off the TFR line for the three TFRs in Fig. 16. There are a variety of causes of scatter, which affect the TFRs in different ways:

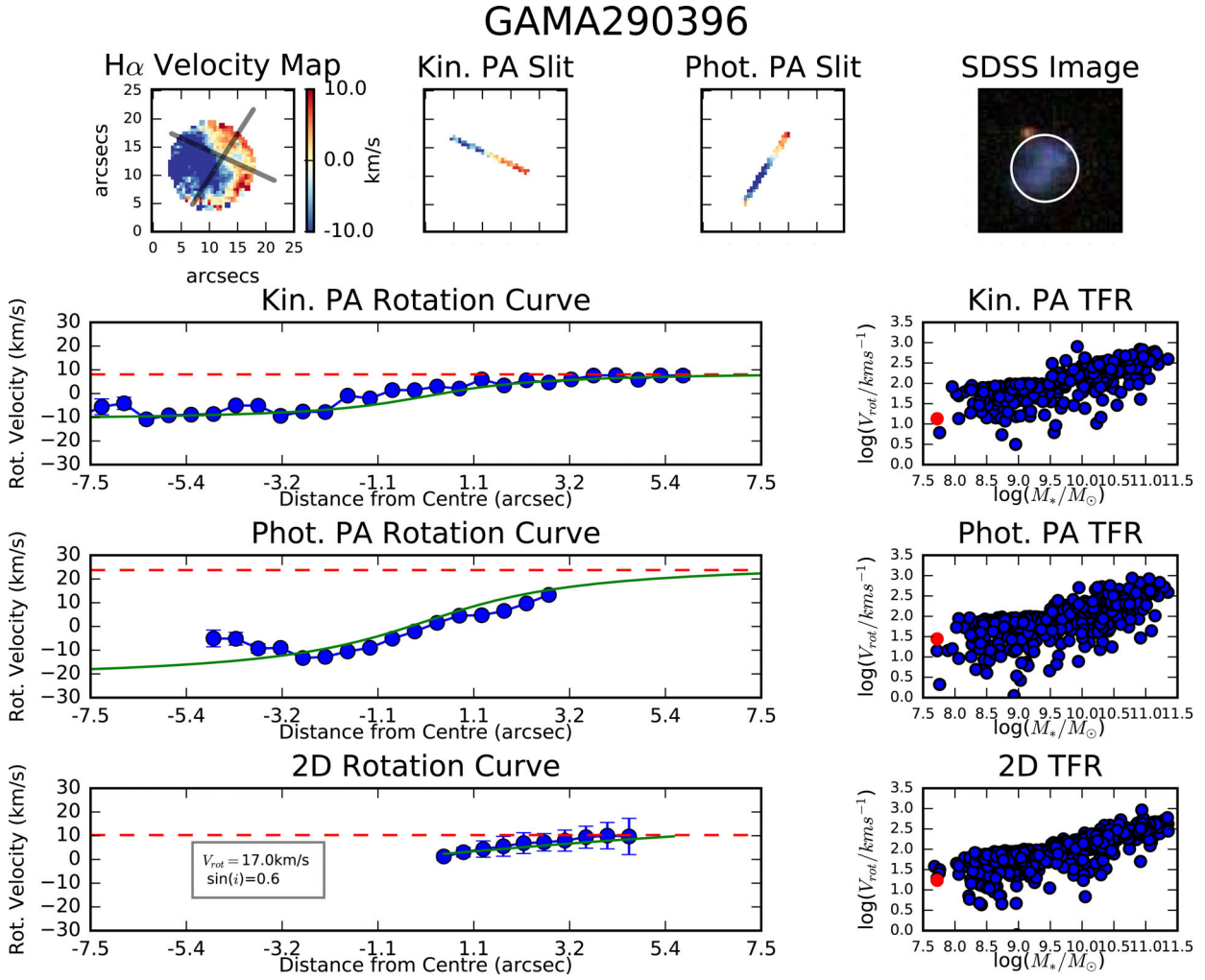
- (i) Photometric uncertainties
- (ii) Kinematic asymmetry
- (iii) Scatter caused by using a slit

- (iv) Underestimation of  $V_{\text{rot}}$  caused by not measuring velocity along the kinematic PA

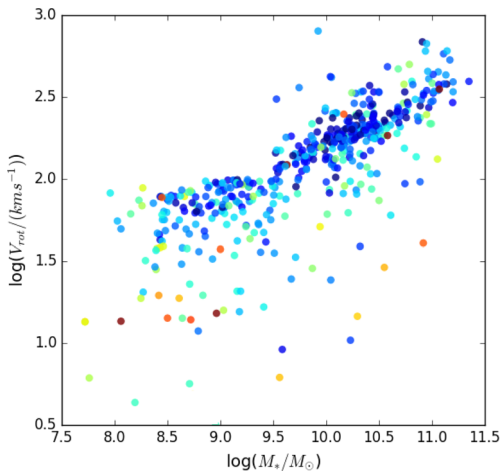
We discuss these effects in turn in the following sections.

##### 4.1 Photometric uncertainties

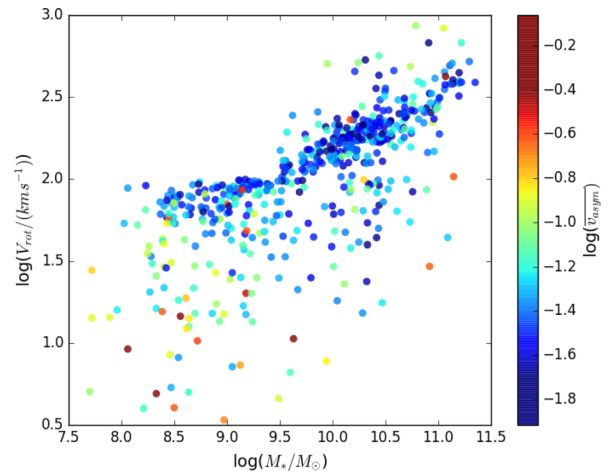
Small, low surface brightness galaxies may have less reliable photometry than large, bright galaxies, as has been noticed in Hill et al. (2011) and Simons et al. (2015). The typical error value for MGE fits is 0.05 on  $\log(r_e)$ , but it is anticipated that there may be small increases in error on PA and ellipticity at low stellar masses. In order to quantify the photometric uncertainty, we calculated the difference in PA,  $r_e$  and ellipticity from MGE photometry and the GAMA Sérsic catalogue (Kelvin et al. 2012). The RMS of the differences in PA,  $r_e$  (normalized to the MGE  $r_e$ ) and ellipticity are  $14.6^\circ$ , 0.24 and 0.12, respectively. The fractions of galaxies with scatter  $>3\sigma$  are 3 per cent, 2 per cent and 1 per cent, respectively. We note that we expect the slightly larger scatter and RMS values for difference in the PA because of the large uncertainties associated with calculating a PA for very circular galaxies. Nevertheless, the



**Figure 13.** A highly asymmetric ( $\overline{v_{\text{asym}}} = 0.17$ ) galaxy at low stellar mass. The photometric and kinematic PAs are significantly offset (although, given the level of disturbance, calculating an accurate PA is difficult). The rotation curve from the 2D spatially resolved map is much smoother than those from the simulated slits. This galaxy is also not centred in the SAMI instrument field of view.

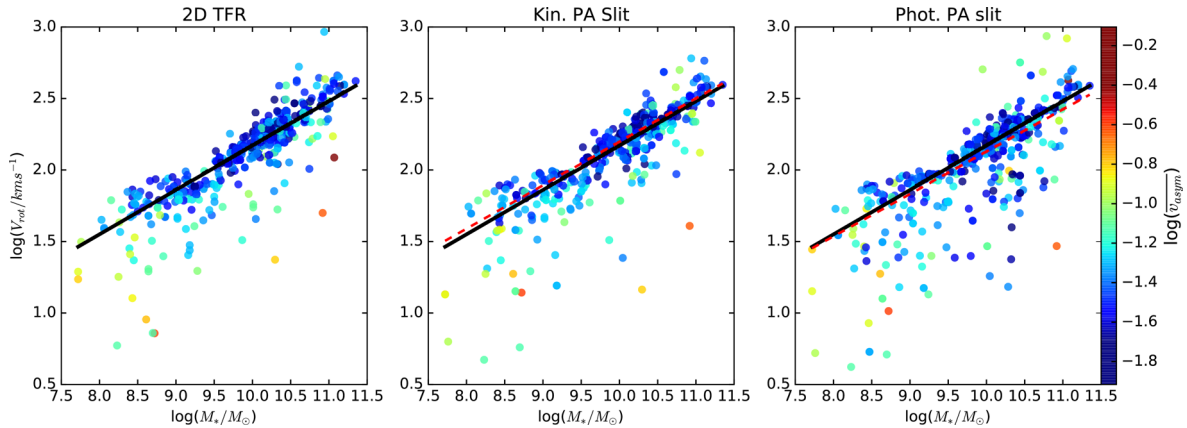


**Figure 14.** The TFR with  $\log(M_*/M_\odot)$  against  $\log(V_{\text{rot}}/\text{km s}^{-1})$  at  $2.2r_e$ , calculated using rotation values from a slit placed along the kinematic PA. Points are coloured by  $\log(\overline{v_{\text{asym}}})$ . The only change between this plot and Fig. 15 is the angle at which the slit is placed.



**Figure 15.** The TFR with  $\log(M_*/M_\odot)$  against  $\log(V_{\text{rot}}/\text{km s}^{-1})$  at  $2.2r_e$ , calculated using rotation values from a slit placed along the photometric PA. Points are coloured by  $\log(\overline{v_{\text{asym}}})$ . There is more scatter than in Fig. 3, particularly at low stellar mass. The main trends of Fig. 3, however, are still visible: the TFR extending to low stellar mass and a correlation between scatter and  $\overline{v_{\text{asym}}}$ .





**Figure 16.** TFRs produced using three methods, showing only galaxies common to all three. Points are coloured by kinematic asymmetry, and the black line shown gives the fitted TFR from Fig. 3. The decrease in scatter from left to right is demonstrative of the influence of PA and the kinemetry method of moment extraction. The red dashed lines show the TFR fit line for the galaxies common to all three using the kinematic and photometric PA, respectively. Slopes and intercepts are given in Table 2.

**Table 2.** This table gives Spearman rank correlation parameters (subscript SM) between scatter off the TFR and stellar mass for the three TFRs in Fig. 16. In all three cases, scatter below the TFR is inversely correlated with stellar mass. We also give correlation parameters (subscript asym) for  $\overline{v_{\text{asym}}}$  and scatter off the TFR for the three samples in Fig. 16. The relationship holds in all three cases. Note that the correlations are negative because the main scatter is below the TFR. Finally, we give TFR fit parameters for all three samples, as shown in Fig. 16.

	$\Delta V_{\text{rot}}/\text{stellar mass correlation}$		$\Delta V_{\text{rot}}/\overline{v_{\text{asym}}}$ correlation		TFR fit parameters	
	$\rho_{\text{SM}}$	$p\text{-value}_{\text{SM}}$	$\rho_{\text{asym}}$	$p\text{-value}_{\text{asym}}$	Slope	y-int.
2D Spat. resolved	-0.28	$2 \times 10^{-6}$	-0.30	$1.4 \times 10^{-8}$	0.31	-0.93
Kin. PA slit	-0.25	$4 \times 10^{-5}$	-0.32	$1.2 \times 10^{-9}$	0.30	-0.84
Phot. PA slit	-0.36	$2 \times 10^{-3}$	-0.25	$2.5 \times 10^{-6}$	0.29	-0.83

fact that the scatter and RMS remain small in all cases indicates that the Sérsic and MGE values are largely equivalent.

It is possible that a small amount of scatter at low stellar mass is enhanced by errors in photometry. However, causes of scatter are discussed below and, in particular, errors in stellar mass are small even at low stellar mass, averaging 0.1 dex, and are thus insufficient to explain the large scatter that we observe.

#### 4.2 Kinematic asymmetry

In all cases in Fig. 16, there remains the correlation between kinematic asymmetry and scatter below the TFR, as in Figs 3 and 4. Table 2 gives correlation parameters for this relationship in all three cases.

There is also an inverse relationship between stellar mass and scatter off the TFR. Using the linear fit TFR from Fig. 3, we calculate the negative scatter correlation with stellar mass and present the results for the common galaxies in Table 2.

Given the known inverse relationship between stellar mass and kinematic asymmetry (van Zee et al. 1998; Cannon et al. 2004; Lelli et al. 2014; Bloom et al. 2017) and the relationships shown here between scatter off the TFR and kinematic asymmetry, this is not surprising. However, that the degree to which scatter depends on stellar mass changes between the presented TFRs (see Table 2) is indicative that it is more than a purely physical relationship, and could be at least partly a function of measurement. Oh et al. (2016) demonstrated an inverse relationship between asymmetry and rotation velocity from stellar kinematics.

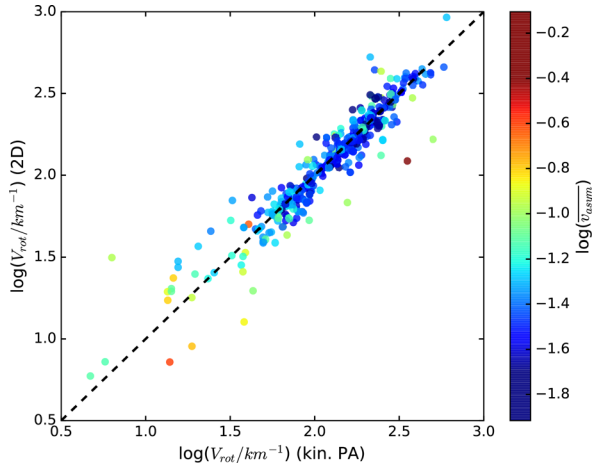
The  $S_{0.5}$  relation gives  $\log(M_*/M_\odot)$  against  $\sqrt{0.5V_{\text{rot}}^2 + \sigma^2}$ , where  $\sigma$  is the mean velocity dispersion. It has been observed that

asymmetric galaxies scatter less from the  $S_{0.5}$  relation than they do from the TFR (Cortese et al. 2014; Simons et al. 2015). This indicates that asymmetry is related to the extent to which systems are dispersion, rather than rotation, supported. We shall investigate this further in future work.

#### 4.3 Scatter caused by using a slit

The slightly decreased scatter in the TFR from 2D kinematics compared with the kinematic slit TFR (see Table 1), is due to the derivation of the  $V_{\text{rot}}$  values in the 2D kinematics TFR from the  $k1$  moment map, that contains bulk rotation without asymmetry.  $k1$  shows underlying disc rotation, calculated over all spaxels in the input velocity map, specifically excluding asymmetry and perturbation. By contrast, the velocity values used to produce the  $V_{\text{rot}}$  values in the kinematic slit TFR are taken directly from the total velocity map, that includes asymmetries and fluctuations between spaxels. This can be seen in the difference between rotation curves from kinemetry and the kinematic PA slit in Figs 12 and 13, in which the rotation curve from the kinematic slit is significantly less smooth than that from 2D kinematics.

Fig. 17 shows  $\log(V_{\text{rot}}/\text{km s}^{-1})$  from the kinematic PA slit against  $\log(V_{\text{rot}}/\text{km s}^{-1})$  from the 2D kinematic maps, with points coloured by asymmetry. A Spearman rank correlation test of asymmetry and absolute difference between  $\log(V_{\text{rot}}/\text{km s}^{-1})$  from the kinematic PA slit against  $\log(V_{\text{rot}}/\text{km s}^{-1})$  from the full kinematic maps gives  $\rho = 0.2$ ,  $p = 3 \times 10^{-5}$ . The relationship between the  $V_{\text{rot}}$  values is tight at high velocity, but below  $\log(V_{\text{rot, 2D}}/\text{km s}^{-1}) \sim 1.7$  the relation becomes much less tight. This indicates that the effects



**Figure 17.**  $\log(V_{\text{rot}}/\text{km s}^{-1})$  from the kinematic PA slit against  $\log(V_{\text{rot}}/\text{km s}^{-1})$  from the full kinematic maps, with points coloured by asymmetry. Difference between the measured  $V_{\text{rot}}$  values is correlated with asymmetry, with an otherwise tight relation showing increased scatter below  $\log(V_{\text{rot, 2D}}/\text{km s}^{-1}) \sim 1.7$ .

described above disproportionately affect asymmetric (and, by extension, low mass) galaxies.

The inherent lack of smoothing entailed by using a slit also contributes some of the increased scatter in the photometric slit TFR (see Table 1), as the rotation curves are produced in the same way as the kinematic slit TFR.

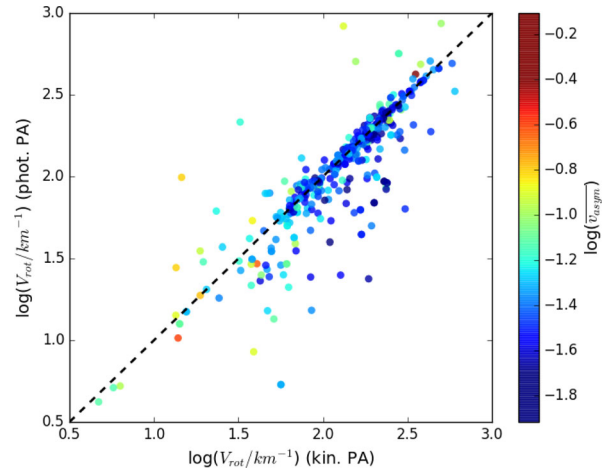
#### 4.4 Offset between photometric and kinematic PA

Other than input PA, there is no difference in velocity fitting or input data between the photometric and kinematic PA slit TFRs. From the increased scatter in the photometric slit TFR, compared to the kinematic slit TFR, we conclude that scatter in the photometric slit TFR can be at least partially attributed to the fact that 23 per cent of galaxies common to all three TFR samples have misalignment  $>30^\circ$ . This misalignment leads to systematic underestimation of the rotation velocity when calculated along the photometric PA. In extreme cases, the photometric PA may lie along the zero line of the velocity map, entirely ‘missing’ the galaxy’s rotation (see Figs 11, 12, 13). Fig. 18 shows the underestimation of  $V_{\text{rot}}$  for some galaxies produced by using the photometric, rather than kinematic PA. There are multiple causes of kinematic and photometric misalignment. Table 3 gives the results of a by-eye classification of misaligned galaxies, done by examining rotation maps and SDSS images of misaligned galaxies. Of the misaligned galaxies, those with bars and those which are face-on can be considered to be misaligned due to observational, rather than physical effects. That is, the bar leads to the measured photometry being significantly different from the kinematics. If they were excluded from the photometric PA TFR, scatter would decrease.

Fig. 19 demonstrates this relationship (with a correlation  $\rho = 0.66$ ,  $p = 1 \times 10^{-15}$ ) between difference in  $V_{\text{rot, kin.PA}}$  and  $V_{\text{rot, phot.PA}}$  and PA offset (with  $V_{\text{rot, kin.PA}}$  and  $V_{\text{rot, phot.PA}}$  being the rotation velocities calculated using the kinematic and photometric PAs, respectively). We define velocity offset as

$$V_{\text{offset}} = V_{\text{rot, kin.PA}} - V_{\text{rot, phot.PA}}. \quad (8)$$

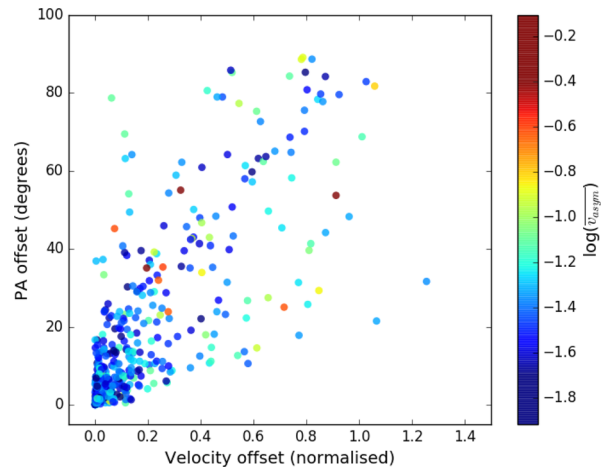
There is a further correlation between PA offset and asymmetry, with  $\rho = 0.17$ ,  $p = 1 \times 10^{-4}$ . As shown in Fig. 6, there is also a



**Figure 18.**  $V_{\text{rot}}$  using the photometric against kinematic slit, with points coloured by asymmetry. Using the photometric slit produces a systematic underestimation of  $V_{\text{rot}}$ , as compared with the kinematic slit.

**Table 3.** This table gives results of a by-eye classification of misaligned galaxies in order to identify causes of misalignment. Face-on galaxies may have uncertain photometric PAs, whereas bars can lead to spurious photometry. Asymmetric galaxies may have variable or distorted PAs and kinematics. Lastly, ‘normal’ galaxies are both photometrically and kinematically normal, but are nevertheless misaligned.

Classification	Fraction of misaligned galaxies	Number
Face-on	9 per cent	10
Barred	29 per cent	30
Asymmetric	24 per cent	25
Normal	37 per cent	39



**Figure 19.** Difference between  $V_{\text{rot, kin.PA}}$  and  $V_{\text{rot, phot.PA}}$ , normalized by  $V_{\text{rot, kin.PA}}$ , against offset in kinematic and photometric PA, with points coloured by asymmetry. There is a correlation between difference in calculated  $V_{\text{rot}}$  and PA offset, and between asymmetry and PA offset.

relationship in the 2D spatially resolved TFR between scatter off the TFR and PA offset.

Fig. 4 shows the three key relationships in this work:  $\overline{v_{\text{asym}}}$  against PA offset,  $\overline{v_{\text{asym}}}$  against residuals above and below the TFR, and PA offset against scatter off the 2D spatially resolved TFR for all galaxies in Fig. 3, with Table 4 giving partial Spearman rank correlation test results. Note that galaxies scattered above the TFR

**Table 4.** This table gives partial correlation parameters between  $\overline{v_{\text{asym}}}$ , PA offset and scatter off the TFR, with the variable held constant indicated by '!'. Tests were performed using all points in Fig. 3. Whilst the relationships persist in all three cases, the links between PA offset and  $\overline{v_{\text{asym}}}$  and scatter off the TFR and  $\overline{v_{\text{asym}}}$  are stronger than that between PA offset and scatter off the TFR.

	$\rho$	$p$ -value
$\overline{v_{\text{asym}}}$ / PA offset (! TFR scat.)	0.19	$1.2 \times 10^{-7}$
$\overline{v_{\text{asym}}}$ / TFR scat. (! PA offset)	-0.27	$1.9 \times 10^{-14}$
PA offset/TFR scat. (! $\overline{v_{\text{asym}}}$ )	-0.12	$2.1 \times 10^{-2}$

with large PA offsets are asymmetric and barred galaxies. Although the inverse relationship between  $\overline{v_{\text{asym}}}$  and scatter off the TFR is the strongest, the correlation between  $\overline{v_{\text{asym}}}$  and PA offset and the inverse relationship between scatter off the TFR and PA offset are also evident. The relative strengths of these relationships point to kinematic asymmetry as the strongest driver of scatter off the TFR.

However, the influence of PA choice on scatter is significant. Our photometric PA slit method is similar to placing a long slit at the photometric PA to calculate rotation velocity, as is seen in literature (e.g. Neistein et al. 1999; Pizagno et al. 2007; Reyes et al. 2011; Simons et al. 2015). Some scatter in the TFRs in these works can be attributed to their use of the photometric PA. Deeper photometry, or targeting more nearby galaxies, may be able to reduce scatter in these cases, as the derived PA would be less influenced by bars, and galaxies identified as belonging to some categories in Table 3 could be excluded.

## 5 CONCLUSIONS

Without selecting based on asymmetry or Hubble type, we show the TFR for 729 kinematically and morphologically diverse galaxies in the SAMI Galaxy Survey sample and find

$$\log(V_{\text{rot}}/\text{km s}^{-1}) = 0.31 \pm 0.092 \times \log(M_*/M_{\odot}) - 0.93 \pm 0.10. \quad (9)$$

Scatter increases at low stellar mass, but the TFR, particularly for low asymmetry galaxies, is still present. Scatter below the TFR is well correlated with asymmetry across the stellar mass range of the sample. Asymmetry is inversely correlated with stellar mass, confirming the result of Bloom et al. (2017).

We find that slit-based, rather than 2D spatially resolved, measurements of rotation velocity increase scatter below the TFR. Further, if the slit is placed at the photometric PA, rather than the kinematic, scatter increases again. Scatter is thus highly dependent on PA selection. This result may be relevant to other TFR works, particularly those aiming for the tightest possible TFR for use as a distance indicator.

## ACKNOWLEDGEMENTS

The SAMI Galaxy Survey is based on observations made at the Anglo-Australian Telescope. The Sydney-AAO Multi-object Integral field spectrograph (SAMI) was developed jointly by the University of Sydney and the Australian Astronomical Observatory. The SAMI input catalogue is based on data taken from the Sloan Digital Sky Survey, the GAMA Survey and the VST ATLAS Survey. The SAMI Galaxy Survey is funded by the Australian Research Council Centre of Excellence for All-sky Astrophysics (CAASTRO), through project number CE110001020, and

other participating institutions. The SAMI Galaxy Survey website is <http://sami-survey.org/>.

GAMA is a joint European-Australasian project based around a spectroscopic campaign using the Anglo-Australian Telescope. The GAMA input catalogue is based on data taken from the Sloan Digital Sky Survey and the UKIRT Infrared Deep Sky Survey. Complementary imaging of the GAMA regions is being obtained by a number of independent survey programmes including GALEX MIS, VST KiDS, VISTA VIKING, WISE, Herschel-ATLAS, GMRT ASKAP providing UV to radio coverage. GAMA is funded by the STFC (UK), the ARC (Australia), the AAO and the participating institutions. The GAMA website is <http://www.gama-survey.org/>.

Support for AMM is provided by NASA through Hubble Fellowship grant #HST-HF2-51377 awarded by the Space Telescope Science Institute, which is operated by the Association of Universities for Research in Astronomy, Inc., for NASA, under contract NAS5-26555.

SMC acknowledges the support of an Australian Research Council Future Fellowship (FT100100457).

MSO acknowledges the funding support from the Australian Research Council through a Future Fellowship (FT140100255).

We thank the referee for their helpful and insightful comments, which clarified and improved the paper.

## REFERENCES

- Allen J. et al., 2015, MNRAS, 446, 1567  
 Barton E. J., Geller M. J., Bromley B. C., van Zee L., Kenyon S. J., 2001, AJ, 121, 625  
 Begum A., Chengalur J. N., Karachentsev I., Sharina M., 2008, MNRAS, 386, 138  
 Bekeraite S. et al., 2016, A&A, 593, A114  
 Bell E. F., de Jong R. S., 2001, ApJ, 550, 212  
 Bertin E., 2011, in Evans I. N., Accomazzi A., Mink D. J., Rots A. H., eds, ASP Conf. Ser. Vol. 442, Astronomical Data Analysis Software and Systems XX. Astron. Soc. Pac., San Francisco, p. 435  
 Bertin E., Arnouts S., 1996, A&AS, 117, 393  
 Bland-Hawthorn J. et al., 2011, Opt. Express, 19, 2649  
 Bloom J. V. et al., 2017, MNRAS, 465, 123  
 Böhm A. et al., 2004, A&A, 420, 97  
 Bradford J. D., Geha M. C., van den Bosch F. C., 2016, ApJ, 832, 11  
 Bryant J., Bland-Hawthorn J., Fogarty L., Lawrence J., Croom S., 2014, MNRAS, 438, 869  
 Bryant J. et al., 2015, MNRAS, 447, 2857  
 Bureau M., Mould J., Staveley-Smith L., 1996, ApJ, 463, 60  
 Callingham J. R. et al., 2015, ApJ, 809, 168  
 Cannon J. M., McClure-Griffiths N. M., Skillman E. D., Côté S., 2004, ApJ, 607, 274  
 Cappellari M., 2002, MNRAS, 333, 400  
 Cortese L., Catinella B., Boissier S., Boselli A., Heinis S., 2011, MNRAS, 415, 1797  
 Cortese L. et al., 2014, ApJ, 795, L37  
 Courteau S., 1997, ApJ, 114, 2402  
 Cresci G. et al., 2009, ApJ, 697, 115  
 Croom S. M. et al., 2012, MNRAS, 421, 872  
 Davis T. A. et al., 2011, MNRAS, 414, 968  
 Driver S. P. et al., 2009, Astron. Geophys., 50, 5  
 Emsellem E., Monnet G., Bacon R., 1994, A&A, 285  
 Fogarty L. et al., 2015, MNRAS, 454, 2050  
 Foreman-Mackey D., Hogg D. W., Lang D., Goodman J., 2013, PASP, 125, 306  
 Garrido O., Marcelin M., Amram P., Balkowski C., Gach J., Boulesteix J., 2005, MNRAS, 362, 127  
 Giovanelli R., Haynes M. P., Herter T., Vogt N. P., da Costa L. N., Freudling W., Salzer J. J., Wegner G., 1997, AJ, 113, 53

- Goodman J., Weare J., 2010, *Commun. Appl. Math. Comput. Sci.*, 5, 65  
 Green A. W. et al., 2013, *MNRAS*, 437, 1070  
 Haynes M. P., Giovanelli R., Chamaraux P., da Costa L. N., Freudling W., Salzer J. J., Wegner G., 1999, *AJ*, 117, 2039  
 Hill D. T. et al., 2011, *MNRAS*, 412, 765  
 Ho I.-T. et al., 2016, *MNRAS*, 457, 1257  
 Kannappan S. J., Fabricant D. G., Franx M., 2002, *AJ*, 123, 2358  
 Kassin S. A., Weiner B., Faber S., Koo D., Lotz J., DEEP2 Team, 2006, *BAAS*, 38, 1160  
 Kelvin L. S. et al., 2012, *MNRAS*, 421, 1007  
 Krajnović D., Cappellari M., De Zeeuw P. T., Copin Y., 2006, *MNRAS*, 366, 787  
 Krajnović D. et al., 2011, *MNRAS*, 414, 2923  
 Lelli F., Verheijen M., Fraternali F., 2014, *A&A*, 566, A71  
 Mahajan S. et al., 2015, *MNRAS*, 446, 2967  
 McGaugh S. S., Schombert J. M., Bothun G. D., De Blok W., 2000, *ApJ*, 533, L99  
 Mocz P., Green A., Malacari M., Glazebrook K., 2012, *MNRAS*, 425, 296  
 Neistein E., Maoz D., Rix H.-W., Tonry J. L., 1999, *AJ*, 117, 2666  
 Nelder J. A., Mead R., 1965, *Comput. J.*, 7, 308  
 Oh S. et al., 2016, *ApJ*, 832, 69  
 Oh S.-H., De Blok W., Brinks E., Walter F., Kennicutt R. C., Jr, 2011, *AJ*, 141, 193  
 Papastergis E., Giovanelli R., Haynes M. P., Shankar F., 2015, *A&A*, 574, A113  
 Percival W. J. et al., 2001, *MNRAS*, 327, 1297  
 Pierce M. J., Tully R., 1992, *ApJ*, 387, 47  
 Pizagno J. et al., 2007, *AJ*, 134, 945  
 Raychaudhury S., von Braun K., Bernstein G. M., Guhathakurta P., 1997, *AJ*, 113, 2046  
 Reyes R., Mandelbaum R., Gunn J., Pizagno J., Lackner C., 2011, *MNRAS*, 417, 2347  
 Roberts M. S., Haynes M. P., 1994, *ARA&A*, 32, 115  
 Sales L. V. et al., 2017, *MNRAS*, 464, 2419  
 Shapiro K. L. et al., 2008, *ApJ*, 682, 231  
 Sharp R. et al., 2006, in McLean I. S., Iye M., eds, *Proc. SPIE Conf. Ser. Vol. 6269, Ground-based and Airborne Instrumentation for Astronomy*. SPIE, Bellingham, p. 62690G  
 Sharp R. et al., 2015, *MNRAS*, 446, 1551  
 Simons R. C., Kassin S. A., Weiner B. J., Heckman T. M., Lee J. C., Lotz J. M., Peth M., Tchernyshyov K., 2015, *MNRAS*, 452, 986  
 Spekkens K., Giovanelli R., Haynes M. P., 2005, *AJ*, 129, 2119  
 Stark D. V., McGaugh S. S., Swaters R. A., 2009, *AJ*, 138, 392  
 Taylor E. N. et al., 2011, *MNRAS*, 418, 1587  
 Tiley A. L. et al., 2016, *MNRAS*  
 Trachternach C., de Blok W., McGaugh S., Van der Hulst J., Dettmar R.-J., 2009, *A&A*, 505, 577  
 Tully R. B., Fisher J. R., 1977, *A&A*, 54, 661  
 Tully R. B., Pierce M. J., 2000, *ApJ*, 533, 744  
 van Zee L., Skillman E. D., Salzer J. J., 1998, *AJ*, 116, 1186  
 York D. G. et al., 2000, *AJ*, 120, 1579  
 Ziegler B. et al., 2001, *ApJ*, 564, L69

This paper has been typeset from a  $\text{\TeX}/\text{\LaTeX}$  file prepared by the author.