

¹State Key Laboratory of Atmospheric Boundary Layer Physics and Atmospheric Chemistry (LAPC), Institute of Atmospheric Physics, Chinese Academy of Sciences, Beijing 100029, China; ²Institute for Atmospheric and Earth System Research, University of Helsinki, Helsinki 00014, Finland; ³China National Environmental Monitoring Center (CNEMC), Beijing 100012, China; ⁴Anhui Institute of Meteorological Sciences, Hefei 230031, China; ⁵State Key Joint Laboratory of Environment Simulation and Pollution Control, Research Center for Eco-Environmental Sciences, Chinese Academy of Sciences, Beijing 100085, China; ⁶Center for Excellence in Regional Atmospheric Environment, Institute of Urban Environment, Chinese Academy of Sciences, Xiamen 361021, China; ⁷State Key Joint Laboratory of Environment Simulation and Pollution Control, School of Environment, Tsinghua University, Beijing 100084, China and ⁸State Key Joint Laboratory of Environmental Simulation and Pollution Control, College of Environmental Sciences and Engineering, Peking University, Beijing 100871, China



*Corresponding authors. E-mails: wys@mail.iap.ac.cn; yzhang@pku.edu.cn

Received 21 June 2019; Revised 18 February 2020;

Accepted 19 February 2020

EARTH SCIENCES

Contrasting trends of PM_{2.5} and surface-ozone concentrations in China from 2013 to 2017

Yonghong Wang ^{1,2}, Wenkang Gao¹, Shuai Wang³, Tao Song¹, Zhengyu Gong³, Dongsheng Ji¹, Lili Wang^{1,2}, Zirui Liu¹, Guiqian Tang ¹, Yanfeng Huo⁴, Shili Tian¹, Jiayun Li¹, Mingge Li¹, Yuan Yang¹, Biwu Chu^{2,5,6}, Tuukka Petäjä², Veli-Matti Kerminen², Hong He^{5,6}, Jiming Hao⁷, Markku Kulmala², Yuesi Wang^{1,6,*} and Yuanhang Zhang^{8,*}

ABSTRACT

Although much attention has been paid to investigating and controlling air pollution in China, the trends of air-pollutant concentrations on a national scale have remained unclear. Here, we quantitatively investigated the variation of air pollutants in China using long-term comprehensive data sets from 2013 to 2017, during which Chinese government made major efforts to reduce anthropogenic emission in polluted regions. Our results show a significant decreasing trend in the PM_{2.5} concentration in heavily polluted regions of eastern China, with an annual decrease of ~7% compared with measurements in 2013. The measured decreased concentrations of SO₂, NO₂ and CO (a proxy for anthropogenic volatile organic compounds) could explain a large fraction of the decreased PM_{2.5} concentrations in different regions. As a consequence, the heavily polluted days decreased significantly in corresponding regions. Concentrations of organic aerosol, nitrate, sulfate, ammonium and chloride measured in urban Beijing revealed a remarkable reduction from 2013 to 2017, connecting the decreases in aerosol precursors with corresponding chemical components closely. However, surface-ozone concentrations showed increasing trends in most urban stations from 2013 to 2017, which indicates stronger photochemical pollution. The boundary-layer height in capital cities of eastern China showed no significant trends over the Beijing–Tianjin–Hebei, Yangtze River Delta and Pearl River Delta regions from 2013 to 2017, which confirmed the reduction in anthropogenic emissions. Our results demonstrated that the Chinese government was successful in the reduction of particulate matter in urban areas from 2013 to 2017, although the ozone concentration has increased significantly, suggesting a more complex mechanism of improving Chinese air quality in the future.

Keywords: air pollution, clean-air action, particulate matter, surface ozone, China, chemical composition

INTRODUCTION

Particulate matter (PM) and ozone are the main pollutants that play important roles in climate change and human health [1–6]. In addition, high concentrations of surface ozone in photochemical pollution have been reported, which weaken net primary production [7–10]. In particular, air-pollution episodes have occurred frequently in the latest decades in China. For example, a series of intensive haze-pollution episodes occurred in eastern China during January of 2013, in which the peak

hourly averaged mass concentration of PM_{2.5} exceeded 500 μg m⁻³ in Beijing and its surroundings [11,12]. High concentrations of aerosol precursors (e.g. volatile organic compounds (VOCs), NO_x, SO₂ and NH₃) and secondary aerosol formation, combined with aerosol and boundary-layer feedback, are considered to be responsible for particle pollution and photochemical pollution [13–16]. A recent review clearly summarized that severe haze formation was a synergetic effect of interactions between anthropogenic emissions and atmospheric

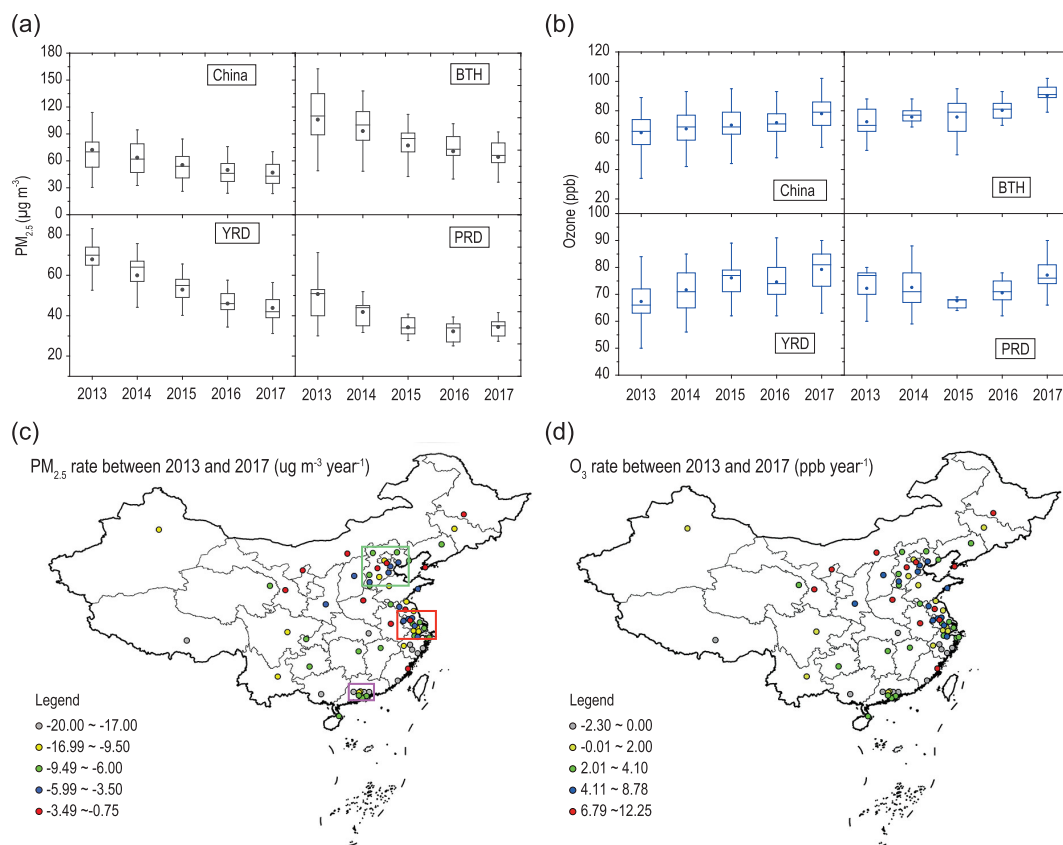


Figure 1. (a) Annual mass concentration of $\text{PM}_{2.5}$ in China, Jing-Jin-Ji (BTH), Yangtze River Delta (YRD) and Pearl River Delta (PRD) from 2013 to 2017. The mass concentrations of $\text{PM}_{2.5}$ were calculated from 74 key cities in China. The upper and lower boundaries of the boxes represent the 75th and 25th percentiles; the line within the box represents the median value; the whiskers above and below the boxes represent the 90th and 10th percentiles; the points within the box represent the mean value. (b) Annual mixing ratio of ozone in China, BTH, YRD and PRD from 2013 to 2017. (c) Variation ratio of $\text{PM}_{2.5}$ concentration in 2017 compared with that in 2013. The BTH region, YRD region and PRD region are marked by green, red and purple squares, respectively. (d) Variation ratio of ozone concentration in 2017 compared with that in 2013.

processes, highlighting that further knowledge about emission sources, physical/chemical mechanisms and interactions with meteorology during haze periods was needed to reveal the causes, mechanisms and trends of haze [17].

From the beginning of 2013, the central government of China took lots of measures to improve the air quality in the Beijing–Tianjin–Hebei (BTH), the Yangtze River Delta (YRD) and the Pearl River Delta (PRD) regions. In particular, the state council announced clean-air action in September of 2013, aiming to reduce concentrations of $\text{PM}_{2.5}$ in BTH, YRD and PRD in the next 5 years by as much as 25%, 20% and 15%, respectively. As a response, the local governments began to take practical action to reduce the primary emissions of both gases and PM. For instance, more strict emission standards for thermal power plants, industry and on-road vehicles were promulgated from 2013 [18]. Moreover, the Ministry of Ecology and Environment of China (MEE) established a monitoring network in order to mea-

sure the spatio-temporal variation in air pollutants. Invited by the MEE and the state council of China, comprehensive evaluation of the variation in air pollutants from 2013 to 2017 was carried out during the year 2018.

In this study, we show the characteristics of the results based on observed data sets from 2013 to 2017. The results will benefit our knowledge about the current air-pollution situation and policymaking for future air-pollution control.

RESULTS

Decreasing trends of $\text{PM}_{2.5}$ concentration but increasing ozone-mixing ratio

Figure 1a shows the annual $\text{PM}_{2.5}$ concentrations in China and in the BTH, YRD and PRD regions. The annual-average concentration of $\text{PM}_{2.5}$ in China, calculated from measurements in 74 cities, was $72.3 \pm 37.4 \mu\text{g m}^{-3}$ in 2013 and the

annual-average concentrations in BTH, PRD and YRD were 106.1 ± 36.7 , 67.5 ± 13.2 and $47.2 \pm 6.6 \mu\text{g m}^{-3}$, respectively. These values are 1.3–3.0 times the threshold value of $35 \mu\text{g m}^{-3}$ suggested by the World Health Organization, which clearly demonstrate a serious particle-matter-pollution problem. However, with the implementation of clean-air action, the annual $\text{PM}_{2.5}$ concentration in China decreased significantly from 72.3 ± 37.4 to $47.4 \pm 20.6 \mu\text{g m}^{-3}$, the most significant decrease being observed in the BTH region, where the annual-average $\text{PM}_{2.5}$ concentration decreased by about 40% from 106.1 to $64.3 \mu\text{g m}^{-3}$. Among the three regions in eastern China, the PRD region has the lowest $\text{PM}_{2.5}$ concentration and, accordingly, showed also the lowest percentage of $\text{PM}_{2.5}$ reduction due to the respective small capability of emission reduction. Figure 1c shows the absolute decrease in concentrations from 2013 to 2017 in different cities in China. The most significant reduction of $\text{PM}_{2.5}$ concentration also in the absolute sense occurred in the BTH region, with the decrease rate being around $4\text{--}20 \mu\text{g m}^{-3}$ per year. The maximum 8-hour-average 90-percentile (M8A90) ozone-mixing ratio is suggested by the MEE of China to characterize the statistic potential damage of ozone. Figure 1b shows that the annual-average M8A90 in China, BTH, YRD and PRD was equal to 64.3 ± 13.2 , 70.4 ± 10.6 , 62.4 ± 9.6 and 71.2 ± 9.8 ppb, respectively, in 2013 and that this quantity increased to 77.4 ± 12.6 , 91.5 ± 8.7 , 76.2 ± 8.4 and 77.3 ± 6.5 ppb in 2017, respectively. As shown in Fig. 1d, the most significant increase in M8A90 occurred in BTH and YRD, the rate increase being in the range of $3\text{--}12$ ppb per year. Spatially, it seems that the increases in ozone concentrations coincided with the decreases in $\text{PM}_{2.5}$ concentrations. Compared with the global distribution of surface ozone, Lu *et al.* [7] have demonstrated that the 4MDA8 (the fourth-highest daily maximum 8-hour average) and Perc98 (98th percentile of hourly concentrations) ozone concentrations were 86.0 ± 14.7 and 80.7 ± 14.1 ppb in China during 2013–2017, which are 20–25% higher than the average values in Europe and the USA.

Decreasing aerosol-precursor gas concentrations based on field measurements

Differently from the concurrently decreasing $\text{PM}_{2.5}$ and surface ozone in developed countries, such as the USA, significant increases in surface-ozone concentrations took place along with reductions in $\text{PM}_{2.5}$ concentrations in corresponding regions in

China (e.g. BTH) [19]. Since simultaneous VOC measurements on a national scale are lacking, it is difficult to estimate trends in VOC concentrations over the period 2013–2017. However, considering the similar sources of anthropogenic VOCs and CO, the variability in the CO concentration can be used as a proxy for the variability in anthropogenic VOC concentrations in a specific region [20]. This proxy approach was earlier applied to the analysis of the ozone weekend effect in North China Plain [2]. As shown in Fig. 2a, the CO concentrations in 2013 were equal to 1.0 ± 0.4 , 1.4 ± 0.3 , 0.8 ± 0.2 and 0.8 ± 0.2 ppm in China, BTH, YRD and PRD, respectively. These concentrations decreased to 0.7 ± 0.3 , 1.1 ± 0.3 , 0.7 ± 0.1 and 0.7 ± 0.1 ppm in 2017, the corresponding percentages of the decrease being 30%, 21%, 12% and 12%.

The SO_2 concentrations in 2013 were equal to 14.1 ± 8.2 , 24.8 ± 11.2 , 10.7 ± 3.0 and 7.2 ± 2.4 ppb in China, BTH, YRD and PRD, respectively, decreasing to 5.5 (12%), 8.0 (13%), 4.1 (13%) and 3.2 ppb (11%) in 2017. As presented in Fig. 2b, the reduction was most significant in BTH, with the rate of decrease at ~ 4 ppb per year. SO_2 emissions come mainly from coal combustion in power plants and residential heating, so the reduction in SO_2 concentrations should be driven by the decreased emissions of these factors [18,21]. Previous studies have suggested that sulfate is an important component in $\text{PM}_{2.5}$, with an average mass fraction of around 18% in urban cities in China [22]. Therefore, the reduction in SO_2 may explain the reduction in $\text{PM}_{2.5}$ concentration to some extent. As a main precursor of nitrate aerosol, the NO_2 concentrations in 2013 were equal to 21.6 ± 5.2 , 25.1 ± 5.0 , 21.3 ± 3.8 and 22.2 ± 3.1 ppb in China, BTH, YRD and PRD, respectively (Fig. 2c). These concentrations decreased to 19.2 ± 4.1 , 22.5 ± 4.7 , 18.2 ± 3.2 and 18.1 ± 2.7 ppb in 2017, respectively, the corresponding percentages of the decreases being equal to 11%, 10%, 15% and 18%. Due to the high number of on-road vehicles and vast emissions of NO_x [21], it is still a challenge to reduce NO_2 and nitrate aerosol concentrations in China. Moreover, the interaction between NO_2 and SO_2 could lead to enhanced production of the sulfate aerosol [23,24]; therefore, we suggest that a reduction in NO_x emissions is urgent for improving the air quality, especially from industry and vehicles rather than power sectors.

DISCUSSION

We suppose that the decreased concentration of $\text{PM}_{2.5}$ should be related to decreased aerosol-precursor gas concentrations. VOCs, NO_2 and SO_2 are generally considered as precursors of organic,

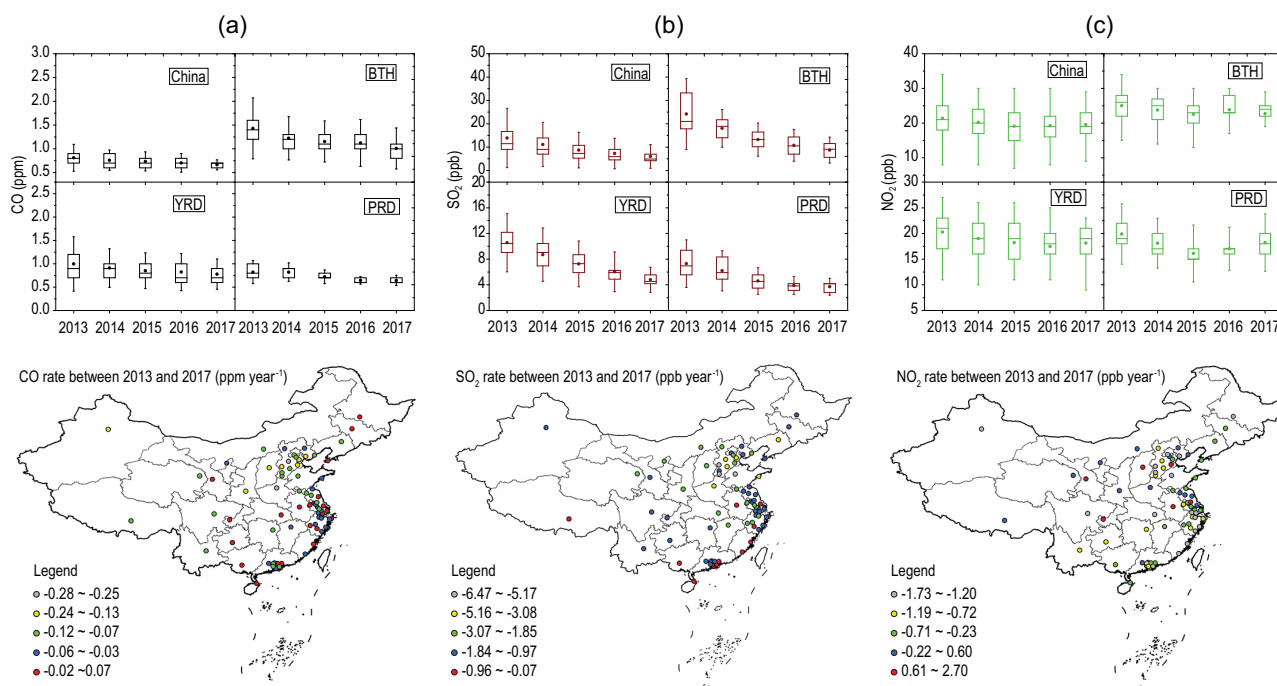


Figure 2. Annual mixing ratio and variation of CO (a), SO₂ (b) and NO₂ (c) in China, BTH, YRD and PRD from 2013 to 2017. The mixing ratios were calculated from 74 key cities in China. The upper and lower boundaries of the boxes represent the 75th and 25th percentiles; the line within the box represents the median value; the whiskers above and below boxes represent the 90th and 10th percentiles; the points within the box represent the mean value. The differences between the mixing ratios at 74 cities in 2017 were compared with those in 2013.

nitrate and sulfate components in aerosols, respectively [25]. To illustrate how aerosol chemical composition varies with the various aerosol-precursor gas concentration, we take our long-term aerosol composition measurements in urban Beijing as an example. The field measurements showed that the annual-average mass concentrations of organic aerosol, nitrate, sulfate, ammonium and chloride, remarkably decreased between 2013 and 2017 (Fig. 3), consistent with the significant decrease in PM_{2.5} on a regional scale. Considering specifically the heating periods responsible for frequent air-pollution episodes in Beijing during the past decades [26], we can see that the organic aerosol, nitrate, sulfate, ammonium and chloride concentrations in NR-PM₁ decreased during the heating periods between 2013 and 2017 (Fig. 4). While the mass concentration of these compounds decreased considerably from 2013 to 2017, their mass fractions did not show similarly large changes. The mass fractions of sulfate and chloride decreased from 18.4% to 11.4% and from 3.9% to 3.3%, respectively, whereas the mass fractions of both nitrate and ammonium increased from 16.4% to 20.0% and from 10.7% to 11.6%, respectively.

The formation of surface ozone is determined by VOC and NO_x concentration and by the intensity of UV radiation [27]. The increased

surface-ozone concentrations may result from the increased UV radiation, which could photolysis more NO₂ into NO and consequently increase ozone formation. Hu *et al.* [28] found that the solar-radiation intensity increased by 1.93 W m⁻² per year between 2005 and 2015 in Beijing, while the PM_{2.5} concentration showed a decreasing trend. The increased solar radiation, especially ultraviolet radiation, due to decreasing PM_{2.5} concentrations likely explains the increased ozone concentrations to some extent. It is also worth noting that the anthropogenic VOC (CO as proxy) decreases have been larger than those of NO₂ over most regions of eastern China. Changes in the VOCs/NO_x ratio and its spatial variability may provide useful insights into the ozone-formation mechanisms over different regions [2]. A study found that the increment of summertime surface ozone was caused by decreased uptake of HO₂ in the aerosol phase using the GEOS-Chem model in China [29]. Also, a very recent model study indicated that both VOCs and NO_x are important for rural ozone formation during August of 2013 in North China [30]. Considering the complexity of photochemical control, we suggest that detailed chemical and physical processes leading to increased surface-ozone concentration on a regional scale warrant further investigation both from model simulations and field observations.

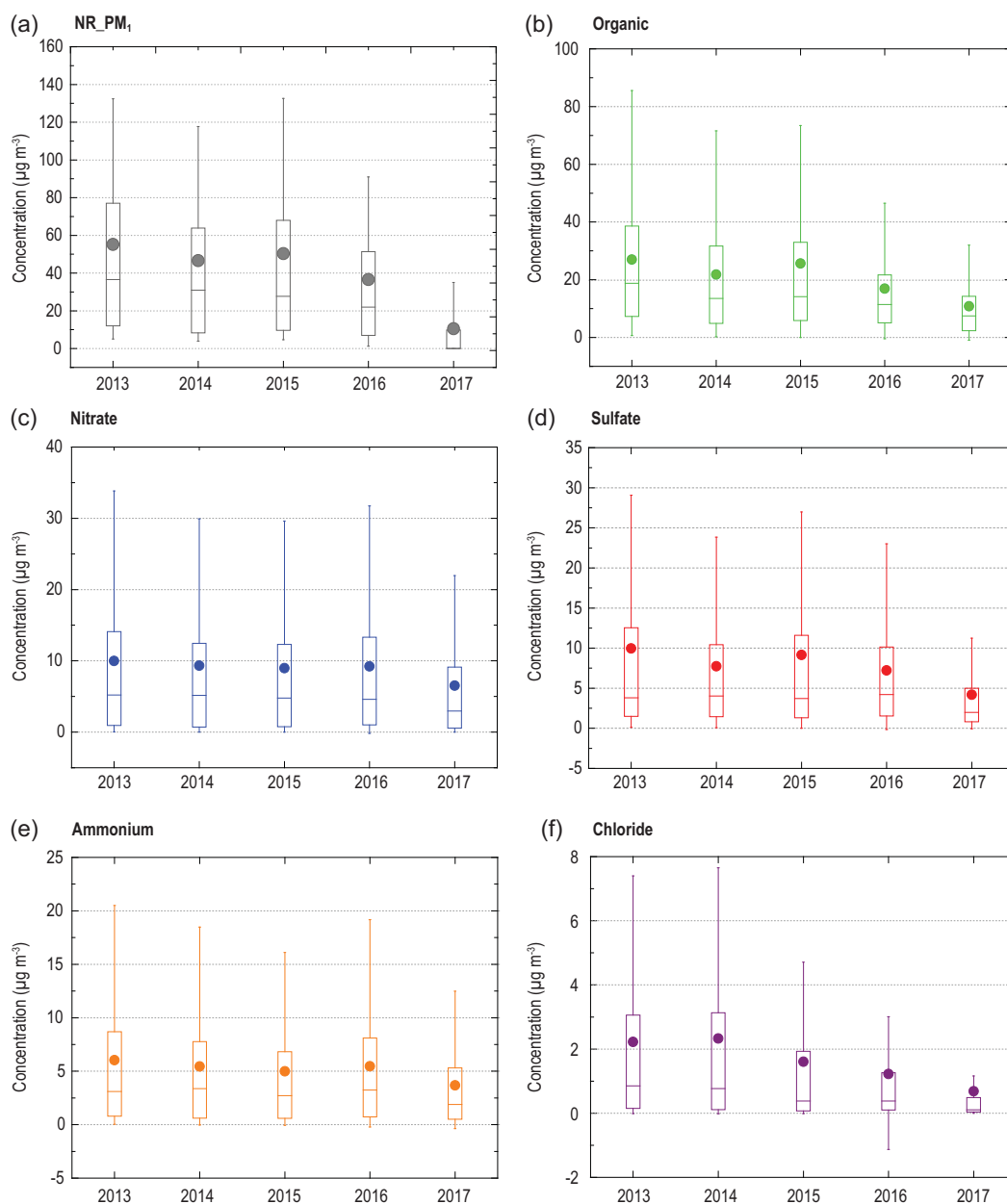


Figure 3. Annual mass concentrations of NR-PM₁ (a), organic (b), nitrate (c), sulfate (d), ammonium (e) and chloride (f) in urban Beijing by HR-ToF-AMS from 2013 to 2017. The upper and lower boundaries of the boxes represent the 75th and 25th percentiles; the line within the box represents the median value; the whiskers above and below the boxes represent the 90th and 10th percentiles; the points within the box represent the mean value. Note that the annual mass concentrations were calculated from different periods during a year, since AMS was not always working. The period with measurement is shown in the Supplementary Data. The annual-average mass concentrations of organic, nitrate, sulfate, ammonium and chloride were 27.0 ± 26.2 , 10.0 ± 12.2 , 10.1 ± 14.6 , 6.1 ± 7.2 and $2.2 \pm 3.1 \mu\text{g m}^{-3}$, respectively, in 2013 and decreased to 10.8 ± 12.5 , 6.5 ± 8.6 , 4.2 ± 6.2 , 3.7 ± 4.5 and $0.7 \pm 1.4 \mu\text{g m}^{-3}$, respectively, in 2017.

In order to get insight into how PM_{2.5} concentration reductions affected the frequency of air-pollution episodes, we finally investigated the temporal evolution of heavily polluted days (HPDs), defined as daily PM_{2.5} mass concentration $>150 \mu\text{g m}^{-3}$ (see Fig. 5). HPDs were rather frequent in 2013, with an average of 32 days over

China. In the BTH region, nearly 20% of total days (74 days) were heavily polluted in 2013, followed by the YRD region (32 days). The PRD region had the most days with daily PM_{2.5} concentration $<150 \mu\text{g m}^{-3}$, with only 1 HPD. The number of HPDs decreased significantly from 2013 to 2017, having values of 8, 24, 4 and 0 in China,

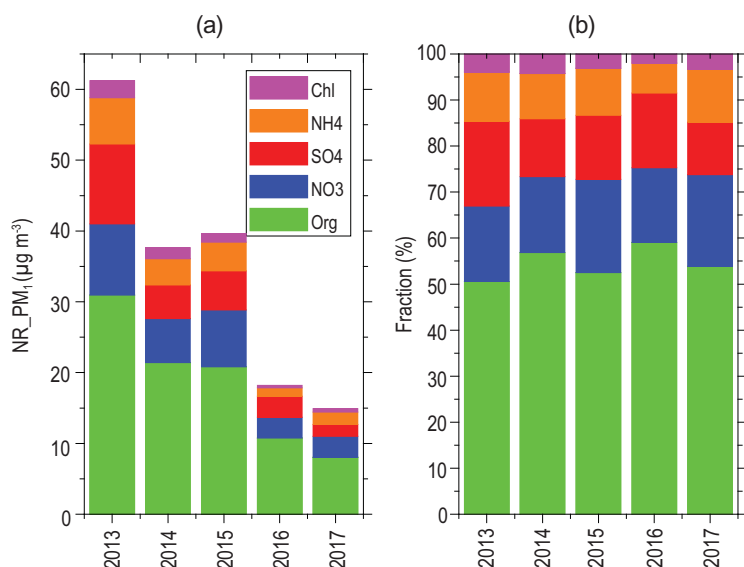


Figure 4. Variation of (a) mass concentration in NR-PM₁ and (b) mass fraction of organic, nitrate, sulfate, ammonium and chloride during heating seasons from 2013 to 2017.

BTH, YRD and PRD, respectively, in 2017. We assign a significant fraction of the reduced HPD to emission reductions, even though variations in the meteorology parameters may also have contributed to the observed trend, as reported earlier for Beijing [31].

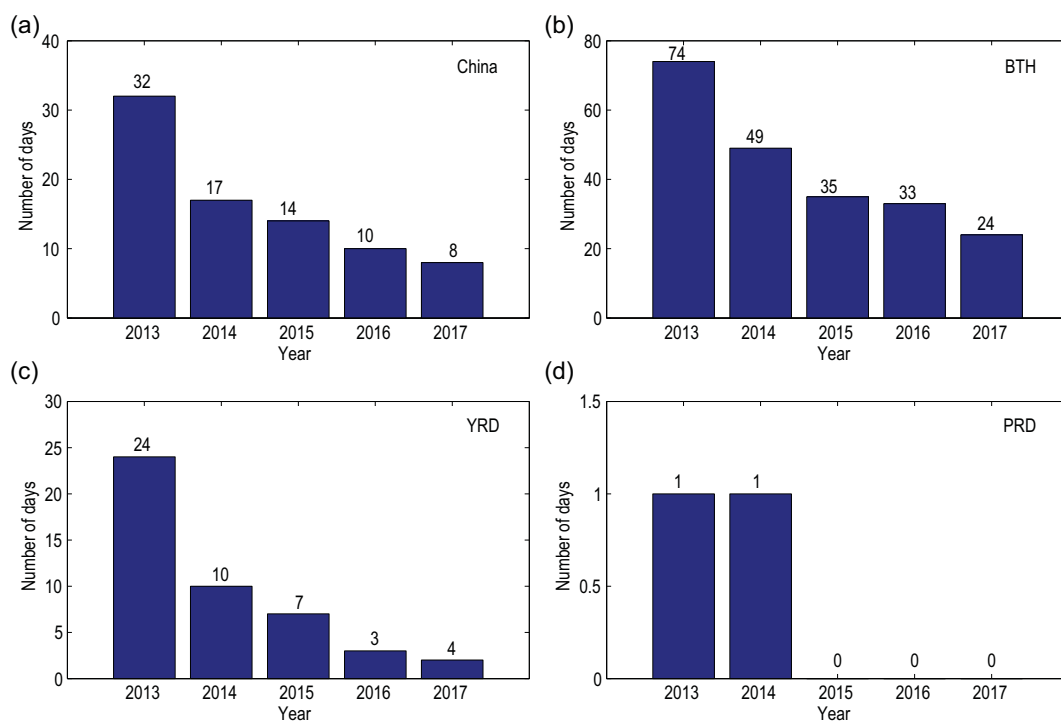


Figure 5. Annual variation of heavily polluted days (HPDs) over (a) China, (b) BTH, (c) YRD and (d) PRD regions. The PM_{2.5} concentrations at 74 main cities were used in the statistics. A heavily polluted day is defined as a daily averaged PM_{2.5} concentration $> 150 \mu\text{g m}^{-3}$ in the region.

Boundary-layer height (BLH) is a critical parameter that influences the concentrations of air pollutants [32]. To further investigate the impact of meteorology conditions on PM_{2.5} and ozone, we studied the variation of BLH from ERA-interim data from 2013 to 2017. As shown in Fig. 6, the monthly variation in BLH slightly decreased over China, YRD and PRD, while an increased trend occurred in the BTH region. However, the trends were not significant, as shown in Fig. 6. The highest increases in BLH over the BTH region since 2013 were, to some extent, due to the reduction in PM, which favored the development of BLH via increased solar radiation reaching the surface. For the other regions, the variation in BLH may be influenced by meteorology parameters and air-pollution and urban-heat island [33]. In a word, the variation in BLH from 2013 to 2017 was not the driving factor that led to decreased PM_{2.5} concentrations in eastern China, since BLH did not show significant variations as PM_{2.5} and surface ozone.

The comprehensive evaluation of PM_{2.5} mass concentrations and O₃-mixing ratios in China from 2013 to 2017 clearly shows that the PM_{2.5} concentration significantly decreased in eastern China from 72 to 47 $\mu\text{g m}^{-3}$, while the maximum average O₃ daily concentration at the 90th percentile showed increasing trends, with the mixing ratio changing from 64 to 79 ppb. In addition, the concentrations of

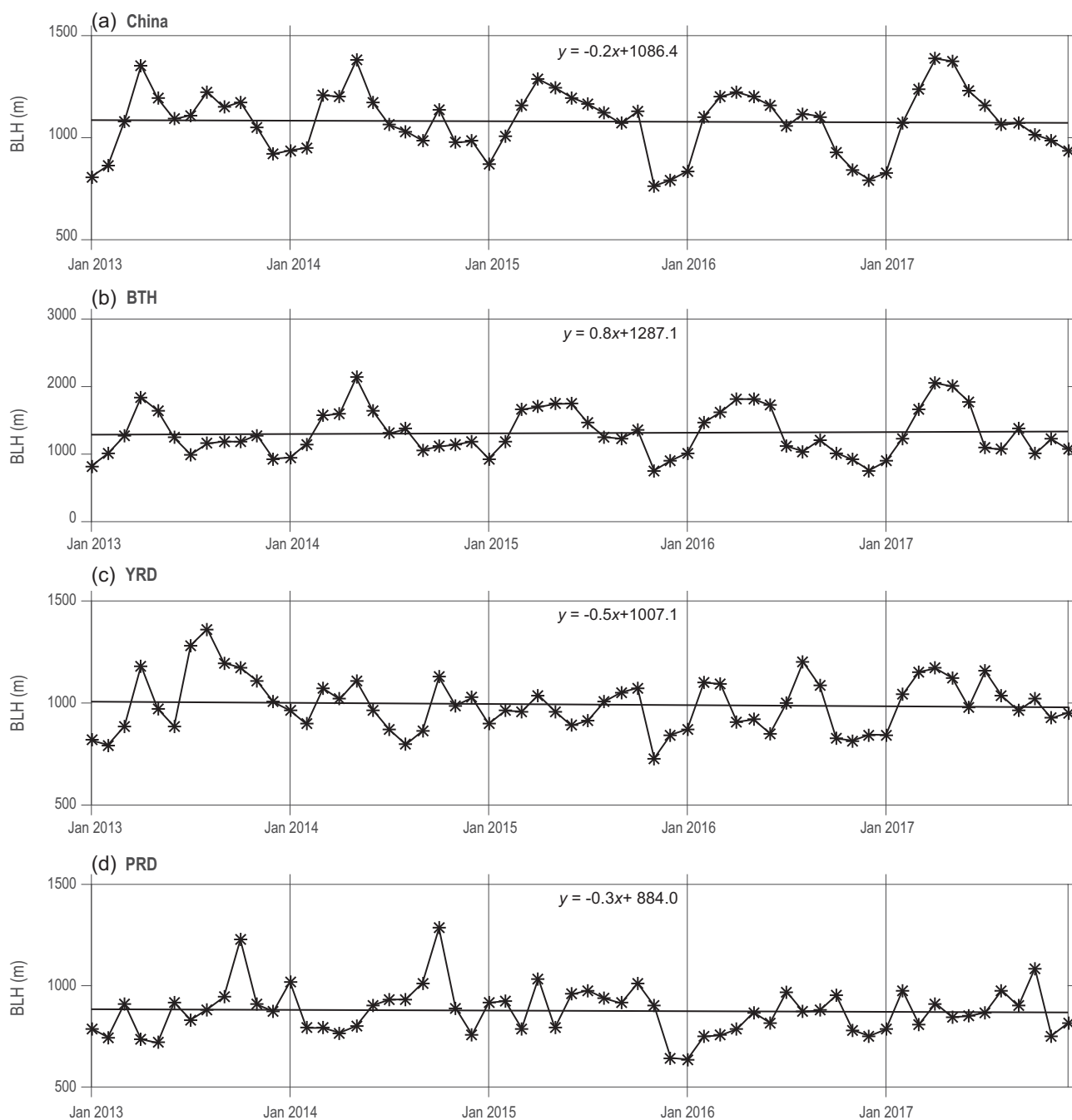


Figure 6. Monthly variation of BLH over (a) China, (b) BTH, (c) YRD and (d) PRD regions from 2013 to 2017.

NO_2 , SO_2 and CO decreased. Field-measurement data in urban Beijing showed decreased concentrations of organic aerosol, nitrate and sulfate, and that the decreased aerosol components were closely related to changes in their precursor gas concentrations. Especially in the BTH region, the concentration decreases in these components clearly suggests that the clean-air action starting from 2013 has decreased atmospheric PM pollution significantly due to strict emission controls. However, the level of photochemical pollution, measured in terms of

the ozone concentration, has gradually increased in urban areas. Our results suggest that more research and attention should be put on photochemical pollution, as well as on PM pollution, in the future.

METHODS AND MATERIALS

The data were obtained from the Chinese National Environmental Monitoring Center (<http://113.108.142.147:20035/emcpublish>). The

PM_{2.5} mass concentrations were measured using TEOM RP1405 (Thermo Scientific, <http://www.thermoscientific.com>). The resolution and precision of the instrument for 1 hour were 0.1 and $\pm 1.5 \mu\text{g m}^{-3}$, respectively. The filters were exchanged and the flow ratio was monitored and calibrated routinely. The volume mixing ratios of ozone, SO₂, NO₂ and CO were measured using 49i, 43i, 42i and 48i (Thermal Environment Instruments (TEI) Inc.), respectively. The mixing ratio of the gas pollutants was calculated under standard conditions. A high-resolution time-of-flight aerosol mass spectrometer was deployed in urban Beijing to measure the chemical compositions of non-refractory submicron aerosol [34]. The campaign periods during each year are listed in the Supplementary Data file. The mass concentrations of organic, nitrate, sulfate, ammonium and chloride were recorded and averaged over 1 hour for further analysis. The ERA-interim reanalyses are assimilated results including model product and various measurements [35]. Its model-layers data contain 60 vertical layers (starting about 25 m from the surface, decreasing to about 500 m around 500 hPa), which has been used to calculate boundary-layer heights [36]. The reanalysis data with a horizontal resolution of $0.75^\circ \times 0.75^\circ$ and a time resolution of 6 hours were used for BLH calculation and then we interpolated the BLHs to 26 city sites.

SUPPLEMENTARY DATA

Supplementary data are available at [NSR](#) online.

FUNDING

This work was supported by the Ministry of Science and Technology of China (2017YFC0210000), the National Research Program for Key Issues in Air-pollution Control (DQGG0101), and the Beijing Major Science and Technology Project (Z181100005418014).

AUTHOR CONTRIBUTIONS

Y.H.Z. and Y.S.W. initiated the study. Z.Y.G. and S.W. conducted the longtime measurements and provided the data. Y.H.W., W.K.G., T.S., Y.S.W. and Y.H.Z. interpreted the data. Y.H.W. plotted the figures and wrote the manuscript with contributions from co-authors.

Conflict of interest statement. None declared.

REFERENCES

- Ding AJ, Huang X and Nie W *et al.* Enhanced haze pollution by black carbon in megacities in China. *Geophys Res Lett* 2016; **43**: 2873–9.

- Wang YH, Hu B and Ji DS *et al.* Ozone weekend effects in the Beijing-Tianjin-Hebei metropolitan area, China. *Atmos Chem Phys* 2014; **14**: 2419–29.
- Zhang Q, Jiang X and Tong D *et al.* Transboundary health impacts of transported global air pollution and international trade. *Nature* 2017; **543**: 705–9.
- Lelieveld J, Evans JS and Fnais M *et al.* The contribution of outdoor air pollution sources to premature mortality on a global scale. *Nature* 2015; **525**: 367–71.
- Wang X, Huang J and Zhang R *et al.* Surface measurements of aerosol properties over northwest China during ARM China 2008 deployment. *J Geophys Res* 2010; **115**: D00K27.
- Peng J, Hu M and Guo S *et al.* Markedly enhanced absorption and direct radiative forcing of black carbon under polluted urban environments. *Proc Natl Acad Sci USA* 2016; **113**: 4266–71.
- Lu X, Hong J and Zhang L *et al.* Severe surface ozone pollution in China: a global perspective. *Environ Sci Technol Lett* 2018; **5**: 487–94.
- Yue X, Unger N and Harper K *et al.* Ozone and haze pollution weakens net primary productivity in China. *Atmos Chem Phys* 2017; **17**: 6073–89.
- Ma Z, Xu J and Quan W *et al.* Significant increase of surface ozone at a rural site, north of eastern China. *Atmos Chem Phys* 2016; **16**: 3969–77.
- Wang Y, Hu B and Tang G *et al.* Characteristics of ozone and its precursors in Northern China: a comparative study of three sites. *Atmos Res* 2013; **132–133**: 450–9.
- Wang YS, Yao L and Wang LL *et al.* Mechanism for the formation of the January 2013 heavy haze pollution episode over central and eastern China. *Sci China Earth Sci* 2014; **57**: 14–25.
- Huang R-J, Zhang Y and Bozzetti C *et al.* High secondary aerosol contribution to particulate pollution during haze events in China. *Nature* 2014; **514**: 218–22.
- Wang Y, Wang Y and Wang L *et al.* Increased inorganic aerosol fraction contributes to air pollution and haze in China. *Atmos Chem Phys* 2019; **19**: 5881–8.
- Pan Y, Tian S and Liu D *et al.* Fossil fuel combustion-related emissions dominate atmospheric ammonia sources during severe haze episodes: evidence from ¹⁵N-stable isotope in size-resolved aerosol ammonium. *Environ Sci Technol* 2016; **50**: 8049–56.
- Wang G, Zhang R and Gomez ME *et al.* Persistent sulfate formation from London fog to Chinese haze. *Proc Natl Acad Sci USA* 2016; **113**: 13630–5.
- Guo S, Hu M and Zamora ML *et al.* Elucidating severe urban haze formation in China. *Proc Natl Acad Sci USA* 2014; **111**: 17373–8.
- An Z, Huang R-J and Zhang R *et al.* Severe haze in northern China: a synergy of anthropogenic emissions and atmospheric processes. *Proc Natl Acad Sci USA* 2019; **116**: 8657–66.
- Zheng B, Tong D and Li M *et al.* Trends in China's anthropogenic emissions since 2010 as the consequence of clean air actions. *Atmos Chem Phys* 2019; **18**: 14095–111.
- Zhang Y, Cooper OR and Gaudel A *et al.* Tropospheric ozone change from 1980 to 2010 dominated by equatorward redistribution of emissions. *Nat Geosci* 2016; **9**: 875–9.

20. Baker AK, Beyersdorf AJ and Doezema LA *et al.* Measurements of non-methane hydrocarbons in 28 United States cities. *Atmos Environ* 2008; **42**: 170–82.
21. Lu Z, Streets DG and Zhang Q *et al.* Sulfur dioxide emissions in China and sulfur trends in East Asia since 2000. *Atmos Chem Phys* 2010; **10**: 6311–31.
22. Liu Z, Gao W and Yu Y *et al.* Characteristics of PM_{2.5} mass concentrations and chemical species in urban and background areas of China: emerging results from the CARE-China network. *Atmos Chem Phys* 2018; **18**: 8849–71.
23. Ma J, Chu B and Liu J *et al.* NO_x promotion of SO₂ conversion to sulfate: an important mechanism for the occurrence of heavy haze during winter in Beijing. *Environ Pollut* 2018; **233**: 662–9.
24. He H, Wang Y and Ma Q *et al.* Mineral dust and NO_x promote the conversion of SO₂ to sulfate in heavy pollution days. *Sci Rep* 2014; **4**: 4172.
25. Zhang R, Wang G and Guo S *et al.* Formation of urban fine particulate matter. *Chem Rev* 2015; **115**: 3803–55.
26. Quan J, Zhang Q and He H *et al.* Analysis of the formation of fog and haze in North China Plain (NCP). *Atmos Chem Phys* 2011; **11**: 8205–14.
27. Seinfeld JH and Pandis SN. *Atmospheric Chemistry and Physics: from Air Pollution to Climate Change*. New York: Wiley, 1998.
28. Hu B, Zhao X and Liu H *et al.* Quantification of the impact of aerosol on broadband solar radiation in North China. *Sci Rep* 2017; **7**: 44851.
29. Li K, Jacob DJ and Liao H *et al.* Anthropogenic drivers of 2013–2017 trends in summer surface ozone in China. *Proc Natl Acad Sci USA* 2019; **116**: 422–7.
30. Wang P, Chen Y and Hu J. Attribution of tropospheric ozone to NO_x and VOC emissions: considering ozone formation in the transition regime. *Environ Sci Technol* 2019; **53**: 1404–12.
31. Cheng J, Su J and Cui T *et al.* Dominant role of emission reduction in PM_{2.5} air quality improvement in Beijing during 2013–2017: a model-based decomposition analysis. *Atmos Chem Phys* 2019; **19**: 6125–46.
32. Petäjä T, Järvi L and Kerminen VM *et al.* Enhanced air pollution via aerosol-boundary layer feedback in China. *Sci Rep* 2016; **6**: 18998.
33. Guo J, Li Y and Cohen JB *et al.* Shift in the temporal trend of boundary layer height in China using long-term (1979–2016) radiosonde data. *Geophys Res Lett* 2019; **46**: 6080–9.
34. DeCarlo PF, Kimmel JR and Trimborn A *et al.* Field-deployable, high-resolution, time-of-flight aerosol mass spectrometer. *Anal Chem* 2006; **78**: 8281–9.
35. Dee DP, Uppala SM and Simmons AJ *et al.* The ERA-Interim reanalysis: configuration and performance of the data assimilation system. *Q J R Meteorol Soc* 2011; **137**: 553–97.
36. Guo J, Miao Y and Zhang Y *et al.* The climatology of planetary boundary layer height in China derived from radiosonde and reanalysis data. *Atmos Chem Phys* 2016; **16**: 13309–19.