

# In-Hospital 30-Day Survival Among Young Adults With Coronavirus Disease 2019: A Cohort Study

Safiya Richardson,<sup>1,2</sup> Jordan Gitlin,<sup>2</sup> Zachary Kozei,<sup>2</sup> Sera Levy,<sup>1</sup> Husnara Rahman,<sup>4</sup> Jamie S. Hirsch,<sup>1,2,3</sup> Thomas McGinn,<sup>1,2</sup> and Michael A. Diefenbach<sup>1,2,\*</sup>

<sup>1</sup>Institute of Health System Science, Feinstein Institutes for Medical Research, Northwell Health, Manhasset, New York, USA, <sup>2</sup>Donald and Barbara Zucker School of Medicine at Hofstra/Northwell, Northwell Health, Hempstead, New York, USA, <sup>3</sup>Department of Information Services, Northwell Health, New Hyde Park, New York, USA, <sup>4</sup>Biostatistics Unit, Feinstein Institutes for Medical Research, Northwell Health, Great Neck, New York, USA

**Background.** Our objective was to characterize young adult patients hospitalized with coronavirus disease 2019 (COVID-19) and identify predictors of survival at 30 days.

**Methods.** This retrospective cohort study took place at 12 acute care hospitals in the New York City area. Patients aged 18–39 hospitalized with confirmed COVID-19 between March 1 and April 27, 2020 were included in the study. Demographic, clinical, and outcome data were extracted from electronic health record reports.

**Results.** A total of 1013 patients were included in the study (median age, 33 years; interquartile range [IQR], 28–36; 52% female). At the study end point, 940 (92.8%) patients were discharged alive, 18 (1.8%) remained hospitalized, 5 (0.5%) were transferred to another acute care facility, and 50 (4.9%) died. The most common comorbidities in hospitalized young adult patients were obesity (51.2%), diabetes mellitus (14.8%), and hypertension (13%). Multivariable analysis revealed that obesity (adjusted hazard ratio [aHR], 2.71; 95% confidence interval [CI], 1.28–5.73;  $P = .002$ ) and Charlson comorbidity index score (aHR, 1.20; 95% CI, 1.07–1.35;  $P = .002$ ) were independent predictors of in-hospital 30-day mortality.

**Conclusions.** Obesity was identified as the strongest negative predictor of 30-day in-hospital survival in young adults with COVID-19.

**Keywords.** coronavirus disease 2019 (COVID-19); mortality; severe acute respiratory syndrome coronavirus 2 (SARS-CoV-2); young adults.

On December 31, 2019, the World Health Organization was notified about the condition that would later be named coronavirus disease (COVID-19) [1, 2]. Estimates of severe disease range from 20% to 30% with case fatality rates ranging from 2% to 7% [3–5]. The majority of deaths due to COVID-19 have been in patients over 65 years old, who are also more likely to be hospitalized and require treatment in intensive care units [5]. However, this disease has not only afflicted the elderly; young adults are 41% of total COVID-19 cases in both the United States and in New York City in particular [6, 7].

Predictors of mortality for patients of all age groups with COVID-19 have been identified in several studies. Consistent predictors include older age, male sex, and comorbidities, such as hypertension, cardiovascular disease, and diabetes [8–13]. Studies have also noted obesity as a significant predictor of

severe illness, particularly hospitalization [14–16]. Although these factors may increase mortality risk in young adults, our understanding of COVID-19 in this age group is limited. One research letter describing the clinical outcomes of hospitalized young adults with COVID-19 indicated a mortality rate of 2.7%, with obesity being the strongest risk factor for adverse events [17]. Well founded concerns about a second wave of COVID-19 and evidence of shifts in differential mortality by demographics in previous pandemics are among many reasons why we must understand predictors of risk and survival in this age group [18–21].

Our objective was to characterize hospitalized patients aged 18 to 39 and define predictors of 30-day survival in these young adults. In addition, we characterize hospitalized, college-aged (18 to 24 years) patients. This group is of particular interest considering the inherent infectious disease risk associated with the close social contact that is typical in most college and university settings; more than 12 million individuals worldwide attend college or university every year. Such settings carry significant risk of rapid spread and potential severe disease and mortality [22].

## METHODS

This retrospective cohort study was conducted at 12 hospitals within Northwell Health, the largest academic health

Received 11 November 2020; editorial decision 3 May 2021; accepted 5 May 2021.

Correspondence: Michael Diefenbach, PhD, 600 Community Drive, Suite 403, Manhasset, NY 11030 (mdiefenbach@northwell.edu).

Open Forum Infectious Diseases® 2021

© The Author(s) 2021. Published by Oxford University Press on behalf of Infectious Diseases Society of America. This is an Open Access article distributed under the terms of the Creative Commons Attribution-NonCommercial-NoDerivs licence (<http://creativecommons.org/licenses/by-nc-nd/4.0/>), which permits non-commercial reproduction and distribution of the work, in any medium, provided the original work is not altered or transformed in any way, and that the work is properly cited. For commercial re-use, please contact journals.permissions@oup.com  
DOI: 10.1093/ofid/ofab233

system in New York. These acute care facilities are located throughout New York City and the surrounding suburbs of Long Island and Westchester County. The Northwell Health Institutional Review Board approved this study as minimal-risk research using data collected for routine clinical practice and therefore waived the requirement for informed consent. Previous studies have used portions of this cohort of patients; however, none examined predictors of mortality in young adults [23–25]. The study included patients aged 18 to 39 who were sufficiently medically ill to require hospital admission with confirmed severe acute respiratory syndrome coronavirus 2 infection by nasopharyngeal polymerase chain reaction testing. The study includes consecutively admitted patients between March 1, 2020 and April 27, 2020. The last day of follow-up was May 12, 2020. Pregnant patients with a length of stay of 2 days or less were excluded from the study. These patients were admitted for labor and delivery after asymptomatic screening for COVID-19.

### Data Collection

Data were collected from the enterprise electronic health record ([EHR] Sunrise Clinical Manager, Allscripts, Chicago, IL) reporting database. Transfers from one in-system hospital to another were merged and considered as 1 visit. Transfers out of the system to another acute care facility were considered censored at transfer date. These transfers were conducted to offload high-census hospitals during the peak of the epidemic. Data collected included patient demographic information (age, sex, race, ethnicity, insurance type), body mass index (BMI), smoking status, comorbidities (as captured in the database by International Classification of Disease designation), and outcomes including discharge, length of stay, and death. Body mass index was categorized into 2 groups: obese (including all those with a BMI greater than or equal to 30) and nonobese (all those with a BMI less than 30). Body mass index was recorded for 954 (94.2%) of the patients in the study. Race and ethnicity are recorded by patient self-report in specified categories.

Charlson comorbidity index (CCI) was calculated for all patients in the cohort. The CCI predicts 10-year survival probability for patients with multiple comorbidities and was used as a measure of total comorbid burden [26]. Comorbidities in the 16-item CCI include, for example, diabetes, cancer, and congestive heart disease. As the accumulated CCI score increases, the estimated 10-year survival rate decreases. The lowest score of zero on this index typically translates to an estimated 98% 10-year survival rate in general, whereas a score of 7 points and above corresponds to a 0% 10-year survival rate.

### Data Analysis

Summary statistics were calculated for the comparison of baseline characteristics and reported as median, along with interquartile range (IQR) or counts with percentages for each category as

appropriate. For in-hospital survival, we used the Kaplan-Meier survival curve and extended Cox model, which is an extension of Cox proportional hazards regression model for time-dependent covariates [27]. Age, sex, race, ethnicity, insurance type, obesity, asthma, hypertension, smoking status, and CCI score were included as covariates in the original model. Obesity, asthma, and hypertension were included in the model in addition to CCI score because these medical conditions are not included in the CCI and have been of particular interest in COVID-19. A backward elimination procedure removed sex, hypertension, asthma, smoking status, and insurance type from the final model. Interaction term for Other race with time was included in the model to incorporate violation of proportionality assumption of these 2 covariates. Data analysis was performed using the statistical software SAS v9.4 (SAS institute, Inc., Cary, NC). Results were considered significant if the corresponding *P* value was less than .05.

## RESULTS

A total of 1052 patients between the ages of 18 and 39 were admitted during the study period. Of these, 1013 patients were included in the study (median age, 33 years; IQR, 28–36; 52% female) and 39 patients were excluded as those admitted for less than 2 days for labor and delivery after asymptomatic screening for COVID-19. Of the 1013 patients included in the study, 940 (92.8%) were discharged alive, 18 (1.8%) remained hospitalized, 5 (0.5%) were transferred to another acute care facility, and 50 (4.9%) died by the study end point. Participant demographics and comorbidities are presented in Table 1.

Median length of stay was 3.85 days (IQR, 2.17–7.18) for all patients: 3.67 days (IQR, 2.13–6.88) for patients discharged alive and 11.84 days (IQR, 4.31–18.93) for those who died. The most prevalent age group was 32 to 39. The most common comorbidities for hospitalized patients were obesity (51.2%), diabetes mellitus (14.8%), and hypertension (13%). The median score on the CCI, which does not include obesity, asthma, or hypertension, was zero.

### Patients Who Received Invasive Mechanical Ventilation

There were 105 (10.3%) patients who received treatment with invasive mechanical ventilation (median age, 34.5; IQR, 30–37; 31% female). For these patients, the median length of stay was 4.8 days (IQR, 3–9.7) compared to 3.3 days (IQR, 2–6.8) for those who did not receive invasive mechanical ventilation. The most common comorbidities in this group were obesity (56.2%), diabetes mellitus (31.4%), and hypertension (25.7%). Median score on the CCI was 1. Obese patients were not more likely to receive invasive mechanical ventilation, with 11.28% (59 of 523) of these patients requiring ventilation compared to 8.82% (38 of 431) of non-obese patients (*P* < .210). Eight of the patients who received treatment with invasive mechanical ventilation did not have a recorded body mass index and were left out of this analysis.

**Table 1. Participant Demographics and Comorbidities**

Variables	Total n = 1013	Died n = 50	Alive n = 963
<b>Demographic Information</b>			
Age, median, IQR (range)	33 (28–36)	35 (30–38)	32 (28–36)
<b>Age, n (%)</b>			
18–24	119 (11.7)	4 (3.4)	115 (96.6)
25–31	329 (32.5)	12 (3.7)	317 (96.4)
32–39	565 (55.8)	34 (6.0)	531 (94.0)
Female, n (%)	527 (52)	15 (2.9)	512 (97.2)
Male, n (%)	486 (48)	35 (7.2)	451 (92.8)
<b>Race, n (%)</b>			
African American	215 (21.2)	14 (6.5)	201 (93.5)
Asian	82 (8.1)	2 (2.4)	80 (97.6)
White	263 (26)	9 (3.4)	254 (96.6)
Other/Multiracial	416 (41.1)	24 (5.8)	392 (94.2)
Unknown/Declined	37 (3.7)	1 (2.7)	36 (97.3)
<b>Ethnicity, n (%)</b>			
Hispanic	334 (33)	19 (5.7)	315 (94.3)
Non-Hispanic	623 (61.5)	28 (4.5)	595 (95.5)
Unknown/Declined	56 (5.5)	3 (5.4)	53 (94.6)
<b>Insurance, n (%)</b>			
Commercial	405 (40)	16 (4.0)	389 (96.1)
Medicaid	516 (50.9)	27 (5.2)	489 (94.8)
Medicare	41 (4)	4 (9.8)	37 (90.2)
Self-pay	33 (3.6)	3 (9.1)	30 (90.9)
Other	18 (1.8)	0 (0.0)	18 (100.0)
<b>Comorbidities</b>			
Cancer, n (%)	5 (.5)	3 (60.0)	2 (40.0)
<b>Cardiovascular Disease, n (%)</b>			
Hypertension	132 (13)	13 (9.9)	119 (90.2)
Coronary artery disease	2 (.2)	0 (0.0)	2 (100.0)
Congestive heart failure	9 (.9)	4 (44.4)	5 (55.6)
Chronic liver disease	21 (2.1)	1 (4.8)	20 (95.2)
<b>Chronic Respiratory Disease, n (%)</b>			
Asthma	122 (12)	6 (4.9)	116 (95.1)
Chronic Obstructive Pulmonary Disease	3 (.3)	1 (33.3)	2 (66.7)
Diabetes mellitus	150 (15)	8 (12.0)	132 (88.0)
End-stage kidney disease, n (%)	23 (2.3)	2 (8.7)	21 (91.3)
BMI, median, IQR, n = 954	30.9 (26.6–36.7)	33.7 (28.3–40.6)	30.7 (26.6–36.6)
<b>Obesity, n (%), n = 954</b>			
Normal (BMI <25.0)	163 (16.1)	5 (3.1)	158 (96.9)
Overweight (BMI 25.0–29.9)	272 (26.9)	9 (3.3)	263 (96.7)
Obese (BMI 30.0–39.9)	368 (36.3)	20 (5.4)	348 (94.6)
Severe obese (BMI ≥40.0)	151 (15)	12 (8.0)	139 (92.1)
Charlson comorbidity index, median (IQR)	0 (1.0)	1 (2.0)	0 (1.0)
<b>Smoking Status, n (%)</b>			
Never	881 (87)	34 (3.86)	847 (96.1)
Former	47 (4.6)	3 (6.4)	44 (93.6)
Active	39 (3.8)	2 (5.1)	37 (94.9)
Unknown	46 (4.5)	11 (23.9)	35 (76.1)

Abbreviations: BMI, body mass index; IQR, interquartile range.

**College-Aged Patients (18–24 Years Old)**

There were 119 patients in our study within this age group (median age, 22 years [IQR, 21–23]; 69% female). Median length of stay for these patients was 3 days (IQR, 1.9–4.9). Only 7 required invasive mechanical ventilation and, of those, 4 died. Two of the

7 who required invasive mechanical ventilation had no prior medical history except for obesity, whereas the remaining 5 patients all had comorbidities, including Down's syndrome, congestive heart failure, end-stage kidney disease, and obstructive sleep apnea. The median BMI was 39.8 (IQR, 24.7–34.8) for all

patients in this age group, 33.0 (IQR, 23.4–49.0) for those requiring invasive mechanical ventilation, and 24.0 (IQR, 21.1–40.5) for those who died.

### Predictors of Survival

Obesity and CCI were both negatively associated with in-hospital 30-day survival (Table 2). The strongest predictor of mortality in this age group was obesity (Figures 1 and 2). Patients who were obese, compared to those who were not, were 2.7 times more likely to expire within 30 days. Mortality risk increased by 20% for each additional point on the CCI. Among covariates examined sex, insurance type, asthma, hypertension, and smoking status were eliminated from the final model as these were not associated with increased mortality risk. The hazard ratio for other race varied over time and was significant only in patients with a hospital stay over 20 days.

## DISCUSSION

This is the first study to report on predictors of survival in young adults, and its findings are significantly strengthened by our large number of participants. As expected, the overwhelming majority (95%) of hospitalized patients in this age group were alive at the study end point. Obesity, diabetes mellitus, and hypertension were the most common comorbidities in hospitalized patients; these findings echo reports for hospitalized patients of all age groups and support the findings from study in young adults [17, 23]. Body mass index and comorbidity burden (as measured by the CCI) were identified as predictors of in-hospital survival in young adults with COVID-19.

Obesity emerged as the most significant predictor of mortality in this age group. Obesity does not show a decreased prevalence by age in America, where approximately 40% of adults in all age groups are obese [28]. With the exception of 1 patient, with cachexia secondary to metastatic choriocarcinoma, all of the college-aged (18–24) patients in our cohort who died or required invasive mechanical ventilation were obese or morbidly obese. Our findings are supported by a recent study detailing

the differential effect of obesity on risk of mortality based on age [29]. That study found that obesity was independently associated with mortality in those younger than 50 with an adjusted odds ratio of 5.1. For those with age above 50, however, the strength of association was weaker, with an adjusted odds ratio of 1.6.

We analyzed data only for patients admitted with COVID-19 and were unable to assess for predictors of infection or severe disease in young adults outside of the hospital. However, of the 954 people in our study with a recorded BMI, 519 (54.4%) were obese. This is higher than the national average and average in the NYC metropolitan area and suggests either a higher susceptibility to infections or a higher likelihood of severe disease requiring hospitalization. Further study will assess obesity as a predictor of severe disease and out-of-hospital survival in those with COVID-19.

The reason that obesity is associated with mortality in young adults is likely multifactorial. Obesity is associated with several additional chronic medical problems, such as diabetes and chronic kidney disease. However, we adjusted for these and other medical conditions in our analysis using the CCI. Obese persons are known to have reduced lung volumes and hypoventilation, which makes them at greater risk for complications from respiratory illnesses [30]. In addition, there is emerging evidence that patients with COVID-19 suffer from a hypercoagulable state that may act synergistically with the hypercoagulable state seen in obesity, which can lead to an increased risk of potentially fatal conditions such as pulmonary embolism, stroke, and arterial thrombosis [31].

### Limitations

Several limitations should be noted. First, this cohort comprised only patients within the New York metropolitan area. Data were extracted from the EHR database and do not include the level of granularity that would be possible with a manual chart review. Of note, smoking status was limited given the inability to capture e-cigarette and vaping usage among this younger cohort. Evidence-based treatment regimens were developing and changing rapidly, and thus data collection of these regimens was not possible. Despite these limitations, the results are based on a large and diverse number of patients and thus significantly contribute to the existing literature.

## CONCLUSIONS

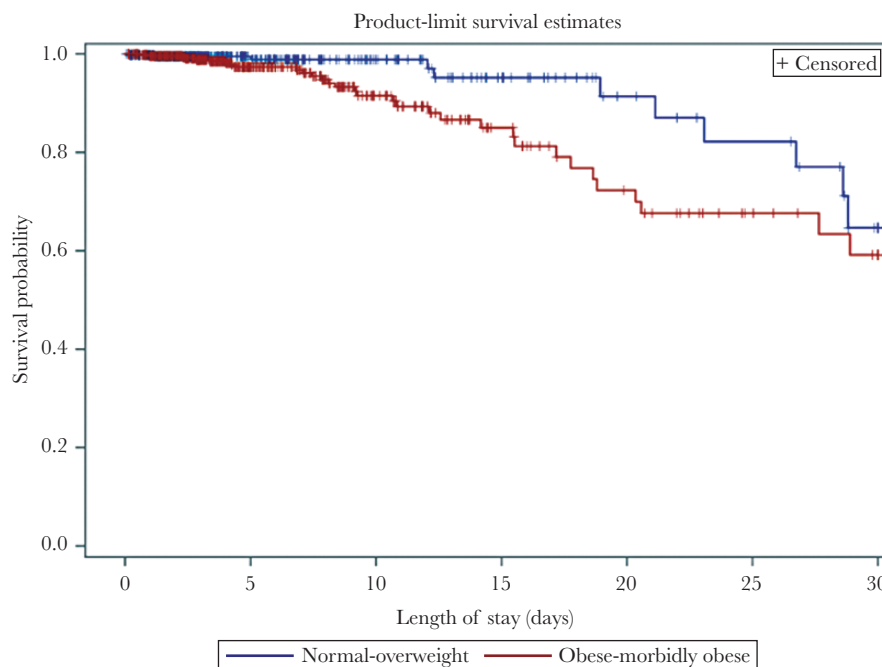
Obesity may represent the most significant barrier to survival in young adults hospitalized with COVID-19. Given these findings and our understanding of obesity as an almost entirely preventable disease, public health recommendations to improve population-level health should include food policy changes in addition to existing diet and lifestyle recommendations. In this

**Table 2. In-Hospital 30-Day Mortality Risk Assessment Using an Extended Cox Model**

Factor	aHR (95% CI) <sup>a</sup>	PValue
Age	1.05 (0.98–1.13)	.148
Charlson comorbidity index	1.20 (1.07–1.35)	.002
Obesity	2.71 (1.28–5.73)	.009
Asian, compared with white	0.36 (0.043–2.98)	.342
Black, compared with white	2.0 (0.81–4.90)	.136
Other/multiracial, compared with white	1.05 (0.32–3.48)	.934
Hispanic, compared with non-Hispanic	1.14 (0.42–3.10)	.801

Abbreviations: aHR, adjusted hazard ratio; CI, confidence interval.

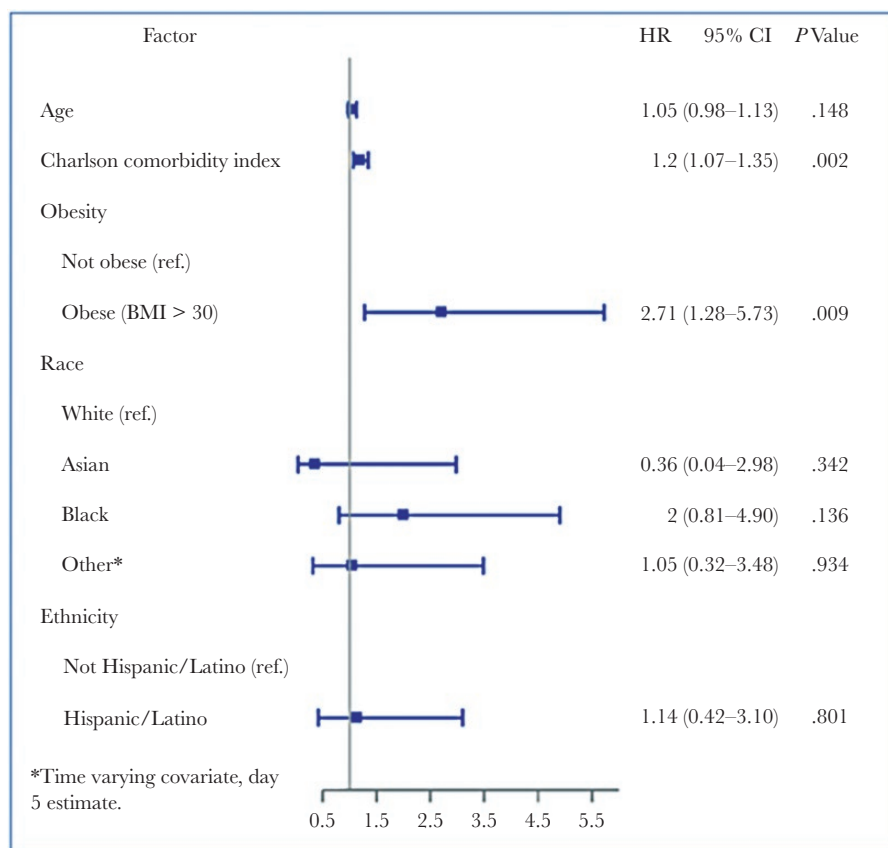
<sup>a</sup>All variables were used in multivariate analysis.



**Figure 1.** Unadjusted Kaplan-Meier curve for survival by obesity status.

study, the impact of obesity on in-hospital survival in young adults was similar in magnitude to the previously reported impact on survival of age over 65 in patients of all ages [10].

We acknowledge and honor all of our Northwell team members who consistently put themselves in harm's way during the coronavirus disease 2019 (COVID-19) pandemic. This article is dedicated to them, to honor their vital contribution to knowledge about COVID-19 and their sacrifices on



**Figure 2.** Forest plot: in-hospital 30-day mortality. BMI, body mass index; HR, hazard ratio.

behalf of patients. We also acknowledge the contributions of the Northwell COVID-19 Consortium: Dr. Bani M. Azari (Donald and Barbara Zucker School of Medicine at Hofstra/Northwell, Northwell Health, Hempstead, NY, USA); Dr. Douglas Barnaby (Institute of Health Innovations and Outcomes Research, Feinstein Institutes for Medical Research, Northwell Health, Manhasset, NY, USA); Donald and Barbara Zucker School of Medicine at Hofstra/Northwell, Northwell Health, Hempstead, NY, USA); Dr. James M. Crawford (Institute of Health Innovations and Outcomes Research, Feinstein Institutes for Medical Research, Northwell Health, Manhasset, NY, USA); Donald and Barbara Zucker School of Medicine at Hofstra/Northwell, Northwell Health, Hempstead, NY, USA; Northwell Health Laboratories, Northwell Health, Lake Success, NY, USA); Dr. Stuart L. Cohen (Institute of Health Innovations and Outcomes Research, Feinstein Institutes for Medical Research, Northwell Health, Manhasset, NY, USA); Donald and Barbara Zucker School of Medicine at Hofstra/Northwell, Northwell Health, Hempstead, NY, USA); Jennifer Cookingham (Institute of Health Innovations and Outcomes Research, Feinstein Institutes for Medical Research, Northwell Health, Manhasset, NY, USA); Dr. Karina W. Davidson (Institute of Health Innovations and Outcomes Research, Feinstein Institutes for Medical Research, Northwell Health, Manhasset, NY, USA); Donald and Barbara Zucker School of Medicine at Hofstra/Northwell, Northwell Health, Hempstead, NY, USA); Nicole Donoghue (Institute of Health Innovations and Outcomes Research, Feinstein Institutes for Medical Research, Northwell Health, Manhasset, NY, USA); Ciarán Friel (Institute of Health Innovations and Outcomes Research, Feinstein Institutes for Medical Research, Northwell Health, Manhasset, NY, USA); Dr. David A. Hirschwerk (Donald and Barbara Zucker School of Medicine at Hofstra/Northwell, Northwell Health, Hempstead, NY, USA); Danielle Llanos (Donald and Barbara Zucker School of Medicine at Hofstra/Northwell, Northwell Health, Hempstead, NY, USA); Dr. Elizabeth Lynch (Donald and Barbara Zucker School of Medicine at Hofstra/Northwell, Northwell Health, Hempstead, NY, USA); Dr. Lyndonna M. Marrast (Institute of Health Innovations and Outcomes Research, Feinstein Institutes for Medical Research, Northwell Health, Manhasset, NY, USA); Donald and Barbara Zucker School of Medicine at Hofstra/Northwell, Northwell Health, Hempstead, NY, USA); Dr. Ernesto P. Molmenti (Donald and Barbara Zucker School of Medicine at Hofstra/Northwell, Northwell Health, Hempstead, NY, USA); Rachel Monane (Institute of Health Innovations and Outcomes Research, Feinstein Institutes for Medical Research, Northwell Health, Manhasset, NY, USA); Vicente Nehgme (Donald and Barbara Zucker School of Medicine at Hofstra/Northwell, Northwell Health, Hempstead, NY, USA); Tommy H. Nguyen (Donald and Barbara Zucker School of Medicine at Hofstra/Northwell, Northwell Health, Hempstead, NY, USA).

## Acknowledgments

**Author contributions.** S. R., J. G., Z. K., S. L., H. R., J. S. H., T. M., and M. A. D. contributed to concept and design. H. R. and J. S. H. contributed to acquisition, analysis, or interpretation of data. S. R., S. L., Z. K., and M. A. D. contributed to drafting the manuscript. S. R., J. G., Z. K., S. L., H. R., J. S. H., T. M., and M. A. D. contributed to critical revision of the manuscript for important intellectual content. H. R. contributed to statistical analysis. S. R. and M. A. D. obtained funding. S. L. contributed to administrative, technical, or material support.

**Disclaimer.** None of the funding sources had any role in the design and conduct of the study; collection, management, analysis, and interpretation of the data; preparation, review, or approval of the manuscript; or decision to submit the manuscript for publication. The views expressed in this paper are those of the authors and do not represent the views of the National Institutes of Health, the United States Department of Health and Human Services, or any other government entity. The corresponding author confirms that he had full access to all the data in the study and final responsibility for the decision to submit for publication.

**Financial support.** This work was funded by grants from the National Institute on Aging at the National Institutes of Health (R24AG064191), the National Library of Medicine at the National Institutes of Health (R01LM012836), the National Heart Lung and Blood Institute at the

National Institutes of Health (K23HL145114; to S. R.), the Centers for Disease Control and Prevention (U01OH011690; to M. A. D.), the National Cancer Institute at the National Institutes of Health (R01CA224918; to M. A. D.), and a Research Scholar Award by the American Cancer Society (RSG-15-021-01-CPPB; to M. A. D.).

**Potential conflicts of interest.** All authors: No reported conflicts of interest. All authors have submitted the ICMJE Form for Disclosure of Potential Conflicts of Interest. Conflicts that the editors consider relevant to the content of the manuscript have been disclosed.

## References

- World Health Organization. Pneumonia of unknown cause – China. Available at: [www.who.int/csr/don/05-january-2020-pneumonia-of-unknown-cause-china/en/](http://www.who.int/csr/don/05-january-2020-pneumonia-of-unknown-cause-china/en/). Accessed 12 June 2020.
- World Health Organization. Naming the coronavirus disease (COVID-19) and the virus that causes it. Available at: [https://www.who.int/emergencies/diseases/novel-coronavirus-2019/technical-guidance/naming-the-coronavirus-disease-\(covid-2019\)-and-the-virus-that-causes-it](https://www.who.int/emergencies/diseases/novel-coronavirus-2019/technical-guidance/naming-the-coronavirus-disease-(covid-2019)-and-the-virus-that-causes-it). Accessed .
- Livingston E, Bucher KJ. Coronavirus disease 2019 (COVID-19) in Italy. *JAMA* **2020**; 323:1335.
- Wu Z, McGoogan JM. Characteristics of and important lessons from the coronavirus disease 2019 (COVID-19) outbreak in China: summary of a report of 72314 cases from the Chinese center for disease control and prevention. *JAMA* **2020**; 323:1239–42.
- Centers for Disease Control and Prevention. Severe outcomes among patients with coronavirus disease 2019 (COVID-19) – United States, February 12 – March 16, 2020. *MMWR Morb Mortal Wkly Rep* **2020**; doi:10.15585/mmwr.mm6912e2.
- Centers for Disease Control and Prevention. Cases in the US. COVID Data Tracker. Available at: <https://www.cdc.gov/coronavirus/2019-ncov/cases-updates/cases-in-us.html>. Accessed 12 June 2020.
- Health N. COVID-19: Data. Available at: <https://www1.nyc.gov/site/doh/covid/covid-19-data.page>. Accessed 12 June 2020.
- Chen T, Dai Z, Mo P, et al. Clinical characteristics and outcomes of older patients with coronavirus disease 2019 (COVID-19) in Wuhan, China (2019): a single-centered, retrospective study. *J Gerontol A Biol Sci Med Sci* **2020**; 75:1788–95.
- Ruan Q, Yang K, Wang W, et al. Clinical predictors of mortality due to COVID-19 based on an analysis of data of 150 patients from Wuhan, China. *Intensive Care Med* **2020**; 46:846–48.
- Du RH, Liang LR, Yang CQ, et al. Predictors of mortality for patients with COVID-19 pneumonia caused by SARS-CoV-2: a prospective cohort study. *Eur Respir J* **2020**; 55.
- Lippi G, Wong J, Henry BM. Hypertension and its severity or mortality in coronavirus disease 2019 (COVID-19): a pooled analysis. *Pol Arch Intern Med* **2020**; 130:304–9.
- Yan Y, Yang Y, Wang F, et al. Clinical characteristics and outcomes of patients with severe covid-19 with diabetes. *BMJ Open Diabetes Res Care* **2020**; 8:e001343.
- Wang K, Zuo P, Liu Y, et al. Clinical and laboratory predictors of in-hospital mortality in 305 patients with COVID-19: a cohort study in Wuhan, China. *Clin Infect Dis* **2020**; 71:2079–88.
- Petrilli CM, Jones SA, Yang J, et al. Factors associated with hospital admission and critical illness among 5279 people with coronavirus disease 2019 in New York City: prospective cohort study. *BMJ* **2020**; 369:m1966.
- Lighter J, Phillips M, Hochman S, et al. Obesity in patients younger than 60 years is a risk factor for COVID-19 hospital admission. *Clin Infect Dis* **2020**; 71:896–7.
- Simonnet A, Chetboun M, Poissy J, et al; LICORN and the Lille COVID-19 and Obesity study group. High prevalence of obesity in severe acute respiratory syndrome coronavirus-2 (SARS-CoV-2) requiring invasive mechanical ventilation. *Obesity (Silver Spring)* **2020**; 28:1195–9.
- Cunningham JVM, et al. Clinical outcomes in young us adults hospitalized with COVID-19. *JAMA Intern Med* **2020**. doi: 10.1001/jamainternmed.2020.5313.
- Xu S, Li Y. Beware of the second wave of COVID-19. *Lancet* **2020**; 395:1321–2.
- Mamelund SE. 1918 pandemic morbidity: the first wave hits the poor, the second wave hits the rich. *Influenza Other Respir Viruses* **2018**; 12:307–13.
- Gagnon A, Miller MS, Hallman SA, et al. Age-specific mortality during the 1918 influenza pandemic: unravelling the mystery of high young adult mortality. *PLoS One* **2013**; 8:e69586.
- Davila J, Chowell G, Borja-Aburto VH, et al. Substantial morbidity and mortality associated with pandemic A/H1N1 influenza in Mexico, Winter 2013–2014: gradual age shift and severity. *PLoS Curr* **2014**; 6. doi:10.1371/currents.outbreaks.a855a92f19db1d90ca955f5e908d6631
- Snyder, TD, de Brey C, Dillow SA. Total fall enrollment in degree-granting postsecondary institutions, by level and control of institution and race/ethnicity of student: selected years, 1976 through 2015. *Table* **2018**; 306: 2017–094.

23. Richardson S, Hirsch JS, Narasimhan M, et al. Presenting characteristics, comorbidities, and outcomes among 5700 patients hospitalized with COVID-19 in the New York city area. *JAMA* **2020**; 323: 2052–9.
24. Hirsch JS, Ng JH, Ross DW, et al. Acute kidney injury in patients hospitalized with COVID-19. *Kidney Int* **2020**; 98:209–18.
25. Nair V, Jandovitz N, Hirsch JS, et al. COVID-19 in kidney transplant recipients. *Am J Transplant* **2020**; 20:1819–25.
26. Charlson ME, Pompei P, Ales KL, MacKenzie CR. A new method of classifying prognostic comorbidity in longitudinal studies: development and validation. *J Chronic Dis* **1987**; 40:373–83.
27. Kleinbaum DG, Klein M. *Survival Analysis*. New York: Springer Verlag. **2010**.
28. Centers for Disease Control and Prevention. Prevalence of Obesity and Severe Obesity Among Adults: United States, 2017–2018. Available at: <https://www.cdc.gov/nchs/products/databriefs/db360.htm#:~:text=The%20prevalence%20was%2040.0%25%20among,adults%20aged%2060%20and%20over>. Accessed 12 June 2020.
29. Klang EKG, Soffer S, Freeman R, et al. Morbid obesity as an independent risk factor for COVID-19 mortality in hospitalized patients younger than 50. *Obesity* **2020**. doi: [10.1002/oby.22913](https://doi.org/10.1002/oby.22913).
30. Olson AL, Zwillich C. The obesity hypoventilation syndrome. *Am J Med* **2005**; 118:948–56.
31. Bilaloglu S, Aphinyanaphongs Y, Jones S, et al. Thrombosis in hospitalized patients with COVID-19 in a New York City health system. *JAMA* **2020**; 324:799–801.