

# FOREST unbiased Galactic plane imaging survey with the Nobeyama 45 m telescope (FUGIN). VIII. Possible evidence of cloud–cloud collisions triggering high-mass star formation in the giant molecular cloud M 16 (Eagle Nebula)

Atsushi NISHIMURA <sup>1,\*</sup> Shinji FUJITA <sup>1</sup> Mikito KOHNO <sup>2</sup>  
Daichi TSUTSUMI,<sup>3</sup> Tetsuhiro MINAMIDANI <sup>4,5</sup> Kazufumi TORII <sup>4,5</sup>  
Tomofumi UMEMOTO,<sup>4,5</sup> Mitsuhiro MATSUO,<sup>4</sup> Yuya TSUDA,<sup>7</sup> Mika KURIKI,<sup>8</sup>  
Nario KUNO,<sup>8,9</sup> Hidetoshi SANO <sup>3,10</sup> Hiroaki YAMAMOTO,<sup>3</sup>  
Kengo TACHIARA <sup>3</sup> and Yasuo FUKUI<sup>3,10</sup>

<sup>1</sup>Department of Physical Science, Graduate School of Science, Osaka Prefecture University, 1-1 Gakuen-cho, Naka-ku, Sakai, Osaka 599-8531, Japan

<sup>2</sup>Astronomy Section, Nagoya City Science Museum, 2-17-1 Sakae, Naka-ku, Nagoya, Aichi 460-0008, Japan

<sup>3</sup>Department of Physics, Nagoya University, Furo-cho, Chikusa-ku, Nagoya, Aichi 464-8602, Japan

<sup>4</sup>Nobeyama Radio Observatory, National Astronomical Observatory of Japan (NAOJ), National Institutes of Natural Sciences (NINS), 462-2 Nobeyama, Minamimaki, Minamisaku, Nagano 384-1305, Japan

<sup>5</sup>Department of Astronomical Science, SOKENDAI (The Graduate University for Advanced Studies), 2-21-1 Osawa, Mitaka, Tokyo 181-8588, Japan

<sup>6</sup>Institute of Space and Astronautical Science, Japan Aerospace Exploration Agency, 3-1-1 Yoshinodai, Chuo-ku, Sagami-hara, Kanagawa 252-5210, Japan

<sup>7</sup>Graduate School of Science and Engineering, Meisei University, 2-1-1 Hodokubo, Hino, Tokyo 191-0042, Japan

<sup>8</sup>Department of Physics, University of Tsukuba, 1-1-1 Ten-nodai, Tsukuba, Ibaraki 305-8577, Japan

<sup>9</sup>Center for Integrated Research in Fundamental Science and Technology (CiRfSE), University of Tsukuba, Tsukuba, Ibaraki 305-8571, Japan

<sup>10</sup>Institute for Advanced Research, Nagoya University, Chikusa-ku, Nagoya, Aichi 464-8601, Japan

\*E-mail: [nishimura@p.s.osakafu-u.ac.jp](mailto:nishimura@p.s.osakafu-u.ac.jp)

Received 2020 April 10; Accepted 2020 July 27

## Abstract

M 16, the Eagle Nebula, is an outstanding H II region which exhibits extensive high-mass star formation and hosts remarkable “pillars.” We herein obtained new  $^{12}\text{CO } J=1-0$  data for the region observed with NANTEN2, which were combined with the  $^{12}\text{CO } J=1-0$  data obtained using the FOREST unbiased galactic plane imaging with Nobeyama 45 m telescope (FUGIN) survey. These observations revealed that a giant molecular cloud (GMC) of  $\sim 1.3 \times 10^5 M_{\odot}$  is associated with M 16, which extends for 30 pc perpendicularly to the galactic plane, at a distance of 1.8 kpc. This GMC can be divided into the northern

(N) cloud, the eastern (E) filament, the southeastern (SE) cloud, the southeastern (SE) filament, and the southern (S) cloud. We also found two velocity components (blueshifted and redshifted components) in the N cloud. The blueshifted component shows a ring-like structure, and the redshifted one coincides with the intensity depression of the ring-like structure. The position–velocity diagram of the components showed a V-shaped velocity feature. The spatial and velocity structures of the cloud indicated that two different velocity components collided with each other at a relative velocity of  $11.6 \text{ km s}^{-1}$ . The timescale of the collision was estimated to be  $\sim 4 \times 10^5 \text{ yr}$ . The collision event reasonably explains the formation of the O9V star ALS 15348, as well as the shape of the Spitzer bubble N19. A similar velocity structure was found in the SE cloud, which is associated with the O7.5V star HD 168504. In addition, the complementary distributions of the two velocity components found in the entire GMC suggested that the collision event occurred globally. On the basis of the above results, we herein propose a hypothesis that the collision between the two components occurred sequentially over the last several  $10^6 \text{ yr}$  and triggered the formation of O-type stars in the NGC 6611 cluster in M 16.

**Key words:** ISM: clouds — ISM: individual objects (M 16) — stars: formation — radio lines: ISM

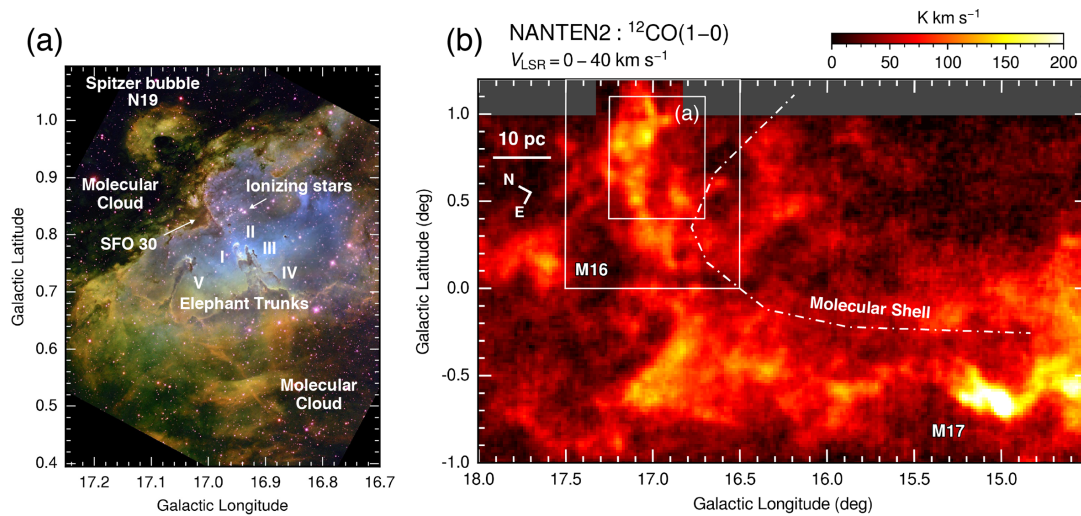
## 1 Introduction

High-mass stars, such as O- and early B-type stars, contribute considerable amounts of energy to the galactic disk, and they dominate dynamics of the interstellar medium and influence the galactic evolution. It is, therefore, crucial to understand the mechanisms of high-mass star formation in order to obtain a comprehensive understanding of galactic evolution. Considerable amounts of effort have been devoted toward this issue (e.g., see Zinnecker & Yorke 2007 for a review).

O/early B stars ionize H II regions, which are often associated with natal molecular gas. H II regions are, therefore, a primary target for studying the mechanisms and initial conditions of high-mass star formation on the basis of observations of stars and molecular gas. One difficulty in tracing star formation in H II regions is that ionization significantly affects natal gas, which is dispersed quickly after star formation. In order to minimize the influence of ionization, very young star formation needs investigating via molecular studies, and such samples need to be a sufficiently large to yield statistically sound conclusions. Recent studies of giant molecular clouds (GMCs) near the Sun including Orion A (Nishimura et al. 2015; Fukui et al. 2018a; Tanabe et al. 2019; Ishii et al. 2019; Nakamura et al. 2019), Orion B (Pety et al. 2017; Enokiya et al. 2021a; Fujita et al. 2021b), Cygnus-X (Yamagishi et al. 2018; Takekoshi et al. 2019; Dobashi et al. 2019), M 17 (Yamagishi et al. 2016; Nishimura et al. 2018; Shimoikura et al. 2019), M 20 (Torii et al. 2011, 2017), Vela (Fukui et al. 2016; Sano et al. 2018; Enokiya et al. 2018), and NGC 6334/NGC 6357 (Fukui et al. 2018b) are part of such efforts. These H II regions show very young star formation with an age of  $\sim 10^5 \text{ yr}$ , providing us with hints regarding the initial cloud conditions and distributions prior to O star formation.

The distance scale affected by ionization is given as  $v_i \times \text{age}$ , where  $v_i \sim 5 \text{ km s}^{-1}$  is the typical velocity of an ionization front (e.g., Spitzer 1968). An age of  $10^5 \text{ yr}$  yields  $\sim 0.5 \text{ pc}$  as the distance, which is smaller than a typical star-forming cloud (e.g., Orion and Vela) having a size of a few to  $\sim 10 \text{ pc}$ . On the other hand, molecular gas within a  $10 \text{ pc}$  radius becomes significantly ionized if there are 10 or more O stars whose ages are  $\sim 2 \text{ Myr}$ , as in Westerlund 2 (Furukawa et al. 2009; Ohama et al. 2010), NGC 3603 (Fukui et al. 2014), and [DBS2003]179 (Kuwahara et al. 2021). Natal gas directly related to star formation has already been lost in those regions; however, it is still possible that the rest of the gas outside  $10 \text{ pc}$ , which has yet to be ionized, may contain a hint of the initial conditions of the parental cloud and any early interactions with other clouds. It is noteworthy that the recent large-scale mapping of GMCs has shown possible evidence of cloud–cloud collisions in molecular gas outside ionized regions, which suggests that collisions may trigger O/early B star formation in all of the H II regions listed above, and perhaps many others (Fukui et al. 2015, 2017, 2018c, 2018d; Ohama et al. 2018a, 2018b; Hayashi et al. 2018; Kohno et al. 2018, 2021; Torii et al. 2018, 2021; Fujita et al. 2019, 2021a; Enokiya et al. 2021b).

M 16, the Eagle Nebula, is one of the most well-known high-mass star formation sites (figure 1a; for a review, see Oliveira 2008). At a distance of  $1.8 \text{ kpc}$  (Bonatto et al. 2006; Dufton et al. 2006; Guarcello et al. 2007), it is located on the Sagittarius Arm, which consists of an open cluster (NGC 6611), an H II region known as Sh2-49 (Sharpless 1959), Gum 83 (Gum 1955), RCW 165 (Rodgers et al. 1960) or W 37 (Westerhout 1958), some bright rimmed clouds (e.g., Sugitani et al. 1991), and



**Fig. 1.** (a) Optical composite image of the Eagle Nebula taken with the 0.9-m telescope at the Kitt Peak Observatory with the NOAO Mosaic CCD camera (Credit: T. A. Rector, B. A. Wolpa, and NOAO). Green, blue, and red show  $\text{H}\alpha$ ,  $[\text{O III}]$ , and  $[\text{S II}]$ . The pillars in the elephant trunks (I–V), the Spitzer bubble N19 (Churchwell et al. 2006), the bright rimmed cloud SFO30 (Sugitani et al. 1991), and other objects are labeled in the figure. (b) Integrated intensity map of  $^{12}\text{CO } J=1-0$  distribution toward the Sagittarius–Carina Arm including M16 and M17 GMCs taken with the NANTEN2 telescope. The intensity is integrated over 0 to  $40 \text{ km s}^{-1}$ . The area shown in figure 1a and the definition of the boundary of the M16 GMC used the study are shown by white boxes with labels. The limit of the molecular shell (Guarcello et al. 2010) is shown by the white dot-dashed curve.

molecular clouds (Dame et al. 2001). NGC 6611 contains 52 known O/early-B stars (Evans et al. 2005), with the most massive one being the O4 star HD 168076. The age and total mass of NGC 6611’s stellar population have been estimated to be  $1.3 \pm 0.3 \text{ Myr}$  (Bonatto et al. 2006) and  $\sim 2.5 \times 10^4 M_{\odot}$  (Wolff et al. 2007), respectively. The molecular gas within  $\sim 5 \text{ pc}$  from the cluster is heavily ionized, but a remnant of the parental gas still exists in spectacular pillars named “elephant trunks” (e.g., Hester et al. 1996; Levay et al. 2015). Moreover, molecular clouds are present outside the ionization front created by the cluster (Hill et al. 2012), with active ongoing low-mass star formation in these clouds (Povich et al. 2013). In addition, the association of two O-type stars, ALS 15348 and HD 168504, with the surrounding clouds suggests that high-mass star formation is also ongoing in the clouds. The molecular clouds in M16 are, therefore, suitable to be used for investigating the initial conditions of cluster formation and the process of forming O-type low-mass stars.

We carried out new  $\text{CO } J=1-0$  observations with NANTEN2 toward M16 and combined them with existing high-resolution FUGIN data. The combined data revealed the whole cloud and its surroundings at angular resolutions suitable for studies of star formation and of cloud interactions with  $\text{H II}$  regions. We herein present the first results of these observations. This paper is organized as follows: section 2 provides descriptions of the CO observations; section 3 presents the CO results; section 4 presents a discussion of star formation in clouds; section 5 concludes the paper.

## 2 Data set

### 2.1 $^{12}\text{CO } J=1-0$ observations with the NANTEN2 telescope

The entire extent of the molecular gas toward the M16 GMC was observed with the NANTEN2 4 m submillimeter telescope (Mizuno & Fukui 2004) using  $^{12}\text{CO } J=1-0$  emission line at 115 GHz during the period from 2012 January to 2013 January. A superconductor–insulator–superconductor (SIS) mixer receiver was used for the front end, and a digital Fourier transform spectrometer with 16384 channels of 1 GHz bandwidth, corresponding to velocity coverage and resolution of  $2600 \text{ km s}^{-1}$  and  $0.16 \text{ km s}^{-1}$ , respectively, was used for the back end. The double-sideband (DSB) system noise temperature was typically measured to be 110 K toward the zenith including the atmosphere during the observation period. On-the-fly (OTF) mapping mode was used for observations, and each observation was carried out on a submap which has an area of  $1 \text{ deg}^2$ . The pointing accuracy was checked every three hours and achieved within an offset of  $25''$ . The absolute intensity was calibrated by observing IRAS 16293–2422. After initial data reductions, the final beam size (full width at half maximum, FWHM) was  $180''$ , and the typical noise level was 0.42 K on the  $T_{\text{mb}}$  scale.

### 2.2 FUGIN $^{12}\text{CO}$ , $^{13}\text{CO}$ , and $\text{C}^{18}\text{O } J=1-0$ data

In order to investigate the detailed structures in the GMC,  $^{12}\text{CO}$ ,  $^{13}\text{CO}$ , and  $\text{C}^{18}\text{O } J=1-0$  data sets obtained by the

FUGIN survey with the Nobeyama 45 m telescope were analyzed. The FUGIN project observed the galactic plane with a range of ( $l = 10^\circ\text{--}50^\circ$ ,  $b \leq \pm 1^\circ$ ) using  $^{12}\text{CO}$ ,  $^{13}\text{CO}$ , and  $\text{C}^{18}\text{O } J = 1\text{--}0$  lines. The FOur-beam REceiver System on the 45 m Telescope (FOREST; Minamidani et al. 2016) and the FX-type correlator SAM45 (Kuno et al. 2011; Kamazaki et al. 2012) were used to perform the observations. OTF observations (Sawada et al. 2008) were carried out for each submap, which were divided into squares of  $1 \times 1 \text{ deg}^2$ . The angular resolution of the data sets was  $\sim 20''$ , and the pointing accuracy was kept within  $3''$ . More detailed information on the observations and the data reduction was provided by Umemoto et al. (2017), and the data quality was discussed by Torii et al. (2019).

The scan strategy of the FUGIN observation was optimized for large-scale mapping. In order to achieve this goal, an arbitrary ON position was scanned by any of the four beams of FOREST, and the observed data from each beam were merged to create fully sampled large-scale maps. Therefore, because of the different noise temperature in each beam, undesirable scanning effects appeared in some of the merged maps, especially when the weather conditions were less than ideal. For the region containing M 16, the map of  $l = 17^\circ\text{--}18^\circ$  suffered from some scanning effects. In order to remove these features, the CO data sets were smoothed to a  $50''$  resolution for this study.

In the current study, the CO data of  $l = 16^\circ.5\text{--}17^\circ.5$  and  $b = 0^\circ\text{--}1^\circ$  were cut out and used. It is worth noting that although the distribution of the M 16 GMC about the galactic latitude ( $b = 0^\circ\text{--}1^\circ.2$ ) exceeds the survey area of the FUGIN ( $b \leq \pm 1^\circ$ ), the FUGIN data sets are still useful for this study as the majority of the molecular gas emission is distributed within the area mapped by FUGIN.

### 3 Results

#### 3.1 Large-scale molecular distribution with NANTEN2

Figure 1b shows the large-scale integrated intensity distribution of the  $^{12}\text{CO } J = 1\text{--}0$  emission in a  $2^\circ \times 3^\circ.5$  region containing the M 16 and M 17 GMCs obtained with the NANTEN2 telescope. Intensities were calculated by integrating the spectra between 0 and  $40 \text{ km s}^{-1}$ , which almost corresponds to the velocity range of the near side of the Sagittarius Arm. The maximum intensity of  $^{12}\text{CO } J = 1\text{--}0$  was found at the position of the M 17 GMC ( $l = 15^\circ.001$ ,  $b = -0^\circ.667$ ) with an intensity of  $382 \text{ K km s}^{-1}$ , and the second-maximum intensity was found at the position of the M 16 GMC ( $l = 17^\circ.035$ ,  $b = 0^\circ.867$ ) with an intensity of  $165 \text{ K km s}^{-1}$ . Both GMCs are located at the edge of a molecular super shell (Moriguchi et al. 2002; Guarcello

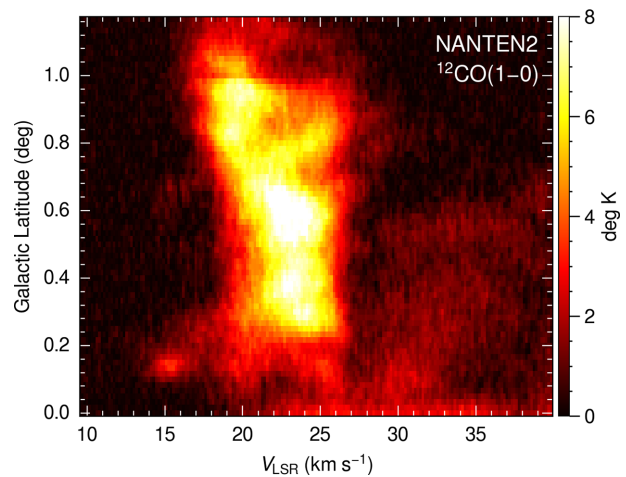


Fig. 2. Latitude-velocity ( $b$ - $v$ ) diagram of the M 16 GMC for the emission of  $^{12}\text{CO } J = 1\text{--}0$  taken with the NANTEN2 telescope. The intensity is integrated over  $l = 17^\circ.5$  to  $16^\circ.5$ .

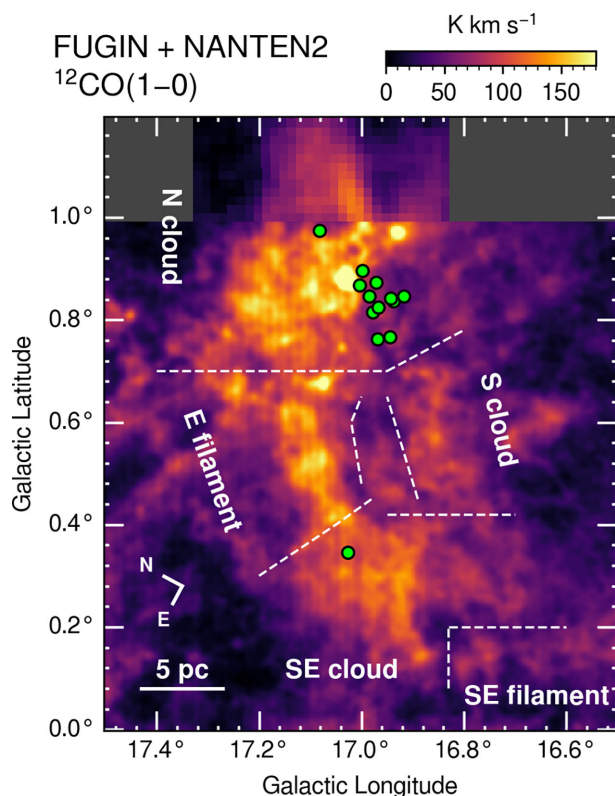
et al. 2010; Comerón & Torra 2018). The M 17 GMC is distributed almost parallel to the galactic plane, whereas the M 16 GMC is distributed almost perpendicularly to the plane. The size of the M 16 GMC is  $30 \text{ pc} \times 10 \text{ pc}$ . The intensity peak of  $^{12}\text{CO } J = 1\text{--}0$  and cluster NGC 6611 are located at the northwestern side of the GMC. The total mass of the GMC is estimated to be  $1.3 \times 10^5 M_\odot$  from  $^{12}\text{CO } J = 1\text{--}0$  transition using an  $X_{\text{CO}}$  factor of  $1.8 \times 10^{20} \text{ cm}^{-2} \text{ K}^{-1} \text{ km}^{-1} \text{ s}$  (Dame et al. 2001).

Figure 2 shows a latitude-velocity diagram of the M 16 GMC. Most of the emission was found in the velocity range  $15\text{--}28 \text{ km s}^{-1}$ . The GMC has a uniform velocity distribution in regions below  $b < 0^\circ.7$  with an intensity peak at  $24 \text{ km s}^{-1}$ , whereas it has a double-peaked velocity at  $20 \text{ km s}^{-1}$  and  $22\text{--}26 \text{ km s}^{-1}$  for regions above  $b > 0^\circ.7$ . A diffuse component was found for regions below  $b < 0^\circ.6$ , which has a velocity range of  $30\text{--}40 \text{ km s}^{-1}$ . This diffuse component seems to be unrelated to the GMC; therefore, we used the data with a velocity range of  $10\text{--}30 \text{ km s}^{-1}$  for the analyses of the GMC hereafter.

#### 3.2 Detailed molecular distribution with FUGIN

Figure 3 shows a velocity-integrated intensity map of  $^{12}\text{CO } J = 1\text{--}0$  obtained by FUGIN. Data were smoothed to a  $50''$  resolution to remove the scanning effects (see subsection 2.2). Intensities were calculated by integrating the spectra between 10 and  $32 \text{ km s}^{-1}$ . NANTEN data ( $180''$  resolution) were used to show the entire distribution of the GMC, which extend up to  $b = 1^\circ.2$  (and hence exceed the FUGIN coverage beyond  $b = 1^\circ$ ). The GMC can be divided into five subregions: a northern (N) cloud, an eastern (E) filament, a southeastern (SE) cloud, an SE filament, and a southern (S) cloud. The locations and definitions of boundaries of these





**Fig. 3.** Integrated intensity maps of  $^{12}\text{CO } J=1-0$  with a peak intensity of  $276.2 \text{ K km s}^{-1}$  toward the M 16 molecular clouds obtained by the FUGIN project and the NANTEN2 telescope. The spectra with a velocity range of  $10 \text{ km s}^{-1} < v_{\text{LSR}} < 32 \text{ km s}^{-1}$  are integrated. O-type stars (Evans et al. 2005) are shown by green circles.

subregions are shown in figure 3. The N cloud is the most massive cloud in the GMC, which is distributed around  $l > 0^\circ 7$  and is associated with active star formation regions, including the NGC 6611 cluster and the Spitzer bubble N19, the latter of which is associated with the O-type star ALS 15348. The cloud shows many short filamentary structures with CO emission, and the same structures are also seen in dust observations made with Herschel (Hill et al. 2012). The E filament connects the N cloud and the SE cloud and is elongated from  $(l, b) = (17^\circ 05', 0^\circ 4')$  to  $(l, b) = (17^\circ 1', 0^\circ 65')$ . The width and length of the filament are 2 pc and 6 pc, respectively. The SE cloud has a rounded shape and is located at  $b < 0^\circ 4$ , which is associated with a filament-shaped structure, the SE filament, located at  $l < 16^\circ 83'$  and  $b < 0^\circ 2$ . The O-type star HD 168504 is located at almost the center of the cloud. The velocity distributions of the SE cloud and the SE filament are different, that is,  $19\text{--}27 \text{ km s}^{-1}$  for the SE cloud and  $\sim 15 \text{ km s}^{-1}$  for the SE filament (see also figure 4). The S cloud is located at the southern side of the NGC 6611 cluster.

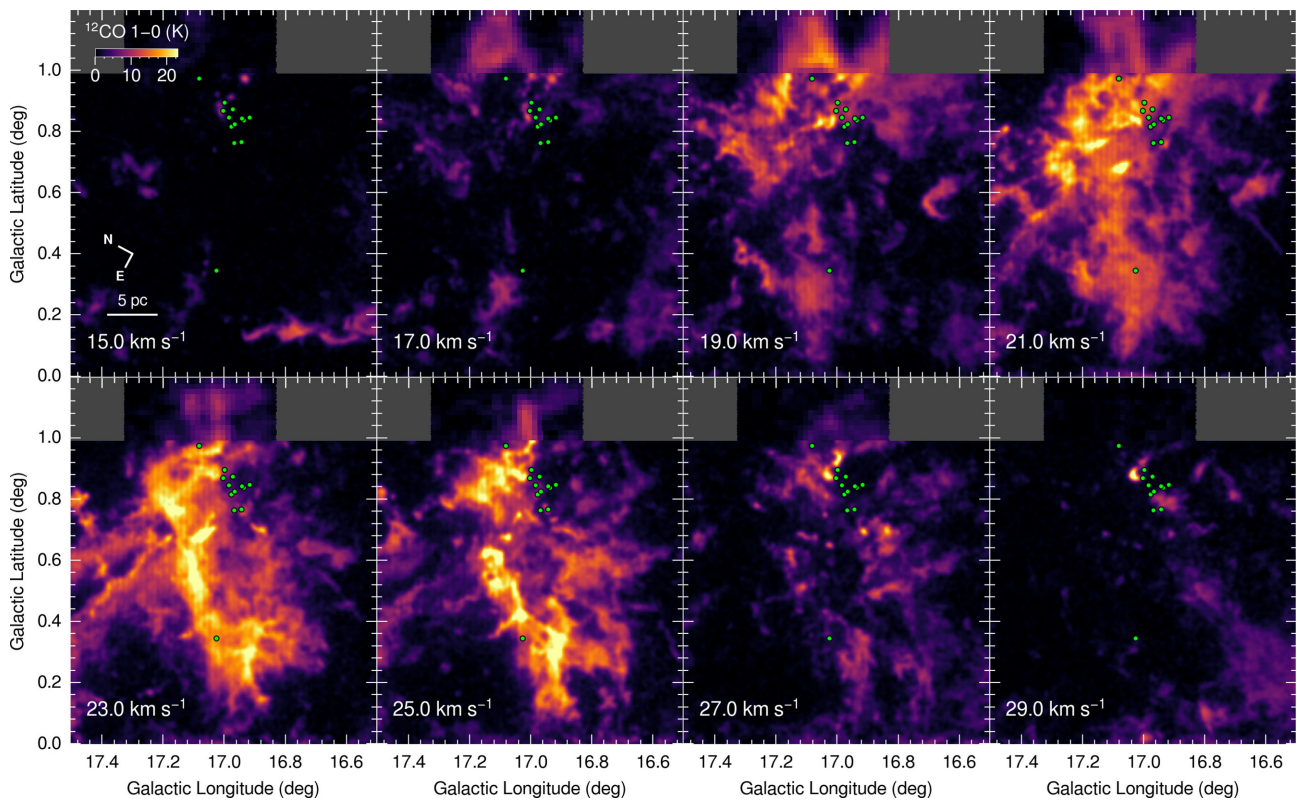
Velocity distributions are very complicated in the GMC, as seen in the velocity channel maps shown in figure 4. The GMC consists of many small filaments and cores, the

spatial distributions of which are drastically different in individual velocity ranges. The N cloud mainly consists of a blueshifted ring-like structure ( $v_{\text{LSR}} = 16\text{--}20 \text{ km s}^{-1}$ ) and a redshifted cloud ( $v_{\text{LSR}} = 24\text{--}28 \text{ km s}^{-1}$ ). For the E filament, intense well-defined filaments are found in the redshifted part ( $v_{\text{LSR}} = 23\text{--}26 \text{ km s}^{-1}$ ), whereas the blueshifted part ( $v_{\text{LSR}} = 18\text{--}22 \text{ km s}^{-1}$ ) shows a more diffuse distribution. The blueshifted component of the SE cloud ( $v_{\text{LSR}} = 16\text{--}22 \text{ km s}^{-1}$ ) consists of a diffuse component showing no internal structure, whereas the redshifted component of the cloud ( $v_{\text{LSR}} = 24\text{--}28 \text{ km s}^{-1}$ ) shows a filamentary structure. The velocity ranges of the blueshifted and redshifted components are slightly different for the N cloud, E filament, and SW cloud, whereas all regions can be divided into two velocity components using a central velocity of  $\sim 22 \text{ km s}^{-1}$ . The spatial distributions are also significantly different between the various components.

### 3.3 Detailed velocity distributions of the N cloud

Figure 5 shows the distribution of the blueshifted component ( $v_{\text{LSR}} < 20 \text{ km s}^{-1}$ ) toward the N cloud. This component shows a ring-like structure centered at  $(l, b) = (17^\circ 08', 0^\circ 93')$  with a diameter of  $\sim 5 \text{ pc}$  (figure 5a). The intensity depression of the molecular gas clearly coincides with the ring-like distribution of the  $8 \mu\text{m}$  Spitzer image (figure 5b) and also with the distribution of the H II region (figure 5c). The O9V star ALS 15348 ( $l = 17^\circ 083'$ ,  $b = 0^\circ 974'$ ), which is an ionizing star in the Spitzer bubble N19, is located at the center of the molecular ring with an offset of  $\sim 1 \text{ pc}$  in the NW direction. The width of the molecular ring is broader on the northern side (1–5 pc) than on the southern side ( $\sim 0.5 \text{ pc}$ ), the latter of which adjoins the NGC 6611 cluster, indicating that the southern side of the component became ionized and dissociated by feedback from the cluster. Figure 6 shows the distribution of the redshifted component ( $v_{\text{LSR}} > 24 \text{ km s}^{-1}$ ), which has no clear correspondence with the distribution of the N18 bubble. The intensity peaks near the contact point to the cluster ( $l = 17^\circ 038'$ ,  $b = 0^\circ 876'$ ) and decreases precipitously toward the cluster, indicating that the component is also affected by feedback from the cluster.

Figure 7 shows a longitude–velocity diagram of the Spitzer bubble N19. The NW side of the bubble ( $b = 0^\circ 98\text{--}1^\circ 05$ ; figure 7a) mainly consists of a blueshifted component, which seems to have no velocity gradient. A redshifted component is only found around  $l = 17^\circ 0$ , which is connected to the blueshifted component with the intermediate-velocity emission. In the central part of the bubble ( $b = 0^\circ 92\text{--}0^\circ 98$ ; figure 7b), most of the molecular gas is found in the intermediate-velocity range between the blueshifted and redshifted components. The velocity width



**Fig. 4.** Velocity channel maps of  $^{12}\text{CO } J=1-0$  FUGIN and NANTEN2 data for the velocity range  $14 \text{ km s}^{-1} < v_{\text{LSR}} < 30 \text{ km s}^{-1}$  made every  $2.0 \text{ km s}^{-1}$ . The center velocity is shown in the left-hand lower corner of each panel. O-type stars (Evans et al. 2005) are shown by green circles.

is broader within the bubble compared to the outer part of the bubble. The SE side of the bubble ( $b = 0^\circ 85\text{--}0^\circ 92$ ; figure 7c) shows a complicated velocity distribution, which can be divided into three parts: a blueshifted component, a redshifted component, and an intermediate bridging component. The velocity bridge features are found at  $l = 17^\circ 03$ ,  $17^\circ 09$ , and  $17^\circ 2$ . The velocity broadening found at the interface to the cluster around  $l = 17^\circ 00\text{--}17^\circ 04$  indicates that feedback from the cluster likely accelerated the blueshifted component to  $15 \text{ km s}^{-1}$  and the redshifted component to  $30 \text{ km s}^{-1}$  at the surface layer of the cloud.

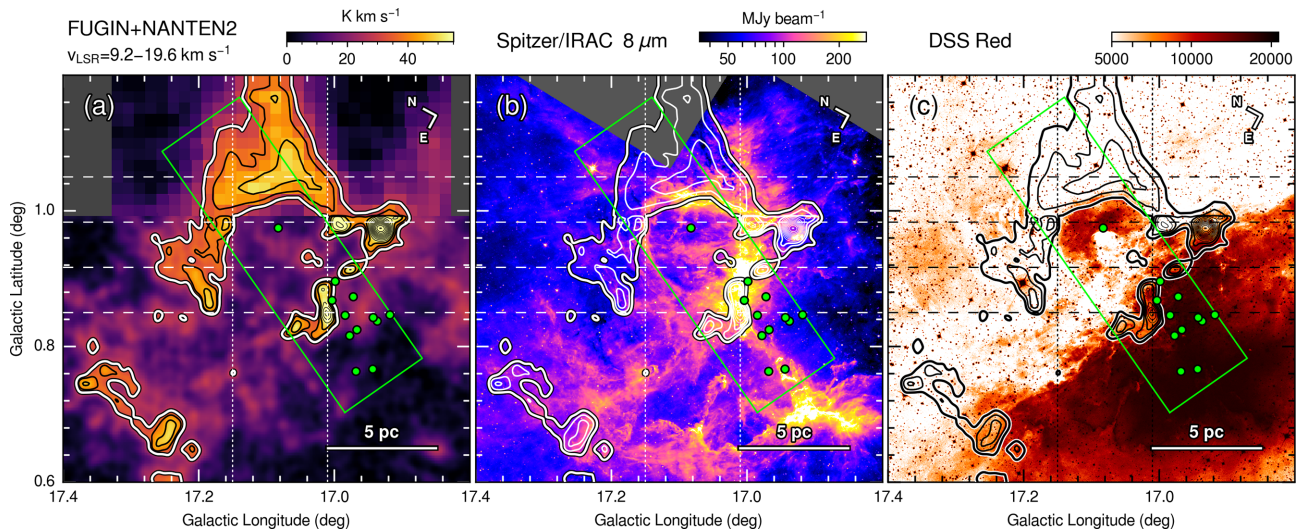
The spatial relationship between the blueshifted and redshifted components is shown in figure 8. The distribution of the redshifted component clearly corresponds to the distribution of the intensity depression of the blueshifted component. In addition, the intensity of the Digitized Sky Survey (DSS) Red (which roughly corresponds to the  $\text{H}\alpha$  emission) is detected in the area where the intensities of both velocity components are depressed. The complementary spatial distributions of the two velocity components and the (proxy)  $\text{H}\alpha$  emission are found for the entire region of the N cloud with a spatial scale of  $\sim 10 \text{ pc}$ . Figure 9 shows a position-velocity diagram with respect to the O star ALS 15348. The integration area and directions are represented by the green rectangle in figure 8. The velocity distribution

shows a V-shape with a maximum velocity of  $30 \text{ km s}^{-1}$  at a distance of  $2 \text{ pc}$  from ALS 15348 at  $(l, b) = (17^\circ 038, 0^\circ 900)$ . The gradient of the intensity peak velocity is steeper toward the cluster side than on the ALS 15348 side.

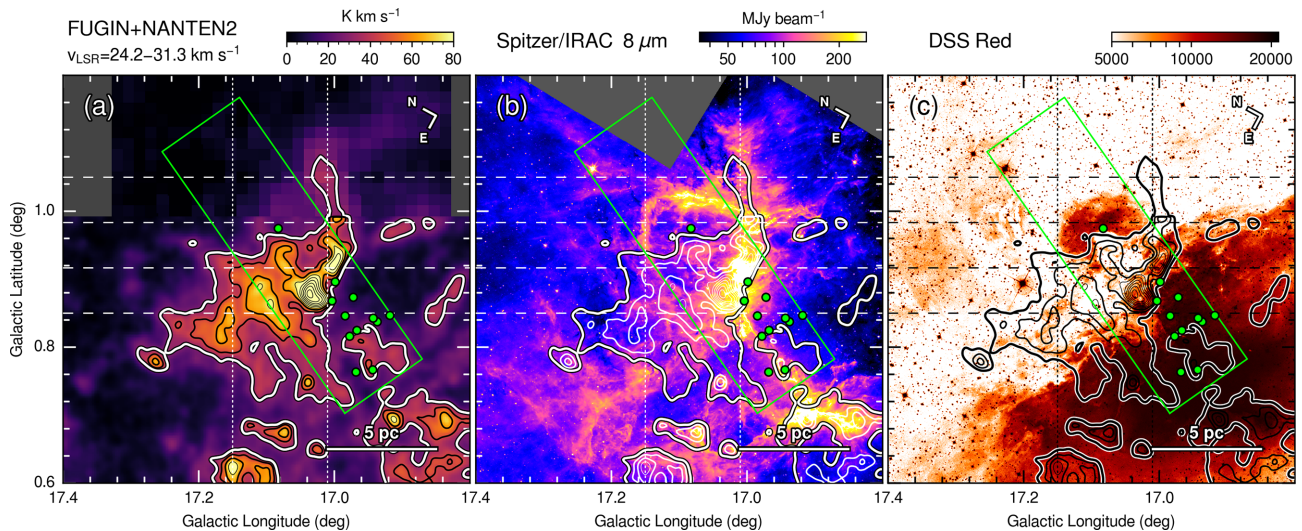
### 3.4 Large-scale velocity distribution

Figure 10 shows an intensity-weighted mean velocity map, with contours showing the integrated  $^{12}\text{CO } J=1-0$  emission intensity for the reference of the distribution of the GMC. On a large scale, the GMC is surrounded by diffuse molecular gas which mainly consists of the redshifted component for the lower longitude and the blueshifted component for the higher longitude. The two velocity components are merged on the GMC. On a smaller scale, some velocity gradients are found on the GMC, whereas the velocity gradient is not clearly seen on a larger scale. In the M 16 GMC, the two velocity components are jumbled and their spatial features seem to be complicated. The GMC consists of blueshifted and redshifted components that are connected by an intermediate-velocity component. For the N cloud, the redshifted component is surrounded by a blueshifted component, which is consistent with their distributions shown in figure 8. The E filament and SE cloud also consist of two velocity components





**Fig. 5.** (a) Spatial distribution of the blueshifted component of the N cloud. The velocity range of  $9.2\text{--}19.6\text{ km s}^{-1}$  is integrated for  $^{12}\text{CO } J = 1\text{--}0$  emission. Contour levels are every  $8\text{ K km s}^{-1}$  from  $30\text{ K km s}^{-1}$ . Dashed horizontal lines show areas that are integrated to make the longitude–velocity diagrams in figure 7. A green rectangle indicates an area which is integrated to make a position–velocity diagram of figure 9. Dotted vertical lines indicate the spatial extent of Spitzer bubble N19. O-type stars (Evans et al. 2005) are shown as green circles. (b) Map of the  $8\text{ }\mu\text{m}$  emission overlaid with the contours of  $^{12}\text{CO } J = 1\text{--}0$ , same as shown in panel (a). (c) Map of the DSS Red image overlaid with the contours of  $^{12}\text{CO } J = 1\text{--}0$ , same as shown in panel (a).

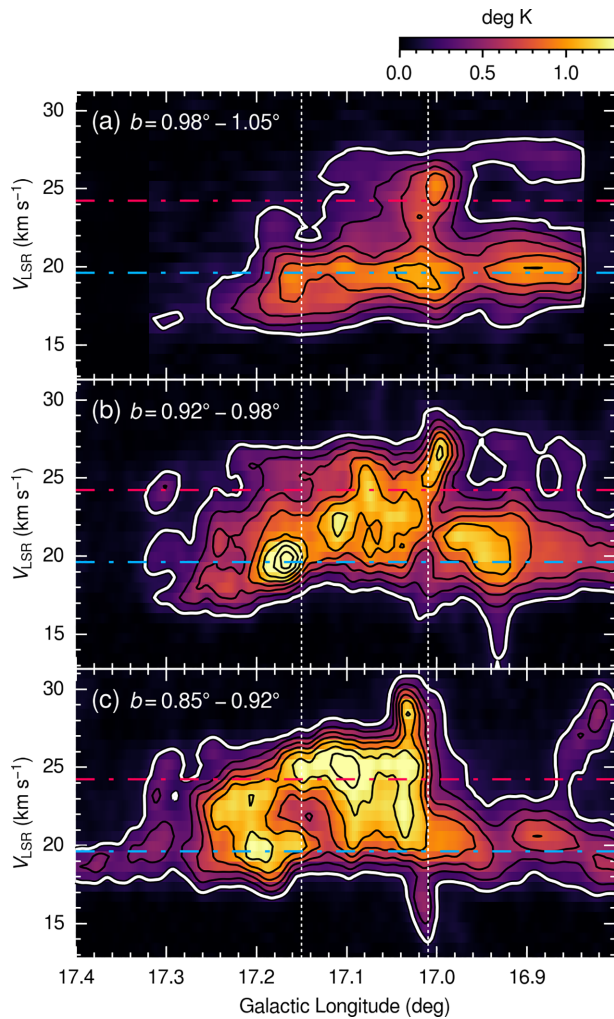


**Fig. 6.** (a) Spatial distribution of the redshifted component of the N cloud. The velocity range of  $24.2\text{--}31.3\text{ km s}^{-1}$  is integrated for  $^{12}\text{CO } J = 1\text{--}0$  emission. Contour levels are every  $15\text{ K km s}^{-1}$  from  $30\text{ K km s}^{-1}$ . Dashed horizontal lines show areas that are integrated to make the longitude–velocity diagrams in figure 7. A green rectangle indicates an area that is integrated to make the position–velocity diagram of figure 9. Dotted vertical lines indicate spatial extent of Spitzer bubble N19. O-type stars (Evans et al. 2005) are shown as green circles. (b) Map of the  $8\text{ }\mu\text{m}$  emission overlaid with the contours of  $^{12}\text{CO } J = 1\text{--}0$ , same as shown in panel (a). (c) Map of the DSS Red image overlaid with the contours of  $^{12}\text{CO } J = 1\text{--}0$ , same as shown in panel (a).

clearly divided by an intermediate-velocity layer, which suggests that they have complementary distributions. The blueshifted and redshifted components in the SE cloud show complementary distributions, as shown in figure 11. The O-type star HD168504 ( $l = 17^{\circ}026$ ,  $b = 0^{\circ}345$ ) is located at the boundary between the two velocity components. The  $24\text{ }\mu\text{m}$  emission, indicating the warm dust mainly heated by the H II region G017.037+00.320

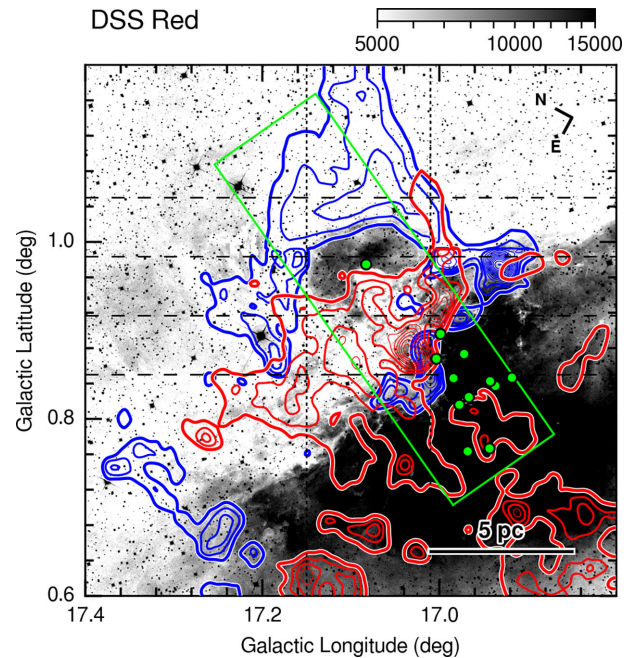
(Anderson et al. 2014), is associated with HD168504 and is distributed in the area where the CO intensities of both velocity components are depressed. The spatial distributions of the two velocity components and the H II region are similar to that of the N cloud.

Figure 12 shows the spatial distributions of the blueshifted and redshifted components of the GMC. The complementary distributions of the N cloud and the SE

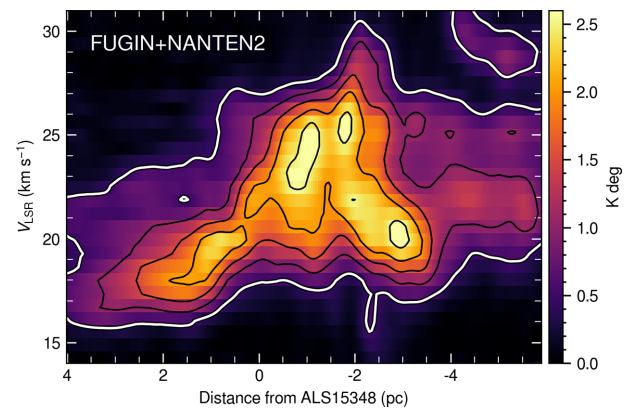


**Fig. 7.** Longitude–velocity ( $l$ - $v$ ) diagrams around the Spitzer bubble N19 for the data of indicates  $^{12}\text{CO } J = 1-0$  taken with the FUGIN and the NANTEN2 telescope. The integrated ranges are (a)  $0.98^\circ$ – $1.05^\circ$ , (b)  $0.92^\circ$ – $0.98^\circ$ , and (c)  $0.85^\circ$ – $0.92^\circ$ . The boundaries of the Spitzer bubble N19 are indicated as dotted vertical lines. Dash-dotted lines indicate the velocity ranges of the blueshifted and redshifted components. Contour levels are every 0.2 K from 0.2 K.

cloud are also clearly shown in the figure. In addition, complementary distributions can be seen for the E filament, the S cloud, and the SE filament. The SE filament mainly consists of a single velocity component of  $v_{\text{LSR}} \sim 15 \text{ km s}^{-1}$ , whereas the redshifted component of the SE cloud surrounds the filament; thus, their spatial relationships are complementary. The spatial relationships of the two velocity components in the E filament and the S cloud are more complicated than in the other subregions, although there are some complementary distributions between them. The two velocity components in the E filament are not clearly separated like in the SE cloud, whereas the intensity peaks of the redshifted component are located in the intensity depression of the blueshifted component, and vice versa. The intensity distribution of the



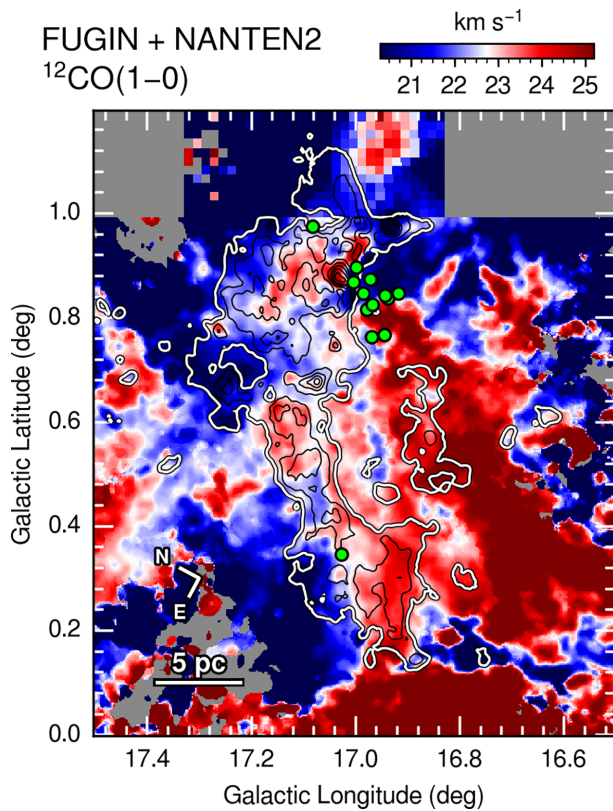
**Fig. 8.** Complementary distributions of the two velocity components in the N cloud. Blue contours indicating the blueshifted component with contour levels of every  $8 \text{ K km s}^{-1}$  from  $30 \text{ K km s}^{-1}$  and red contours indicating the redshifted component with contour levels of every  $15 \text{ K km s}^{-1}$  from  $30 \text{ K km s}^{-1}$  are overlaid on a map of the DSS Red image. Markers and lines are same as figure 5.



**Fig. 9.** Position–velocity diagram of  $^{12}\text{CO } J = 1-0$  toward the area shown by the green rectangle in figure 5. The x axis is a distance from the O star ALS 15348, corresponding to the long side of the rectangle, and the emissions are integrated along the short side of the rectangle. Contour levels are every 0.5 K from 0.5 K.

S cloud is weaker and more diffuse compared to the E filament, whereas the trends of the two velocity components are similar to those of the E filament. Furthermore, complementarity is also found across the entire scale of the GMC. The redshifted component of the GMC is surrounded by blueshifted gas, and the area where the intensity of the redshifted component is depressed within the GMC is filled by a blueshifted component. The blueshifted component in a subregion, which is bounded by the E filament, the SE cloud,





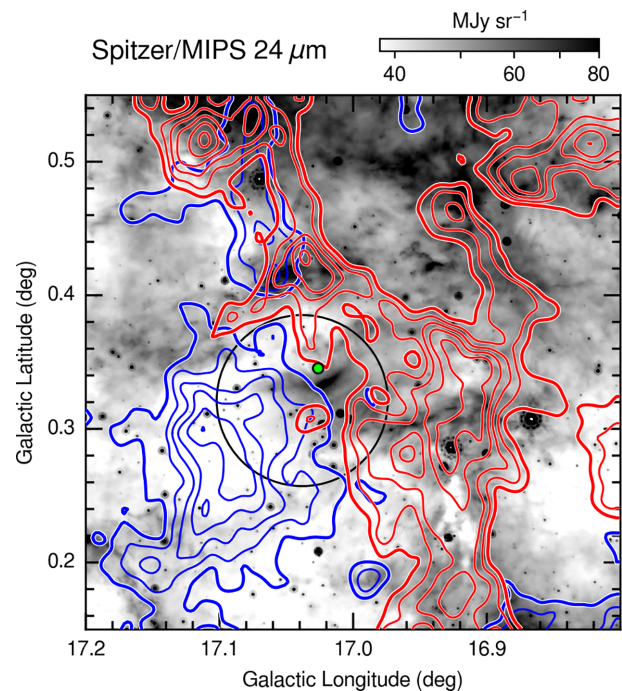
**Fig. 10.** Intensity-weighted mean velocity maps for  $^{12}\text{CO } J = 1-0$  data obtained with FUGIN and NANTEN2. Contours indicate integrated intensity of  $^{12}\text{CO } J = 1-0$  with contour levels for every  $30 \text{ K km s}^{-1}$  from  $80 \text{ K km s}^{-1}$ . O-type stars (Evans et al. 2005) are shown by green circles.

and S cloud, also shows complementary distributions with the redshifted components in the surrounding subregions.

## 4 Discussion

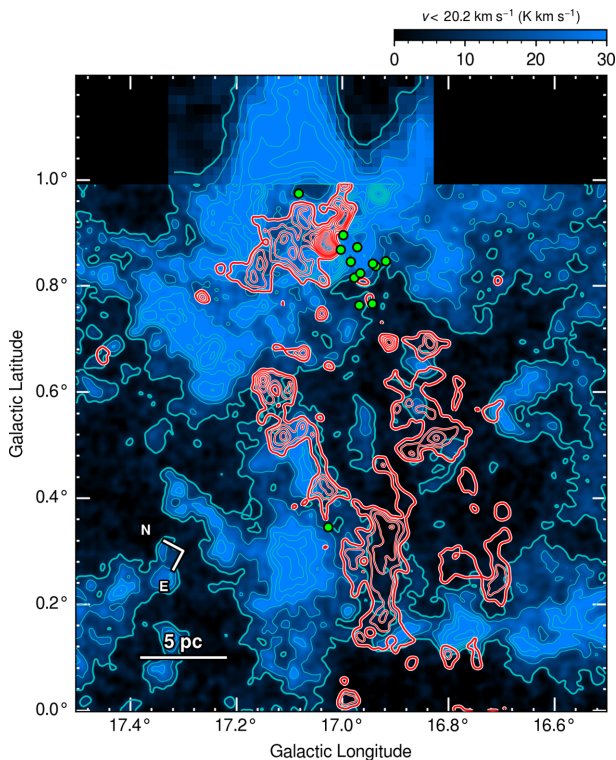
### 4.1 Star formation in the Spitzer bubble N19

In the present study, a careful inspection of the velocity channel distributions of the  $^{12}\text{CO } J = 1-0$  transition revealed that the M16 GMC can be divided into two velocity components, that is, a blueshifted component ( $v_{\text{LSR}} = 9.2\text{--}19.6 \text{ km s}^{-1}$ ) and a redshifted component ( $v_{\text{LSR}} = 24.2\text{--}31.3 \text{ km s}^{-1}$ ), which have significantly different spatial distributions. In particular, the N cloud shows very clear complementary distributions between the two velocity components, whereby a smaller redshifted cloud is surrounded by a larger blueshifted cloud with a definitive boundary between them (figure 8). The complementary distribution of different velocity channels is a signature of colliding clouds (Furukawa et al. 2009; Ohama et al. 2010; Shimoikura et al. 2013; Dobashi et al. 2014; Fukui et al. 2018a). Numerical simulations have shown that a supersonic collision of different-sized molecular clouds



**Fig. 11.** Complementary distributions of the two velocity components in the SE cloud. Blue contours indicating the blueshifted component with contour levels of every  $8 \text{ K km s}^{-1}$  from  $13.4 \text{ K km s}^{-1}$  and red contours indicating the redshifted component with contour levels of every  $8 \text{ K km s}^{-1}$  from  $33.9 \text{ K km s}^{-1}$  are overlaid on a map of the  $24 \mu\text{m}$  emission. O-type stars (Evans et al. 2005) are shown by green circles. Black open circle indicates the position and size of the H II region G017.037+00.320 (Anderson et al. 2014).

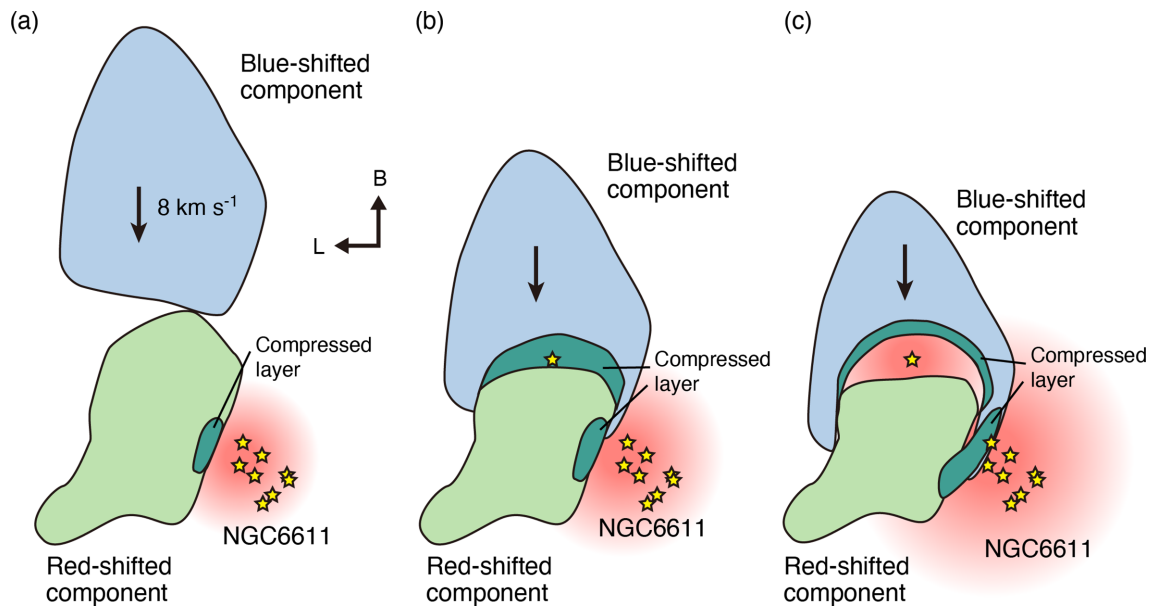
makes a hole behind the collision interface of the larger cloud, where gas from both clouds merges and becomes strongly compressed (Habe & Ohta 1992; Takahira et al. 2014). This hole in the larger cloud coincides with the path of the smaller cloud; therefore, synthetic observations of this event shows a complementary distribution between the two velocity components corresponding to the larger and smaller clouds (Torii et al. 2017; Fukui et al. 2018c). Furthermore, in the case that the collision direction is separated from the line of sight (LOS), the larger cloud is expected to be observed as a ring-like shape opening toward the approaching path of the smaller cloud (Torii et al. 2015). For the N cloud, the blueshifted component shows a ring-like structure opening toward the eastern side, and its opening region is filled with the redshifted component (figure 8). This geometric relation suggests that the collision direction is in an east–west direction. The center velocities of the blueshifted and redshifted components of the N cloud were calculated to be  $18.0$  and  $26.2 \text{ km s}^{-1}$ , respectively, and the velocity separation along the LOS of the two velocity components was  $8.2 \text{ km s}^{-1}$ . Therefore, it is a supersonic collision if the components are colliding. The V-shaped velocity feature found in the N cloud (figure 9) further supports the collision scenario, as studies on



**Fig. 12.** Image of blueshifted component with contours of blueshifted and redshifted components. Velocity integration ranges of blueshifted and redshifted components are  $9.2 \text{ km s}^{-1} < v_{\text{LSR}} < 20.2 \text{ km s}^{-1}$  and  $24.2 \text{ km s}^{-1} < v_{\text{LSR}} < 31.3 \text{ km s}^{-1}$ , respectively. Contour levels for blueshifted and redshifted components are every  $9 \text{ K km s}^{-1}$  from  $9 \text{ K km s}^{-1}$  and  $10 \text{ K km s}^{-1}$  from  $42 \text{ K km s}^{-1}$ , respectively. O-type stars (Evans et al. 2005) are shown by green circles.

numerical simulations have shown that this type of feature is observed in the late phase of collisional interactions of different-sized clouds (Takahira et al. 2014; Haworth et al. 2015a, 2015b; Fukui et al. 2018c). All the results of the detailed analysis of the velocity structure of the molecular gas are consistent with the theoretical findings and indicate that the blueshifted and redshifted components are the result of collisional interactions. The collision velocity is estimated to be  $11.6 \text{ km s}^{-1}$ , if we assume a collision angle of  $45^\circ$  toward the LOS. The timescale of the collision for the N cloud is roughly estimated to be  $\sim 4 \times 10^5 \text{ yr}$  as the cloud size ( $\sim 5 \text{ pc}$ ) divided by the collision velocity. In general, two clouds moving in the same direction, toward the LOS, is rare; therefore, considering the collision direction of the LOS (typically  $45^\circ$ ) is a reasonable assumption. However, the colliding clouds in the region having the same traveling direction is possible. In this case, the collision time scale is  $\sim 30\%$  greater than the estimated value above. The masses of the molecular gas for the blueshifted and redshifted components and their peak column densities are calculated to be  $2.2 \times 10^4 M_\odot$  and  $2.4 \times 10^4 M_\odot$ , and  $2.3 \times 10^{22} \text{ cm}^{-2}$  and  $2.8 \times 10^{22} \text{ cm}^{-2}$ , respectively, assuming an X-factor of  $1.8 \text{ cm}^{-2} \text{ K}^{-1} \text{ km}^{-1} \text{ s}$  (Dame et al. 2001).

The isolated O9V star ALS 15348 (Walker 1961), an ionizing star of the Spitzer bubble N19, is surrounded by an H II region with a radius of  $\sim 1 \text{ pc}$ . The formation timescale of the H II region is roughly estimated to be  $\sim 2 \times 10^5 \text{ yr}$  by assuming a typical velocity of the ionization front of  $\sim 5 \text{ km s}^{-1}$  (Hosokawa & Inutsuka 2005; Fukui et al. 2018a). Therefore, the molecular material surrounding the young H II region may have retained some of the initial material and physical conditions that were present at the time of star formation: such a notion is worthy of investigation. The star is located on the border of the two velocity components at  $l = 17:083$  and  $b = 0:974$  (figures 8 and 12), indicating that the star was possibly formed by collisional interactions. As the velocity separation of the two components is high ( $\sim 8 \text{ km s}^{-1}$ ), the collision induced a high mass accretion rate in the range of from  $10^{-3}$  to  $10^{-4} M_\odot \text{ yr}^{-1}$  (Inoue & Fukui 2013; Inoue et al. 2018). By assuming this high mass accretion rate, ALS 15348 may have formed during an estimated collision time scale of  $\sim 4 \times 10^5 \text{ yr}$ : if true, this timescale can be self-consistently explained by the collision scenario. The Spitzer bubble N19 is classified as a “complete or closed ring” in Churchwell et al. (2006). The “collect and collapse” model (e.g., Elmegreen & Lada 1977) is usually discussed as the origin of the Spitzer bubbles (e.g., Deharveng et al. 2010). In the model, an expanding H II region sweeps up ambient material; therefore, the model predicts that the ambient material possess a particular kind of velocity pattern (Torii et al. 2015). However, the surrounding CO gas of the Spitzer bubble N19 shows no expanding motion (figure 7). We here propose a collision scenario to explain the formation of ALS 15348 and Spitzer bubble N19 following the scheme proposed for other Spitzer bubble RCW 120 (Torii et al. 2015) and RCW 79 (Ohama et al. 2018a). Figure 13 shows a schematic diagram of the collision scenario for the N cloud. Each panel represents the projected spatial distributions of the two velocity components before the collision and during the collision, as well as their current states after the collision. We assumed that the blueshifted component collided with the redshifted component from the direction of higher galactic latitude and farther away along the LOS. We also assumed that the NGC 6611 cluster is associated with the redshifted component, as the  $v_{\text{LSR}}$  value of the cluster member, typically  $\sim 30 \text{ km s}^{-1}$  (Xu et al. 2018), is similar to that of the redshifted component. The age of the NGC 6611 cluster is estimated to be several Myr (Hillenbrand et al. 1993; Belikov et al. 2000; Bonatto et al. 2006); therefore, it is considered that the redshifted component interacted with, and was compressed by, the feedback from the cluster before the blueshifted component started to collide with it (figure 13a). After contact was made between the two velocity components (figure 13b), the interface layer



**Fig. 13.** Schematic diagrams of the collision between the two velocity components of the N cloud seen in the sky. (a) The two components begin collision  $4 \times 10^5$  yr ago. We assume that the NGC 6611 cluster is formed and associated with the redshifted component at this time. Boundary of the redshifted component toward the cluster is interacted with the feedback from the cluster and is compressed. (b) The small cloud (the redshifted component) created a cavity in the large cloud (the blueshifted component), and the O star ALS 15348 was formed  $\sim 10^5$  yr after the collision started. (c) Current status of the N cloud. The cavity was ionized and the small cloud inside the cavity was dissipated by collision and ionization. Since the ionization is still ongoing, the remnant of the small cloud located behind the ionization front. The large cloud is colliding from far side of the LOS; therefore, the small cloud is located near side to the observer.

was likely compressed strongly, as intimated by the scheme proposed by Torii et al. (2015), which was seen in other numerical simulations (Habe & Ohta 1992; Anathpindika 2009a, 2009b, 2010; Inoue & Fukui 2013; Takahira et al. 2014, 2018; Matsumoto et al. 2015; Wu et al. 2015, 2017b, 2018; Inoue et al. 2018). An O9 type star that formed in  $\sim 10^5$  yr in the shocked layer likely ionized the two surrounding velocity components by ultraviolet (UV) feedback with a few  $10^5$  yr (figure 13c). The H II region eventually formed between the two velocity components, as currently observed.

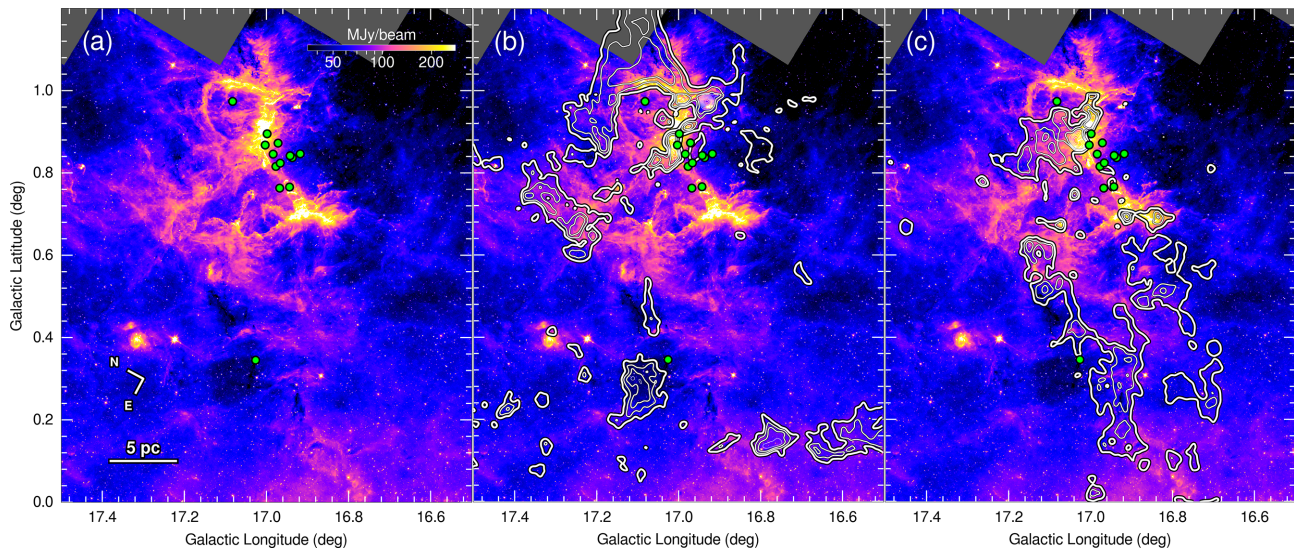
The UV feedback from the O-type stars in the NGC 6611 cluster and ALS 15348 is another possible explanation for the distribution of the two velocity components, as the N cloud is obviously affected by strong feedback (see figures 5b and 6b). If the cloud was accelerated by the feedback, a velocity shift as a function of distance from the stars should exist. However, the intensity-weighted mean velocity map shows no clear velocity gradient centered at the O-type stars (figure 10). Furthermore, it is highly unlikely that the UV feedback accelerated the different components to create the large-scale complementary distribution ( $\sim 5$  pc) as observed. Therefore, the UV feedback does not seem to explain the existence of the two velocity components in the N cloud adequately.

## 4.2 Star formation in the SE cloud

In addition to the N cloud, complementary distributions were also found in the SE cloud (figures 10 and 12). In this region, the two velocity components do not surround each other, as seen for the N cloud; rather, they are distributed mutually exclusively and are connected only on one side of the component boundary. Synthetic observations from numerical simulations of collisions of similar-sized clouds showed similar types of complementary distributions, whereby a compressed layer formed as a plane between two clouds, and the clouds were observed as two velocity components bordered by the shocked layer (Wu et al. 2017b; Bisbas et al. 2017). It is, therefore, possible that the two velocity components in the SE cloud are the result of colliding clouds. If this is true, then the collision velocities are likely to be similar to those in the N cloud.

The O7.5V star HD 168504 is isolated from other O-type stars in M16, and its similar distance, radial velocity, and proper motion with the NGC 6611 cluster (Xu et al. 2018) suggest that it is associated with the M16 GMC. HD 168504 is located at the center of the SE cloud in the integrated intensity map (figure 3), which is also along the border of two velocity components at  $l = 17^\circ 026$  and  $b = 0^\circ 345$  (figure 11). Its position indicates that the star's formation was possibly triggered by the collision of





**Fig. 14.** (a) Map of the  $8\ \mu\text{m}$  emission. O-type stars (Evans et al. 2005) are shown by green circles. (b) Same as panel (a) but overlaid with contours indicating the blueshifted components. Contour levels are every  $10\ \text{K km s}^{-1}$  from  $22\ \text{K km s}^{-1}$ . (c) Same as panel (a) but overlaid with contours indicating the redshifted components. Contour levels are every  $15\ \text{K km s}^{-1}$  from  $40\ \text{K km s}^{-1}$ .

the two velocity components. As the velocity separation of the two components is high ( $\sim 8\ \text{km s}^{-1}$ ), the collision was able to enhance the mass accretion rate enough to form HD 168504; this scenario was also proposed to explain the formation of the O9V star ALS 15348 (see subsection 4.1). The spatial relationships among the two velocity components and the H II region around HD 168504 are also very similar to the case of the N cloud. The blueshifted and redshifted components are complementarily distributed, and the cavity of the two velocity components corresponds to the distribution of the H II region associated with the star. We, therefore, conclude that HD 168504 possibly formed by the same collision event as ALS 15348.

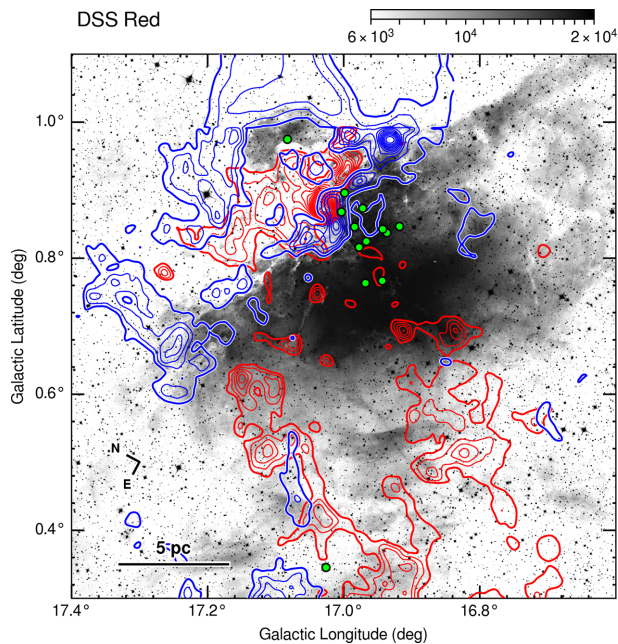
Another possibility that explains the existence of the two velocity components is the UV feedback from the NGC 6611 cluster. Figure 14 shows the spatial distribution of the  $8\ \mu\text{m}$  emission and the two velocity components of the CO emission. The cluster sides of the redshifted component of the E filament and the SE cloud are associated in the  $8\ \mu\text{m}$  emission, indicating that the components interacted with, and are affected by the UV emission from the cluster. A temperature decrease was found in the E filament as a function of distance from the cluster. The temperature peaks at the boundary of the cluster side of the filament and decreases with increasing distance from the cluster (see the panel of  $23.0\ \text{km s}^{-1}$  in figure 4). The SE cloud shows no clear temperature gradient in the direction to the cluster. These trends of temperature distribution of the molecular gas are similar to the observations of dust temperature made by Herschel (Hill et al. 2012). In addition, the velocity gradients in the direction to the

cluster are not found in the E filament or the SE cloud. We, therefore, conclude here that while the UV emission from the cluster is heating the E filament, it does not accelerate the E filament or the SE cloud, and hence it cannot be the cause of the two observed velocity components.

#### 4.3 Possibility of the formation of the NGC 6611 cluster by a cloud collision

The NGC 6611 cluster is a more active and older system than the regions discussed above: the cluster contains 13 O-type stars (Evans et al. 2005), and its age is estimated to be several Myr (Hillenbrand et al. 1993; Belikov et al. 2000; Bonatto et al. 2006). The molecular gas surrounding the cluster was heavily dissociated and dispersed by the UV feedback from the cluster, and hence it is difficult to find any initial conditions of the cluster formation from the molecular remnant directly. However, the complementarity of the spatial distributions of the two velocity components and the H II region around the cluster is similar to that found in the N and SE clouds (figure 15), implying that a similar mechanism might originate the cluster. The complementary distribution of molecular gas found in the S cloud and the SE filament, and indeed across the entire scale of the GMC (see subsection 3.4, figure 12), suggests that the GMC possibly experienced a cloud–cloud collision on a global scale. It is, therefore, still possible that the cluster was formed by a cloud collision that occurred prior to the current collision by several million years. The GMC is located in the Sagittarius Arm, which also contains several CO clouds along the galactic plane around M 16 and M 17 (figure 1b).





**Fig. 15.** Complementary distributions of the two velocity components in the M16 GMC around the NGC 6611 cluster. Blue contours indicating the blueshifted component with contour levels of every  $10 \text{ K km s}^{-1}$  from  $30 \text{ K km s}^{-1}$  and red contours indicating the redshifted component with contour levels of every  $10 \text{ K km s}^{-1}$  from  $40 \text{ K km s}^{-1}$  are overlaid on a map of the DSS Red image. Velocity integration ranges of blueshifted and redshifted components are  $9.2 \text{ km s}^{-1} < v_{\text{LSR}} < 20.2 \text{ km s}^{-1}$  and  $24.2 \text{ km s}^{-1} < v_{\text{LSR}} < 31.3 \text{ km s}^{-1}$ , respectively. Markers are same as figure 5.

M16 and M17 may potentially have arisen from multiple natal-cloud collisions because the high number density of molecular clouds favors more frequent collisions than the average in the galactic disk. Furthermore, the M16 GMC is located at the boundary of a molecular shell (Moriguchi et al. 2002; Guarcello et al. 2010; Comerón & Torra 2018; see also figure 1b) that might have formed by the past feedback from ancient OB-type stars and supernova explosions, indicating that the GMC has possibly interacted with the shell. If the M16 GMC has originated from the interaction between galactic atomic/molecular clouds and the shell, the GMC might have experienced multiple events.

## 5 Conclusions

We analyzed large-scale CO distributions of the region of M16, the Eagle Nebula, taken with NANTEN2 and the FUGIN project. A GMC of  $1.3 \times 10^5 M_{\odot}$  is associated with M16, which extends perpendicularly to the galactic plane over 35 pc at a distance of 1.8 kpc. The cloud consists of two velocity components, that show complementary spatial distributions, suggesting dynamical interactions between them. We, hence, summarize the present work as follows:

1. The M16 GMC has a size of  $10 \text{ pc} \times 30 \text{ pc}$  in  $l$  and  $b$ , and shows two velocity components of  $9.2\text{--}19.6 \text{ km s}^{-1}$  (blueshifted component) and  $24.2\text{--}31.3 \text{ km s}^{-1}$  (redshifted component). The total mass of the GMC is estimated to be  $1.3 \times 10^5 M_{\odot}$  determined from the  $^{12}\text{CO } J=1\text{--}0$  transition observations, using an  $X_{\text{CO}}$  factor of  $1.8 \times 10^{20} \text{ cm}^{-2} \text{ K}^{-1} \text{ km s}^{-1}$ . The GMC mainly consists of the N cloud, E filament, SE cloud, SE filament, and S cloud.
2. The GMC is associated with 13 known O-type stars, most of which are within the NGC 6611 cluster. We saw a clear intensity depression of molecular gas toward the O stars, which is likely due to photoionization: one is toward the heart of the Eagle Nebula at  $(l, b = 16:95, 0:85)$  and the other is toward the Spitzer bubble N19 ( $l, b = 17:06, 1:0$ ).
3. For the N cloud, the blueshifted component shows a ring-like structure, and the distribution of the redshifted component coincides with the intensity depression of the blueshifted component. This complementary distribution, as well as their different velocities, suggests that larger and smaller clouds are colliding. The V-shaped velocity feature found in the N cloud also supports this collision. The collision velocity and timescale were estimated to be  $11.6 \text{ km s}^{-1}$  and  $\sim 4 \times 10^5 \text{ yr}$ , respectively.
4. The isolated O9V star ALS 15348, an ionizing star of the Spitzer bubble N19, is located at the boundary of the two velocity components, which indicates that it possibly formed by compression arising from the collision between the components. The star is surrounded by an H II region with a size of  $\sim 1 \text{ pc}$ , the distribution of which coincides with the intensity depression of the two velocity components. The collision scenario consistently explains the geometry of the molecular gas, O-type star, and H II region and the timescale of O-type star formation therein.
5. For the SE cloud, the blueshifted and redshifted components show complementary distributions, indicating that similar-sized clouds are colliding. The isolated O7.5V star HD 168504 is located at the boundary of the two velocity components, and the spatial relationship among the molecular cloud, H II region, and O-type star is similar to those of ALS 15348, indicating that HD 168504 may have possibly formed during the same process that resulted in ALS 15348.
6. Cluster NGC 6611, which contains older stellar members aged several  $10^6 \text{ yr}$ , ionized the surrounding molecular material, and it is therefore difficult to investigate the initial conditions of star formation. However, the existence of complementary large-scale distributions implies that an older cloud collision may have occurred several  $10^6 \text{ yr}$  ago. Because the M16 GMC is located in the Sagittarius Arm and at the boundary of a

molecular shell, the frequency of cloud collisions could theoretically be enhanced. Therefore, if we assume that the GMC experienced multiple collision events within several  $10^6$  yr, it is possible that the NGC 6611 cluster formed during an older collision event.

## Acknowledgment

This work was supported by JSPS KAKENHI grant numbers, 15H05694, 17H06740, 18K13580. The authors would like to thank the members of the NANTEN2 group for support on the observation and telescope operation. The authors would like to thank the members of the 45 m group of Nobeyama Radio Observatory for support during the observation. The Nobeyama 45 m radio telescope is operated by Nobeyama Radio Observatory, a branch of National Astronomical Observatory of Japan. Data analysis was carried out on the open use data analysis computer system at the Astronomy Data Center, ADC, of the National Astronomical Observatory of Japan. This research made use of astropy, a community-developed core Python package for Astronomy (Astropy Collaboration 2013), in addition to NumPy and SciPy (van der Walt et al. 2011), Matplotlib (Hunter 2007), and IPython (Pérez et al. 2007). This research has made use of the VizieR catalogue access tool, CDS, Strasbourg, France. The original description of the VizieR service was published in Ochsenbein, Bauer, and Marcout (2000).

## References

- Anathpindika, S. 2009a, *A&A*, 504, 437  
 Anathpindika, S. 2009b, *A&A*, 504, 451  
 Anathpindika, S. V. 2010, *MNRAS*, 405, 1431  
 Anderson, L. D., Bania, T. M., Balser, D. S., Cunningham, V., Wenger, T. V., Johnstone, B. M., & Armentrout, W. P. 2014, *ApJS*, 212, 1  
 Astropy Collaboration 2013, *A&A*, 558, A33  
 Belikov, A. N., Kharchenko, N. V., Piskunov, A. E., & Schilbach, E. 2000, *A&A*, 358, 886  
 Bisbas, T. G., Tanaka, K. E. I., Tan, J. C., Wu, B., & Nakamura, F. 2017, *ApJ*, 850, 23  
 Bonatto, C., Santos, J. F. C., & Bica, E., Jr. 2006, *A&A*, 445, 567  
 Churchwell, E., et al. 2006, *ApJ*, 649, 759  
 Comerón, F., & Torra, J. 2018, *A&A*, 618, A67  
 Dame, T. M., Hartmann, D., & Thaddeus, P. 2001, *ApJ*, 547, 792  
 Deharveng, L., et al. 2010, *A&A*, 523, A6  
 Dobashi, K., Matsumoto, T., Shimoikura, T., Saito, H., Akisato, K., Ohashi, K., & Nakagomi, K. 2014, *ApJ*, 797, 58  
 Dobashi, K., Shimoikura, T., Katakura, S., Nakamura, F., & Shimajiri, Y. 2019, *PASJ*, 71, S12  
 Dufton, P. L., et al. 2006, *A&A*, 457, 265  
 Elmegreen, B. G., & Lada, C. J. 1977, *ApJ*, 214, 725  
 Enokiya, R., et al. 2018, *PASJ*, 70, S49  
 Enokiya, R., et al. 2021a, *PASJ*, 73, S256  
 Enokiya, R., Torii, K., & Fukui, Y. 2021b, *PASJ*, 73, S75  
 Evans, C. J., et al. 2005, *A&A*, 437, 467  
 Fujita, S., et al. 2019, *ApJ*, 872, 49  
 Fujita, S., et al. 2021a, *PASJ*, 73, S172  
 Fujita, S., et al. 2021b, *PASJ*, 73, S273  
 Fukui, Y., et al. 2014, *ApJ*, 780, 36  
 Fukui, Y., et al. 2015, *ApJ*, 807, L4  
 Fukui, Y., et al. 2016, *ApJ*, 820, 26  
 Fukui, Y., et al. 2018a, *ApJ*, 859, 166  
 Fukui, Y., et al. 2018b, *PASJ*, 70, S41  
 Fukui, Y., et al. 2018c, *PASJ*, 70, S44  
 Fukui, Y., et al. 2018d, *PASJ*, 70, S46  
 Fukui, Y., Tsuge, K., Sano, H., Bekki, K., Yozin, C., Tachihara, K., & Inoue, T. 2017, *PASJ*, 69, L5  
 Furukawa, N., Dawson, J. R., Ohama, A., Kawamura, A., Mizuno, N., Onishi, T., & Fukui, Y. 2009, *ApJ*, 696, L115  
 Guarcello, M. G., Micela, G., Peres, G., Prisinzano, L., & Sciortino, S. 2010, *A&A*, 521, A61  
 Guarcello, M. G., Prisinzano, L., Micela, G., Damiani, F., Peres, G., & Sciortino, S. 2007, *A&A*, 462, 245  
 Gum, C. S. 1955, *Mem. R. Astron. Soc.*, 67, 155  
 Habe, A., & Ohta, K. 1992, *PASJ*, 44, 203  
 Haworth, T. J., et al. 2015a, *MNRAS*, 450, 10  
 Haworth, T. J., Shima, K., Tasker, E. J., Fukui, Y., Torii, K., Dale, J. E., Takahira, K., & Habe, A. 2015b, *MNRAS*, 454, 1634  
 Hayashi, K., et al. 2018, *PASJ*, 70, S48  
 Hester, J. J., et al. 1996, *AJ*, 111, 2349  
 Hill, T., et al. 2012, *A&A*, 542, A114  
 Hillenbrand, L. A., Massey, P., Strom, S. E., & Merrill, K. M. 1993, *AJ*, 106, 1906  
 Hosokawa, T., & Inutsuka, S. 2005, *ApJ*, 623, 917  
 Hunter, J. D. 2007, *Comput. Sci. Eng.*, 9, 90  
 Inoue, T., & Fukui, Y. 2013, *ApJ*, 774, L31  
 Inoue, T., Hennebelle, P., Fukui, Y., Matsumoto, T., Iwasaki, K., & Inutsuka, S. 2018, *PASJ*, 70, S53  
 Ishii, S., Nakamura, F., Shimajiri, Y., Kawabe, R., Tsukagoshi, T., Dobashi, K., & Shimoikura, T. 2019, *PASJ*, 71, S9  
 Kamazaki, T., et al. 2012, *PASJ*, 64, 29  
 Kohno, M., et al. 2018, *PASJ*, 70, S50  
 Kohno, M., et al. 2021, *PASJ*, 73, S338  
 Kuno, N., et al. 2011, in *Proc. 2011 XXXth URSI General Assembly and Scientific Symposium*, Vol. 1 (New York: IEEE), 3670  
 Kuwahara, S., Torii, K., Mizuno, N., Fujita, S., Kohno, M., & Fukui, Y. 2021, *PASJ*, 73, S220  
 Levay, Z. G., et al. 2015, *Abstracts, Am. Astron. Soc. Meeting*, 225, 436.02  
 Matsumoto, T., Dobashi, K., & Shimoikura, T. 2015, *ApJ*, 801, 77  
 Minamidani, T., et al. 2016, *Proc. SPIE*, 9914, 99141Z  
 Mizuno, A., & Fukui, Y. 2004, in *ASP Conf. Ser.*, 317, *Milky Way Surveys: The Structure and Evolution of our Galaxy*, ed. D. Clemens et al. (San Francisco: ASP), 59  
 Moriguchi, Y., Onishi, T., Mizuno, A., & Fukui, Y. 2002, in *IAU 8th Asian-Pacific Regional Meeting, Volume II*, ed. S. Ikeuchi et al. (Tokyo: ASJ), 173  
 Nakamura, F., et al. 2019, *PASJ*, 71, S10  
 Nishimura, A., et al. 2015, *ApJS*, 216, 18  
 Nishimura, A., et al. 2018, *PASJ*, 70, S42  
 Ochsenbein, F., Bauer, P., & Marcout, J. 2000, *A&AS*, 143, 23  
 Ohama, A., et al. 2010, *ApJ*, 709, 975  
 Ohama, A., et al. 2018a, *PASJ*, 70, S45  
 Ohama, A., et al. 2018b, *PASJ*, 70, S47  
 Oliveira, J. M. 2008, in *Handbook of Star Forming Regions*, Vol. II: *The Southern Sky*, ed. B. Reipurth (San Francisco: ASP), 599

- Pérez, F., & Granger, B. 2007, *Comput. Sci. Eng.*, 9(3), 21
- Pety, J., et al. 2017, *A&A*, 599, A98
- Povich, M. S., et al. 2013, *ApJS*, 209, 31
- Rodgers, A. W., Campbell, C. T., & Whiteoak, J. B. 1960, *MNRAS*, 121, 103
- Sano, H., et al. 2018, *PASJ*, 70, S43
- Sawada, T., et al. 2008, *PASJ*, 60, 445
- Sharpless, S. 1959, *ApJS*, 4, 257
- Shimoikura, T., et al. 2013, *ApJ*, 768, 72
- Shimoikura, T., Dobashi, K., Hirose, A., Nakamura, F., Shimajiri, Y., & Sugitani, K. 2019, *PASJ*, 71, S6
- Spitzer, L., Jr. 1968, *Diffuse Matter in Space* (New York: Interscience)
- Sugitani, K., Fukui, Y., & Ogura, K. 1991, *ApJS*, 77, 59
- Sugitani, K., Fukui, Y., Ogawa, H., & Kawabata, K. 1986, *ApJ*, 303, 667
- Takahira, K., Shima, K., Habe, A., & Tasker, E. J. 2018, *PASJ*, 70, S58
- Takahira, K., Tasker, E. J., & Habe, A. 2014, *ApJ*, 792, 63
- Takekoshi, T., et al. 2019, *ApJ*, 883, 156
- Tanabe, Y., et al. 2019, *PASJ*, 71, S8
- Torii, K., et al. 2011, *ApJ*, 738, 46
- Torii, K., et al. 2015, *ApJ*, 806, 7
- Torii, K., et al. 2017, *ApJ*, 835, 142
- Torii, K., et al. 2018, *PASJ*, 70, S51
- Torii, K., et al. 2019, *PASJ*, 71, S2
- Torii, K., et al. 2021, *PASJ*, 73, S368
- Umemoto, T., et al. 2017, *PASJ*, 69, 78
- van der Walt, S., Colbert, S. C., & Varoquaux, G. 2011, *Comput. Sci. Eng.*, 13(2), 22
- Walker, M. F. 1961, *ApJ*, 133, 438
- Westerhout, G. 1958, *Bull. Astron. Inst. Netherlands*, 14, 215
- Wolff, S. C., Strom, S. E., Dror, D., & Venn, K. 2007, *AJ*, 133, 1092
- Wu, B., Tan, J. C., Nakamura, F., Christie, D., & Li, Q. 2018, *PASJ*, 70, S57
- Wu, B., Tan, J. C., Nakamura, F., Van Loo, S., Christie, D., & Collins, D. 2017b, *ApJ*, 835, 137
- Wu, B., Van Loo, S., Tan, J. C., & Bruderer, S. 2015, *ApJ*, 811, 56
- Xu, Y., et al. 2018, *A&A*, 616, L15
- Yamagishi, M., et al. 2016, *ApJ*, 833, 163
- Yamagishi, M., et al. 2018, *ApJS*, 235, 9
- Zinnecker, H., & Yorke, H. W. 2007, *ARA&A*, 45, 481