

# Discovery of a transient X-ray source Suzaku J1305–4930 in NGC 4945

Shuntaro IDE,<sup>1,\*</sup> Kiyoshi HAYASHIDA,<sup>1,2,3</sup> Hirofumi NODA,<sup>1,2</sup> Hiroyuki KURUBI,<sup>1</sup>  
Tomokage YONEYAMA,<sup>1</sup> and Hironori MATSUMOTO<sup>1,2</sup>

<sup>1</sup>Department of Earth and Space Science, Graduate School of Science, Osaka University, 1-1 Machikaneyama-cho, Toyonaka, Osaka 560-0043, Japan

<sup>2</sup>Project Research Center for Fundamental Sciences, Graduate School of Science, Osaka University, 1-1 Machikaneyama-cho, Toyonaka, Osaka 560-0043, Japan

<sup>3</sup>Japan Aerospace Exploration Agency, Institute of Space and Astronautical Science, 3-1-1 Yoshinodai, Chuo-ku, Sagami-hara, Kanagawa 252-5210, Japan

\*E-mail: [shunta@ess.sci.osaka-u.ac.jp](mailto:shunta@ess.sci.osaka-u.ac.jp)

Received 2019 September 10; Accepted 2020 March 6

## Abstract

We report the serendipitous discovery of a transient X-ray source, Suzaku J1305–4930,  $\sim 3$  kpc southwest of the nucleus of the Seyfert 2 galaxy NGC 4945. Among the seven Suzaku observations of NGC 4945 from 2005 to 2011, Suzaku J1305–4930 was detected four times in July and August in 2010. The X-ray spectra are better approximated with a multi-color disk model than a power-law model. At the first detection on 2010 July 4–5, its X-ray luminosity was  $(8.9^{+0.2}_{-0.4}) \times 10^{38}$  erg s<sup>−1</sup> and the temperature at the inner-disk radius ( $kT_{\text{in}}$ ) was  $1.12 \pm 0.04$  keV. At the last detection with Suzaku on 2010 August 4–5, the luminosity decreased to  $(2.2^{+0.3}_{-0.8}) \times 10^{38}$  erg s<sup>−1</sup> and  $kT_{\text{in}}$  was  $0.62 \pm 0.07$  keV. The source was not detected on 2011 January 29, about six months after the first detection, with a luminosity upper limit of  $2.4 \times 10^{38}$  erg s<sup>−1</sup>. We also find an absorption feature which is similar to that reported in Cyg X-1. Assuming the standard disk, we suggest that Suzaku J1305–4930 consists of a black hole with a mass of  $\sim 10 M_{\odot}$ . The relation between the disk luminosity and  $kT_{\text{in}}$  is not reproduced with the standard model of a constant inner radius but is better approximated with a slim-disk model.

**Key words:** X-rays: galaxies — galaxies: individual (NGC 4945) — X-rays: galaxies — methods: observational — accretion, accretion disks

## 1 Introduction

NGC 4945 is a nearby ( $\sim 3.72$  Mpc; Tully et al. 2013) spiral galaxy with an edge-on configuration (inclination  $i \sim 78^\circ$ ; Ott et al. 2001). It hosts a heavily ( $N_{\text{H}} = 4.0 \times 10^{24}$  cm<sup>−2</sup>) absorbed Seyfert nucleus, which is one of the apparently brightest active galactic nuclei (AGNi) in the hard X-ray band above 20 keV (Guainazzi et al. 2000; Done et al. 2003). The mass of the central black hole is constrained by

H<sub>2</sub>O megamaser observations to be  $M_{\text{BH}} \sim 1.4 \times 10^6 M_{\odot}$  (Greenhill et al. 1997).

Several bright X-ray sources are reported in NGC 4945 (Kaaret & Alonso-Herrero 2008; Guainazzi et al. 2000; Schurch et al. 2002), some of which are classified as ultra-luminous X-ray sources (ULXs, as defined in Feng & Kaaret 2005). A transient ULX was discovered in a Suzaku observation of NGC 4945 in 2006 (Isobe et al. 2008). Its bolometric luminosity ( $L_{\text{bol}}$ ) was  $4.4 \times 10^{39} \alpha$  erg s<sup>−1</sup>, where  $\alpha$  is

**Table 1.** List of the Suzaku observations of NGC 4945.

OBSID	Observation date	Exposure (ks)	ID
100008010	2005-08-22	14.02	2005 1st
100008030	2006-01-15	95.07	2006 1st
705047010	2010-07-04	39.07	2010 1st
705047020	2010-07-09	44.15	2010 2nd
705047030	2010-07-26	40.33	2010 3rd
705047040	2010-08-30	39.39	2010 4th
705047050	2011-01-29	46.11	2011 1st

( $\cos 60^\circ / \cos i$ ), corresponding to the Eddington luminosity for a source of a mass of  $20 M_\odot$ . The source showed the relation of the Stefan Boltzmann's law  $L_{\text{bol}} \propto T_{\text{in}}^4$  (where  $T_{\text{in}}$  is the temperature at the inner disk radius), which is a typical characteristic of the standard accretion disk. The innermost disk radius in this scenario is estimated to be  $R_{\text{in}} = 68 \pm 4 \text{ km}$ , implying the mass of the black hole to be  $M_{\text{BH}} = 9 M_\odot$ , providing that it is a non-rotating black hole. Isobe et al. (2008) alternatively interpreted this source with emission from a spinning black hole with  $20\text{--}130 M_\odot$ .

ULXs in nearby galaxies have been targets of extensive studies. Whereas intensive observation campaigns for individual sources have been performed in our galaxy, the Large Magellanic Cloud, and the Small Magellanic Cloud, intensive observations to such an extent have been a rarity for more distant galaxies, except for several ULXs, e.g., NGC 1313 X-2 (Weng et al. 2014) and Ho IX X-1 (Jithesh et al. 2017). In this paper, we report our serendipitous discovery and frequent monitoring observations of a transient X-ray source in NGC 4945 with Suzaku. It was nearly ultra-luminous, with a highest observed luminosity of  $8.9 \times 10^{38} \text{ erg s}^{-1}$ .

In this paper, the uncertainties quoted in the tables represent a 90% confidence level whereas those in the figures and text have a 68% confidence level. Spectral model fitting is performed with the software XSPEC released as a part of the HEASOFT package (version 6.25). We define  $L_x$  as the unabsorbed luminosity in the 0.3–10 keV band and  $L_{\text{disk}}$  as the bolometric luminosity of the disk.

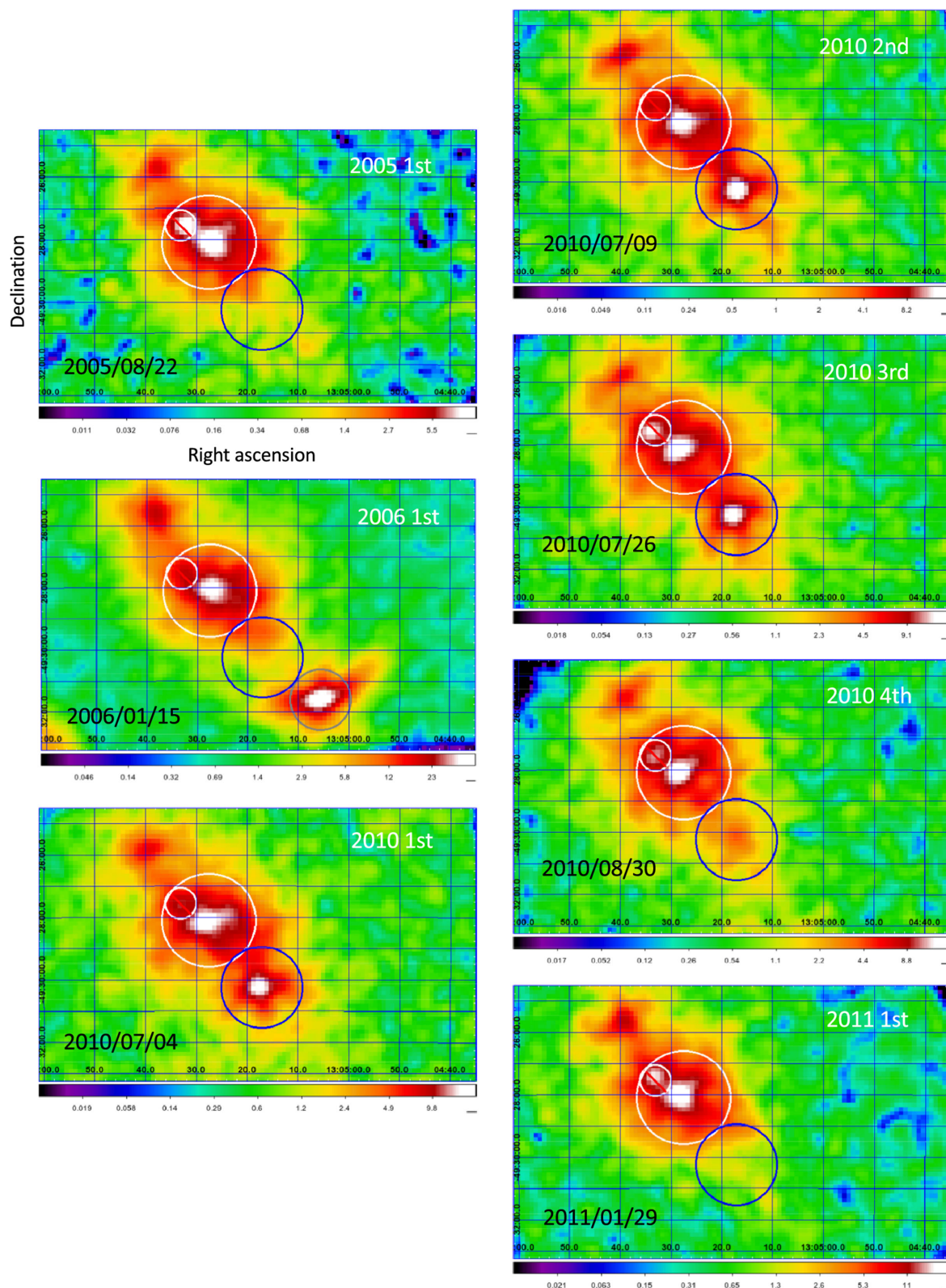
## 2 Observations and data reduction

NGC 4945 was observed seven times with the fifth Japanese X-ray satellite Suzaku; once in 2005, once in 2006, four times in 2010, and once in 2011, as summarized in table 1. We employed the X-ray Imaging Spectrometer (XIS: Koyama et al. 2007) onboard Suzaku, consisting of three front-illuminated (FI) X-ray CCD cameras called XIS 0, 2, 3, and a back-illuminated (BI) X-ray camera called XIS 1.

They were operated in the normal full-window mode in all the observations. In this paper, we analyzed the cleaned event datasets (processing script version 3.0.22.43) of XIS 0 and XIS 3 prepared with the standard screenings, which exclude events with an Earth elevation angle lower than  $5^\circ$  or Earth day-time elevation angles lower than  $20^\circ$ , and those in the South Atlantic Anomaly. Although the hard X-ray detectors (HXD; Takahashi et al. 2007; Kokubun et al. 2007) were also operated, we did not use their data in the results reported in this paper.

Figure 1 shows X-ray images of NGC 4945 obtained by XIS 0 in the seven observations. Note that the sky coordinates in the original Suzaku data have offsets of about  $0.5'$ . We corrected those offsets by referring to Chandra X-ray images of NGC 4945. In all of them, the active galactic nucleus (AGN) at  $(\alpha, \delta) (\text{J2000.0}) = (13^{\text{h}}05^{\text{m}}27^{\text{s}}.5, -49^\circ28'06'')$  showed consistently bright and unresolved emission extending up to about 10 kpc from the central AGN. In addition, a bright X-ray point source appeared at  $(\alpha, \delta) (\text{J2000.0}) = (13^{\text{h}}05^{\text{m}}05^{\text{s}}.5, -49^\circ31'39'')$  (marked with a gray circle in figure 1), about  $5'$  southwest of the nucleus, on 2006 January 15–17, which is the ULX already reported by Isobe et al. (2008). Moreover, two X-ray sources are found to the northeast of the nucleus at  $(\alpha, \delta) (\text{J2000.0}) = (13^{\text{h}}05^{\text{m}}32^{\text{s}}.9, -49^\circ27'34'')$  and further to the northeast at  $(\alpha, \delta) (\text{J2000.0}) = (13^{\text{h}}05^{\text{m}}38^{\text{s}}.9, -49^\circ25'45'')$ , both of which were also reported as point sources (Kaaret & Alonso-Herrero 2008). In all the four observations in 2010, we find another X-ray source at  $(\alpha, \delta) (\text{J2000.0}) = (13^{\text{h}}05^{\text{m}}17^{\text{s}}.0, -49^\circ30'15'')$ , to the southwest of the nucleus. As the source is not detected in the other observations, it is an X-ray transient by definition. To our knowledge, this transient has never been reported, including the paper on the X-ray spectral change of the NGC 4945 nucleus by Marinucci et al. (2012), and thus it is our discovery. Hereafter, we name the new X-ray transient as Suzaku J1305–4930. The Chandra and XMM-Newton satellites observed NGC 4945 seven and two times, respectively. However, Suzaku J1305–4930 was not detected in any of those observations.

The source events of Suzaku J1305–4930 are accumulated from the  $1/3$ -radius circle region centered at  $(\alpha, \delta) (\text{J2000.0}) = (13^{\text{h}}05^{\text{m}}17^{\text{s}}.0, -49^\circ30'15'')$ , which is hereafter referred to as the “SOURCE” region (blue circle in figure 1). This “SOURCE” region inevitably suffers from contamination from the bright AGN core. We define another region named the “AGN” region centered at the position of the AGN, the events from which are used to estimate the contaminated component. It is the  $1/5$ -radius circle centered at  $(\alpha, \delta) (\text{J2000.0}) = (13^{\text{h}}05^{\text{m}}27^{\text{s}}.5, -49^\circ28'06'')$  excluding the  $0/5$ -radius circle centered at  $(\alpha, \delta) (\text{J2000.0}) = (13^{\text{h}}05^{\text{m}}33^{\text{s}}.0, -49^\circ27'34'')$  to the northeast of the AGN,



**Fig. 1.** Suzaku XIS0 images of NGC 4945 in the seven observations (table 1). The energy range is 0.2–12 keV. The gray circle in the 2006 1st image indicates the position of Suzaku J1305–4931 (Isobe et al. 2007). The other circles show the regions from which the spectra are extracted; the AGN-region spectrum in each observation is extracted from the white circular region excluding the smaller white circle in each panel and the SOURCE-region spectrum is from the blue circle. (Color online)



where another fainter source is visible in some observations (figure 1).

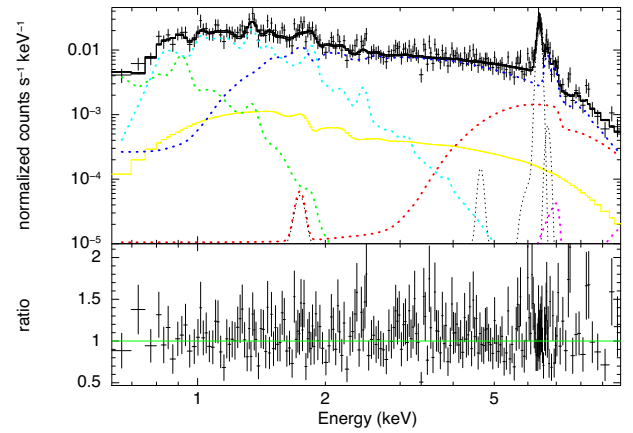
The non X-ray backgrounds (NXB) in the SOURCE and AGN regions are estimated by using `xisnxbgen` (Tawa et al. 2008) in HEASOFT in `heasoft-6.25` and are subtracted from the source spectra.<sup>1</sup> The cosmic X-ray background (CXB) is taken into account as an XSPEC model of a power law modified by an exponential cut-off (`powerlaw*highcut` in XSPEC; Boldt 1987) and is incorporated in the models employed in the subsequent analyses. We sum up events from XIS 0 and 3 (and XIS 2 if present) and use them as the FI events. We generated redistribution matrix files (`rmf`) and auxiliary response files (`arf`), using `xisrmfgen` and `xissimarfgen` (Ishisaki et al. 2007), respectively.

For each spectrum extracted from the SOURCE region, we use three types of `arf` files: one in which a point source at the position of Suzaku J1305–4930 is assumed, another in which a point source at the AGN position is assumed, and the other in which uniform emission is assumed to emulate the CXB. As for the AGN region, we ignore the contamination from the SOURCE region, given that the apparent brightness of the AGN region is much fainter than that of the SOURCE region, and use two types of `arf` files, where the assumptions are the same as in the latter two of the above-mentioned three `arf` files. We thus use five `arf` files in total.

### 3 Data analysis and results

#### 3.1 AGN-region spectra

The emission from the central AGN may significantly contaminate the SOURCE region, given its brightness and proximity compared with the size of the point-spread function of the X-ray telescopes (XRTs; Serlemitsos et al. 2007). To evaluate the degree and effect of the contamination, we first examine the spectrum extracted from the AGN region in 2011, the 2011 AGN spectrum, where the new transient source was not detected and hence the contamination of its emission to the AGN spectrum is negligible. The spectrum is binned into energy intervals so that each bin contains a minimum of 20 counts as shown in figure 2. It clearly shows a 0.5–10 keV broadband continuum, Fe-K emission lines in 6.4–7 keV, and multiple emission lines in the 0.5–2 keV band. The soft X-ray continuum of NGC 4945 is most likely to originate in hot plasma located at outer regions of the AGN and the host galaxy (e.g., Schurch et al. 2002). We fit the spectrum with model based on one of the models employed in Schurch, Roberts, and Warwick (2002) which consists of a heavily absorbed



**Fig. 2.** 2011 1st AGN-region spectrum. Green, cyan, and blue dotted lines represent thermal plasma model (`apec`) with different temperatures; the dotted red line shows a `pexrav` model, and the magenta dotted line shows a heavily absorbed power-law model. The solid yellow line shows the CXB model (section 2). The black dotted lines are three Gaussian lines. (Color online)

intrinsic power-law continuum, a Compton reflection continuum, three soft thermal continua, and three fluorescence lines of 6.40 keV Fe  $K\alpha$ , 7.06 keV Fe  $K\beta$ , and 7.47 keV Ni  $K\alpha$ . We replace the components `mekal` and `wabs` used in Schurch, Roberts, and Warwick (2002) with `apec` and `tbabs` in our modeling. We also include the galactic absorption component `tbabs` with the column density fixed at  $N_H = 1.38 \times 10^{21} \text{ cm}^{-2}$ , the value of which is estimated with the `nh` command in `heasoft`. In summary, the model to fit the 2011 1st AGN spectrum is described in the terminology of XSPEC as `tbabs*(tbabs*powerlaw + tbabs*pexrav + tbabs*apec*3 + zgauss*3)` plus the CXB model described in the previous section.

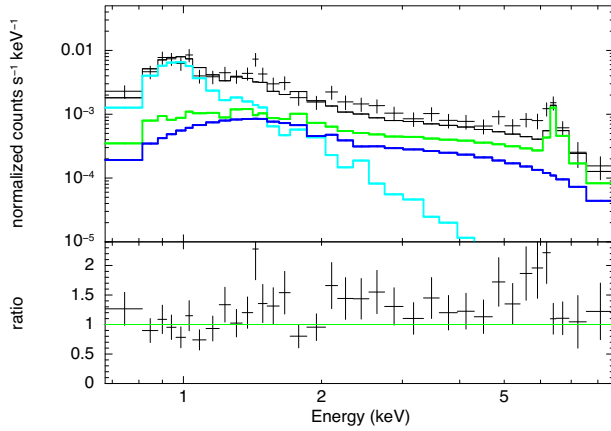
In the model fitting, the photon index  $\Gamma$  and absorbed column for the heavily-absorbed intrinsic power-law component are fixed at 1.55 and  $4.0 \times 10^{24} \text{ cm}^{-2}$  (Guainazzi et al. 2000), respectively. For the `pexrav` component, the metal abundance is fixed to be the solar value, and the cut-off energy is fixed at 200 keV. The inclination of the reflector is set to  $60^\circ$  and the reflection scaling factor is fixed at 0.003 (Itoh et al. 2008).

This model is found to reproduce the AGN spectrum successfully. Table 2 lists the best-fitting parameters.

#### 3.2 SOURCE-region spectra

We analyze the 2011 1st SOURCE spectrum (figure 3), for which Suzaku J1305–4930 is not detected significantly. If no intrinsic emission exists in the SOURCE region, the 2011 SOURCE spectrum should be reproduced only with the contamination from the AGN and the CXB. We apply a model to the spectrum to examine the hypothesis, assuming

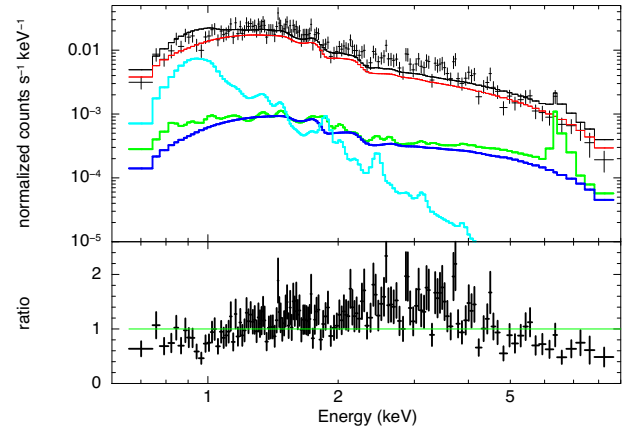
<sup>1</sup> See (<https://heasarc.gsfc.nasa.gov/heasoft/>).



**Fig. 3.** 2010 1st SOURCE-region spectrum. Green line: Contamination from the AGN region. Blue line: CXB. Cyan line: Additional thermal plasma (apec) model intrinsic to the emission from this region. (Color online)

the same emission model for the AGN that reproduces the 2011 AGN spectrum summarized in table 2.

We find that a hard X-ray emission above  $\sim 4$  keV is primarily explained by the contamination from the AGN, while there remains an excess in the soft X-ray band at  $\sim 1$  keV, resulting in an unacceptably large  $\chi^2/\text{d.o.f.} = 54.96/36$ . Then, we add a component of thermal emission (apec model in XSPEC) with a metal abundance fixed at the solar value. As a result, the fit is improved with  $\chi^2/\text{d.o.f.} = 42.8/34$ . However, the fit result is not yet satisfactory and the spectrum above  $\sim 4$  keV shows a slight systematic excess to the model. We suspect that this potentially originates from the imperfect arf models due to calibration uncertainty and/or attitude parameters. We thus introduce a multiplicative constant factor as a free parameter to express the effect, while all the other model parameters



**Fig. 4.** Power-law model fit to the 2010 1st SOURCE-region spectrum. The red solid line represents the power-law model for the transient source. Cyan, green, and blue solid lines represent the thermal plasma component intrinsic to the SOURCE-region spectrum, contamination from the AGN region, and the CXB, respectively. (Color online)

are fixed to the best-fitting parameters already obtained, and refit the spectrum. Consequently, the fit is further significantly improved with  $\chi^2/\text{d.o.f.} = 31.49/33$ . Figure 3 shows the resultant best-fitting model overlaid on the data and residuals. The electron temperature of the additional hot plasma and the multiplicative constant are determined to be  $0.88 \pm 0.07$  keV and  $1.47 \pm 0.11$ , respectively. Hereafter, we employ this model to reproduce the baseline of the SOURCE spectra (in any epoch).

We then analyze the SOURCE spectra in 2010, in which Suzaku J1305–4930 was significantly detected. Figure 4 shows the NXB-subtracted 2010 1st SOURCE spectrum. An excess emission is clearly identified in the whole 0.5–10 keV band. The emission is apparently dominated by that from Suzaku J1305–4930.

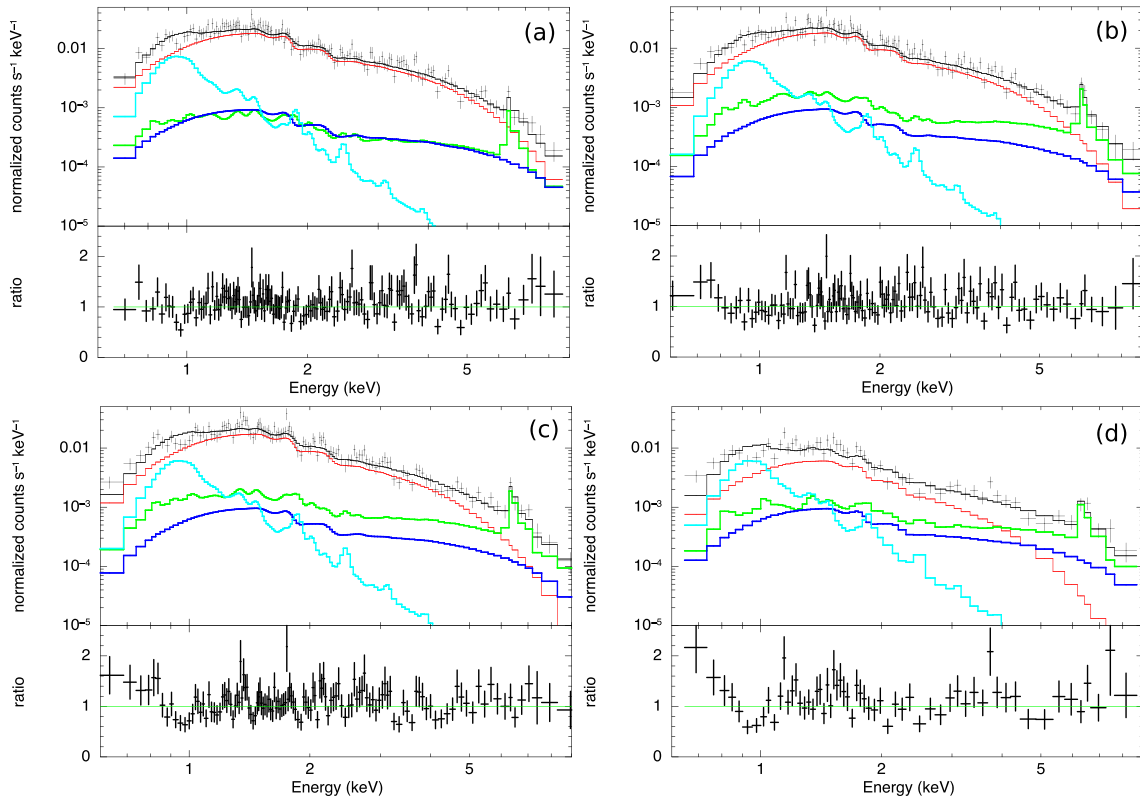
We first apply a power-law model modified by the galactic absorption tbabs with  $N_{\text{H}} = 1.38 \times 10^{21} \text{ cm}^{-2}$  to the spectra. Figure 4 shows the fitting result with the 2010 1st SOURCE spectrum as an example. The fits are found to be unacceptable; for example, the model gives  $\chi^2/\text{d.o.f.} = 313.9/145$  with the best-fitting photon index of  $\sim 2.04$  for the 2010 1st SOURCE spectrum. The residuals show that the spectrum prefers a more concave continuum model than that of a power law.

We then apply a modified model, replacing the power law by the multi-color disk blackbody (MCD) model (diskbb in XSPEC; Mitsuda et al. 1984) to the spectra in the epochs where the source was significantly detected, i.e., 2010 1st to 4th. We find that the MCD model gives acceptable fits ( $\chi^2/\text{d.o.f.} = 147.6/148$  for the 2010 1st SOURCE, for example), unlike the above-mentioned power-law model. The best-fitting parameters for the 2010 1st SOURCE, for example, are  $kT_{\text{in}} = 1.12 \pm 0.04$  keV

**Table 2.** Best-fitting parameters for the AGN-region spectra.

Parameters*	2010 1st	2010 2nd	2010 3rd	2010 4th
$N_{\text{H, power-law}}$ ( $10^{22} \text{ cm}^{-2}$ )	$13^{+6}_{-4}$	$9 \pm 3$	$7.8^{+0.2}_{-0.6}$	$18.2^{+0.4}_{-0.6}$
$N_{\text{H,1}}$ ( $10^{22} \text{ cm}^{-2}$ ) <sup>(a)</sup>	$<0.2$	$0.4^{+0.3}_{-0.3}$	$<0.5$	$0.5^{+0.2}_{-0.3}$
$kT_1$ (keV) <sup>(a)</sup>	$0.34^{+0.13}_{-0.04}$	$0.22^{+0.06}_{-0.04}$	$0.3 \pm 0.1$	$0.35^{+0.09}_{-0.19}$
$N_{\text{H,2}}$ ( $10^{22} \text{ cm}^{-2}$ ) <sup>(b)</sup>	$0.9^{+0.2}_{-0.2}$	$1.7^{+2.0}_{-0.7}$	$1.1^{+1.6}_{-0.9}$	$<15.7$
$kT_2$ (keV) <sup>(b)</sup>	$0.8^{+0.1}_{-0.1}$	$0.7^{+0.3}_{-0.3}$	$0.9^{+0.2}_{-0.2}$	$1.1^{+1.7}_{-0.7}$
$N_{\text{H,3}}$ ( $10^{22} \text{ cm}^{-2}$ ) <sup>(c)</sup>	$0.9^{+0.4}_{-0.3}$	$0.3^{+0.4}_{-0.2}$	$<8.4$	$1.3^{+2.0}_{-0.9}$
$kT_3$ (keV) <sup>(c)</sup>	$4.1^{+1.3}_{-1.0}$	$5.4^{+1.0}_{-1.7}$	$6.9^{+4.7}_{-0.5}$	$5.2^{+0.2}_{-0.2}$
$\chi^2/\text{d.o.f.}$	192.4/213	201.7/185	217.6/191	173.9/175

\*The three apec parameters shown with green, cyan, and blue in figure 2 are labeled with (a), (b), and (c), respectively.



**Fig. 5.** MCD model fits to the SOURCE region spectra: (a) 2010 1st, (b) 2010 2nd, (c) 2010 3rd, and (d) 2010 4th. Red solid lines represent the MCD model for the transient. Cyan, green, and blue solid lines are the same as those in figure 4. (Color online)

**Table 3.** Best-fitting spectral parameters with the MCD model.

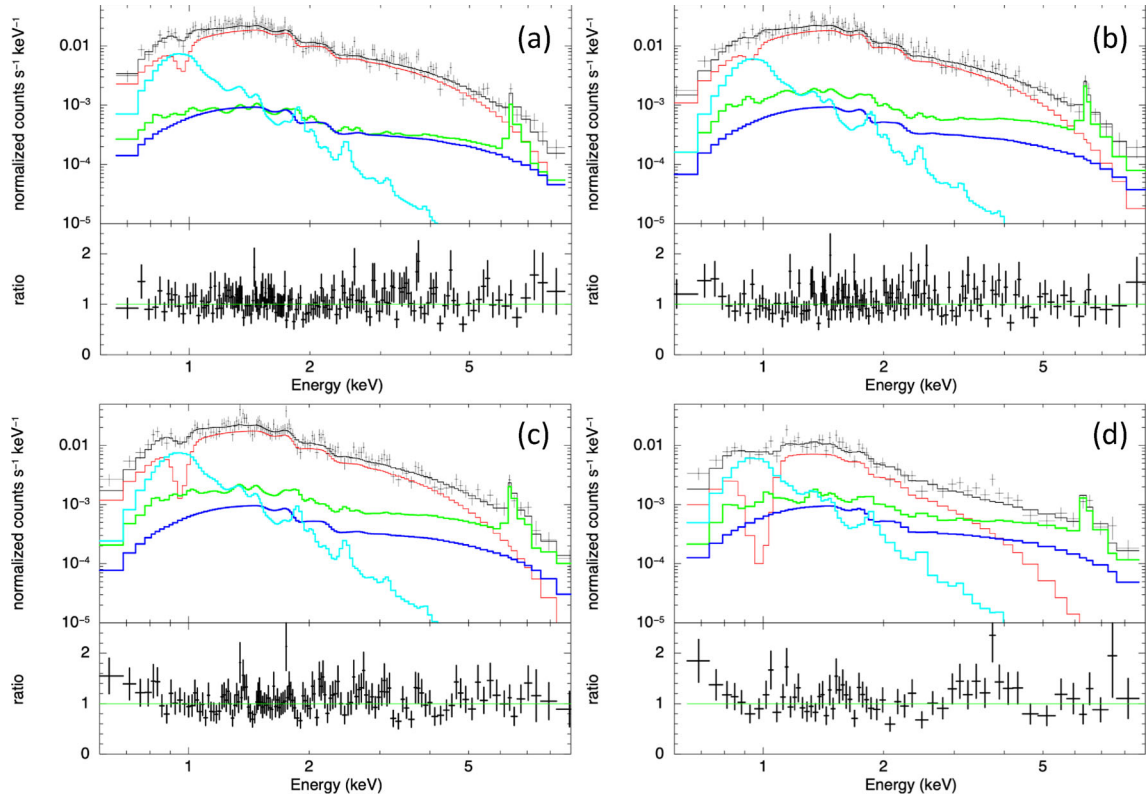
Parameters	2005 1st	2006 1st	2010 1st	2010 2nd	2010 3rd	2010 4th	2011 1st
$kT_{\text{in}}$ (keV)	—	—	$1.15^{+0.07}_{-0.06}$	$1.01 \pm 0.06$	$0.97 \pm 0.06$	$0.80^{+0.13}_{-0.11}$	—
$R_{\text{in}}$ (km)	—	—	$64^{+14}_{-11}$	$80^{+20}_{-16}$	$83^{+22}_{-17}$	$69^{+55}_{-30}$	—
Constant	—	—	$0.8 \pm 0.5$	$1.7 \pm 0.5$	$1.4 \pm 0.4$	$1.0 \pm 0.3$	—
Flux ( $10^{-13}$ erg s $^{-1}$ cm $^{-2}$ )	$<0.9$	$<2.1$	$5.4 \pm 0.1$	$4.8 \pm 0.1$	$4.4 \pm 0.1$	$1.3 \pm 0.1$	$<0.4$
$L_{\text{x}}$ ( $10^{38}$ erg s $^{-1}$ )	$<1.8$	$<4.8$	$8.9^{+0.5}_{-0.5}$	$7.9^{+0.4}_{-0.7}$	$7.3^{+0.5}_{-0.7}$	$2.2^{+0.3}_{-0.8}$	$<2.4$
$L_{\text{disk}}$ ( $10^{38}$ erg s $^{-1}$ )	—	—	9.4	8.4	7.7	2.4	—
$\chi^2/\text{d.o.f.}$	—	—	147.6/148	135.1/129	148.0/128	95.0/58	—

and  $R_{\text{in}} = 64^{+10}_{-9} \alpha$  km for  $\alpha^{1/2} = \cos 60^\circ / \cos i$ , where  $i$  is the inclination of the accretion disk from the line of sight. Figure 5 and table 3 show the result of the fitting.

Systematic residuals, positive below 0.9 keV and negative around 1 keV, still remain in the spectra (figure 5), in particular in the 2010 3rd and 2010 4th spectra. We test two separate additional models: a multiplicative absorption edge model (*edge* in XSPEC) and an absorption Gaussian-line model (*gabs* in XSPEC), expecting that either or both of them may be more appropriate. Consequently, the fit is significantly improved with the *gabs* model as summarized in figure 6 and table 4, but not much with the *edge* model.

Various absorption lines of highly ionized ions of Ne, Mg, Ne, and Fe are observed in the energy band around 1 keV in the X-ray spectra of Cyg X-1 observed with

the Chandra High Energy Transmission Grating (HETG) (Hanke et al. 2009; Nowak et al. 2011; Miškovíková et al. 2016). The absorption lines are different in different orbital phases and interpreted as absorption in the stellar wind. Although the equivalent width of each line is several eV or less, more than 10 lines can contribute an absorption feature observed with CCD resolution. Therefore, the equivalent widths of the absorption features in the spectra of Suzaku J1305–4930 are compatible with those observed in Cyg X-1. We also note that some positive residuals remain below 0.9 keV in the spectra, which vary with time. Interestingly, in two ULXs, NGC 1313 X-1 and NGC 5408 X-1, soft X-ray emission and absorption lines of highly ionized ions, some with significant blue shift, are observed (Pinto et al. 2016). They are interpreted as outflows of the source.



**Fig. 6.** SOURCE-region spectra fitted with the `gabs*diskbb` model: (a) 2010 1st, (b) 2010 2nd, (c) 2010 3rd, and (d) 2010 4th. The coloring of the model components is the same as in figure 5, except for the fact that the models here include a Gaussian absorption model. (Color online)

**Table 4.** Best-fitting parameters with the `gabs*diskbb` model.

Parameters	2010 1st	2010 2nd	2010 3rd	2010 4th
Constant	$1.0 \pm 0.5$	$1.9 \pm 0.5$	$1.6 \pm 0.4$	$1.2 \pm 0.3$
Line $E$ (keV)	$0.96 \pm 0.02$	$0.94^{+0.04}_{-0.03}$	$0.96^{+0.03}_{-0.02}$	$0.98 \pm 0.03$
Sigma (keV)	$0.005^{+0.035}_{-0.002}$	$0.007^{+0.056}_{-0.003}$	$0.009^{+0.372}_{-0.004}$	$0.018^{+0.052}_{-0.006}$
Equivalent width (eV)	$9^{+98}_{-6}$	$11^{+84}_{-5}$	$39^{+1608}_{-17}$	$95^{+276}_{-32}$
$kT_{\text{in}}$ (keV)	$1.12^{+0.07}_{-0.06}$	$0.9 \pm 0.1$	$0.93 \pm 0.06$	$0.6^{+0.1}_{-0.2}$
$R_{\text{in}}$ (km)	$68^{+15}_{-13}$	$82^{+21}_{-17}$	$89^{+26}_{-20}$	$116^{+168}_{-62}$
$\chi^2/\text{d.o.f.}$	130.8/145	130.1/127	128.0/125	71.2/55

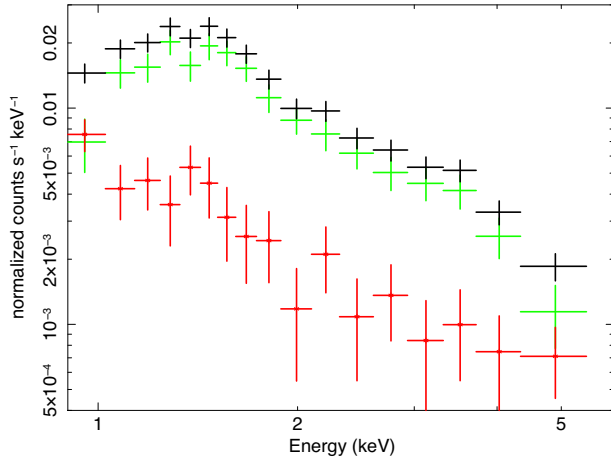
Observations with a higher energy resolution are necessary to investigate this, as well as the origin of the absorption features.

Another popular model for this type of hard X-ray transients is a  $p$ -free disk model (`diskpbb` in `XSPEC`). We apply it to the spectra instead of the MCD model and find that  $p$  is consistent with the nominal value of 0.75, although errors are large. Also, we examine an additional power-law component with a fixed photon index of 2 and find it to be unnecessary.

### 3.3 On-off difference spectra of Suzaku J1305–4930

We perform spectral analyses with the difference spectra of the SOURCE region; the 2011 1st data (off-source), where the transient source is not visible, are subtracted from the on-source data of the 2010 1st, 2010 2nd, 2010 3rd, and 2010 4th. Providing that there is no variability in any other X-ray sources in the field of view, including the AGN, these difference spectra should be those of Suzaku J1305–4930 only. Note that the NXB spectrum in each observation is subtracted using `mathpha` in `heasoft`. Figure 7 shows the difference spectrum of the 2010 1st minus 2011 1st, as an example, along with the on-source and off-source spectra. The spectra were binned into energy intervals with a minimum of 40 events per bin.

Table 5 shows the best-fitting parameters from fitting of the difference spectra with the MCD model. The obtained parameters are consistent with those in table 4 in subsection 3.2, although errors are larger with the difference spectra. This supports the validity of our analysis described in subsection 3.2. Hence, we will primarily focus on our results obtained in subsection 3.2 in the following discussion.



**Fig. 7.** Difference spectrum (green), generated by subtracting the 2011 1st spectrum (red) from the 2010 1st spectrum (black). (Color online)

**Table 5.** Best-fitting parameters with the MCD model applied to the difference spectra.

Parameters	2010 1st	2010 2nd	2010 3rd	2010 4th
$kT_{\text{in}}$ (keV)	$1.1^{+0.1}_{-0.1}$	$1.0^{+0.1}_{-0.1}$	$1.0^{+0.1}_{-0.1}$	$0.7^{+0.2}_{-0.2}$
$R_{\text{in}}$ (km)	$71^{+34}_{-23}$	$78^{+44}_{-30}$	$86^{+46}_{-31}$	$84^{+188}_{-75}$
$L_x$ ( $10^{38}$ erg s $^{-1}$ )	$8.5^{+0.6}_{-1.7}$	$8.2^{+0.7}_{-2.2}$	$7.5^{+0.5}_{-1.3}$	$2.2^{+0.2}_{-2.2}$
$\chi^2/\text{d.o.f.}$	8.8/15	7.1/12	8.8/12	14.9/25

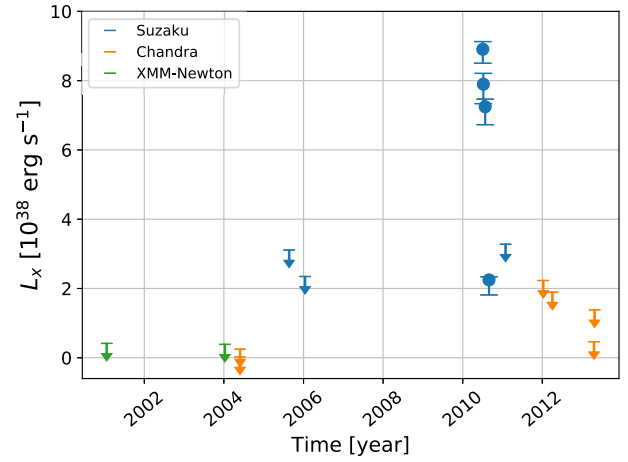
### 3.4 X-ray light curve

We apply the same analysis procedure in subsection 3.2, employing the MCD model, to the data of the 2005 1st, 2006 1st, and 2011 1st, and obtain the upper limits of  $L_x$ . We also analyze the Chandra data of OBSIDs 846, 4899, 4900, 13791, 14412, 14984, and 14985, and the XMM-Newton data of OBSIDs 0112310301 and 0204870101, to derive the  $L_x$  upper limits. The results are summarized in figure 8, showing the long-term light curve of Suzaku J1305–4930 in the 0.3–10 keV band.

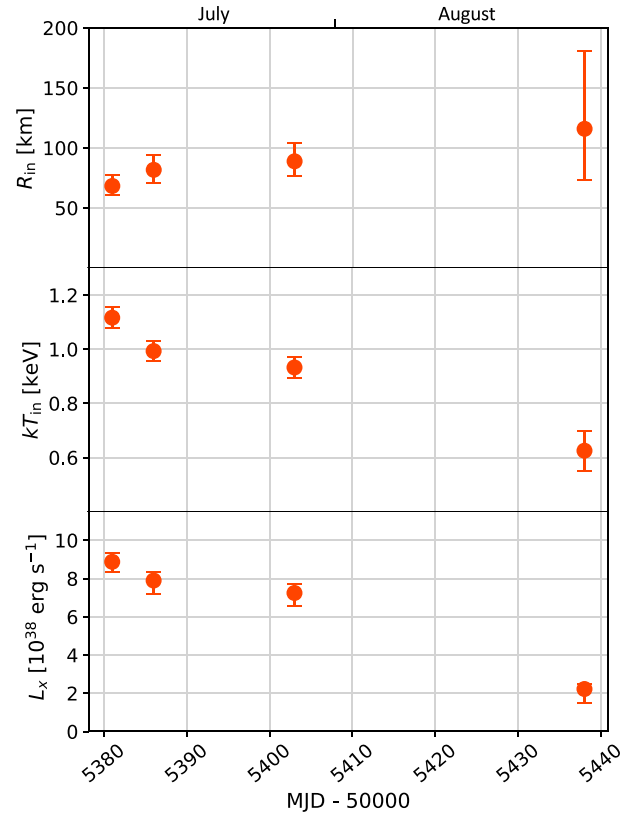
## 4 Discussion

### 4.1 Estimation of the black hole mass

The highest observed X-ray luminosity  $L_x$  of Suzaku J1305–4930 is  $(8.9^{+0.2}_{-0.4}) \times 10^{38}$  erg s $^{-1}$  (0.3–10 keV) for the assumed distance of 3.72 Mpc. Providing that this is the Eddington luminosity, the mass of Suzaku J1305–4930 is estimated to be  $7 M_\odot$ . Alternatively, the innermost disk radius of  $R_{\text{in}} = 68^{+9}_{-8} \alpha^{1/2}$  km provides an estimate of the mass of  $\sim 8 \times (\alpha/1.0)^{1/2} M_\odot$ , providing that  $R_{\text{in}}$  is equal to the last stable orbit of the standard accretion disk around a Schwarzschild black hole, i.e.,  $R_{\text{in}} = 3 R_s$ , where  $R_s$  is the Schwarzschild radius. The value of the mass estimated in either way suggests that this



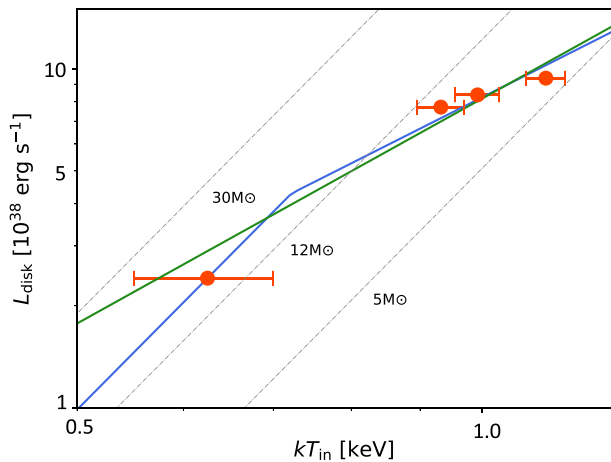
**Fig. 8.** Long-term light curve of the transient source Suzaku J1305–4930 in the SOURCE region. The observations with Chandra and XMM-Newton provide upper limits of the luminosity only. (Color online)



**Fig. 9.** Top:  $R_{\text{in}}$  with the assumed inclination angle of  $60^\circ$ . Middle:  $kT_{\text{in}}$ . Bottom:  $L_x$  (0.3–10 keV) for the assumed distance of 3.72 Mpc. (Color online)

source is a stellar-mass black hole binary. Figure 9 shows that  $kT_{\text{in}}$  decreased from  $1.12 \pm 0.04$  keV at the 2010 1st to  $0.63 \pm 0.07$  keV at the 2010 4th in about 60 days. In the same period, its  $L_x$  decreased along with  $T_{\text{in}}$ , while  $R_{\text{in}}$  did not significantly change from  $\sim 75$  km. These properties are very similar to those observed in Galactic black hole binaries (e.g., Done et al. 2007).





**Fig. 10.** Relation between  $L_{\text{disk}}$  and  $kT_{\text{in}}$ . The gray lines show  $L_{\text{disk}} \propto T_{\text{in}}^4$  for some example black hole masses. The green solid line shows a single power-law model with an index of 2.2, and the blue solid line shows a broken power-law model with (fixed) indices of 2 and 4. (Color online)

In reality, the inner edge of the disk is not identical to  $R_{\text{in}}$  of the MCD model and depends on the black hole spin parameter and inner boundary conditions. However, the data statistics of our data are too limited, and various parameters are various parameters degenerate each other to be constrained from spectral fitting. We thus employ the model of the general relativistic accretion disk around a Kerr black hole (`kerrbb` in XSPEC; Li et al. 2005), fixing the spin parameter at 0, the disk inclination at  $60^\circ$ , the distance at 3.72 Mpc, and other detailed accretion disk parameters at their default values [e.g., the spectral hardening factor ( $T_{\text{col}}/T_{\text{eff}} = 1.7$ )] to fit the spectra. We obtain a black hole mass of  $6.4\text{--}7.9 M_\odot$  with this model. This value is consistent with that evaluated with `diskbb` model.

#### 4.2 $L_{\text{disk}}$ vs $T_{\text{in}}$ diagram

If Suzaku J1305-4930 is a stellar-mass black-hole binary in NGC 4945, it means that we have serendipitously obtained multiple observations, with relatively short intervals in between, of a source of this class outside our Galaxy. Figure 10 shows the  $L_{\text{disk}}$  vs  $T_{\text{in}}$  diagram of Suzaku J1305-4930 for the four observations. The relation of  $L_{\text{disk}} \propto T_{\text{in}}^4$  is expected for a standard accretion disk (Shakura & Sunyaev 1973) with a time-invariable inner radius of the disk. However, the  $L_{\text{disk}}$  vs  $T_{\text{in}}$  relation is fitted with a single power-law model with the best-fitting index of  $2.2 \pm 0.5$ , which does not support the expected value of 4, with  $\chi^2/\text{d.o.f.} = 3.7/2$ . The observed index is rather consistent with 2, which is expected for a slim-disk model. Indeed, Watarai, Fukue, and Mineshige (2000) simulated many slim-disk spectra, fitted them with a MCD model,

and derived the empirical relation  $R_{\text{in}} \propto T_{\text{in}}^{-1}$  ( $L_{\text{disk}} \propto T_{\text{in}}^2$ ). We thus interpret that Suzaku J1305-4930 was not in the standard-disk state but in the slim-disk state during the four observations in 2010.

We apply another model to the  $L_{\text{disk}}$  vs  $T_{\text{in}}$  relation of Suzaku J1305-4930: a broken power-law model with fixed indices of 4 and 2 at the lower- and higher-temperature sides, respectively. Figure 10 shows the best-fitting result, which gives  $\chi^2/\text{d.o.f.} = 2.7/2$ . The break point is determined to be  $kT_{\text{in}} = 0.7 \pm 0.2$  keV, which can be translated into a luminosity of  $(4.3 \pm 2.4) \times 10^{38} \text{ erg s}^{-1}$ . Thus, the 2010 1st, 2010 2nd, and 2010 3rd is in the slim-disk state, and the 2010 4th is in the standard-disk state.

Kubota and Makishima (2004) and Kubota, Makishima, and Ebisawa (2001) reported state transitions in the Galactic black hole binaries XTE J1550-564 and GRO J1655-40, respectively. Their  $L_{\text{disk}}$  vs  $T_{\text{in}}$  diagrams exhibit clear state transitions from the standard-disk state ( $L_{\text{disk}} \propto T_{\text{in}}^4$ ) to the slim-disk state ( $L_{\text{disk}} \propto T_{\text{in}}^2$ ). Our results on Suzaku J1305-4930 may alternatively be interpreted with a similar state transition.

## 5 Summary

We discover an X-ray transient, named Suzaku J1305-4930, about 3 kpc away from the nucleus of NGC 4945. Among the seven Suzaku observations of this region, the source was detected in four observations from 2010 July to 2010 August. The highest observed 0.3–10 keV X-ray luminosity  $L_x$  is  $(8.9^{+0.2}_{-0.4}) \times 10^{38} \text{ erg s}^{-1}$ . The X-ray spectra are well reproduced with a MCD model. The parameters  $L_x$  and  $R_{\text{in}}$  consistently suggest that this source is a stellar-mass black hole binary with a mass of  $\sim 10 M_\odot$ . The  $L_{\text{disk}}$  vs  $T_{\text{in}}$  relation is, however, not reproduced with the standard  $L_{\text{disk}} \propto T_{\text{in}}^4$  relation; a flatter relation ( $L_{\text{disk}} \propto T_{\text{in}}^{2.2 \pm 0.5}$ ) or power-law relation with a break is suggested.

## Acknowledgment

We appreciate helpful comments from the anonymous referee, Naoki Isobe, and Aya Kubota. This research has made use of data obtained from the Suzaku satellite, a collaborative mission between the space agencies of Japan (JAXA) and the USA (NASA). This research made use of data obtained from Data Archives and Transmission System (DARTS), provided by Center for Science-satellite Operation and Data Archive (C-SODA) at ISAS/JAXA.

KH is supported by Japan Society for the Promotion of Science (JSPS) KAKENHI Grant Numbers JP 16H00949, 16K13787, 18K18767, 19H00696, 19H01908, 23340071, 26109506, and also by the Mitsubishi Foundation Research Grants in the Natural Sciences 201910033. HN is supported by JSPS KAKENHI Grant Numbers 19K21884, and TY by 18J20523.

## References

- Boldt, E. 1987, in IAU Symp. 124, *Observational Cosmology*, ed. A. Hewitt et al. (Dordrecht: D. Reidel Publishing Co.), 611
- Boldt, E., & Leiter, D. 1987, *ApJ*, 322, L1
- Done, C., Gierliński, M., & Kubota, A. 2007, *A&AR*, 15, 1
- Done, C., Madejski, G. M., Życki, P. T., & Greenhill, L. J. 2003, *ApJ*, 588, 763
- Feng, H., & Kaaret, P. 2005, *ApJ*, 633, 1052
- Greenhill, L. J., Moran, J. M., & Herrnstein, J. R. 1997, *ApJ*, 481, L23
- Guainazzi, M., Matt, G., Brandt, W. N., Antonelli, L. A., Barr, P., & Bassani, L. 2000, *A&A*, 356, 463
- Hanke, M., Wilms, J., Nowak, M. A., Pottschmidt, K., Schulz, N. S., & Lee, J. C. 2009, *ApJ*, 690, 330
- Ishisaki, Y., et al. 2007, *PASJ*, 59, S113
- Isobe, N., Kubota, A., Makishima, K., Gandhi, P., Griffiths, R. E., Dewangan, G. C., Itoh, T., & Mizuno, T. 2008, *PASJ*, 60, S241
- Itoh, T., et al. 2008, *PASJ*, 60, S251
- Jithesh, V., Misra, R., & Wang, Z. 2017, *ApJ*, 849, 121
- Kaaret, P., & Alonso-Herrero, A. 2008, *ApJ*, 682, 1020
- Kokubun, M., et al. 2007, *PASJ*, 59, S53
- Koyama, K., et al. 2007, *PASJ*, 59, S23
- Kubota, A., & Makishima, K. 2004, *ApJ*, 601, 428
- Kubota, A., Makishima, K., & Ebisawa, K. 2001, *ApJ*, 560, L147
- Li, L.-X., Zimmerman, E. R., Narayan, R., & McClintock, J. E. 2005, *ApJS*, 157, 335
- Marinucci, A., Risaliti, G., Wang, J., Nardini, E., Elvis, M., Fabbiano, G., Bianchi, S., & Matt, G. 2012, *MNRAS*, 423, L6
- Miškovičová, I., et al. 2016, *A&A*, 590, A114
- Mitsuda, K., et al. 1984, *PASJ*, 36, 741
- Nowak, M. A., et al. 2011, *ApJ*, 728, 13
- Ott, M., Whiteoak, J. B., Henkel, C., & Wielebinski, R. 2001, *A&A*, 372, 463
- Pinto, C., Middleton, M. J., & Fabian, A. C. 2016, *Nature*, 533, 64
- Schurch, N. J., Roberts, T. P., & Warwick, R. S. 2002, *MNRAS*, 335, 241
- Serlemitsos, P. J., et al. 2007, *PASJ*, 59, S9
- Shakura, N. I., & Sunyaev, R. A. 1973, *A&A*, 24, 337
- Takahashi, T., et al. 2007, *PASJ*, 59, S35
- Tawa, N., et al. 2008, *PASJ*, 60, S11
- Tully, R. B., et al. 2013, *AJ*, 146, 86
- Watarai, K., Fukue, J., & Mineshige, S. 2000, *PASJ*, 52, 133
- Weng, S.-S., Zhang, S.-N., & Zhao, H.-H. 2014, *ApJ*, 780, 147