

Semantic impairment in stroke aphasia versus semantic dementia: a case-series comparison

Elizabeth Jefferies and Matthew A. Lambon Ralph

School of Psychological Sciences, University of Manchester, Manchester, UK

Correspondence to: Dr Elizabeth Jefferies, School of Psychological Sciences, Zochonis Building, University of Manchester, Oxford Road, Manchester, M13 9PL, UK

E-mail: beth.jefferies@manchester.ac.uk

Different neuropsychological populations implicate diverse cortical regions in semantic memory: semantic dementia (SD) is characterized by atrophy of the anterior temporal lobes whilst poor comprehension in stroke aphasia is associated with prefrontal or temporal–parietal infarcts. This study employed a case-series design to compare SD and comprehension-impaired stroke aphasic patients directly on the same battery of semantic tests. Although the two groups obtained broadly equivalent scores, they showed qualitatively different semantic deficits. The SD group showed strong correlations between different semantic tasks—regardless of input/output modality—and substantial consistency when a set of items was assessed several times. They were also highly sensitive to frequency/familiarity and made coordinate and superordinate semantic errors in picture naming. These findings support the notion that amodal semantic representations degrade in SD. The stroke aphasia group also showed multimodal deficits and consistency across different input modalities, but inconsistent performance on tasks requiring different types of semantic processing. They were insensitive to familiarity/frequency—instead, tests of semantic association were influenced by the ease with which relevant semantic relationships could be identified and distractors rejected. In addition, the aphasic patients made associative semantic errors in picture naming that SD patients did not make. The aphasic patients' picture naming performance improved considerably with phonemic cues suggesting that these patients retained knowledge that could not be accessed without contextual support. We propose that semantic cognition is supported by two interacting principal components: (i) a set of amodal representations (which progressively degrade in SD) and (ii) executive processes that help to direct and control semantic activation in a task-appropriate fashion (which are dysfunctional in comprehension-impaired stroke aphasic patients).

Keywords: comprehension; non-verbal; semantic dementia; semantic memory; stroke aphasia

Abbreviations: CCT = camel and cactus test; CVA = cerebrovascular accident; PPT = pyramids and palm trees test; SD = semantic dementia; TSA = transcortical sensory aphasia

Received February 6, 2006. Revised April 25, 2006. Accepted May 9, 2006. Advance Access publication June 30, 2006

Introduction

Semantic memory allows us to comprehend a multitude of different stimuli, such as words, pictures, objects, environmental sounds and faces. It also allows us to express knowledge in a wide variety of domains, both verbal (e.g. naming and verbal definitions) and non-verbal (e.g. drawing and object use). Impairments of semantic memory are extremely debilitating and can occur in a range of disorders, including semantic dementia (SD) and stroke aphasia. Although both of these conditions provide insights into the neural organization of semantic memory, the two groups of patients tend to be studied by different researchers: they have almost never been directly compared using the same semantic tasks and

are typically discussed in separate literatures that highlight different brain regions as being critical for semantic memory.

Patients with SD have a highly specific impairment of semantic memory: they fail diverse semantic tasks even though other aspects of cognition and language, such as phonology, visual processing and decision-making remain intact (Snowden *et al.*, 1989; Hodges *et al.*, 1992). SD patients have highly circumscribed bilateral atrophy and hypometabolism of the inferior and lateral aspects of the anterior temporal lobes and the extent of this atrophy correlates with the severity of the semantic impairment (Mummery *et al.*, 2000; Nestor *et al.*, 2006). Patients with

this condition show poor comprehension of items presented in every modality, including spoken and written words, pictures, environmental sounds, smells and touch (Bozeat *et al.*, 2000; Coccia *et al.*, 2004; S Luzzi, JS Snowden, D Neary, M Coccia, L Provinciali, MA Lambon Ralph, submitted for publication). The marked semantic deficit is also apparent in production tasks, such as picture naming (Lambon Ralph *et al.*, 1998, 2001), verbal definitions (Lambon Ralph *et al.*, 1999), object drawing (Bozeat *et al.*, 2003) and object use (Bozeat *et al.*, 2002). In all of these tasks, performance on highly familiar items (e.g. horse) is better preserved than less frequently encountered stimuli (e.g. zebra; Funnell, 1995; Bozeat *et al.*, 2000).

SD patients show very high correlations between their scores on different semantic tasks and strong item-specific consistency across modalities, suggesting that the anterior temporal lobes underpin a single store of amodal semantic knowledge (Bozeat *et al.*, 2000; Rogers *et al.*, 2004). Another disease that produces bilateral anterior temporal lobe damage—herpes simplex encephalitis—also results in multimodal semantic deficits, consistent with this hypothesis (Kapur *et al.*, 1994; Wilson, 1997). The anterior temporal lobes are ideal for forming amodal semantic representations as they have extensive connections with cortical areas that represent modality-specific information (see also the theory of ‘convergence zones’; Damasio, 1989; Gloor, 1997; Damasio *et al.*, 2004). Accordingly, Rogers *et al.* (2004) implemented a computational model of this anterior temporal lobe system in which semantic representations were formed through the distillation of information required for mappings between different verbal and non-verbal modalities. When damaged, the model reproduced the behavioural performance of SD patients across a wide variety of semantically-demanding receptive and expressive tasks.

Comprehension impairments are also frequently observed in stroke aphasia typically alongside other language deficits; in particular, they occur in Wernicke’s aphasia, TSA and global aphasia. However, in contrast to SD patients, comprehension deficits in stroke aphasia are associated with damage to temporoparietal and prefrontal regions in the left hemisphere (e.g. Chertkow *et al.*, 1997; Berthier, 2001). The anterior temporal lobes, which receive two arterial supplies, are rarely damaged—and the likelihood of bilateral lesions following strokes in this area is extremely small. The SD and stroke aphasia literatures therefore draw conflicting conclusions about which cortical regions are critical for semantic memory.

Stroke patients with TSA are of particular interest because their aphasia profile is at least superficially similar to that observed in SD; indeed, within the aphasiology literature, SD is considered to be a variety of TSA (Berthier, 2000). TSA is defined as comprehension impairment in the context of fluent speech and good repetition (Albert *et al.*, 1981). TSA can result from temporoparietal or prefrontal infarcts: interestingly, these two groups show highly similar aphasia profiles suggesting that comprehension may be underpinned

by a widely distributed network of neural structures (Berthier, 2001). The behavioural similarity of stroke-induced TSA and SD is unclear, however, because stroke TSA and SD patients have not been systematically compared using the same semantic tasks. Studies of stroke induced TSA have focused on verbal comprehension (e.g. Berthier, 2001) and it is not known if these patients typically have a multimodal semantic deficit that resembles the pattern observed in SD.

There is a richer literature on non-verbal comprehension in stroke aphasia in general and Wernicke’s aphasia in particular. This has revealed that poor verbal comprehension can be accompanied by impairment on a variety of non-language semantic tasks. These include matching gestures to pictures (Gainotti and Lemmo, 1976), selecting the appropriate colour for objects (De Renzi *et al.*, 1972), drawing objects from memory (Gainotti *et al.*, 1983), sorting and classifying pictures (Kelter *et al.*, 1977; Whitehouse *et al.*, 1978), matching environmental sounds to pictures (Spinnler and Vignolo, 1966; Varney, 1980; Saygin *et al.*, 2003) and identifying semantic associations with pictured concepts (Kelter *et al.*, 1976; Gainotti *et al.*, 1979; Cohen *et al.*, 1980; Semenza *et al.*, 1980). Stroke aphasia can, therefore, lead to multimodal semantic deficits even though the anterior temporal lobes remain intact. Lesion overlap analyses have revealed that stroke aphasic patients who fail both verbal and pictorial semantic tasks have damage to left posterior temporal cortex and the adjacent area of inferior parietal cortex (Hart and Gordon, 1990; Chertkow *et al.*, 1997; Saygin *et al.*, 2003).

In summary, separate neuropsychological literatures (centred on SD, TSA and Wernicke’s aphasia) implicate a widely distributed set of brain areas in semantic cognition, including (i) anterior temporal cortex bilaterally (in SD), (ii) left posterior temporal/inferior parietal cortex (in TSA and Wernicke’s patients with multimodal semantic deficits) and (iii) left lateral prefrontal cortex (in TSA). Functional neuroimaging studies of normal participants performing semantic tasks point to a broadly similar neural network (as long as the findings of PET as well as fMRI studies are taken into account; Devlin *et al.*, 2000). Activation specific to semantic tasks has been reported in anterior inferior temporal cortex bilaterally and also in left temporal–parietal and inferior prefrontal cortex. These regions are active during semantic judgements for both words and pictures (Vandenberghe *et al.*, 1996; Perani *et al.*, 1999; Chee *et al.*, 2000; Postler *et al.*, 2003; Bright *et al.*, 2004). Within the auditory modality, passive listening produces activation along the left lateral temporal lobe which becomes more anterior as the intelligibility of speech stimuli is increased (Scott *et al.*, 2000; Crinion *et al.*, 2003). This paradigm can also reveal activation of temporal–parietal cortex during the processing of meaningful speech (Narain *et al.*, 2003). Within the area of damage observed in TSA patients with frontal lesions, one specific region—the left inferior prefrontal cortex (LIPC)—is thought to play a specific role in the controlled

processing of word/object meaning. This site reliably shows greater activation when semantic tasks that require high control/selection are contrasted with those that require less control (Demb *et al.*, 1995; Thompson-Schill *et al.*, 1997; Wagner *et al.*, 2001; Gold and Buckner, 2002). Similar regions are activated for semantic relative to phonological judgements (Poldrack *et al.*, 1999; Roskies *et al.*, 2001; Devlin *et al.*, 2003) and by decisions about the strength of semantic association with verbal and non-verbal stimuli (e.g. Vandenberghe *et al.*, 1996).

Neuropsychological studies that compare semantically impaired patients with lesions in each of these three regions will enable us to draw further conclusions about their specific roles in semantic processing. Although a few studies have compared verbal and non-verbal semantic tasks separately in SD and stroke aphasia, there have been almost no direct comparisons of these groups using the same semantic tasks. One exception was the study reported by Warrington and Cipolotti (1996), which examined six comprehension-impaired patients; four with SD, one with stroke aphasia following a frontal–parietal cerebrovascular accident (CVA), and one with a tumour in left posterior temporal cortex. Although overall performance on word–picture matching tasks was broadly equivalent for the SD and non-progressive cases, there were some important differences: (i) the SD patients were highly sensitive to word frequency whereas the non-progressive cases were not; (ii) the SD cases showed more consistent performance when the same items were probed several times; (iii) comprehension was affected by response–stimulus interval for the non-progressive but not the SD patients. These two patterns of impairment were characterized as degradation of a semantic ‘store’ (in the SD cases) and difficulty accessing semantic knowledge due to ‘refractoriness’ (in the non-progressive cases). Other single case studies support the view that semantic storage deficits follow damage to the anterior temporal lobes in SD (Warrington, 1975; Coughlan and Warrington, 1981) and herpes simplex encephalitis (Warrington and Shallice, 1984; Wilson, 1997). In contrast, the access/refractory pattern has been observed in a handful of stroke/tumour cases with temporal–parietal or frontal–parietal lesions (Warrington and McCarthy, 1983, 1987; Cipolotti and Warrington, 1995; Forde and Humphreys, 1995, 1997; Ferrand and Humphreys, 1996; Crutch and Warrington, 2003, 2004, 2005; Warrington and Crutch, 2004) (*see* Gotts and Plaut, 2002 for a recent review).

These studies suggest that there might be some important differences between the comprehension deficits accompanying SD and stroke aphasia. It is not clear, however, whether the ‘access’ patients discussed above are similar to stroke aphasic cases showing multimodal semantic deficits (e.g. the cases reported by Chertkow *et al.*, 1997) given that the emphasis in this work has been on refractory effects in verbal comprehension tasks. In addition, it is difficult to draw firm conclusions about potential differences from the current literature because it is dominated by single case

studies that employed different semantic tasks. The present investigation addressed these limitations by directly comparing 10 comprehension-impaired SD patients and 10 stroke aphasic cases on a common battery of both verbal and non-verbal semantic tests. This is, to our knowledge, the first such comparative study employing a case-series design. The semantic battery that we used probed the same concepts several times using different input modalities and included various types of semantic judgement. We examined the strength of three phenomena that have been argued to distinguish between ‘storage’ and ‘access’ deficits, namely frequency/familiarity effects, consistency between different semantic tests and the effect of cues on semantic retrieval. This allowed us to address the inconsistencies between the dementia and aphasiology literatures, and to elucidate the specific contributions of the different brain regions to semantic cognition. Our findings suggest that the anterior temporal lobes form a store of amodal semantic knowledge which is degraded in SD. In contrast, comprehension-impaired stroke aphasic patients with left inferior frontal and temporoparietal lesions have an impairment of the executive processes that direct and control semantic activation in a task-appropriate fashion.

Subjects and methods

Participants

This work was approved by the local health authority ethics committees and informed consent was obtained. Ten aphasic stroke patients were recruited from stroke clubs and speech and language therapy services in Manchester, UK. Patients with verbal comprehension deficits were initially screened and enrolled in the study if they failed both picture and word tests of semantic association (Camel and Cactus Test, described below). Every case had chronic impairment from a CVA at least a year previously. Five were TSA patients. The remainder had less fluent speech and/or poorer repetition (*see* Table 1 for biographical details and aphasia classifications from the Boston Diagnostic Aphasia Examination).

Brain imaging is shown in Fig. 1 and Table 1 summarizes the lesion for each aphasic stroke patient. MR images were available for five cases (NY, SC, ME, KH, LS) and CT was available for a further two (BB, KA). It was not possible to obtain scans for three patients (PG, JM, MS) due to a lack of consent or contraindications for MRI, although written reports of previous CT scans were available for PG and JM. In line with the literature on semantic impairment in stroke aphasia, all of the patients had left temporoparietal and/or prefrontal lesions.

The stroke aphasic group were compared with 10 SD cases identified through the Memory and Cognitive Disorders Clinic at Addenbrooke’s Hospital, Cambridge, UK. These patients, first described by Bozeat *et al.* (2000), fulfilled all of the published criteria for SD (Hodges *et al.*, 1992): they had word-finding difficulties in the context of fluent speech and showed impaired semantic knowledge and single word comprehension; in contrast, phonology, syntax, visual-spatial abilities and day-to-day memory were relatively well preserved. MRI revealed focal bilateral atrophy of the inferior and lateral aspects of the anterior temporal lobes in every case. The level of impairment on verbal and non-verbal

Table 1 Background details for comprehension-impaired stroke aphasic patients

Case	Age	Sex	Education (leaving age)	Neuroimaging summary	L frontal lesion	L temporal lesion	Aetiology of CVA	Years since CVA	Aphasia type	BDAE comprehension (%)	BDAE fluency (%)	BDAE repetition (%)	Nonword repetition (%)	Word repetition (%)
NY	63	M	15	L frontal–temporal–parietal	✓	✓		4.5	Conduction	47	37	40	40	81
SC	76	M	16	L occipital–temporal (and R frontal–parietal)	✗	✓	Haemorrhage	5.5	Anomic/TSA	37	90	60	87	98
ME	36	F	16	L occipital–temporal	✗	✓	Subarachnoid haemorrhage	6.5	TSA	33	100	100	93	100
KH	73	M	14	L occipital–temporal and frontal	✓	✓		1.5	Mixed transcortical	30	30	40	43	80
JM	69	F	18	L frontal–temporal–parietal (CT)	✓	✓	Haemorrhage	6	TSA	22	63	40	87	95
PG	59	M	18	L frontal and capsular (CT)	✓	✓	Subarachnoid haemorrhage	5	TSA	20	40	80	73	91
LS	71	M	15	L temporal–parietal–frontal	✓	✓		3	TSA	13	90	90	90	96
BB	55	F	16	L frontal and capsular (CT)	✓	✓	Subarachnoid haemorrhage	2.5	Mixed transcortical	10	17	55	83	96
MS	73	F	14				Thomboembolic/partial haemorrhage	5	Global	10	0	0	0	0
KA	74	M	14	L frontal–temporal–parietal (CT)	✓	✓		1	Global	0	23	0	0	0

BDAE = Boston Diagnostic Aphasia Examination (Goodglass, 1983). Patients are arranged in order of BDAE comprehension scores derived from three subtests (word discrimination, commands and complex ideational material). Fluency percentile is derived from phrase length, melodic line and grammatical form ratings. Repetition percentile is average of word and sentence repetition. TSA was defined as good or intermediate fluency/repetition and poorer comprehension and aphasia classifications were confirmed by an experienced speech and language therapist. Word/nonword repetition: Tests 8 and 9 from PALPA (Psycholinguistic Assessments of Language Processing in Aphasia, Kay *et al.*, 1992).

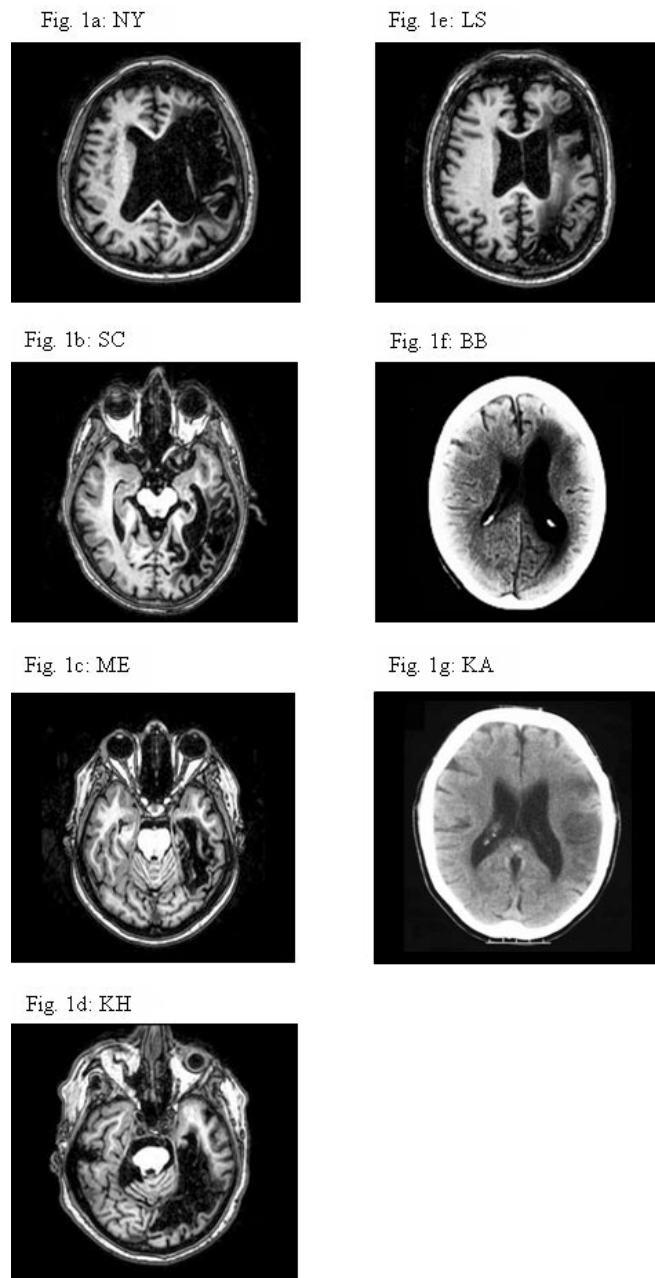


Fig. 1 Neuroimaging for the stroke aphasic patients.

semantic tasks was equivalent for the two patient groups (see below).

For one task (the Boston Naming Test), data were not available for the SD group. The CVA cases were compared with three additional SD patients recruited from Bath or Liverpool, UK. Two of these cases (BS and EK) have been described elsewhere (Jefferies *et al.*, 2005).

Assessments

General neuropsychology

The SD and CVA patients were examined on a range of general neuropsychological assessments, including forwards

and backwards digit span (Wechsler, 1987), the Visual Object and Space Perception (VOSP) battery (Warrington and James, 1991) and the Coloured Progressive Matrices test of non-verbal reasoning (Raven, 1962). The CVA cases were given additional tests of attention and executive skill: the Wisconsin Card Sort test (WCST; Milner, 1964; Stuss *et al.*, 2000), the Brixton Spatial Rule Attainment task (Burgess and Shallice, 1996) and the Elevator Counting subtests with and without distraction from the Test of Everyday Attention (Robertson *et al.*, 1994).

Semantic memory assessment

In both groups, semantic processing was assessed using a number of standard tests and some supplementary assessments. These included the pyramids and palm trees test (PPT), in which subjects decide which of two items is more associated with a target—e.g. pyramid with pine tree or palm tree (Howard and Patterson, 1992); the concrete and abstract word synonym test (Warrington *et al.*, 1998) and category fluency for six categories (animals, birds, fruit, household items, tools and vehicles). This was compared with verbal fluency for three letters (F, A and S). In both fluency tests, participants produced as many exemplars as possible within 1 min. The following additional tests were included:

64-item semantic battery

We used a battery of semantic tests to assess knowledge of a set of 64 items across different input and output modalities and types of semantic judgement (Bozeat *et al.*, 2000). There were six categories: animals, birds, fruit, household items, tools and vehicles. Concept familiarity ratings for these items were available from a previous study (Garrard *et al.*, 2001). Three tasks were selected for this study:

- (i) Camel and cactus test (CCT; Bozeat *et al.*, 2000): this is a test of semantic association similar to the PPT (Howard and Patterson, 1992). Subjects decide which of four semantically related items is most associated with a stimulus: e.g. does camel go with cactus, tree, sunflower or rose. There are two versions: in one, the probe and choices are coloured pictures; in the other, they are presented as written words that are also read aloud by the examiner. In addition, we collected ratings from normal participants ($n = 9$) that assessed (a) the ease with which the relevant semantic relationship could be identified (e.g. understanding that a camel goes with a cactus because they are both found in the desert—and not because camels eat cacti); (b) the strength of association between the probe and the target (how often are camels and cacti thought of together?) and (c) the difficulty of rejecting the distractors. The participants rated each trial on a scale of 1–5.
- (ii) Spoken word–picture matching: subjects matched spoken names to pictures. There were nine semantically

related foils alongside the target picture in each trial. The target and foils were black and white line drawings from the Snodgrass and Vanderwart (1980) set.

- (iii) Spoken picture naming: the patients were asked to name each item presented as a Snodgrass picture.

Environmental sounds test

This test contains recorded sounds from six categories: domestic/foreign animals, human sounds, household items, vehicles and musical instruments (n = 48). There are three conditions: matching sounds to pictures, sounds to written words and spoken words to pictures. On each trial, the target is presented with 10 within-category distractors. Familiarity ratings for these concepts and sounds were obtained by Bozeat *et al.* (2000).

Boston Naming Test: phonemic cueing

The effect of phonemic cues on picture naming was assessed using the Boston Naming Test (Kaplan *et al.*, 1983). Patients were asked to name the 60 test items and were given the

prescribed phonemic cue for any they could not name (typically the first two phonemes of the word).

Results

The key differences between the SD and CVA patients are summarized in Table 2.

General neuropsychology: non-semantic tests

The SD patients performed well on tests of visual-spatial processing from the VOSP (*see* Table 3). However, two CVA cases (ME, KA) failed both the position discrimination and number location subtests, and three other CVA patients (SC, LS, JM) showed impaired performance on one of these tasks. The dot counting and cube analysis subtests were influenced by the CVA patients’ impaired production of number words and executive skills respectively, making these scores hard to interpret. On the Raven’s Coloured Progressive Matrices test of non-verbal reasoning, the SD patients were largely intact whereas the CVA cases scored

Table 2 Summary of differences between SD and CVA patients

	SD	CVA
Lesion	Bilateral anterior temporal	Left inferior frontal/temporoparietal
Verbal comprehension	Poor	Poor
Non-verbal comprehension	Poor	Poor
Within-task correlations/item consistency across different input modalities	✓	✓
Between task correlations/consistency	✓	✗
Familiarity/frequency effects across tasks	✓	✗
Picture naming errors	Coordinate/superordinate	Coordinate/associative
Effect of phonemic cueing	✗	✓
Strong effect of requirement for semantic control (i.e. ease of identifying relevant association and rejecting distractors)	✗	✓
Semantic impairment linked to executive dysfunction	✗	✓

Table 3 Background neuropsychological assessment

Task	Max	Normal cut-off	SC	KH	KA	PG	BB	JM	MS	NY	LS	ME	CVA average	SD average (range)
VOSP dot counting	10	8	10	10	0*	5*	10	10	10	10	6*	3*	8.2	10
VOSP position discrimination	20	18	17*	18	14*	20	18	19	19	20	16*	15*	17.6	19.5 (17–20)
VOSP number location	10	7	10	9	6*	9	8	5*	NT	10	8	2*	7.4	9.8 (9–10)
VOSP cube analysis	10	6	9	3*	NT	10	2*	3*	8	5*	4*	4*	5.3	9.2 (6–10)
Raven’s coloured matrices (percentiles)			50	5*	5*	50	50	5*	5*	50	10	<5*		9/10 cases >90, remaining case = 75
WCST (number of categories)	6	1†	6	0*	1	0*	1	2	0*	2	0*	0*	1.2	NT
Brixton spatial anticipation (correct)	54	28	25*	7*	6*	26*	23*	NT	16*	34	14*	11*	18	NT
TEA: counting without distraction	7	6	7	6	NT	3*	4*	3*	NT	3*	3*	7	4.5	NT
TEA: counting with distraction	10	3	1*	3	NT	0*	0*	0*	NT	2*	2*	9	2.13	NT
Digit span: forwards	–	5	6	4*	0*	6	5	3*	0*	3*	4*	6	3.7	6.5 (5–8)
Digit span: backwards	–	2	2	2	NT	2	0*	2	NT	2	1*	3	1.8	4.5 (2–7)

Patients are arranged in order of picture CCT scores. NT = not tested. For individual SD data, see Bozeat *et al.* (2000). *Denotes impaired scores (2 SD below mean). †Cut-off for 50–74 year olds (regardless of educational level).

less well [$t(18) = 7.32, P < 0.0001$]. The CVA patients performed poorly on a variety of other attentional/executive measures including the Brixton, WCST and elevator counting tests (see Table 3). In addition, the CVA group had poorer/more variable digit spans. We will consider how the CVA patients' deficits on semantic tasks related to these executive and visual/perceptual impairments below.

Semantic tests

Group comparisons

Table 4 shows summary scores for a variety of published semantic tests as well as the 64 item battery and the environmental sounds tests. Most cases in both groups fell outside the normal range on all measures, indicating that the semantic impairment was multimodal in nature for both SD and CVA groups. The severity of semantic impairment was broadly comparable in the two groups. Only two tests differed significantly: letter fluency [poorer for the CVA cases; $t(17) = 4.3, P = 0.0005$] and sound to picture matching [poorer for the SD cases; $t(18) = 2.2, P = 0.04$].

Effect of familiarity/frequency

The items from the 64 battery with the highest and lowest familiarity ratings were compared ($n = 20$ in each set). Figure 2 shows the results for the two patient groups. The SD patients showed greater familiarity effects than the stroke aphasic cases in all four tasks (group by familiarity interactions were observed for all tests—word–picture matching: $F(1,11) = 7.18, P = 0.02$; picture CCT: $F(1,17) = 9.26, P = 0.04$; word CCT: $F(1,15) = 9.83, P = 0.007$; picture naming: $F(1,9) = 4.31, P = 0.07$; cases close to floor or ceiling omitted). There was no influence of familiarity for the CVA group on any of these tasks ($t < 1$). In contrast, the SD group showed significant familiarity effects on every task ($t < 2.9, P < 0.025$).

Correlations between semantic tests

Correlations across different input modalities within the same semantic task: for the SD group, accuracy was highly correlated across different versions of the same semantic test that involved different input modalities. The word and picture versions of the CCT/PPT were highly correlated (both when the same items were tapped and when the CCT and PPT were compared; $r > 0.82, P < 0.01$, see Fig. 3a). Similarly, there were strong correlations between the three versions of the environmental sounds test; $r > 0.77, P < 0.01$ (Fig. 3c).

For the CVA patients, 5/6 of the correlations between the verbal/pictorial CCT/PPT tests were significant or nearly so ($P < 0.1$; Fig. 3b). Scores on the different versions of the environmental sounds test were also correlated (Fig. 3d). Therefore, both groups showed significant correlations when the nature of the semantic task remained constant, although the correlations tended to be somewhat lower for the CVA than SD group.

Correlations across different semantic tasks: although the CVA group resembled the SD patients in showing correlations within semantic tasks, scores on tasks requiring different types of semantic judgement did not correlate (see Fig. 3f). In contrast, correlations across different semantic tasks remained very strong for the SD group (see Fig. 3e). Comparisons between different types of semantic test were assessed via the 24 pairwise combinations arising from the three categories of semantic task (picture naming, word/sound–picture matching, and judgements of semantic association—i.e. CCT/PPT). The results can be summarized as follows:

- (i) Semantic association (4 tests) with word/sound–picture matching (4 tests): 15/16 correlations were highly significant for the SD group, while only one approached significance for the CVA cases.
- (ii) Semantic association with picture naming: for SD, $r > 0.76, P < 0.01$ for all four tests. Correlations

Table 4 Semantic tests

Test	Max	Control mean (SD)	CVA mean	SD mean	CVA												SD											
					SC	KH	KA	PG	BB	JM	MS	NY	LS	ME	JP	WM	SL	AT	JC	DS	DC	JH	JW	IF				
Picture PPT	52	51.2 (1.4)	40	41	50	41	44	42	41	35	41	47	31	29	49	52	48	47	41	46	36	37	27	22				
Word PPT	52	51.1 (1.1)	41	39	51	39	44	43	35	44	34	42	39	39	48	48	46	45	44	46	25	25	32	28				
Concrete synonyms	25	23.7 (1.3)	15	14	14	12	TA	18	15	19	TA	14	14	17	13	21	15	16	12	12	14	12	NT	13				
Abstract synonyms	25	23.0 (2.1)	15	14	17	13	TA	15	13	17	TA	15	13	15	14	18	15	14	8	14	13	13	NT	13				
Letter fluency	–	44.2 (11.2)	5	21	24	0	0	2	0	1	0	5	8	14	NT	16	31	7	23	20	29	16	19	27				
Category fluency	–	95.7 (16.5)	14	31	17	18	NT	4	13	17	0	25	11	25	7	10	43	13	36	32	67	7	12	79				
64-item semantic battery																												
Naming	64	62.3 (1.6)	21	27	28	30	0	46	10	30	0	55	5	5	59	57	45	17	43	17	11	6	9	1				
Word–picture	64	63.7 (.5)	50	46	59	54	26	58	54	53	46	60	37	50	64	63	60	57	58	58	36	18	23	18				
Picture CCT	64	58.9 (3.1)	36	40	46	46	46	44	38	37	37	36	16	13	55	55	52	51	47	43	31	29	22	19				
Word CCT	64	60.7 (2.06)	37	37	56	41	36	40	30	37	42	39	16	34	58	52	34	43	37	44	19	NT	NT	10				
Environmental sounds battery																												
Sound–picture	48	41.2 (2.5)	28	22	32	30	22	33	26	24	28	28	27	33	23	42	29	20	21	23	15	14	14	15				
Sound–word	48	40.8 (3.8)	25	20	32	26	14	25	27	16	25	34	17	35	19	33	26	19	22	29	12	12	13	12				
Word–picture	48	47.8 (0.6)	39	33	41	44	21	47	33	43	37	44	35	40	43	48	38	42	39	40	25	20	23	13				

Table shows raw scores. Both patient groups are arranged in order of picture CCT scores. TA = testing abandoned; NT = not tested.

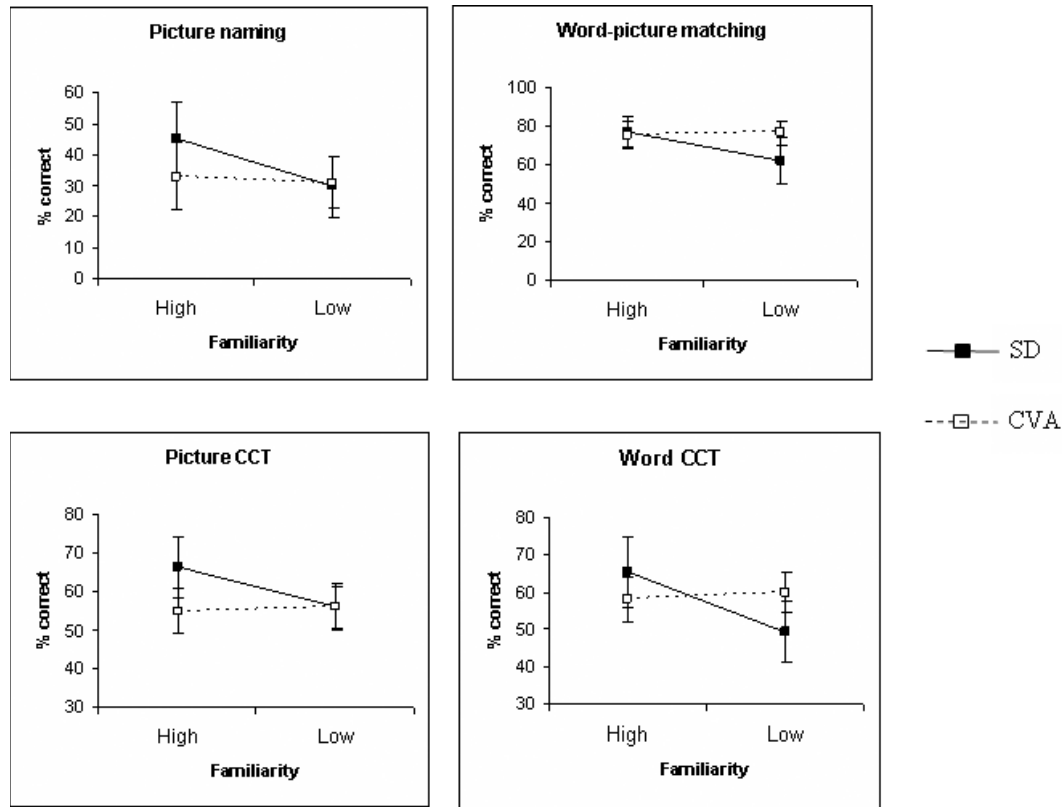


Fig. 2 Effect of familiarity on different semantic tasks from the 64-item battery.

for the CVA patients approached significance in one test.

- (iii) Naming with word/sound–picture matching: again, 4/4 correlations were significant for the SD group ($r > 0.68$, $P < 0.05$). Two reached significance for the CVA patients ($r > 0.74$, $P < 0.05$)—these were between naming and word–picture matching (there was no correlation between naming and sound–picture/word matching).

A table showing pairwise correlations between the different semantic tests is available as online Supplementary Data.

Summary of correlations within and between semantic tasks: both patient groups were impaired to a similar degree across a variety of different verbal and non-verbal semantic tasks but the nature of their semantic impairment differed (see Table 2). Like SD patients, the CVA group showed correlations between different versions of the same test that tapped different input modalities (i.e. the picture versus word versions of the PPT). However, the SD patients also showed strong correlations between simple selection tasks, such as word/sound–picture matching and tests that tapped semantic associations, whereas the CVA patients did not. Therefore, while the SD patients showed a truly global semantic impairment, the CVA group were strongly influenced by the type of semantic judgement that was required. The CVA patients did show correlations

between picture naming and word–picture matching. Although on the surface these tasks make very different demands, they have similar cognitive control requirements (choosing what to point to versus selecting a name to say aloud).

Item consistency

Simultaneous logistic regression was used to establish whether the items passed or failed in a particular semantic test predicted success on the same items in other tasks. Previous studies have shown that individual SD patients are highly consistent when the same items are probed by different tasks and this finding has been used to reinforce the claim that these patients suffer from degraded amodal semantic representations (Bozeat *et al.*, 2000). CVA patients might not show this consistency if they do not have damage to these core amodal semantic representations. Familiarity was included as a predictor as this variable might account for some of the consistency in SD (Bozeat *et al.*, 2000). Separate analyses of the two patient groups were followed by a combined analysis that included an interactive term, patient group by predicting task. Patients who were at floor/ceiling on either task were excluded. In addition, the item data for the environmental sounds battery were unavailable for one SD patient (SL).

Consistency across different input modalities within the same semantic task: both patient groups showed

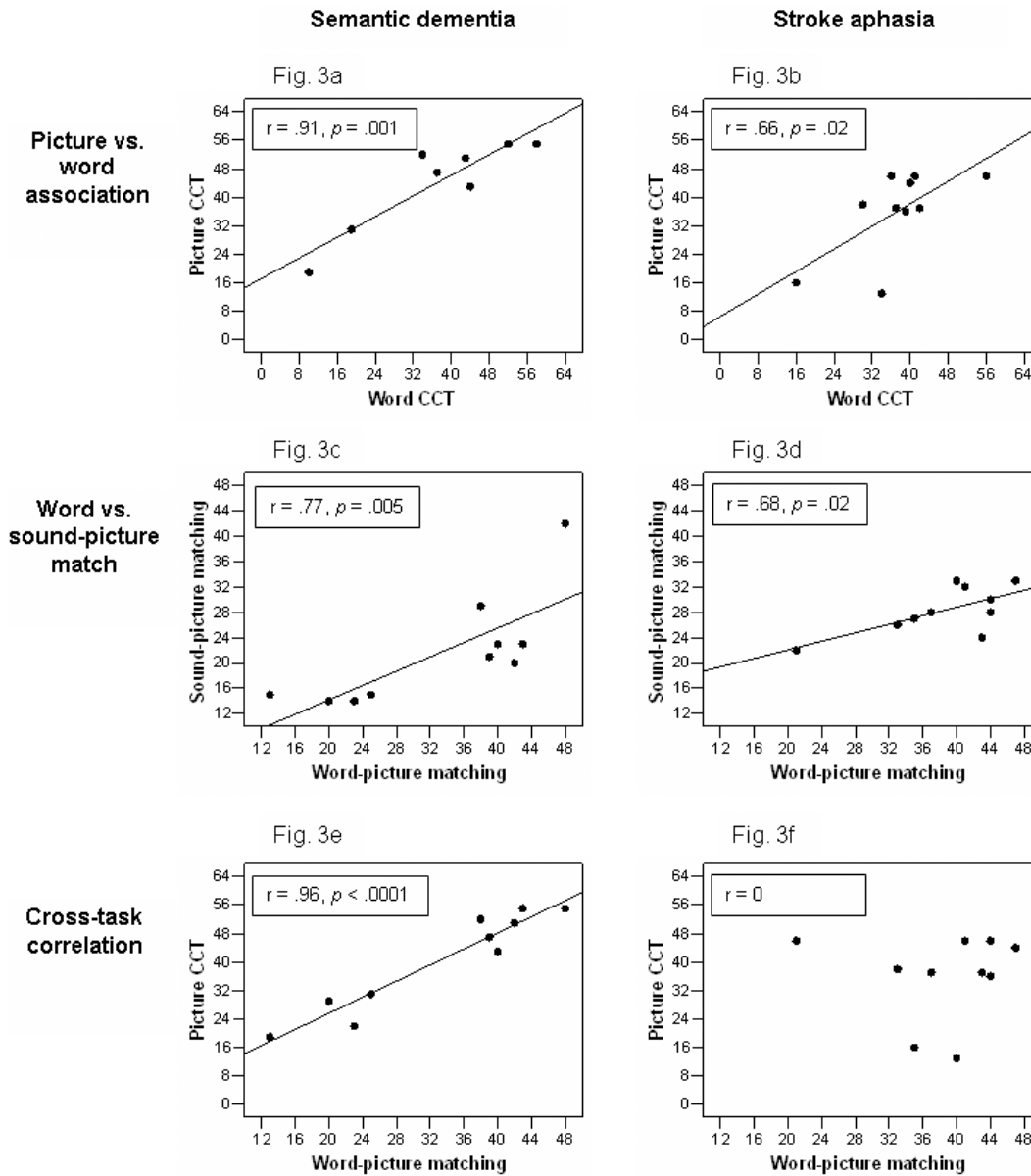


Fig. 3 Correlations across different input modalities and semantic tasks.

significant consistency between picture/word CCT (CVA $n = 8$: Wald > 28.0 , $P < 0.0001$; SD $n = 6$: Wald > 38.3 , $P < 0.0001$). Familiarity also predicted word CCT for the SD group (Wald = 9.0, $P = 0.003$) but not the CVA group. In a combined analysis, the SD cases were more consistent than the CVA patients (interactive term: Wald = 19.9 and 3.9 for picture/word CCT respectively, $P = 0.0001$ and 0.05).

A similar pattern was observed for the environmental sounds battery. Again, both groups showed significant consistency between all of the word–picture, sound–picture and sound–word matching tests. There were six combinations of these tasks and each analysis was conducted twice including either concept or sound familiarity as a predictor. All twelve of these analyses revealed significant

consistency for the SD group ($n = 9$ for sound–picture/sound–word matching, $n = 8$ for word–picture matching; Wald > 21.7 , $P < 0.0001$) and the CVA group ($n = 10$ for sound–picture/sound–word matching, $n = 9$ for word–picture matching; Wald > 4.6 , $P < 0.03$). The SD group were more consistent than the CVA group for three pairs of tasks (sound–picture versus word–picture, word–picture versus sound–picture, word–picture versus sound–picture; Wald = 5.9–3.6, $P = 0.02$ –0.06). Concept familiarity was a significant predictor for the SD group in 5/6 analyses (Wald = 33.3–4.6, $P = 0.0001$ –0.03) and sound familiarity reached significance in 6/6 analyses (Wald = 23.3–5.4, $P = 0.0001$ –0.02). For the CVA group, concept familiarity was significant in 2/6 analyses (Wald = 8.3–6.7, $P < 0.01$) and sound familiarity was a significant

predictor in 3/6 regressions (Wald = 11.8–6.5, $P < 0.01$). There was a significant interaction between patient group and concept familiarity in 2/6 analyses (Wald = 15.6–5.8, $P < 0.02$) and between group and sound familiarity in 3/6 analyses (Wald = 13.6–3.7, $P < 0.05$).

Consistency across different semantic tasks: the SD group showed significant or nearly significant consistency across every pairwise combination of tests in the 64 item semantic battery: (i) naming/word–picture matching: $n = 3$, Wald > 8.5 , $P < 0.003$; (ii) word–picture matching/picture CCT: $n = 4$, Wald > 12.1 , $P < 0.0004$; (iii) word–picture matching/word CCT: $n = 1$, Wald > 3.9 , $P < .05$; (iv) naming/picture CCT: $n = 8$, Wald > 28.6 , $P < 0.0001$; (v) naming/word CCT: $n = 6$, Wald > 2.7 , $P < 0.1$. In contrast, the CVA patients did not show strong consistency across any of these semantic tasks. For three of these tests, Wald < 1.1 , n.s. ($n = 5$ for word–picture matching/picture CCT, $n = 6$ for naming/picture and word CCT). Consistency approached significance for word–picture matching/word CCT ($n = 6$, Wald > 3.7 , $P < 0.06$) and naming/word–picture matching ($n = 3$, Wald > 3.1 , $P < 0.08$). In combined analyses, the SD cases were significantly more consistent than the CVA patients in two comparisons: word–picture matching/picture CCT (Wald > 5.0 , $P < 0.03$) and naming/picture CCT (Wald > 17.7 , $P < 0.0001$).

Summary of item consistency analyses: these item-based analyses produced results for each patient group that closely matched those found in the correlation analyses (see previous section and Table 2). SD patients showed strong item consistency when the same items were probed using various input modalities and different semantic tasks, suggesting that SD produces a loss of amodal semantic knowledge (Bozeat *et al.*, 2000). The semantically impaired stroke patients did show item consistency across different input modalities but not when the same items were probed using different styles of semantic test, indicating that semantic impairment in this condition varies with the task demands. As noted for the group comparisons (see

above), item performance was more strongly influenced by concept familiarity in SD compared with CVA.

Factors affecting decisions about semantic association

The CVA patients found particular trials within the CCT test more difficult than others (leading to the item consistency across the picture and word versions) and yet the degree of knowledge for a particular concept varied when probed by different semantic tasks (there was no correlation or item consistency across the different tests in the 64 item semantic battery). We used simultaneous logistic regression to explore factors that influenced accuracy in the picture/word CCT tests. The three factors we examined were (i) ease of determining the relevant semantic relationship, (ii) co-occurrence of probe and target and (iii) ease of rejecting distractors (all obtained from ratings).

Factors 1 and 2 correlated with performance for both groups (Factor 1 SD: $r = 0.34$, $P = 0.006$; CVA = $r = 0.53$, $P < 0.001$; Factor 2 SD: $r = 0.44$, $P < 0.001$; CVA = $r = 0.34$, $P = 0.006$). Factor 3 correlated with accuracy for the CVA group ($r = 0.50$, $P < 0.001$) but not for the SD group ($r = 0.24$, $P = 0.06$). Factors 1 and 3 both had a greater effect on the CVA than the SD patients (Factor 1 by group: Wald = 5.67, $P < 0.02$; Factor 3 by group: Wald = 9.20, $P = 0.002$). In contrast, there was no interaction with group for Factor 2. Therefore, both groups were equally sensitive to inter-item frequency but the CVA patients were more strongly affected by how hard it was to identify the relevant semantic association and to reject the distractors.

Naming errors

The majority of picture naming errors for both groups were semantic errors and omissions (see Table 5). There were no group differences in the frequency of semantic,

Table 5 Picture naming errors

	CVA SD		CVA								SD									
	SC	KH	PG	BB	JM	NY	LS	ME	JP	WM	SL	AT	JC	DS	DC	JH	JW	IF		
Prop items correct	0.41	0.41	0.44	0.47	0.72	0.16	0.47	0.84	0.08	0.08	0.91	0.89	0.72	0.27	0.67	0.27	0.17	0.09	0.14	0.02
Error types as a proportion of total errors																				
Semantic	0.33	0.45	0.43	0.27	0.52	0.18	0.32	0.43	0.13	0.32	0.57	0.44	0.60	0.49	0.65	0.13	0.42	0.45	0.39	0.37
Phonological	0.11	0.02	0.13	0.12	0.04	0.04	0.34	0.21	0.01	0	0	0	0.15	0	0	0.02	0.02	0.02	0.02	0
Perseveration	0.15	0.11	0.07	0.12	0.20	0.09	0.11	0.07	0.49	0.02	0.43	0	0.10	0.02	0	0.02	0.15	0.13	0.02	0.19
Omission	0.32	0.37	0.17	0.48	0.20	0.67	0.18	0.14	0.09	0.64	0	0.44	0.05	0.32	0.35	0.83	0.40	0.39	0.53	0.41
Unrelated/other	0.10	0.05	0.20	0	0.04	0.02	0.05	0.14	0.29	0.03	0	0.11	0.10	0.17	0	0	0	0.02	0.05	0.04
Types of semantic error as a proportion of total single-word semantic errors																				
Coordinate	0.55	0.74	0.60	0.33	0.80	0.50	0.71	0.50	0.56	0.36	100	0.50	0.83	0.60	0.90	100	0.72	0.63	0.22	100
Superordinate	0.18	0.25	0.10	0.33	0.10	0.13	0.14	0	0	0.64	0	0.50	0.17	0.40	0.10	0	0.28	0.25	0.78	0
Associative	0.27	0.01	0.30	0.33	0.10	0.38	0.14	0.50	0.44	0	0	0	0	0	0	0	0	0.13	0	0

Both patient groups are arranged in order of picture CCT scores.

unrelated, perseverative or omission errors. The CVA patients made significantly more phonological errors than the SD patients [$t(16) = 2.2$, $P = 0.04$; data expressed as a proportion of errors]. There were also clear differences in the kinds of semantic errors that were produced; the SD patients' single-word semantic errors were restricted to coordinate (dog → 'cat') and superordinate (dog → 'animal') errors, whereas the CVA patients made additional associative responses that were semantically associated with the target but from a different semantic category (e.g. squirrel → 'nuts'; glass → 'ice'; lorry → 'diesel'). These responses were significantly more common for the CVA cases [$t(16) = 4.58$, $P = 0.0003$; data expressed as a proportion of single-word semantic errors] and almost completely absent for the SD cases (the only exception being a single response from patient JH).

Effect of phonemic cueing on picture naming

Figure 4 shows the effect of phonemic cues on picture naming. All of the stroke aphasic patients showed a significant improvement with phonemic cueing (McNemar, one tailed, $P < 0.017$). In most cases, this effect was very substantial. In contrast, phonemic cueing did not allow the SD patients to produce object names that they could not recall spontaneously. Again this result would seem to mirror the consistency and correlational analyses reported above: SD performance is invariant such that when a concept is degraded, this deficit is demonstrated across all tasks and conditions. In contrast, CVA performance is influenced by the nature of the task and can be boosted if external support (e.g. cueing) is given by the examiner.

Correlations with executive impairment

As the CVA patients were more strongly influenced by the nature of the semantic task and by the type of semantic judgement required within a task than the SD patients, it is important to establish whether this relates to their concurrent executive dysfunction. Table 3 shows scores on

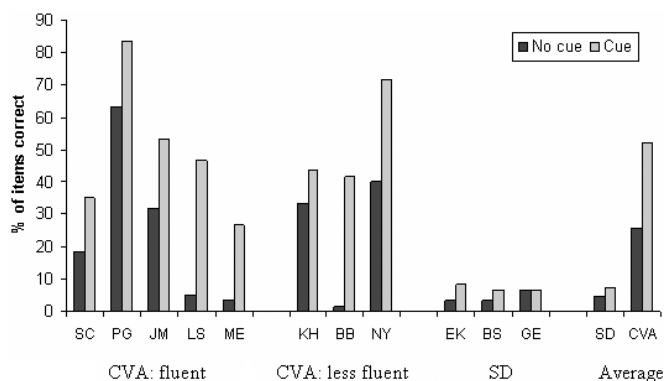


Fig. 4 Effect of phonemic cueing on picture naming.

the Raven's Coloured Progressive Matrices test for both patient groups. Table 6 (see Supplementary material) gives the performance of the CVA patients on a range of other executive tests. Two cases, MS and KA, were unable to perform the Elevator Counting task due to very restricted verbal output. JM withdrew from the study before the Brixton test was administered.

Correlations with Raven's Matrices for SD and CVA: the semantically impaired CVA patients showed correlations between Raven's Matrices and 64 item naming/word–picture matching ($r > 0.61$, $P < 0.031$). The correlations with picture PPT and sound–word matching approached significance ($r > 0.45$, $P < 0.1$). For the SD group, there were no significant correlations between Raven's Matrices and any of the semantic tests ($r < 0.29$); however, the SD patients performed relatively well at this test so the range of scores was limited.

Correlations with other executive tests for CVA cases: the CVA group showed severe deficits on every executive/attentional test. An executive skill factor was derived from the two executive tests that all ten patients were tested on (Raven's Matrices; WCST). This factor correlated with various semantic tasks: the picture/word PPT ($r > 0.60$, $P < 0.04$), 64 item word–picture matching ($r = 0.57$, $P = 0.04$) and 64 item naming ($r = 0.55$, $P = 0.05$). The correlation with word CCT approached significance ($r = 0.47$, $P = 0.09$). Difficulties on semantic tests in this group therefore appeared to be related to impairments of executive function.

General discussion

This study directly compared the nature of the semantic impairment resulting from two aetiologies: SD and stroke aphasia (CVA). The research was motivated by the puzzling fact that comprehension impairment in CVA is associated with damage to frontal and temporoparietal areas, whereas in SD, the pathology is centred on the anterior temporal lobes bilaterally. As functional neuroimaging studies (at least those using fMRI; see Introduction) have also emphasized the importance of left inferior frontal and temporoparietal areas in semantic processing, some reviews of the neural basis of comprehension have made no mention of the anterior temporal lobes (Mesulam, 1998; Catani and Ffytche, 2005). Similarly, theoretical perspectives that have arisen from studies of SD patients have not considered the contribution of left inferior frontal and temporoparietal cortex (Rogers *et al.*, 2004). It is therefore important to establish the specific roles of these different brain regions in semantic cognition.

Although the CVA and SD patients failed the same semantic tests and obtained largely equivalent scores, there were clear qualitative differences between them (see Table 2). The SD patients showed high correlations between scores on different semantic tasks and strong item consistency when the same concepts were examined in different tests. This pattern supports the view that the anterior temporal lobes

support a single system of amodal semantic knowledge which degrades in SD (Bozeat *et al.*, 2000; Patterson and Hodges, 2000; Rogers *et al.*, 2004). The SD group were also highly sensitive to item familiarity/frequency, in line with the proposal that frequently encountered items form stronger representations, which are more robust in the face of semantic degradation (*see* Rogers *et al.*, 2004). The SD patients' picture naming errors were largely coordinate and superordinate responses (zebra → 'horse' or 'animal'), supporting the characterization of SD as a gradual loss of knowledge, which is most pronounced at the specific level. Finally, the unresponsiveness of SD patients to phonemic cues in picture naming endorses the conclusion that semantic knowledge is impaired (as opposed to being unavailable) in this condition.

The stroke aphasic patients showed a different pattern. They were insensitive to the effects of familiarity/frequency and only showed significant item consistency/correlations across tasks requiring similar types of semantic judgement. Performance was highly consistent across modalities (e.g. word CCT versus picture CCT) but scores on different types of semantic task—e.g. picture CCT and word–picture matching—did not correlate. Even though the different semantic tasks contained similar or identical concepts (in the case of the 64 item semantic battery), their executive/control requirements varied. For example, in word–picture matching, it is necessary to select the specified item from an array of semantically related distractors. In contrast, the picture CCT task involves identifying which aspects of a concept are relevant to a particular trial: e.g. to match the camel with the cactus (and not the tree, sunflower or rose), it is necessary to understand that the relevant dimension is 'desert location' and to rule out alternatives—e.g. selecting on the basis of what camels eat. Despite the fact that the stroke patients showed semantic deficits in every modality that was tested, the lack of consistency across different tasks indicates that their problem did not stem from a loss of amodal knowledge. We propose that the correlations/consistency that they did exhibit across different versions of the same task arose because there was systematic variation in the semantic control required for each trial. Thus, ratings of the difficulty of (i) detecting the relevant semantic association and (ii) rejecting the distractors in the CCT test accounted for the performance of the CVA group more than the SD cases.

Further, differences between the groups were observed in picture naming. The CVA patients produced some responses that were associatively rather than categorically related to the target. It is difficult to account for these errors in terms of a loss of knowledge: instead, they might have resulted from a failure of controlled semantic retrieval, given that on these trials, the patients' responses were driven by strong but irrelevant associations. Similar naming errors have been described previously for a single semantically and executively impaired CVA patient (Humphreys and Forde, 2005). The CVA patients' picture naming was also greatly improved by phonemic cues, indicating that they retained knowledge that

they could not reliably retrieve without external support. The phonemic cue would have boosted activation of the target word relative to semantically related competitors and thus may have overcome the patients' difficulties in directing attention to relevant parts of semantic space.

We have demonstrated that the breakdown of semantic cognition in our CVA and SD groups had a different nature: while the SD cases had degraded semantic representations, the CVA patients had difficulty working flexibly with the knowledge they retained and their deficits were associated with impairments of executive function. As noted in the Introduction, a similar distinction has been drawn between 'storage' and 'access' semantic impairments (Warrington and McCarthy, 1983; Warrington and Cipolotti, 1996; Gots and Plaut, 2002): 'storage' disorders are associated with strong frequency effects, highly consistent performance and no impact of cueing, whereas 'access' deficits are said to produce no frequency effects, inconsistent responses and strong effects of cueing. Our findings partly support this distinction: the characteristics of 'storage' impairment were associated with SD, whereas 'access' deficits occurred in comprehension-impaired stroke patients. This association between aetiology and type of impairment confirms a pattern noted previously by Warrington and Cipolotti (1996) amongst single cases. However, while 'access' patients are expected to be inherently inconsistent (because semantic information can be temporarily unavailable), we found that the degree of consistency for the semantically impaired stroke patients depended on the nature of the semantic processing that was required—they were not less consistent than the SD group in general. The access/storage distinction also fails to provide a straightforward interpretation of some of our other findings—e.g. the CVA patients' difficulties in focusing on only the relevant associations in the CCT test and their associative errors in picture naming.

Theoretical interpretation

Semantic cognition—our ability to use semantic knowledge efficiently and accurately in all situations (i.e. all verbal and non-verbal receptive and expressive activities)—requires two interacting elements. The first is a set of amodal semantic representations that are formed through the distillation of information arising in various association areas specific to particular input or output modalities (*see* Wernicke, 1874; Damasio, 1989; Martin *et al.*, 1995; Damasio *et al.*, 2004, for related theories). The anterior temporal lobes are strongly connected to all the cortical association areas (Gloor, 1997) and are thus a prime location for this type of amodal data reduction. The Rogers *et al.* (2004) computational model is an implementation of this neuroanatomically-inspired theory of semantic memory. This model uses a set of intermediate units to support the translation of information within and between different sensory and verbal modalities (*see* Fig. 5). In doing so the model is able to extract high-order, amodal information about concepts, allowing it to

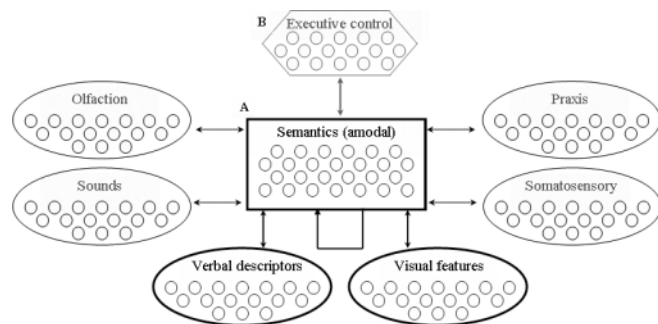


Fig. 5 A computational architecture for semantic cognition.

distinguish between semantically similar entities as well as generalize information in an appropriate fashion. According to this view, the left and right anterior temporal lobes form a single store of semantic knowledge which becomes degraded in SD. Although patients who have undergone temporal lobe resection for epilepsy (TLE) do not always show comprehension problems, apparently contradicting this view (e.g. Seidenberg *et al.*, 2002; Glosser *et al.*, 2003), there is increasing evidence to suggest that intractable epilepsy can produce functional reorganization: therefore normal brain organization cannot be inferred from this patient group (Springer *et al.*, 1999; Janszky *et al.*, 2003; Thivard *et al.*, 2005). In addition, resection for temporal lobe epilepsy is a unilateral procedure. If semantic knowledge is distributed across the left and right temporal lobes, deficits of semantic memory may be much more severe following bilateral damage to this brain region, as in SD.

Although the Rogers *et al.* (2004) model learns to reactivate all appropriate information from a single modality input (e.g. the name of an object generates information about how it looks, sounds, smells and feels), it cannot be a complete account of semantic cognition because all information is activated in a rigid fashion. This leads us directly to the second factor that underpins semantic cognition: semantic control. Although, we know many different things about objects, the aspects that are relevant for a particular task or context vary. Therefore there has to be flexibility in the information being activated by the underlying amodal concept to produce task-appropriate behaviour. For example, we know many things about pianos including the manner in which notes are extracted from the instrument and the fact that they are heavy. Semantic control is required if task-appropriate behaviour is going to follow; thus actions related to fine-motor movements need to be to the fore when playing a piano whilst these will be irrelevant when moving it across a room (Saffran, 2000). The need for semantic control can be seen in experimental semantic assessments as well as in everyday life. In the CCT test, e.g. it is necessary to focus attention on particular features of concepts whilst ignoring others.

Figure 5 shows an extended version of the Rogers *et al.* (2004) semantic framework that incorporates both amodal semantic representations and semantic control. As before,

semantic representations are formed through the interaction of different sensory/verbal modalities by means of a set of intermediate units (in the anterior temporal lobes). When these units or their connections are damaged, as they are in SD, then the core semantic representations themselves become degraded. Due to the amodal nature of these semantic representations, the degraded knowledge is apparent in all tasks and leads to high correlations and item consistency across different types and modalities of semantic tasks. These core amodal semantic representations interact with a semantic control system that shapes or regulates the activation of the information associated with a concept in order to produce task-appropriate behaviour. It is this aspect of semantic cognition that we believe is compromised in our comprehension-impaired stroke patients. This suggestion concurs with Goldstein's (1948) description of aphasia as a loss of 'abstract attitude', leading to an over-reliance on the most immediate, obvious aspects of experience. So while SD patients suffer from degraded semantic representations, the semantic impairment in stroke aphasia seems to result from deregulated semantic cognition.

A loss of semantic control rather than core amodal semantic knowledge *per se*, would seem to explain the behavioural profile of the semantically-impaired aphasic patients. Their deficit is multimodal because all tasks, irrespective of which sensory/verbal modalities are involved, require at least some degree of semantic control. They demonstrate similar levels of semantic performance across different versions of the same semantic task because the semantic control requirements are held constant. However, this consistency drops away when comparing across different tasks because the semantic control requirements change; although the aphasic patients may be able to regulate the activation of information appropriate for one task (e.g. naming), they may be unable to reshape the information required for another test/situation even though the same concept is being tapped. The positive effects of cueing would seem to follow naturally in that this external source of constraint helps by reducing the amount of self-generated semantic control required in the task. Finally, performance on semantic association tests like the CCT can be predicted if the ease of selecting the correct association and rejecting irrelevant factors are taken into account—these ratings presumably reflect the difficulty of controlling the semantic representations appropriately.

Our working hypothesis, namely that the multimodal comprehension impairment in stroke aphasia results from a failure of semantic control, is consistent with several recent studies showing correlations between attentional/executive measures and standard assessments of comprehension (Baldo *et al.*, 2005; Wiener *et al.*, 2004). Dual task studies have also shown that divided attention disrupts semantic judgements and sentence completion in aphasics more than normal subjects (Murray *et al.*, 1997; Murray, 2000). However, these studies did not examine how semantic cognition was impaired as a consequence of attentional/executive deficits, as we have done.

Likewise, our working hypothesis is consistent with previous functional neuroimaging research. This has suggested that the LIPC plays an important role in controlled semantic retrieval (Demb *et al.*, 1995; Thompson–Schill *et al.*, 1997; Wagner *et al.*, 2001; Gold and Buckner, 2002). The CVA patients in our study had concomitant deficits of frontal/executive function and the majority of them (7/9 with imaging) also had large left frontal lobe lesions (the remaining two cases are discussed below). LIPC might bias processing in the anterior temporal lobes towards task-relevant goals and away from dominant associations that are inappropriate for a given situation. These two components of semantic cognition—amodal knowledge in anterior temporal cortex and semantic control which draws on LIPC—are likely to be highly interactive rather than simply additive: subtle deficits of semantic control are likely to have a greater impact in combination with damage to the semantic store itself. In line with the interactive view, observations of SD patients suggest that they rely more heavily on problem solving in an attempt to overcome their extremely impoverished knowledge.

Our findings provide an explanation for the ‘unexpected brain-language relationships in aphasia’ described by Berthier (2001). He reported that TSA could accompany both temporoparietal and frontal lesions with few differences between the two subgroups on the Western Aphasia Battery. Likewise, in our study, patients with frontal and temporal/parietal infarcts were not distinguishable in any meaningful way (both groups apparently had failures of semantic control). This similarity might be explained by the fact that these brain regions are an integral part of a highly distributed neural network underpinning semantic cognition. Indeed, we know that these two regions are highly connected via the arcuate and superior longitudinal fasciculi (Gloor, 1997; Parker *et al.*, 2005). Although neuroimaging studies have focused on the role of the LIPC in semantic control, our results are consistent with the view that executive functioning is underpinned by interactivity between frontal and parietal cortical fields—damage to either component of this system produces a similar disruption to cognitive control. Several neuroimaging studies have found that executive functions, such as task switching and dual-task coordination activate left inferior parietal cortex (BA40) as well as prefrontal regions (Garavan *et al.*, 2000; Collette *et al.*, 2005). Similarly, Peers *et al.* (2005) identified similar visual attentional deficits in patients with frontal and temporoparietal lesions. All these results point to LIPC and temporoparietal regions working as a coupled neural system in underpinning semantic control. Accordingly, if either region or the connection between them is damaged, then the same type of deregulated semantic performance results.

Conclusion

Although the SD and CVA patients were impaired on the same semantic tasks to a similar degree, they did not fail them for the same reasons. We have suggested that the SD

patients had degradation of the amodal semantic representations underpinned by the anterior temporal lobes, whereas the CVA patients had deficits of semantic control resulting from frontal and/or temporal–parietal lesions (without a loss of semantic knowledge *per se*). Our study helps to bring together the disparate literatures mentioned in the Introduction: we have established that multimodal semantic impairments can be observed in both TSA and less fluent stroke aphasic patients, and that both types of CVA patients can show the hallmarks of a ‘semantic access’ disorder. However, our semantically impaired CVA cases did not have unreliable access to semantic representations in general, but instead had difficulty using these semantic representations in a flexible fashion to produce task/context-appropriate behaviour.

Supplementary data

The supplementary data are available at *Brain* Online.

Acknowledgements

We are very grateful to the patients and their carers for their generous assistance with this study. We would also like to thank Karalyn Patterson and John Hodges for providing the SD data first published by Bozeat *et al.* (2000), as well as Roy Jones, Mark Doran, Rachel Byrne, Linda Collier and Claire Slinger for referring some of the patients to us. We gratefully acknowledge Peter Garrard’s assistance with the interpretation of the brain scans and Karen Sage’s help with classifying the stroke patients’ aphasic syndromes. We would like to thank Tim Rogers and Karalyn Patterson for useful discussions about these data. This work was supported by a grant from the NIMH (MH64445) and an RCUK fellowship awarded to E.J.

References

- Albert M, Goodglass H, Helms NA, Rubens AB, Alexander MN. Clinical aspects of dysphasia. New York: Springer-Verlag; 1981.
- Baldo JV, Dronkers NF, Wilkins D, Ludy C, Raskin P, Kim JY. Is problem solving dependent on language? *Brain Lang* 2005; 92: 240–50.
- Berthier ML. Transcortical aphasias. Hove, UK: Psychology Press; 2000.
- Berthier ML. Unexpected brain-language relationships in aphasia: evidence from transcortical sensory aphasia associated with frontal lobe lesions. *Aphasiology* 2001; 15: 99–130.
- Bozeat S, Lambon Ralph MA, Graham KS, Patterson K, Wilkin H, Rowland J, et al. A duck with four legs: investigating the structure of conceptual knowledge using picture drawing in semantic dementia. *Cogn Neuropsychol* 2003; 20: 27–47.
- Bozeat S, Lambon Ralph MA, Patterson K, Garrard P, Hodges JR. Non-verbal semantic impairment in semantic dementia. *Neuropsychologia* 2000; 38: 1207–15.
- Bozeat S, Lambon Ralph MA, Patterson K, Hodges JR. When objects lose their meaning: what happens to their use? *Cogn Affect Behav Neurosci* 2002; 2: 236–51.
- Bright P, Moss H, Tyler LK. Unitary vs multiple semantics: PET studies of word and picture processing. *Brain Lang* 2004; 89: 417–32.
- Burgess P, Shallice T. Bizarre responses, rule detection and frontal lobe lesions. *Cortex* 1996; 32: 241–59.
- Catani M, Ffytche DH. The rises and falls of disconnection syndromes. *Brain* 2005; 128: 2224–39.

- Chee MWL, Weekes B, Lee KM, Soon CS, Schreiber A, Hoon JJ, et al. Overlap and dissociation of semantic processing of Chinese characters, English words, and pictures: evidence from fMRI. *Neuroimage* 2000; 12: 392–403.
- Chertkow H, Bub D, Deaudon C, Whitehead V. On the status of object concepts in aphasia. *Brain Lang* 1997; 58: 203–32.
- Cipolotti L, Warrington EK. Towards a unitary account of access dysphasia: a single-case study. *Memory* 1995; 3: 309–32.
- Coccia M, Bartolini M, Luzzi S, Provinciali L, Lambon Ralph MA. Semantic memory is an amodal, dynamic system: evidence from the interaction of naming and object use in semantic dementia. *Cogn Neuropsychol* 2004; 21: 513–27.
- Cohen R, Kelter S, Woll G. Analytical competence and language impairment in aphasia. *Brain Lang* 1980; 10: 331–47.
- Collette F, Olivier L, Van der Linden M, Laureys S, Delfiore G, Luxen A, et al. Involvement of both prefrontal and inferior parietal cortex in dual task performance. *Cogn Brain Res* 2005; 24: 237–51.
- Coughlan AK, Warrington EK. The impairment of verbal semantic memory: a single case study. *J Neurol Neurosurg Psychiatry* 1981; 44: 1079–83.
- Crinion JT, Lambon Ralph MA, Warburton EA, Howard D, Wise RJS. Temporal lobe regions engaged during normal speech comprehension. *Brain* 2003; 126: 1193–201.
- Crutch SJ, Warrington EK. Spatial coding of semantic information: knowledge of country and city names depends on their geographical proximity. *Brain* 2003; 126: 1821–9.
- Crutch SJ, Warrington EK. The semantic organisation of proper nouns: the case of people and brand names. *Neuropsychologia* 2004; 42: 584–96.
- Crutch SJ, Warrington EK. Gradients of semantic relatedness and their contrasting explanations in refractory access and storage semantic impairments. *Cogn Neuropsychol* 2005; 22: 851–76.
- Damasio AR. The brain binds entities and events by multiregional activation from convergence zones. *Neural Comput* 1989; 1: 123–32.
- Damasio H, Tranel D, Grabowski T, Adolphs R, Damasio A. Neural systems behind word and concept retrieval. *Cognition* 2004; 92: 179–229.
- De Renzi E, Faglioni P, Scotti G, Spinnler H. Impairment in associating colour to form, concomitant with aphasia. *Brain* 1972; 95: 293–304.
- Demb JB, Desmond JE, Wagner AD, Vaidya CJ, Glover GH, Gabrieli JDE. Semantic encoding and retrieval in the left inferior prefrontal cortex: a functional MRI study of task difficulty and process specificity. *J Neurosci* 1995; 15: 5870–8.
- Devlin JT, Matthews PM, Rushworth MFS. Semantic processing in the left inferior prefrontal cortex: a combined functional magnetic resonance imaging and transcranial magnetic stimulation study. *J Cogn Neurosci* 2003; 15: 71–84.
- Devlin JT, Russell RP, Davis MH, Price CJ, Wilson J, Moss HE, et al. Susceptibility-induced loss of signal: comparing PET and fMRI on a semantic task. *Neuroimage* 2000; 11: 589–600.
- Ferrand L, Humphreys GW. Transfer of refractory states across languages in a global aphasic patient. *Cogn Neuropsychol* 1996; 13: 1163–91.
- Forde EME, Humphreys GW. Refractory semantics in global aphasia: on semantic organization and the access-storage distinction in neuropsychology. *Memory* 1995; 3: 265–307.
- Forde EME, Humphreys GW. A semantic locus for refractory behaviour: implications for access-storage distinctions and the nature of semantic memory. *Cogn Neuropsychol* 1997; 14: 367–402.
- Funnell E. Objects and properties: a study of the breakdown of semantic memory. *Memory* 1995; 3: 497–518.
- Gainotti G, Lemmo MA. Comprehension of symbolic gestures in aphasia. *Brain Lang* 1976; 3: 451–60.
- Gainotti G, Miceli G, Caltagirone C. The relationship between conceptual and semantic-lexical disorders in aphasia. *Int J Neurosci* 1979; 10: 45–50.
- Gainotti G, Silveri MC, Villa G, Caltagirone C. Drawing objects from memory in aphasia. *Brain* 1983; 106: 613–22.
- Garavan H, Ross TJ, Li SL, Stein EA. A parametric manipulation of central executive functioning. *Cereb Cortex* 2000; 10: 585–92.
- Garrard P, Lambon Ralph MA, Hodges JR, Patterson K. Prototypicality, distinctiveness, and intercorrelation: analyses of the semantic attributes of living and nonliving concepts. *Cogn Neuropsychol* 2001; 18: 125–74.
- Gloor P. The temporal lobe and the limbic system. Oxford: Oxford University Press; 1997.
- Glosser G, Salvucci AE, Chiaravalloti ND. Naming and recognizing famous faces in temporal lobe epilepsy. *Neurology* 2003; 61: 81–6.
- Gold BT, Buckner RL. Common prefrontal regions coactivate with dissociable posterior regions during controlled semantic and phonological tasks. *Neuron* 2002; 35: 803–812.
- Goldstein K. Language and language disturbances. New York: Grune and Stratton; 1948.
- Goodglass H. The assessment of aphasia and related disorders (2nd edn). Philadelphia: Lea & Febiger; 1983.
- Gotts SJ, Plaut DC. The impact of synaptic depression following brain damage: a connectionist account of ‘access/refractory’ and ‘degraded-store’ semantic impairments. *Cogn Affect Behav Neurosci* 2002; 2: 187–213.
- Hart J, Gordon B. Delineation of single-word semantic comprehension deficits in aphasia with anatomical correlation. *Ann Neurol* 1990; 27: 226–31.
- Hodges JR, Patterson K, Oxbury S, Funnell E. Semantic dementia: progressive fluent aphasia with temporal-lobe atrophy. *Brain* 1992; 115: 1783–806.
- Howard D, Patterson K. Pyramids and palm trees: a test of semantic access from pictures and words. Bury St Edmunds, UK: Thames Valley Test Company; 1992.
- Humphreys GW, Forde EME. Naming a giraffe but not an animal: base-level but not superordinate naming in a patient with impaired semantics. *Cogn Neuropsychol* 2005; 22: 539–58.
- Janszky J, Jokeit H, Heinemann D, Schulz R, Woermann FG, Ebner A. Epileptic activity influences the speech organization in medial temporal lobe epilepsy. *Brain* 2003; 126: 2043–51.
- Jefferies E, Jones RW, Bateman D, Lambon Ralph MA. A semantic contribution to nonword recall? Evidence for intact phonological processes in semantic dementia. *Cogn Neuropsychol* 2005; 22: 183–212.
- Kaplan E, Goodglass H, Weintraub S. Boston naming test. Philadelphia: Lea & Febiger; 1983.
- Kapur N, Barker S, Burrows EH, Ellison D, Brice J, Illis LS, et al. Herpes-simplex encephalitis: long-term magnetic-resonance-imaging and neuropsychological profile. *J Neurol Neurosurg Psychiatry* 1994; 57: 1334–42.
- Kay J, Lesser R, Coltheart M. Psycholinguistic assessments of language processing in aphasia (PALPA). Hove, UK: Lawrence Erlbaum Associates; 1992.
- Kelter S, Cohen R, Engel D, List G, Strohner H. Aphasic disorders in matching tasks involving conceptual analysis and covert naming. *Cortex* 1976; 12: 383–94.
- Kelter S, Cohen R, Engel D, List G, Strohner H. The conceptual structure of aphasic and schizophrenic patients in a non-verbal sorting task. *J Psycholinguist Res* 1977; 6: 279–303.
- Lambon Ralph MA, Graham KS, Ellis AW, Hodges JR. Naming in semantic dementia—what matters? *Neuropsychologia* 1998; 36: 775–84.
- Lambon Ralph MA, Graham KS, Patterson K, Hodges JR. Is a picture worth a thousand words? Evidence from concept definitions by patients with semantic dementia. *Brain Lang* 1999; 70: 309–35.
- Lambon Ralph MA, McClelland JL, Patterson K, Galton CJ, Hodges JR. No right to speak? The relationship between object naming and semantic impairment: neuropsychological abstract evidence and a computational model. *J Cogn Neurosci* 2001; 13: 341–56.
- Martin A, Haxby JV, Lalonde FM, Wiggs CL, Ungerleider LG. Discrete cortical regions associated with knowledge of color and knowledge of action. *Science* 1995; 270: 102–5.
- Mesulam MM. From sensation to cognition. *Brain* 1998; 121: 1013–52.
- Milner B. Effects of different brain lesions on card sorting: the role of the frontal lobes. *Arch Neurol* 1964; 9: 100–10.
- Mummery CJ, Patterson K, Price CJ, Ashburner J, Frackowiak RSJ, Hodges JR. A voxel-based morphometry study of semantic dementia: relationship between temporal lobe atrophy and semantic memory. *Ann Neurol* 2000; 47: 36–45.
- Murray LL. The effects of varying attentional demands on the word retrieval skills of adults with aphasia, right hemisphere brain damage, or no brain damage. *Brain Lang* 2000; 72: 40–72.

- Murray LL, Holland AL, Beeson PM. Auditory processing in individuals with mild aphasia: a study of resource allocation. *J Speech Lang Hear Res* 1997; 40: 792–808.
- Narain C, Scott SK, Wise RJS, Rosen S, Leff A, Iversen SD, et al. Defining a left-lateralized response specific to intelligible speech using fMRI. *Cereb Cortex* 2003; 13: 1362–8.
- Nestor PJ, Fryer TD, Hodges JR. Declarative memory impairments in Alzheimer's disease and semantic dementia. *Neuroimage* 2006; 30: 1010–20.
- Parker GJM, Luzzi S, Alexander DC, Wheeler-Kingshott CAM, Clecarelli O, Lambon Ralph MA. Lateralization of ventral and dorsal auditory-language pathways in the human brain. *Neuroimage* 2005; 24: 656–66.
- Patterson K, Hodges JR. Semantic dementia: one window on the structure and organisation of semantic memory. In: Boller F, Grafman J, editors. *Handbook of neuropsychology, Vol 2. Memory and its disorders*, 2nd edn. Amsterdam: Elsevier; 2000. p. 313–33.
- Peers PV, Ludwig CJH, Rorden C, Cusack R, Bonfiglioli C, Bundesen C, et al. Attentional functions of parietal and frontal cortex. *Cereb Cortex* 2005; 15: 1469–84.
- Perani D, Schnur T, Tettamanti C, Gorno-Tempini M, Cappa SF, Fazio F. Word and picture matching: a PET study of semantic category effects. *Neuropsychologia* 1999; 37: 293–306.
- Poldrack RA, Wagner AD, Prull MW, Desmond JE, Glover GH, Gabrieli JDE. Functional specialization for semantic and phonological processing in the left inferior prefrontal cortex. *Neuroimage* 1999; 10: 15–35.
- Postler J, De Bleser R, Cholewa J, Glauche V, Hamzei F, Weiller C. Neuroimaging the semantic system(s). *Aphasiology* 2003; 17: 799–814.
- Raven JC. *Coloured progressive matrices sets A, AB, B*. London: H. K. Lewis; 1962.
- Robertson IH, Ward T, Ridgeway V, Nimmo-Smith I. *The test of everyday attention*. Farnham: Thames Valley Test Company; 1994.
- Rogers TT, Lambon Ralph MA, Garrard P, Bozeat S, McClelland JL, Hodges JR, et al. The structure and deterioration of semantic memory: a neuropsychological and computational investigation. *Psychol Rev* 2004; 111: 205–35.
- Roskies AL, Fiez JA, Balota DA, Raichle ME, Petersen SE. Task-dependent modulation of regions in the left inferior frontal cortex during semantic processing. *J Cogn Neurosci* 2001; 13: 829–43.
- Saffran EM. The organization of semantic memory: in support of a distributed model. *Brain Lang* 2000; 71: 204–12.
- Saygin AP, Dick F, Wilson SM, Dronkers N, Bates E. Neural resources for processing language and environmental sounds. *Brain* 2003; 126: 928–45.
- Scott SK, Blank SC, Rosen S, Wise RJS. Identification of a pathway for intelligible speech in the left temporal lobe. *Brain* 2000; 123: 2400–06.
- Seidenberg M, Griffith R, Sabsevitz D, Moran M, Haltiner A, Bell B, et al. Recognition and identification of famous faces in patients with unilateral temporal lobe epilepsy. *Neuropsychologia* 2002; 40: 446–56.
- Semenza C, Denes G, Lucchese D, Bisiacchi P. Selective deficit of conceptual structures in aphasia: class vs. thematic relations. *Brain Lang* 1980; 10: 243–8.
- Snodgrass JG, Vanderwart M. A standardized set of 260 pictures: norms for name agreement, image agreement, familiarity and visual complexity. *J Exp Psychol [Hum Learn]* 1980; 6: 174–215.
- Snowden JS, Goulding PJ, Neary D. Semantic dementia: a form of circumscribed cerebral atrophy. *Behav Neurol* 1989; 2: 167–82.
- Spinnler H, Vignolo LA. Impaired recognition of meaningful sounds in aphasia. *Cortex* 1966; 2: 337–48.
- Springer JA, Binder JR, Hammeke TA, Swanson SJ, Frost JA, Bellgowan PSF, et al. Language dominance in neurologically normal and epilepsy subjects: a functional MRI study. *Brain* 1999; 122: 2033–45.
- Stuss DT, Levine B, Alexander MP, Hong J, Palumbo C, Hamer L, et al. Wisconsin card sorting test performance in patients with focal frontal and posterior brain damage: effects of lesion location and test structure on separable cognitive processes. *Neuropsychologia* 2000; 34: 388–402.
- Thivard L, Hombrouck J, du Montcel ST, Delmaire C, Cohen L, Samson S, et al. Productive and perceptive language reorganization in temporal lobe epilepsy. *Neuroimage* 2005; 24: 841–51.
- Thompson-Schill SL, D'Esposito M, Aguirre GK, Farah MJ. Role of left inferior prefrontal cortex in retrieval of semantic knowledge: a reevaluation. *Proc Natl Acad Sci USA* 1997; 94: 14792–7.
- Vandenberghe R, Price C, Wise R, Josephs O, Frackowiak RSJ. Functional anatomy of a common semantic system for words and pictures. *Nature* 1996; 383: 254–6.
- Varney NR. Sound recognition in relation to aural language comprehension in aphasic patients. *J Neurol Neurosurg Psychiatry* 1980; 43: 71–5.
- Wagner AD, Pare-Blagoev EJ, Clark J, Poldrack RA. Recovering meaning: left prefrontal cortex guides controlled semantic retrieval. *Neuron* 2001; 31: 329–38.
- Warrington EK. The selective impairment of semantic memory. *Q J Exp Psychol* 1975; 27: 635–57.
- Warrington EK, Cipolotti L. Word comprehension: the distinction between refractory and storage impairments. *Brain* 1996; 119: 611–25.
- Warrington EK, Crutch SJ. A circumscribed refractory access disorder: a verbal semantic impairment sparing visual semantics. *Cogn Neuropsychol* 2004; 21: 299–315.
- Warrington EK, James M. *The visual object and space perception battery*. Bury St. Edmunds, UK: Thames Valley Test Company; 1991.
- Warrington EK, McCarthy RA. Category specific access dysphasia. *Brain* 1983; 106: 859–78.
- Warrington EK, McCarthy RA. Categories of knowledge: further fractionations and an attempted integration. *Brain* 1987; 110: 1273–96.
- Warrington EK, McKenna P, Orpwood L. Single word comprehension: a concrete and abstract word synonym test. *Neuropsychol Rehab* 1998; 8: 143–54.
- Warrington EK, Shallice T. Category specific semantic impairments. *Brain* 1984; 107: 829–54.
- Wechsler D. *Wechsler Memory Scale—Revised (WMS-R)*. New York: Psychological Corporation; 1987.
- Wernicke C. *Deraphasische Symptomencomplex*. Breslau: Cohn and Weigert; 1874.
- Whitehouse P, Caramazza A, Zurif E. Naming in aphasia: interacting effects of form and function. *Brain Lang* 1978; 6: 63–74.
- Wiener DA, Connor LT, Obler LK. Inhibition and auditory comprehension in Wernicke's aphasia. *Aphasiology* 2004; 18: 599–609.
- Wilson BA. Semantic memory impairments following non-progressive brain injury: a study of four cases. *Brain Injury* 1997; 11: 259–69.