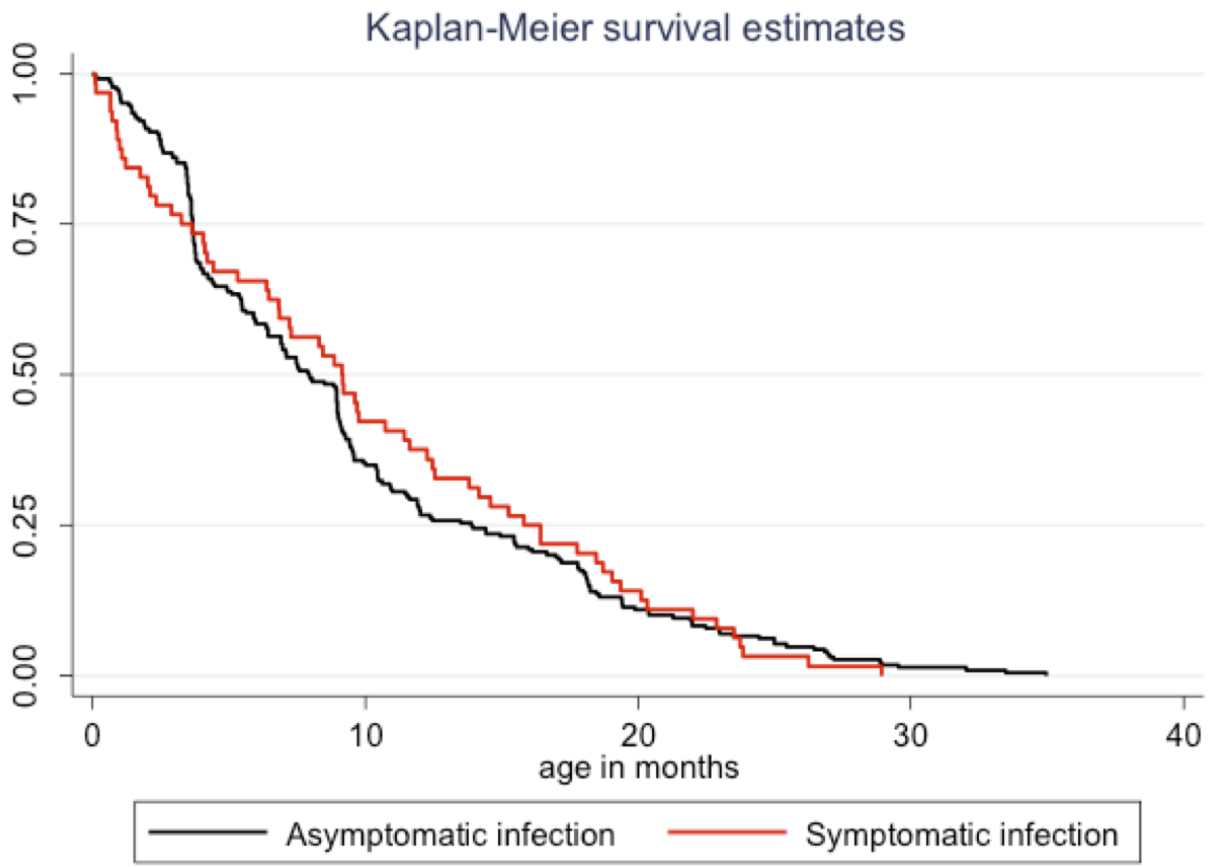
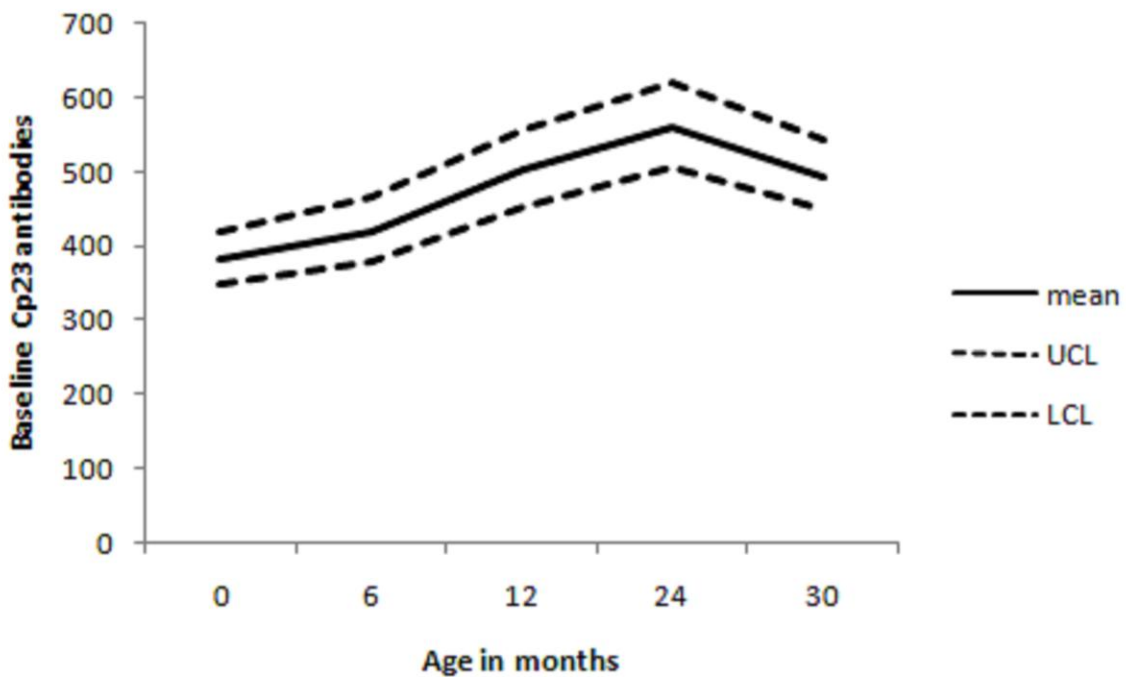
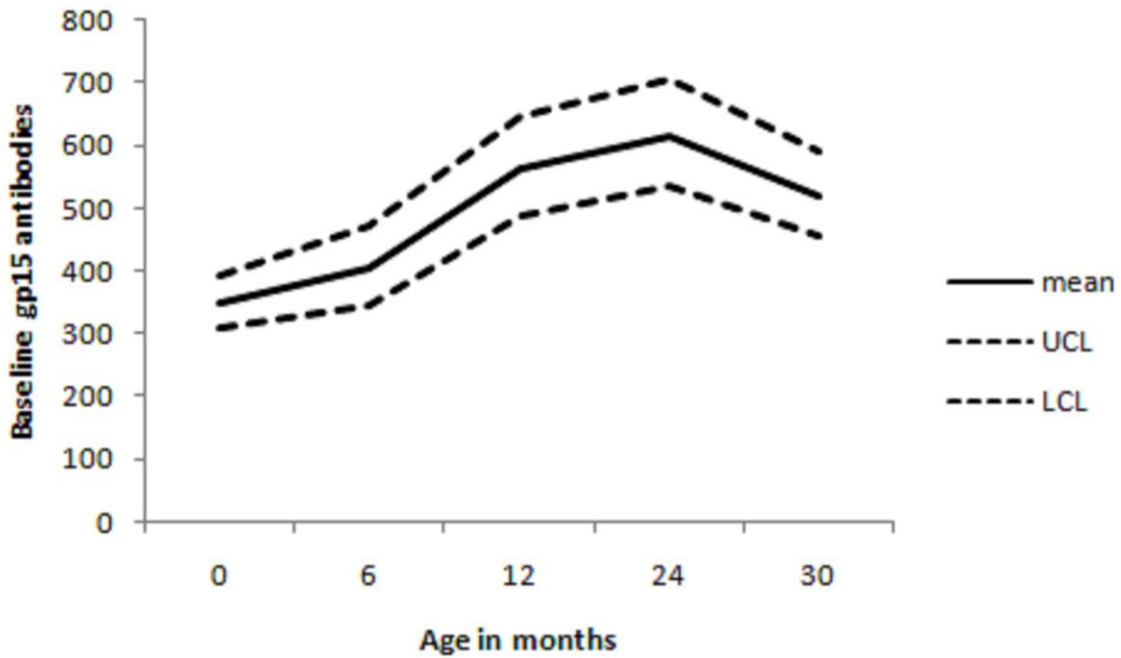


Supplementary Figure 1: Kaplan-Meier curve showing symptomatic and asymptomatic cryptosporidiosis in a birth cohort in Vellore, India who completed three years of follow-up



Supplementary Figure 2: IgG antibodies to cryptosporidial antigens gp15 and cp23 by age in a birth cohort of children who has sera tested every six months. The solid line is the geometric mean of antibodies, and the hashed lines are the upper (UCL) and lower (LCL) confidence limits.



Supplementary Figure 3: IgG antibodies to cryptosporidial antigens gp15 and cp23 by number of infections age in a birth cohort of children. The solid line is the geometric mean of antibodies, and the hashed lines are the upper (UCL) and lower (LCL) confidence limits.

