

For what endpoint does myocardial ¹²³I-MIBG scintigraphy have the greatest prognostic value in patients with chronic heart failure? Results of a pooled individual patient data meta-analysis

Derk O. Verschure^{1,2}, Caroline E. Veltman³, Alain Manrique⁴, G. Aernout Somsen⁵, Maria Koutelou⁶, Athanasios Katsikis⁶, Denis Agostini⁷, Myron C. Gerson⁸, Berthe L.F. van Eck-Smit¹, Arthur J.H.A. Scholte³, Arnold F. Jacobson⁹, and Hein J. Verberne^{1*}

¹Department of Nuclear Medicine, Room F2-238, Academic Medical Center, University of Amsterdam, PO Box 22660, 1100 DD Amsterdam, The Netherlands; ²Department of Cardiology, Medisch Centrum Alkmaar, Alkmaar, The Netherlands; ³Department of Cardiology, Leiden University Medical Center, Leiden, The Netherlands; ⁴Department of Nuclear Medicine, Service Commun Investigations chez l'Homme, GIP Cyceron, Caen, France; ⁵Cardiology Centres the Netherlands, Amsterdam, The Netherlands; ⁶Department of Nuclear Medicine, Onassis Cardiac Surgery Center, Athens, Greece; ⁷Department of Nuclear Medicine, CHU Côte de Nacre, Caen, France; ⁸Division of Cardiology, Department of Internal Medicine, University of Cincinnati College of Medicine, Cincinnati, OH, USA; and ⁹GE Healthcare, Princeton, NJ, USA

Received 18 December 2013; accepted after revision 22 February 2014; online publish-ahead-of-print 30 March 2014

Aims

The purpose of this study was to determine the most appropriate prognostic endpoint for myocardial ¹²³I-metaiodobenzylguanidine (MIBG) scintigraphy in patients with chronic heart failure (CHF) based on aggregate results from multiple studies published in the past decade.

Methods and results

Original individual late (3–5 h) heart/mediastinum (H/M) ratio data of 636 CHF patients were retrieved from six studies from Europe and the USA. All-cause mortality, cardiac mortality, arrhythmic events, and heart transplantation were investigated to determine which provided the strongest prognostic significance for the MIBG imaging data. The majority of patients was male (78%), had a decreased left ventricular ejection fraction ($31.1 \pm 12.5\%$), and a mean late H/M of 1.67 ± 0.47 . During follow-up (mean 36.9 ± 20.1 months), there were 83 deaths, 67 cardiac deaths, 33 arrhythmic events, and 56 heart transplants. In univariate regression analysis, late H/M was a significant predictor of all event categories, but lowest hazard ratios (HRs) were for the composite endpoint of any event (HR = 0.30, 95% CI 0.19–0.46), all-cause (HR = 0.29, 95% CI 0.16–0.53), and cardiac mortality (HR = 0.28, 95% CI 0.14–0.55). In multivariate analysis, late H/M was an independent predictor for all event categories, except for arrhythmias.

Conclusions

This pooled individual patient data meta-analysis showed that, in CHF patients, the late H/M ratio is not only useful as a dichotomous predictor of events (high vs. low risk), but also has prognostic implication over the full range of the outcome value for all event categories except arrhythmias.

Keywords

Cardiac sympathetic nerve function • Heart failure • Metaiodobenzylguanidine • Pooled analysis • Prognosis

Introduction

Despite the numerous single-centre studies demonstrating the prognostic value of myocardial ¹²³I-metaiodobenzylguanidine (MIBG) imaging in chronic heart failure (CHF) patients, clinical use of this

procedure remains limited.^{1–4} One potential reason for the limited clinical impact of many publications is that the different ways in which increased risk was characterized could not be directly related to patient management considerations. In addition, most of the studies analysed the results using a dichotomous division of

* Corresponding author. Tel: +31 20 5669111; Fax: +31 20 5669092, E-mail: h.j.verberne@amc.uva.nl

Published on behalf of the European Society of Cardiology. All rights reserved. © The Author 2014. For permissions please email: journals.permissions@oup.com

patients into low and high cardiac uptake groups, without adequate standardization of the thresholds chosen for division of the populations.⁵ Cardiac uptake of MIBG was only rarely analysed as a continuous quantitative variable, making it difficult to assess the full scope of the prognostic potential of MIBG.^{6,7} In addition, there was a lack of consistency in defining the population in whom MIBG should be used and the endpoints most likely to influence therapeutic decisions.

The purpose of this study was to examine the relative performance of cardiac MIBG imaging results as a prognostic marker for different endpoints in order to determine the endpoint for which this imaging had the greatest power. The basis for this new analysis was the aggregate results from individual patient data from multiple studies published in the past decade.

Methods

Study selection

Eligibility criteria

Published studies were eligible if survival was analysed in patients with heart failure stratified by the late heart to mediastinal (H/M) ratio as a parameter of MIBG myocardial uptake. The primary outcomes of interest were all-cause mortality, cardiac death, non-fatal arrhythmic events [i.e. sustained ventricular tachycardia, resuscitated cardiac arrest, and implantable cardioverter defibrillator (ICD) activations], cardiac transplantation, and a composite endpoint of any of the listed events.

Search strategy

A computer-assisted search was performed on the medical databases MEDLINE (January 2000 to January 2012), PubMed (January 2000 to January 2012), EMBASE (January 2000 to January 2012), the Cochrane Controlled Trial Register, and the Cochrane Database of Systematic Reviews (from their inception to January 2012). We used the following previously described highly sensitive search and adapted strategy:^{5,9} (((MIBG* [WORD] OR metaiodobenzylguanidine [WORD]) AND (heart [WORD] AND failure [WORD])) AND (incidence [MESH] OR mortality [MESH] OR follow-up studies [MESH] OR mortality [SH] OR prognos* [WORD] OR predict* [WORD] OR course [WORD])). The publications were restricted to those originating from Europe or the USA without any language restrictions. In addition, data from the ADMIRE-HF trial were not accessible for the current analysis.⁶

Selection procedure

All publications matching the eligibility criteria were retrieved. In the case of overlapping and duplicated datasets, care was taken to include only the most recent or most complete dataset. The primary responsible authors of the selected articles were contacted to determine whether the data used in the original publications still existed, and whether they were willing and able to share individual subject results for the combined pooled meta-analysis.

Definition of endpoints

All-cause mortality data were extracted from the long-term survival information collected as part of the original published research. The time to death was defined as the number of days from the date of MIBG administration until the date of death. For reasons of consistency, the follow-up was truncated at 60 months. Cardiac death was a component of the endpoint of all-cause mortality. Based on information collected during the course of the original studies, all reported deaths were categorized as either cardiac, non-cardiac, or unknown. Cardiac mortality included

sudden cardiac death, deaths as a result of progressive heart failure or acute myocardial infarction, and other deaths for which complications involving the heart were a central factor. All other deaths were categorized as non-cardiac if a primary cause such as malignancy or infection was known or unknown if there was no information concerning the circumstances of the death.

Arrhythmic events included any of the following documented occurrences: resuscitated cardiac arrest, appropriate ICD discharge (anti-tachycardia pacing or defibrillation), sustained ventricular tachycardia of >30 s duration and a heart rate >100 bpm. The rhythm must also have been poorly tolerated (associated with hypotension and collapse) and/or have required an intervention (intravenous medications, anti-tachycardia pacing, and direct current shock) to terminate. Cardiac transplantation performed for any indication was recorded.

Statistical analysis

Cox's proportional hazard regression analysis was used to investigate the relationship between several possible patient-related explanatory variables [age, gender, late H/M, left ventricular ejection fraction (LVEF), aetiology of CHF, and baseline New York Heart Association (NYHA) functional class] and the different endpoints: all-cause mortality, cardiac death, arrhythmic events, cardiac transplantation, and the composite endpoint. In the case of multiple events, only the first event was used for analysis. Each individual parameter was entered in the Cox's proportional hazard regression analysis, based on forward likelihood ratio, if $P < 0.05$ and removed from the analysis, if $P > 0.10$. The χ^2 test, Cox's proportional hazard regression coefficient (coefficient B), and exponent (exponent B) were used to describe the model and relative contribution of the parameters to the model. Exponent B can, therefore, be considered to be the predicted change in hazard for a unit change in the predictor, i.e. hazard ratio (HR). A P -value of < 0.05 was considered statistically significant. All statistical analyses were performed with the SPSS software (SPSS for Windows, version 20.0; SPSS, Inc., Chicago, IL, USA).

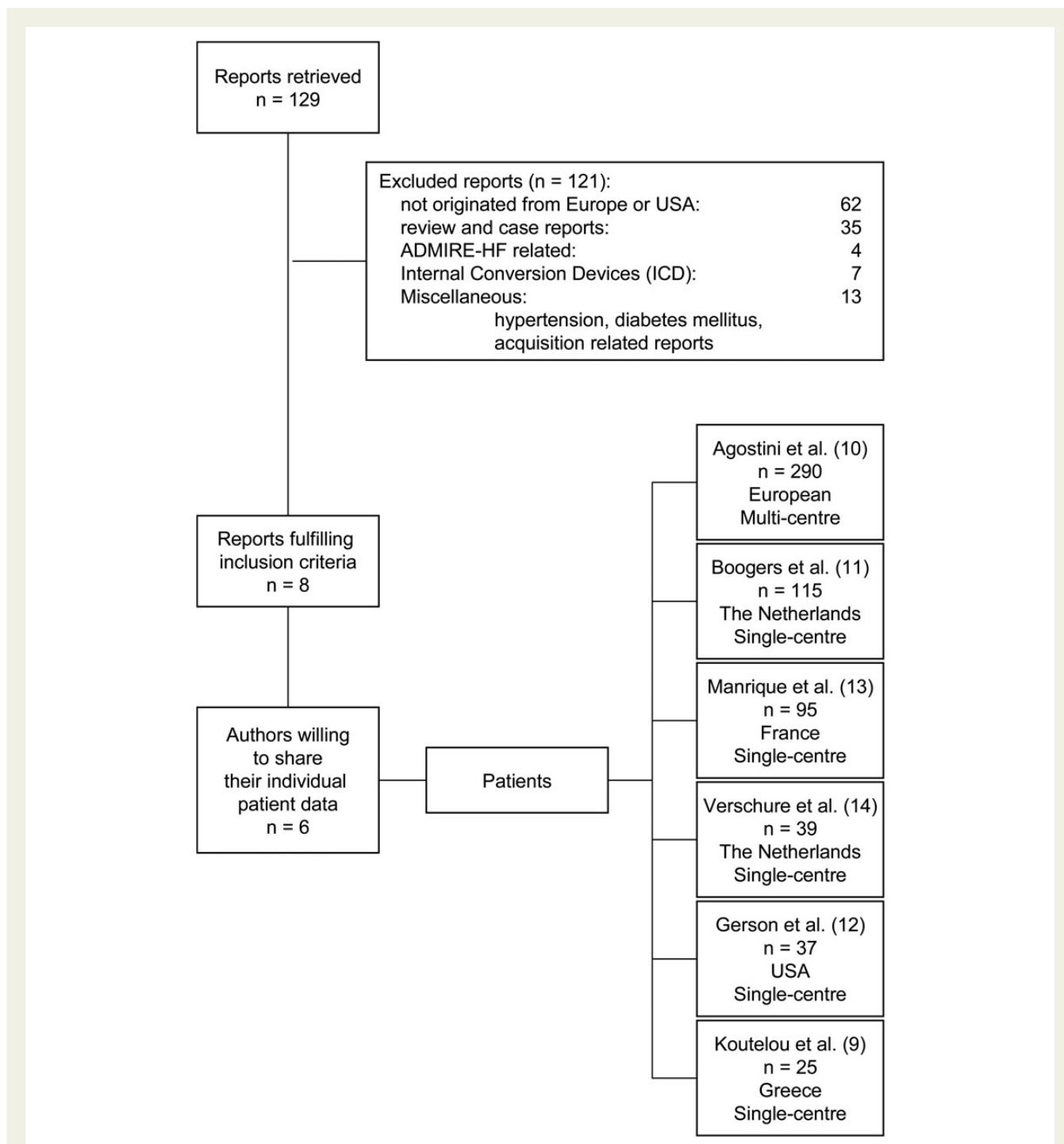
Results

Study selection

Full reports or abstracts from 129 references of papers yielded eight studies that fulfilled the inclusion criteria of our pooled individual patient data meta-analysis. The primary responsible authors of these eight studies were contacted and six agreed to share their individual patient data, all but one of the datasets were generated in Europe.^{9–14} The individual data of 601 subjects could be retrieved from local databases and aggregated into one database. Compared with the total number of subjects mentioned in the original publications, 35 additional subjects could be added to the aggregated database. As part of an ongoing registry of CHF patients undergoing MIBG, these subjects all came from one centre and were added to the local database after the original publication.¹¹ These 35 additional subjects were not included in any other previous publication. In addition, further follow-up data collected after the original publication were submitted for subjects in one previous aggregated study.¹⁰ Therefore, 636 subjects were eligible for the aggregated analysis. *Figure 1* shows the progress through the selection of studies eligible for the pooled individual patient data meta-analysis.

Datasets

The types of data available for all patients were: demographics, medical history, medication usage, CHF aetiology, LVEF, late H/M,



Downloaded from <https://academic.oup.com/ehjcmimaging/article/15/9/996/2403293> by guest on 24 April 2024

Figure 1: Selection of studies eligible for pooled individual patient data meta-analysis. One hundred and twenty-one reports were excluded: 62 reports not originating from Europe or the USA, 35 review and case reports, 4 reports related to ADMIRE-HF, 7 studies on ICD, and a group of 13 studies with miscellaneous subjects ranging from hypertension, diabetes mellitus to acquisition-related reports. No studies with overlapping and/or duplicated datasets were found. Non-electronic search (contact with authors and hand searching) did not result in additional (unpublished) studies that fulfilled the eligibility criteria.

and follow-up data. The majority of datasets was lacking complete information on other parameters (e.g. biochemistry and renal function data), thus requiring exclusion of these variables from the multivariate analyses.

All eligible studies reported that, to block uptake of free ¹²³I by the thyroid gland, patients were pre-treated with either a form of saturated solution of potassium iodide or perchlorate prior to the injection of MIBG. In all eligible studies, patients were intravenously

injected with ~185 MBq (5 mCi) of MIBG. Anterior planar images of the chest were acquired in almost all eligible studies at ~3–4 h ('late') post-injection of MIBG. In all studies, the myocardial region of interest (ROI) was drawn manually. A square or rectangular mediastinal ROI was drawn in the upper mediastinum where the size of the mediastinal ROI changed with matrix size. All eligible studies reported that the H/M ratio was calculated as the ratio of the counts/pixel in the two ROIs.

Baseline subject characteristics

The majority of the 636 subjects (599 from Europe and 37 from the USA) was male, had non-ischaemic CHF and a decreased LVEF, and was on beta-blockers, aldosterone antagonists, and either angiotensin-converting enzyme inhibitors or angiotensin II receptor blockers (Table 1).

Follow-up and events

During follow-up, truncated at 60 months (mean 36.9 ± 20.1 months with a range of 1–60 months), 159 patients had 172 events: 83 deaths of which 67 were cardiac deaths, 33 arrhythmic events, and 56 cardiac transplantations. The majority of subjects experienced one event and only 13 subjects had a second event. All these 13 subjects eventually died: six subjects had a cardiac transplantation prior to death and the remaining seven subjects had arrhythmias prior to death.

¹²³I-MIBG parameters

In all the subjects, the late H/M ratio was available. The mean late H/M was 1.67 ± 0.47 (first quintile ≤1.32; second to fourth quintile 1.33–1.97, and fifth quintile ≥1.98). Figure 2 shows the Kaplan–Meier curves for the late H/M (in quintiles) in relation to the events. For all defined endpoints, decreasing late H/M was associated with

increased event risk. This association was strongest for mortality (both all cause and cardiac) and weakest for arrhythmic events.

Univariate Cox's regression analysis

Table 2 presents the result of the univariate Cox regression analyses. The late H/M was a significant predictor for all event categories, but the highest χ^2 and the lowest HR were for the composite endpoint of any event (HR = 0.30, 95% CI: 0.19–0.46). The late H/M had similar power as a predictor of all-cause mortality, cardiac mortality, or cardiac transplantation (Table 2). For the prediction of arrhythmic events, the late H/M had the lowest χ^2 and least powerful HR.

Multivariate Cox's regression analysis

For all event categories, except for arrhythmias, late H/M was an independent predictor (Tables 3–7): i.e. a lower late H/M was associated with a higher risk of events.

For the composite endpoint of any event, late H/M was an independent predictor. Gender (i.e. females associated with a lower risk), LVEF (i.e. lower LVEF associated with a higher risk), and NYHA functional class (i.e. higher NYHA associated with a higher risk) were also identified as independent predictors (Table 3).

The independent predictors of all-cause mortality and cardiac mortality were late H/M and LVEF (i.e. lower LVEF was associated with a higher risk), whereas for all-cause mortality age (i.e. higher age was associated with higher risk) was also identified as an independent predictor (Tables 4 and 5).

For cardiac transplantation, the independent predictors were late H/M, age (i.e. higher age was associated with a lower risk), LVEF (i.e. lower LVEF was associated with a higher risk), and baseline NYHA functional class (i.e. higher NYHA class was associated with a higher risk) (Table 6).

Arrhythmias could independently be predicted by age (i.e. higher age was associated with a higher risk) and baseline NYHA functional class (i.e. higher NYHA class was associated with a lower risk) (Table 7).

Aetiology of heart failure (i.e. ischaemic vs. non-ischaemic) was not an independent predictor in the multivariate analyses for any of the outcome events.

Discussion

This study demonstrates the independent prognostic value of increased cardiac sympathetic activity as assessed by the late H/M ratio as a measure of MIBG myocardial uptake when used as a continuous parameter by aggregating individual data of patients with HF from multiple single-centre cohort studies. While the late H/M ratio can be effectively used as a dichotomous or categorical predictor of events (high vs. low risk), the present results confirm that the risk of events is continuously associated with the late H/M, with prognostic implication over the full range of this parameter.

In heart failure, abnormal activity of the sympathetic nervous system has been shown to be of pathophysiological importance.¹⁵ Increased neuronal release of norepinephrine (NE) in response to a deterioration of cardiac function is accompanied by decreased presynaptic NE reuptake due to down-regulation of the cardiac NE transporter.¹⁶ If prolonged, this leads to a reactive desensitization

Table 1 Patient characteristics (N = 636)

Age (years)	56 ± 12	range: 21–87
Female/male	137/499	22 vs. 78%
BMI (kg/m ²)	27.1 ± 4.8	range: 16–45.8
LVEF (%)	31.1 ± 12.5	range: 7–47
NYHA class		
I	33	5.2%
II	300	47.2%
III	278	43.7%
IV	25	3.9%
Medical history		
Ischaemic vs. non-ischaemic	264/372	42 vs. 58%
Hypertension	143	
Diabetes Mellitus	84	
Medication		
ACE-I/ARB	519	
Beta-blockers	420	
Amiodarone	102	
Aldosterone antagonist	128	

BMI: body mass index; NYHA: New York Heart Association functional classification; ACE-I: angiotensin-converting enzyme inhibitor I; ARB: angiotensin II receptor blocker.

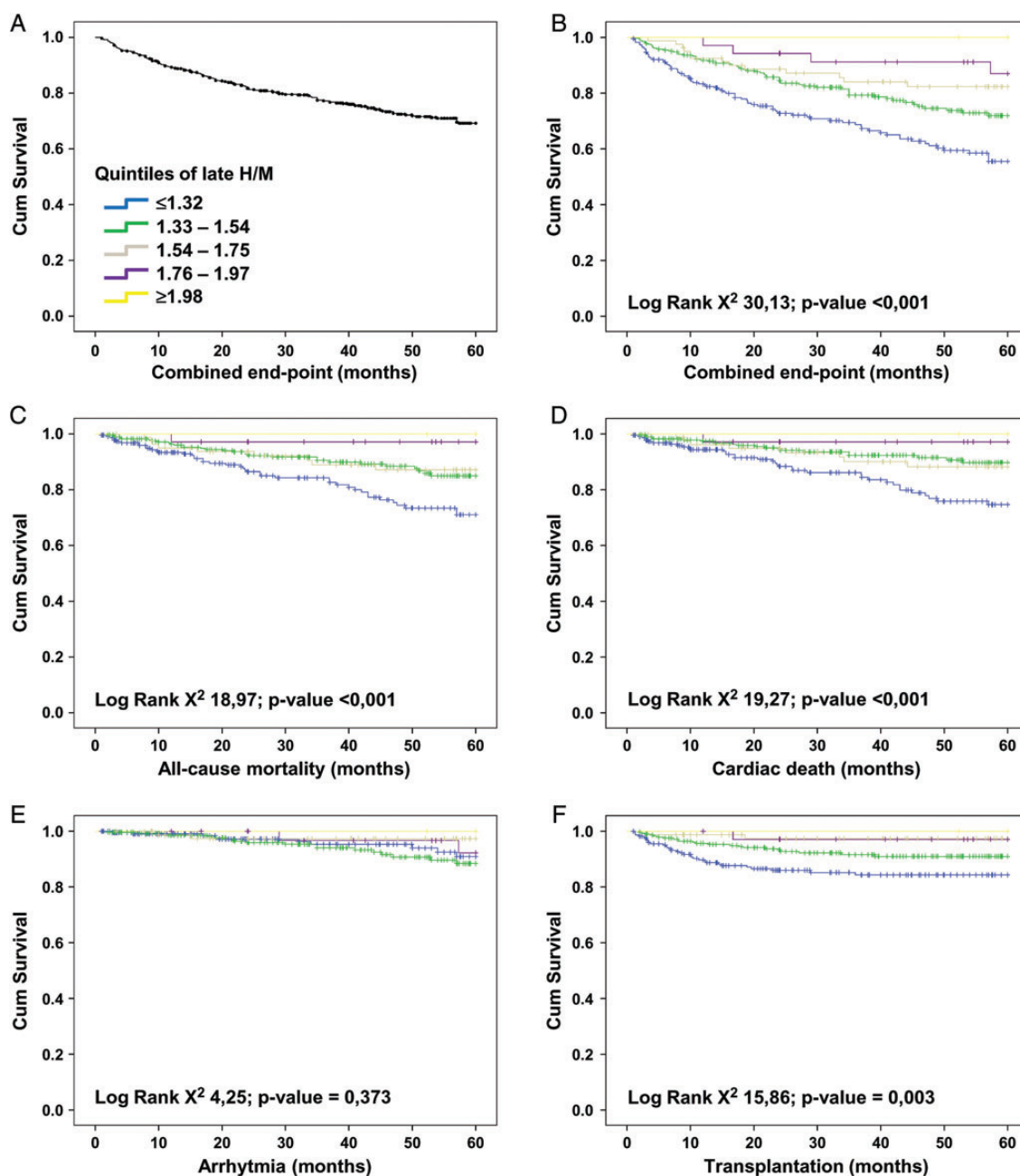


Figure 2: Kaplan–Meier (K–M) survival curves classified by quintiles of late H/M. The K–M survival curve for the combined endpoint without any relation to the late H/M shows an overall cumulative increase of events over time (A). When the K–M survival curves for the combined event are plotted in relation to the late H/M (expressed in quintiles), there is a clear association showing that with lower late H/M the risk of events increase (B). This holds also true for all-cause mortality (C) and cardiac mortality (D) and to lesser extent for arrhythmias (E) and cardiac transplantation (F).

of the myocardial beta-adrenergic receptors in the synaptic cleft, further exacerbating ventricular dysfunction.^{17,18}

MIBG is a radiolabelled NE analogue that allows for the visualization and quantification of myocardial sympathetic innervation. MIBG shares the same uptake, storage, and release mechanisms as NE, but is not metabolized. The quantified myocardial MIBG parameters have proved to be of prognostic value in CHF. The meta-analyses of Verberne *et al.*⁵ and Kuwabara *et al.*¹⁹ showed

that HF patients with abnormal myocardial MIBG parameters have a significantly worse prognosis compared with those with relatively preserved myocardial MIBG parameters (i.e. late H/M and MIBG myocardial washout). The ADMIRE-HF trial demonstrated for the first time in a large prospective study that the late H/M ratio, especially in concert with LVEF and B-type natriuretic peptide (BNP), was a strong independent predictor of prognosis in HF patients.⁶ The recent publication by Nakata *et al.*⁷ confirmed, by pooled analyses

Table 2 Univariate analysis for late H/M as a predictor of events at 60-month follow-up

Events	χ^2	HR (95% CI)	P-value
Any event	36.86	0.30 (0.19–0.46)	<0.0001
All-cause mortality	20.14	0.29 (0.16–0.53)	<0.0001
Cardiac transplant	17.22	0.22 (0.10–0.49)	<0.0001
Cardiac mortality	17.13	0.28 (0.14–0.55)	<0.0001
Arrhythmia	10.00	0.33 (0.16–0.67)	0.002

Outcome of univariate analyses is ordered based on χ^2 scoring. Any event: combined endpoint; χ^2 : chi-square; HR: hazard ratio; 95% CI: 95% confidence interval.

Table 3 Multivariate analysis for predictors of the combined endpoint of any event at 60-month follow-up

	χ^2 of the model	HR (95% CI)	P-value
Any event	67.98		<0.0001
Late H/M		0.43 (0.27–0.67)	<0.0001
Gender		0.55 (0.36–0.85)	0.006
LVEF		0.97 (0.95–0.99)	<0.0001
NYHA		1.34 (1.04–1.72)	0.023

Outcome of multivariate analysis is ordered based on HR scores. Parameters used as possible explanatory variables: age, gender, late H/M, LVEF, aetiology of CHF, and NYHA class. χ^2 : chi-square; HR: hazard ratio; 95% CI: 95% confidence interval; LVEF: left ventricular ejection fraction; NYHA: New York Heart Association functional classification.

Table 4 Multivariate analysis for predictors of all-cause mortality at 60-month follow-up

	χ^2 of the model	HR (95% CI)	P-value
All-cause mortality	33.95		<0.0001
Late H/M		0.50 (0.26–0.96)	0.038
LVEF		0.97 (0.95–0.99)	0.005
Age		1.02 (1.00–1.04)	0.025

Outcome of multivariate analysis is ordered based on HR scores. Parameters used as possible explanatory variables: age, gender, late H/M, LVEF, aetiology of CHF, and NYHA class. χ^2 : chi-square; HR: hazard ratio; 95% CI: 95% confidence interval; LVEF: left ventricular ejection fraction.

Table 5 Multivariate analysis for predictors of cardiac mortality at 60-month follow-up

	χ^2 of the model	HR (95% CI)	P-value
Cardiac mortality	24.94		<0.0001
Late H/M		0.40 (0.20–0.82)	0.012
LVEF		0.97 (0.94–0.99)	0.007

Outcome of multivariate analysis is ordered based on HR scores. Parameters used as possible explanatory variables: age, gender, late H/M, LVEF, aetiology of CHF, and NYHA class. χ^2 : chi-square; HR: hazard ratio; 95% CI: 95% confidence interval; LVEF: left ventricular ejection fraction.

Table 6 Multivariate analysis for predictors of cardiac transplantations at 60-month follow-up

	χ^2 of the model	HR (95% CI)	P-value
Cardiac transplantation	72.56		<0.0001
Late H/M		0.34 (0.14–0.79)	0.012
Age		0.95 (0.93–0.97)	<0.0001
LVEF		0.95 (0.92–0.98)	0.005
NYHA		2.66 (1.73–4.08)	<0.0001

Outcome of multivariate analysis is ordered based on HR scores. Parameters used as possible explanatory variables: age, gender, late H/M, LVEF, aetiology of CHF, and NYHA class. χ^2 : chi-square; HR: hazard ratio; 95% CI: 95% confidence interval; LVEF: left ventricular ejection fraction; NYHA: New York Heart Association functional classification.

Table 7 Multivariate analysis for predictors of arrhythmias at 60-month follow-up

	χ^2 of the model	HR (95% CI)	P-value
Arrhythmias	10.10		0.006
NYHA		0.57 (0.33–0.98)	0.04
Age		1.04 (1.01–1.07)	0.01

Outcome of multivariate analysis is ordered based on HR scores. Parameters used as possible explanatory variables: age, gender, late H/M, LVEF, aetiology of CHF, and NYHA class. χ^2 : chi-square; HR: hazard ratio; 95% CI: 95% confidence interval; NYHA: New York Heart Association functional classification.

of independent cohort studies from Japan, the long-term prognostic value of cardiac MIBG uptake in patients with CHF independently of other markers, such as NYHA functional class, BNP, and LVEF. However, only in the most recent studies have MIBG parameters been analysed consistently as continuous variables. In the majority

of earlier studies, cardiac uptake of MIBG was either dichotomized to differentiate high-risk from low-risk populations (ADMIRE-HF) or subdivided into more pre-specified risk groups (i.e. low, intermediate, and high risks). These categorizations made it difficult to assess the full scope of the prognostic potential of MIBG. The results of

this study using the late H/M as a continuous parameter give further support to the prognostic role of cardiac MIBG in patients with CHF.

The two available meta-analyses on the prognostic role of MIBG in CHF were based on published aggregate imaging and outcome results.^{5,19} However, this study, like the recent study by Nakata *et al.*, involved collection of the individual data records for individual patients with CHF. This enabled detailed analyses of the full combined population and the merged data from the participating sites provided consistent evidence of efficacy for cardiac MIBG imaging equivalent to that typically obtained from a multicentre prospective trial.

The less robust performance of the planar late H/M for prediction of arrhythmic events than for cardiac or all-cause death has been observed in other studies.⁶ There are several possible explanations for this finding. The relationship between occurrence of arrhythmic events and late H/M as a measure of global cardiac innervation status is non-linear (highest incidence in patients with modest reduction in uptake)²⁰ and as a result reduces the effectiveness of the Cox proportional hazard regression analysis. This non-linear relationship was also observed in the present dataset, with the highest incidence of arrhythmic events in patients with a late H/M of 1.40–1.59 (15/147; 10.2%). The use of planar rather than SPECT quantitation of innervation status also likely contributes to the poorer performance of the imaging results, given previous demonstrations of the relationship between regional MIBG defect extent and susceptibility to occurrence of arrhythmic events.^{11,21} The use of tomographic techniques to better predict arrhythmic events is further corroborated by the publication of Fallavollita *et al.*,²² focusing on regional abnormalities using PET. So, while cardiac MIBG imaging has potential for improving assessment of arrhythmic risk in CHF patients, realizing this potential will require greater use of SPECT with appropriate methods for relative or preferably absolute uptake quantification.

As aetiology of heart failure (i.e. ischaemic vs. non-ischaemic) was not an independent predictor in the multivariate analyses for any of the outcome events, this already suggested that in time the events and possible explanatory variables were relatively more or less equally divided over both groups. In addition, the number of patients and their outcome events in the two subgroups (i.e. ischaemic and non-ischaemic) was not sufficient to support meaningful multivariate analyses for the individual event categories.

One factor that has constrained acceptance of cardiac MIBG imaging as a clinical patient management tool in heart failure has been the variability of technical aspects of the procedure. Although most publications have included the late H/M as the measure of myocardial uptake, the methods used to obtain this parameter have varied. For example, variation in collimator selection and the impact of administered activity, acquisition time, and duration have been shown to influence the final results.^{23,24} With the publication of the proposal for standardization of MIBG cardiac sympathetic imaging by the European Association of Nuclear Medicine (EANM), these variations will hopefully be limited in the future.²⁵ However, as the majority of studies included in the present analysis was performed before the publication of this standardization proposal, the impact of variation in outcome related to the aforementioned parameters cannot be assessed.

The lack of consensus on how to extrapolate the available MIBG data into clinical practice is reflected in the absence of MIBG in the majority of the current guidelines regarding heart failure except in

Japan.²⁶ The Japanese Circulation Society guidelines for nuclear cardiology list the use of MIBG for the evaluation of severity and prognosis of heart failure as Class I recommendation (general agreement of effectiveness and usefulness) based on level B evidence (verified by two or more multicentre randomized intervention trials on fewer than 400 patients, well-designed comparative studies, or large-scale cohort studies). As the amount of high-quality data continues to accumulate, it is likely that MIBG imaging will eventually be incorporated into both Europe and the USA HF guidelines. However, the prerequisite for this is that future studies need to be of high quality and with sufficient numbers of patients to allow for adequate and statistically reliable analyses.

Limitations

The two most limiting factors of this study are that data from Japan were excluded, and that ADMIRE-HF data were not available. The exclusion of data from Japan was primarily related to the difference in the numerical range of the published H/M results, compared with data from Europe or the USA. Published late H/M values in control subjects from Japan are higher compared with similar data from Europe and the USA (2.42 ± 0.30 vs. 1.93 ± 0.16).^{27–29} These differences cannot be explained by differences in baseline characteristics of the control subjects, but are probably related to variations in technique, especially variation in types of collimators. While the exclusion of Japanese data may have limited the statistical power of this study, the results of this study are nevertheless similar to those of Nakata *et al.*⁷ With regard to ADMIRE-HF, even if these data had been available, their addition would likely have skewed the aggregate results towards shorter follow-up, given the median 17 months in that study compared with 37 months in the present analyses.⁶

In contrast to the ADMIRE-HF study and the Nakata publication, this study had no access to BNP and/or N-terminal prohormone BNP (NT-proBNP) data. We can therefore not exclude the possible prognostic role BNP or NT-proBNP might have played in our analyses. However, in both the recent Nakata publication and in the ADMIRE publication, late H/M remained significant in analyses including BNP.

Conclusion

This meta-analysis, using the individual data of 636 CHF patients predominantly from Europe, showed the intermediate to long-term (i.e. 5 years) prognostic value of cardiac sympathetic activity as assessed with cardiac MIBG-derived late H/M. The continuous numeric late H/M has prognostic implication over the full numeric range of the parameter, with greatest strength as a predictor of mortality. In the present retrospective analyses, the weakest performance of the planar H/M was for prediction of arrhythmias. In the future, use of the late H/M by cardiologists for individual patient-risk assessment or choice of therapeutic interventions will depend on improvements in the technical consistency of clinical MIBG examinations, and prospective generation of data documenting a positive effect of this procedure in clinically relevant situations.

Conflict of interest: A.F.J. is employed by GE Healthcare.

References

- Cohen-Solal A, Esanu Y, Logeart D, Pessione F, Dubois C, Dreyfus G et al. Cardiac metaiodobenzylguanidine uptake in patients with moderate chronic heart failure: relationship with peak oxygen uptake and prognosis. *J Am Coll Cardiol* 1999;**33**:759–66.
- Merlet P, Benvenuti C, Moyse D, Pouillart F, Dubois-Rande JL, Duval AM et al. Prognostic value of MIBG imaging in idiopathic dilated cardiomyopathy. *J Nucl Med* 1999;**40**:917–23.
- Merlet P, Pouillart F, Dubois-Rande JL, Delahaye N, Fumey R, Castaigne A et al. Sympathetic nerve alterations assessed with ¹²³I-MIBG in the failing human heart. *J Nucl Med* 1999;**40**:224–31.
- Nakata T, Wakabayashi T, Kyuma M, Takahashi T, Hashimoto A, Ogata H et al. Prognostic implications of an initial loss of cardiac metaiodobenzylguanidine uptake and diabetes mellitus in patients with left ventricular dysfunction. *J Card Fail* 2003;**9**:113–21.
- Verberne HJ, Brewster LM, Somsen GA, van Eck-Smit BL. Prognostic value of myocardial ¹²³I-metaiodobenzylguanidine (MIBG) parameters in patients with heart failure: a systematic review. *Eur Heart J* 2008;**29**:1147–59.
- Jacobson AF, Senior R, Cerqueira MD, Wong ND, Thomas GS, Lopez VA et al. Myocardial iodine-123 meta-iodobenzylguanidine imaging and cardiac events in heart failure results of the prospective ADMIRE-HF (AdreView Myocardial Imaging for Risk Evaluation in Heart Failure) study. *J Am Coll Cardiol* 2010;**55**:2212–21.
- Nakata T, Nakajima K, Yamashina S, Yamada T, Momose M, Kasama S et al. A pooled analysis of multicenter cohort studies of ¹²³I-MIBG-imaging of sympathetic innervation for assessment of long-term prognosis in heart failure. *JACC Cardiovasc Imaging* 2013;**6**:772–84.
- Haynes RB, Walker CJ, McKibbin KA, Johnston ME, Willan AR. Performances of 27 MEDLINE systems tested by searches with clinical questions. *J Am Med Assoc* 1994;**271**:285–95.
- Koutelou M, Katsikis A, Flevari P, Theodorakis G, Livanis E, Georgiadis M et al. Predictive value of cardiac autonomic indexes and MIBG washout in ICD recipients with mild to moderate heart failure. *Ann Nucl Med* 2009;**23**:677–84.
- Agostini D, Verberne HJ, Burchert W, Knuuti J, Povinac P, Sambucetti G et al. I-123-MIBG myocardial imaging for assessment of risk for a major cardiac event in heart failure patients: insights from a retrospective European multicenter study. *Eur J Nucl Med Mol Imaging* 2008;**35**:535–46.
- Boogers MJ, Borleffs CJ, Henneman MM, van Bommel RJ, van Rj, Boersma E et al. Cardiac sympathetic denervation assessed with ¹²³I-iodine metaiodobenzylguanidine imaging predicts ventricular arrhythmias in implantable cardioverter-defibrillator patients. *J Am Coll Cardiol* 2010;**55**:2769–77.
- Gerson MC, McGuire N, Wagoner LE. Sympathetic nervous system function as measured by I-123 metaiodobenzylguanidine predicts transplant-free survival in heart failure patients with idiopathic dilated cardiomyopathy. *J Card Fail* 2003;**9**:384–91.
- Manrique A, Bernard M, Hitzel A, Bauer F, Menard JF, Sabatier R et al. Prognostic value of sympathetic innervation and cardiac asynchrony in dilated cardiomyopathy. *Eur J Nucl Med Mol Imaging* 2008;**35**:2074–81.
- Verschure DO, Somsen GA, van Eck-Smit BL, Verberne HJ. Renal function in relation to cardiac (123I)-MIBG scintigraphy in patients with chronic heart failure. *Int J Mol Imaging* 2012;**2012**:434790.
- Cohn JN, Levine TB, Olivari MT, Garberg V, Lura D, Francis GS et al. Plasma norepinephrine as a guide to prognosis in patients with chronic congestive heart failure. *N Engl J Med* 1984;**311**:819–23.
- Kawai H, Mohan A, Hagen J, Dong E, Armstrong J, Stevens SY et al. Alterations in cardiac adrenergic terminal function and beta-adrenoceptor density in pacing-induced heart failure. *Am J Physiol Heart Circ Physiol* 2000;**278**:H1708–16.
- Bristow MR. The adrenergic nervous system in heart failure. *N Engl J Med* 1984;**311**:850–1.
- Esler M, Kaye D, Lambert G, Esler D, Jennings G. Adrenergic nervous system in heart failure. *Am J Cardiol* 1997;**80**:7L–14L.
- Kuwabara Y, Tamaki N, Nakata T, Yamashina S, Yamazaki J. Determination of the survival rate in patients with congestive heart failure stratified by (1)(2)(3)-MIBG imaging: a meta-analysis from the studies performed in Japan. *Ann Nucl Med* 2011;**25**:101–7.
- Kelesidis I, Travlin MI. Use of cardiac radionuclide imaging to identify patients at risk for arrhythmic sudden cardiac death. *J Nucl Cardiol* 2012;**19**:142–52.
- Bax JJ, Kraft O, Buxton AE, Fjeld JG, Parizek P, Agostini D et al. 123 I-MIBG scintigraphy to predict inducibility of ventricular arrhythmias on cardiac electrophysiology testing: a prospective multicenter pilot study. *Circ Cardiovasc Imaging* 2008;**1**:131–40.
- Fallavollita JA, Heavey BM, Luisi AJ Jr, Michalek SM, Baldwa S, Mashtare TL Jr et al. Regional myocardial sympathetic denervation predicts the risk of sudden cardiac arrest in ischemic cardiomyopathy. *J Am Coll Cardiol* 2014;**63**:141–9.
- Verberne HJ, Somsen GA, Povinac P, van Eck-Smit BL, Jacobson AF. Impact of mediastinal, liver and lung (123I)-metaiodobenzylguanidine ((123I)-MIBG) washout on calculated (123I)-MIBG myocardial washout. *Eur J Nucl Med Mol Imaging* 2009;**36**:1322–8.
- Verberne HJ, Habraken JB, van Eck-Smit BL, Agostini D, Jacobson AF. Variations in ¹²³I-metaiodobenzylguanidine (MIBG) late heart mediastinal ratios in chronic heart failure: a need for standardisation and validation. *Eur J Nucl Med Mol Imaging* 2008;**35**:547–53.
- Flotats A, Carrio I, Agostini D, Le GD, Marcassa C, Schaffers M et al. Proposal for standardization of ¹²³I-metaiodobenzylguanidine (MIBG) cardiac sympathetic imaging by the EANM Cardiovascular Committee and the European Council of Nuclear Cardiology. *Eur J Nucl Med Mol Imaging* 2010;**37**:1802–12.
- JCS Joint Working Group. Guidelines for clinical use of cardiac nuclear medicine (JCS 2010); digest version. *Circ J* 2012;**76**:761–7.
- Nakajima K, Taki J, Tonami N, Hisada K. Decreased ¹²³I-MIBG uptake and increased clearance in various cardiac diseases. *Nucl Med Commun* 1994;**15**:317–23.
- Somsen GA, Verberne HJ, Fleury E, Righetti A. Normal values and within-subject variability of cardiac I-123 MIBG scintigraphy in healthy individuals: implications for clinical studies. *J Nucl Cardiol* 2004;**11**:126–33.
- Hattori N, Schwaiger M. Metaiodobenzylguanidine scintigraphy of the heart: what have we learnt clinically? *Eur J Nucl Med* 2000;**27**:1–6.